

# TEST REPORT

OF

FCC Part 15 Subpart C §15.209

FCC ID : SY5IPM

Equipment Under Test : Smart Key ECU  
Model Name : IPM  
Serial No. : N/A  
Applicant : Siemens Automotive Systems Corporation  
Manufacturer : Siemens Automotive Systems Corporation  
Date of Test(s) : 2007-07-26 ~ 2007-08-06  
Date of Issue : 2007-08-13

In the configuration tested, the EUT complied with the standards specified above.

Tested By:



Date

2007-08-13

Geoffrey Do

Approved By



Date

2007-08-13

Denny Ham

*The results shown in this test report refer only to the sample(s) tested unless otherwise stated. This test report cannot be reproduced, except in full, without prior written permission of the Company.*

# INDEX

<u>TABLE OF CONTENTS</u>	Page
1. General Information -----	3
2. Field Strength of Fundamental -----	6
3. Spurious Emission-----	13
Appendix A. Photo of Field Strength fundamental & Spurious Emission Test	
Appendix B. Photos of the EUT	

---

*The results shown in this test report refer only to the sample(s) tested unless otherwise stated. This test report cannot be reproduced, except in full, without prior written permission of the Company.*

## 1. General Information

### 1.1. Testing Laboratory

SGS Testing Korea Co., Ltd.  
 Wireless Div. 2FL, 18-34, Sanbon-dong, Gunpo-si, Gyeonggi-do, Korea 435-040  
[www.electrolab.kr.sgs.com](http://www.electrolab.kr.sgs.com)  
 Telephone : +82 +31 428 5700  
 FAX : +82 +31 427 2371

### 1.2. Details of Applicant

Applicant : Siemens Automotive Systems Corporation  
 Address : 403-2, Saeum-dong, Ichon-city, Kyungki-do, Korea  
 Contact Person : Sung Min Jang  
 Phone No. : +82 +31 645 4864  
 Fax No. : +82 +31 637 0371

### 1.3. Description of EUT

<b>Kind of Product</b>	Smart Key ECU
<b>Model Name</b>	IPM
<b>Serial Number</b>	N/A
<b>Power Supply</b>	DC 12 V
<b>Frequency Range</b>	Tx: 125 kHz
<b>Modulation Technique</b>	ASK(Tx)
<b>Frequency Generation</b>	X-Tal
<b>Number of Channels</b>	1 CH(Tx)
<b>Operating Conditions</b>	-20 °C ~ + 60 °C
<b>Antenna Type</b>	Fixed Type(Loop Coil Antenna)

### 1.4. Details of Modification

-N/A

*The results shown in this test report refer only to the sample(s) tested unless otherwise stated. This test report cannot be reproduced, except in full, without prior written permission of the Company.*

### 1.5. Test Equipment List

EQUIPMENT	MANUFACTURER	MODEL	CAL DUE.
Spectrum Analyzer	H.P.	8593E	Sep. 2007
Test Receiver	Rohde & Schwarz	ESHS10	Aug. 2007
Loop Antenna	Rohde & Schwarz	HFH2-Z2	Sep. 2007
Anechoic Chamber	SY Corporation	L x W x H 9.6 x 6.4 x 6.4	Aug. 2007

*The results shown in this test report refer only to the sample(s) tested unless otherwise stated. This test report cannot be reproduced, except in full, without prior written permission of the Company.*

## 1.6. Summary of Test Results

The EUT has been tested according to the following specifications:

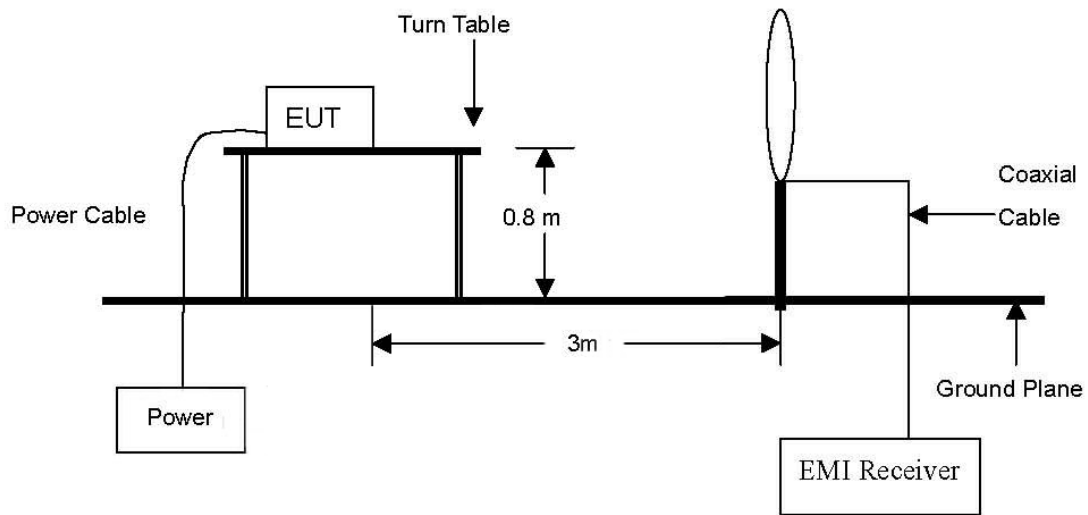
APPLIED STANDARD:FCC Part15, Subpart C		
Standard Section	Test Item	Result
15.205(a) 15.209(a)	Band Edge, Radiated emission, Spurious Emission and Field Strength of Fundamental	Complied

*The results shown in this test report refer only to the sample(s) tested unless otherwise stated. This test report cannot be reproduced, except in full, without prior written permission of the Company.*

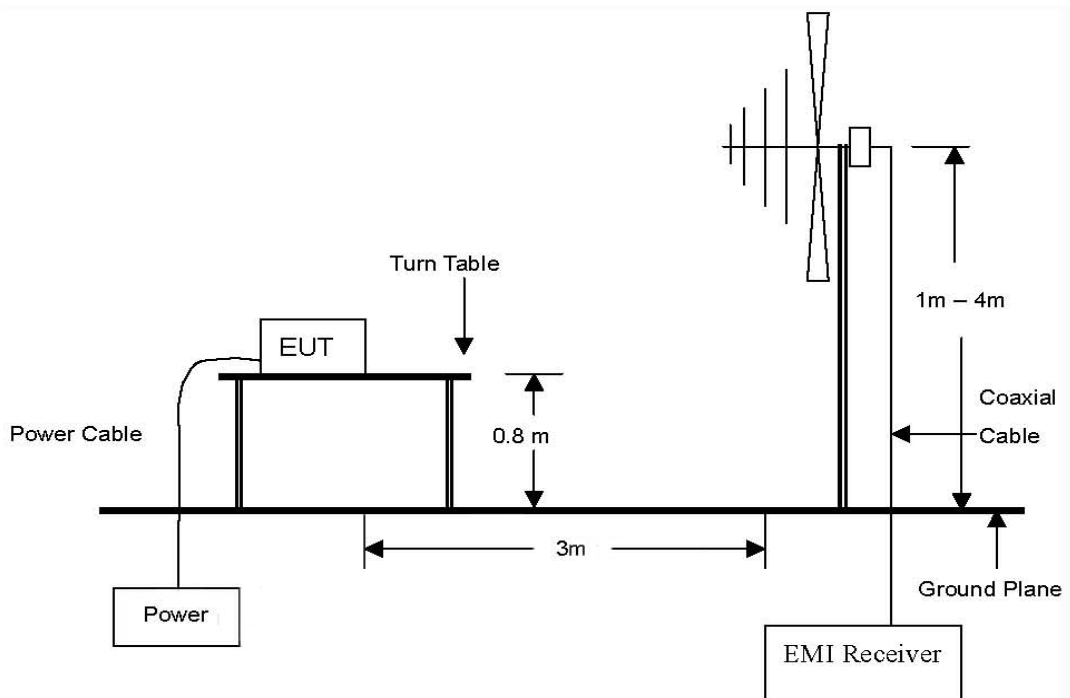
## 2. Field Strength of Fundamental

### 2.1. Test Setup

The diagram below shows the test setup that is utilized to make the measurements for emission from 9 kHz to 30 MHz Emissions.

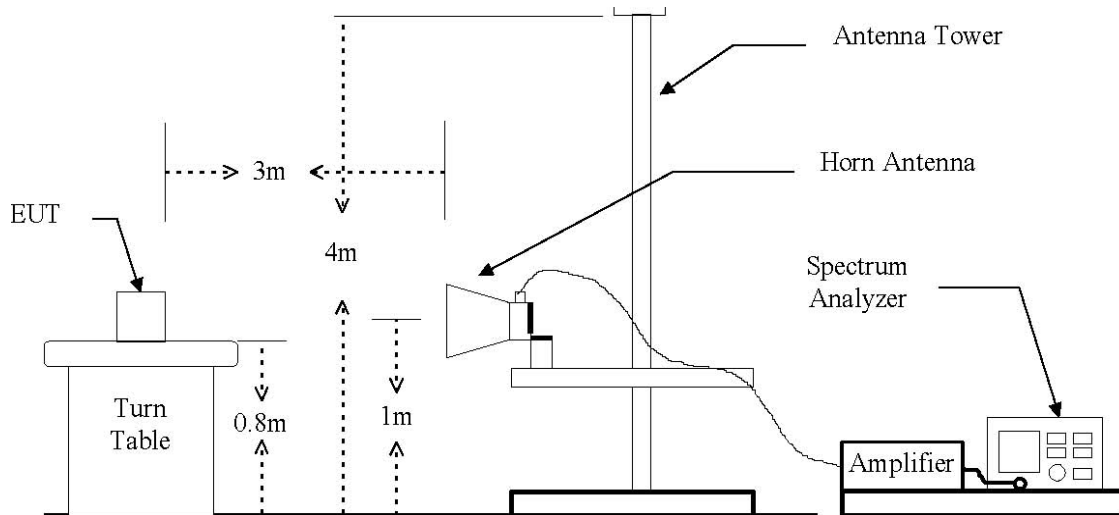


The diagram below shows the test setup that is utilized to make the measurements for emission from 30 MHz to 1 GHz Emissions.



*The results shown in this test report refer only to the sample(s) tested unless otherwise stated. This test report cannot be reproduced, except in full, without prior written permission of the Company.*

The diagram below shows the test setup that is utilized to make the measurements for emission from 1 GHz to 18 GHz Emissions.



*The results shown in this test report refer only to the sample(s) tested unless otherwise stated. This test report cannot be reproduced, except in full, without prior written permission of the Company.*

## 2.2. Limit

### 2.2.1. Radiated emission limits, general requirements

Except as provided elsewhere in this Subpart, the emissions from an intentional radiator shall not exceed the field strength levels specified in the following table:

Frequency (MHz)	Field Strength (microvolts/meter)	Measurement Distance (meter)
0.009 – 0.490	2400/F(kHz)	300
0.490 – 1.705	2400/F(kHz)	30
1.705 – 30.0	30	30
30 -88	100**	3
88 -216	150**	3
216 - 960	200**	3
Above 960	500	3

\*\* Except as provided in paragraph (g), fundamental emissions from intentional radiators operating under this Section shall not be located in the frequency bands 54-72 MHz, 76-88 MHz, 174-216 MHz or 470-806 MHz. However, operation within these frequency bands is permitted under other sections of this Part, e.g., Sections 15.231 and 15.241

### 2.2.2. Periodic operation in the band 40.66-40.70 MHz and above 70 MHz

In addition to the provisions of Section 15.205, the field strength of emissions from intentional radiators operated under this Section shall not exceed the following:

Fundamental Frequency (MHz)	Field Strength of Fundamental (microvolts/meter)	Field Strength of Spurious Emissions (microvolts/meter)
40.66 – 47.70	2,250	225
70 - 130	1,250	125
130 – 174	1,250 to 3,750 **	125 to 375 **
174 – 260	3,750	375
260 – 470	3,750 to 12,500 **	375 to 1,250 **
Above 470	12,500	1,250

\*\* linear interpolations

Where F is the frequency in MHz, the formulas for calculating the maximum permitted fundamental field strengths are as follows : for the band 130-174 MHz., uV/m at 3 meters = 56.81818(F)-6136.3636; for the band 260-470 MHz, uV/m at 3 meters = 41.6667(F)-7083.333. The maximum permitted unwanted emission level is 20 dB below the maximum permitted fundamental level.

The results shown in this test report refer only to the sample(s) tested unless otherwise stated. This test report cannot be reproduced, except in full, without prior written permission of the Company.



### 2.3. Test Procedures

Radiated emissions from the EUT were measured according to the dictates of ANSI C63.4:2003

#### 2.3.1. Test Procedures for emission from 9 kHz to 30 MHz

- a. The EUT was placed on the top of a rotating table 0.8 meters above the ground at a 3 meter anechoic chamber test site. The table was rotated 360 degrees to determine the position of the highest radiation.
- b. Then antenna is a loop antenna is fixed at one meter above the ground to determine the maximum value of the field strength. Both parallel and perpendicular of the antenna are set to make the measurement.
- c. For each suspected emission, the EUT was arranged to its worst case and then the table was turned from 0 degrees to 360 degrees to find the maximum reading.
- d. The test-receiver system was set to Peak Detect Function and Specified Bandwidth with Maximum Hold Mode.

#### 2.3.2. Test Procedures for emission from 30 MHz to 1000 MHz

- a. The EUT was placed on the top of a rotating table 0.8 meters above the ground at a 3 meter anechoic chamber test site. The table was rotated 360 degrees to determine the position of the highest radiation.
- b. During performing radiated emission below 1 GHz, the EUT was set 3 meters away from the interference receiving antenna, which was mounted on the top of a variable-height antenna tower. During performing radiated emission above 1 GHz, the EUT was set 1 meter away from the interference-receiving antenna.
- c. The antenna is a broadband antenna, and its height is varied from one meter to four meters above the ground to determine the maximum value of the field strength. Both horizontal and vertical polarizations of the antenna are set to make the measurement.
- d. For each suspected emission, the EUT was arranged to its worst case and then the antenna was tuned to heights from 1 meter to 4 meters and the table was turned from 0 degrees to 360 degrees to find the maximum reading.
- e. The test-receiver system was set to Peak Detect Function and Specified Bandwidth with Maximum Hold Mode.
- f. If the emission level of the EUT in peak mode was 10 dB lower than the limit specified, then testing could be stopped and the peak values of the EUT would be reported. Otherwise the emissions that did not have 10 dB margin would be re-tested one by one using peak, quasi-peak or average method as specified and then reported in a data sheet.

---

*The results shown in this test report refer only to the sample(s) tested unless otherwise stated. This test report cannot be reproduced, except in full, without prior written permission of the Company.*

## 2.4. Test Result

Ambient temperature : 22 °C      Relative humidity : 41 %

The following table shows the highest levels of radiated emissions on both polarizations of horizontal and vertical

### Ant 1

Radiated Emissions			Ant	Correction Factors		Total	FCC Limit	
Frequency (MHz)	Reading (dBuV)	Detect Mode	Pol.	Ant. (dB/m)	Cable (dB)	Actual (dBuV/m)	AV Limit (dBuV/m)	Margin (dB)
0.125	70.3	Q.P.	H	20	0.01	90.31	105.67	15.36

### Ant 2

Radiated Emissions			Ant	Correction Factors		Total	FCC Limit	
Frequency (MHz)	Reading (dBuV)	Detect Mode	Pol.	Ant. (dB/m)	Cable (dB)	Actual (dBuV/m)	AV Limit (dBuV/m)	Margin (dB)
0.125	72.4	Q.P.	H	20	0.01	92.41	105.67	13.26

### Ant 3

Radiated Emissions			Ant	Correction Factors		Total	FCC Limit	
Frequency (MHz)	Reading (dBuV)	Detect Mode	Pol.	Ant. (dB/m)	Cable (dB)	Actual (dBuV/m)	AV Limit (dBuV/m)	Margin (dB)
0.125	72.6	Q.P.	H	20	0.01	91.61	105.67	14.06

The results shown in this test report refer only to the sample(s) tested unless otherwise stated. This test report cannot be reproduced, except in full, without prior written permission of the Company.

**Ant 5**

Radiated Emissions			Ant	Correction Factors		Total	FCC Limit	
Frequency (MHz)	Reading (dBuV)	Detect Mode	Pol.	Ant. (dB/m)	Cable (dB)	Actual (dBuV/m)	AV Limit (dBuV/m)	Margin (dB)
0.125	71.2	Q.P.	H	20	0.01	91.21	105.67	14.46

**Ant 6**

Radiated Emissions			Ant	Correction Factors		Total	FCC Limit	
Frequency (MHz)	Reading (dBuV)	Detect Mode	Pol.	Ant. (dB/m)	Cable (dB)	Actual (dBuV/m)	AV Limit (dBuV/m)	Margin (dB)
0.125	69.9	Q.P.	H	20	0.01	89.91	105.67	15.76

**Ant 7**

Radiated Emissions			Ant	Correction Factors		Total	FCC Limit	
Frequency (MHz)	Reading (dBuV)	Detect Mode	Pol.	Ant. (dB/m)	Cable (dB)	Actual (dBuV/m)	AV Limit (dBuV/m)	Margin (dB)
0.125	72.2	Q.P.	H	20	0.01	92.21	105.67	13.46

**Ant 8**

Radiated Emissions			Ant	Correction Factors		Total	FCC Limit	
Frequency (MHz)	Reading (dBuV)	Detect Mode	Pol.	Ant. (dB/m)	Cable (dB)	Actual (dBuV/m)	AV Limit (dBuV/m)	Margin (dB)
0.125	61.1	Q.P.	H	20	0.01	81.11	105.67	24.56

The results shown in this test report refer only to the sample(s) tested unless otherwise stated. This test report cannot be reproduced, except in full, without prior written permission of the Company.

**Note:**

1. A Peak limit is 20 dB above the average limit.
2. 3m Limit(dBuV/m) =  $20\log(2400/F_{(kHz)})+40\log(300/3)$   
=  $20\log(2400/125)+40\log(300/3)$   
=  $25.67+80$   
= 105.67

---

*The results shown in this test report refer only to the sample(s) tested unless otherwise stated. This test report cannot be reproduced, except in full, without prior written permission of the Company.*

### 3. Spurious Emission

#### 3.1. Test Setup

Same as section 2.1 of this report

#### 3.2. Limit

Same as section 2.2 of this report

#### 3.3. Test Procedures

Radiated emissions from the EUT were measured according to the dictates of ANSI C63.4:2003

##### 3.3.1. Test Procedures for emission from 9 kHz to 30 MHz

- a. The EUT was placed on the top of a rotating table 0.8 meters above the ground at a 3 meter anechoic chamber test site. The table was rotated 360 degrees to determine the position of the highest radiation.
- b. Then antenna is a loop antenna is fixed at one meter above the ground to determine the maximum value of the field strength. Both parallel and perpendicular of the antenna are set to make the measurement.
- c. For each suspected emission, the EUT was arranged to its worst case and then the table was turned from 0 degrees to 360 degrees to find the maximum reading.
- d. The test-receiver system was set to Peak Detect Function and Specified Bandwidth with Maximum Hold Mode.

##### 3.3.2. Test Procedures for emission from 30 MHz to 1000 MHz

- a. The EUT was placed on the top of a rotating table 0.8 meters above the ground at a 3 meter anechoic chamber test site. The table was rotated 360 degrees to determine the position of the highest radiation.
- b. During performing radiated emission below 1 GHz, the EUT was set 3 meters away from the interference receiving antenna, which was mounted on the top of a variable-height antenna tower. During performing radiated emission above 1 GHz, the EUT was set 1 meter away from the interference-receiving antenna.
- c. The antenna is a broadband antenna, and its height is varied from one meter to four meters above the ground to determine the maximum value of the field strength. Both horizontal and vertical polarizations of the antenna are set to make the measurement.
- d. For each suspected emission, the EUT was arranged to its worst case and then the antenna was tuned to heights from 1 meter to 4 meters and the table was turned from 0 degrees to 360 degrees to find the maximum reading.
- e. The test-receiver system was set to Peak Detect Function and Specified Bandwidth with Maximum Hold Mode.
- f. If the emission level of the EUT in peak mode was 10 dB lower than the limit specified, then testing could be stopped and the peak values of the EUT would be reported. Otherwise the emissions that did not have 10 dB margin would be re-tested one by one using peak, quasi-peak or average method as specified and then reported in a data sheet.

---

*The results shown in this test report refer only to the sample(s) tested unless otherwise stated. This test report cannot be reproduced, except in full, without prior written permission of the Company.*

### 3.4. Test Result

Ambient temperature : 22 °C      Relative humidity : 41 %

The following table shows the highest levels of radiated emissions on both polarizations of horizontal and vertical

#### Ant 1

Radiated Emissions			Ant	Correction Factors		Total	FCC Limit	
Frequency (MHz)	Reading (dBuV)	Detect Mode	Pol.	AF/CL (dB/m)/(dB)	Amp Gain (dB)	Actual (dBuV/m)	AV Limit (dBuV/m)	Margin (dB)
0.238	19.35	Q.P.	H	20 / 0.01	-	39.36	99.64	60.28
Above 0.300	Not Detected							

#### Ant 2

Radiated Emissions			Ant	Correction Factors		Total	FCC Limit	
Frequency (MHz)	Reading (dBuV)	Detect Mode	Pol.	AF/CL (dB/m)/(dB)	Amp Gain (dB)	Actual (dBuV/m)	AV Limit (dBuV/m)	Margin (dB)
0.238	19.38	Q.P.	H	20 / 0.01	-	39.39	99.64	60.25
Above 0.300	Not Detected							

#### Ant 3

Radiated Emissions			Ant	Correction Factors		Total	FCC Limit	
Frequency (MHz)	Reading (dBuV)	Detect Mode	Pol.	AF/CL (dB/m)/(dB)	Amp Gain (dB)	Actual (dBuV/m)	AV Limit (dBuV/m)	Margin (dB)
0.238	19.37	Q.P.	H	20 / 0.01	-	39.38	99.64	60.26
Above 0.300	Not Detected							

The results shown in this test report refer only to the sample(s) tested unless otherwise stated. This test report cannot be reproduced, except in full, without prior written permission of the Company.

**Ant 5**

Radiated Emissions			Ant	Correction Factors		Total	FCC Limit	
Frequency (MHz)	Reading (dBuV)	Detect Mode	Pol.	AF/CL (dB/m)/(dB)	Amp Gain (dB)	Actual (dBuV/m)	AV Limit (dBuV/m)	Margin (dB)
0.238	19.33	Q.P.	H	20 / 0.01	-	39.34	99.64	60.30
Above 0.300	Not Detected							

**Ant 6**

Radiated Emissions			Ant	Correction Factors		Total	FCC Limit	
Frequency (MHz)	Reading (dBuV)	Detect Mode	Pol.	AF/CL (dB/m)/(dB)	Amp Gain (dB)	Actual (dBuV/m)	AV Limit (dBuV/m)	Margin (dB)
0.238	19.10	Q.P.	H	20 / 0.01	-	39.11	99.64	60.53
Above 0.300	Not Detected							

**Ant 7**

Radiated Emissions			Ant	Correction Factors		Total	FCC Limit	
Frequency (MHz)	Reading (dBuV)	Detect Mode	Pol.	AF/CL (dB/m)/(dB)	Amp Gain (dB)	Actual (dBuV/m)	AV Limit (dBuV/m)	Margin (dB)
0.238	19.38	Q.P.	H	20 / 0.01	-	39.39	99.64	60.25
Above 0.300	Not Detected							

**Ant 8**

Radiated Emissions			Ant	Correction Factors		Total	FCC Limit	
Frequency (MHz)	Reading (dBuV)	Detect Mode	Pol.	AF/CL (dB/m)/(dB)	Amp Gain (dB)	Actual (dBuV/m)	AV Limit (dBuV/m)	Margin (dB)
0.238	16.78	Q.P.	H	20 / 0.01	-	36.79	99.64	62.85
Above 0.300	Not Detected							

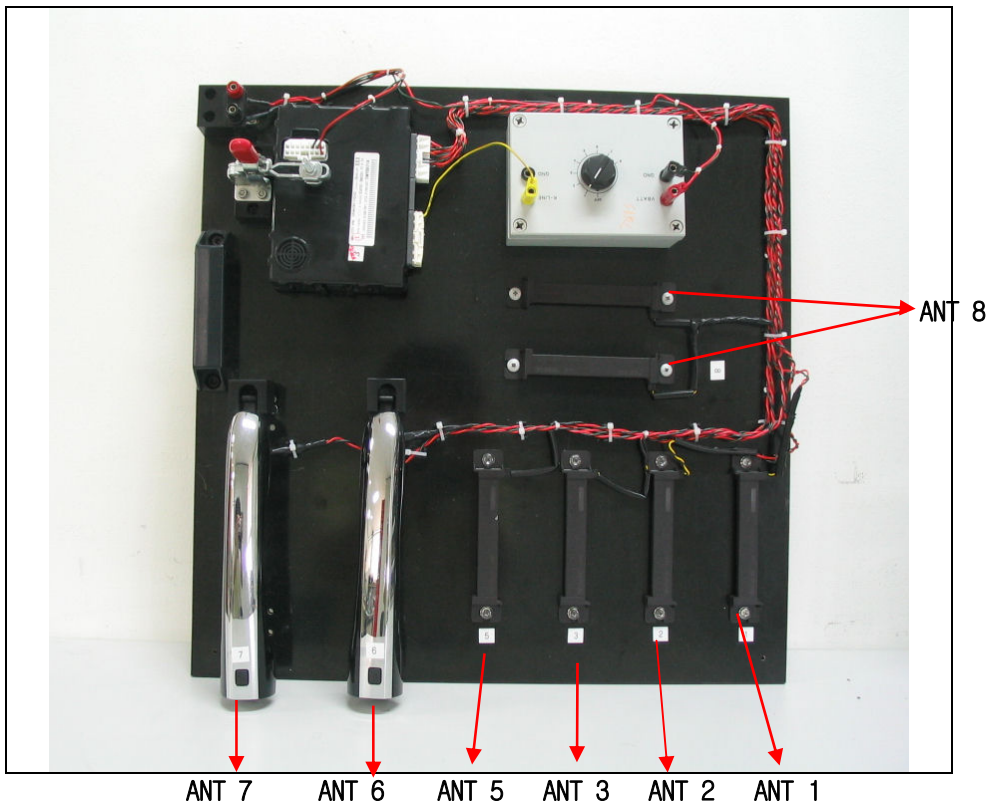
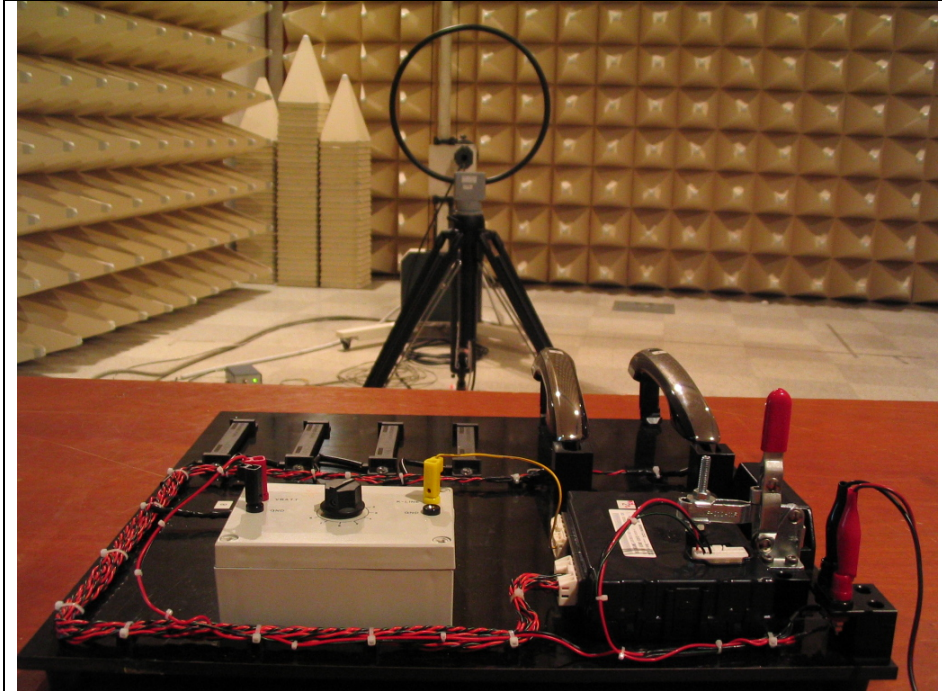
**Note:**

1. A Peak limit is 20 dB above the average limit.
2. Other Spurious Frequencies were not detected up to 0.3 MHz.

The results shown in this test report refer only to the sample(s) tested unless otherwise stated. This test report cannot be reproduced, except in full, without prior written permission of the Company.



**Appendix A. Photo of Field Strength & Spurious Emission Test**



*The results shown in this test report refer only to the sample(s) tested unless otherwise stated. This test report cannot be reproduced, except in full, without prior written permission of the Company.*



---

**Appendix B. Photos of the EUT****Front View of EUT****Rear View of EUT**

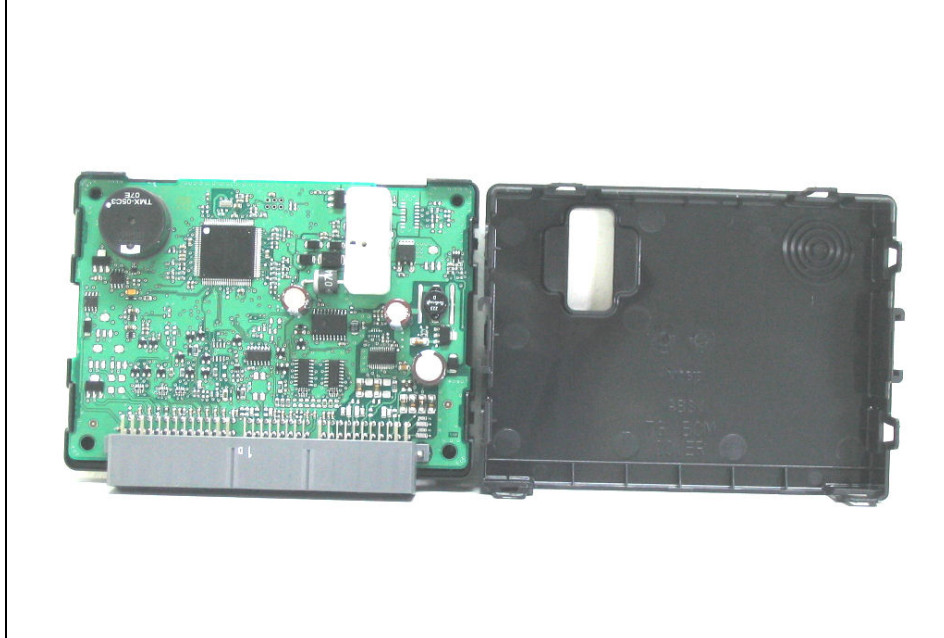
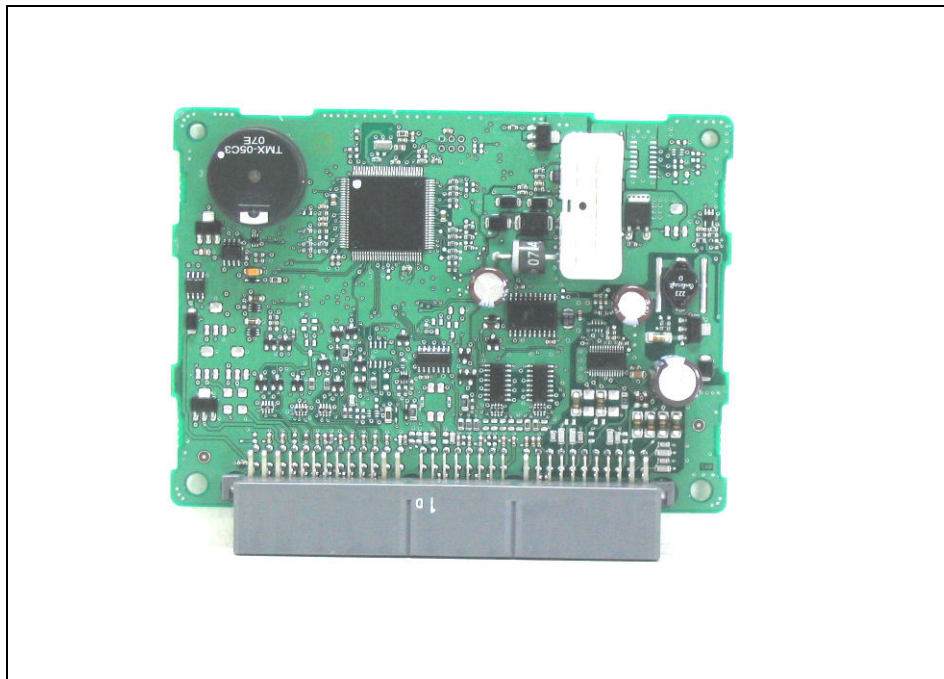
---

*The results shown in this test report refer only to the sample(s) tested unless otherwise stated. This test report cannot be reproduced, except in full, without prior written permission of the Company.*

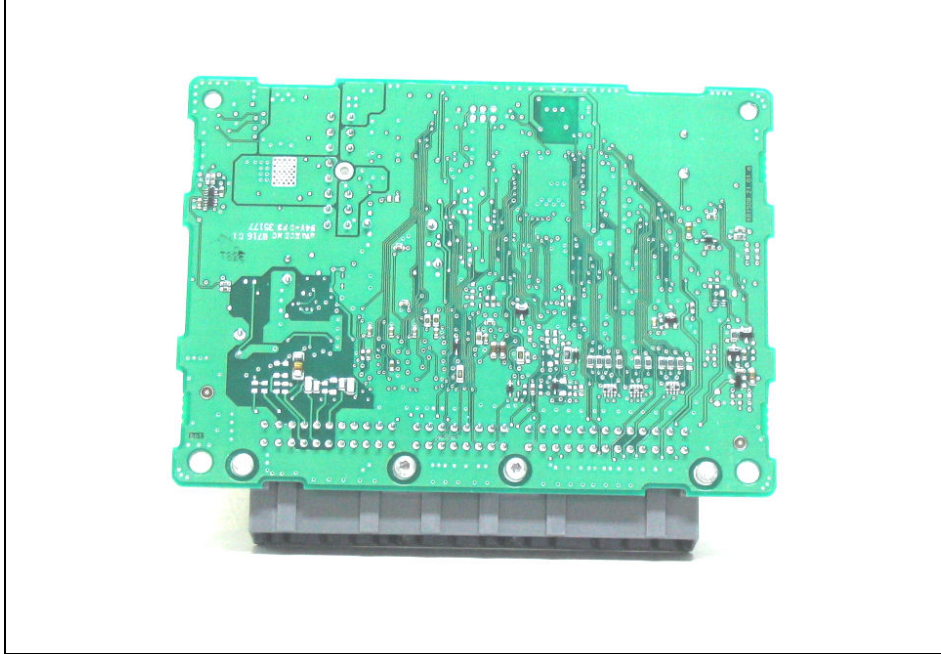
**Right View of EUT****Left View of EUT**

---

*The results shown in this test report refer only to the sample(s) tested unless otherwise stated. This test report cannot be reproduced, except in full, without prior written permission of the Company.*

**Inner of EUT****Top View of Main-board**

*The results shown in this test report refer only to the sample(s) tested unless otherwise stated. This test report cannot be reproduced, except in full, without prior written permission of the Company.*

**Bottom View of Main-board**

*The results shown in this test report refer only to the sample(s) tested unless otherwise stated. This test report cannot be reproduced, except in full, without prior written permission of the Company.*