

东莞市森泰电子有限公司
Dongguan MiaoTEC Electronics Co.,Ltd.

承认书
Specification For Approval

客户名称
(CUSTOMER):

云卓科技有限公司

品名
(DESCRIPTION):

RF Antenna ASSEMBLY
1.13 Cable 黑色 L270mm + 2.4/5.8G FPC+IPEX PLUG

客户料号
(PART NO):

CP1903

料号
(PART NO):

500101-00120-000

送样日期
(DATE):

2023.11.23

版本
Revision:

A1

承认号码
(APPROVED
NO):

MT.承-231106-001

CUSTOMER APPROVED BY

APPROVAL

CHIEF

SUPERVISOR

SUPPLIER SIGNATURE

APPROVAL

CHECK

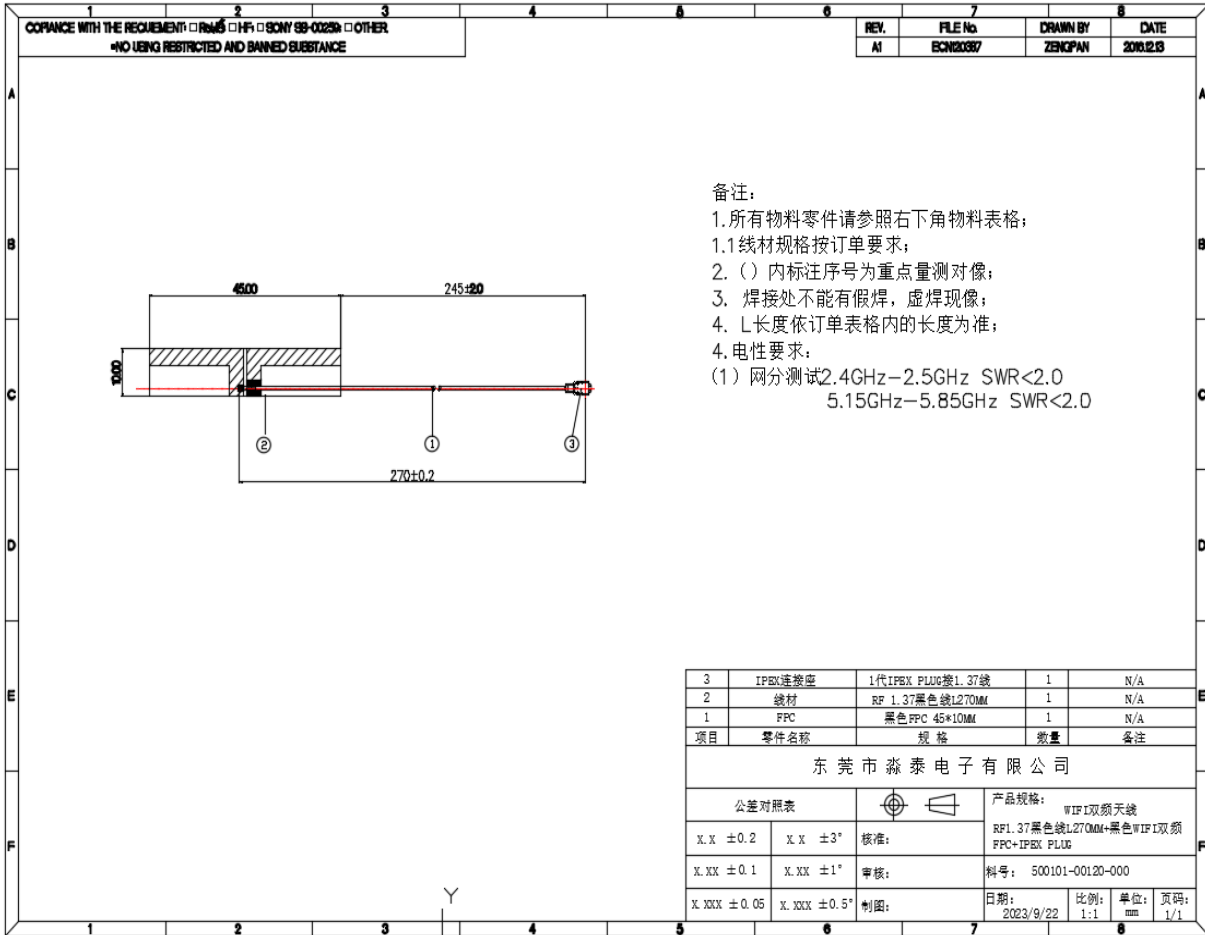
DESIGN

东莞市森泰电子有限公司
Dongguan MiaoTEC Electronics Co.,Ltd.

电气参数 Electrical Specifications		
频率范围 Frequency range (MHz)	2.4-2.5GHz	5.15-5.85GHz
带宽 Bandwidth (MHz)	100MHz	700MHz
增益 Gain (dBi)	2dBi	4dBi
半功率波瓣宽度 Half-power beam width(°)	H:360 V:14	
电压驻波比 VSWR	≤3.5	
输入阻抗 Input Impedance(Ω)	50	
极化方式 Polarization	垂直Vertical	
最大功率 Maximum input power (W)	50	
雷电保护 Lightning protection	直流接地 DC Ground	
接头型号 Input connector type	1代IPEX PLUG	
机械参数 Mechanical Specifications		
天线尺寸 Dimensions (mm)	见工程图	
天线重量 Antenna weight (kg)	2g	
工作温度 Operating temperature (°C)	~40-55	
天线颜色 Antenna color	White(黑色)	

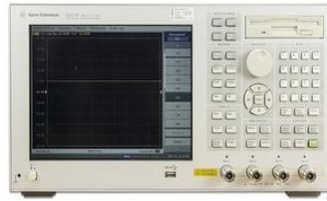
产品图纸

Product drawing



Parameter Test

E5071B

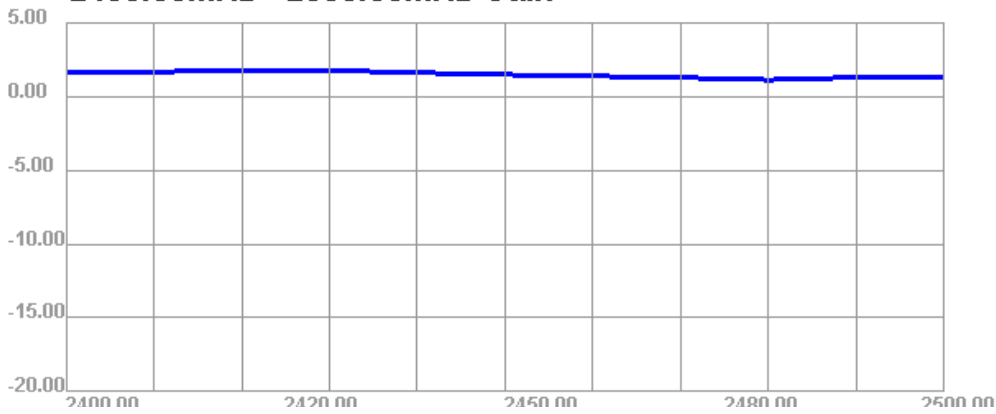


Antenna Frequency (2400-2500MHZ) - (5150-5850MHZ)

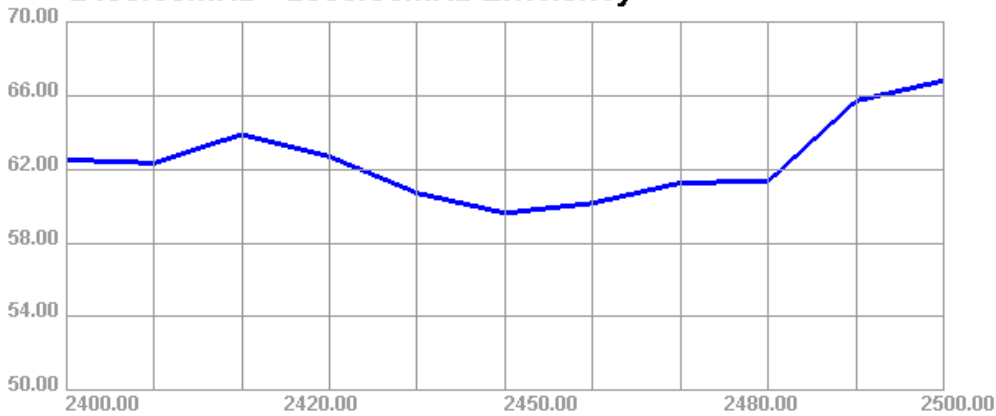
Frequency	2400	2450	2500				
	MHZ	MHZ	MHZ				
Return Loss	-28.906	-18.597	-14.802				
Frequency	5150	5250	5530	5470	5597	5725	5850
	MHZ	MHZ	MHZ	MHZ	MHZ	MHZ	MHZ
Return Loss	-17.242	-18.352	-17.567	-15.889	-15.929	-12.679	-15.944

Passive Test For WIFI2400										
Freq (MHz)	Effi (%)	Effi (dB)	Gain (dBi)	Gain (dBd)	UHS (%)	DHIS (%)	Max (dB)	Min (dB)	irectivit (dBi)	Beamwidth (3dB)
2400	62.51	-2.04	1.61	-0.54	32.554	29.958	1.61	-13	3.65	30
2410	62.34	-2.05	1.66	-0.49	31.967	30.372	1.66	-12.16	3.71	30
2420	63.89	-1.95	1.8	-0.35	32.254	31.638	1.8	-11.29	3.75	30
2430	62.69	-2.03	1.77	-0.38	31.174	31.515	1.77	-10.6	3.79	120
2440	60.71	-2.17	1.61	-0.54	29.81	30.899	1.61	-10.28	3.78	120
2450	59.63	-2.25	1.48	-0.67	28.967	30.66	1.48	-10.23	3.73	30
2460	60.16	-2.21	1.38	-0.77	28.998	31.166	1.38	-10.34	3.59	30
2470	61.26	-2.13	1.28	-0.87	29.212	32.053	1.28	-10.7	3.41	60
2480	61.35	-2.12	1.13	-1.02	28.796	32.558	1.13	-11.06	3.25	60
2490	65.71	-1.82	1.29	-0.86	30.206	35.505	1.29	-10.98	3.12	60
2500	66.81	-1.75	1.27	-0.88	30.073	36.738	1.27	-10.82	3.02	60

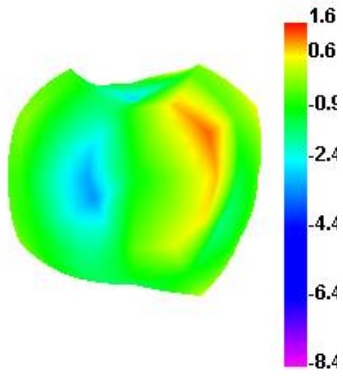
2400.00MHz - 2500.00MHz Gain



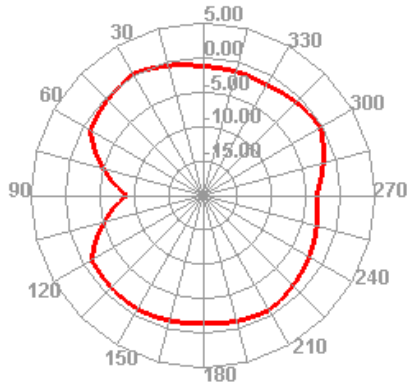
2400.00MHz - 2500.00MHz Efficiency



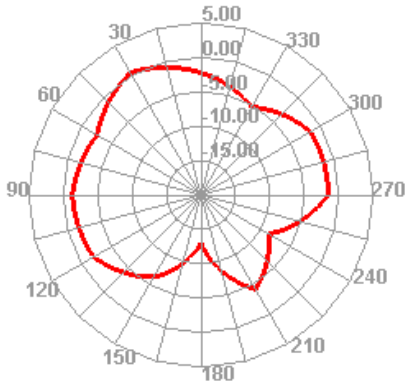
2400.000MHz



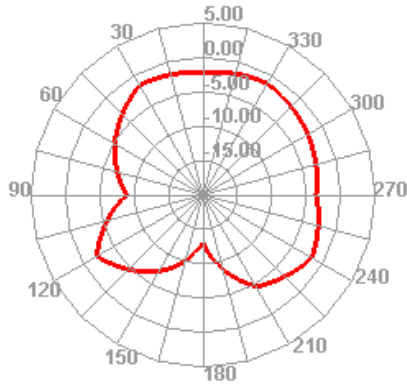
2400.000MHz H



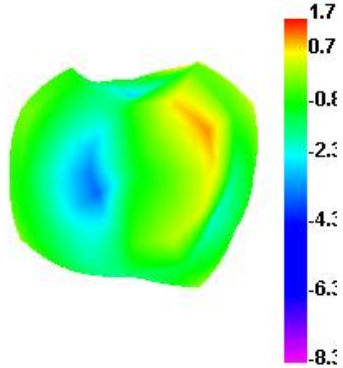
2400.000MHz E1



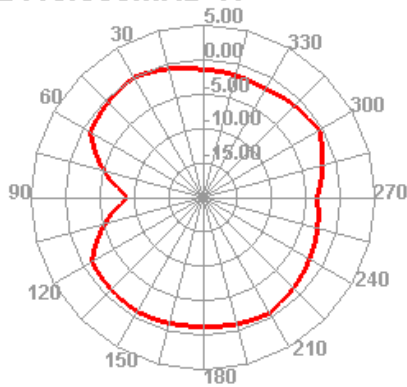
2400.000MHz E2



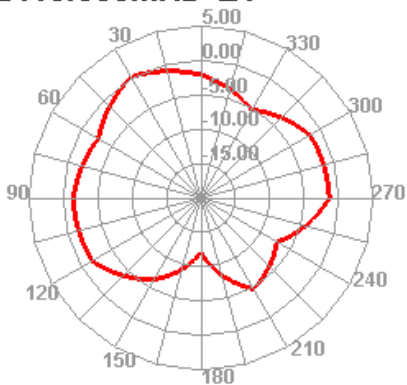
2410.000MHz



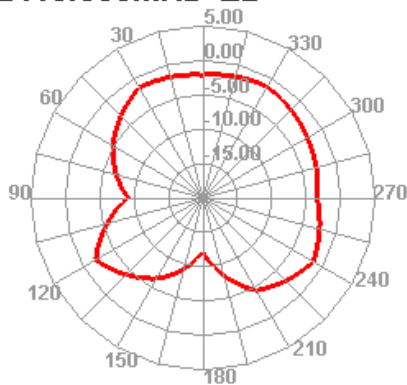
2410.000MHz H



2410.000MHz E1

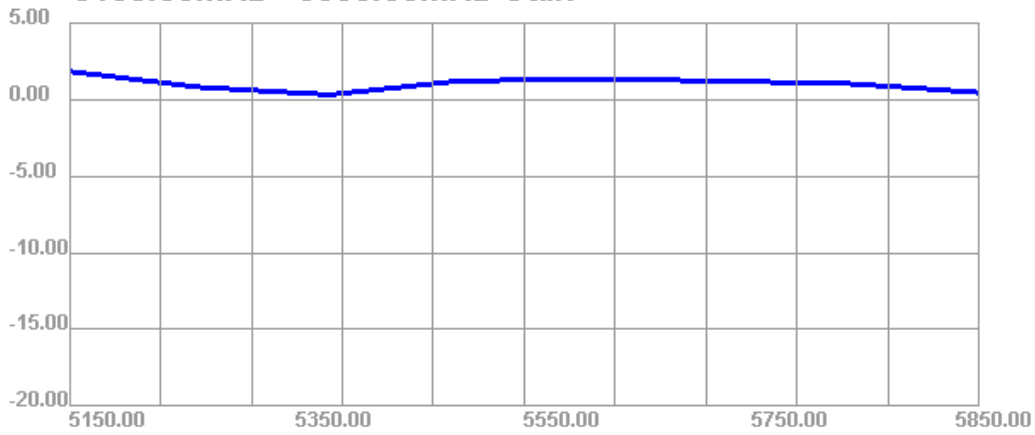


2410.000MHz E2

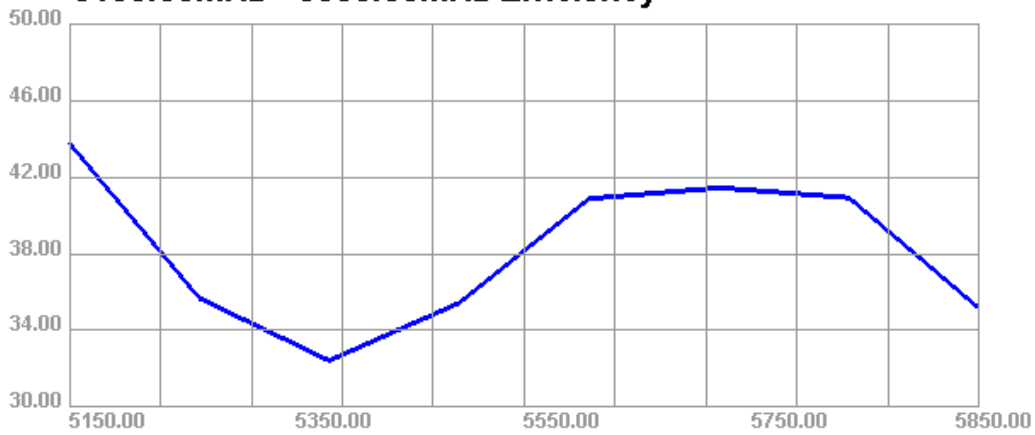


Passive Test For WIFI-5G										
Freq (MHz)	Effi (%)	Effi (dB)	Gain (dBi)	Gain (dBd)	UHS (%)	DHIS (%)	Max (dB)	Min (dB)	Directivity (dBi)	Beamwidth (3dB)
5150	43.77	-3.59	1.83	-0.32	26.607	17.162	1.83	-15.26	5.42	60
5250	35.69	-4.47	0.81	-1.34	21.348	14.342	0.81	-15.16	5.28	60
5350	32.43	-4.89	0.31	-1.84	18.864	13.567	0.31	-18.24	5.2	90
5450	35.45	-4.5	1.21	-0.94	21.424	14.026	1.21	-18.44	5.71	60
5550	40.88	-3.88	1.35	-0.8	24.811	16.07	1.35	-22.05	5.23	60
5650	41.45	-3.82	1.21	-0.94	24.395	17.056	1.21	-17.25	5.03	60
5750	40.93	-3.88	1.03	-1.12	23.579	17.349	1.03	-17.35	4.91	120
5850	35.16	-4.54	0.46	-1.69	20.197	14.966	0.46	-14.91	5	90

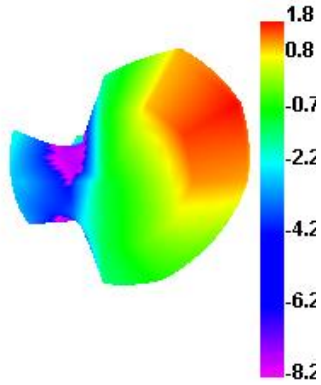
5150.00MHz - 5850.00MHz Gain



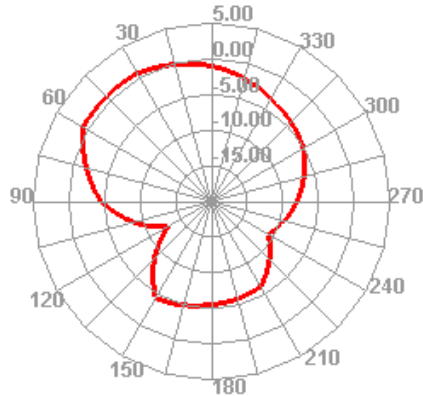
5150.00MHz - 5850.00MHz Efficiency



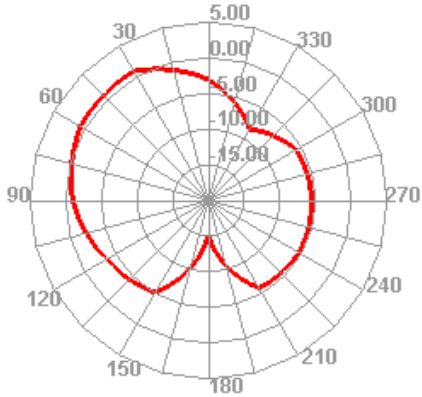
5150.000MHz



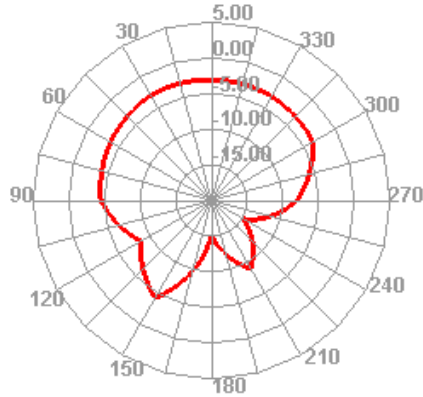
5150.000MHz H



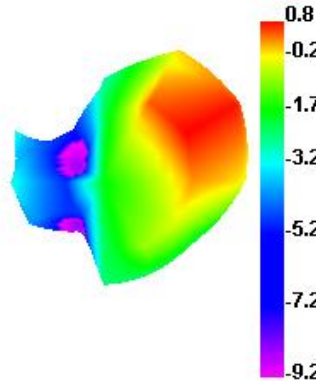
5150.000MHz E1



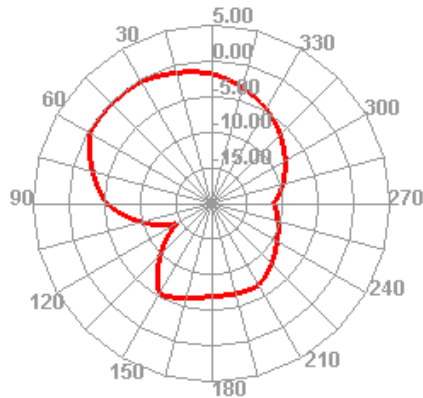
5150.000MHz E2



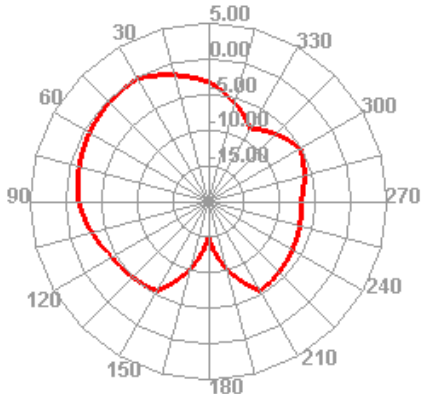
5250.000MHz



5250.000MHz H



5250.000MHz E1



5250.000MHz E2

