

深圳市极速技术有限公司

CF22 蓝牙天线样品承认书
BT Antenna Product Approval

时间：2023-02-20

深圳市极速技术有限公司

电话：86-755-8326-6570

传真：86-755-8325 5400

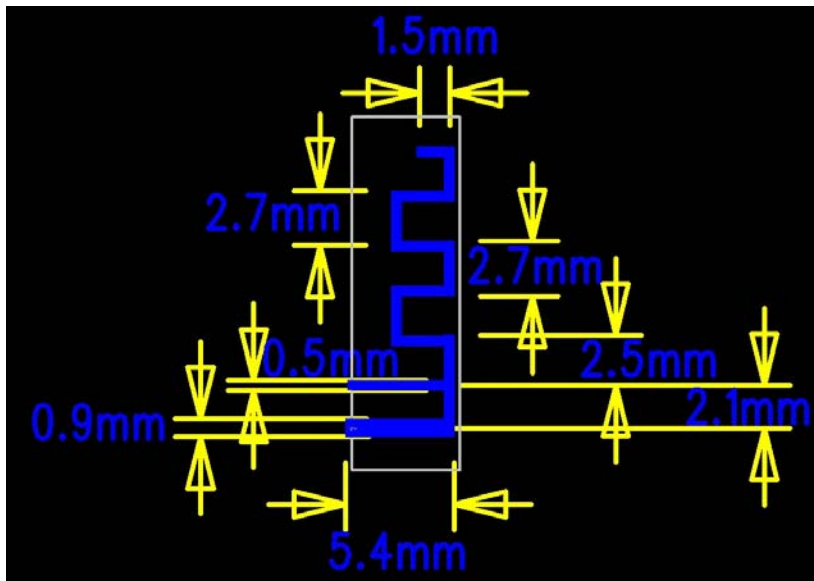
地址：深圳市龙华区民治大道嘉熙业广场 1246

1. Antenna introduction

Our Bluetooth antenna is directly made on the PCB board, the antenna is copper and spray tin process, copper foil thickness: H/H0Z, the plate is FR-4 thickness 1.0mm material.

2. Antenna configuration

1.size : 14.5*5.5*2.5*0.5mm



2.real picture:



3. antenna parameter

The Bluetooth antenna operates at 2402-2480 MHz, and resonates in this band. The following table shows the main parameters of the antenna.

Bluetooth PCB antenna	
Frequency (MHz)	2402 ~ 2480 MHz
VSWR	≤ 1.53
Impedance	50 Ohm Nominal
Radiation	Omni-directional
Gain (Peak)	2.10 dBi
Polarization	Linear, Vertical
Admitted Power	2W
Connector	Tin

4、Antenna gain detection

Spectrum Detector:

PK

Test Date :

Oct 15, 2021

Test By:

Andy

Temperature:

28°C

Test Result:

PASS

Humidity :

55 %

Modulation:

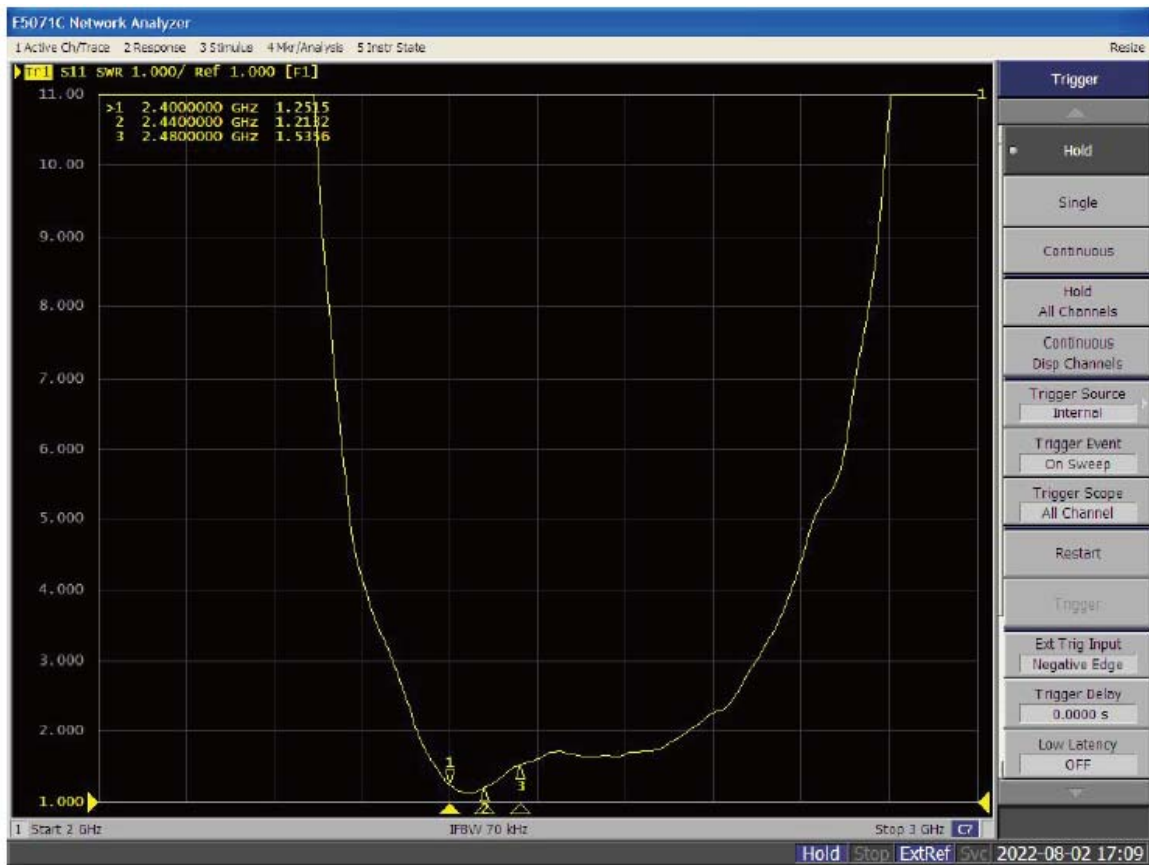
GFSK

最大增益值

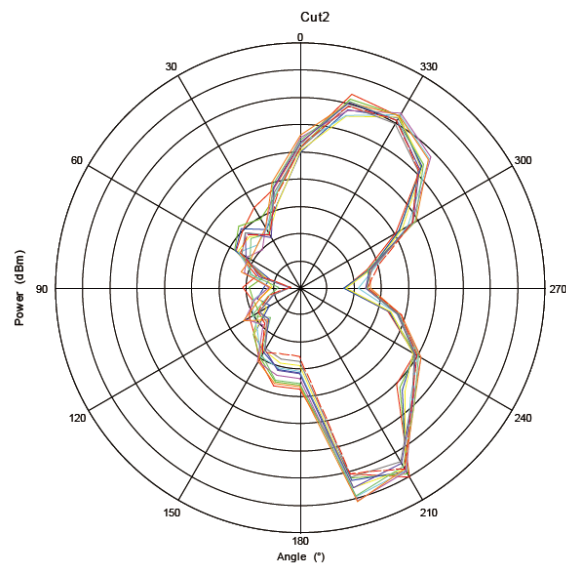
Frequency(MHz)	Gain(dBi)
2400	1.91
2410	2.01
2420	1.90
2430	1.86
2440	1.94
2450	2.04
2460	2.08
2470	2.10
2480	2.07
2490	2.07
2500	2.12

5 . VSWR

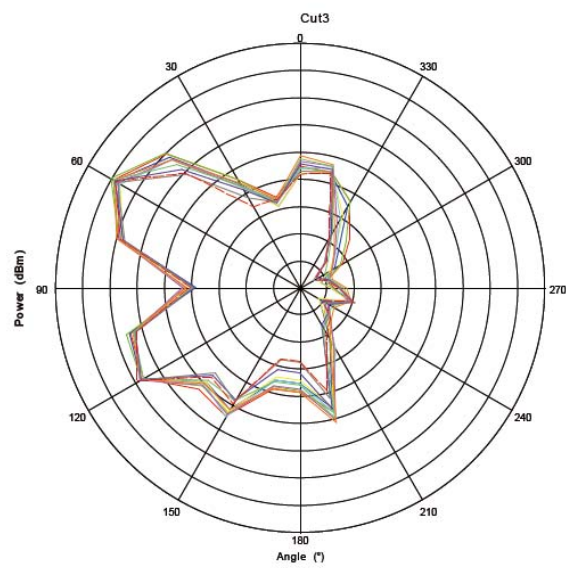
Frequency(MHz)	VSWR
2400	1.25
2440	1.21
2480	1.53



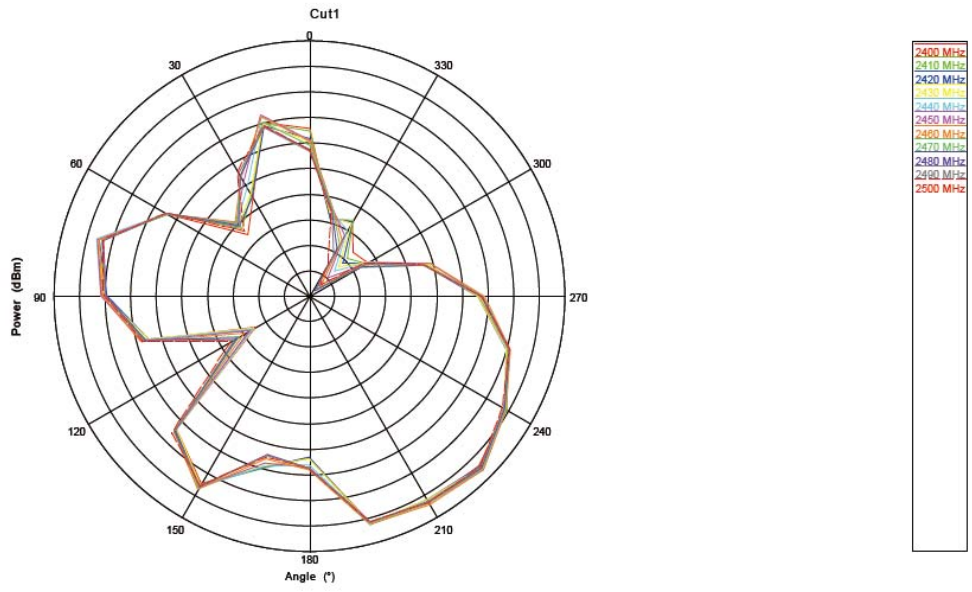
6 . 2D Radiation Pattern



Phi=0°

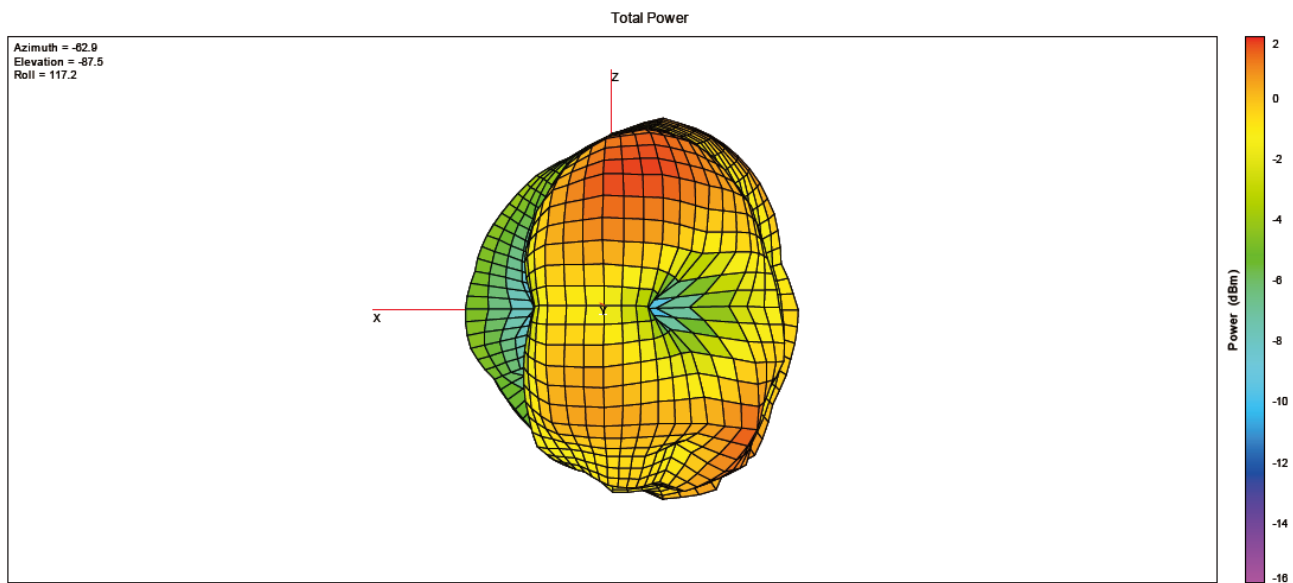


Phi=90°



Theta=90°

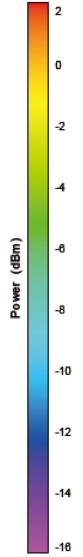
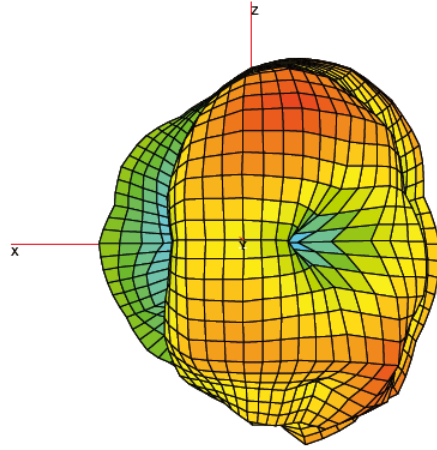
7 . 3D Radiation Pattern



2400MHz

Total Power

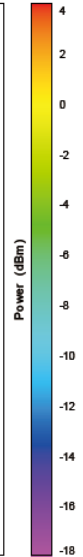
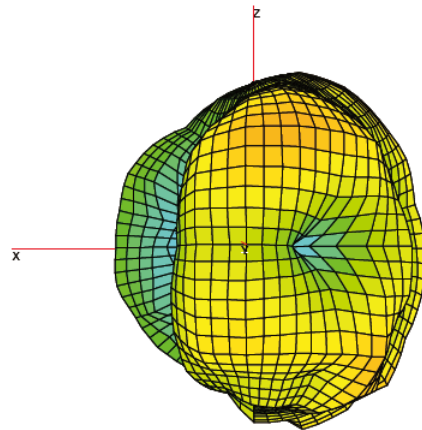
Azimuth = -62.9
Elevation = -87.5
Roll = 117.2



2440MHz

Total Power

Azimuth = -62.9
Elevation = -87.5
Roll = 117.2



2480MHz