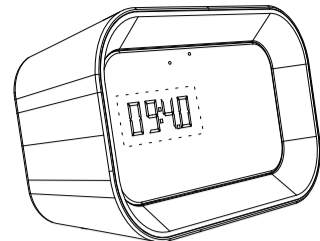




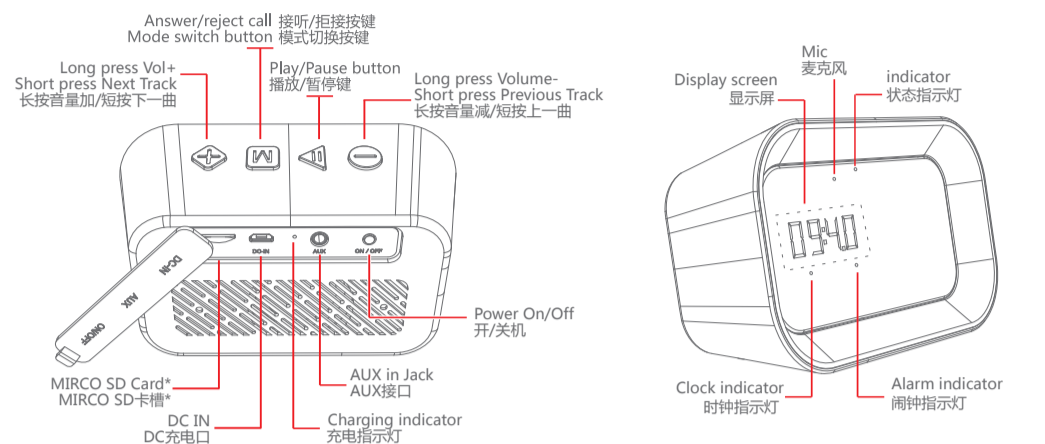
BLUETOOTH SPEAKER MANUAL

蓝牙音箱使用说明

H2-C



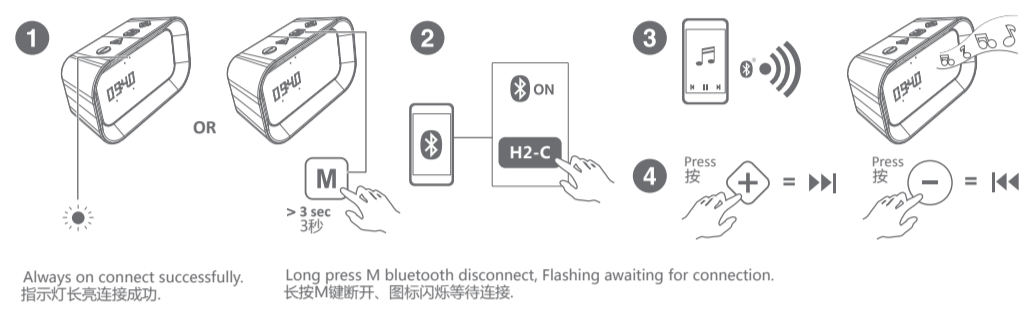
Structure Introduction/功能示意图 >>>



Mode Button 模式键
Change from Bluetooth → Radio → MicroSD → Aux-in
循环模式: 蓝牙 → FM → SD → Aux-in

AUX mode: long press M / D and short press +/- is invalid
AUX模式: 长按M/暂停键无效, 短按+/-按键无效

Bluetooth/蓝牙模式 >>>

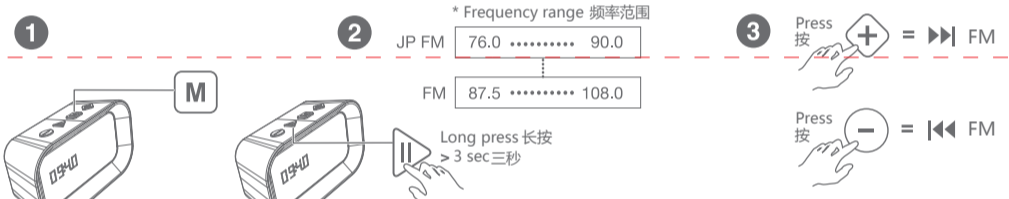


Call/通话 >>>



FM Radio/收音机播放 >>>

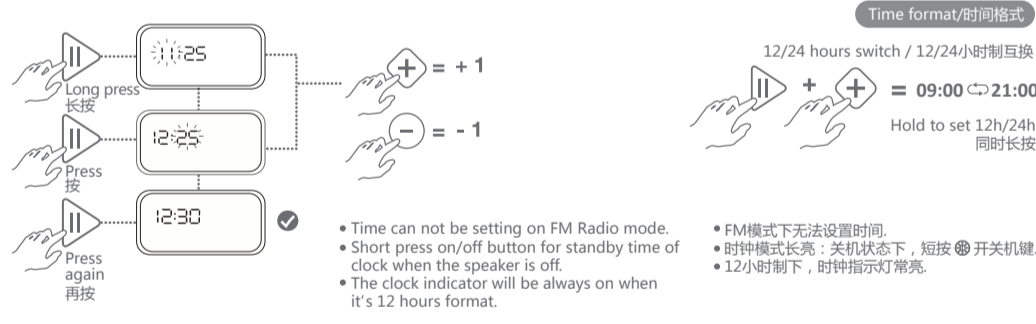
Auto scanning / 自动搜台



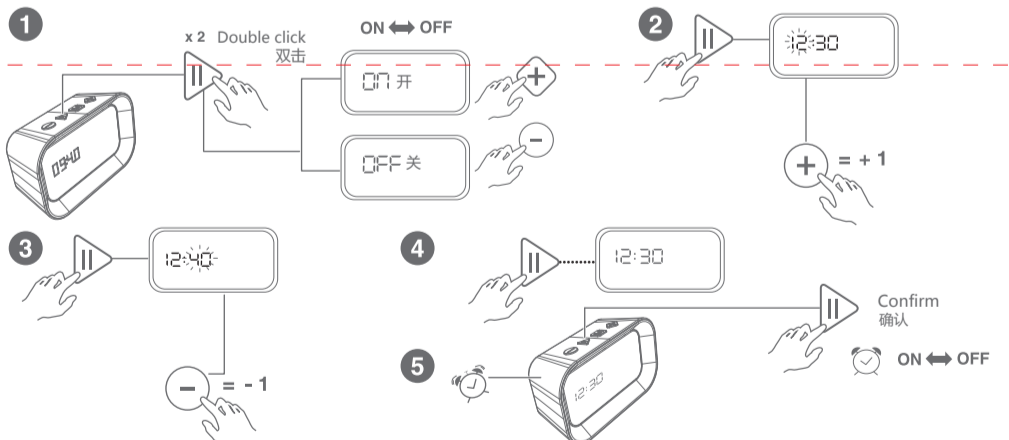
FM Radio Manual / 手动搜台



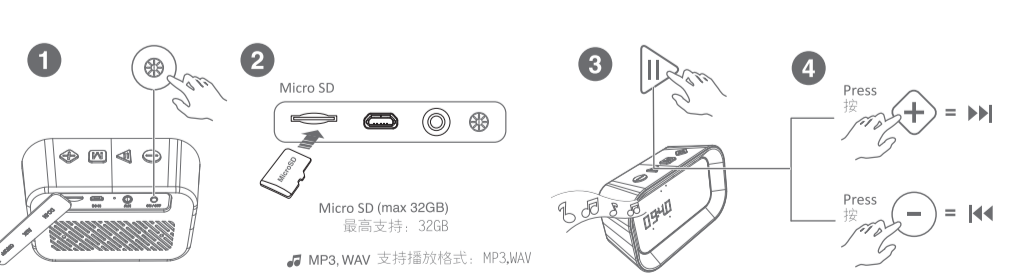
Time setting/时钟设置 >>>



ALARM CLOCK SETTING AND TURNOFF/闹钟设置关闭 >>>



SD Card: Playback/SD卡播放 >>>



OTHER/其它说明 >>>

Charging/充电

Charging via a computer through a USB cable or to buy USB charger separately.
使用USB数据线连接至电脑进行充电或者另行购买USB充电器。

Restore factory setting/恢复出厂设置

Long press "+" and "-" at the same time, the display will enter into zero clearing.
同时长按+和-键, 显示屏清零。

Reset/复位

Use needles through the AUX hole to short press the reset button.
用针状物透过AUX耳机孔短按一下复位开关, 可重新复位进入时间模式;

Indicator/指示灯

Blue indicator flashes/功能指示灯 - 蓝灯闪烁	Status of waiting for connecting/未连接蓝牙, 等待配对模式
Blue indicator remains steadily on/功能指示灯 - 蓝灯常亮	Bluetooth Connected/FM mode/Micro SD card inserted/Aux cable Connected/成功进入蓝牙/AUX IN/TF卡模式/FM模式
Low power indicator flashes/功能指示灯 - 红灯快闪	Battery voltage lower than 3.3V, Red light flashes means your speaker needs to be charged/音箱进入低电压状态, 需要充电
Red charging indicator light/充电点处 - 红灯常亮	Red indicator is on when charging, and off when fully charged/音箱此时充电中, 充满之后该灯熄灭
Clock indicator constant light/时钟指示灯常亮	12 hours format/时钟12小时制
Alarm indicator constant light/闹钟指示灯常亮	Alarm is set successfully/闹钟设置成功

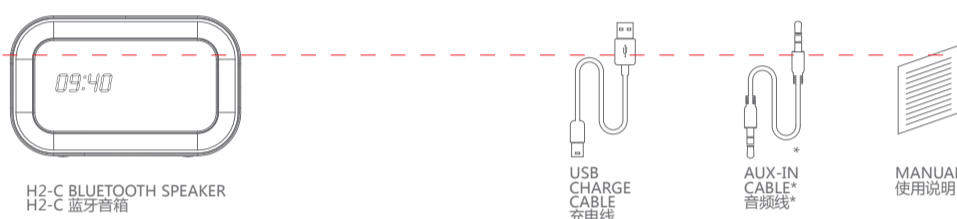
Note: Your speaker will power off automatically within 15 minutes if you did not pair it with playback devices in order to save energy.
注: 蓝牙连接15分钟后, 音箱自动关机, 进入节能模式。

SPECIFICATIONS/规格参数 >>>

Bluetooth version/蓝牙版本:	4.2
Driver spec/喇叭规格:	Ø45mm 4Ω/ 5W
Size/尺寸:	L135xW81.7xH53mm
Net weight/净重:	220.0g +/- 5.0g
Frequency response/频率响应:	100Hz-16KHz
Sensitivity/灵敏度:	80dB
S/N ratio/信噪比:	≥75dB
Distortion/失真度:	≤0.3% @1W
Working distance/工作范围:	about 33 feet
Transmission Power/传输功率:	Class2
Bluetooth profiles/支持蓝牙协议:	A2DP, AVRCP, HFP
Frequency range/蓝牙频率范围:	2.400-2.480GHz
Working current/工作电流:	≤500mA
Working voltage/工作电压:	3.4-4.2V
Charging voltage/充电电压:	DC 5V
Charging current/充电电流:	≤600MA
Static standby current under shutdown status 关机状态下的静态待机电流:	≤50 uA
Static standby current under power on status 开机状态下的静态待机电流:	≤30 uA
Battery capacity/电池容量:	500MAH
Charging time/充电时间:	about 2H
Playtime at full volume/播放时间 (100%音量下)	about 1H
Playtime at 60% volume/播放时间 (60%音量下)	about 2H
Waterproof/防水等级:	IPX5

IPX5: No harm for 3-5 minutes water flushing, but don't soak! 用水冲洗3-5分钟无任何伤害, 请勿浸泡!

CONTAIN/包装清单 >>>



WARRANTY POLICY/保修政策 >>>

Your Bluetooth speaker is covered by a limited warranty. It is backed by 1 year performance warranty against any manufacturing defects in material or workmanship from the date of original purchase. This warranty entitles the purchaser to get the product repaired or replaced under the following conditions:

- The warranty applies to the original purchaser, Proof of original purchase is required
- The warranty does not cover the damage caused by misuse, abuse or improper storage.
- In no event shall be responsible for any direct, incidental, consequential or other damages of any kind.

基本信息

凡属于正常使用情况下由于产品本身质量问题引起的故障, 7天包退, 15天内包换, 1年内保修。
保修政策
用户请妥善保管好保修卡有购机时经销商开具的购机发票或收据, 在维修时将出示以上凭证作为保修依据。

例外条款 (以下情况不属于保修范畴)

- 无产品编码
- 非原厂部件或用户自行更换部件, 且该部件未从厂家或厂家指定经销商处购买消耗材料 (如外壳、接插部件的自然消耗, 磨损及老化)
- 因错误安装、操作, 或在非产品所规定的工作环境下使用造成的故障或损坏 (如温度过高、过低, 过于潮湿或干燥, 海拔过高, 或电流或不稳定, 零地电压过大等等)
- 因事故、滥用 (包括超出工作负荷)、误用造成的损坏
- 因保管不当 (如鼠害、液体渗入等) 造成的损坏
- 因擅自拆卸修理或越权改装或滥用而造成的故障或损坏
- 因非授权的维修中心进行维修造成的损坏
- 因人为或自然灾害所造成的故障或损坏

WARNING/安全警告 >>>

- 为避免产品使用超负荷电源, 引起发热或火灾, 请在“规格”中所指定的电源条件下操作本机;
- 为防触电, 请勿湿手拔插电源插头;
- 如机器突然发生冒烟或者其他异常, 请迅速拔掉电源线, 避免引起意外事故, 在请有资格的专业人员检查之后方可继续使用;
- 如机器内部受到水淋或受潮, 请将本机置于通风处晾干, 切忌高温烘干本机, 否则容易烧毁或使本机的元器件失效;
- 电源线和音频线不能被挤压、拉扯、打结、悬挂重物或被践踏, 以防线体绝缘层遭到破坏, 而导致短路或接触不良等情况发生;
- 不要将本机放置或靠近裸露的火焰源, 如点燃的蜡烛。
- 锂电池安全温度不能超过80°C。

- To reduce the risk of fire or electric shock, be sure the electric circuits are not overloaded.
- To reduce the risk of electric shock, be sure not plug the adapter with wet hands.
- Unplug the power cable if your device is smoking or abnormal and seek professional help from your nearest service center, be sure not detach the device by yourself.
- To reduce the risk of fire or electric shock, do not expose this product to rain or moisture. Liquids can cause a failure and/or a fire hazard.
- In order to prevent a short circuit, the power cable and audio cable should not be twisted or dragged in case of short circuit.
- Do not place the speaker near any open flame sources, such as lighted candles.
- The safety temperature of Lithium Battery should not exceed 80°C.

The company reserves the right to the product modification for appearance and function, which is subject to change without prior notice.
在本使用说明书所包含的资料内容正确与完整, 如有任何错误或遗漏恕不承担任何责任自保留权利可随时变更本手册所提供的硬件及软件而无须事先声明。

OPTIONAL* 为选配项

FCC WARNING >>>

This device complies with Part 15 of the FCC Rules. Operation is subject to the following two conditions:
(1) this device may not cause harmful interference, and
(2) this device must accept any interference received, including interference that may cause undesired operation. Changes or modifications not expressly approved by the party responsible for compliance could void the user's authority to operate the equipment.

NOTE: This equipment has been tested and found to comply with the limits for a Class B digital device, pursuant to Part 15 of the FCC Rules. These limits are designed to provide reasonable protection against harmful interference in a residential installation. This equipment generates, uses and can radiate radio frequency energy and, if not installed and used in accordance with the instructions, may cause harmful interference to radio communications. However, there is no guarantee that interference will not occur in a particular installation. If this equipment does cause harmful interference to radio or television reception, which can be determined by turning the equipment off and on, the user is encouraged to try to correct the interference by one or more of the following measures:
-- Reorient or relocate the receiving antenna.
-- Increase the separation between the equipment and receiver.
-- Connect the equipment into an outlet on a circuit different from that to which the receiver is connected.
-- Consult the dealer or an experienced radio/TV technician for help.

The company reserves the right to the product modification for appearance and function, which is subject to change without prior notice.

FCC Statement

This equipment has been tested and found to comply with the limits for a Class B digital device, pursuant to part 15 of the FCC Rules. These limits are designed to provide reasonable protection against harmful interference in a residential installation. This equipment generates, uses and can radiate radio frequency energy and, if not installed and used in accordance with the instructions, may cause harmful interference to radio communications. However, there is no guarantee that interference will not occur in a particular installation. If this equipment does cause harmful interference to radio or television reception, which can be determined by turning the equipment off and on, the user is encouraged to try to correct the interference by one or more of the following measures:

- Reorient or relocate the receiving antenna.
 - Increase the separation between the equipment and receiver.
 - Connect the equipment into an outlet on a circuit different from that to which the receiver is connected.
 - Consult the dealer or an experienced radio/TV technician for help.
- Caution: Any changes or modifications to this device not explicitly approved by manufacturer could void your authority to operate this equipment.
This device complies with part 15 of the FCC Rules. Operation is subject to the following two conditions: (1) This device may not cause harmful interference, and (2) this device must accept any interference received, including interference that may cause undesired operation.
RF Exposure Information
The device has been evaluated to meet general RF exposure requirement. The device can be used in portable exposure condition without restriction.