



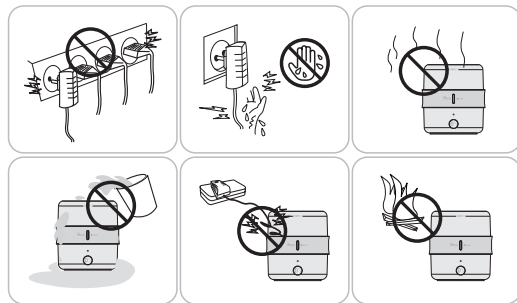
U130 User Manual

1.Preface

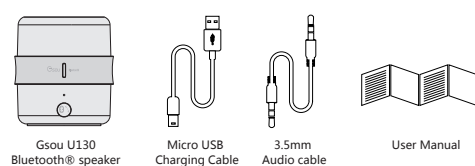
Thanks for purchasing the Gsou U130 Ultra portable Bluetooth® speaker. Please take the time to follow the instructions in this User manual carefully. If you have any queries, please call our national service hotline: 400-0985-400

2.Warnings and Cautions

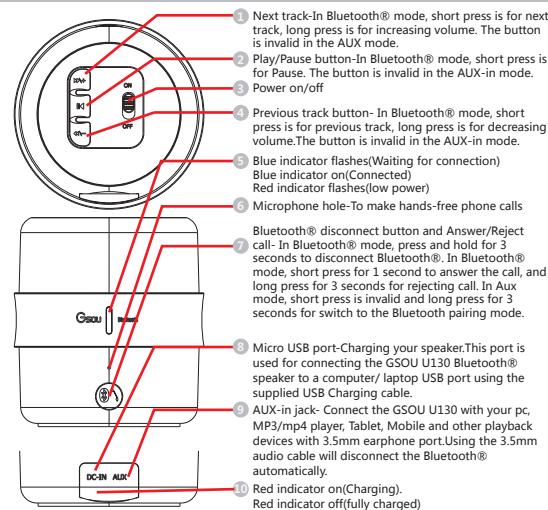
1. To reduce the risk of fire or electric shock, be sure the electrical circuits are not overloaded.
2. To reduce the risk of electronic shock, be sure not to plug the adapter with wet hands.
3. Unplug the power cable if your device is smoking or abnormal and turn to professional assist from your nearest service center, be sure not detach the device yourself.
4. To reduce the risk of fire or electric shock, do not expose this product to rain or moisture. Liquids can cause a failure and/or a fire hazard.
5. The power cable and audio cable can not be twisted or dragged in case of short circuit.
6. Do not place any naked flame sources, such as lighted candles, on or near the apparatus.



三、原厂标配



4. Structure Introduction



5.Indicator instruction

Blue indicator flashes	Waiting for connecting
Blue indicator on(not flashing)	Connected to Bluetooth® source or connected to Aux in device
Low power indicator flashes	Battery voltage lower than 3.3v, Red light flashes when your speaker need to be charged
Red charging indicator light	Red indicator is on when charging, and off when fully charged.

6.Operation Steps

How to connect your U130 with Bluetooth® playback devices?

- Step1: Make sure that your speaker's battery has sufficient power.
- Step 2: Turn on your speaker,it will be in Bluetooth® mode automatically and be ready for connecting. The blue indicator will flash .
- Step 3: Open the Bluetooth® setting on your device, Search the "Gsou U130" device and connect to it. Usually you needn't input passwords for most of Bluetooth playback devices, but due to the Bluetooth version variations, sometimes you need to input the default password

"0000" (four zero) if required.
Step4: The blue light remains on to indicate successful connection.
Step5: Play your music and enjoy the loud but clear sound from your U130.

How to switch to connect to other devices while connecting?

Your U130 could only connect to one Bluetooth® playback device at a time. Turn off the Bluetooth® on your device or long press Bluetooth® button to disconnect,then other devices will be able to connect. and the operation steps will also be same as before.

How to play music by AUX-in?

- Step1: Your GSOU U130 comes with a standard 3.5mm Aux in jack for connecting with other non- Bluetooth® audio devices, eg mobile phones, mp3/mp4 players, pc, tablet pc and etc. Plug one end of the audio cable to the AUX in jack of the speaker and the other end connect to audio source..
- Step2: Your speaker will disconnect the Bluetooth®, switching to the external devices audio input.

How to connect the U130 with your notebook pc by Bluetooth®?

1. In the case of your notebook with the Bluetooth® function.
Step1: Find the Bluetooth® manager: "Start—Setting—Control Panel" .
Step2: Start the Bluetooth® searching function of your notebook, the speaker's blue light flashes when searching for devices.
Step3: The blue indicator light remains on after successfully connecting.
Step4: Play your music and enjoy.
2. In the case of your notebook without Bluetooth® function. Please buy an extra Bluetooth® adaptor. After installing please start the Bluetooth® from the "Control Panel" or the shortcut of your pc, please search for connecting, and the instruction steps are the same as the first case.

7.Recharging

Connect the USB port of PC/laptop with the micro USB port on the speaker using the supplied USB cable

8. Specifications

Dimensions	W : 69.6mm H : 76.6mm
Weight	251.5g
Supported protocol and profile	A2DP , AVRCP , HFE , HFP
Frequency range	2.402-2.480GHz (2.4G ISM)
Speaker	Φ45mm 2Ω 5W
RMS	3W
Frequency response	90HZ-18KHZ
Sensitivity	80db
S/N	≥75 db
Distortion	≤10%
Battery	Built-in 500mA battery
Working current	Max≤350mA
Working voltage	3.7V
DC output	DC 5V

9. Trouble Shooting.

Speaker will not turn on?

- Make sure your speaker battery has sufficient power.

Paired Bluetooth device will not connect?

- If your device requires a pass code, make sure to input "0000" four zero.
- Turn the Gsou U130 speaker off and back on
- Remove the Gsou U130 speaker from the pairing list on your Bluetooth device pairing list (consult the device owner's manual for assistance).Then pair the device and the speaker again.

Speaker indicates a connection, but it's not playing music?

- Turn off or disable Bluetooth on all other paired devices nearby and reconnect the device you want to listen
- Turn the Gsou U130 speaker off and back on

Can not pair the Gsou U130 with my Bluetooth device ?

- Make sure your speaker is discoverable
- Your Bluetooth device maybe out of range-try to move closer to

your speaker

- Make sure your Bluetooth device supports the transfer of audio
- Reset your Bluetooth speaker

No audio from a Bluetooth device?

- Make sure your Gsou U130 is not muted and the volume is up.
- Make sure your Bluetooth device is playing audio and volume is up
- Your Bluetooth device may be out of range, move closer and try
- Turn your Bluetooth speaker off and back on

Poor sound quality from a Bluetooth device?

- Your Bluetooth device may be out of range, move closer and try again
- Move your Bluetooth device and /or Gsou U130 speaker from any device that generates electromagnetic interference, such as another Bluetooth device, cordless phone, microwave oven or wireless router.
- Try to turning off WIFI to improve audio quality
- Make sure your music file is not poor quality.
- Turn your Bluetooth speaker off and back on.

No Audio from AUX source?

- Make sure your connected device is on and playing
- Make sure you speaker is in AUX in mode
- Make sure the audio cable is correctly inserted
- Increase the volume level on the device and speaker

Poor sound quality from AUX source?

- Reduce the volume level on the AUX source
- Make sure the 3.5mm audio cable is fully inserted into the speaker and device.
- Make sure your audio source and music file is not of poor quality

Note:

1. Your speaker will power off automatically within 15 minutes if you did not pair it with playback devices in order to save energy. You need to power on speaker again when use.
2. Bluetooth® compatibility note: U130 can be compatible with most of Bluetooth® devices with the different brands and models, but some individual Bluetooth® devices may have compatibility problem with the U130. If you need further assistance, please contact our technical customer service: 0086-755-83222871.

3.If your speaker paired with over 8 playback devices already. There will be 2 or more seconds delay for scanning and pair with new playback devices. Because your speaker need to scan the previous paired devices firstly to re-pair with them automatically. Simply to hold the previous track and next track button at the same time for 3 seconds to clean all the memory devices and resume default settings.

10.Statement

The Gsou trademark and logo are registered trademarks of Gsou Technology (Shenzhen)Co.,Ltd. All Rights Reserved. All other trademarks, logos or service marks are the property of their respective owners.

11.Limited Warranty

Your Gsou U130 Bluetooth® speaker is covered by a limited warranty. It is backed by a 1 year performance warranty against any manufacturing defects in material or workmanship from the date of original purchase. This warranty entitles the purchaser to get the product repaired or replaced under the following conditions:
●The warranty applies to the original purchaser, Proof of original purchase

is required
●The warranty does not cover the damage caused by misuse, abuse or improper storage.
●In no event shall Gsou be responsible for any direct, incidental, consequential or other damages of any kind.

12.FCC Warnings

This device complies with Part 15 of the FCC Rules. Operation is subject to the following two conditions:
(1) this device may not cause harmful interference, and (2) this device must accept any interference received, including interference that may cause undesired operation.Changes or modifications not expressly approved by the party responsible for compliance could void the user's authority to operate the equipment.
NOTE: This equipment has been tested and found to comply with the limits for a Class B digital device, pursuant to Part 15 of the FCC Rules. These limits are designed to provide reasonable protection against harmful interference in a residential installation. This equipment generates, uses and can radiate radio frequency energy and, if not installed and used in accordance with the instructions, may cause harmful interference to radio communications. However, there is no guarantee that

interference will not occur in a particular installation.
If this equipment does cause harmful interference to radio or television reception, which can be determined by turning the equipment off and on, the user is encouraged to try to correct the interference by one or more of the following measures:
-- Reorient or relocate the receiving antenna.
-- Increase the separation between the equipment and receiver.
-- Connect the equipment into an outlet on a circuit different from that to which the receiver is connected.
-- Consult the dealer or an experienced radio/TV technician for help.
FCC RF warning statement: The device has been evaluated to meet general RF exposure requirement. The device can be used in portable exposure condition without restriction.

