

80.00 mm

80g铜版纸

iWALK®

The Executive™



使用时安全注意事项

请先仔细阅读以下内容,然后再使用iWALK产品:

- 严禁私自将产品进行拆装或粗暴使用;
- 严禁把产品投入或接近火及高温物品以避免发生火灾及爆炸
- 产品不可以放在高温及潮湿的环境中放置或使用,产品的工作温度-10°C-40°C
- 产品使用过程中如果发现异常现象请立即停止使用,并与本公司售后服务部联系咨询

产品规格

项目	参数
产品型号	BKE001
产品名称	The Executive
蓝牙接口	蓝牙3.0
电池容量	锂聚合物电池500mAh
兼容性	iPhone,iPad 系列产品以及大多数带蓝牙配置的智能设备
工作电压	5V
有效工作时长	300h (连续工作时间)
充电时长	2小时
工作距离	10M
对码距离	<5M
键盘按键	标准微软US布局设计

产品描述



产品配件

- 产品
- MICRO USB 充电线

键盘功能键图解

(以下所有功能均以苹果系列产品测试为准)



fn组合按键适用于iOS系统 cmd与其它键组合使用,以执行特殊功能

操作说明

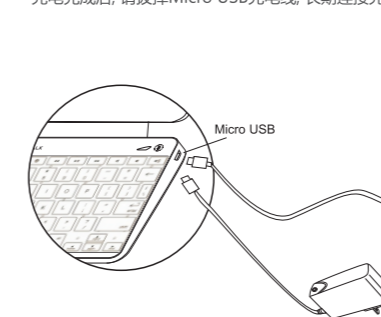
1. 开关机
打开电源开关①, 蓝色电量指示灯③亮, 双色指示灯②红灯亮5秒后开始闪烁。
2. 对码 (配对)
a. 第一次与蓝牙接收设备对码(配对)时, 轻按键盘上的蓝牙按键, 键盘进入对码状态, 在接收设备上搜索 "The Executive bluetooth keyboard" 进行蓝牙配对。蓝牙对码成功后, 下次开机使用时, 键盘会自动连接已对码成功的蓝牙接收设备。
b. 蓝牙连接状态下, 轻触蓝牙开关, 即断开现有连接, 进入新的搜索配对状态。
3. 休眠
蓝牙连接后, 15分钟内若无使用, 则自动进入休眠状态。



*以上对码截图以iPhone 4操作为例

为产品充电

1. 使用Micro USB 充电线连接键盘与电脑充电。
2. 使用Micro USB 充电线连接键盘与5V充电适配器。
3. 打开开关充电, 可边充电边使用键盘。
4. 充电结束后, 电量指示灯全亮。
* 充电完成后, 请拔掉Micro USB充电线, 长期连接充电线, 会降低电池寿命。



产品常见问题

1. 如键盘不可以使用, 请按照以下步骤检查:
重新开启键盘, 检查键盘电量
重新开启蓝牙按键
避免将设备放在金属台面的桌面下方
尽量远离电磁辐射比较大的物品
尽量不要在电子设备和键盘间设置障碍物。
2. 本产品长时间放置不用为什么不能正常工作?
答: 因为本产品长时间放置不用, 使电池电量逐渐耗尽, 给本产品充电约2-3分钟后, 电量指示灯亮起, 即产品可以正常工作。
如产品不经常使用, 请3个月充一次电, 以保证产品的正常使用。

LED说明

1. 双色蓝牙指示灯 (蓝色和红):

	自动连接或搜索配对时, 红蓝双色LED灯交替闪烁
	连接上设备时显示蓝灯, 每5秒闪一次
	搜索20秒后没有连接上蓝牙设备或蓝牙设备断开连接时, 红灯每3秒闪一次, 60秒后灯灭掉, 进入待机状态
	当蓝牙设备重新打开时, 按任意键自动连接, 蓝灯显示每5秒闪一次
	休眠时, 灯全灭

2. 电量指示灯:

- | | |
|--|---|
| | 二个蓝色LED指示灯, 如左图
• 1. 灯全亮: 50-100%电量
• 2. 灯不亮: 5-50%电量
• 3. 2全灭: 小于5%电量 |
| | 充电时状态: 1灯亮一秒, 1.2灯亮一秒, 后全灭, 依次重复。充满后, 1, 2灯全亮。 |
| | 休眠时, 1, 2灯全灭 |

*以上测试结果以苹果产品为例

产品保修卡

感谢您购买本公司的产品。
本产品的保修期为购买之日起12个月, 在此期间遇到质量问题可免费保修卡 (须加盖销售商公章及有效产品S/N号) 享受免费服务。

收费服务—以下情况属于有偿服务范围:

- 无有效的保修卡及保修卡内容不符
- 无产品S/N号或S/N号与保修卡上填写不一致
- 人为损坏 (外力撞击、进水等) 导致故障发生
- 违规操作
- 非服务中心人员自行拆卸或修理
- 因将产品放置于高温或潮湿的环境中所导致的故障
- 不可抗力因素所导致的故障

产品型号	
产品名称	
序列号	
购买日期	
销售商	
维修记录	

地址	
客服日期	
客户名称	

注意: 请务必妥善填写并保留好本保修卡以备保修使用!

iWALK®

The Executive™



Safety precautions

Please read the following carefully before using the iWALK product.

1. Do not disassemble product or rough use.
2. Do not put product into or get near fire or high-temperature objects in order to avoid fire and risks of explosion.
3. Do not leave or use product in a humid or high temperature environment. (operating temperature range: -10°-40°C).
4. Stop using product when abnormal phenomenon happens in the process of use, and get in touch with our after-sales service department.

Specifications

Subject	Data
Model No.	BKE001
Product name	The Executive
Bluetooth ver	Bluetooth 3.0
Battery capacity	500mAh Li-Polymer battery
Compatibility	iPhone, iPad and all other Bluetooth-enabled devices
DC-IN	5V
Working Hours	300Hours
Charging time	2Hours
Working distances	10M
Pairing distances	< 5M
Keyboard layout	US layout

Product information



Package contents

- Product
- Micro USB Charging Cable

Keyboard function key

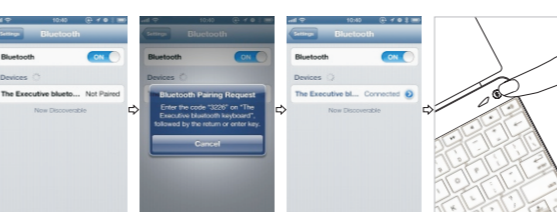
(Based on the Apple products)



Fn+ Home/End/PageUp/ PageDown with iOS system CMD + other function keys

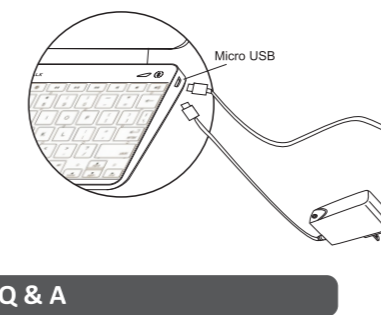
Option manual

1. Turn on/off the keyboard
Turn on the power switch, LED power indicator turns up. Two-tone LED indicator will light up and be blinking after 5 seconds
2. Pairing steps
a: Press the bluetooth button, keyboard will start to search the Bluetooth devices, then select "The Executive Bluetooth keyboard" on the device.
After the first pairing, the Keyboard will connect with this Bluetooth devices automatically in the future.
b: When the keyboard connected with the Bluetooth devices, press the Bluetooth button, The current connection is terminated, and the keyboard will turn into the new pairing process.
3. Sleep model
When the keyboard is inactive, after 15 minutes it will enter sleep mode automatically



Charging the keyboard

1. Charging The Executive Bluetooth keyboard by connecting the Micro USB charging cable to computer.
2. Charging The Executive Bluetooth keyboard by connecting the Micro USB charging cable to adapter(5V/1A)
3. Turn on the power switch, The Keyboard can be used during the charging process.
4. LED power indicator lights up after the keyboard fully charged.
* Disconnect the charging cable from the keyboard once the keyboard is fully charged. Incorrect use may result in reduced battery performance.



Q & A

1. If the keyboard is unresponsive, please try the steps below:
Reboot the keyboard, Check the batteries
Repress the Bluetooth button
Avoid to place the keyboard under the metal table facet
Avoid to place the keyboard near the high radiation product or place
Avoid to place barrier between Keyboard and Bluetooth devices
2. Why does product cannot work normally after it was left unused for an extended duration?
When product is left unused for an extended duration, it discharges gradually until no power remained. However, product can work normally after 2-3 minutes' charging, if you won't use the product often, we suggest to charge the product every 3 months to maintain the product's best functionality.

LED Indication

1. Two-tone Bluetooth LED indicator(Blue/Red)

	During connecting or pairing, Blue/Red LED flash alternatively
	Connected with the Bluetooth devices, Blue LED blinks in every 5 seconds
	The pairing process failed or Bluetooth disconnect, the red LED will blink in every 3 seconds and then turns off after 60 seconds. The keyboard turns to standby model.
	When Bluetooth device reboot, press any key on keyboard to reconnect the Bluetooth device. Blue LED will blink in every 5 seconds.
	In sleep model, the Two-tone LED will turn off

2. LED power indicator

- | | |
|--|---|
| | Two Blue LED power indicators
- 2 LED light ON: 50-100%
- 1 LED lights ON: 5-50%
- LED off, remaining power less than 5% |
| | During Charging Keyboard process
1) One LED blinks 1 second, then both LED blink 1 second, then lights off. Then repeated until both LED light up, the Keyboard fully charged. |
| | During the sleep model All lights will turn off |

*Take iPhone as example.

Warranty card

Thank you for purchasing this iWALK product.
Our product's warranty period is 12 months starting from the day of purchase. Within the warranty period free service will be provided if the product has any quality problems (requires warranty card with distributor's official stamp and valid S/N).

Paid service: customers will incur a repair charge in the following cases:

- No valid warranty card or warranty card incompatible.
- No S/N or S/N incompatible with warranty card
- Malfunctions caused by artificial damages (like external impact or submerging product into water, etc.)
- Misuse of the product. User has not followed the instructions in the manual.
- Product disassembled or repaired by individual or unauthorized service center.
- Damages caused by storing the product in a hot or humid environment.

Model no.	
Product name	
Serial no.	
Date of purchase	
Manufacturer	
Maintenance record	

Address	
Customer service date	
Customer name	

(Please complete warranty card and use for any future warranty service)

118.00 mm

FCC Statement:

This device complies with part 15 of the FCC Rules. Operation is subject to the following two conditions: (1) This device may not cause harmful interference, and (2) this device must accept any interference received, including interference that may cause undesired operation.

This equipment has been tested and found to comply with the limits for a Class B digital device, pursuant to part 15 of the FCC Rules. These limits are designed to provide reasonable protection against harmful interference in a residential installation. This equipment generates, uses and can radiate radio frequency energy and, if not installed and used in accordance with the instructions, may cause harmful interference to radio communications. However, there is no guarantee that interference will not occur in a particular installation. If this equipment does cause harmful interference to radio or television reception, which can be determined by turning the equipment off and on, the user is encouraged to try to correct the interference by one or more of the following measures:

- Reorient or relocate the receiving antenna.
- Increase the separation between the equipment and receiver.
- Connect the equipment into an outlet on a circuit different from that to which the receiver is connected.
- Consult the dealer or an experienced radio/TV technician for help.

Caution: Any changes or modifications not expressly approved by the party responsible for compliance could void the user's authority to operate the equipment.