



930-0046-00, Rev 02  
Company Confidential

## Marking Requirements

### **LSNM-0002-X (Light Sensory Network Module – CoreNode)**

DOCUMENT NUMBER: 930-0046-00  
OWNER: Operations  
ORIGINATOR: Christopher Hizer  
STATUS: Released  
LOCATION: Agile

#### CHANGE HISTORY

REVISION	DATE	HANDLED BY	COMMENTS
01	07/11/14	Christopher Hizer	Initial Release: ECO-00560
02	07/24/14	Christopher Hizer	Include Sensor Pod Label: ECO-00574



930-0046-00, Rev 02  
Company Confidential

## Table of Contents

1.0 NETWORK IDENTIFIER

2.0 SENSOR POD

3.0 PRODUCT LABEL

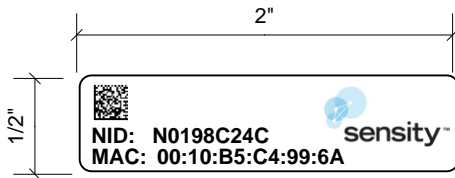
4.0 PLACEMENT LOCATIONS

## 1.0 NETWORK IDENTIFIER

### Font

Font (Size)	Font Type	Requirement	Actual
16.5 x 8mm	--	Sensity Logo	Sensity Logo
8	Arial Bold	Node ID (NID)	Variable: Generated During Test
8	Arial Bold	MAC Address (MAC)	Variable: Generated During Test
5 x 5 mm		Data Matrix Code	NID and MAC

### Network Identifier Example

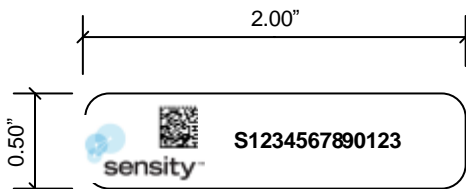


## 2.0 Sensor ID

### Font

Font (Size)	Font Type	Requirement	Actual
16.5 x 8mm	--	Sensity Logo	Sensity Logo
8	Arial Bold	Sensor ID	Variable: Generated During Test
5 x 5 mm		Data Matrix Code	Sensor ID

### Sensor ID Example





930-0046-00, Rev 02  
Company Confidential

### 3.0 PRODUCT LABEL

#### Font

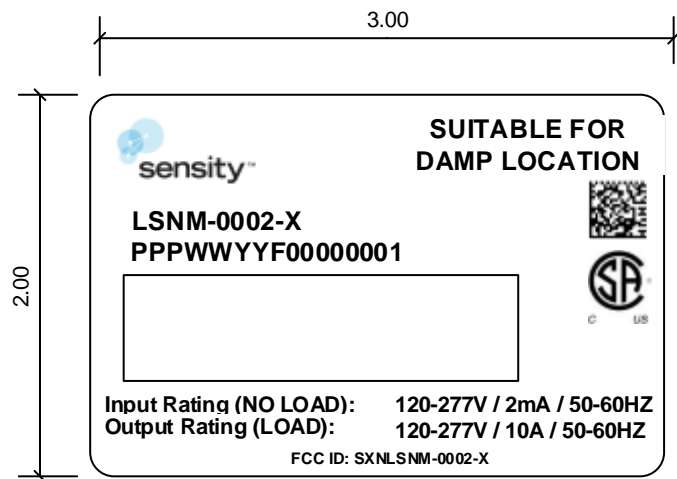
Font Size	Font Type	Requirement	Actual
9 x 20mm		Company Name	Sensity Logo
10	Arial Bold	Model	LSNM-0002-X(Variable: A=2dbi / B=8dbi)
10	Arial Bold	Serial Number	Variable
10	Arial Bold	Environmental Suitability	SUITABLE FOR DAMP LOCATION
8	Arial Bold	Input Electrical Rating	120-277V / 2mA / 50-60Hz
8	Arial Bold	Output Electrical Rating	120-277V / 10A / 50-60Hz
6	Arial Bold	FCC ID	FCC ID: SXNLSNM-0002-X
8 x 8mm		Data Matrix	Model, Serial Number
10 x 10mm		Safety Mark	cCSAus Logo

#### Serial Number Convention

PPP DDDD F SSSSSSS

	Product Family		Manufacturing ID	
P = Product Family				
D = DOM as WWYY	010	LSNM	A	Sunnyvale (HQ)
F = Manufacturing Location				
S = Serial Number (8-digits)				

#### Product Label Example



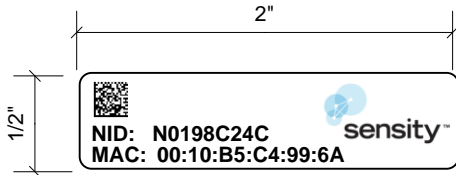


930-0046-00, Rev 02  
Company Confidential

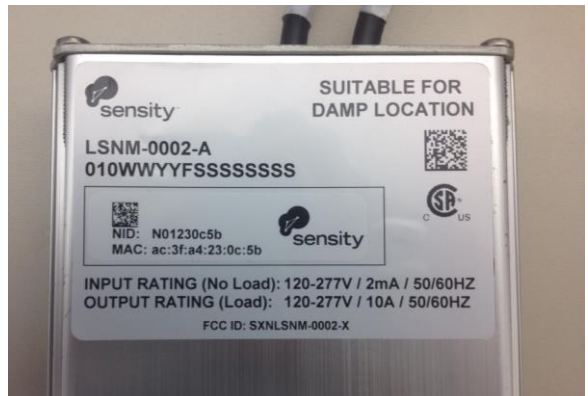
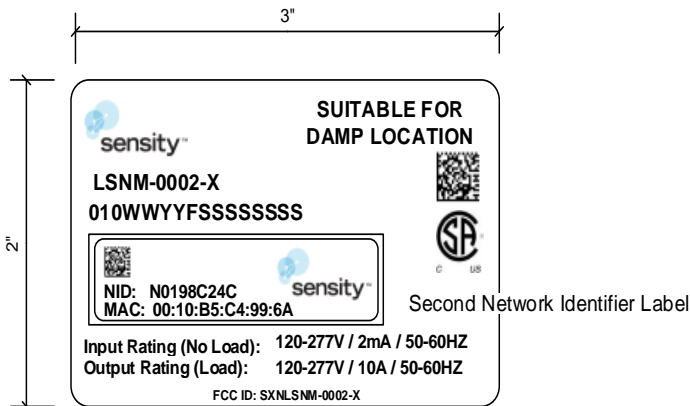
#### 4.0 PLACEMENT LOCATION

##### Micronode Board Level

##### Network Identifier



##### Enclosure Level



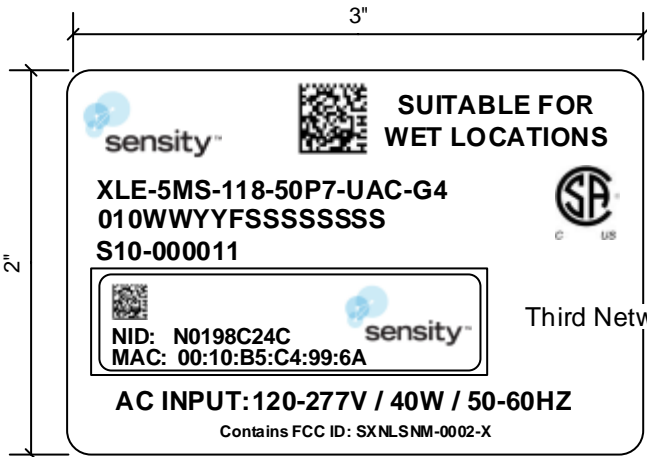


930-0046-00, Rev 02  
Company Confidential

Sensor Pod



Product Level



Third Network Identifier Label

