

**Exhibit C**

**Label Location  
DLP Design, Inc.  
RF1**



January 29, 2005

American Telecommunications Certification Body, Inc.  
6731 Whittier Avenue  
Suite C110  
McLean, VA 22101

To Whom It May Concern:

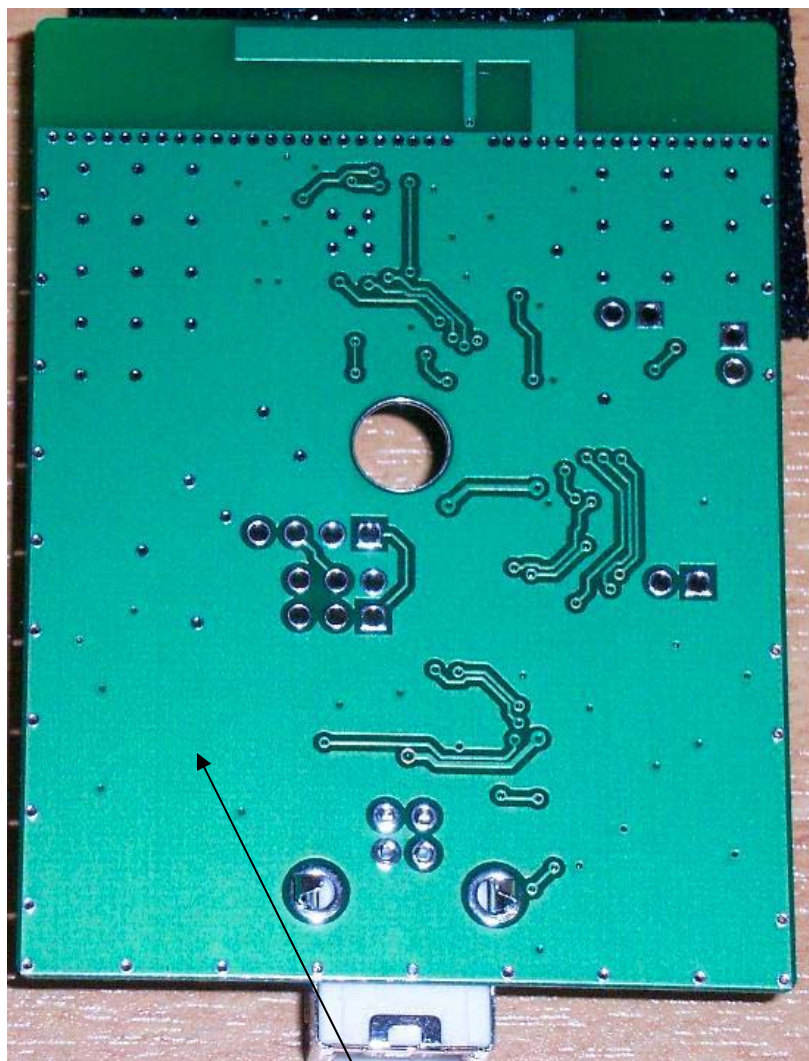
Both the DLP-RF1 and DLP-RF2 printed circuit boards will have labels that are indelibly printed on a polyester material with a pressure sensitive adhesive backing. Due to the small size of the printed circuit boards, the labels will be approximately 0.6 inches by 0.75 inches in size.

The labels will be adhered to the back of the printed circuit boards.

Thank you for your attention to this matter.

Sincerely,

Don L. Powrie  
President & CEO



DLP-RF1  
FCC ID: SX9000RF1  
IC: 5675A-000RF1

