



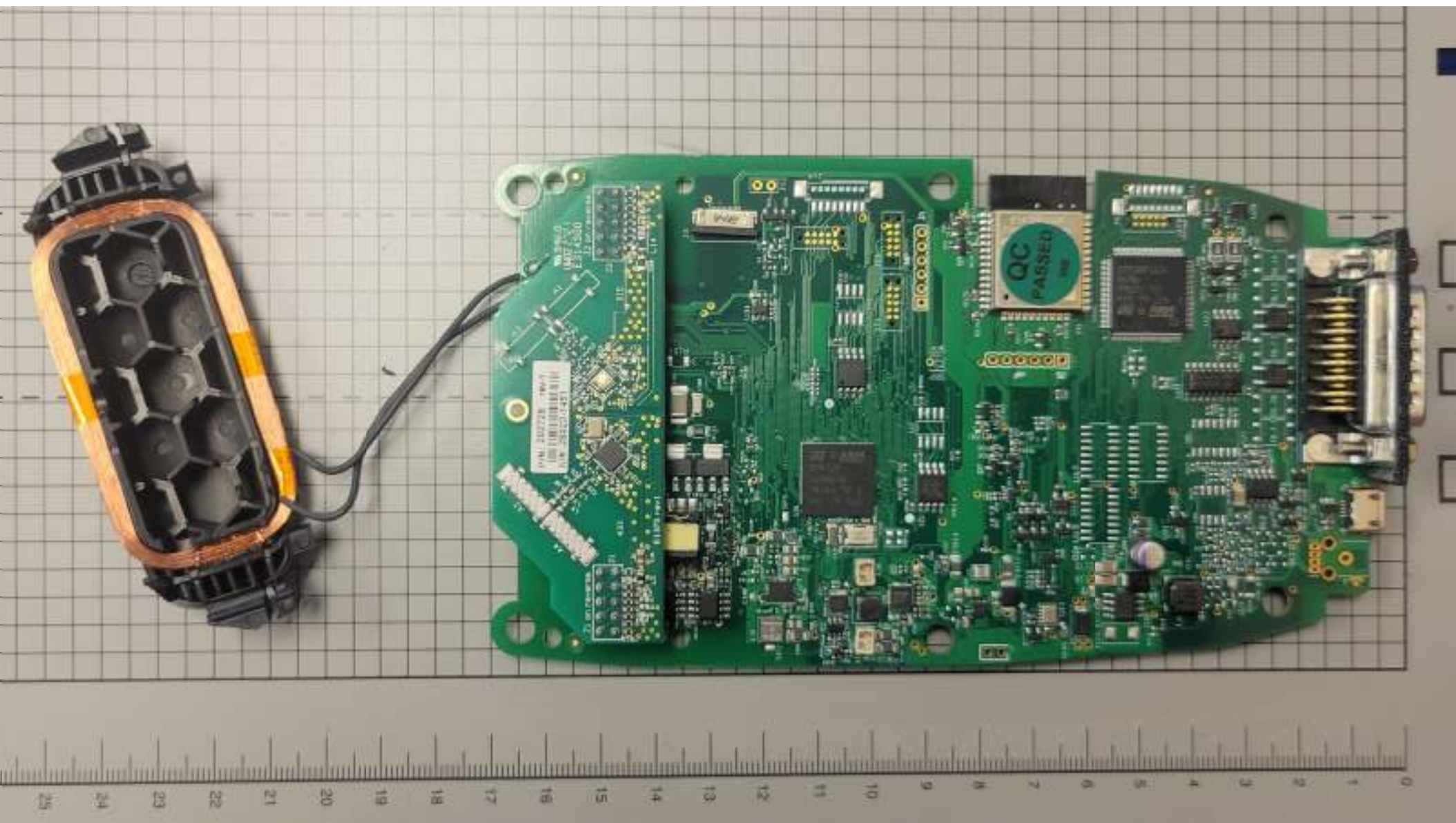


752
FCC
Test
Tool
of Mr. ZHANGXIN

MAXIM

schon
USER MANUAL

- 1.1
- 1.2
- 1.3
- 1.4
- 1.5
- 1.6
- 1.7
- 1.8
- 1.9
- 1.10
- 1.11
- 1.12
- 1.13
- 1.14
- 1.15
- 1.16
- 1.17
- 1.18
- 1.19
- 1.20
- 1.21
- 1.22
- 1.23
- 1.24
- 1.25
- 1.26
- 1.27
- 1.28
- 1.29
- 1.30
- 1.31
- 1.32
- 1.33
- 1.34
- 1.35
- 1.36
- 1.37
- 1.38
- 1.39
- 1.40
- 1.41
- 1.42
- 1.43
- 1.44
- 1.45
- 1.46
- 1.47
- 1.48
- 1.49
- 1.50
- 1.51
- 1.52
- 1.53
- 1.54
- 1.55
- 1.56
- 1.57
- 1.58
- 1.59
- 1.60
- 1.61
- 1.62
- 1.63
- 1.64
- 1.65
- 1.66
- 1.67
- 1.68
- 1.69
- 1.70
- 1.71
- 1.72
- 1.73
- 1.74
- 1.75
- 1.76
- 1.77
- 1.78
- 1.79
- 1.80
- 1.81
- 1.82
- 1.83
- 1.84
- 1.85
- 1.86
- 1.87
- 1.88
- 1.89
- 1.90
- 1.91
- 1.92
- 1.93
- 1.94
- 1.95
- 1.96
- 1.97
- 1.98
- 1.99
- 2.00



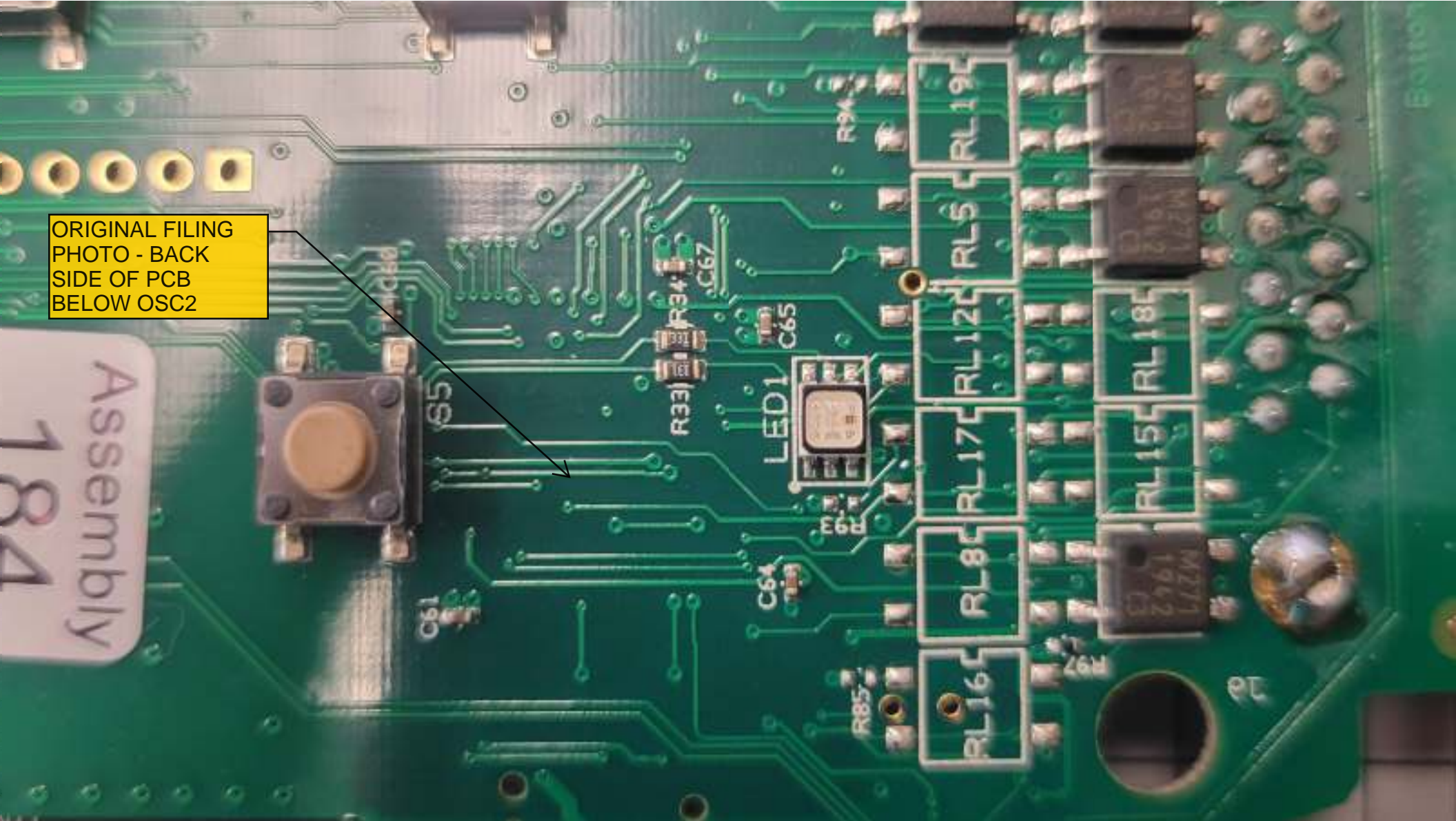
0 1 2 3 4 5 6 7 8 9 10 11 12 13 14 15 16 17 18 19 20 21 22 23 24 25



ORIGINAL FILING
PHOTO - XTAL
OSC1



ORIGINAL FILING
PHOTO - XTAL
OSC2



ORIGINAL FILING
PHOTO - BACK
SIDE OF PCB
BELOW OSC2

Assembly
184

Estimote



CLASS II - CHANGE
OF XTAL LOCATION
- MOVED TO
BOTTOM OF PCB



CLASS II - NEW
NON-RADIO XTAL
PAD LOCATION +
ASSOCIATED
COMPONENTS ON
BOTTOM OF PCB

