



HRT 500

USER GUIDE

Table of Contents

KNOWING YOUR DEVICE	3
DEVICE SPECIFICATION	5
BASIC INSTALLATIONS	6
THE BATTERY	6
GUIDELINE FOR INSTALLING SIM/SAM CARD	6
GUIDELINE FOR INSTALLING MICRO SD CARD	7
FIRST TIME USE	8
SCREEN CALIBRATION	8
TIME, DATE AND TIME ZONE CONFIGURATION	8
TOUCH SCREEN OPERATIONS	9
USING THE STYLUS	9
START MENU	10
SHELL TASKBAR	11
SOFTWARE INPUT PANEL (SIP)	12
KEYPAD	13
CUSTOMIZING HRT500	14
LCD BRIGHTNESS CONTROL	15
KEYPAD LIGHT CONTROL	17
POWER	18
DISPLAY	19
MOUSE	20
KEYBOARD	20

AUDIO VOLUME	21
STYLUS PROPERTIES	21
NETWORK & DIAL – UP CONNECTION	22
REGIONAL AND LANGUAGE SETTING	22
OWNER PROPERTIES	23
PC CONNECTION	23
STORAGE PROPERTIES	24
SYSTEM PROPERTIES	25
PASSWORD PROPERTIES	25
SCREEN ROTATION	26
TASKBAR & SECURE SHELL	26
INPUT SELECTION PANEL	27
DATE & TIME PROPERTIES	27
INTERNET OPTIONS	28
REMOVE PROGRAMS	28

INTERNET EXPLORER **29**

FEATURES **31**

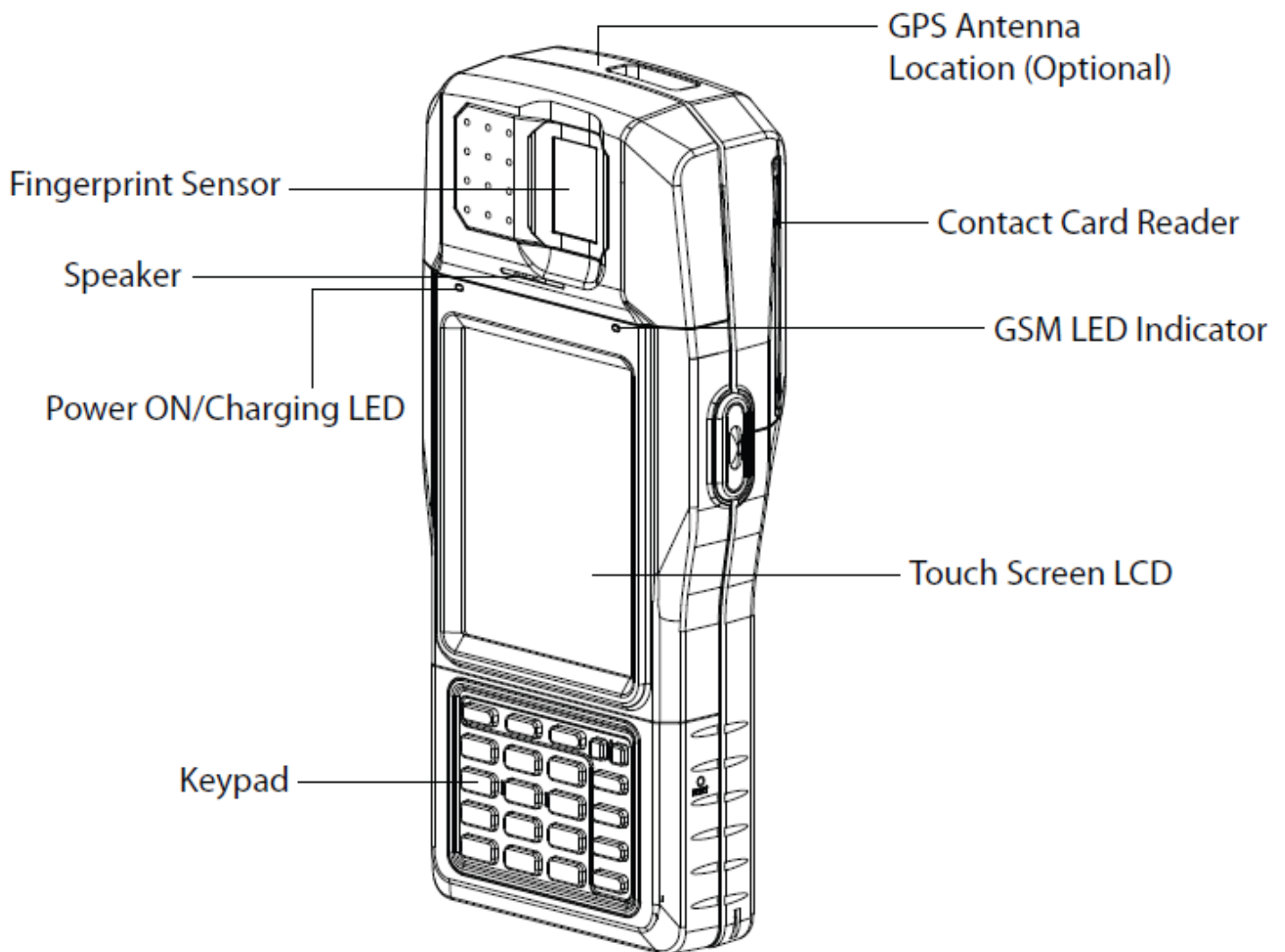
WIRELESS LAN (Wi-Fi) USAGE	31
BLUETOOTH USAGE	33
GSM USAGE	38
USING THE CONTACT CARD READER	41
USING THE CONTACTLESS READER (RFID)	41
USING THE FINGERPRINT SENSOR	42
USING THE BARCODE SCANNER	42

APPENDIX: TROUBLESHOOTING GUIDE **43**

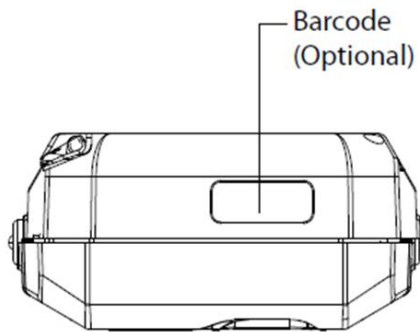
RESET THE HRT500 AND CLEAR MEMORY	43
IF HRT500 RUNS OUT OF POWER	44
IF HRT500 RUNS OUT OF MEMORY	45
INACCURATE RESPONSE TO STYLUS TAPS	46
ROUTINE MAINTENANCE	46
BATTERY GUIDELINES	47
TRAVEL GUIDELINES	47
SHIPPING GUIDELINES	48

Knowing Your Device

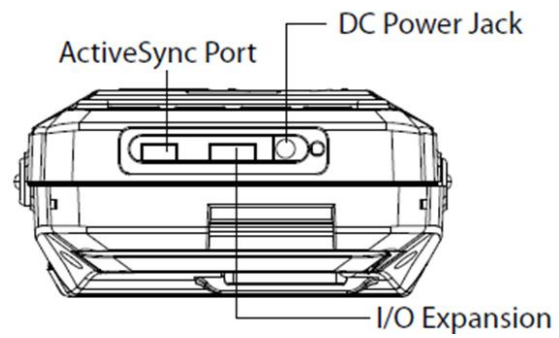
FRONT



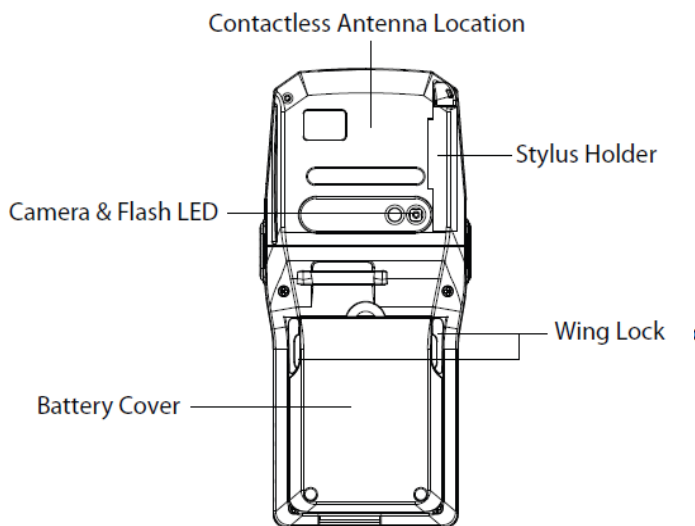
TOP



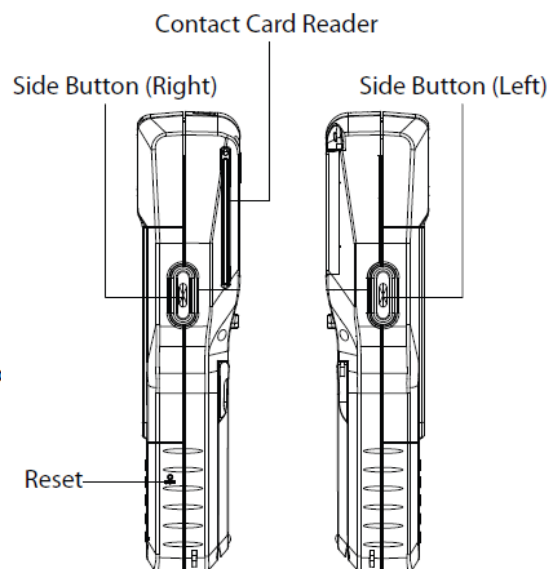
BOTTOM



REAR



SIDE



Device Specification

Systems

Memory	256MB DDR-2 RAM, 4GB Flash
Memory Expansion	1 x micro-SD Memory Slot (Support up to 32GB)
Device Operating System	WinCE 6.0
Host PC Operating System	Windows® 7/ Vista/ XP
Programming Language	C++ Programming, NET Programming in Microsoft® Visual Studio 2005

Communication Interfaces

Bluetooth	Bluetooth Version 2.0
Wireless LAN	IEEE 802.11 b/g Wi-Fi
Network	3.5G - W-CDMA, 850, 900, 2100 MHz
	GSM/ GPRS/ EDGE (1 X SIM Slot)
USB	USB Client 1.1 (ActiveSync)

Human Interfaces

Displays	3.5" (480x640) Transflective TFT Colour Touch Screen
Keypad	12 Alphanumeric Buttons, 3 Function Buttons and 1 Power On/Off Button
LED	1 x Power Status, 1 x Network Status, 1 x Charge status
Speaker	Built-in Mono Speaker

Power

Battery	7.4V 1800mAh Li-ion Battery
Operating Time	4 - 6 Hours

Mechanical

Dimension (LxWxH) mm	197 x 92 x 44
Weight	Approximately 600g

Environment

Operating Temperature	-10°C to +50°C
Storage Temperature	-20°C to +60°C
IP Rating (Water & Dust Protection)	IP65
Drop Test	1.5m

Fingerprint Sensor

Sensor	Optical sensor
Resolution	500dpi
Active Area (mm)	14 x 22
Supported Template	Sagem Algorithm
Template Formats	Morpho Proprietary, ISO 19794-2, ANSI/ INCITS 378, RAW/Bitmap, WSQ (Optional)

Contact Card Reader

Standard	ISO/IEC 7816 Part 1, 2, 3, (T=0, T=1)
Card Slot	1 x ID-1 Card Slot
	3 x ID-0 SAM Slots
Communication Speed	9.6 kbps up to 115.2kbps
Card Type	Class A & B

Contactless Reader

Standard	ISO/IEC 14443 A/B Part 1, 2, 3, 4
Card Type	MiFARE Classic / Ultralight / Ultralight C /Desfire / MiFARE Plus / Sony Felica / HID i-class
Card Transmission Rate	Up to 848 kbps (Card Type Dependant)

Camera

Resolution	5 Megapixels (LED Flash)
------------	--------------------------

Basic Installations

The Battery

The battery has been partially charged at the factory, however please charge it for 4 hours before switching on the device for the first time.

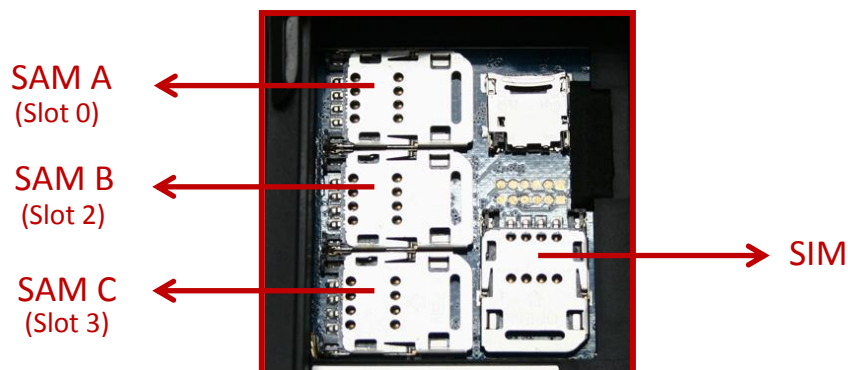
Guideline for Installing SIM/SAM card

WARNING

- *Keep all SIM cards out of the reach of children.*
- *The SIM card and its contacts can be easily damaged by scratches or bending.*
- *Be careful when handling, inserting or removing the card.*
- *Before installing the SIM card, always make sure that the device is fully charged as the application will not work properly with insufficient amount of power.*

To insert SIM card

- 1) Close all programs and switch off the device.
- 2) Remove the hand strap.
- 3) Unlock both wing lock.
- 4) Remove the Battery cover.
- 5) Remove the Battery pack.
- 6) Unlock the SIM Slot and pull back the cover for insertion.
- 7) Ensure that the cut corner faces top right and the gold contacts of the card is facing downwards into the device.



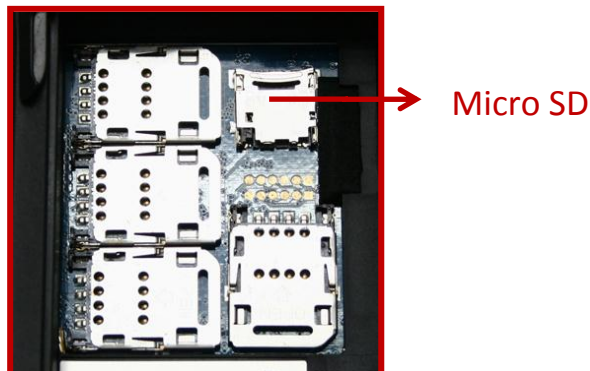
- 8) Push down the SIM slot cover and slide outward to lock it.
- 9) Place the battery back followed by battery cover.
- 10) Push the wing lock to secure the battery cover and finally install the hand strap back into the hand strap tab.

To insert SAM card

- 1) Insert the SAM cards into slot 0, 2, 3.
- 2) Insertion steps are the same as SIM card insertion steps.
- 3) SAM card is for internal security.

Guideline For Installing Micro SD Card

- 1) Close all the programs and switch off the device.
- 2) Remove the hand strap.
- 3) Unlock both wing lock.
- 4) Remove the battery cover.
- 5) Remove the battery pack.
- 6) Unlock the Micro SD slot and pull back the cover until easy for insertion.
- 7) When inserting the Micro SD card, ensure that the gold contacts of the card is facing downwards into the device



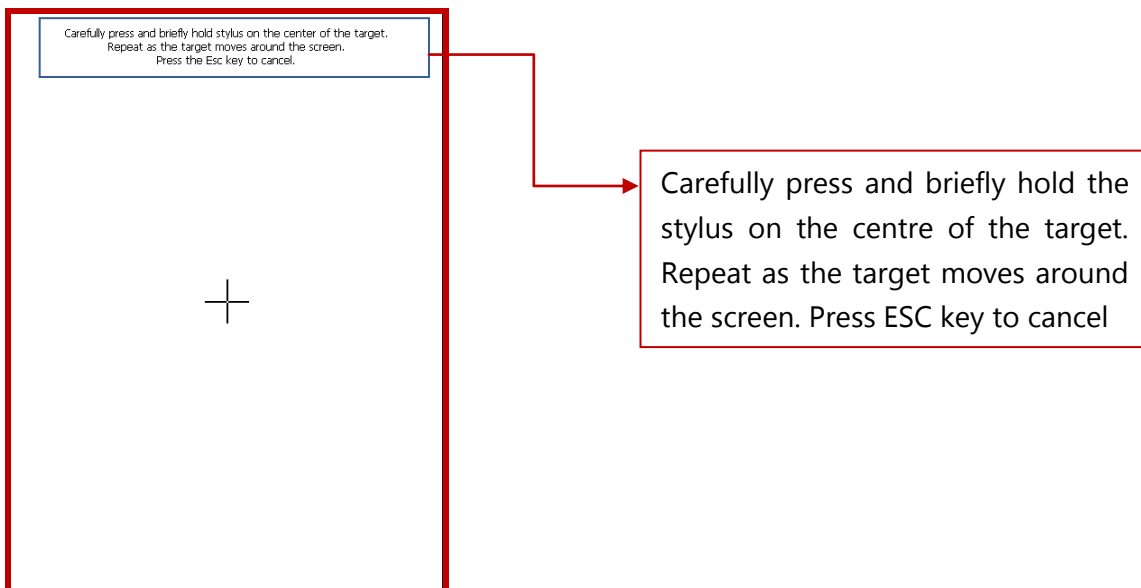
- 8) Push the Micro SD slot cover down and slide inward to lock it.
- 9) Place the battery back followed by battery cover.
- 10) Push the wing lock to secure the battery cover and finally install the hand strap back into the hand strap tab.

First Time Use

Screen Calibration

Once the charging has completed, turn on the device by pressing the power button. On the first time basis, it is advisable to calibrate the screen by going to:

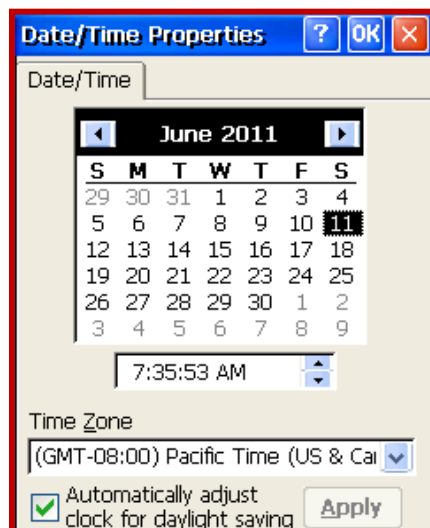
Start -> Settings -> Control Panel -> Stylus.



Follow the cursor and tap on it. Kindly set the Time, Date and Time Zone as the default time, date and time zone differ from place to place.

Time, Date and Time Zone configuration

Go to **Start -> Settings -> Control Panel -> Date/Time** to set the Time, Date and Time Zone.



Touch Screen Operations

The following defines the various operations that the user can perform with the stylus.

Tap	Tap once to select a program
Double Tap	Tap the item twice to open or execute a program
Drag	Hold the stylus on the screen to drag objects

Using the Stylus

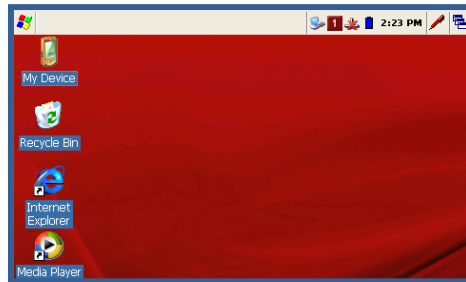
The stylus is housed inside the stylus holder at the right corner of the device.

IMPORTANT

- *Avoid misplacing the stylus by always storing it in the stylus holder when not in use.*
- *Avoid breaking the tip of the stylus.*
- *Use only the stylus that comes with the HRT500 or some other stylus type instrument with a soft, blunt point to perform touch screen operations. Never use a pen, pencil, or other sharp writing element.*

Start Menu

The HRT500 is pre-installed with a collection of useful programs such as Microsoft WordPad and other customized programs. Tap the "START" button to explore the list of programs available for selection.



Taskbar Items

The following are the standard status icons that will appear on the taskbar.

Status Icon



Meaning

Start Menu, Tap to switch to a program



Indicate device connected to PC ActiveSync



Battery is charging



Battery is fully charged



Battery is low



Tap for display or hide keyboard, tap and hold to choose other input method



Quick launch menu



Current Keypad Input method

Shell taskbar

The taskbar appears on the top of HRT500's screen.



1	Start button	Single tap to display the Start menu
2	Active application	Display the latest application running
3	Left arrow	Single tap to see the hidden icon on the left
4	Direct Connection	Double tap to execute the direct network status dialog
5	WI-FI Connection	Double tap to execute the WI-FI network setting
6	Keypad Input Method	Single press on the 'ALPHA' to change mode of input by keypad <i>Numerical (1) , Small Alphabet (a) , Capital Alphabet(A)</i>
7	Bluetooth Network	Single tap to execute Bluetooth network setting
8	Power icon	Single tap to display the power status on user's HRT500
9	Right	Single tap to see the hidden icon on the left
10	Time , Date and Time Zone	Single tap to display the time, date and time zone menu
11	Software Input Panel (SIP)	Single tap to display or hide the Keypad
12	Application switching	Single tap to display all the active application

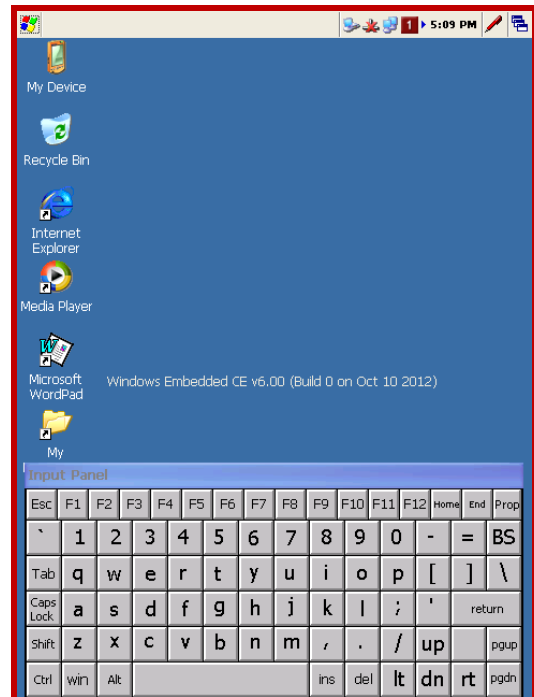
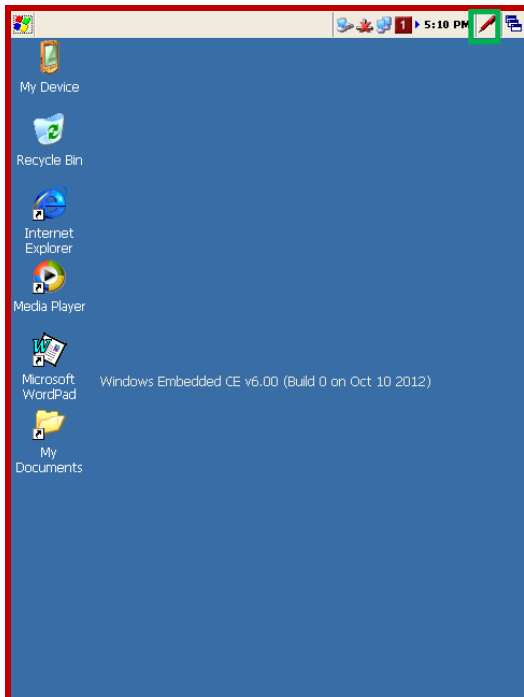
NOTE:

- An internal battery icon appears in the status icon. See Taskbar Item for more information about icons.
- Messages also appear on the screen to warn user when the battery power is critically low.

User can check the current battery level at any time by tapping **Start -> Settings -> Control Panel -> Power** to display Power Properties.

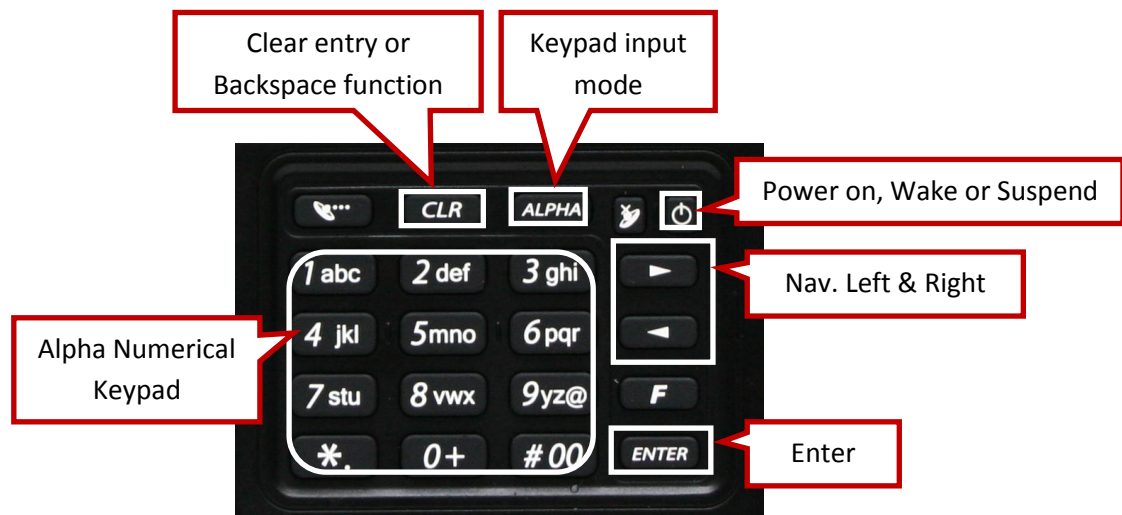
Software Input Panel (SIP)

Tap the SIP icon on the taskbar as shown below to use the input panel. Tap on the SIP icon again, to hide the input panel.



Keypad

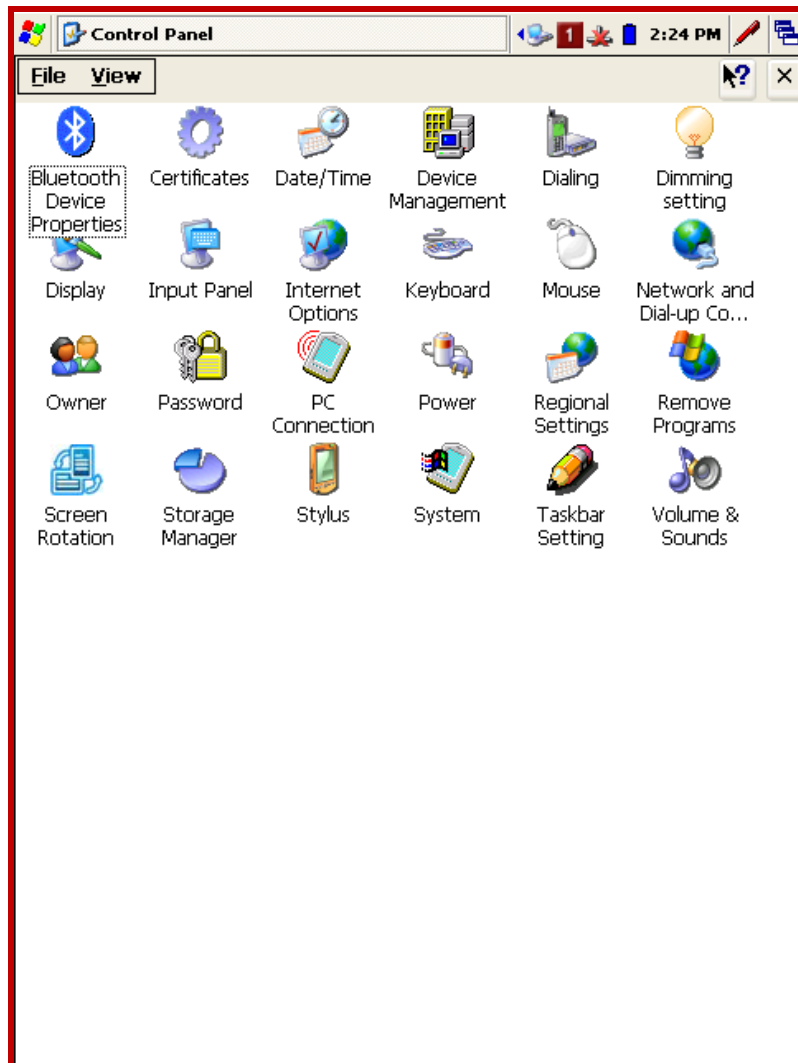
Controls and Interfaces



- **Nav. Left & Right**
Navigate to left or right.
- **Enter button**
To open a selected program.
- **Power button**
To turn on/off the device.
- **CLR**
To clear entry or use as backspace function.
- **Alpha numerical keypad**
To key in preferred character or command.
- **Alpha button**
To change the mode of entering characters by keypad. Sequences of the modes are numerical characters, lower-case alphabets then upper-case alphabets.

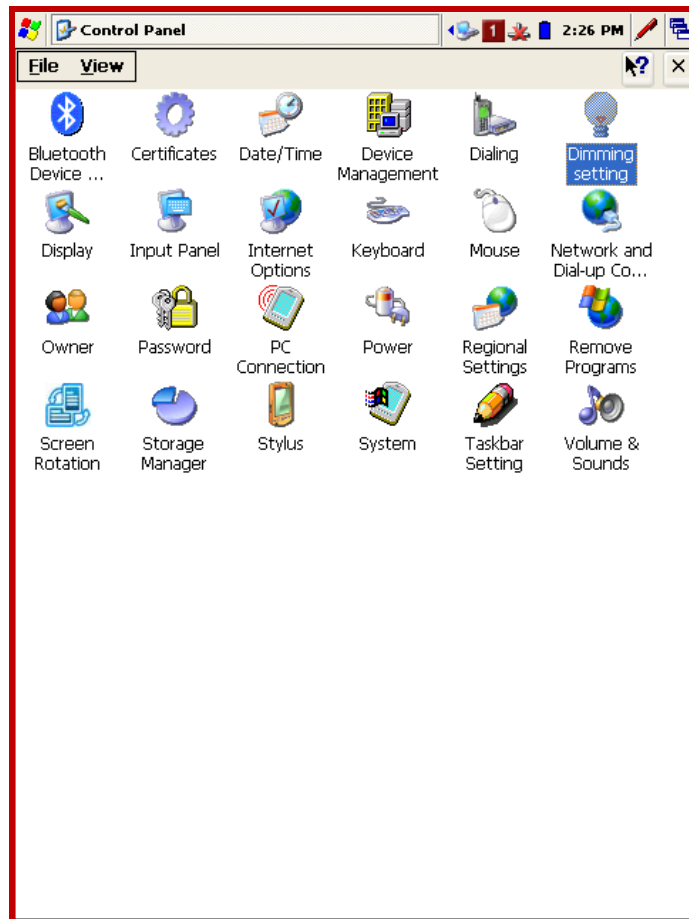
Customizing HRT500

The setting of HRT500 can be customized to suit the user's specific requirements. For e.g. setting password to protect the device's information, LCD Brightness and many more.



Tap on **Start** -> **Settings** -> **Control Panel**, to view the menu as shown in the figure above.

LCD Brightness Control



Adjusting Display Brightness

Use the following operations to adjust the display brightness.

 -> **Settings -> Control Panel -> Dimming Setting**

A screen box will appear. Make sure it is on the **LCD Light** tab. Tap the **dark** or **bright** tab to control the brightness of the screen.

Adjust how the Screen Light can be Turned On

Use the following operations to adjust the display brightness.

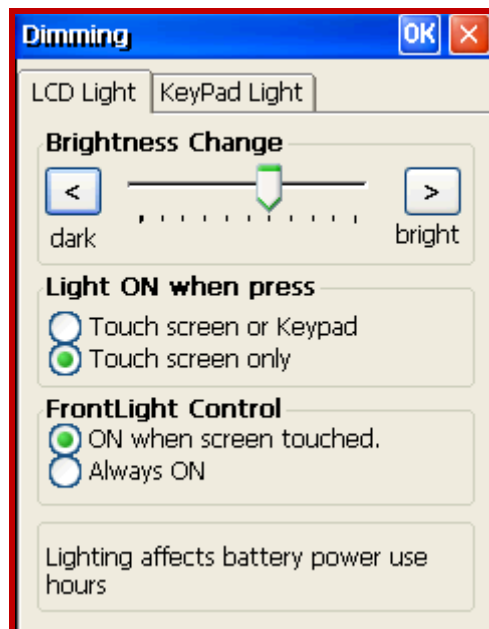
 -> **Settings -> Control Panel -> Dimming Setting**

Select the **LCD Light** tab. There are two options available to turn on the screen light.

Touch screen or Keypad - to turn on the light of the LCD by touching either the Touch Screen or Keypad,

Touch screen only - to turn on the light of the LCD by touching either the Touch Screen only.

For the **FrontLight Control**, there are two options available as the figure shown below.



ON when screen touched – The front light turns on only when the screen is touched

Always ON – The front light is always on

Keypad Light Control

Light Emitting Duration

Use the following operations to adjust the display brightness.

 -> **Settings** -> **Control Panel** -> **Dimming Setting**

Select the **KeyPad Light** tab. Kindly set the duration for keypad light to hibernate (3 seconds to 30 seconds)

Keypad Light

Use the following operations to adjust the display brightness.

 -> **Settings** -> **Control Panel** -> **Dimming Setting**

Touch screen or Keypad - To turn on the light of keypad by touching the screen or pressing the keypad

Keypad only - To turn on the light by pressing any key in the keypad.

Keypad Light Control

Use the following operations to adjust the display brightness.

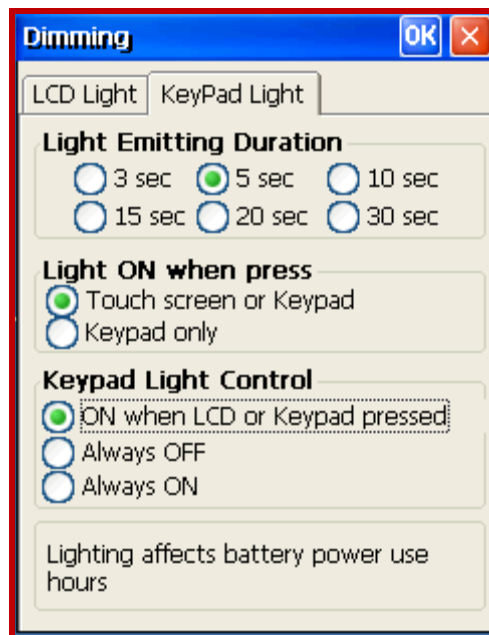
 -> **Settings** -> **Control Panel** -> **Dimming Setting**

Select **ON when LCD or Keypad pressed** to enable the previous option. Select **Always OFF**, the keypad light will be turned off the completely and select **Always ON**, the keypad light will be turned on all the time until the device is suspended.

ON when LCD or Keypad pressed - To turn on the light of keypad by touching the screen or pressing the keypad

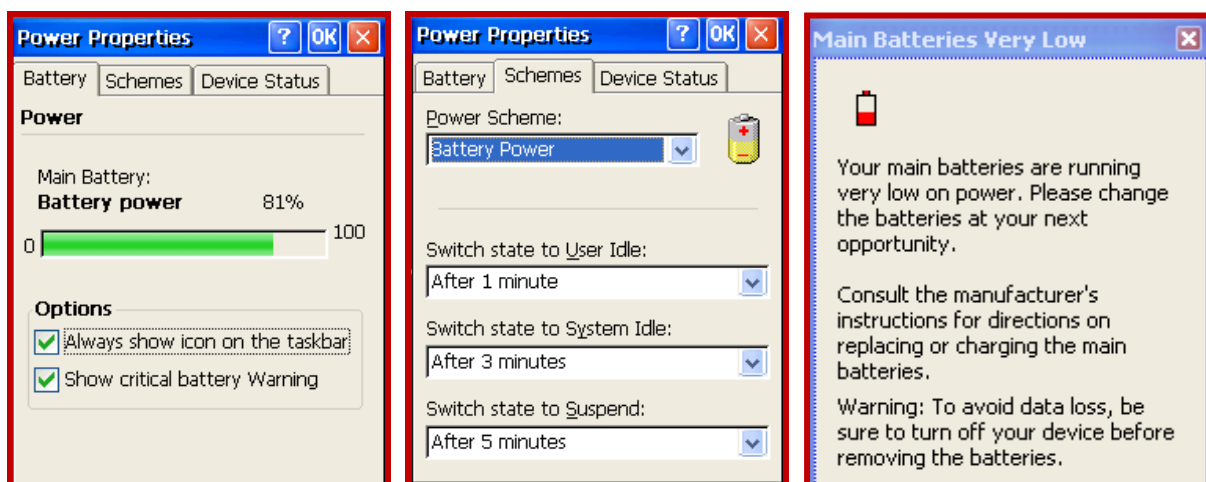
Always OFF – To turn off the keypad light completely

Always ON – To turn on the keypad light permanently



Power

User can check the power status of the main battery by clicking on the power properties icon in the control panel. In the power properties menu, in the **Battery** tab, user can select their preferred option; **Always show icon on the taskbar** or **Show critical battery Warning**, which means a window, will pop out when the battery is low.



System Power States

The OS (Operating System) has **4 different power states** as for the internal power manager state machine. The state transition reflects on the system conditions as stated below:

- a) User activities
- b) System activities
- c) Application requests
- d) Timers

The four states are:

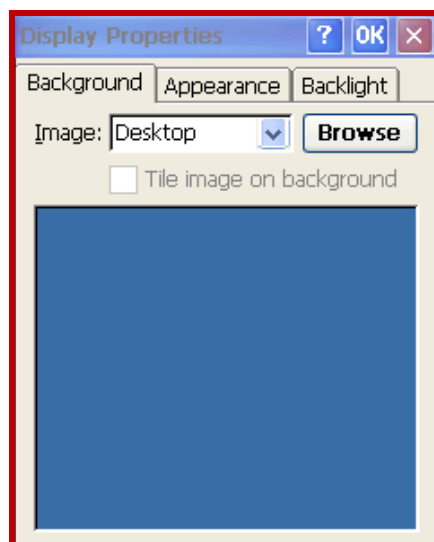
- **On** - In this state, the device is active and user can use all the different peripherals, and consequently the battery consumption is on maximum level.
- **User Idle** - When the user is not using the device actively, the display backlight intensity will decrease and the unused peripherals will be disabled to reduce power consumption.
- **System Idle** - When the system is inactive, the power manager switches to this state.
- **Suspend** - In this state, the device will consume minimal power. Therefore, the device can't be used. The processor clock will be weak and the peripherals will be turned off automatically.

The transition from **On** to **User Idle** and **User Idle** to **Suspend** is done once the timer expires. The timer value can be set through the power applet in the control panel.

Display

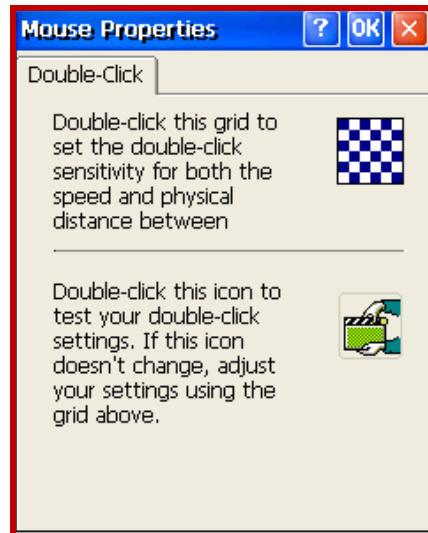
The resolution for the device is 640x480 (what

To customize the display screen, go to **Start -> Settings -> Control Panel -> Display Properties**.



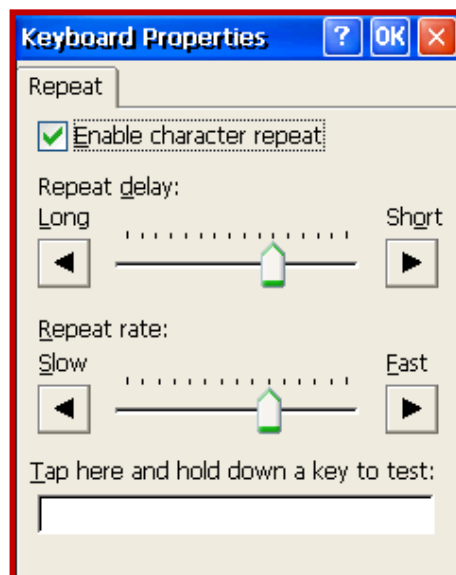
Mouse

In the "**Mouse Properties**", user can set and test the sensitivity and speed of their mouse for better usage.



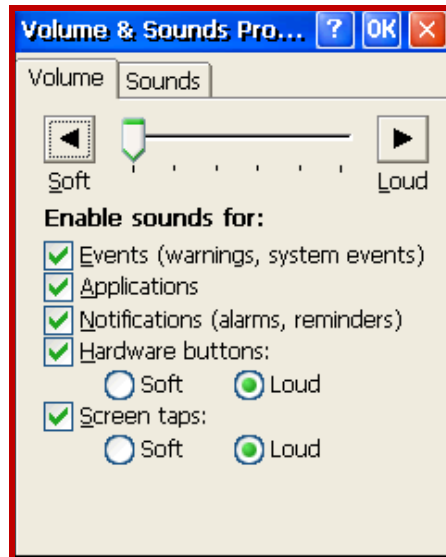
Keyboard

In the "**Keyboard Properties**", user can customize the repeat delay, repeat rate and character repeat.



Audio Volume

User can set the speaker volume and enable sounds for warning, application and notification in the "**Volume and Sounds Properties**", while customizing the volume on the **volume** tab.



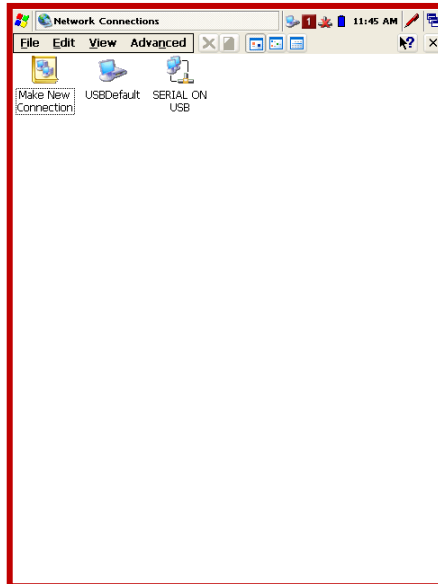
Stylus Properties

User can recalibrate the sensitivity of the stylus as well as checking on the mouse double-tap setting under "**Stylus Properties**".



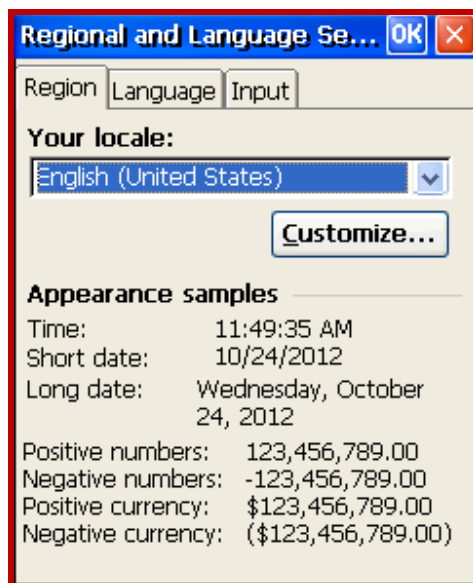
Network & Dial – Up Connection

When tapping at the “**Network and Dial-up Connection**”, a default connection will be created as “USB ActiveSync”. User can also view the entire network their handheld is connected to under this setting.



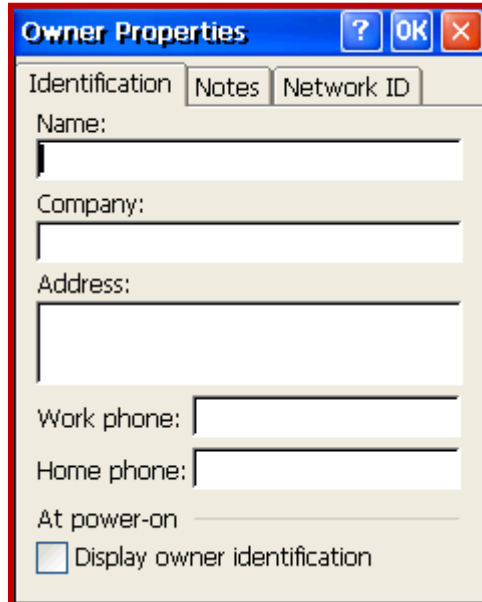
Regional And Language Setting

Set the local language, number, current time and date accordingly under “**Regional and Language Setting**”



Owner Properties

Depending on User's preferences, personal information and network ID can be inserted under "**Owner Properties**".



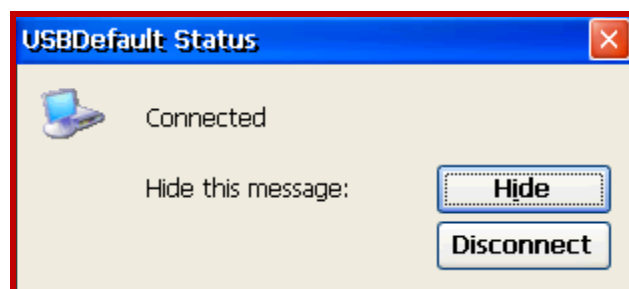
The "Owner Properties" dialog box has three tabs: "Identification", "Notes", and "Network ID". The "Identification" tab is active. It contains the following fields:

- Name: [Text box]
- Company: [Text box]
- Address: [Text box]
- Work phone: [Text box]
- Home phone: [Text box]
- At power-on: [Text box]
- ☐ Display owner identification

PC Connection

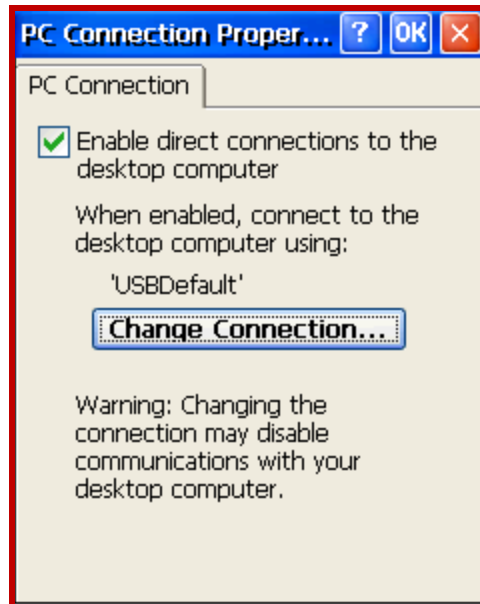
PC Connection is to enable the device to communicate directly with personal computer or other communication devices. The default is set to USB ActiveSync. However, if there is more than one connection being created on the "Network and Dial-Up Connection", user needs to change the connection settings before linking any other communication devices. To check the status of PC connection, go to

Start -> Settings -> Control Panel -> Network and Dial-up Connection -> USB Default.



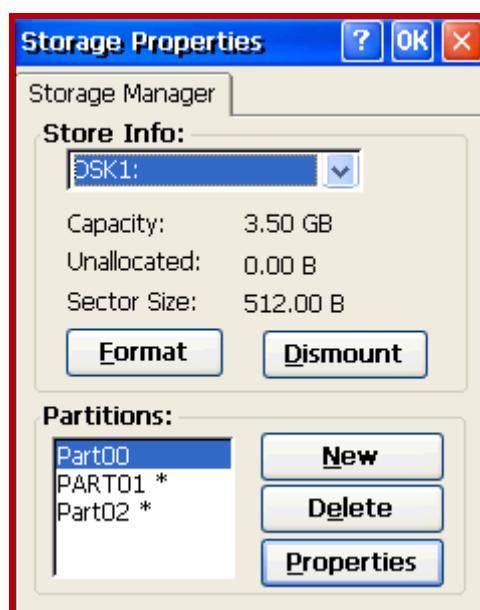
For PC Connection Properties, go to

Start -> Settings -> Control Panel -> PC Connection.



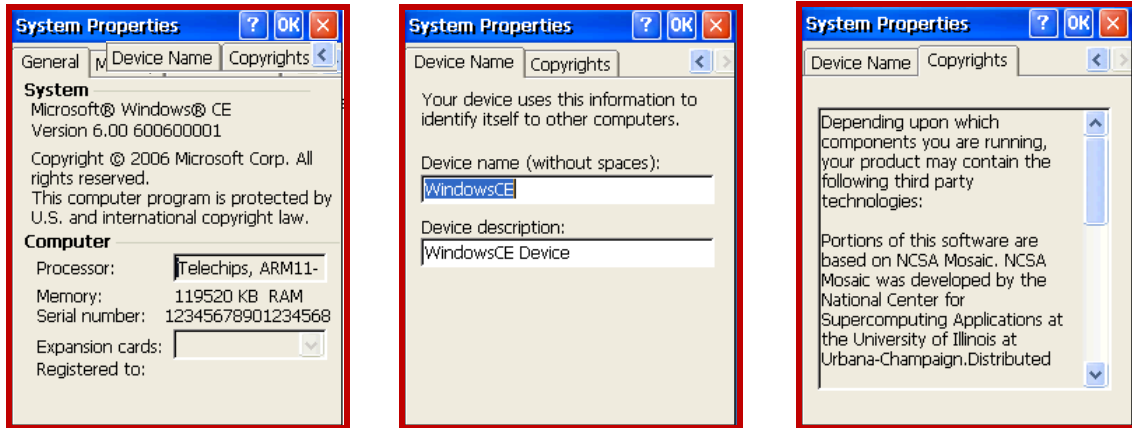
Storage Properties

Go to **Start -> Settings -> Control Panel -> Storage Manager**. In the **Storage Properties**, user can manage the storage by formatting, dismounting or creating a new partition on it.



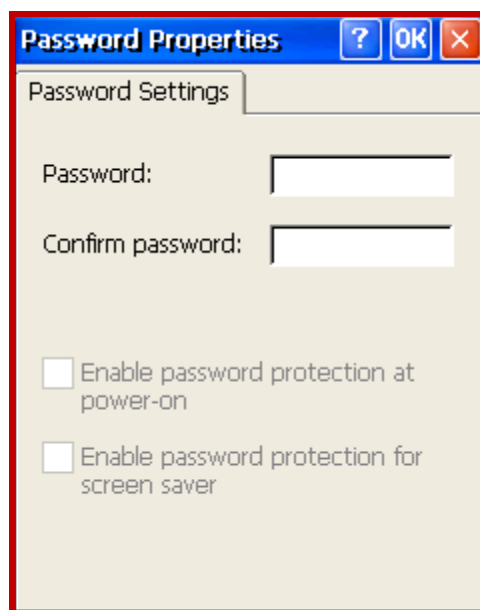
System Properties

User can view the system information, device name and copyrights information under “**System Properties**”.



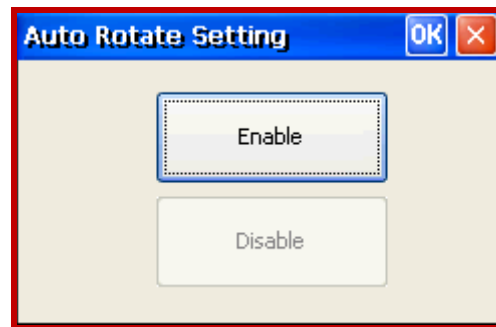
Password Properties

In the “**Password Properties**”, user can set the Password to maintain privacy or prevent others from accessing the device.



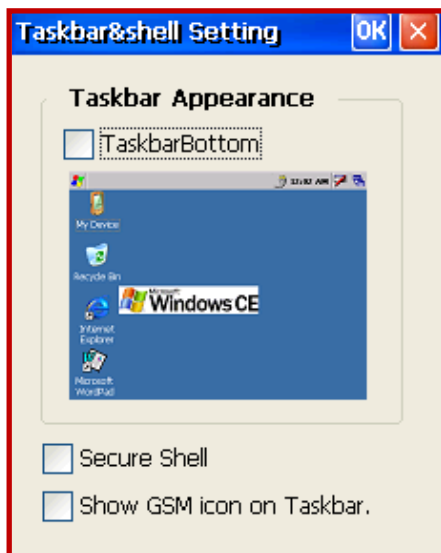
Screen Rotation

This feature allows user to enable the auto rotation setting.



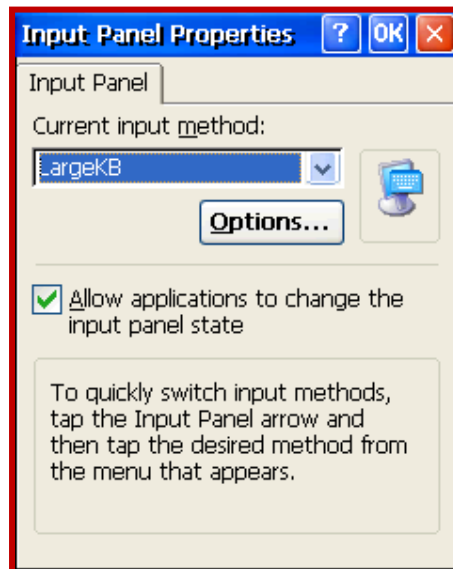
Taskbar & Secure Shell

Secure Shell enables user to control the accessibility of Control Panel. The default password is "123456".



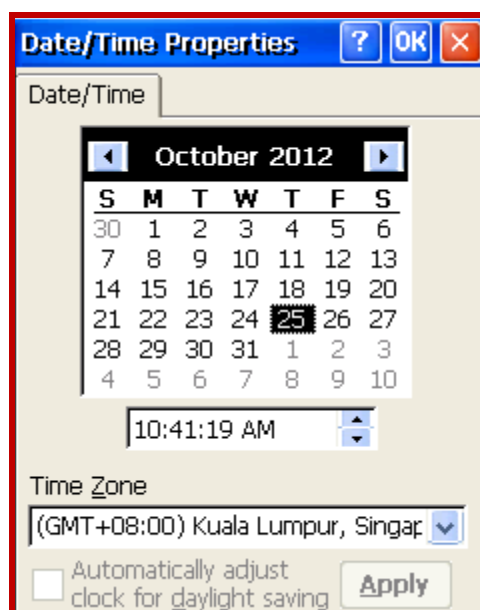
Input Selection Panel

In the **"Input Selection Panel"**, user can change the current state of Input Panel by tapping once on the SIP at the taskbar.



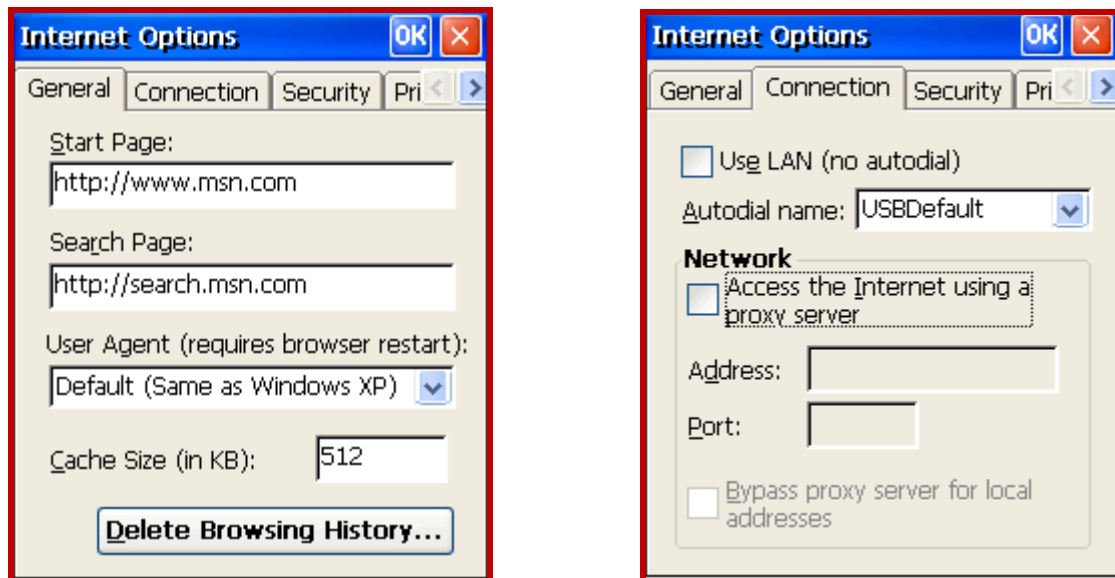
Date & Time Properties

Allow user to configure the date, time and time zone. It also comes with the daylight saving feature.



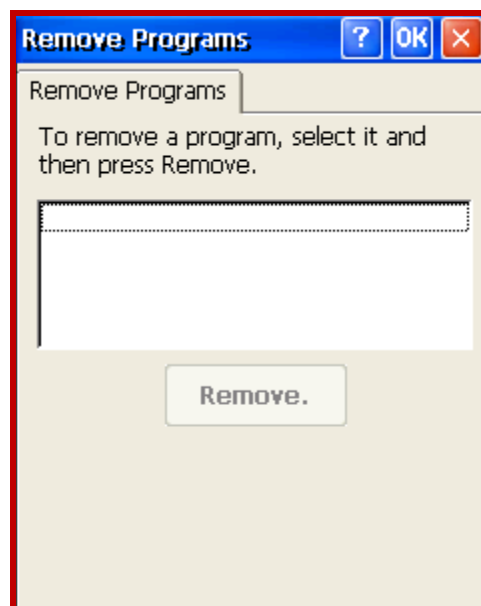
Internet Options

Allow user to configure the network connection setting and the default homepage.



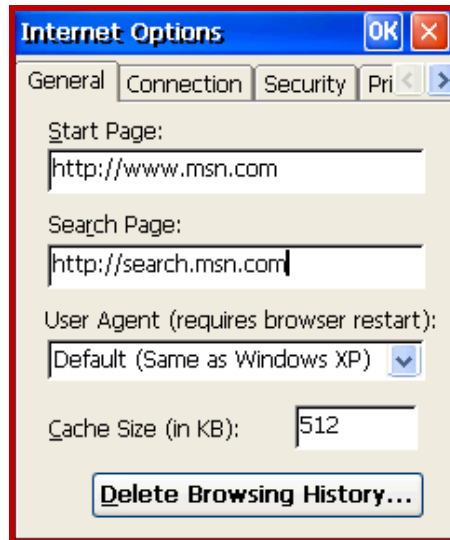
Remove Programs

Allow user to remove any unwanted installed programs.



Internet Explorer

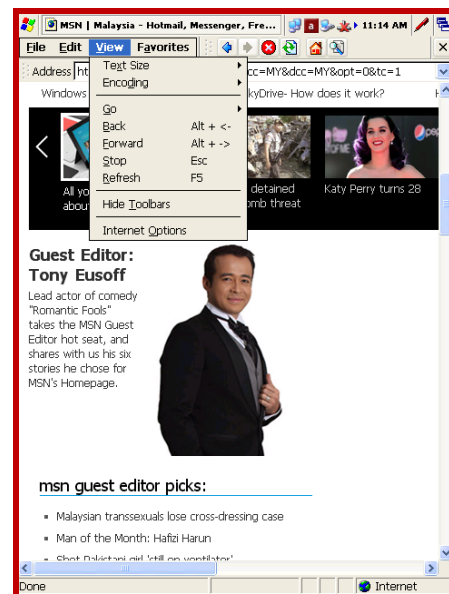
Internet Explorer makes it easier to get the most from the World Wide Web, whether to search for new information or browsing through websites.



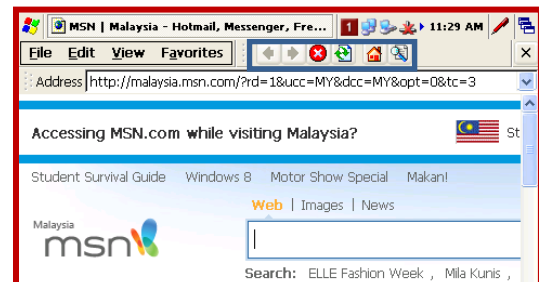
In the control panel menu, under the internet option, user may customize the appearance of the browser when the program is launched.



The start page of Internet Explorer.



The View menu allows user the option of limiting the taskbar to be shown and font size.



User could also go to a webpage, by typing the internet address – for example, ***www.pradotec-global.com***, in the address bar and then click the **Go** button. The **Back** and **Forward** buttons will enable user to return to the previous page or view the next page.

The **Stop** button will enable user to stop viewing a page when the webpage is taking too long to open. When receiving a message that a web page cannot be displayed or to make sure user has the latest version of the page, click the **refresh** button.

On the Favourite menu, user may store and organize webpages that are used frequently. User may also synchronize the list of favourite links in HRT500 with another desktop computer where changes can be made to either one. For more information on synchronization, refer to ActiveSync Help on desktop computer.

Features

Getting Connected

All the features and peripherals of HRT500 can be accessed and enabled by getting into the Power Control screen. The following pathway would lead the user to the Power Control screen.

Start -> Settings -> Control Panel -> Power Control

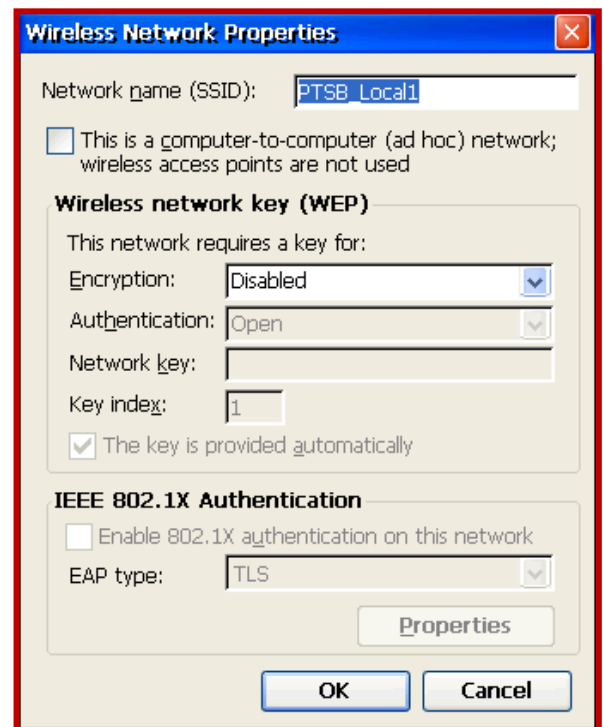
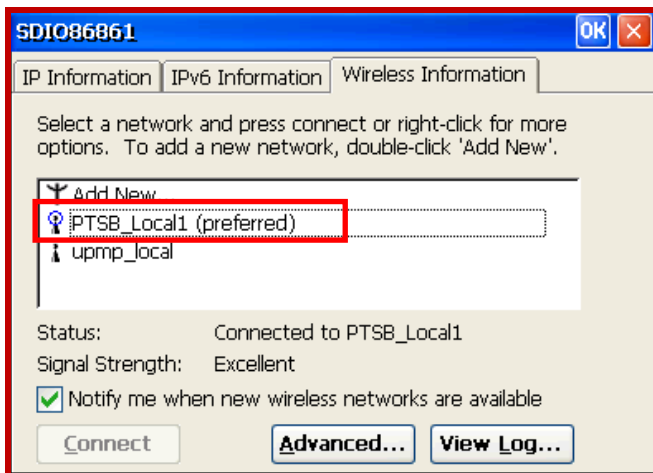
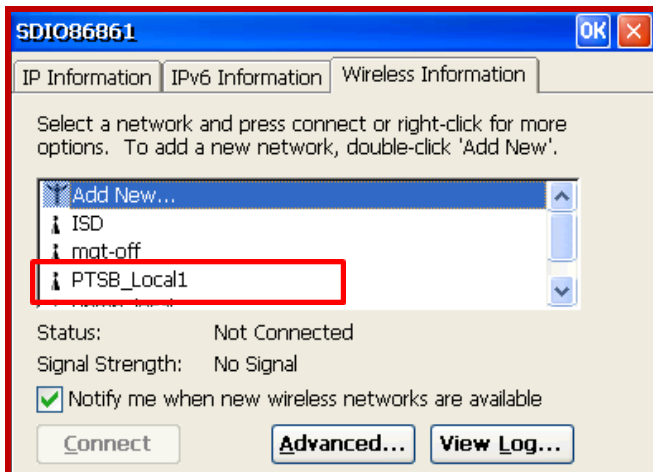
Wireless LAN (Wi-Fi) Usage

HRT500 is equipped with built-in wireless LAN that enables user to access Internet through available wireless networks.

To turn ON the wireless LAN, go to Power Control screen as shown below and tap once on the WiFi icon. The icon should be in green when it is turned **ON**.



The network icon will pop up on the shell taskbar. Double tap on the icon to configure the WiFi network properties. On the **Wireless Information** tab, check on the **Notify me when new wireless networks are available**. Select the preferred network, press **Connect** and a **Wireless Network Properties** window will pop out. Enter the Network key if needed, else press OK.



Bluetooth Usage

Bluetooth Manager allows user to scan, pair and link with other Bluetooth devices. The Bluetooth feature of the device must be turned ON in order to do the scanning. For the steps on turning ON the Bluetooth feature, please refer to the manual below.

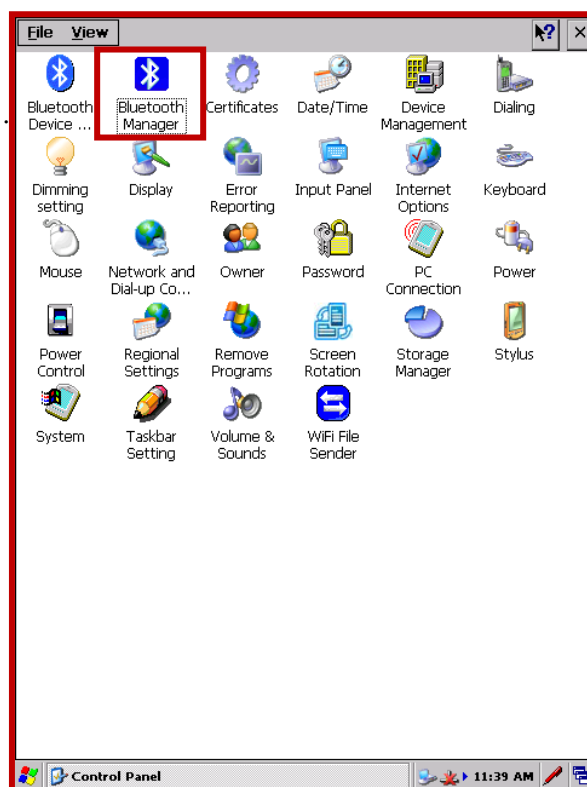
To access Bluetooth function, go to **Start -> Settings -> Control Panel -> Power Control** and press once on the **Bluetooth icon** to activate it. If the icon is green, it is turned ON and if the icon is red it is OFF or inactive.



User may scan and pair with other Bluetooth devices such as mobile phones, PCs, laptops and other Bluetooth enable device


In order to connect to another device, user needs to run a scan for the device. The following are the steps to establish a Bluetooth connection successfully.

- 1) Go to **Start -> Settings -> Control Panel -> Bluetooth Manager**. Double tap on the Bluetooth Manager icon.

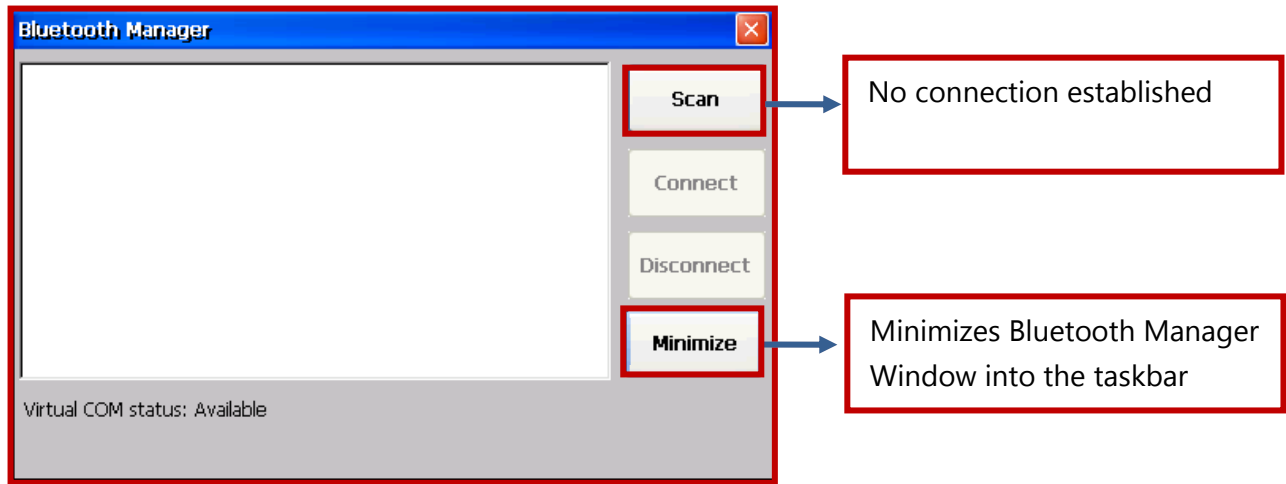


- 2) An icon will appear at the taskbar.

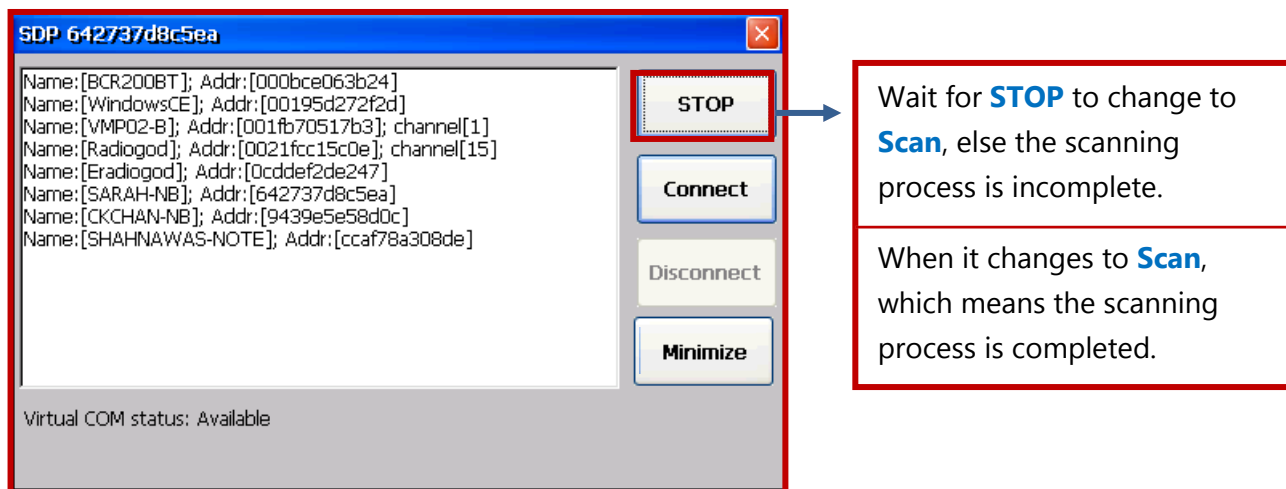


- 3) Single tap on the icon,  to continue

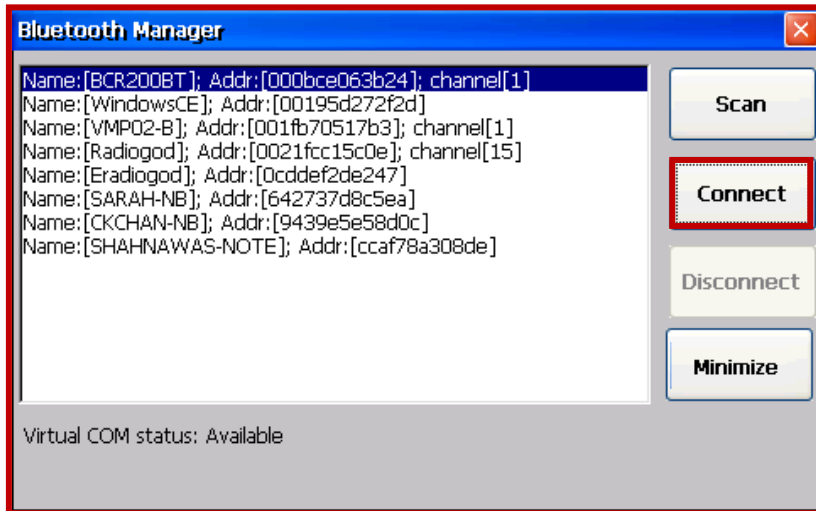
- 4) The Bluetooth Manager window will appear as below.



- 5) Make sure the Bluetooth pairing device is within the coverage range. Tap **Scan** to start scanning.
- 6) Tap **STOP** to stop the device from scanning.



- 7) Select the device that wish to be connected and tap **Connect**

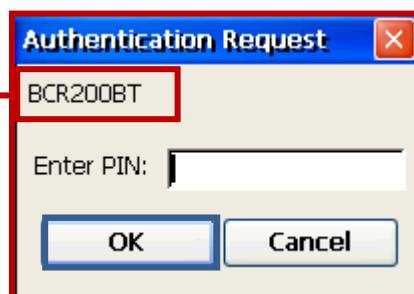


- 8) A Print UI window will pop up if the channel is not stated. Insert channel between 1 to 30, channels below 1 or above 30 are bad channels. Then press **OK**.



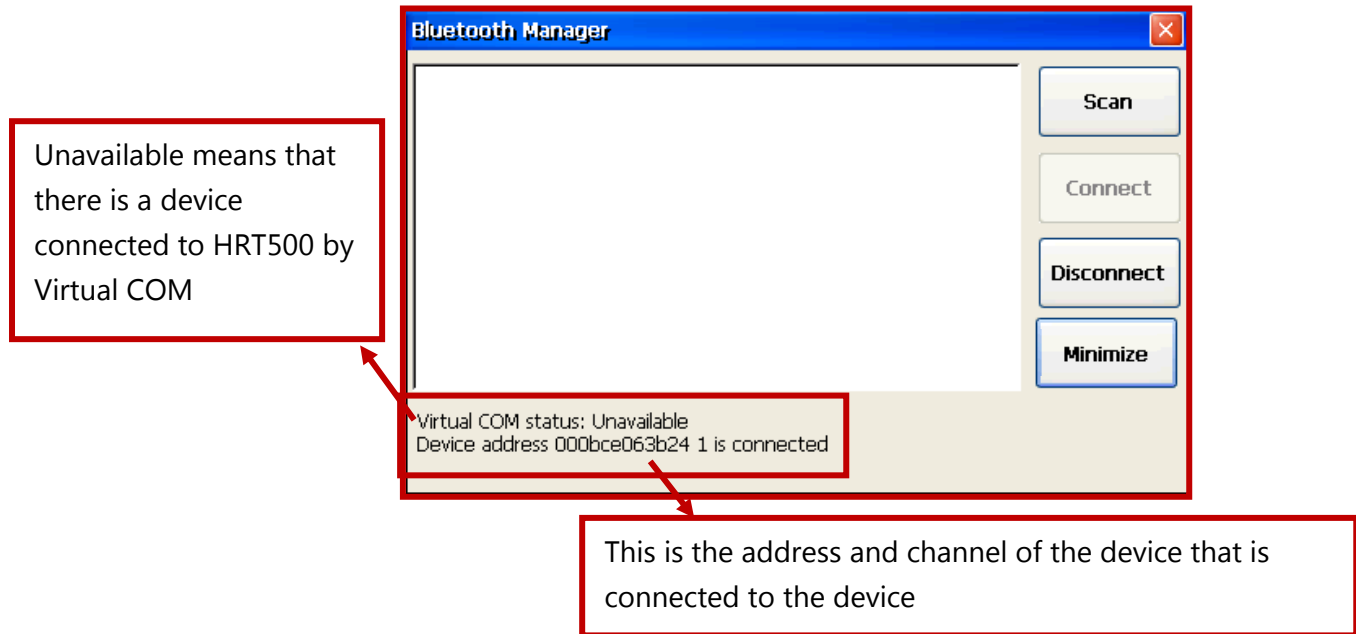
Channel between 1 to 30


- 9) An Authentication Request window will pop up. Enter the same PIN for both devices. Once the device is successfully connected, a window will pop up. Tap **OK** to complete the connection.

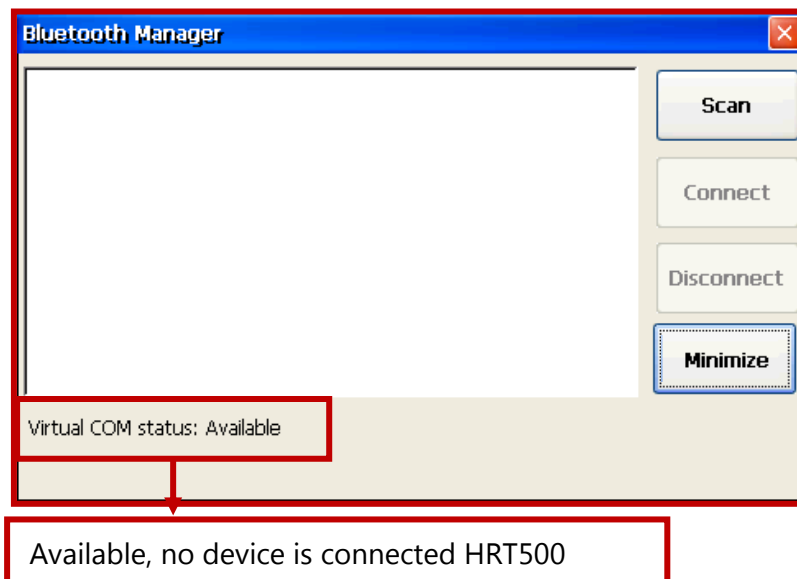


Name of the pairing device


10) Click once on the **Bluetooth Manager** icon,  to check on the connection.



11) Click once on the **Bluetooth Manager** icon,  to reopen the dialog. A device is connected to HRT500 by Virtual COM. In order to connect with other device, HRT500 needs to be disconnected by pressing "**Disconnect**".



12) Please make sure that the **Bluetooth Manager** icon remains at the taskbar. If the icon disappears, launch the program again. There are few scenarios that the taskbar icon may disappear:

- **Close** button,  is pressed. This will cause the entire application to close
- **Soft reset** button is pressed. All the running application will end.

13) If the device is suspended, make sure the **Bluetooth feature** is turned ON again.



14) By tapping soft reset, all the applications will end. Make sure the **Bluetooth feature** is turned ON again. It will then connect to the last connected device prior to the soft-reset provided it is not disconnected.

15) The connection will remain active until the device is disconnected or is being hard-reset, which is **Restore to factory setting**.

GSM Usage

To access GSM, go to **Start -> Settings -> Control Panel -> Power Control** and tap once on the GSM icon to activate it.

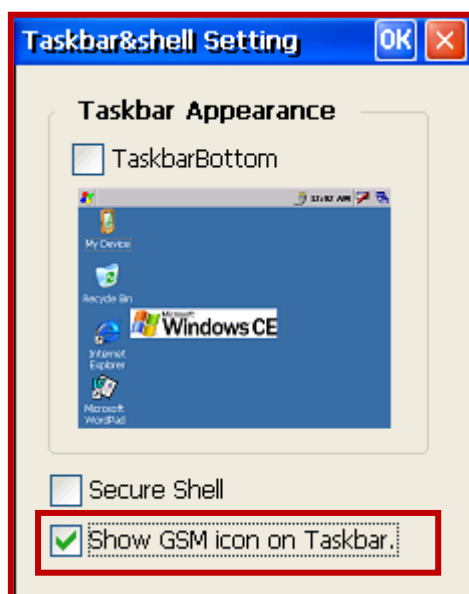
Icon is Green – ON

Icon is Red – OFF

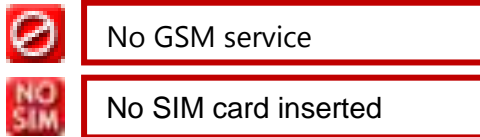


The GSM status will be displayed at the top right of the device via a GSM icon.

In order to check the service and coverage of GSM, go to **Start -> Settings -> Control Panel -> Taskbar Setting**. Check on the **Show GSM icon on Taskbar**.



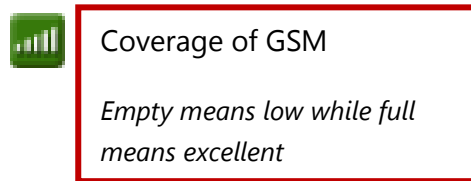
If there is no SIM card inserted into HRT500, there are two icons shown on the taskbar.



Before GSM module is configured, this icon,  - GSM OFF will appear on the taskbar.



After the GSM module is configured, two new icons will appear on the taskbar. Both of the icons show the status of the GSM module of the HRT500.



Using the Contact Card Reader

1. Insert the smart card (chip facing inwards) into the contact card slot which is located by the right side of the device.



Using the Contactless Reader (RFID)

1. Hold the card close to the contactless reader, located at the back of the device for card reading.
2. The read range of contactless reader is up to 2cm. The card must be held within this range for contactless reading.



Using the Fingerprint Sensor

1. When the optical finger print sensor is ready, the sensor window will light up.
2. Place the finger on the centre of the finger print sensor window.
3. Wait and remove the finger only when the sensor light turns dim.



Using the Barcode Scanner

1. Trigger the barcode scanner.
2. Aim the scanner towards the barcode to do read it.
3. Once done, the scanner will be automatically turned off and result will be displayed.



Appendix: Troubleshooting Guide

Reset the HRT500 and clear memory

To Reset the HRT500

If the HRT500 responds slowly or “freezes”, try resetting it.

Please note that any unsaved data in the open windows may be lost during the reset.

- Use the stylus to press the **Reset** button.

Restore to Factory Setting

1. Turn the HRT500 ON.
2. Press and hold the **Side Button (right)** button, and use the stylus to press the **Reset** button. A window as below will be shown on the screen.
3. Press the **Side Button (left)**, button to scroll, select **Restore to Factory Setting**.



4. Press the **Side Button (right)**. Then, select **Yes** by pressing **Side Button (right)** again.

If HRT500 runs out of Power

Low Battery Power

When battery is running low, user will see a low battery icon in the navigation bar. Kindly replace or recharge the battery as soon as possible. Running on low battery power will affect the device's peripheral performance. Hence, the device will automatically shut down when the battery power is critically low. Under normal conditions, a fully charged battery can be used for long hours.

WARNING


If the battery is low, user runs the risk of losing the data in HRT500

Use External Power Whenever Possible


Use the AC adapter to plug the HRT500 into external power whenever possible, especially during:

- Establishing a remote connection (some modems use a lot of power).
- Using the backlight feature of user's HRT500 display.
- Connecting to a desktop computer.


Shorten the Auto-Suspend Time

HRT500 will automatically suspend after a predefined idle period. Maximize the battery's lifespan by shortening the idle time. Tap  and then **Settings**. On the **Control Panel** tab, tap **Power**, and then adjust the **Schemes** setting.

Turn Off the Sounds when Necessary

HRT500 produces sounds in response to a number of events, such as warnings, appointments, and screen taps or when user press hardware-button. To optimize battery's lifespan, turn off any unnecessary sounds. Tap  and then **Settings**. On the **Control Panel** tab, tap **Volume & Sounds** and clear check boxes on the **Events**, **Application**, **keyClicks** and **Notification** tabs.


Turn Off the Unused Peripherals

Turning OFF all the unused peripherals in the device will save and optimize the battery's lifespan. To turn OFF all the unused peripherals, tap  and then **Settings**. On the **Control Panel** tab, tap **Power Control** and switch OFF all the unused peripherals.

If HRT500 runs out of Memory

Memory of HRT500 is shared between storage memory and program memory. Storage memory is used to store the information created and programs installed. Program memory is used to run programs in the HRT500. The HRT500 automatically manages the allocation between storage and program memories. However, in some situations, such as when memory is low, the HRT500 may not be able to automatically adjust the allocation. If user receives a message stating that storage or program memory is unavailable, try the following solutions.

Storage Memory-Secure Digital (SD) Storage Card

1. Move data to a Secure Digital (SD) Storage Card.
2. Tap , **Program** and then **Windows Explorer**. A folder named **"Storage Card"** will appear once the SD memory card is inserted.
3. This folder will disappear automatically once the card is taken out from the slot.
4. Move any file or data into the **"Storage Card"** folder for backup purposes.
5. Files or data save in the SD card can be opened in any other SD card reader or computer.
6. Files copied from computer can also be opened in the device, as long as it does not exceed the memory of the device.

Program memory

1. Stops inactive programs.
2. Clear storage memory as described in the preceding section.
3. Reset the device, as described in **"Reset the HRT500"**.

Screen is Blank

If the HRT500 does not respond when user presses the Power button, press and hold the button for a full second. If this does not work:

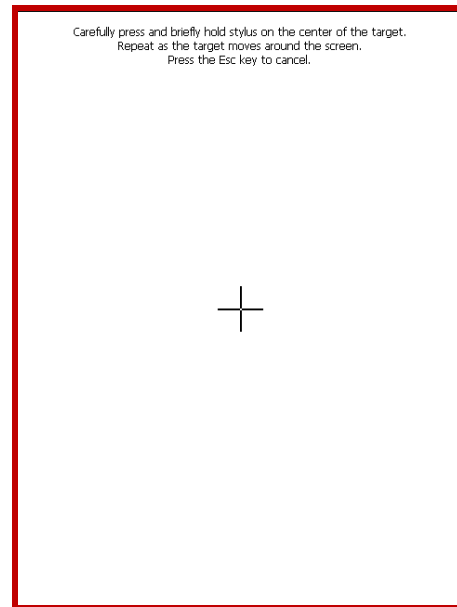
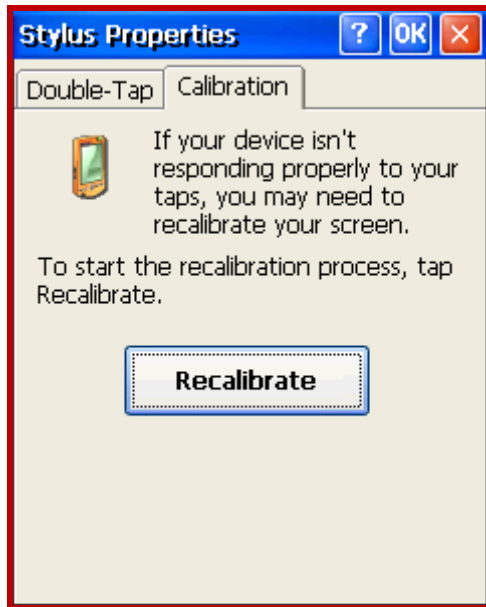
1. Make sure user's battery cover is locked and all expansion slots are secured.
2. Plug the HRT500 into AC power.
3. Change or recharge the main battery.

Screen is Dark

Prolonged exposure of the HRT500 to direct sunlight may cause user's HRT500 screen to be temporarily dim. This is a normal case for LCD screens and it is not permanent.

Inaccurate Response to Stylus Taps

Tap  and then **Settings**. On the **Control Panel**, tap **Stylus**. In the **Stylus Properties**, choose **Calibration**. Tap "**Calibrate**".



Routine Maintenance

This section provides routine maintenance guidelines. Following these guidelines, helps to ensure the lifespan of HRT500 and reduces the risk of damage.

Routine Care

To keep HRT500 in good condition and working properly, follow these guidelines:

- Keep HRT500 away from excessive moisture and extreme temperature.
- Do not expose HRT500 to liquids or precipitation.
- Do not place anything on top of HRT500 to prevent damage to the screen.
- Store HRT500 in a protective case when not in use.
- Clean HRT500 by wiping the screen and the exterior with a soft, damp cloth moistened only with water.



To reduce the risk of electric shock or damage to the internal components, do not spray liquid directly on the screen or allow excess liquid to drip inside the HRT500. Using soap or other cleaning products on the screen may discolor and damage the screen.

- Avoid exposing HRT500 to direct sunlight or strong ultraviolet light for extended periods of time. Also avoid scratching the surface of the screen and banging it against hard objects.
- Use only HRT500's stylus to prevent scratches on the screen.

Battery Guidelines

Follow local regulations regarding the safe disposal of HRT500. Vendors can advise user on local regulations and the existence of any battery disposal programs in the operation.

HRT500 should not be disposed along with the general household waste. In order to forward it for recycling or proper disposal, please use the public collection system or return it to PRADOTEC or the authorized partners

Travel Guidelines

For safety and convenience when traveling with HRT500, follow these guidelines:

- Back up data before travel.
- Take a backup copy.
- Disconnect all external equipment from HRT500.
- Take along the AC adapter and new batteries.
- Hand-carry HRT500 in a protective case. Do not check in with luggage.
- Beware of potential effects of airport security devices on the HRT500.



*There are three types of airport security devices: X-ray machines, magnetic detectors (the device passenger walks through **for security scanning**), and security magnetic wands. The device can be sent through airport's X-ray machines. However, it is recommended that the device does not send through the magnetic detectors or expose it to security magnetic wands.*

- Check with the airline if there is a plan to use the device on the plane. In-flight, the use of electronic devices is at the discretion of the airline.

International Travel

Before traveling internationally with HRT500, be sure to:

- Check local customs regulations on wireless devices.

Shipping Guidelines

When shipping the HRT500, follow these guidelines:

- Safeguard data by making a backup copy.
- If shipping the backup copy, be sure that the medium (diskette, tape, or SD card) is not exposed to electrical or magnetic impulses while stored or in transit.
- Turn off HRT500 and disconnect all external devices.
- Pack HRT500 and all external devices (such as the cradle, cords, and cables) in their original packing boxes or in similar packaging with sufficient packing material to protect them.

FCC STATEMENT :

This device(FCC ID: SX3-HRT500I) complies with Part 15 of the FCC Rules. Operation is subject to the following two conditions: (1) This device may not cause harmful interference, and

(2) This device must accept any interference received, including interference that may cause undesired operation.

NOTE: This equipment has been tested and found to comply with the limits for a Class B digital device, pursuant to Part 15 of the FCC Rules. These limits are designed to provide reasonable protection against harmful interference in a residential installation.

This equipment generates uses and can radiate radio frequency energy and, if not installed and used in accordance with the instructions, may cause harmful interference to radio communications. However, there is no guarantee that interference will not occur in a particular installation. If this equipment does cause harmful interference to radio or television reception, which can be determined by turning the equipment off and on, the user is encouraged to try to correct the interference by one or more of the following measures:

Reorient or relocate the receiving antenna.

Increase the separation between the equipment and receiver.

Connect the equipment into an outlet on a circuit different from that to which the receiver is connected.

Consult the dealer or an experienced radio/TV technician for help.

Warning: Changes or modifications not expressly approved by the party responsible for compliance could void the user's authority to operate the equipment.

SAR Statement:

The device complies with RF specifications when used near at a distance of 0 cm from your body.

Ensure that the device accessories, such as a device case and device holster, are not composed of metal components. Keep the device away from your body to meet the distance requirement.

This device is also designed to meet the requirements for exposure to radio waves established by the Federal Communications Commission(USA).

The SAR limit adopted by the USA is 1.6 W/kg averaged over one gram of tissue.

The highest SAR value reported to the FCC for this device type complies with this limit.

The highest SAR value reported to the FCC for this device type when properly worn on the body is 0.121W/kg