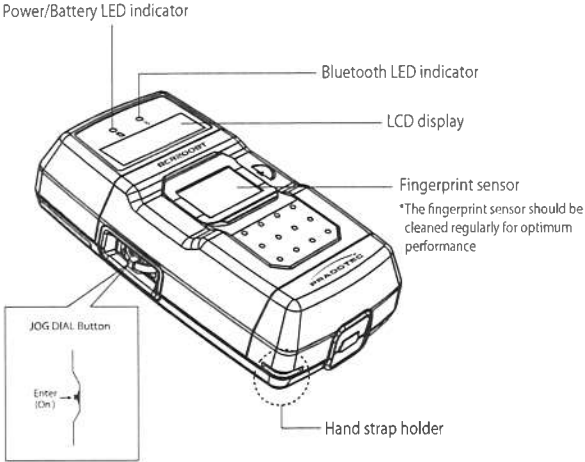




# BCR200BT

## Biometric Card Reader Quick Guide

### Overview



### Pairing the Device

1. Turn on BCR200BT and navigate to ">>BLUETOOTH OPR" menu.
2. Push up/down jog-dial to navigate the sub-menus.
3. The sub-menus are describe as following:
  - "set visible": Discoverable by other Bluetooth device for 2 minutes.
  - "set invisible": Disable pairing mode.
  - "reset Bluetooth": Reset BCR200BT Bluetooth module.
4. Navigate to "set visible" sub-menu option and press jog-dial button to put the device into pairing mode.
5. Host can now initiate pairing with passkey.
6. Once connected the Bluetooth LED (blue) indicator will turn on.

### LCD Messages



Default



Bluetooth Status



Time and Date Configuration



Bluetooth Operation

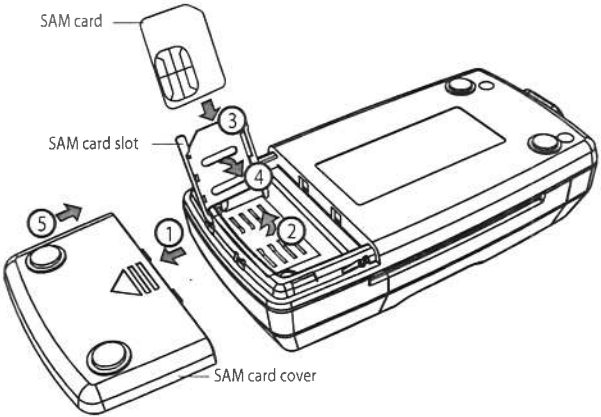


Device Operation



Charging Status

### Inserting SAM Card

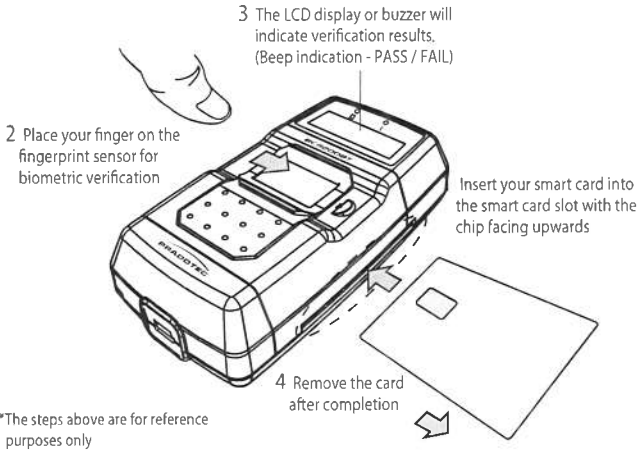


Perform steps 1 to 5 to insert the SAM card as shown above  
\*Ensure USB cable is unplugged from the device before inserting SAM card

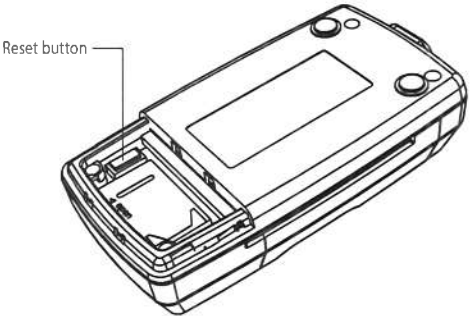
### LED and Buzzer Status

| LED                  |          |  |
|----------------------|----------|--|
| Backlight LED        | On       | Jog-dial button is pushed / pressed                |
|                      | Off      | Device is inactive for 15 seconds.                 |
| Bluetooth LED (blue) | Blinking | Bluetooth is in discoverable mode ( pairing mode ) |
|                      | On       | BCR200BT is connected to host via SPP              |
|                      | Off      | Inactive   |
| Battery LED (red)    | Blinking | Charging / low battery                             |
|                      | On       | Fully charged                                      |
| Buzzer               |          |  |
| Buzzer Beep          |          | Low battery ( Battery LED will blink )             |

### Operating Biometric Card Reader



### Resetting the Unit



Alternatively, to quickly turn off the device, press the reset button at the SAM opening at the back of the device.

PRADOTEC CORPORATION SDN. BHD.  
Email: inquiry@pradotec-global.com  
www.pradotec-global.com

## **FCC STATEMENT :**

This device complies with Part 15 of the FCC Rules. Operation is subject to the following two conditions:

- (1) This device may not cause harmful interference, and
- (2) This device must accept any interference received, including interference that may cause undesired operation.

**Warning:** Changes or modifications not expressly approved by the party responsible for compliance could void the user's authority to operate the equipment.

NOTE: This equipment has been tested and found to comply with the limits for a Class B digital device, pursuant to Part 15 of the FCC Rules. These limits are designed to provide reasonable protection against harmful interference in a residential installation.

This equipment generates uses and can radiate radio frequency energy and, if not installed and used in accordance with the instructions, may cause harmful interference to radio communications. However, there is no guarantee that interference will not occur in a particular installation. If this equipment does cause harmful interference to radio or television reception, which can be determined by turning the equipment off and on, the user is encouraged to try to correct the interference by one or more of the following measures:

- Reorient or relocate the receiving antenna.

- Increase the separation between the equipment and receiver.

- Connect the equipment into an outlet on a circuit different from that to which the receiver is connected.

- Consult the dealer or an experienced radio/TV technician for help.

## **RF warning statement:**

The device has been evaluated to meet general RF exposure requirement. The device can be used in portable exposure condition without restriction.