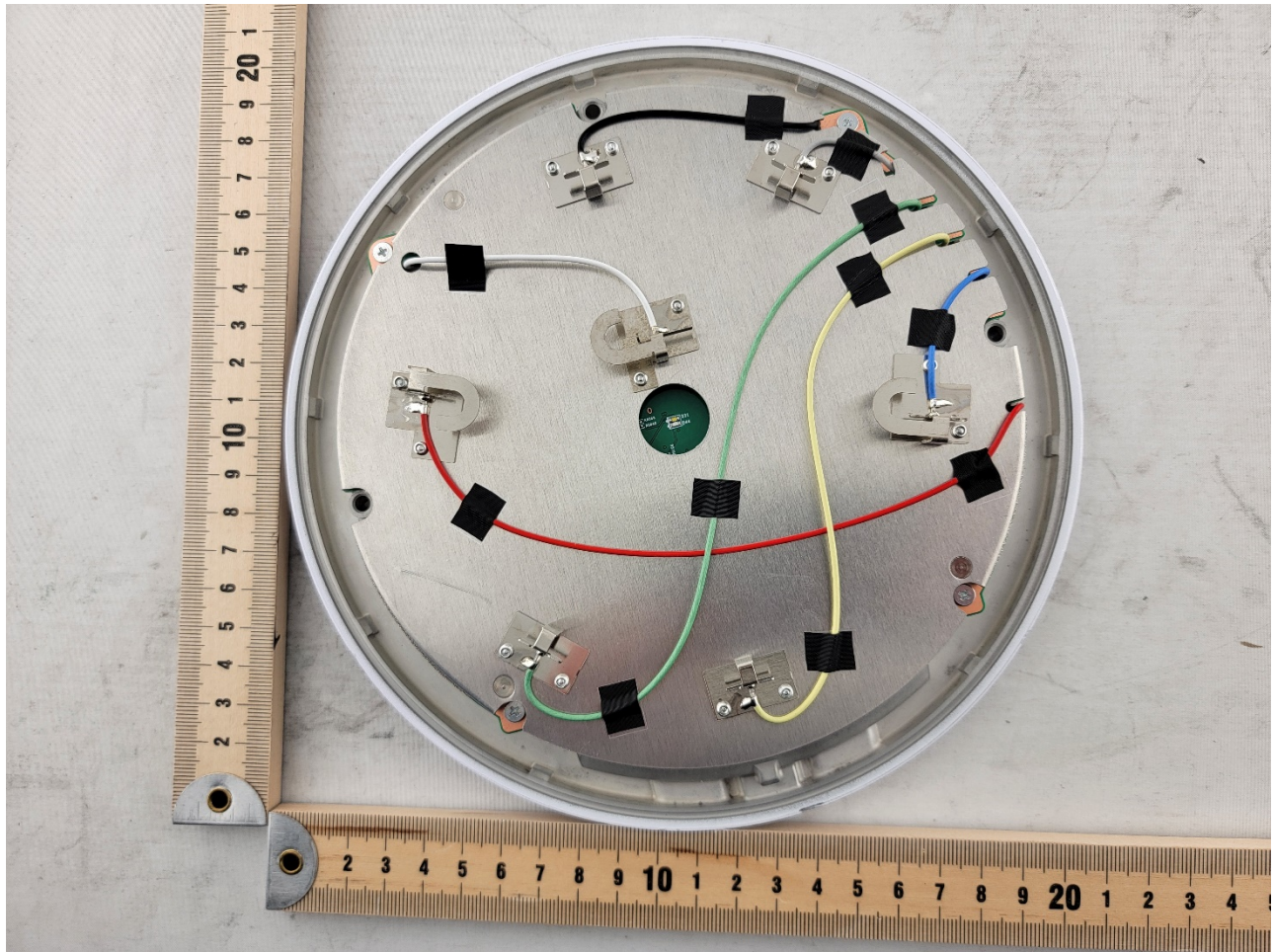


Photograph 1: Internal View Front Cover Off

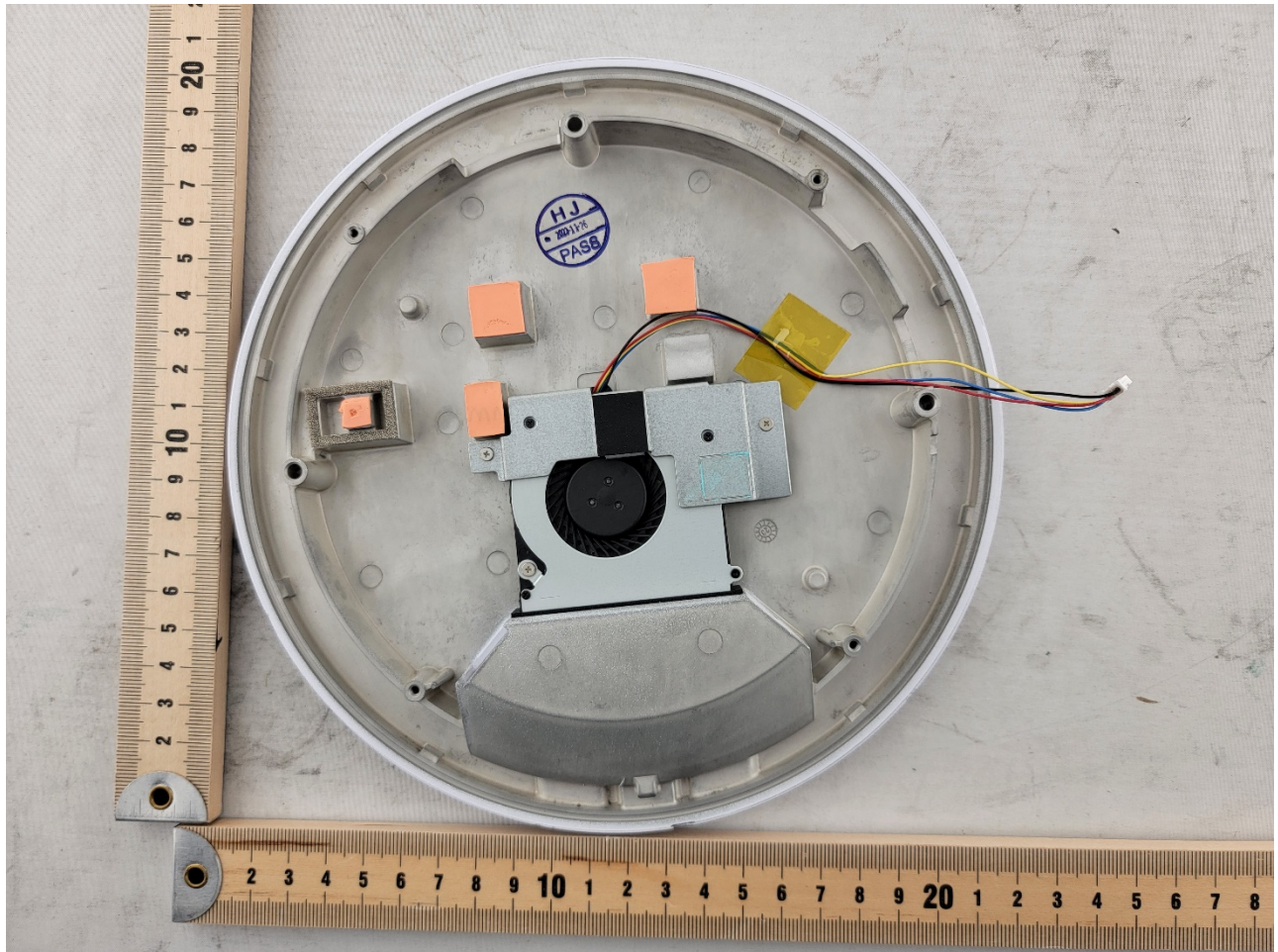


Photograph 2: Internal View Antenna PCB in Bottom Case



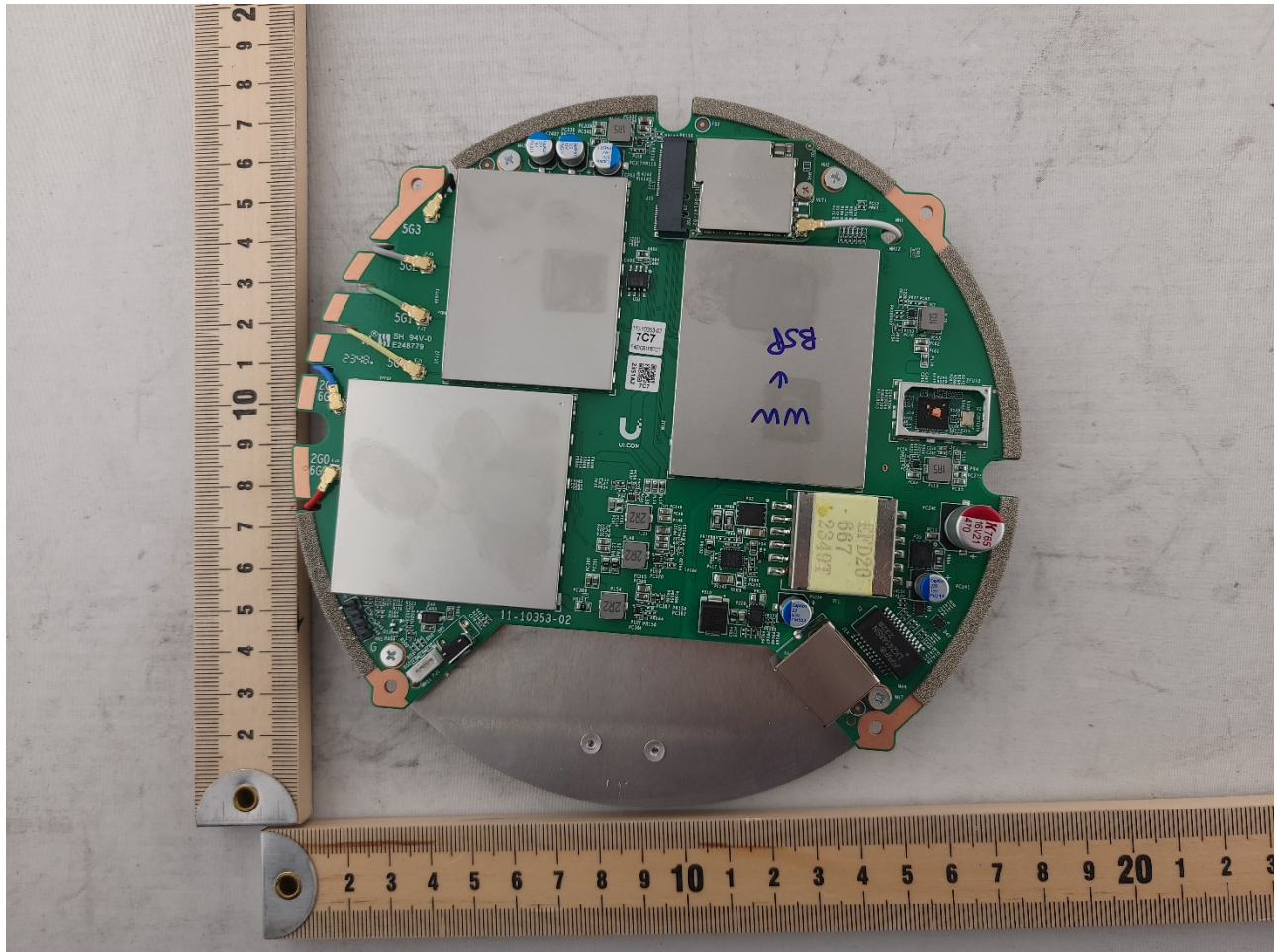


Photograph 3: Internal View Antenna/Main PCB Removed

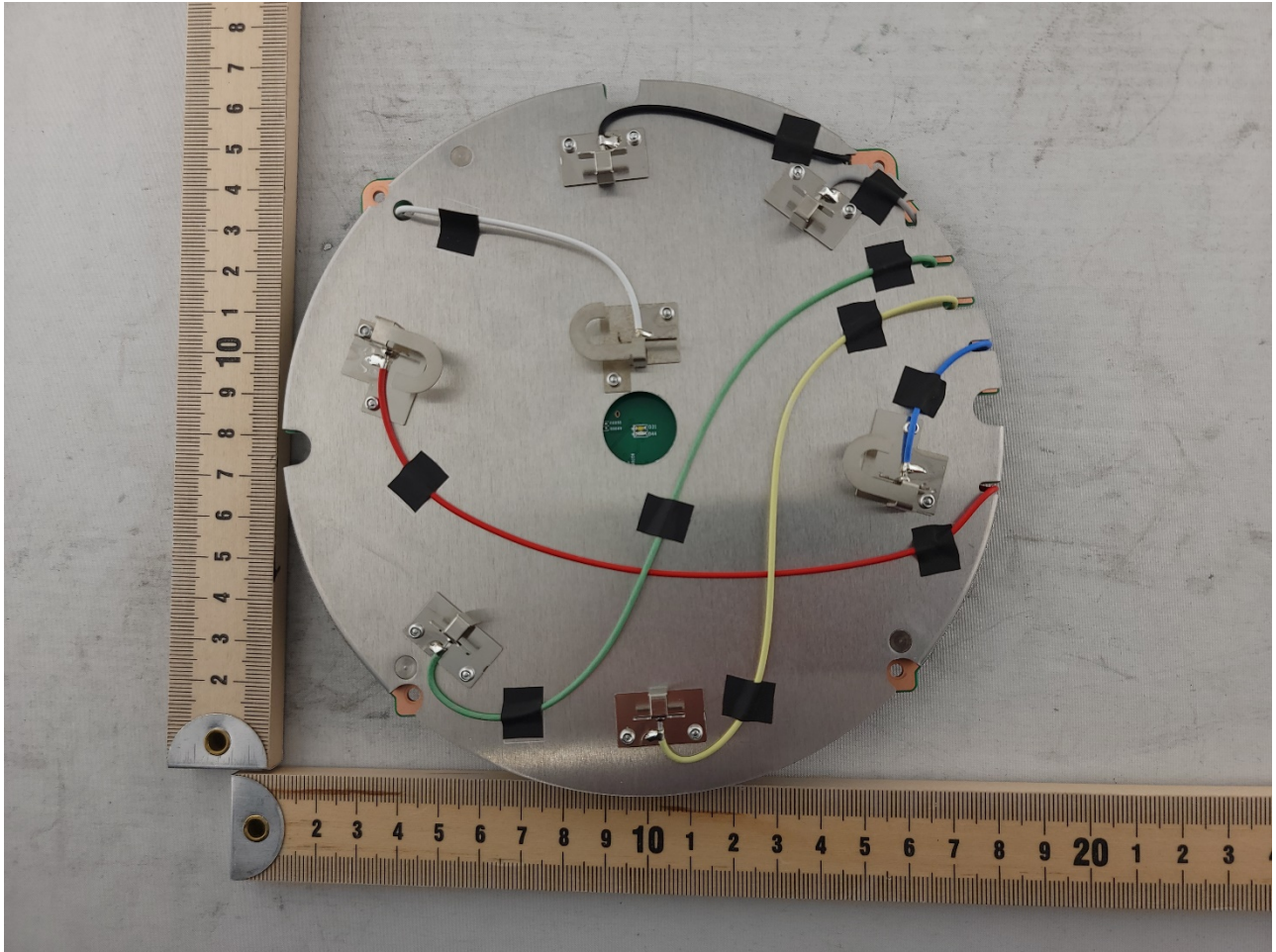


Photograph 4: Internal View Bottom Close Up





Photograph 5: Internal View Main PCB with Antenna PCB Attached



Photograph 6: Internal View Antenna PCB with Main PCB Attached