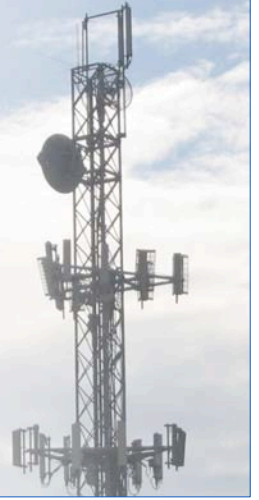




XTREMERange5

Carrier-Class 5GHz 802.11a Radio Module



OEM INTEGRATION GUIDE



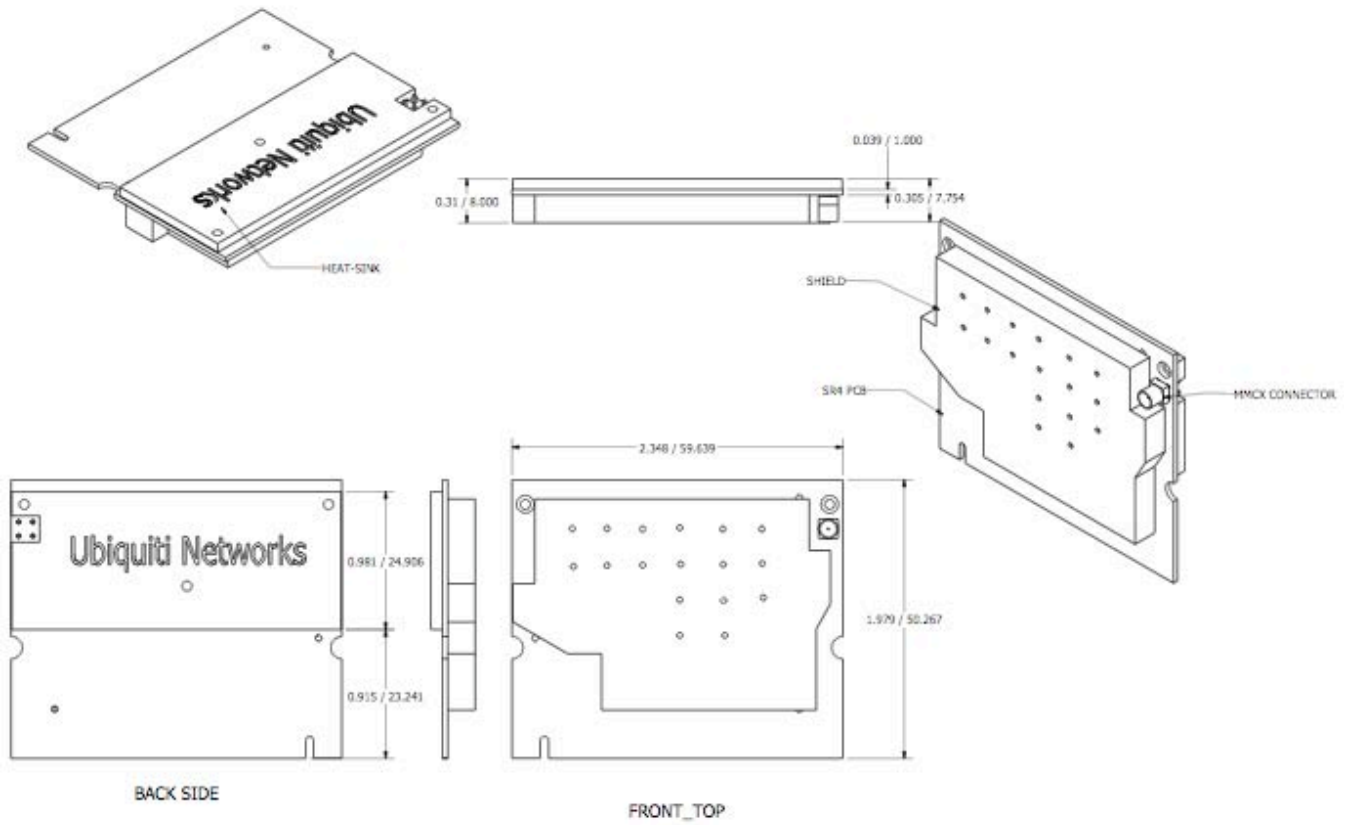
XTREMERange5

TECHNICAL SPECIFICATIONS

CARD INFORMATION			
Chipset	Atheros, 6th Generation, AR5414 with SuperA/Turbo Support		
Radio Operation	IEEE 802.11a, 5GHz		
Interface	32-bit mini-PCI Type IIIA		
Operation Voltage	3.3VDC		
Antenna Ports	Single MMCX		
Temperature Range	-40C to +80C (extended temp version up to +95C)		
Security	WPA, WPA2, AES-CCM & TKIP Encryption, 802.1x, 64/128/152bit WEP		
Data Rates	6Mbps, 9Mbps, 12Mbps, 24Mbps, 36Mbps, 48Mbps, 54Mbps		
TX Channel Width Support	5MHz / 10MHz / 20MHz / 40MHz		
RoHS Compliance	YES		
REGULATORY INFORMATION			
Wireless Modular Approvals	FCC Part 15.247 (23dBi Antenna), IC RS210, CE with Notified Body Number		
RADIO OPERATING FREQUENCY 5.20-5.825GHz			
TX SPECIFICATIONS		RX SPECIFICATIONS	
802.11a OFDM	DataRate	Avg.Power	Tolerance
	6Mbps	28 dBm	+/-1.5dB
	9Mbps	28 dBm	+/-1.5dB
	12Mbps	28 dBm	+/-1.5dB
	18Mbps	28 dBm	+/-1.5dB
	24Mbps	28 dBm	+/-1.5dB
	36Mbps	26 dBm	+/-1.5dB
	48Mbps	24 dBm	+/-1.5dB
54Mbps	23 dBm	+/-1.5dB	
802.11a OFDM	DataRate	Sensitivity	Tolerance
	6Mbps	-94 dBm	+/-1.5dB
	9Mbps	-93 dBm	+/-1.5dB
	12Mbps	-91 dBm	+/-1.5dB
	18Mbps	-90 dBm	+/-1.5dB
	24Mbps	-86 dBm	+/-1.5dB
	36Mbps	-83 dBm	+/-1.5dB
	48Mbps	-77 dBm	+/-1.5dB
54Mbps	-74 dBm	+/-1.5dB	
ADJUSTABLE CHANNEL SIZE SUPPORT (Increase Channel Capacity or Increase Throughput)			
5MHz	10MHz	20MHz	40MHz (Turbo)
CURRENT CONSUMPTION INFORMATION			
TX CURRENT CONSUMPTION		RX CURRENT CONSUMPTION	
802.11a OFDM	DataRate	Current	Tolerance
	6Mbps	1.80 A	+/-100 mA
	9Mbps	1.80 A	+/-100 mA
	12Mbps	1.80 A	+/-100 mA
	18Mbps	1.80 A	+/-100 mA
	24Mbps	1.80 A	+/-100 mA
	36Mbps	1.50 A	+/-100 mA
	48Mbps	1.30 A	+/-100 mA
54Mbps	1.10 A	+/-100 mA	
802.11a OFDM	DataRate	Current	Tolerance
	6Mbps	300 mA	+/-100 mA
	9Mbps	300 mA	+/-100 mA
	12Mbps	300 mA	+/-100 mA
	18Mbps	300 mA	+/-100 mA
	24Mbps	300 mA	+/-100 mA
	36Mbps	300 mA	+/-100 mA
	48Mbps	300 mA	+/-100 mA
54Mbps	300 mA	+/-100 mA	
RANGE PERFORMANCE			
Indoor (Antenna Dependent):	Up to 150meters		
Outdoor (Antenna Dependent):	Over 50km		
DRIVER INFORMATION			
Operating System Support	Linux MADWIFI, WindowsXP, Windows2000		
Advanced Mobility / QuickHandoff	WindowsXP/2000 Utility with Enhanced Mobility Driver from Ubiquiti		
Cisco Support	CCX 4.0 Certified Driver/Utility also available from Ubiquiti		
For help with MADWIFI or other Special Driver Support, Please e-mail support@ubnt.com			

XTREMERange5

MECHANICAL DIMENSIONS



495-499 Montague Expwy.
Milpitas, CA 95035
San Jose, CA 95112
T (408)-942-3085
F (408)-351-4973
<http://www.ubnt.com>