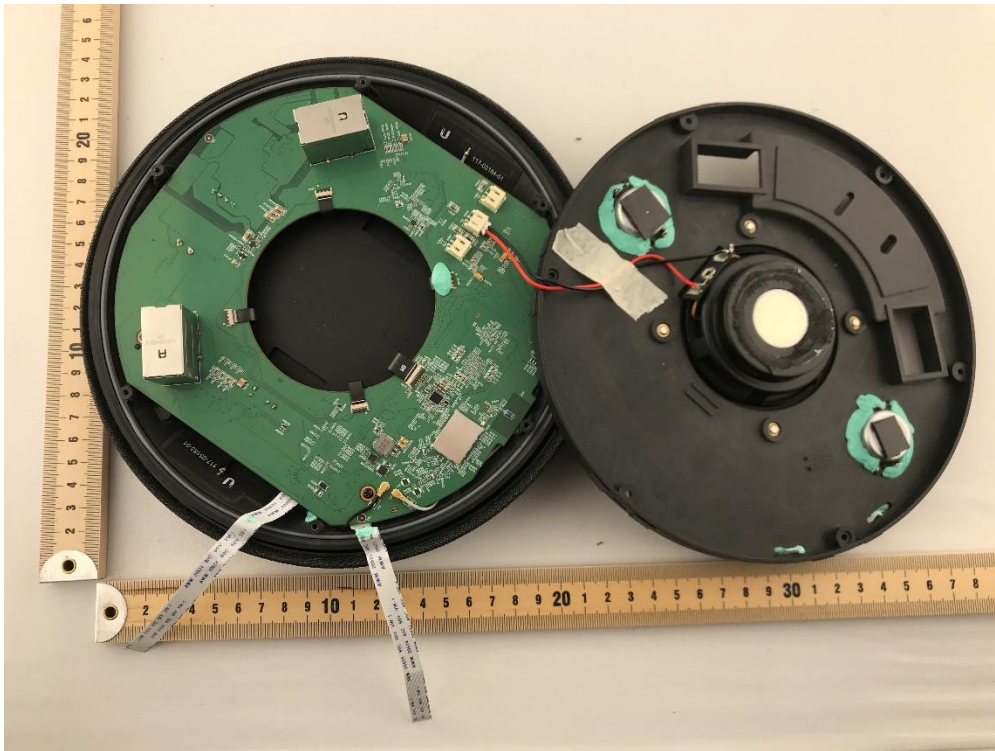
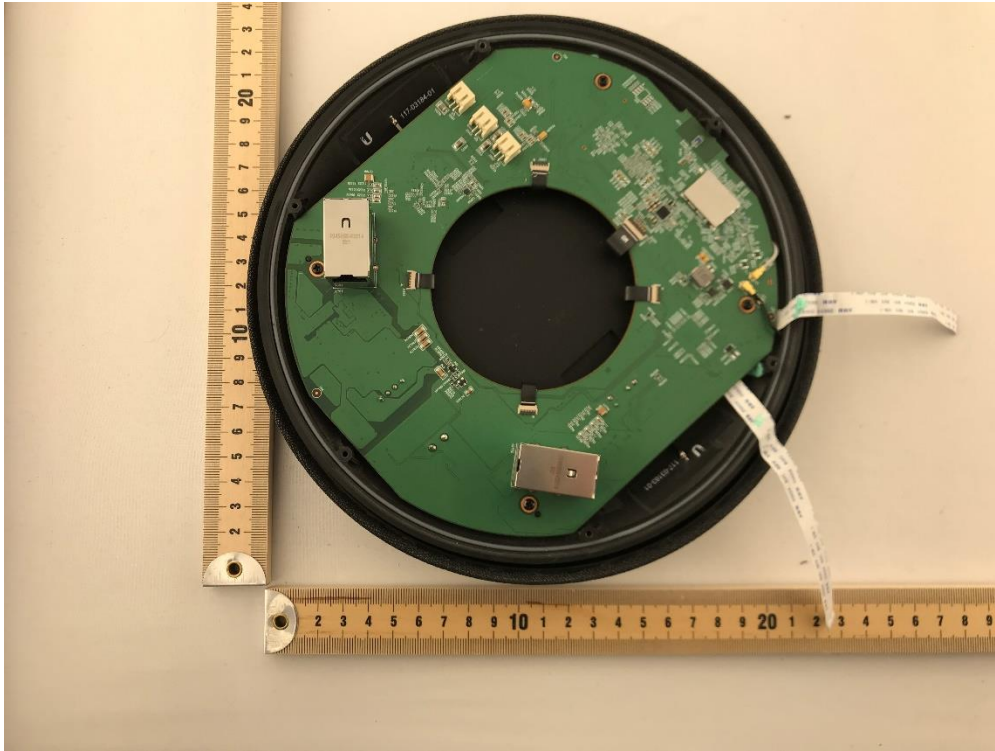


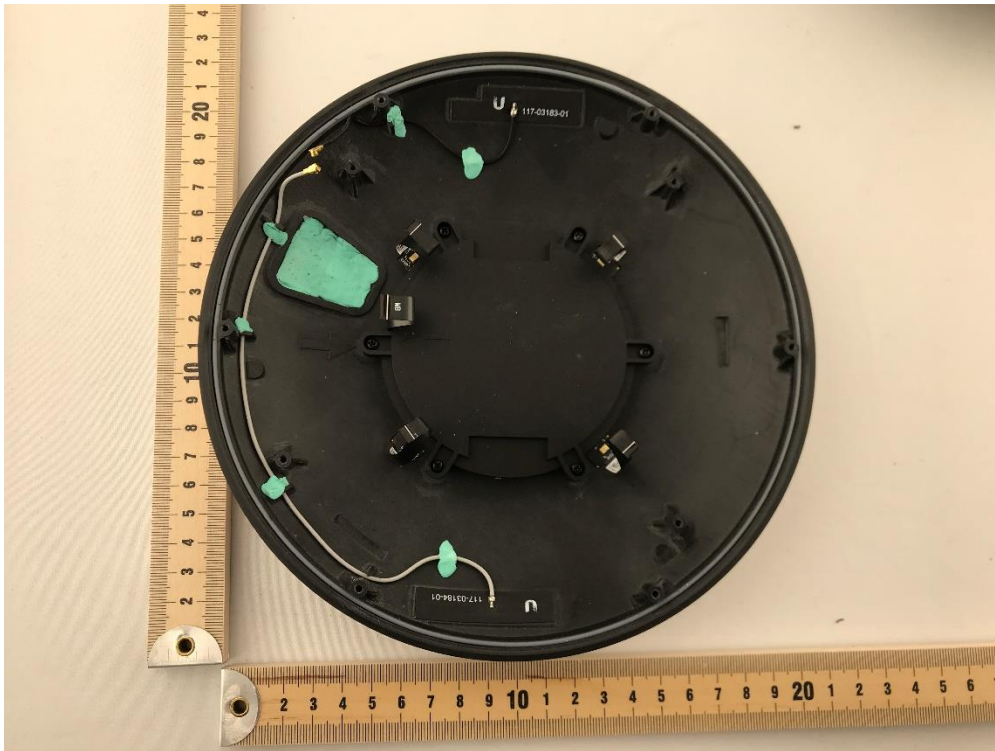
Photograph 1: Base Removed



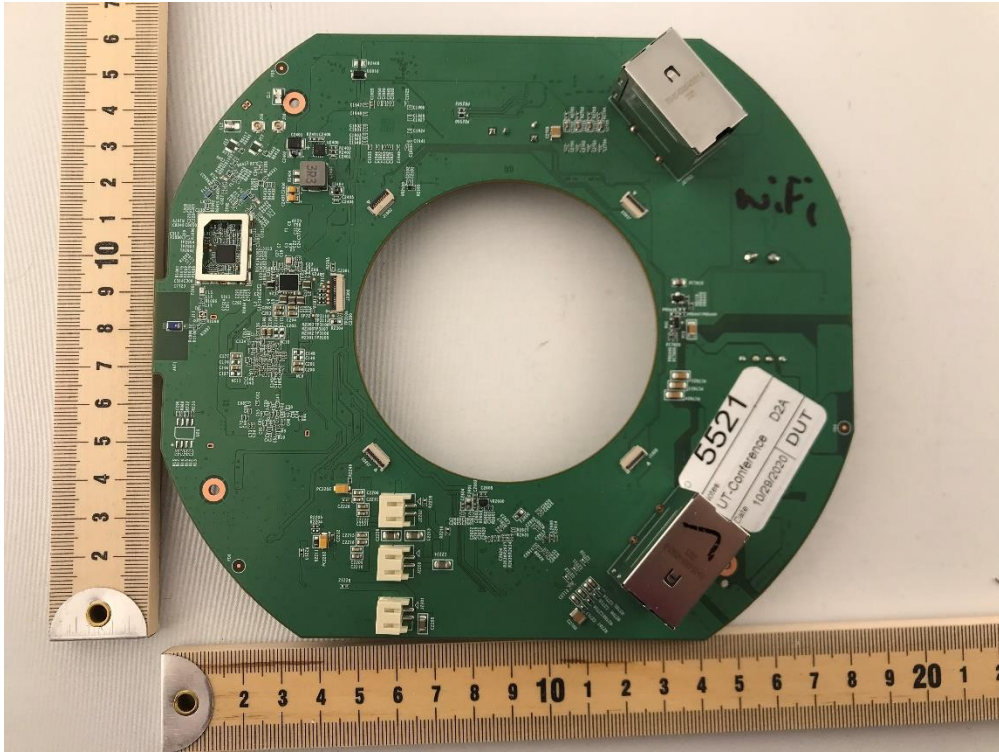
Photograph 2: Inner Cover Detached



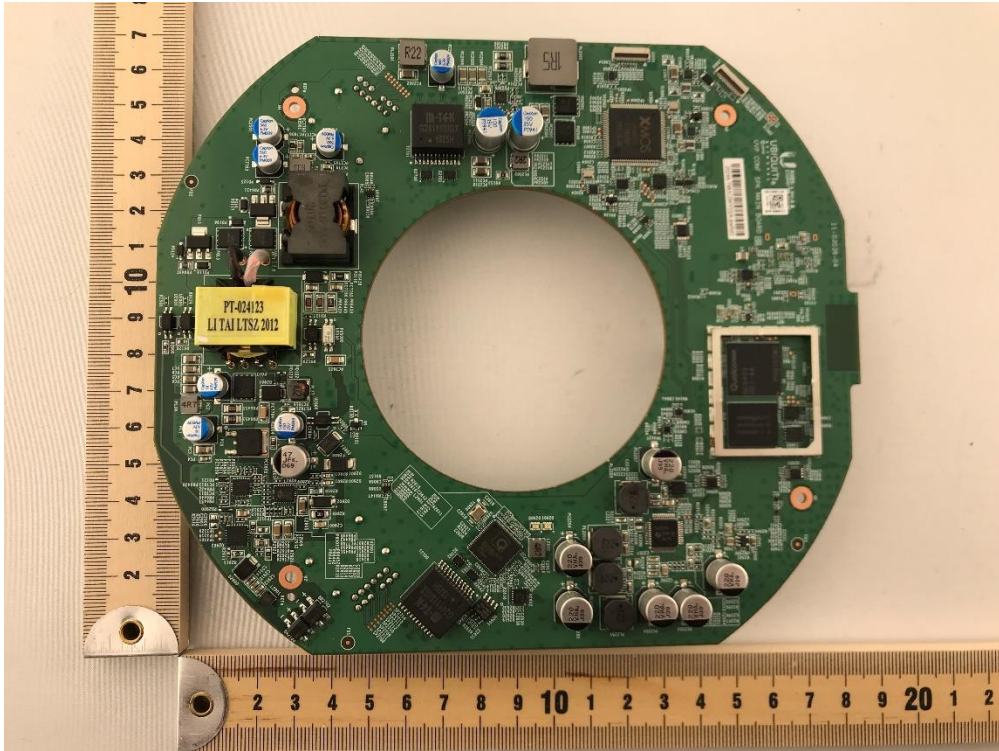
Photograph 3: Inner Cover Removed



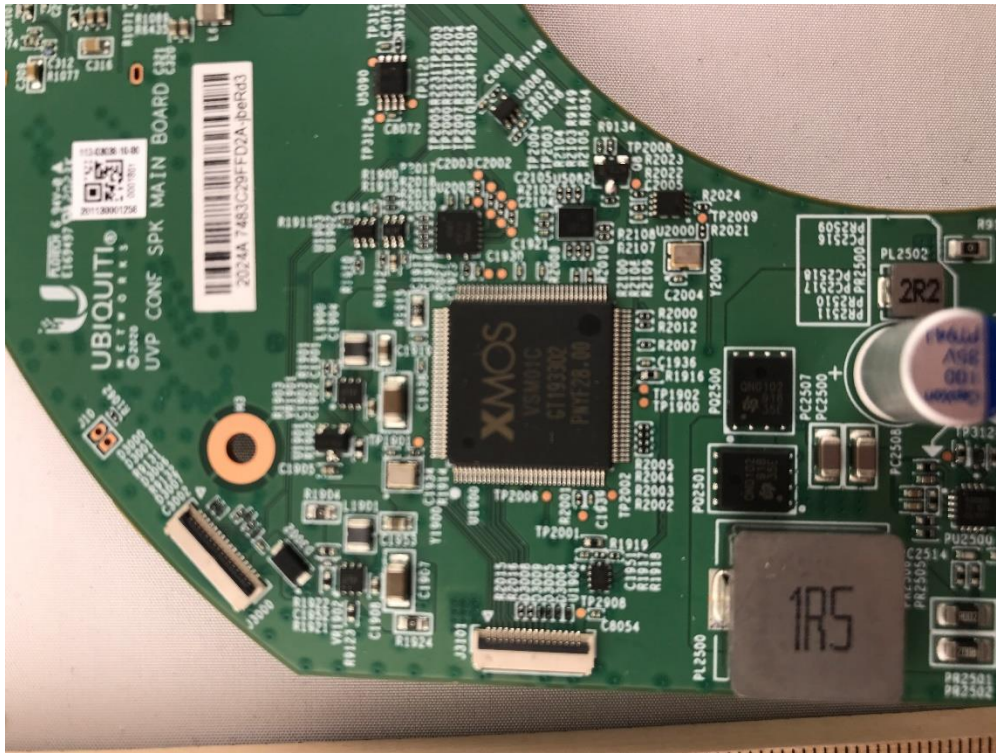
Photograph 4: Circuit Board Removed



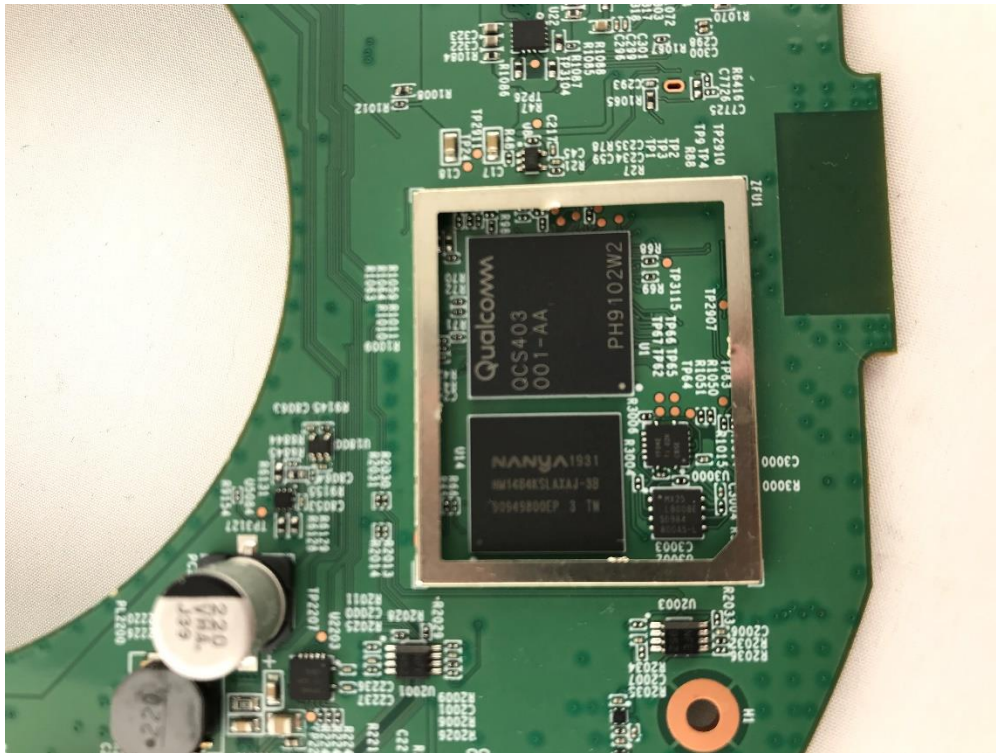
Photograph 5: Bottom of Circuit Board



Photograph 6: Top of Circuit Board



Photograph 7: Close-up #1



Photograph 8: Close-up #2

