



UniFi® StadiumXG

Quad-Radio 802.11ac
Wave 2 Access Point with
Dedicated Security and
Beamforming Antenna

Model: UAP-StadiumXG

QUICK START GUIDE

Introduction

Thank you for purchasing the Ubiquiti Networks® UniFi® Quad-Radio 802.11ac Wave 2 Access Point with Dedicated Security and Beamforming Antenna. This Quick Start Guide is designed to guide you through installation and includes warranty terms.

IMPORTANT: The UAP-StadiumXG requires the UniFi Controller v5.7 or higher, available at: www.ubnt.com/download/unifi

Package Contents



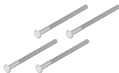
UniFi Stadium XG AP



Adjustment Bracket



Pole Clamp



Carriage Bolts
(Qty. 4)



Flange Nuts
(Qty. 4)



Lag Screws
(Qty. 4)



Gigabit PoE
(50V, 1.2A)



Power Cord



Quick Start
Guide

TERMS OF USE: Ubiquiti radio devices must be professionally installed. Shielded Ethernet cable and earth grounding must be used as conditions of product warranty. TOUGHCable™ is designed for outdoor installations. It is the professional installer's responsibility to follow local country regulations, including operation within legal frequency channels, output power, and Dynamic Frequency Selection (DFS) requirements.

Installation Requirements

- 13 mm wrench
- Cat5/6 UTP cable for indoor installations

Outdoor Installation Requirements

- Shielded Category 5 (or above) cabling with should be used for all outdoor wired Ethernet connections and should be grounded through the AC ground of the PoE.

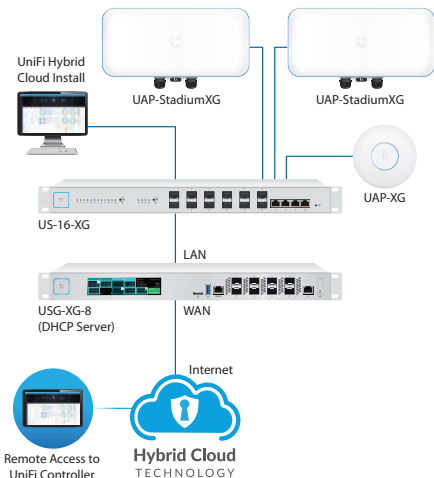
We recommend that you protect your networks from harmful outdoor environments and destructive ESD events with industrial-grade, shielded Ethernet cable from Ubiquiti Networks. For more details, visit: **www.ubnt.com/toughcable**

System Requirements

- Linux, Mac OS X, or Microsoft Windows 7/8/10
- Java Runtime Environment 1.8 or above recommended
- Web Browser: Google Chrome (Other browsers may have limited functionality.)
- UniFi Controller software v5.7 or newer (available at: **www.ubnt.com/download/unifi**)

Network Topology Requirements

- A DHCP-enabled network (for the AP to obtain an IP address as well as for the wireless clients after deployment)
- A UniFi Cloud Key or management station running the UniFi Controller v5.7 (or newer) software, located either on-site and connected to the same Layer 2 network, or off-site in the cloud or NOC



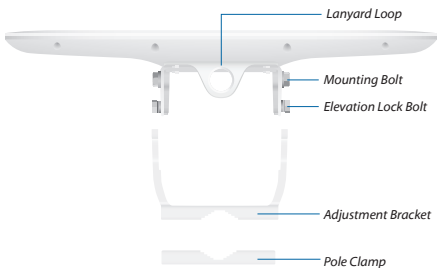
Sample Network Diagram

All UniFi devices support off-site management controllers. For setup details, see the User Guide on the website:

www.ubnt.com/download/unifi

Hardware Overview

Top View



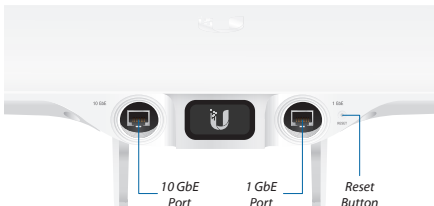
LED

The RGB LED is set to the factory defaults below; however, the color and lighting pattern are software-controllable.



LED Color	Status
White	Factory default, waiting to be integrated.
Flashing White	Initializing.
Alternating White/Blue	Device is busy; do not touch or unplug it. This usually indicates that a process such as a firmware upgrade is taking place.
Blue	Indicates the device has been successfully integrated into a network and is working properly.
Quickly Flashing Blue	This is used to locate an AP. When you click Locate in the UniFi Controller software, the AP will flash. It will also display the location of the AP on the map.
Steady Blue with Occasional Flashing	Indicates the device is in an isolated state (all WLANs are brought down until an uplink is found).

Ports



10 GbE The *10 GbE* port is a 1/10 Gbps Ethernet port used to connect to the LAN and DHCP server. It can also be used to connect the power.

! **Note:** The UAP-StadiumXG can be powered using an 802.3bt PoE switch or the included *Gigabit PoE* adapter. For instructions, see *Powering the UniFi AP*.

1 GbE The *1 GbE* port is a 10/100/1000 Ethernet port used for bridging. It can also be used to connect the power.

Reset The *Reset* button serves two functions for the UAP-StadiumXG:

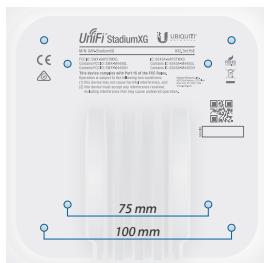
- **Restart** Press and release the *Reset* button quickly.
- **Restore to Factory Default Settings** Press and hold the *Reset* button for more than five seconds.

VESA Mounting

If you choose to use your own mount, remove the four M4 x 10 screws from the back of the UAP-StadiumXG and detach the pre-installed mount.



The 8-hole mounting pattern on the back of the UAP-StadiumXG follows the VESA MIS-D standard and can be used with mounts that comply with this standard. Use either the 100 x 100 mm or 75 x 75 mm square hole pattern with M4 x 10 screws.



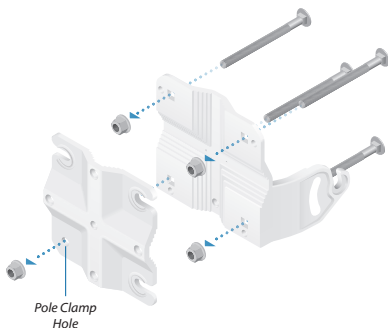
640-00357-01

Hardware Installation

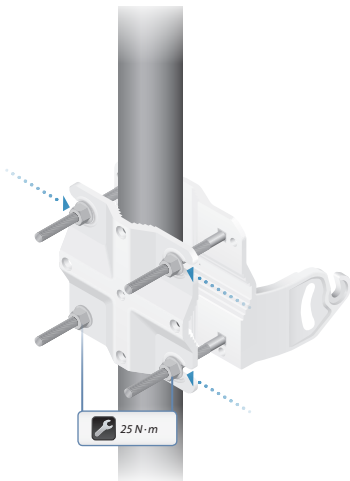
The UAP-StadiumXG can be mounted on a pole or wall.
Proceed to the appropriate instructions for your installation.

Pole Mount

1. Attach the *Pole Clamp* to the *Adjustment Bracket*.
 - a. Hold the *Adjustment Bracket* with its clamps facing you.
 - b. Insert the *Carriage Bolts* through the rectangular holes of the *Adjustment Bracket*.
 - c. Slide the single hole of the *Pole Clamp* over the corresponding *Carriage Bolt*.
 - d. Place one *Flange Nut* on each bolt.



2. Mount the *Adjustment Bracket* on the pole and secure it.
 - a. Place the *Adjustment Bracket* against the pole.
 - b. Slide the three slots of the *Pole Clamp* over the corresponding *Carriage Bolts*.
 - c. Tighten the *Flange Nuts* of the bolts to 25 N·m to secure the *Adjustment Bracket* to the pole.

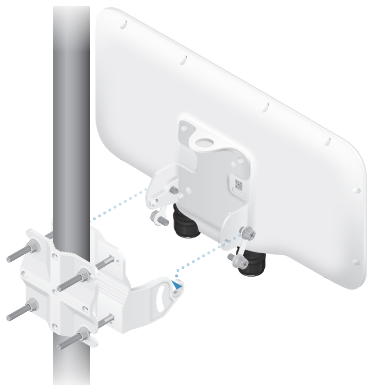


Note: The mounting assembly can accommodate a Ø 25.4 - 50.8 mm pole.

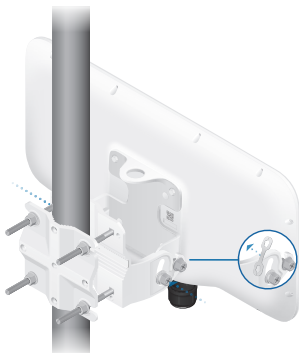
3. Loosen and remove the *Elevation Lock Bolts* on the UAP-StadiumXG. (The lanyards will retain the bolts.)



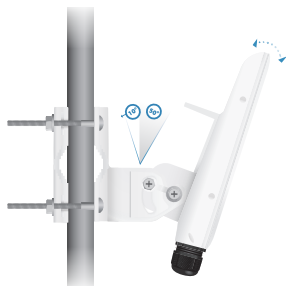
4. Lift the UAP-StadiumXG and align the *Mounting Bolts* with the slots on the *Adjustment Bracket*. Seat the *Mounting Bolts* in the slots.



5. Insert the *Elevation Lock Bolts* into the adjustment slots. Remove the lanyards and then tighten the bolts by hand.




6. Pivot the UAP-StadiumXG until it reaches the desired elevation angle (+10 to -50°). Then tighten all bolts.



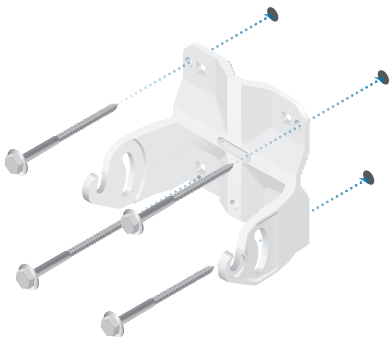
7. Proceed to *Connecting Ethernet*.

Wall Mount

To mount the UAP-StadiumXG on a wall, securely attach the *Adjustment Bracket* to the wall using the four *Lag Screws*.

 **Note:** The *Adjustment Bracket* must attach directly to a stud or other structurally stable surface.

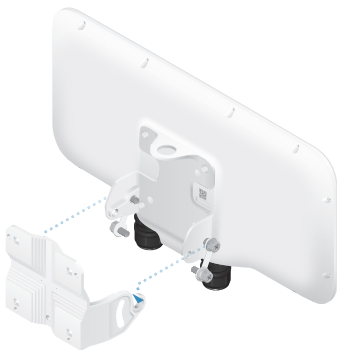
1. Locate the stud.
2. Position the *Adjustment Bracket* on the stud, ensuring at least two circular holes are centered on the stud.
3. Mark all four circular holes on the wall.
4. Drill pilot holes as necessary.
5. Secure the *Adjustment Bracket* to the wall with four fasteners.



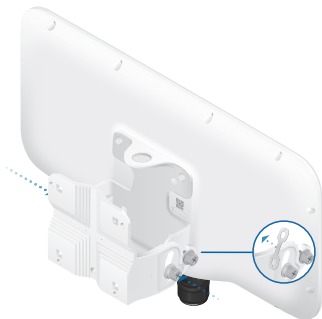
6. Loosen and remove the *Elevation Lock Bolts* on the UAP-StadiumXG. (The retaining lanyards will constrain the bolts.)



7. Lift the UAP-StadiumXG and align the *Mounting Bolts* with the slots on the *Adjustment Bracket*. Seat the *Mounting Bolts* in the slots.



8. Insert the *Elevation Lock Bolts* into the adjustment slots. Remove the lanyards and then tighten the bolts by hand.



9. Pivot the UAP-StadiumXG until it reaches the desired elevation angle (+10 to -50°). Then tighten all bolts.



10. Proceed to *Connecting Ethernet*.

Connecting Ethernet

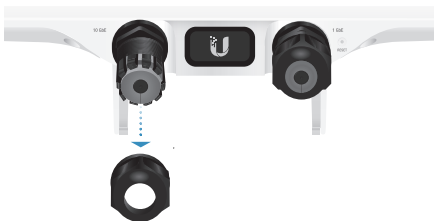


Note: If you are using TOUGH Cable, we recommend attaching the TOUGH Cable Connector(s) after you insert the cable(s) into the grommet.

1. Rotate the grommet cover counterclockwise to remove it.



2. Remove the plug from the grommet.



3. Rotate the grommet sleeve counterclockwise to remove it.

