

Chapter 6: Access Points Tab

The *Access Points* tab displays a list of managed Access Points, each displaying its name, IP address, status, number of clients connected, download/upload statistics, and transmit/receive channel.



Search Allows you to enter text you want to search for. Simply begin typing; there is no need to press **Enter**.

Page Size Allows you to determine how many results are displayed per page. Select **10, 20, 30, 40, 60, or 100**.

Name/MAC Address Displays the hostname, alias, or MAC address of the Access Point. You can click the name to get additional details on the Access Point.

IP Address Displays the IP address of the Access Point.

Status Displays the connection status information.

- **Connected** Displays that the Access Point connection is physically wired.
- **Connected (wireless)** Displays that the Access Point connection is wirelessly downlinked to a physically wired Access Point.
- **Disconnected** Displays if the Access Point is unreachable by the UniFi Controller software. Disconnected Access Points will also appear under *Access Points > Disconnected* at the top of the interface.

- **Isolated** A managed Access Point that is unable to locate its uplink.

Num Clients Displays the number of clients connected to the Access Point.

Download Displays the total size of downloads via the Access Point.

Upload Displays the total size of uploads via the Access Point.

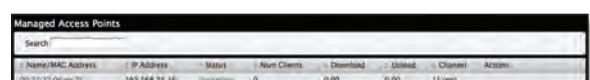
Channel Displays the transmit/receive channel being used by the Access Point.

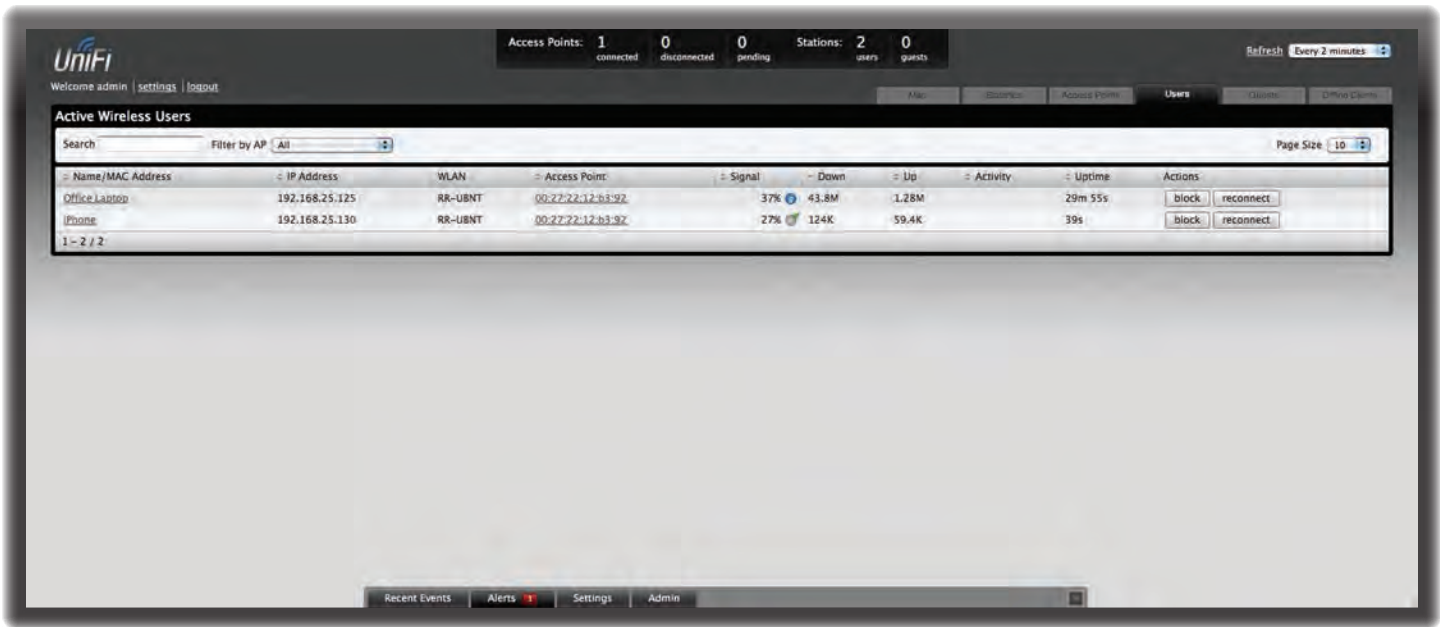
Actions Select an action button to perform the desired action:

- **Restart** Restart the selected Access Point.
- **Locate** Click to locate the Access Point on the map. The button will flash green and black until the *Locate* button is clicked again. The LED on the Access Point will flash so that you can place it in the correct location on the map. The LED will flash until the *Locate* button is clicked again.
- **Adopt** Click to adopt an Access Point that appears under *Access Points > Pending* at the top of the interface. The *Status* will appear as *Adopting* until the Access Point is connected.



- **Upgrade** If a software upgrade is available for the Access Point, click **Upgrade** to install the latest UniFi firmware on the device. The *Status* will appear as *Upgrading* until the process is complete and the Access Points reconnects to the UniFi Controller software.





Chapter 7: Users Tab

The *Users* tab displays a list of users that are connected to the primary wireless network of the Access Point.



Search Allows you to enter text you want to search for. Simply begin typing; there is no need to press **Enter**.

Filter by AP Drop-down list of all available Access Points. Select one to filter the results and display only users connected to the selected Access Point.

Page Size Allows you to determine how many results are displayed per page. Select **10, 20, 30, 40, 60, or 100**.

Name/MAC Address Displays the hostname, alias, or MAC address of the connected user. You can click the name to get additional details.

IP Address Displays the IP address assigned to the user.

WLAN Displays the name of the SSID (network name) of the wireless LAN (WLAN) that the user is connected to.

Access Point Displays the hostname or alias of the Access Point. You can click the name to get additional details on the Access Point.

Signal Displays the signal strength and type (b/g/n) from the Access Point to the client. If a lightning bolt symbol is present, the device is in power save mode. The device will return to active mode when *Down* or *Up* activity resumes.

Down Displays the total bytes of data received by the user.

Up Displays the total bytes of data sent by the user.

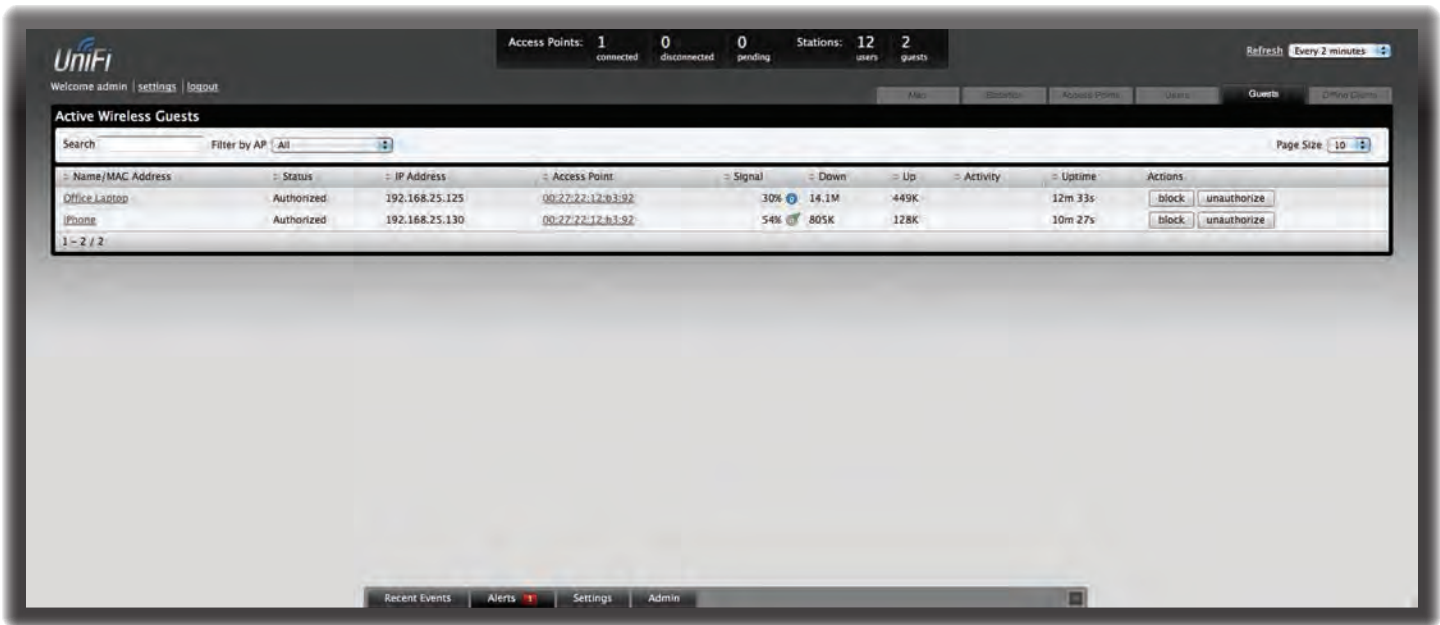
Activity Displays the level of activity for each user.

Bars	Activity Level (Bytes per second)
	Idle
■	500
■ ■	8000
■ ■ ■	64000
■ ■ ■ ■	512000
■ ■ ■ ■ ■	2048000

Uptime Displays the total time the user has been connected for this session.

Actions Click an action button to perform the appropriate action.

- **Block** Click this button to block a specific user from accessing the Access Point. This will add the client to the Blocked Device list.
- **Reconnect** Click this button to reconnect a specific user to the Access Point.



Chapter 8: Guests Tab

The *Guests* tab displays a list of users that have connected to the guest network of the Access Point.

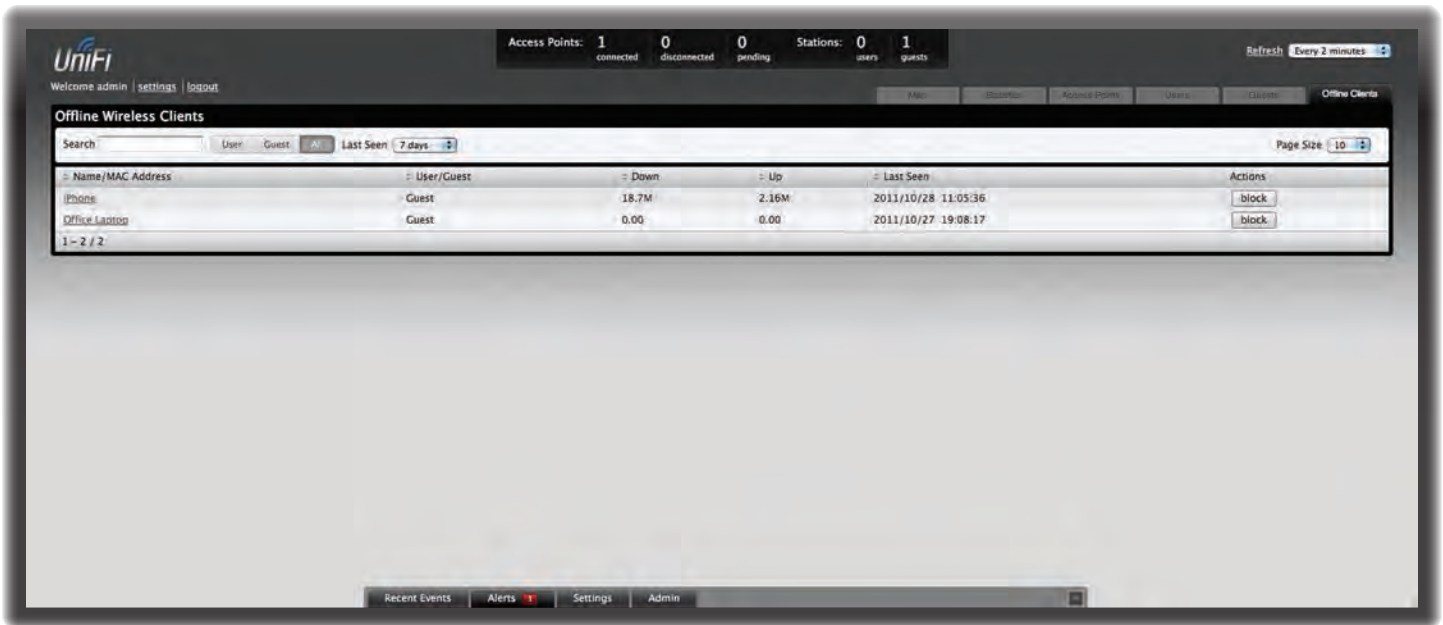


- Search** Allows you to enter text you want to search for. Simply begin typing; there is no need to press **Enter**.
- Filter by AP** Drop-down list of all available Access Points. Select one to filter the results and display only guests connected to the selected Access Point.
- Page Size** Allows you to determine how many results are displayed per page. Select **10, 20, 30, 40, 60,** or **100**.
- Name/MAC Address** Displays the hostname, alias, or MAC address of the connected guest. You can click the name to get additional details.
- Status** Indicates whether the guest is authorized or not. For authorization, guests must accept the Terms of Use if the guest portal is enabled and authenticate if authentication is enabled.
- IP Address** Displays the IP address assigned to the guest.
- Access Point** Displays the hostname or alias of the Access Point. You can click the name to get additional details on the Access Point.

- Signal** Displays the signal strength and type (b/g/n) from the Access Point to the client. If a lightning bolt symbol is present, the device is in power save mode. The device will return to active mode when *Down* or *Up* activity resumes.
- Down** Displays the total bytes of data received by the guest.
- Up** Displays the total bytes of data sent by the guest.
- Activity** Displays the level of activity for each guest.

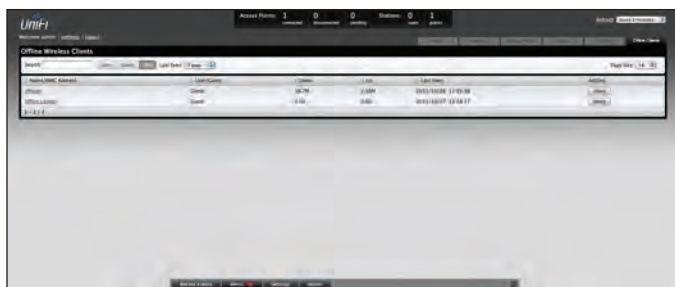
Bars	Activity Level (Bytes per second)
	Idle
■	500
■■	8000
■■■	64000
■■■■	512000
■■■■■	2048000

- Uptime** Displays the total time the guest has been connected for this session.
- Actions** Click an action button to perform the appropriate action.
 - **Block** Click this button to block a specific guest from accessing the Access Point.
 - **Reconnect** Click this button to reconnect a specific guest to the Access Point.
 - **Authorize** When a guest is in a pending state, authorization can be granted here manually.
 - **Unauthorize** Removes authorization of wireless guest access and disconnects the client.



Chapter 9: Offline Clients Tab

The *Offline Clients* tab displays a list of users that have connected to the guest or primary network of the Access Point at some time during the period specified.



Search Allows you to enter text you want to search for. Simply begin typing; there is no need to press **Enter**.

- **Users** Select if you only want users displayed.
- **Guests** Select if you only want guests displayed.
- **All** Select to show all users and guests.

Last Seen Drop-down list that allows you to filter the results on the page based on the time the user was last seen. Select **1 day**, **3 days**, **7 days**, **2 weeks**, **1 month**, **2 months**, or **1 year**.

Page Size Allows you to determine how many results are displayed per page. Select **10**, **20**, **30**, **40**, **60**, or **100**.

Name/MAC Address Displays the hostname, alias, or MAC address of the connected user. You can click the name to get additional details.

User/Guest Indicates whether the user is connected to the primary or guest network.

Down Displays the total bytes of data received by the user.

Up Displays the total bytes of data sent by the user.

Actions Click an action button to perform the appropriate action.

- **Block** Click this button to block a specific user from accessing the Access Point.

Chapter 10: Access Point Details

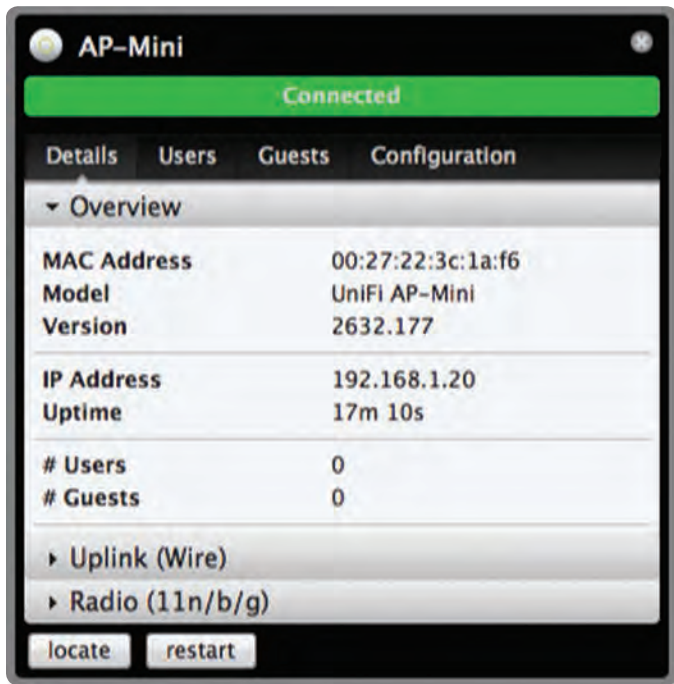
UniFi Access Points connect to the UniFi Controller software either by Ethernet, denoted as *Connected*, or by a wireless connection, denoted as *Connected (wireless)*. Based on connection type, options under each tab vary.

The upper part of the window has four clickable tabs. The bottom of the window has a *Locate* and *Restart* button. Use the **Locate** button to flash the LED on the Access Point and flash the Access Point icon on the map. Use the **Restart** button to restart the Access Point. The four tabs include *Details*, *Users*, *Guests*, and *Configuration*.

Details

Displays details about the Access Point. Click **Overview** to display the device specifics, connection details, uptime, and user statistics.

Overview



MAC address Displays the MAC address of the Access Point.

Model Displays the model information.

Version Displays the version of software used on the Access Point.

IP address Displays the IP address of the Access Point.

Uptime Displays the amount of time the Access Point has been running without interruption.

Users Displays the number of users connected to the primary network.

Guests Displays the number of users connected to the guest network.

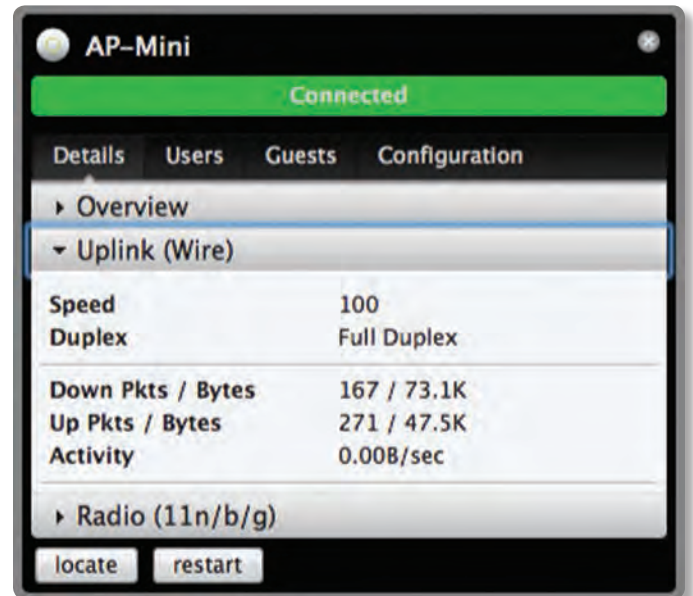
Uplink (Wireless)

Displays details on a wirelessly connected Access Point including the Uplink Access Point (by specified name or MAC address), signal strength to the Uplink Access Point, TX Rate, RX Rate, Down Pkts / Bytes, Up Pkts / Bytes, and Activity. See **“Wireless Uplinks” on page 31** to find, select, and connect to a wireless Access Point.



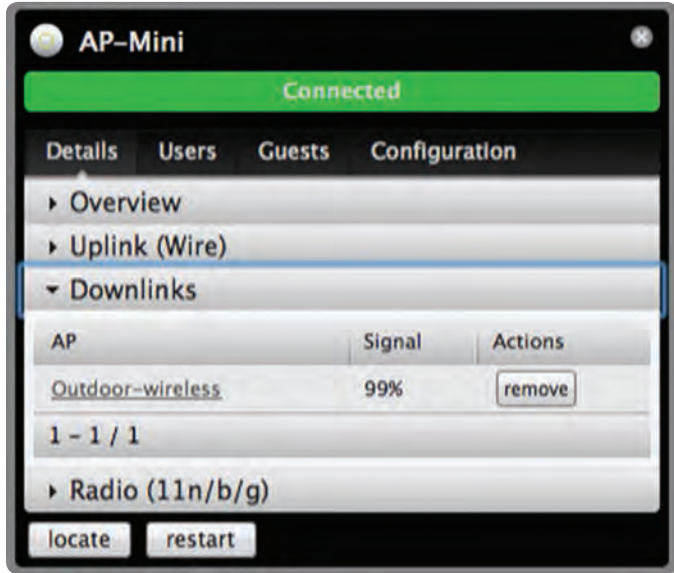
Uplink (Wire)

Displays details on a wired Access Point including the connection speed, duplex type, Down Pkts / Bytes in K/M, Up Pkts / Bytes in K/M, and Activity in B/sec.



Downlinks

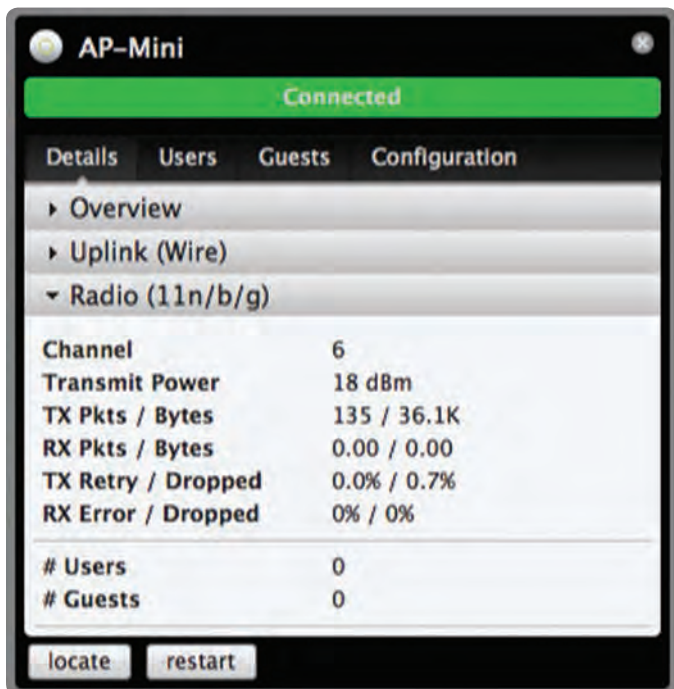
Displays which wireless Access Points are currently connected to the wired Access Point. Includes details such as the downlink Access Point (by specified name or MAC address), signal strength, and the option to remove the wireless Access Point from the wired Access Point by clicking *remove*.



Note: Downlinks will only be visible under the *Details* tab when a wireless Access Point is connected.

Radio (11n/b/g)

Click **Radio (11n/b/g)** to display the channel and transmit/receive statistics.



Channel Displays the wireless channel being used.

Transmit Power Displays the EIRP in dBm.



Note: If the device has an external antenna, you can place the mouse over the icon for additional details.

TX Pkts / Bytes Displays the number of packets and total bytes transmitted by the Access Point.

RX Pkts / Bytes Displays the number of packets and total bytes received by the Access Point.

TX Retry / Dropped Displays the percentage of packets transmitted that needed to be resent and the percentage of packets that were dropped.

RX Error / Dropped Displays the percentage of packets received that needed to be resent and the percentage of packets that were dropped.

Users Displays the number of users connected to the primary network.

Guests Displays the number of users connected to the guest network.

Users



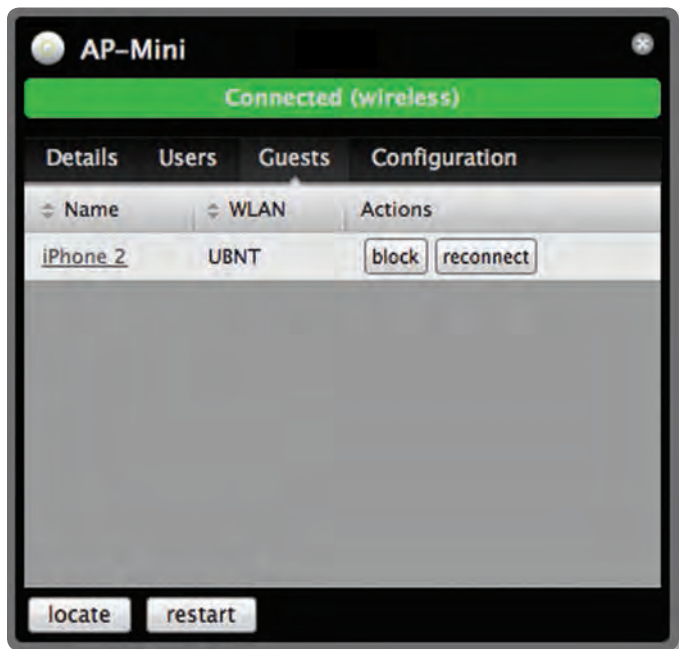
Name Displays the name (MAC address if not defined) of users connected to the primary network of the selected Access Point. You can click the links under *Name* to display additional details of each user (see **“User/Guest Details” on page 34** for more information).

WLAN Displays the name of the SSID (network name) of the wireless LAN (WLAN) that the user is connected to.

Actions Select from one of the following actions:

- **Block** Click this button to block a specific user from accessing the Access Point. This will add the client to the Blocked Device list.
- **Reconnect** Click this button to reconnect a specific user to the Access Point.

Guests



Name Displays the name (MAC address if not defined) of users connected to the guest network of the selected Access Point. You can click the links under *Name* to display additional details of each user (see [“User/Guest Details” on page 34](#) for more information).

WLAN Displays the name of the SSID (network name) of the wireless LAN (WLAN) that the user is connected to.

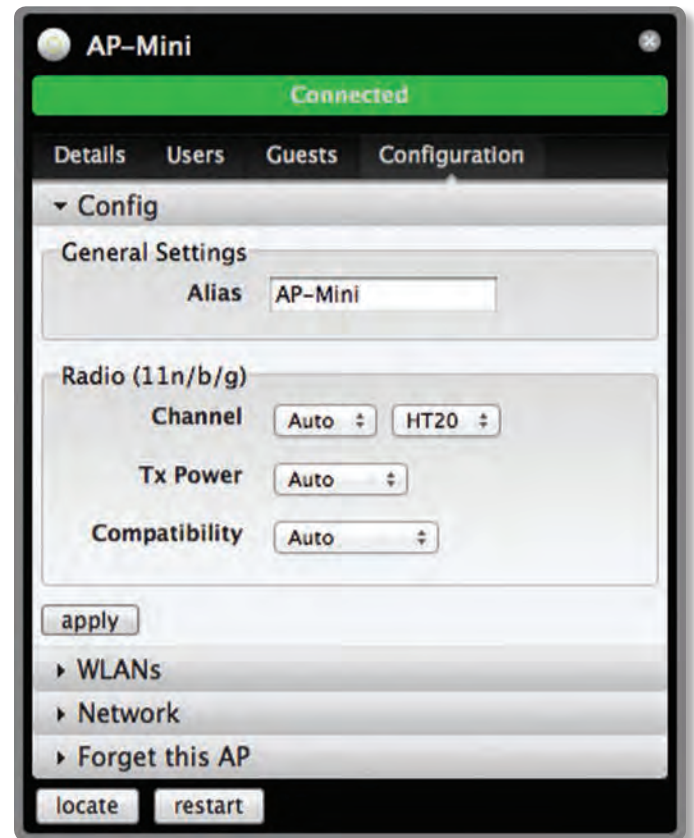
Actions Select from one of the following actions:

- **Block** Click this button to block a specific user from accessing the Access Point. This will add the client to the Blocked Device list.
- **Reconnect** Click this button to reconnect a specific user to the Access Point.

Configuration

Allows you to change device configuration settings. Click the **Apply** button to commit any changes.

Config



General Settings

Alias Allows you to name the device.

Radio (11n/b/g)

Channel Select a channel or leave the default auto setting. You can also use the default HT20 for 20 MHz operation or HT40 for 40 MHz operation.

Tx Power By default the transmit power is set to *Auto*. You can also manually select *High*, *Medium*, *Low* or *Custom*.

- **High** The highest TX power we can deliver.
- **Low** The lowest TX power.
- **Medium** Halfway in between High and Low.
- **Custom** Full custom setting. If the AP is using an external antenna, the *Antenna Gain* field will appear, allowing you to specify the gain of the attached antenna. After applying the settings, go to **Transmit Power** under *Detail > Radio (11n/g/b)*, which always shows EIRP, and place the mouse over it to display how it's calculated.

Compatibility Selects the wireless compatibility mode. By default this is set to auto. Choose one of the following:

- **Auto** Supports wireless b/g/n standards.
- **11n/11g only** Only supports wireless-n and wireless-g devices.
- **11n only** Only supports wireless-n devices.
- **11g only** Only supports wireless-g devices.

WLANs

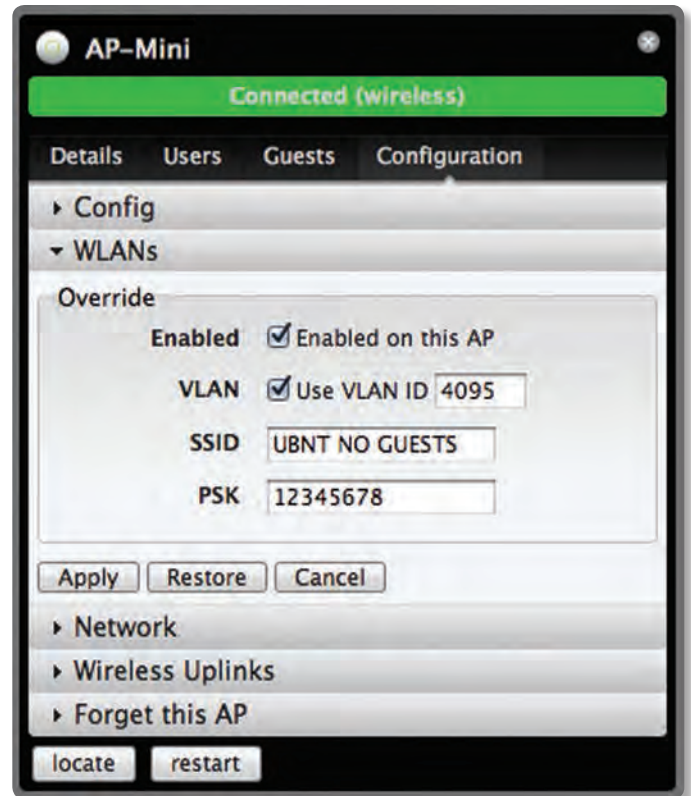
Allows the deployment of different WLANs on different Access Points.



Name Displays the name of the SSID (network name) of the wireless LAN (WLAN) that is available for the user to connect to.

Overrides Displays SSID override information applied to the wireless LAN (WLAN) using the *Actions > Override* option.

Actions Click **Override** to enable a VLAN, set the VLAN ID, and enter the SSID override name to apply to the wireless LAN (WLAN).



Enabled Select to enable or clear to disable override settings on the WLAN.

VLAN Select to enable VLAN or clear to disable VLAN.

VLAN ID The VLAN ID is a unique value assigned to each VLAN at a single device; every VLAN ID represents a different Virtual Local Area Network. A value between 2 and 4095 may be entered. For example, in a larger deployment where there are multiple buildings, it's possible that a different VLAN ID is used in each building while still on the same corporate network.

SSID Enter the SSID override name to apply to the wireless LAN (WLAN).

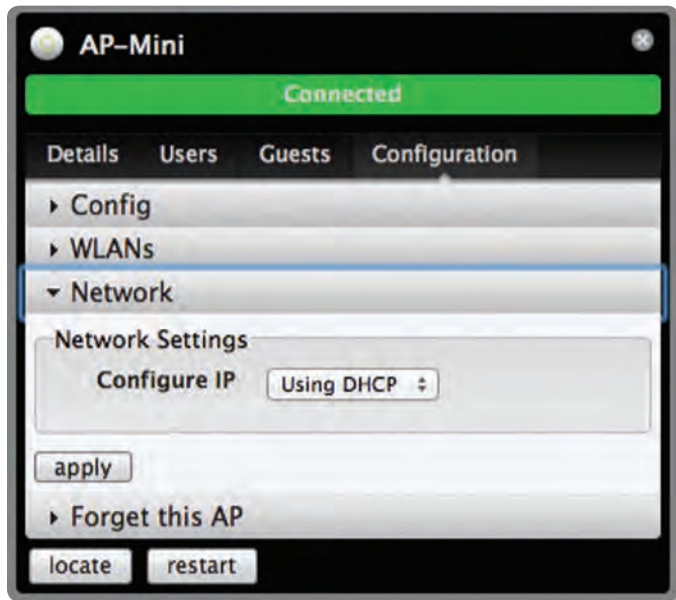
PSK If the WPA-Personal security option has been applied to the WLAN under *Settings > Wireless Networks*, the Pre-Shared Key (PSK) for the SSID specified will automatically appear in this field.

Click **Apply** to save any changes that you have made. Click **Restore** to remove any overrides that were applied to the selected WLAN. Click **Cancel** to prevent application of any changes you have made.

Network

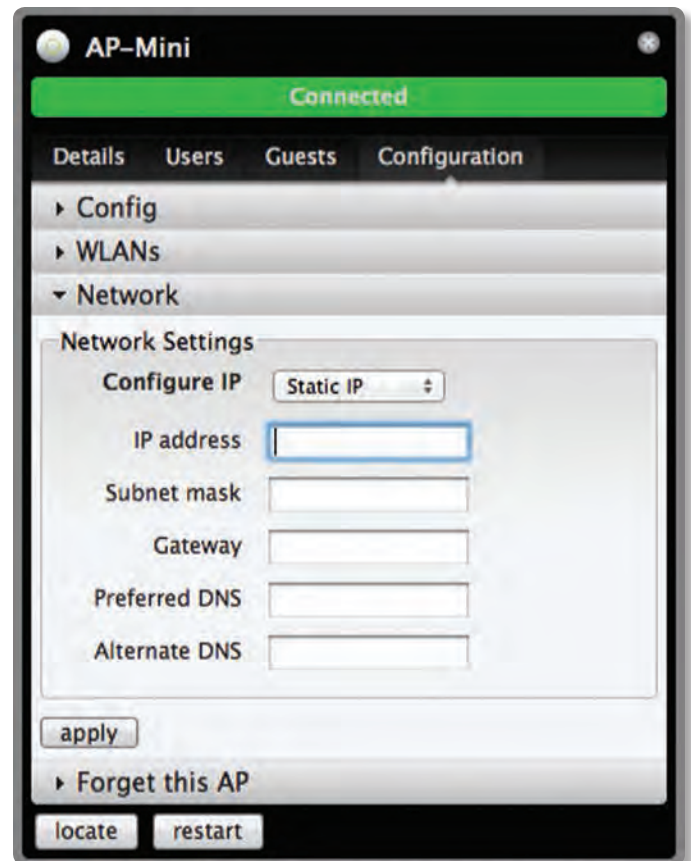
The Access Point can be configured to obtain an IP address automatically or configured with a static IP address.

Network Settings



Configure IP Select between *Using DHCP* or *Static IP*:

- **Using DHCP** Choose this option to obtain the IP address, Gateway, and DNS address dynamically from the external DHCP server.

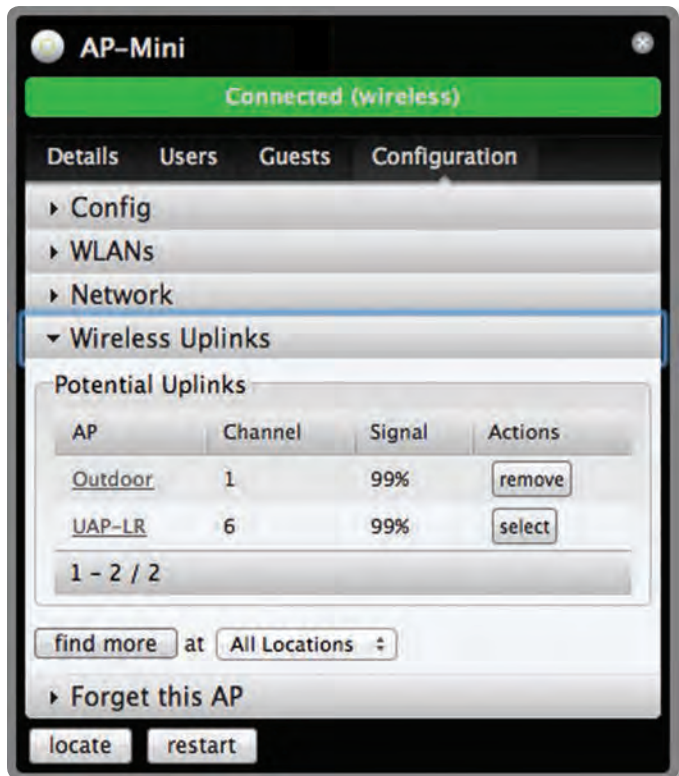


- **Static IP** Choose this option to assign the static IP address, Subnet mask, Gateway, Preferred DNS, and Alternate DNS for the Access Point.
 - **IP address** Enter the IP address for the Access Point.
 - **Subnet mask** Enter the subnet mask for the Access Point.
 - **Gateway** Enter the gateway address.
 - **Preferred DNS** Enter a primary DNS address.
 - **Alternate DNS** Enter a secondary DNS address.

Apply Click **apply** to save any changes that you have made.

Wireless Uplinks

When an Access Point is not connected by a wire, *Wireless Uplinks* lists potential uplink Access Points that can be selected to establish a wireless connection.



AP Displays the specified name (or MAC address) of the potential Uplink Access Point.

Channel Displays the channel being used for wireless communication.

Signal Displays the signal level.

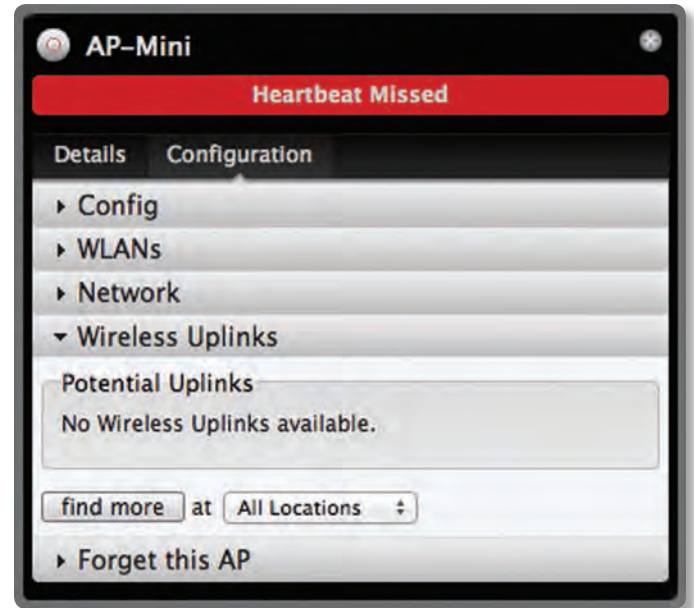
Actions

- **Remove** Click **remove** to disconnect the wireless Access Point from the wired Access Point.
- **Select** Click **select** to connect the wireless Access Point to the wired Access Point.

Find More Click to manually instruct the Access Point to search for any available potential uplinks. You can conduct the search across all locations (maps), or select a single location from the drop-down menu.

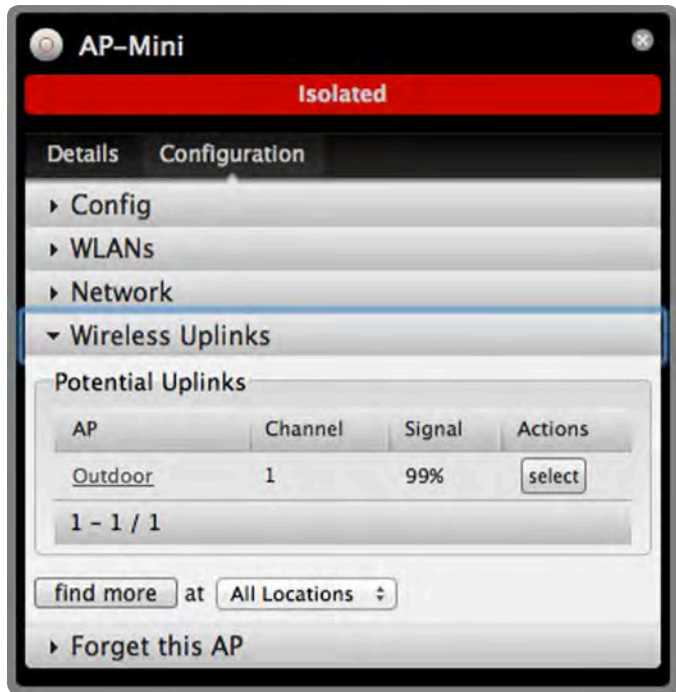
Access Point - Heartbeat Missed


When a wired Access Point is disconnected from the router, its state will initially change to *Heartbeat Missed*, followed by *Isolated*.



Access Point - Isolated

When an Access Point is in an *Isolated* state, a connection to the UniFi Controller software can be reestablished by reconnecting the Access Point to the router or by establishing a wireless uplink to a wired Access Point. See **“Wireless Uplinks” on page 31** to find, select, and connect to a wireless Access Point.



 **Note:** When in an *Isolated* state, the Access Point icon will change to red/orange on the *Map* tab.



The LED on the actual device will be steady green with occasional flashing. This Access Point doesn't provide any wireless service.

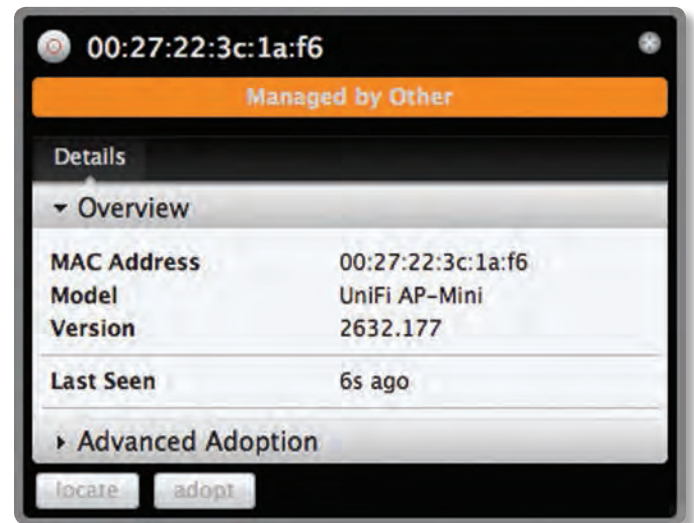


Note: Do not use the *Forget this AP* option when the Access Point is in an *Isolated* state. If you do, the only way to make the Access Point accessible from the UniFi Controller is to take it down and connect by wire.

Access Point - Managed by Other

When an Access Point is in *Managed by Other* state, this indicates that the Access Point is not in the default state but it is not controlled by the UniFi Controller.

Overview



MAC address Displays the MAC address of the Access Point.

Model Displays the model information.

Version Displays the version of software used on the Access Point.

Last Seen Displays the amount of time that has passed since the Access Point was last seen.

Advanced Adoption



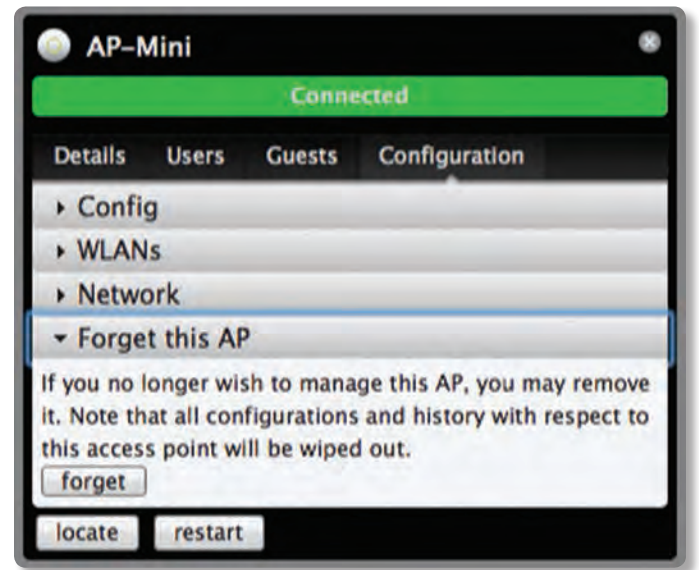
IP The IP address and SSH port of the Access Point are populated here.

Username Enter the SSH Username for management access.

Password Enter the SSH Password for management access.

Inform URL The URL will be populated but you may need to verify the accuracy as the system may have multiple interfaces.

Forget this AP



Forget Click to remove the Access Point from management by the UniFi Controller software and to restore it to factory default settings.



Note: Use caution when clicking *forget*. This will restore the Access Point to factory settings when in a *Connected* state. Do not use the *Forget* option when the Access Point is in an *Isolated* state. If you do, the only way to make the Access Point accessible from the UniFi Controller is to take it down and connect by wire.

Chapter 11: User/Guest Details

The User and Guest hyperlinks bring up the *User/Guest Details* window. There are four clickable tabs at the top of the window and two buttons located on the bottom of the window. The buttons are accessible from any of the tabs and perform the following actions:

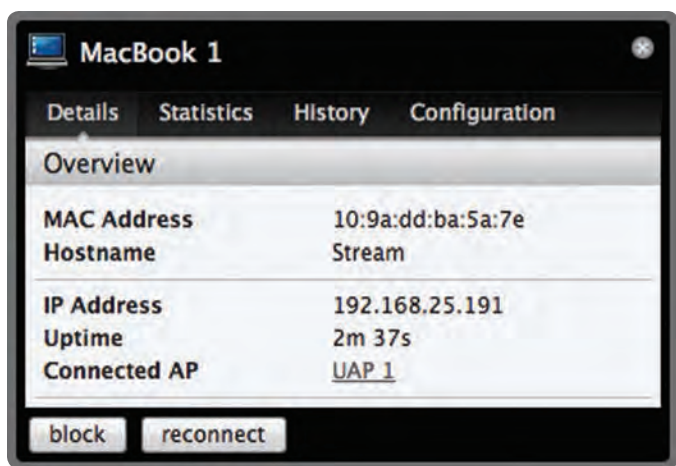
Block The *block* button allows you to block the selected user from accessing the network.

Reconnect Allows you to reconnect a user that has been blocked previously.

The four tabs contain the following information:

Details

Overview



MAC address Displays the MAC address of the Access Point.

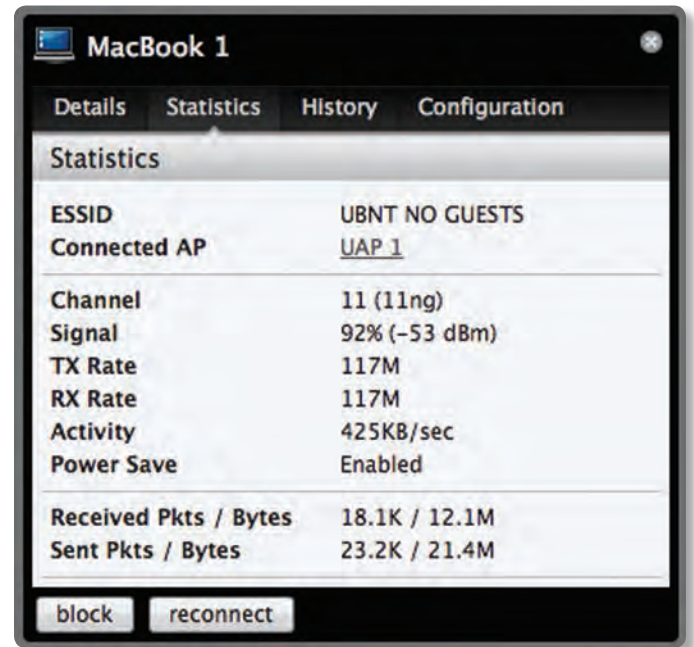
Hostname Displays the name (if defined).

IP address Displays the IP address of the Access Point.

Uptime Displays the amount of time the Access Point has been running without interruption.

Connected AP Displays the name or MAC address of the Access Point this user is connected to.

Statistics



ESSID Displays the wireless network name (SSID) of the network that the user is connected to.

Connected AP Displays the MAC address or name of the Access Point the user is connected to.

Channel Displays the channel being used for wireless communication.

Signal Displays the signal level.

TX Rate Displays the transmit rate.

RX Rate Displays the reception rate.

Activity Displays user activity.

Power Save Indicates whether power saving is enabled.

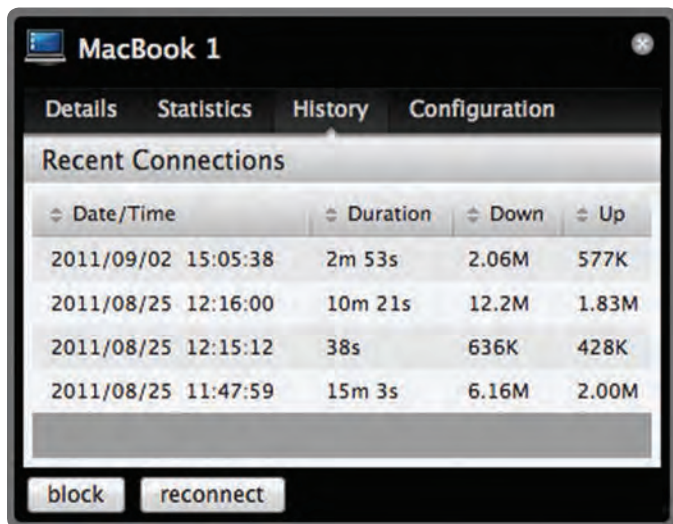
Received Pkts / Bytes Displays the number of packets and total bytes received by the user.

Sent Pkts / Bytes Displays the number of packets and total bytes transmitted by the user.



Note: The *Statistics* tab will only appear when the User/Guest is connected.

History



Date/Time Displays the date and time the user connected to the Access Point.

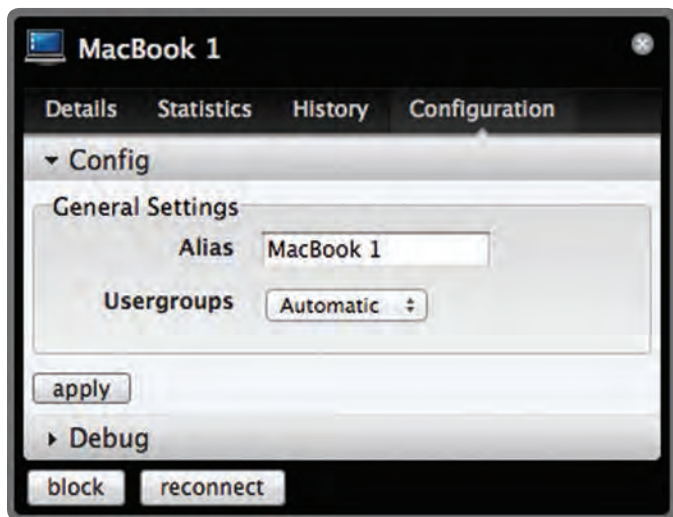
Duration Displays the time duration that the user was connected to the Access Point.

Down Displays how many bytes were downloaded by the user during the session.

Up Displays how many bytes were uploaded by the user during the session.

Configuration

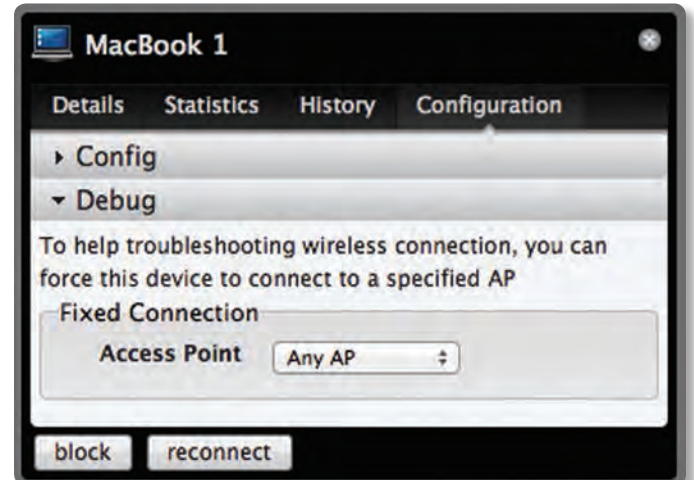
Config



Alias Allows you to enter a name for the user. Click **apply** to save your name change.

Usergroups Allows you to select the User Group to assign to the User/Guest. User Groups are set up under the *Settings* tab > *User Groups* option (see **“Settings > User Groups” on page 12** for information on setting up User Groups).

Debug



Debug Allows you to force a device to connect to a specific Access Point.



Chapter 12: Hotspot Manager

Hotspot Manager includes four main tabs when accessed by the UniFi Controller admin account. These tabs include *Wireless Guests*, *Payments/Transactions*, *Vouchers*, and *Operator Accounts*.

Operator accounts that are created by the admin will have access to three tabs when they log in. These tabs include *Wireless Guests*, *Payments/Transactions*, and *Vouchers*.

Wireless Guests

Lists the Hotspot’s currently active wireless guests. Includes the keyword *Search* box and *Show guests within* drop-down selections (options include *last 24 hours*, *3 days*, *7 days*, *2 weeks*, *30 days*, and *120 days*).



Name/MAC Address Displays the connected guest’s device name or MAC address.

Package Displays the type of package that was purchased (if applicable).

Amount Displays amount paid for access (if applicable).

Authorized By Displays authorization method or none.

Download Displays the total number of bytes downloaded by the guest.

Upload Displays the total number of bytes uploaded by the guest.

Status Displays the remaining session time for the guest.

Actions

- **Disconnect** Allows you to immediately disconnect a guest.
- **Extend** Allows you to extend a guest’s session for an additional 24 hours every time you click this button. If you click it three times, you will extend the guest access for three more days.

Payments/Transactions

Lists the Hotspot’s payments and transactions. Includes the keyword *Search* box and *Show guests within* drop-down selections (options include *last 24 hours*, *3 days*, *7 days*, *2 weeks*, *30 days*, and *120 days*).



Time Displays the time and date of the transaction.

Last Name Displays the user’s last name.

First Name Displays the user’s first name.

Package Displays the package description.

Amount Displays the amount of the transaction.

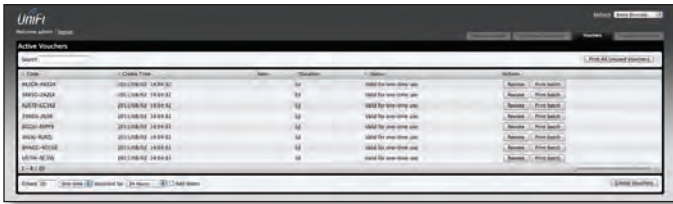
Extra Info If the user paid via PayPal, the *Extra Info* field displays the email address associated with the PayPal account. If the user paid via credit card, the *Extra Info* field will display the type of credit card and the last four digits of the credit card used.

Status Displays the status of the transaction.

Actions Allows you to refund a customer if necessary by clicking the *Refund* button.

Vouchers

Allows the creation of vouchers including a distributable code, duration values, and use restrictions.



Search Enter keywords in the *Search* box to find a specific voucher based on *Code*, *Create Time*, or *Note* values.

Print all Unused Vouchers Click **Print All Unused Vouchers** to send a page to your printer with voucher code and validity details.

Code Displays a list of active voucher codes.

Create Time Displays the time and date the voucher was created.

Note Displays any notes that were added using the *Add Notes* option during voucher creation.

Duration Displays the duration of minutes, hours, or days that the voucher enables the user to access the Internet.

Status Indicates whether it is a single-use or multi-use voucher.

Actions

- **Revoke** Immediately deactivates the selected voucher.
- **Print Batch** Prints the selected voucher.

Active Voucher Page Slider Adjust the slider from left to right to view all *Active Vouchers*.

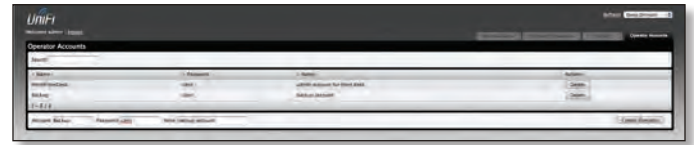
Create Vouchers Includes the following:

- **Create** Specify the number of vouchers to create.
- **vouchers** Choose whether the voucher can be used *One-time* or for *Multi-use*.
- **for** Choose how long the voucher is valid (options include *8 hours*, *24 hours*, *2 days*, *3 days*, *4 days*, *7 days* or *User-defined*).
- **Add Notes** Select to add a note specific to the batch of vouchers created.

Click **Create Vouchers** to create the vouchers as specified.

Operator Accounts

Allows the creation of *Operator Accounts* that can log in to *Hotspot Manager* to manage wireless guests, payments/transactions, and vouchers.



- **Search** Enter keywords in the *Search* box to find a specific operator account based on *Name*, *Password*, or *Notes* values.
- **Actions** Click **Delete** to remove an operator.
- **Account** Enter a name for the operator. The *Account* can only be A-Z, a-z, or 0-9. No spaces are allowed.
- **Password** Enter a password for the operator. The *Password* has to start with A-Z, a-z, or 0-9. The other characters can only be printable ASCII characters
- **Note** If desired, enter a note to identify or describe the operator.
- **Create Operator** Click **Create Operator** to create the operator account as specified. To test the operator account, log out of the UniFi Controller software and log in using the operator credentials. Only the *Wireless Guests*, *Payments/Transactions*, and *Vouchers* tabs will appear.

Appendix A: Portal Customization

Overview

With *Portal Customization*, the UniFi Controller software allows complete branding of a portal implementation, allowing you to “white label” your wireless internet service as if you had developed it yourself.

In order to provide the maximum flexibility in your branding effort, the UniFi Controller software provides total access to the portal directory on the system in which it is installed.

This open architecture allows you to include unlimited content while keeping development simple through the use of plain .html (hand code or use any editor of your choice). Testing is simple and immediate by reloading changes from any browser.

Enabling Portal Customization

By default, *Portal Customization* is disabled in all *Guest Portal* implementations. See **“Settings > Guest Control” on page 9** for more information on enabling the *Guest Portal* for the following authentication and landing page options: *No authentication, Simple Password, Hotspot*.

To enable *Portal Customization*, perform the following steps:

1. Go to **Settings** and select **Guest Control**.



2. Make sure that the Guest Portal is enabled and select an authentication method.



3. Select **Enable portal customization** and click **Apply**.



Viewing the Default Portal

Once *Guest Portal > Portal Customization* is enabled, connect to the *Guest Network* SSID as shown below, depending on your platform.

Windows

1. Go to **Connect to Network**.
 - **Windows 7** Right-click the *Network* icon.
 - **Windows Vista** Go to **Start > Connect To**.
 - **Windows XP** Right-click the *Wireless Network* icon in the *System Tray* (lower right corner of the screen) and then click **View Available Wireless Networks**.
2. Select the *Guest Network* SSID and click **Connect**.
3. Depending on the security type applied to the network, enter the security key or password. Click **OK** or **Connect**.
4. Launch your Web browser and you will be directed to the default portal page for the authentication type configured on the *Guest Portal* (see **“Settings > Guest Control” on page 9** for screenshots of default portal pages by authentication method).

Mac

1. Click the *AirPort* icon in the menu bar (top left side of the screen).
2. Select the *Guest Network* SSID and click **Connect**.
3. Depending on the security type applied to the network, enter the security key or password. Click **OK**.
4. Once connected, the *AirPort* icon will change from gray to solid black. The number of black lines indicates the signal strength.
5. Launch your Web browser and you will be directed to the default portal page for the authentication type configured on the *Guest Portal* (see **“Settings > Guest Control” on page 9** for screenshots of default portal pages by authentication method).

Setup

The html and css files are located on the system that the UniFi Controller software has been installed on. The file paths are in the following locations:

Mac:

/Applications/UniFi.app/Contents/Resources/data/portal

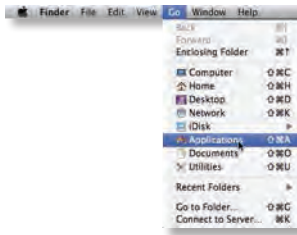
Windows:

<Drive_Letter>:\Users<Username>\Ubiquiti UniFi\data\portal

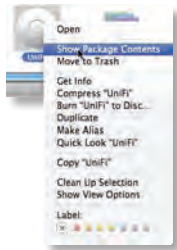
For specific instructions on accessing the files, refer to the specific operating system:

Mac

1. Navigate to **Go > Applications**.



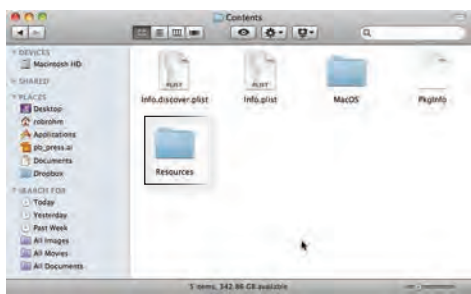
2. Control-click the **UniFi** application and select **Show Package Contents**.



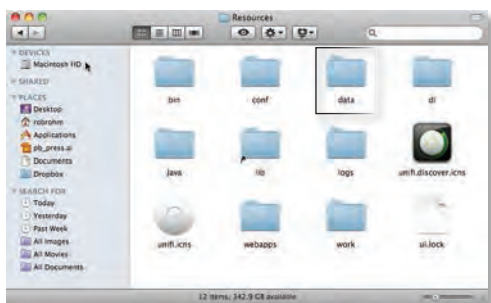
3. Double-click the **Contents** folder to open it.



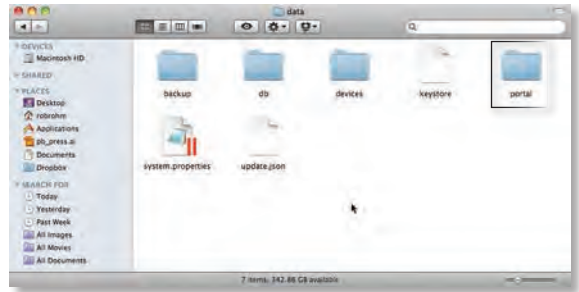
4. Double-click the **Resources** folder to open it.



5. Double-click the **data** folder to open it.



6. Double-click the **portal** folder to open it.



Windows

The Windows files are located in the following location:
<Drive_Letter>\Users<Username>\Ubiquiti UniFi\data\portal

Customizable Default Files

The following default customizable html and css files can be found in the *portal* folder:

- **index.html** The main landing page.
- **payment.html** Used for credit card information submission. Requires https and also serves as an example of an additional .html page.
- **fail.html** Page displayed when there is an error handling a guest login.
- **reset-min.css**
- **styles.css**

Another important customizable file is located in the *bundle* folder. The *messages.properties* file can be edited with a text editor such as TextEdit. This defines package costs, length of access, package titles, and how the charge will appear on a customer's credit card. Error messages are also defined here.



Additional details on portal customization can be found in our forum at:
<http://www.ubnt.com/forum/showpost.php?p=205385>

Appendix B: UniFi Discovery Utility

Overview

The Ubiquiti UniFi Discovery Utility includes tools that allow the discovery and management of UniFi Enterprise WiFi System Access Points. It is installed automatically as part of the UniFi Controller software installation process. See **“Software Installation” on page 5** for more information.

Launching the UniFi Discovery Utility

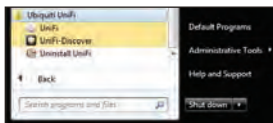
Mac Users

From the Finder, click **Go > Applications** and double-click the *UniFi-Discover* icon.



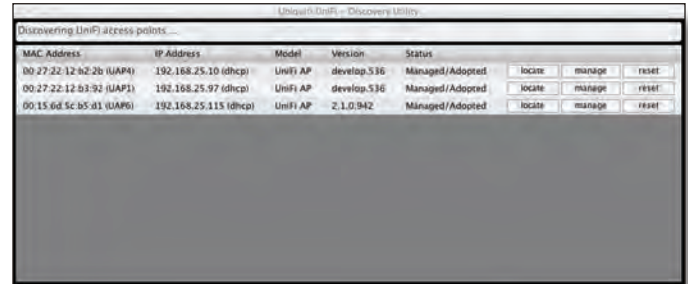
PC Users

Go to **Start > All Programs > Ubiquiti UniFi** and double-click the *UniFi-Discover* icon.



UniFi Discovery Utility Interface

Upon launch, the UniFi Discovery Utility listens to Layer-2 broadcast/multicast beacons from UniFi Access Points in both a factory default state and an unmanaged state (adopted but unable to contact the UniFi Controller software).



MAC Address Displays the MAC address and alias (in parentheses if specified — see **“Config” on page 28** for details on specifying an alias) of the Access Point.

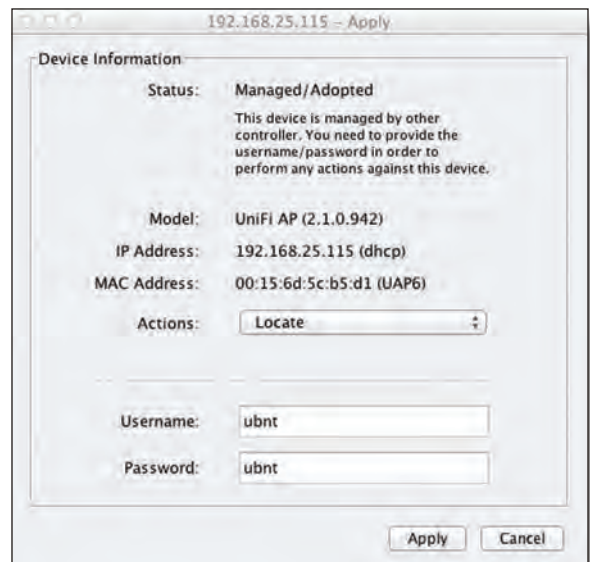
IP Address Displays the IP address of the Access Point and the method used by the Access Point to obtain an IP address (in parentheses as *DHCP* or *Static*).

Model Displays the model name of the UniFi WiFi System Access Point.

Version The software version installed on the Access Point is displayed here.

Status Displays the current status of the Access Point. Possible statuses include: *Pending*, *Managed/Adopted*, *Login Failed*, and *IP Unreachable*.

Locate Click to locate the Access Point. The following window appears:



The LED on the Access Point will flash so that it can be identified from other Access Points. If the Access Point's status requires the entry of a username and password, enter them before clicking *Apply*.

Manage Click to set the inform URL, allowing the Access Point to be managed by an instance of the UniFi Controller software running in a NOC or in the cloud (see **“Network Topology Requirements” on page 1** for a visual representation of this configuration). The following window appears:

Enter the URL, port, and path to the instance of the UniFi Controller software that the Access Point is to be managed by. If the Access Point's status requires the entry of a username and password, enter them before clicking *Apply*.

Reset Click to restore the Access Point to factory default settings. The following window appears:

If the Access Point's status requires the entry of a username and password, enter them before clicking *Apply*.

Reboot Click to reboot Access Point. The following window appears:

If the Access Point's status requires the entry of a username and password, enter them before clicking *Apply*.

Appendix C: Specifications

UniFi AP-Mini (UAP-Mini) Specifications	
Dimensions	13.5 x 13.5 x 2.6 cm
Weight	113 g (134 g with mounting kits)
Ports	Ethernet (Auto MDX, autosensing 10/100 Mbps)
Buttons	Reset
Antennas	1 Integrated
Wi-Fi Standards	802.11 b/g/n*
Power Method	Passive Power over Ethernet (12-24V)
Power Supply	5V 2A PoE Adapter included
Max. Power Consumption	3W
Max. TX Power	18 dBm
BSSID	Up to four per radio
Power Save	Supported
Wireless Security	WEP, WPA-PSK, WPA-TKIP, WPA2 AES, 802.11i
Certifications	CE, FCC, IC
Mounting	Wall/Ceiling (Kits included)
Operating Temperature	-10 to 70°C (14 to 158° F)
Operating Humidity	5 - 80% Condensing
Advanced Traffic Management	
VLAN	802.1Q
Advanced QoS	Per-user rate limiting
Guest Traffic Isolation	Supported
WMM	Voice, video, best effort, and background
Concurrent Clients	100+
Supported Data Rates (Mbps)	
Frequency (MHz)	
802.11n	MCS0 - MCS7 (6.5 Mbps to 150 Mbps), HT 20/40
802.11b	1, 2, 5.5, 11
802.11g	6, 9, 12, 18, 24, 36, 48, 54

* 2.4GHz

Appendix D: Safety Notices

1. Read, follow, and keep these instructions.
2. Heed all warnings.
3. Only use attachments/accessories specified by the manufacturer.



WARNING: Do not use this product in location that can be submerged by water.



WARNING: Avoid using this product during an electrical storm. There may be a remote risk of electric shock from lightning.

Electrical Safety Information

1. Compliance is required with respect to voltage, frequency, and current requirements indicated on the manufacturer's label. Connection to a different power source than those specified may result in improper operation, damage to the equipment or pose a fire hazard if the limitations are not followed.
2. There are no operator serviceable parts inside this equipment. Service should be provided only by a qualified service technician.
3. This equipment is provided with a detachable power cord which has an integral safety ground wire intended for connection to a grounded safety outlet.
 - a. Do not substitute the power cord with one that is not the provided approved type. Never use an adapter plug to connect to a 2-wire outlet as this will defeat the continuity of the grounding wire.
 - b. The equipment requires the use of the ground wire as a part of the safety certification, modification or misuse can provide a shock hazard that can result in serious injury or death.
 - c. Contact a qualified electrician or the manufacturer if there are questions about the installation prior to connecting the equipment.
 - d. Protective earthing is provided by Listed AC adapter. Building installation shall provide appropriate short-circuit backup protection.
 - e. Protective bonding must be installed in accordance with local national wiring rules and regulations.

Appendix E: Warranty

General Warranty

UBIQUITI NETWORKS, Inc (“UBIQUITI NETWORKS”) represents and warrants that the Products furnished hereunder shall be free from defects in material and workmanship for a period of one (1) year from the date of shipment by UBIQUITI NETWORKS under normal use and operation. UBIQUITI NETWORKS sole and exclusive obligation under the foregoing warranty shall be to repair or replace, at its option, any defective Product that fails during the warranty period. The expense of removal and reinstallation of any item is not included in this warranty.

The foregoing warranty is exclusive and in lieu of all other warranties, express or implied, including the implied warranties of merchantability and fitness for a particular purpose and any warranties arising from a course of dealing, usage or trade practice with respect to the products. Repair or replacement in the manner provided herein shall be the sole and exclusive remedy of Buyer for breach of warranty and shall constitute fulfillment of all liabilities of UBIQUITI NETWORKS with respect to the quality and performance of the Products. UBIQUITI NETWORKS reserves the right to inspect all defective Products (which must be returned by Buyer to UBIQUITI NETWORKS factory freight prepaid).

No Products will be accepted for replacement or repair without obtaining a Return Materials Authorization (RMA) number from UBIQUITI NETWORKS. Products returned without an RMA number will not be processed and will be returned to Buyer freight collect. UBIQUITI NETWORKS shall have no obligation to make repairs or replacement necessitated by catastrophe, fault, negligence, misuse, abuse, or accident by Buyer, Buyer’s customers or any other parties. The warranty period of any repaired or replaced. Product shall not extend beyond its original term.

Warranty Conditions

The foregoing warranty shall apply only if:

- (I) The Product has not been subjected to misuse, neglect or unusual physical, electrical or electromagnetic stress, or some other type of accident.
- (II) No modification, alteration or addition has been made to the Product by persons other than UBIQUITI NETWORKS or UBIQUITI NETWORKS’S authorized representatives or otherwise approved by UBIQUITI NETWORKS.
- (III) The Product has been properly installed and used at all times in accordance, and in all material respects, with the applicable Product documentation.
- (IV) All Ethernet cabling runs use CAT5 (or above) shielded cabling.

Disclaimer

UBIQUITI NETWORKS does not warrant that the operation of the products is error-free or that operation will be uninterrupted. In no event shall UBIQUITI NETWORKS be responsible for damages or claims of any nature or description relating to system performance, including coverage, buyer’s selection of products for buyer’s application and/or failure of products to meet government or regulatory requirements.

Returns

In the unlikely event a defect occurs, please work through the dealer or distributor from which this product was purchased.

Appendix F: Compliance Information

Installer Compliance Responsibility

Devices must be professionally installed and it is the professional installer's responsibility to make sure the device is operated within local country regulatory requirements.

FCC

Changes or modifications not expressly approved by the party responsible for compliance could void the user's authority to operate the equipment.

This device complies with Part 15 of the FCC Rules. Operation is subject to the following two conditions:

1. this device may not cause harmful interference, and
2. this device must accept any interference received, including interference that may cause undesired operation.

NOTE: This equipment has been tested and found to comply with the limits for a Class B digital device, pursuant to part 15 of the FCC Rules. These limits are designed to provide reasonable protection against harmful interference in a residential installation. This equipment generates, uses and can radiate radio frequency energy and, if not installed and used in accordance with the instructions, may cause harmful interference to radio communications. However, there is no guarantee that interference will not occur in a particular installation. If this equipment does cause harmful interference to radio or television reception, which can be determined by turning the equipment off and on, the user is encouraged to try to correct the interference by one or more of the following measures:

- Reorient or relocate the receiving antenna.
- Increase the separation between the equipment and receiver.
- Connect the equipment into an outlet on a circuit different from that to which the receiver is connected.
- Consult the dealer or an experienced radio/TV technician for help.

Industry Canada

This Class B digital apparatus complies with Canadian ICES-003.

To reduce potential radio interference to other users, the antenna type and its gain should be so chosen that the equivalent isotropically radiated power (e.i.r.p.) is not more than that permitted for successful communication.

This device complies with Industry Canada licence-exempt RSS standard(s). Operation is subject to the following two conditions:

1. this device may not cause interference, and
2. this device must accept any interference, including interference that may cause undesired operation of the device.

Cet appareil numérique de la classe B est conforme à la norme NMB-003 Canada.

Pour réduire le risque d'interférence aux autres utilisateurs, le type d'antenne et son gain doivent être choisis de façon que la puissance isotrope rayonnée équivalente (PIRE) ne dépasse pas ce qui est nécessaire pour une communication réussie.

Cet appareil est conforme à la norme RSS Industrie Canada exempts de licence norme(s). Son fonctionnement est soumis aux deux conditions suivantes:

1. cet appareil ne peut pas provoquer d'interférences et
2. cet appareil doit accepter toute interférence, y compris les interférences qui peuvent causer un mauvais fonctionnement du dispositif.

RF Exposure Warning

The transceiver described here emits radio frequency energy. Although the power level is low, the concentrated energy from a directional antenna may pose a health hazard. Do not allow people to come closer than 20 cm to the antenna when the transmitter is operating.

Additional information on RF exposure is available on the Internet at www.fcc.gov/oet/info/documents/bulletins

L'émetteur-récepteur décrit ici émet de l'énergie de fréquence radio. Bien que le niveau de puissance est faible, l'énergie concentrée à partir d'une antenne directionnelle peut présenter un danger pour la santé. Ne pas permettre aux gens de se rapprocher de 20 cm à l'antenne lorsque l'émetteur est en marche.

Des renseignements supplémentaires sur l'exposition aux RF est disponible sur Internet à

www.fcc.gov/oet/info documents/bulletins

CE Marking

CE marking on this product represents the product is in compliance with all directives that are applicable to it.

Alert sign! Follows CE marking

Alert sign must be indicated if a restriction on use applied to the product and it must follow the CE marking.



NB-Identification number (if there is any)

Notified body number is indicated if it is involved in the conformity assessment procedure.



Please check the CE mark on the product label to find out which notified body was involved during assessment.

RoHS/WEEE Compliance Statement**English**

European Directive 2002/96/EC requires that the equipment bearing this symbol on the product and/or its packaging must not be disposed of with unsorted municipal waste. The symbol indicates that this product should be disposed of separately from regular household waste streams. It is your responsibility to dispose of this and other electric and electronic equipment via designated collection facilities appointed by the government or local authorities. Correct disposal and recycling will help prevent potential negative consequences to the environment and human health. For more detailed information about the disposal of your old equipment, please contact your local authorities, waste disposal service, or the shop where you purchased the product.

Deutsch

Die Europäische Richtlinie 2002/96/EC verlangt, dass technische Ausrüstung, die direkt am Gerät und/oder an der Verpackung mit diesem Symbol versehen ist, nicht zusammen mit unsortiertem Gemeindeabfall entsorgt werden darf. Das Symbol weist darauf hin, dass das Produkt von regulärem Haushaltmüll getrennt entsorgt werden sollte. Es liegt in Ihrer Verantwortung, dieses Gerät und andere elektrische und elektronische Geräte über die dafür zuständigen und von der Regierung oder örtlichen Behörden dazu bestimmten Sammelstellen zu entsorgen. Ordnungsgemäßes Entsorgen und Recyceln trägt dazu bei, potentielle negative Folgen für Umwelt und die menschliche Gesundheit zu vermeiden. Wenn Sie weitere Informationen zur Entsorgung Ihrer Altgeräte benötigen, wenden Sie sich bitte an die örtlichen Behörden oder städtischen Entsorgungsdienste oder an den Händler, bei dem Sie das Produkt erworben haben.

Español

La Directiva 2002/96/CE de la UE exige que los equipos que lleven este símbolo en el propio aparato y/o en su embalaje no deben eliminarse junto con otros residuos urbanos no seleccionados. El símbolo indica que el producto en cuestión debe separarse de los residuos domésticos convencionales con vistas a su eliminación. Es responsabilidad suya desechar este y cualesquiera otros aparatos eléctricos y electrónicos a través de los puntos de recogida que ponen a su disposición el gobierno y las autoridades locales. Al desechar y reciclar correctamente estos aparatos estará contribuyendo a evitar posibles consecuencias negativas para el medio ambiente y la salud de las personas. Si desea obtener información más detallada sobre la eliminación segura de su aparato usado, consulte a las autoridades locales, al servicio de recogida y eliminación de residuos de su zona o pregunte en la tienda donde adquirió el producto.

Français

La directive européenne 2002/96/CE exige que l'équipement sur lequel est apposé ce symbole sur le produit et/ou son emballage ne soit pas jeté avec les autres ordures ménagères. Ce symbole indique que le produit doit être éliminé dans un circuit distinct de celui pour les déchets des ménages. Il est de votre responsabilité de jeter ce matériel ainsi que tout autre matériel électrique ou électronique par les moyens de collecte indiqués par le gouvernement et les pouvoirs publics des collectivités territoriales. L'élimination et le recyclage en bonne et due forme ont pour but de lutter contre l'impact néfaste potentiel de ce type de produits sur l'environnement et la santé publique. Pour plus d'informations sur le mode d'élimination de votre ancien équipement, veuillez prendre contact avec les pouvoirs publics locaux, le service de traitement des déchets, ou l'endroit où vous avez acheté le produit.

Italiano

La direttiva europea 2002/96/EC richiede che le apparecchiature contrassegnate con questo simbolo sul prodotto e/o sull'imballaggio non siano smaltite insieme ai rifiuti urbani non differenziati. Il simbolo indica che questo prodotto non deve essere smaltito insieme ai normali rifiuti domestici. È responsabilità del proprietario smaltire sia questi prodotti sia le altre apparecchiature elettriche ed elettroniche mediante le specifiche strutture di raccolta indicate dal governo o dagli enti pubblici locali. Il corretto smaltimento ed il riciclaggio aiuteranno a prevenire conseguenze potenzialmente negative per l'ambiente e per la salute dell'essere umano. Per ricevere informazioni più dettagliate circa lo smaltimento delle vecchie apparecchiature in Vostro possesso, Vi invitiamo a contattare gli enti pubblici di competenza, il servizio di smaltimento rifiuti o il negozio nel quale avete acquistato il prodotto.

Appendix G: Declaration of Conformity

Česky [Czech]	UBIQUITI NETWORKS tímto prohlašuje, že tento UBIQUITI NETWORKS device, je ve shodě se základními požadavky a dalšími požadavky nmi ustanovenými směrnicí 1999/5/EC.	Malti [Maltese]	Hawnhekk, UBIQUITI NETWORKS, jiddikjara li dan UBIQUITI NETWORKS device, jikkonforma mal- ti ijjiet essenzjali u ma provvedimenti o rajn relevanti li hemm fid-Dirrettiva 1999/5/EC.
Dansk [Danish]	Undertegnede UBIQUITI NETWORKS erklærer herved, at følgende udstyr UBIQUITI NETWORKS device, overholder de væsentlige krav og øvrige relevante krav i direktiv 1999/5/EF.	Norsk [Norwegian]	UBIQUITI NETWORKS erklærer herved at utstyret UBIQUITI NETWORKS device, er i samsvar med de grunnleggende krav og øvrige relevante krav i direktiv 1999/5/EF.
Nederlands [Dutch]	Hierbij verklaart UBIQUITI NETWORKS dat het toestel UBIQUITI NETWORKS device, in overeenstemming is met de essentiële eisen en de andere relevante bepalingen van richtlijn 1999/5/EG. Bij deze verklaart UBIQUITI NETWORKS dat deze UBIQUITI NETWORKS device, voldoet aan de essentiële eisen en aan de overige relevante bepalingen van Richtlijn 1999/5/EC.	Slovensky [Slovak]	UBIQUITI NETWORKS týmto vyhlasuje, že UBIQUITI NETWORKS device, spĺa základné požiadavky a v etky príslušné ustanovenia Smernice 1999/5/ES.
English	Hereby, UBIQUITI NETWORKS, declares that this UBIQUITI NETWORKS device, is in compliance with the essential requirements and other relevant provisions of Directive 1999/5/EC.	Svenska [Swedish]	Härmed intygar UBIQUITI NETWORKS att denna UBIQUITI NETWORKS device, står i överensstämmelse med de väsentliga egenskapskrav och övriga relevanta bestämmelser som framgår av direktiv 1999/5/EG.
Eesti [Estonian]	Käesolevaga kinnitab UBIQUITI NETWORKS seadme UBIQUITI NETWORKS device, vastavust direktiivi 1999/5/EÜ põhinõuetele ja nimetatud direktiivist tulenevatele teistele asjakohastele sätetele.	Español [Spanish]	Por medio de la presente UBIQUITI NETWORKS declara que el UBIQUITI NETWORKS device, cumple con los requisitos esenciales y cualesquiera otras disposiciones aplicables o exigibles de la Directiva 1999/5/CE.
Suomi [Finnish]	UBIQUITI NETWORKS vakuuttaa täten että UBIQUITI NETWORKS device, tyypinen laite on direktiivin 1999/5/EY oleellisten vaatimusten ja sitä koskevien direktiivin muiden ehtojen mukainen.	Polski [Polish]	Niniejszym, firma UBIQUITI NETWORKS o wiadcza, że produkt serii UBIQUITI NETWORKS device, spełnia zasadnicze wymagania i inne istotne postanowienia Dyrektywy 1999/5/EC.
Français [French]	Par la présente UBIQUITI NETWORKS déclare que l'appareil UBIQUITI NETWORKS device est conforme aux exigences essentielles et aux autres dispositions pertinentes de la directive 1999/5/CE. Par la présente, UBIQUITI NETWORKS déclare que ce UBIQUITI NETWORKS device, est conforme aux exigences essentielles et aux autres dispositions de la directive 1999/5/CE qui lui sont applicables.	Português [Portuguese]	UBIQUITI NETWORKS declara que este UBIQUITI NETWORKS device, está conforme com os requisitos essenciais e outras disposições da Directiva 1999/5/CE.
Deutsch [German]	Hiermit erklärt UBIQUITI NETWORKS, dass sich diese UBIQUITI NETWORKS device, in Übereinstimmung mit den grundlegenden Anforderungen und den anderen relevanten Vorschriften der Richtlinie 1999/5/EG befindet“. (BMW) Hiermit erklärt UBIQUITI NETWORKS die Übereinstimmung des Gerätes UBIQUITI NETWORKS device, mit den grundlegenden Anforderungen und den anderen relevanten Festlegungen der Richtlinie 1999/5/EG. (Wien)	Română [Romanian]	Prin prezenta, declarăm că acest produs este în conformitate cu cerințele esențiale și cu alte prevederi relevante din Directiva 1999/5/CE.
Ελληνική [Greek]	ΜΕ ΤΗΝ ΠΑΡΟΥΣΑ UBIQUITI NETWORKS ΔΗΛΩΝΕΙ ΟΤΙ UBIQUITI NETWORKS device, ΣΥΜΜΟΡΦΩΝΕΤΑΙ ΠΡΟΣ ΤΙΣ ΟΥΣΙΩΔΕΙΣ ΑΠΑΙΤΗΣΕΙΣ ΚΑΙ ΤΙΣ ΛΟΙΠΕΣ ΣΧΕΤΙΚΕΣ ΔΙΑΤΑΞΕΙΣ ΤΗΣ ΟΔΗΓΙΑΣ 1999/5/ΕΚ.		
Magyar [Hungarian]	Alulírott, UBIQUITI NETWORKS nyilatkozom, hogy a UBIQUITI NETWORKS device, megfelel a vonatkozó alapvető követelményeknek és az 1999/5/EC irányelv egyéb előírásainak.		
Íslenska [Icelandic]	Hér með l sír UBIQUITI NETWORKS yfir ví a UBIQUITI NETWORKS device, er í samræmi við grunnkröfur og a rar kröfur, sem ger ar eru í tilskipun 1999/5/EC.		
Italiano [Italian]	Con la presente UBIQUITI NETWORKS dichiara che questo UBIQUITI NETWORKS device, è conforme ai requisiti essenziali ed alle altre disposizioni pertinenti stabilite dalla direttiva 1999/5/CE.		
Latviski [Latvian]	Ar o UBIQUITI NETWORKS deklar , ka UBIQUITI NETWORKS device, atbilst Direkt vas 1999/5/EK b tiskaj m pras b m un citiem ar to saist tajiem noteikumiem.		
Lietuvi [Lithuanian]	UBIQUITI NETWORKS deklaruoja, kad šis UBIQUITI NETWORKS įrenginys atitinka esminius reikalavimus ir kitas 1999/5/EB Direktyvos nuostatas.		

Appendix H: Contact Information

Ubiquiti Networks Support

Ubiquiti Support Engineers are located in the U.S. and Europe and are dedicated to helping customers resolve software, hardware compatibility, or field issues as quickly as possible. We strive to respond to support inquiries within a 24 hour period.

Email: support@ubnt.com

Phone: 408-942-1153 (9 a.m. - 5 p.m. PST)

Online Resources

Wiki Page: www.ubnt.com/wiki

Support Forum: www.ubnt.com/forum

Downloads: www.ubnt.com/support/downloads



91 E. Tasman Drive
San Jose, CA 95134

www.ubnt.com

© 2011 Ubiquiti Networks, Inc. All rights reserved. UniFi is a trademark of Ubiquiti Networks, Inc. Google Maps™ is a trademark of Google, Inc. PayPal is a trademark of PayPal, Inc.