



# UA-G2-Pro

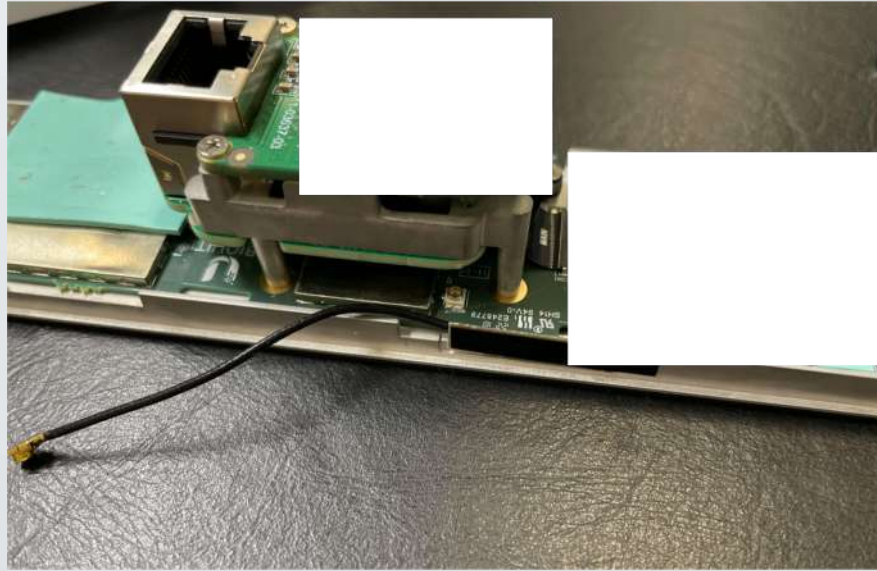
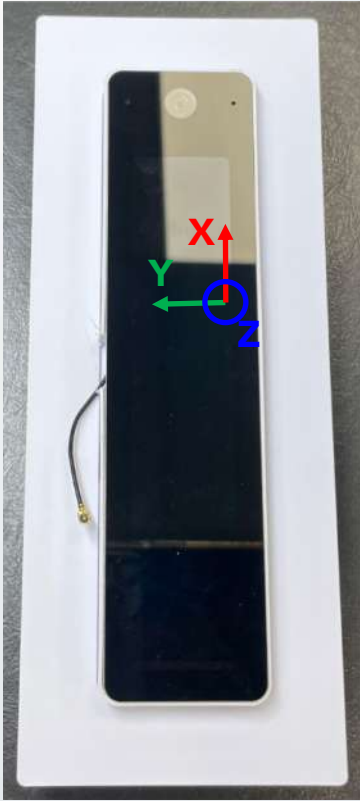
# [UA-G2-Pro] Antenna Overview



Antenna	BT
Working Freq. (MHz)	2400-2500
Type	PIFA
Polarization	Mix
Efficiency (%)	30
Peak Realized Gain (dBi)	1
Material	FR-4
Connector	IPEX-1L

- Efficiency parameter present the maximum value over working frequency.
- Peak realized gain present the maximum round up value over working frequency.

# [UA-G2-Pro] Measurement Set Up

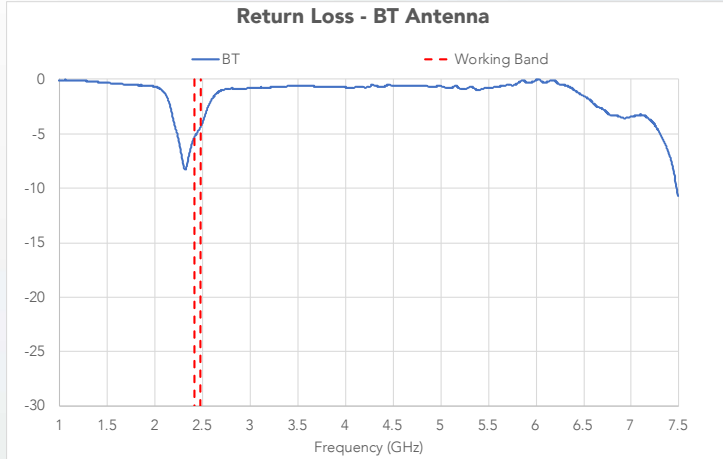


- Product orientation definition as left-hand photo shown, same as the chamber coordinate.
- Antenna cable through pass side cover, and then feed in VNA signal directly.

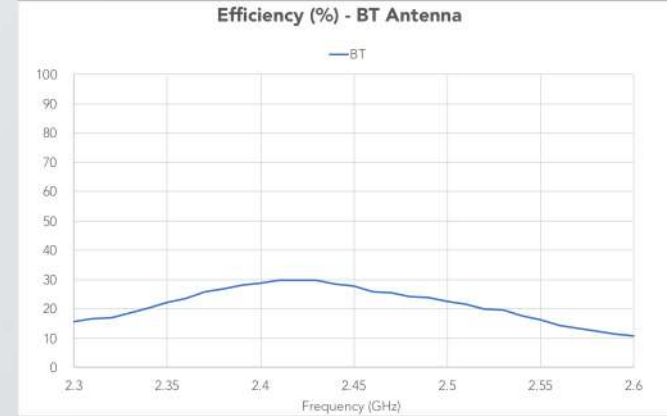


# [UA-G2-Pro] BT Antenna Performance

## Scattering parameter



## Radiated characteristic



# [UA-G2-Pro] BT Radiation Pattern

Orientation reference

