



UA-G2-Mini

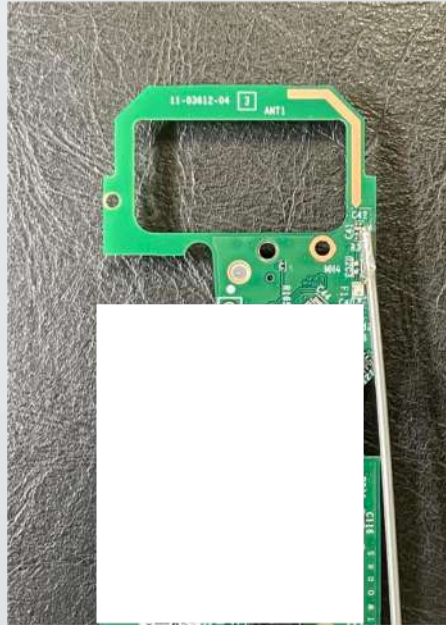
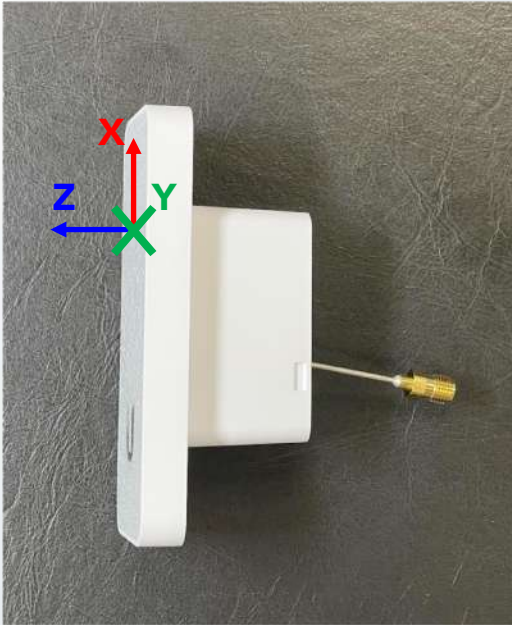
[UA-G2-Mini] Antenna Overview



Antenna	BT
Working Freq. (MHz)	2400-2500
Type	PIFA
Polarization	Mix
Efficiency (%)	55
Peak Realized Gain (dBi)	4
Material	On board trace
Connector	NA

- Efficiency parameter present the maximum value over working frequency.
- Peak realized gain present the maximum round up value over working frequency.

[UA-G2-Mini] Measurement Setup

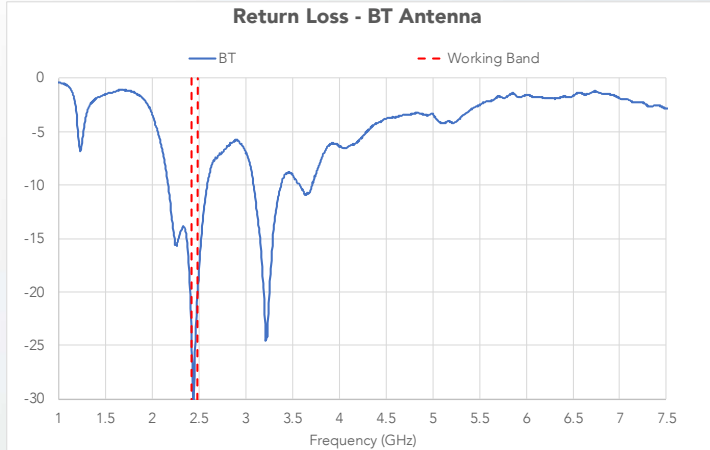


- Product orientation definition as left-hand photo shown, the measurement set up is same as the chamber coordinate.
- To feed in copper tube by removing 0 ohm resistance, and then connect VNA for signal input.

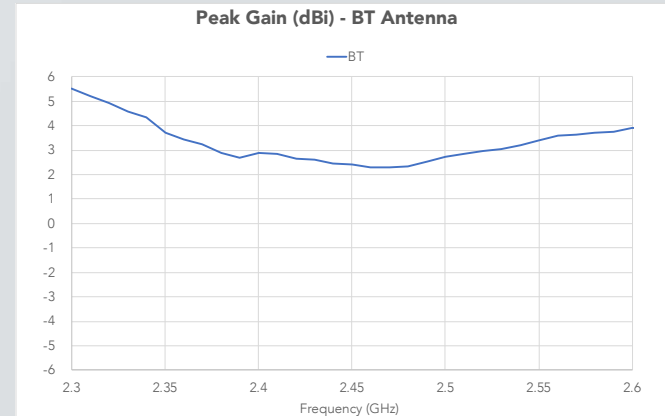
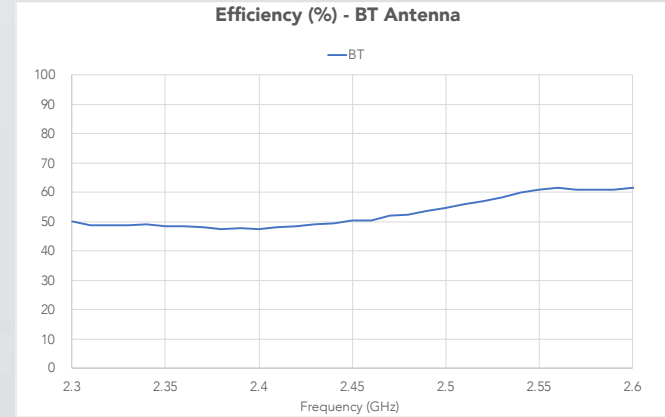


[UA-G2-Mini] Antenna Performance

Scattering parameter



Radiated characteristic



[UA-G2-Mini] Radiation Pattern

Orientation reference

