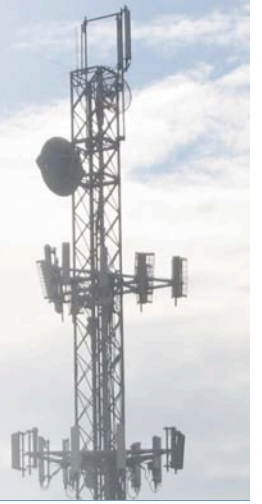




# SuperRangeXpress

34mm Long Range Xpress Card

## OEM INTEGRATION GUIDE



# XTREMERange9

## TECHNICAL SPECIFICATIONS

CARD INFORMATION							
Wireless Chipset	Atheros 5006						
Radio Operation	IEEE 802.11a/b/g with CCK/OFDM at BPSK/QPSK/16QAM/64QAM						
Interface	PCI-Xpress Card, 34mm form factor						
Operation Voltage	3.3VDC						
Antenna Ports	Single MMCX for External Antenna (internal Antenna also integrated)						
Temperature Range	-40C to +80C						
Security	WPA, WPA2, AES-CCM & TKIP Encryption, 802.1x, 64/128/152bit WEP						
Data Rates	6Mbps, 9Mbps, 12Mbps, 24Mbps, 36Mbps, 48Mbps, 54Mbps						
RoHS Compliance	YES						
REGULATORY INFORMATION							
Wireless Modular Approvals	FCC , Industry Canada, CE (100mW limited)						
OPERATING FREQUENCY 2412MHz-2462MHz							
2.4GHz TX SPECIFICATIONS			2.4GHz RX SPECIFICATIONS				
802.11b	DataRate	TX Power	Tolerance	802.11b	DataRate	Sensitivity	Tolerance
	1Mbps	24 dBm	+/-1dB		1Mbps	-96 dBm	+/-1dB
	2Mbps	24 dBm	+/-1dB		2Mbps	-95 dBm	+/-1dB
	5.5Mbps	24 dBm	+/-1dB		5.5Mbps	-94 dBm	+/-1dB
802.11g OFDM	11Mbps	24 dBm	+/-1dB	802.11g OFDM	11Mbps	-91 dBm	+/-1dB
	6Mbps	24 dBm	+/-1dB		6Mbps	-94 dBm	+/-1dB
	9Mbps	24 dBm	+/-1dB		9Mbps	-93 dBm	+/-1dB
	12Mbps	24 dBm	+/-1dB		12Mbps	-91 dBm	+/-1dB
	18Mbps	24 dBm	+/-1dB		18Mbps	-90 dBm	+/-1dB
	24Mbps	24 dBm	+/-1dB		24Mbps	-86 dBm	+/-1dB
	36Mbps	23 dBm	+/-1dB		36Mbps	-83 dBm	+/-1dB
	48Mbps	22 dBm	+/-1dB		48Mbps	-77 dBm	+/-1dB
	54Mbps	20 dBm	+/-1dB		54Mbps	-74 dBm	+/-1dB
	OPERATING FREQUENCY 5745MHz-5825MHz						
5GHz TX SPECIFICATIONS			5GHz RX SPECIFICATIONS				
802.11a OFDM	6Mbps	19 dBm	+/-1dB	802.11a OFDM	6Mbps	-94 dBm	+/-1dB
	9Mbps	19 dBm	+/-1dB		9Mbps	-93 dBm	+/-1dB
	12Mbps	19 dBm	+/-1dB		12Mbps	-91 dBm	+/-1dB
	18Mbps	19 dBm	+/-1dB		18Mbps	-90 dBm	+/-1dB
	24Mbps	19 dBm	+/-1dB		24Mbps	-86 dBm	+/-1dB
	36Mbps	18 dBm	+/-1dB		36Mbps	-83 dBm	+/-1dB
	48Mbps	16 dBm	+/-1dB		48Mbps	-77 dBm	+/-1dB
	54Mbps	15 dBm	+/-1dB		54Mbps	-74 dBm	+/-1dB
CURRENT CONSUMPTION INFORMATION							
TX CURRENT CONSUMPTION			RX CURRENT CONSUMPTION				
802.11b	DataRate	TX Power	Tolerance	802.11b	DataRate	Sensitivity	Tolerance
	1Mbps	0.80 A	+/-100 mA		1Mbps	350 mA	+/-100 mA
	2Mbps	0.80 A	+/-100 mA		2Mbps	350 mA	+/-100 mA
	5.5Mbps	0.80 A	+/-100 mA		5.5Mbps	350 mA	+/-100 mA
11g/a	11Mbps	0.80 A	+/-100 mA	11g/a	11Mbps	350 mA	+/-100 mA
	6-24Mbps	0.80 A	+/-100 mA		6-24Mbps	350 mA	+/-100 mA
	36Mbps	0.75 A	+/-100 mA		36Mbps	350 mA	+/-100 mA
	48Mbps	0.70 A	+/-100 mA		48Mbps	350 mA	+/-100 mA
54Mbps	0.60 A	+/-100 mA	54Mbps	350 mA	+/-100 mA		
RANGE PERFORMANCE							
Indoor (Antenna Dependent):	Up to 150meters						
Outdoor (Antenna Dependent):	Over 1km						
DRIVER INFORMATION							
Operating System Support	Linux, WindowsXP, Windows2000						
Advanced Mobility / QuickHandoff	WindowsXP/2000 Utility with Enhanced Mobility Driver from Ubiquiti						
Cisco Support	CCX 4.0 Supported Driver/Utility also available from Ubiquiti						
For help with special driver support, please e-mail support@ubnt.com							
LAPTOP ANTENNA INFORMATION							
Antenna Dimensions	5.1 in x 0.83 in						
Cable	18 in with MMCX plug						
Antenna Type / Polarization	Omni-directional / Vertically Polarized						
Antenna Gain	5dBi						
Mounting Type	Adjustable Laptop Clip Mount and Sticker Mount Included						