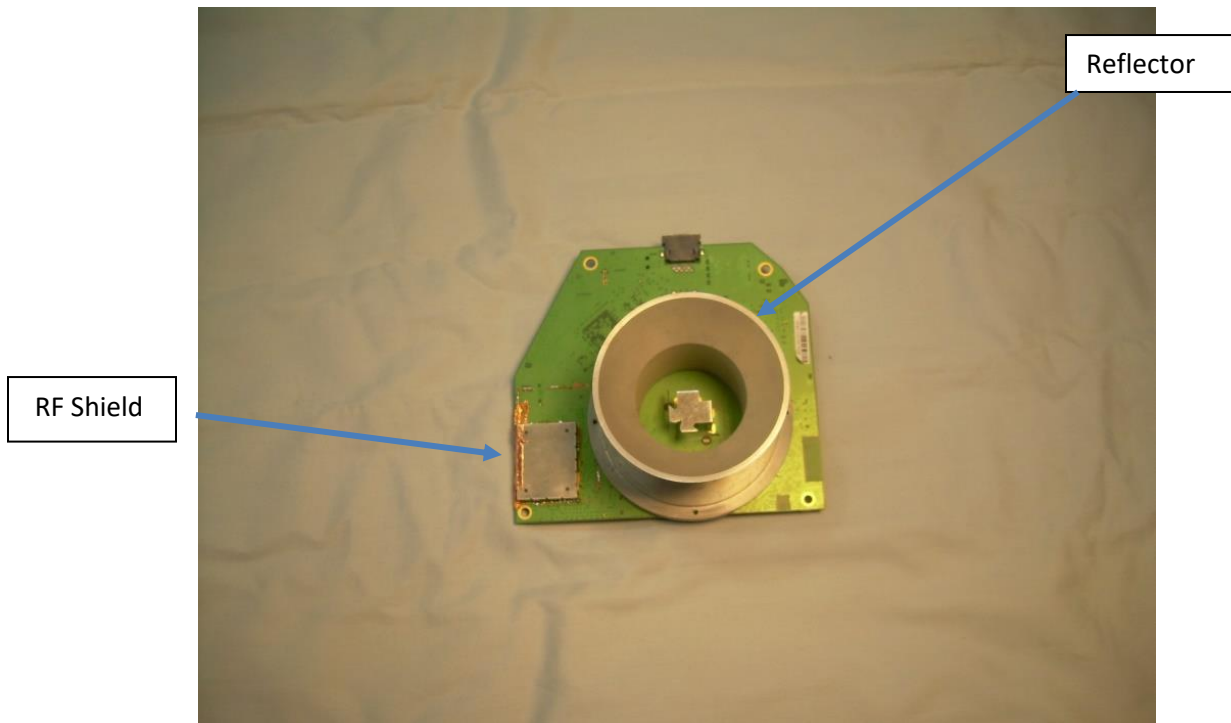
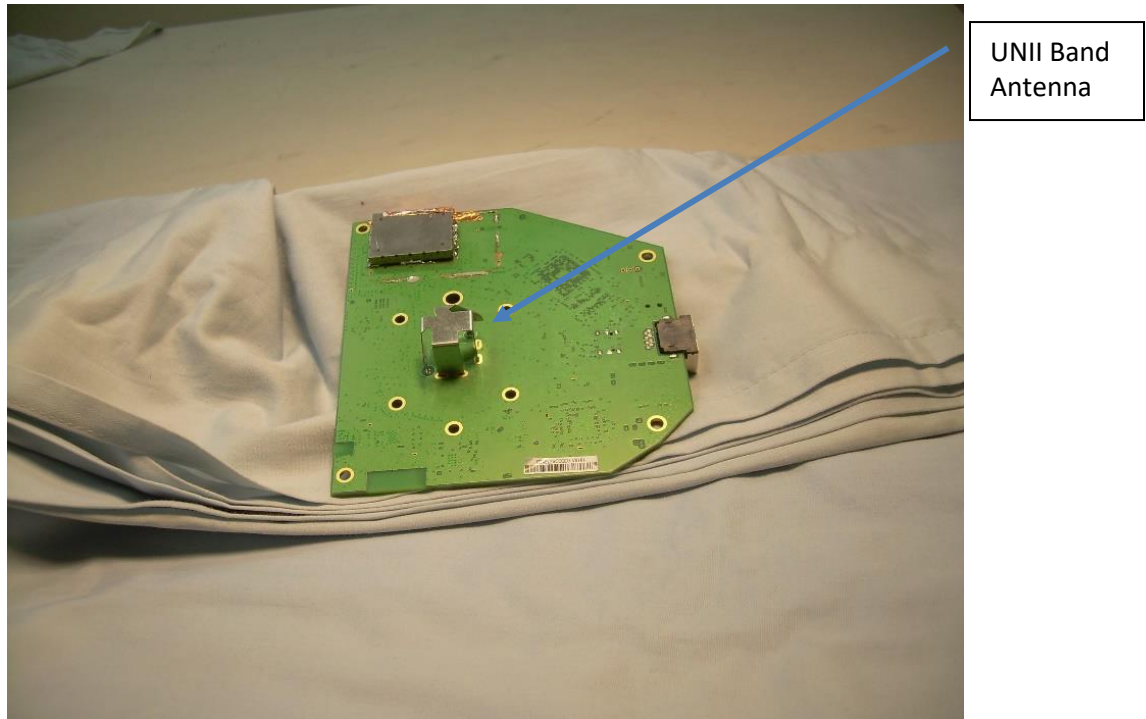


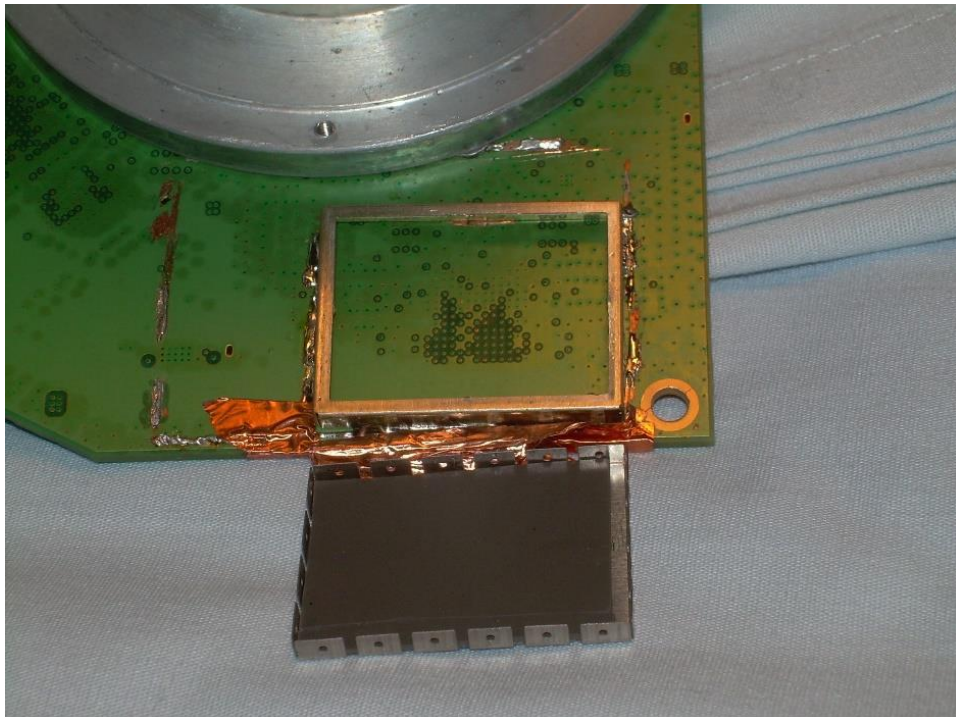
## Internal Photographs



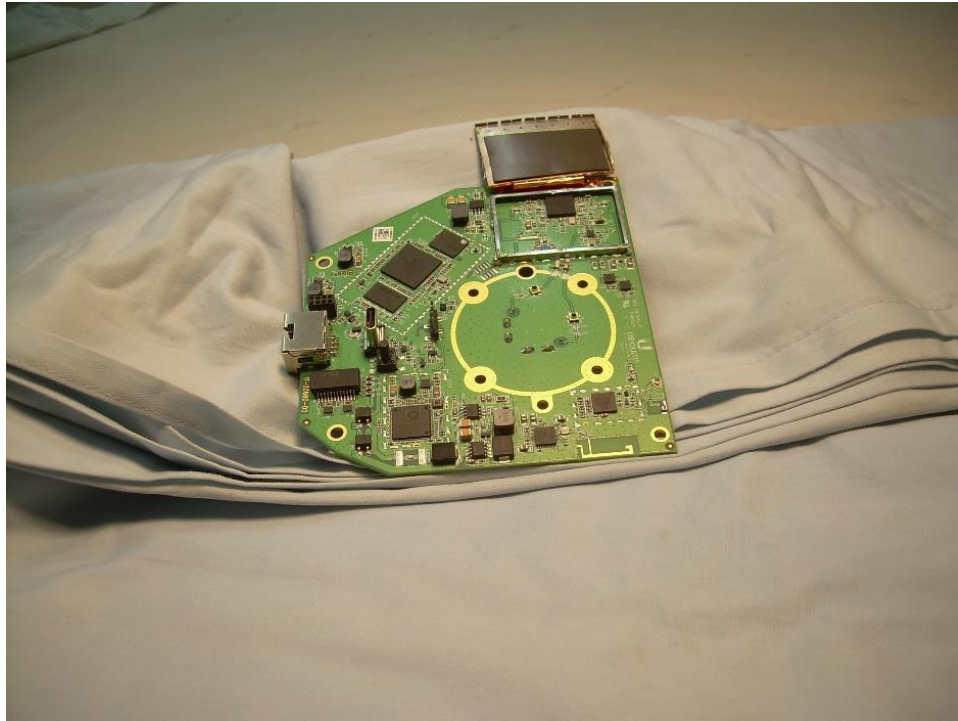
**Photograph 1 – Internal Front View of the EUT with Reflector in Place**



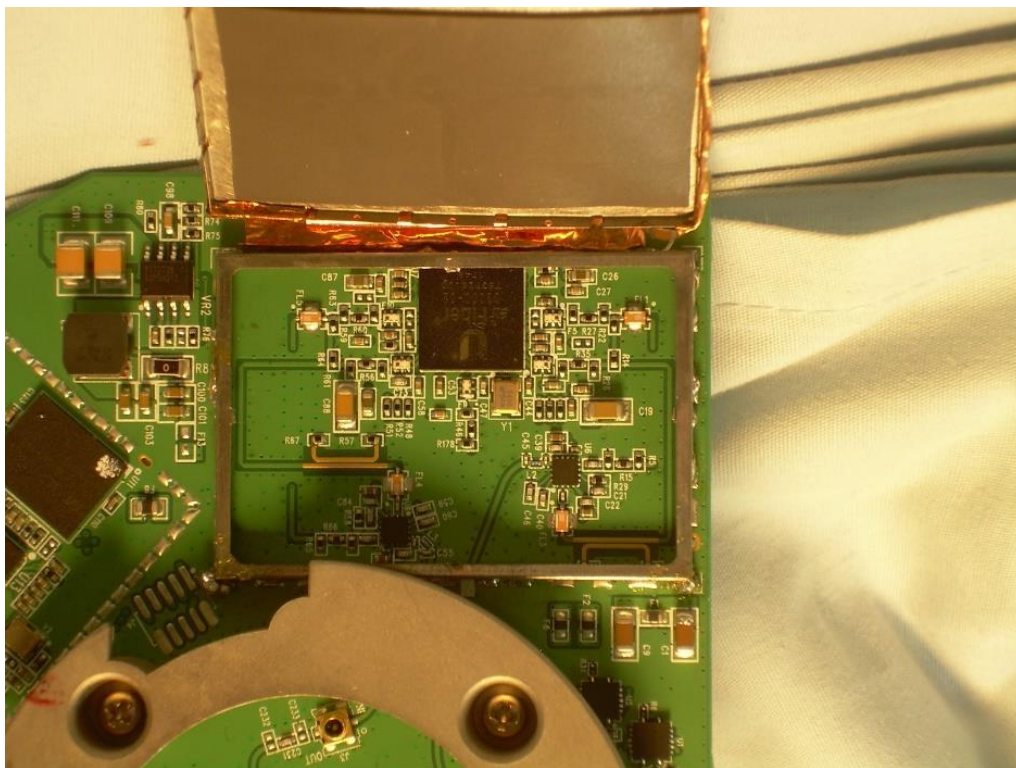
**Photograph 2 – Internal Front View of the EUT with Reflector Removed**



**Photograph 3 – Internal Front View of the EUT with RF Shield Open**

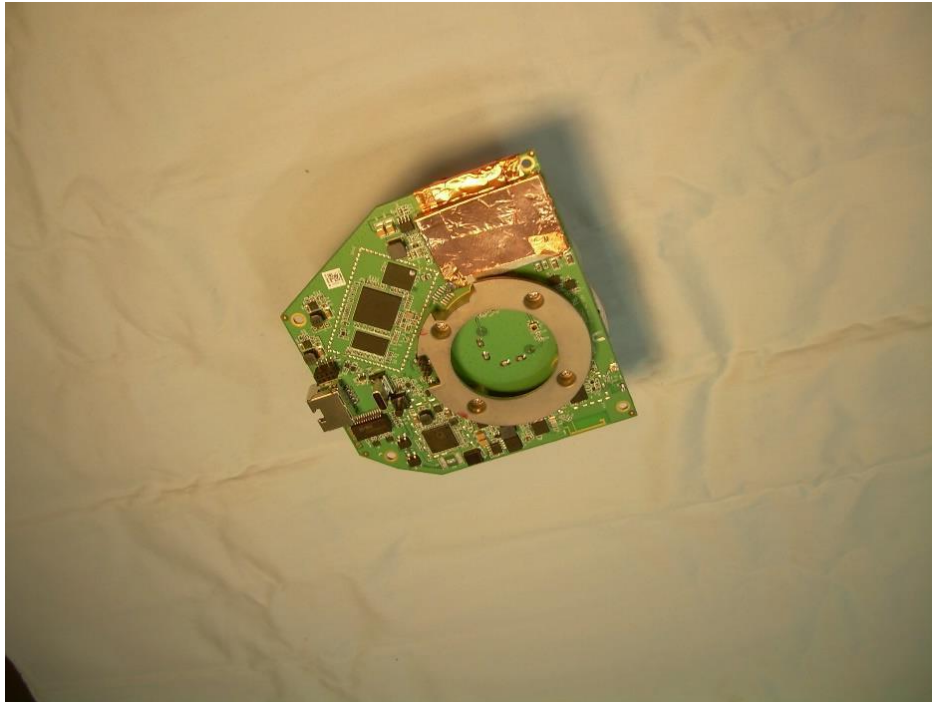


**Photograph 4 –Internal Back View of the EUT with RF Shield Open**

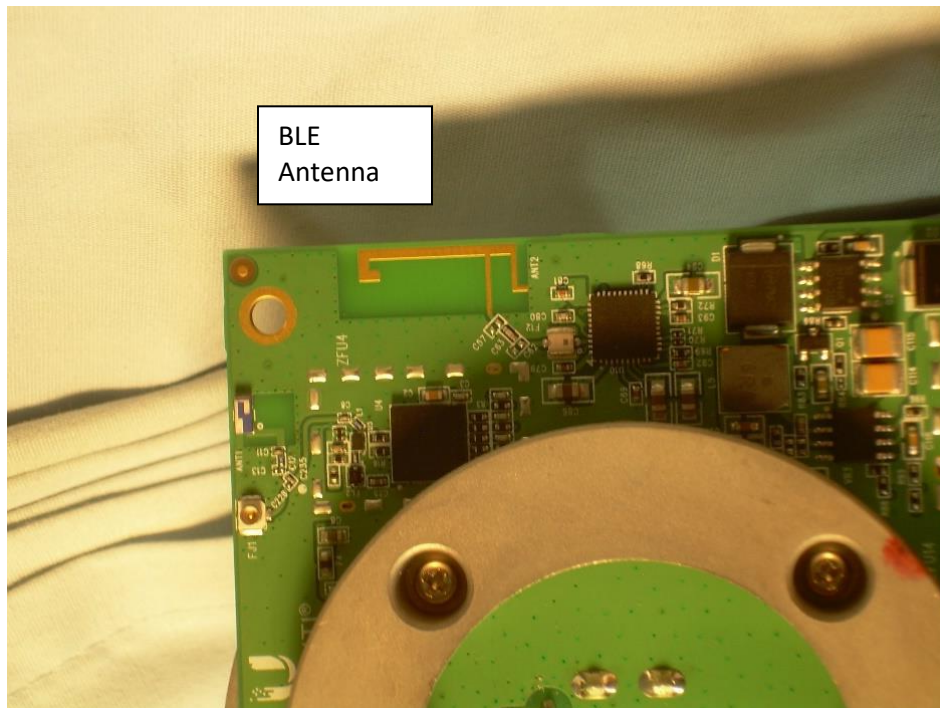


**Photograph 5 – Internal Back View of the EUT With RF Shielding Open**





**Photograph 6 – Internal Back View of the EUT With RF Shielding**



**Photograph 7 – View of BLE Antenna**