

# AMPLIFI™

PROTECT



QUICK START GUIDE

MODEL: AFi-VC4



## Introduction

Thank you for purchasing the AmpliFi™ Protect system. This Quick Start Guide is designed to guide you through installation and also includes warranty terms.



# Package Contents



Amplifi Vault



(4) Protect Cams



(4) Camera Power Adapters



Vault Power Adapter



(4) Optional Angle Mounts



Mounting Kit



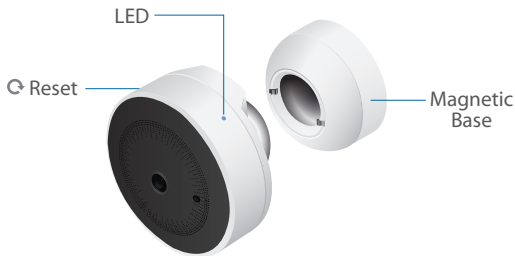
Ethernet Cable



Quick Start Guide

# Hardware Overview

## Protect Cam



To reset the Protect Cam to its factory default settings, use an object such as a straightened paper clip or pin to press the *Reset* for approximately 10 seconds until the LED flashes white.

LED

The LED indicates the Protect Cam's status as detailed on the next page.

## LED States

Flashing White	Device initializing
Steady White	Resetting to factory default settings
Alternating White/Blue	Firmware upgrade in progress
Flashing Blue	Location feature activated
Steady Blue	Wi-Fi connected
Steady Red	No Wi-Fi connection
Flashing Red	Wi-Fi connected but AmpliFi Vault inaccessible

# AmpliFi Vault



Front



The front of the AmpliFi Vault features a full-color touchscreen display.




The bottom of the AmpliFi Vault features an LED that is lit when the Vault is configured and ready for use.






Back

**RESET** To reset the device to its factory default settings, use an object such as a straightened paper clip or pin to press the *Reset* for approximately 10 seconds until the LED turns off.

 Connects to the AmpliFi or third-party router.

 Connects to a USB 3.0 device. Maximum power is 5W (5V, 1A).

 The *Vault Power Adapter* connects to this port.

# Installation

## AmpliFi Vault

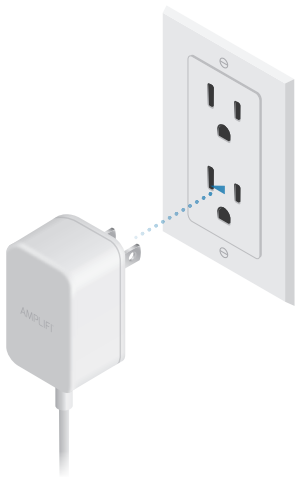
- 1 Connect the *Ethernet Cable* to the Ethernet  $\leftrightarrow$  port. Then connect the other end to a local area network (LAN) port on your router.



- 2** Connect the *Vault Power Adapter* to the power  port on the AmpliFi Vault.



- 3** Plug the *Vault Power Adapter* into an outlet.



- 4** Install the AmpliFi Protect app on your smartphone or mobile device. The AmpliFi Protect app is available from the App Store or Google Play™ Store.



- 5** Launch the AmpliFi Protect app. As you install each camera, follow the on-screen instructions to configure your AmpliFi Protect system.



## Protect Cam

The Protect Cam streams Full HD video and audio over a secure, private Wi-Fi network to the AmpliFi Vault, and can be mounted virtually anywhere in your house.

The Protect Cam can be mounted in three ways:

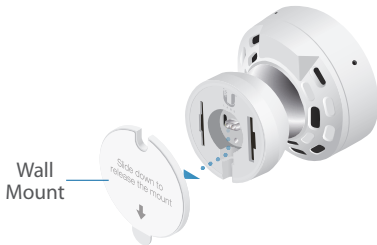
- **Magnetic** For temporary installation
- **Adhesive** For fast, permanent installation
- **Screws** For secure installation



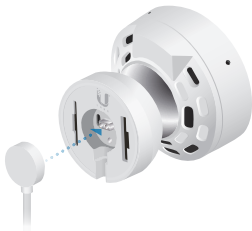
Optional: To determine the correct position for the Protect Cam before mounting it:

1. Power on the camera (see steps 1-2 and 5 on the following pages).
2. Wait until the AmpliFi Vault displays the Protect Cam on the touchscreen.
3. Set the camera's location by moving it while looking at its feed on the AmpliFi Protect app.
4. Go to step 3 on page 14.

- 1 Remove the *Wall Mount* from the *Magnetic Base*.

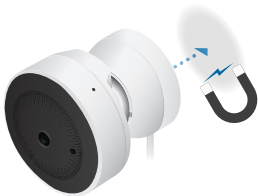


- 2 Attach the *Camera Power Adapter* to the *Magnetic Base*.



**3** Mount the *Magnetic Base*:

- a** For temporary installation, attach the camera and *Magnetic Base* directly to a metal fixture. Go to step 5.

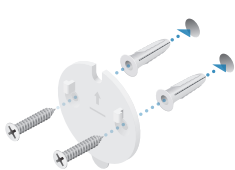


- b** If a metal fixture is not available, attach the *Wall Mount* using the adhesive backing.

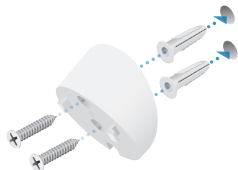




- C** For a secure installation, use the *Mounting Kit* to fasten the *Wall Mount* or the *Angle Mount*.



Wall Mount



Angle Mount

- 4** Attach the camera and *Magnetic Base* to the mount.



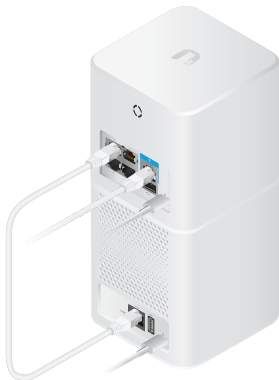
- 5** Plug the *Camera Power Adapter* into an outlet.



- 6** When the AmpliFi Vault detects the Protect Cam, it will display the camera on the touchscreen.
- 7** Use the AmpliFi Protect app to configure additional settings on the camera as needed.

## Pair with AmpliFi Router

The AmpliFi Vault was engineered for optimal performance and security when used with the AmpliFi Router. Technically and aesthetically paired, they work beautifully together.



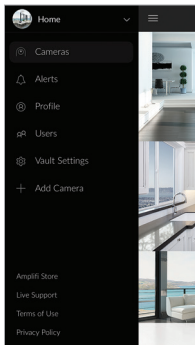
Rear Connections



Front View

## 24/7 Live Chat Support

Live chat support is available within the app, 24 hours a day, 7 days a week. Tap the ☰ icon in the upper left of the app and then tap **Live Support**.



Live chat is also available at **help.amplifi.com** by selecting **Chat with us** in the bottom right.

# Protect Cam (AFi-VC) Specifications

Dimensions (without Angle Mount)	51.4 Ø x 54.33 mm (2.02 Ø x 2.14")
Weight (without Angle Mount)	93 g (3.28 oz)
Optical Sensor	OV4689, 1/3" 4 MP HDR Sensor
Lens	M127B02722IRD115
View Angle	124° (H), 65° (V), 150° (D)
Night Mode	Built-in Light Sensor and IR LEDs, Removable IR Cut Filter
Video Compression	H.264
Resolution	1080p (1920 x 1080)
Max. Frame Rate	30 fps
Image Settings	Flip, Brightness, Contrast, AE Mode (50/60 Hz), WDR, Hue, Infrared, Sharpness, Saturation, De-Noise
Audio Support	Microphone and Speaker
Networking Interface	802.11a/b/g/n, 2.4/5 GHz Dual-Band WiFi
Power Supply	5V, 1A DC Adapter (Included)
Supported Voltage Range	5V (4.85 to 5.35V)
Max. Power Consumption	5W
Operating Temperature	32 to 95° F (0 to 35° C)
Operating Humidity	20 to 90% Noncondensing
Certifications	FCC, CE, IC

# Vault (AFi-Vault) Specifications

Dimensions	99.5 x 97.8 x 116.1 mm (3.92 x 3.85 x 4.57")
Weight	835 g (1.841 lb)
Processor Specs	MT7623N
Memory Information	2 GB
Hard Drive Capacity	1 TB
Video Decoder	H.264
Max. Frame Rate	30 fps
Speaker	Yes
Audio Decoder	AAC
Management Interface	AmpliFi Protect App
Physical Control Interface	Touchscreen UI (640 x 480)
Networking Interface	(1) Gigabit Ethernet, 802.11ac, Bluetooth
Max. Power Consumption	25W
Power Method	9VDC, 3A
Power Supply	9V, 2.8A DC Adapter (Included)
ESD/EMP Protection	± 24 kV Air / Contact
Operating Temperature	32 to 95° F (0 to 35° C)
Operating Humidity	20 to 80% Noncondensing
Certifications	FCC, CE, IC

# Product Warranty

## Warranty Terms

Each of our manufactured products (a "Product") is warranted against defects in materials and workmanship for a period of one (1) year from the date of original purchase when used under normal conditions and consistent with applicable Product documentation, subject to the other terms in this Product Warranty.

## Warranty Service

If we determine that the hardware components of a Product do not conform to this Product Warranty during the applicable warranty period we will, at our option, repair or replace the Product, or refund the original purchase price of the Product.

## Returns

To benefit from this Product Warranty, you must obtain an RMA during the warranty period. You will be responsible for delivering the Product to the designated RMA address, freight prepaid, for warranty service. We will pay the return freight for the Product using a service of our choice. You may request, and will be solely responsible for, payment of any shipping upgrades. Any Product shipped to us under an RMA, but which is not covered by this Product Warranty, will not be returned.

To obtain an RMA, please use our online RMA Request form, located at: [www.amplifi.com/RMA](http://www.amplifi.com/RMA)

You will be required to supply the following information: name, contact information, and shipping information; date of purchase of the Product (we may request a copy of the invoice as proof of purchase); problem description; MAC Address of the Product; and troubleshooting actions taken so far. By submitting an RMA Request, you confirm all terms in this Product Warranty.

Following warranty service, a repaired or replacement product may be returned to you as the Product was configured when originally purchased. You are responsible for all back-up, recovery and reinstallation of other software or data.

For customers outside of the United States: you are required to use your own shipping account when sending the Product; the commercial invoice must declare "return for repair" and "no commercial value"; the total value of the commercial invoice cannot exceed \$10.00 USD. If these steps are not followed, the RMA Request will not be accepted or fulfilled. You are responsible for all applicable duties and customs charges for shipment of a Product to and from us.

## Limitations of Warranty and Liability

This Product Warranty sets forth our sole and exclusive liability, and the sole and exclusive remedies available in relation to any non-conformity, defect or similar claim. This Product Warranty is provided only to the original purchaser of the Product. This Product Warranty does not, among other things, cover labor cost for removing and reinstalling a Product for repair, any consumable parts that are readily replaced in normal use, problems caused by normal wear and tear or otherwise due to the normal aging of the Product, or cosmetic damage. No representation or warranty is made with respect to services that may be delivered or made available in connection with a Product.

This Product Warranty does not apply to any Product that we determine has been, in any way: disassembled, modified or altered, other than by us or as authorized by us; painted, rebranded or physically modified; improperly installed or not used at all times in accordance with the applicable Product documentation; damaged due to improper cabling or installation; subjected to misuse, abuse, negligence, or abnormal physical, electromagnetic or electrical stress; damaged or impaired as a result of the use of third party hardware, firmware or software; or, has had its original Ubiquiti Networks MAC address label removed; or, has not been received by us within thirty (30) days of issuance of the RMA.

For a Product to be eligible under this Product Warranty, you shall: use only CAT5 (or above) cabling for all Ethernet cabling runs; use shielded Ethernet cabling for outdoor installations; follow indoor cabling requirements for indoor installations; operate the Product in accordance with the applicable Product documentation; use all software updates made available for your Product; comply with all applicable laws and regulations governing the installation and use of the Product; obtain all locally required authorizations, permits, and licenses; not export to, or use the Product in, any jurisdiction or for any person in a manner that would cause a violation of U.S. or other laws.

TO THE EXTENT PERMITTED BY APPLICABLE LAW, NEITHER UBIQUITI NETWORKS NOR ANY OF ITS AFFILIATES ARE LIABLE FOR ANY DIRECT, INDIRECT, INCIDENTAL OR CONSEQUENTIAL DAMAGES ARISING OUT OF THE PURCHASE OR USE OF A PRODUCT, INCLUDING WITHOUT LIMITATION ANY LOST PROFITS OR LOST SAVINGS (INCLUDING LOSS OF REVENUE OR PROFITS ON CONTRACTS, LOSS OF THE USE OF MONEY, LOSS OF GOODWILL, LOSS OF OPPORTUNITY, DAMAGE TO REPUTATION, OR LOSS OF USE OR INTERRUPTION OF BUSINESS, COST OF COVER OR PROCUREMENT OF SUBSTITUTE GOODS), HOWEVER CAUSED, ARISING IN CONTRACT, TORT, BREACH OF WARRANTY, NEGLIGENCE, STRICT LIABILITY OR OTHERWISE. THIS PRODUCT WARRANTY AND REMEDIES SET FORTH HEREIN ARE EXCLUSIVE AND IN LIEU OF ALL OTHER WARRANTIES, REMEDIES, AND CONDITIONS, WHETHER ORAL, WRITTEN, EXPRESS, STATUTORY OR IMPLIED. EXCEPT FOR ANY EXPRESS WARRANTIES SET FORTH HEREIN, UBIQUITI NETWORKS, ITS AFFILIATES, AND ITS AND THEIR SUPPLIERS, LICENSORS, SERVICE AND OTHER



PROVIDERS HEREBY DISCLAIM AND MAKE NO OTHER REPRESENTATION OR WARRANTY OF ANY KIND, EXPRESS, IMPLIED OR STATUTORY, INCLUDING, BUT NOT LIMITED TO, REPRESENTATIONS, GUARANTEES, OR WARRANTIES OF MERCHANTABILITY, ACCURACY, QUALITY OF SERVICE OR RESULTS, AVAILABILITY, SATISFACTORY QUALITY, LACK OF VIRUSES, LACK OF VULNERABILITY TO INTRUSION OR ATTACK, QUIET ENJOYMENT, FITNESS FOR A PARTICULAR PURPOSE AND NON-INFRINGEMENT AND ANY WARRANTIES ARISING FROM ANY COURSE OF DEALING, USAGE OR TRADE PRACTICE IN CONNECTION WITH SUCH PRODUCTS AND SERVICES. YOU ACKNOWLEDGE THAT NEITHER UBIQUITI NETWORKS NOR ITS THIRD PARTY PROVIDERS CONTROL YOUR EQUIPMENT OR THE TRANSFER OF DATA OVER COMMUNICATIONS FACILITIES, INCLUDING THE INTERNET, AND THAT THE PRODUCTS AND SERVICES MAY BE SUBJECT TO LIMITATIONS, INTERRUPTIONS, DELAYS, CANCELLATIONS AND OTHER PROBLEMS INHERENT IN THE USE OF COMMUNICATIONS FACILITIES. UBIQUITI NETWORKS, ITS AFFILIATES AND ITS AND THEIR SUPPLIERS AND SERVICE AND OTHER PROVIDERS ARE NOT RESPONSIBLE FOR ANY INTERRUPTIONS, DELAYS, CANCELLATIONS, DELIVERY FAILURES, DATA LOSS, CONTENT CORRUPTION, PACKET LOSS, OR OTHER DAMAGE RESULTING FROM ANY OF THE FOREGOING. IF IMPLIED WARRANTIES CANNOT BE DISCLAIMED, THEN SUCH WARRANTIES ARE LIMITED IN DURATION TO THE DURATION OF THIS WARRANTY OR AS OTHERWISE REQUIRED BY LAW. EXCEPT FOR THE WARRANTIES EXPLICITLY MADE TO YOU UNDER THIS PRODUCT WARRANTY, AND ANY OTHER WARRANTY REQUIRED BY APPLICABLE LAW, ALL PRODUCTS AND SERVICES ARE PROVIDED ON AN "AS IS" BASIS WITHOUT ANY WARRANTY WHATSOEVER. WE DO NOT WARRANT THAT THE OPERATION OF THE PRODUCT WILL BE ERROR FREE OR UNINTERRUPTED, OR THAT THE PRODUCT WILL CONFORM TO SPECIFICATIONS THAT ARE NOT DEFINED IN THIS PRODUCT WARRANTY. NO WARRANTY OR REMEDY SHALL APPLY OR BE AVAILABLE TO A PRODUCT FOR WHICH AN RMA HAS NOT BEEN REQUESTED DURING THE WARRANTY PERIOD. These limitations and disclaimers apply even if the express warranty may be deemed to fail of its essential purpose. No person is authorized to waive or modify the terms of this Product Warranty. Some jurisdictions do not allow the exclusions of certain implied warranties or certain terms and conditions, so some of the above limitations and exclusions may not apply to you. The United Nations Convention on Contracts for the International Sale of Goods shall not apply to any transactions regarding the sale of the Product.

# Compliance

## FCC

Changes or modifications not expressly approved by the party responsible for compliance could void the user's authority to operate the equipment.

This device complies with Part 15 of the FCC Rules. Operation is subject to the following two conditions.

- 1 This device may not cause harmful interference, and
- 2 This device must accept any interference received, including interference that may cause undesired operation.

This equipment has been tested and found to comply with the limits for a Class B digital device, pursuant to Part 15 of the FCC Rules. These limits are designed to provide reasonable protection against harmful interference in a residential installation. This equipment generates, uses, and can radiate radio frequency energy and, if not installed and used in accordance with the instructions, may cause harmful interference to radio communications. However, there is no guarantee that interference will not occur in a particular installation. If this equipment does cause harmful interference to radio or television reception, which can be determined by turning the equipment off and on, the user is encouraged to try to correct the interference by one or more of the following measures:

- Reorient or relocate the receiving antenna.
- Increase the separation between the equipment and receiver.
- Connect the equipment into an outlet on a circuit different from that to which the receiver is connected.
- Consult the dealer or an experienced radio/TV technician for help.

The AmpliFi Vault and Protect Cam have been approved by the FCC under FCC ID: SWX-AFV and contains FCC ID: SWX-M445G (for AmpliFi Vault); FCC ID: SWX-AFVC (for Protect Cam).

### CAN ICES-3(B)/NMB-3(B)

This Class B digital apparatus complies with Canadian CAN ICES-003.

To reduce potential radio interference to other users, the antenna type and its gain should be so chosen that the equivalent isotropically radiated power (e.i.r.p.) is not more than that permitted for successful communication.

This device complies with Industry Canada licence-exempt RSS standard(s). Operation is subject to the following two conditions:

- 1 This device may not cause interference, and
- 2 This device must accept any interference, including interference that may cause undesired operation of the device.

The AmpliFi Vault and Protect Cam have been approved by Industry Canada under IC: 6545A-AFV and contains IC: 6545A-M445G (for AmpliFi Vault); IC: 6545A-AFVC (for Protect Cam).

The device could automatically discontinue transmission in case of absence of information to transmit, or operational failure. Note that this is not intended to prohibit transmission of control or signaling information or the use of repetitive codes where required by the technology.

The device for operation in the band 5150-5250 MHz is only for indoor use to reduce the potential for harmful interference to co-channel mobile satellite systems. In addition, high-power radars are allocated as primary users (i.e. priority users) of the bands 5250-5350 MHz and 5650-5850 MHz and these radars could cause interference and/or damage to LE-LAN devices.

## CAN ICES-3(B)/NMB-3(B)

Cet appareil numérique de la classe B est conforme à la norme NMB-003 du Canada.

Pour réduire le risque d'interférence aux autres utilisateurs, le type d'antenne et son gain doivent être choisies de façon que la puissance isotrope rayonnée équivalente (PIRE) ne dépasse pas ce qui est nécessaire pour une communication réussie.

Cet appareil est conforme à la norme RSS Industrie Canada exempts de licence norme(s). Son fonctionnement est soumis aux deux conditions suivantes:

- 1 Cet appareil ne peut pas provoquer d'interférences et
- 2 Cet appareil doit accepter toute interférence, y compris les interférences qui peuvent causer un mauvais fonctionnement du dispositif.

Le AmpliFi Vault et Protect Cam ont été approuvés par Industrie Canada en vertu IC : 6545A-AFV et contient IC : 6545A-M445G (pour AmpliFi Vault); IC : 6545A-AFVC (pour Protect Cam).

Le dispositif doit interrompre automatiquement l'émission en cas d'absence d'information à transmettre ou en cas de panne. À noter que l'objectif de cette disposition n'est pas d'empêcher la transmission d'informations de contrôle ou de signalisation, ni l'utilisation de codes répétitifs exigés par la technique.

Les dispositifs fonctionnant dans la bande de 5 150 à 5 250 MHz sont réservés uniquement pour une utilisation à l'intérieur afin de réduire les risques de brouillage préjudiciable aux systèmes de satellites mobiles utilisant les mêmes canaux. De plus, les radars de haute puissance sont désignés utilisateurs principaux (c.-à-d., qu'ils ont la priorité) des bandes de 5 250 à 5 350 MHz et de 5 650 à 5 850 MHz et, ces radars pourraient causer du brouillage et/ou des dommages aux dispositifs de RL-EL.



## Battery Warning

- (1). Do not expose cells or batteries to heat or fire. Avoid storage in direct sunlight.
- (2). Do not use any cell or battery which is not designed for use with the equipment.
- (3). Always purchase the battery recommended by the device manufacturer for the equipment.
- (4). Secondary cells and batteries need to be charged before use. Always use the correct charger and refer to the manufacturer's instructions or equipment manual for proper charging instructions.

## RF Exposure Warning

The antennas used for this transmitter must be installed to provide a separation distance of at least 20 cm from all persons and must not be located or operating in conjunction with any other antenna or transmitter.

Les antennes utilisées pour ce transmetteur doivent être installées en considérant une distance de séparation de toute personne d'au moins 20 cm et ne doivent pas être localisées ou utilisées en conflit avec toute autre antenne ou transmetteur.

## CE Marking

CE marking on this product represents the product is in compliance with all directives that are applicable to it.

## Alert Sign (!) Follows CE Marking

Alert sign must be indicated if a restriction on use applied to the product and it must follow the CE marking.



# RoHS/WEEE Compliance Statement



## English

European Directive 2012/19/EU requires that the equipment bearing this symbol on the product and/or its packaging must not be disposed of with unsorted municipal waste. The symbol indicates that this product should be disposed of separately from regular household waste streams. It is your responsibility to dispose of this and other electric and electronic equipment via designated collection facilities appointed by the government or local authorities. Correct disposal and recycling will help prevent potential negative consequences to the environment and human health. For more detailed information about the disposal of your old equipment, please contact your local authorities, waste disposal service, or the shop where you purchased the product.

## Deutsch

Die Europäische Richtlinie 2012/19/EU verlangt, dass technische Ausrüstung, die direkt am Gerät und/oder an der Verpackung mit diesem Symbol versehen ist, nicht zusammen mit unsortiertem Gemeindeabfall entsorgt werden darf. Das Symbol weist darauf hin, dass das Produkt von regulärem Haushaltsmüll getrennt entsorgt werden sollte. Es liegt in Ihrer Verantwortung, dieses Gerät und andere elektrische und elektronische Geräte über die dafür zuständigen und von der Regierung oder örtlichen Behörden dazu bestimmten Sammelstellen zu entsorgen. Ordnungsgemäßes Entsorgen und Recyceln trägt dazu bei, potentielle negative Folgen für Umwelt und die menschliche Gesundheit zu vermeiden. Wenn Sie weitere Informationen zur Entsorgung Ihrer Altgeräte benötigen, wenden Sie sich bitte an die örtlichen Behörden oder städtischen Entsorgungsdienste oder an den Händler, bei dem Sie das Produkt erworben haben.

## Español

La Directiva 2012/19/EU exige que los equipos que lleven este símbolo en el propio aparato y/o en su embalaje no deben eliminarse junto con otros residuos urbanos no seleccionados. El símbolo indica que el producto en cuestión debe separarse de los residuos domésticos convencionales con vistas a su eliminación. Es responsabilidad suya desechar este y cualesquiera otros aparatos eléctricos y electrónicos a través de los puntos de recogida que ponen a su disposición el gobierno y las autoridades locales. Al desechar y reciclar correctamente estos aparatos estará contribuyendo a evitar posibles consecuencias negativas para el medio ambiente y la salud de las personas. Si desea obtener información más detallada sobre la eliminación segura de su aparato usado, consulte a las autoridades locales, al servicio de recogida y eliminación de residuos de su zona o pregunte en la tienda donde adquirió el producto.

## Français

La directive européenne 2012/19/EU exige que l'équipement sur lequel est apposé ce symbole sur le produit et/ou son emballage ne soit pas jeté avec les autres ordures ménagères. Ce symbole indique que le produit doit être éliminé dans un circuit distinct de celui pour les déchets des ménages. Il est de votre responsabilité de jeter ce matériel ainsi que tout autre matériel électrique ou électronique par les moyens de collecte indiqués par le gouvernement et les pouvoirs publics des collectivités territoriales. L'élimination et le recyclage en bonne et due forme ont pour but de lutter contre l'impact néfaste potentiel de ce type de produits sur l'environnement et la santé publique. Pour plus d'informations sur le mode d'élimination de votre ancien équipement, veuillez prendre contact avec les pouvoirs publics locaux, le service de traitement des déchets, ou l'endroit où vous avez acheté le produit.

## Italiano

La direttiva europea 2012/19/EU richiede che le apparecchiature contrassegnate con questo simbolo sul prodotto e/o sull'imballaggio non siano smaltite insieme ai rifiuti urbani non differenziati. Il simbolo indica che questo prodotto non deve essere smaltito insieme ai normali rifiuti domestici. È responsabilità del proprietario smaltire sia questi prodotti sia le altre apparecchiature elettriche ed elettroniche mediante le specifiche strutture di raccolta indicate dal governo o dagli enti pubblici locali. Il corretto smaltimento ed il riciclaggio aiuteranno a prevenire conseguenze potenzialmente negative per l'ambiente e per la salute dell'essere umano. Per ricevere informazioni più dettagliate circa lo smaltimento delle vecchie apparecchiature in Vostro possesso, Vi invitiamo a contattare gli enti pubblici di competenza, il servizio di smaltimento rifiuti o il negozio nel quale avete acquistato il prodotto.

# Declaration of Conformity

Česky [Czech]	UBIQUITI NETWORKS tímto prohlašuje, že toto UBIQUITI NETWORKS zařízení, je ve shodě se základními požadavky a dalšími příslušnými ustanoveními směrnice 1999/5/ES.
Dansk [Danish]	Hermed, UBIQUITI NETWORKS, erklærer at denne UBIQUITI NETWORKS enhed, er i overensstemmelse med de væsentlige krav og øvrige relevante krav i direktiv 1999/5/EF.
Nederlands [Dutch]	Hierbij verklaart UBIQUITI NETWORKS, dat deze UBIQUITI NETWORKS apparaat, in overeenstemming is met de essentiële eisen en de andere relevante bepalingen van richtlijn 1999/5/EG.
English	Hereby, UBIQUITI NETWORKS, declares that this UBIQUITI NETWORKS device, is in compliance with the essential requirements and other relevant provisions of Directive 1999/5/EC.
Eesti [Estonian]	Käesolevaga UBIQUITI NETWORKS kinnitab, et antud UBIQUITI NETWORKS seade, on vastavus olulistele nõuetele ja teistele asjakohastele sätetele direktiivi 1999/5/EÜ.
Suomi [Finnish]	Täten UBIQUITI NETWORKS vakuuttaa, että tämä UBIQUITI NETWORKS laite, on yhdenmukainen olennaisten vaatimusten ja muiden sitä koskevien direktiivin 1999/5/EY.
Français [French]	Par la présente UBIQUITI NETWORKS déclare que l'appareil UBIQUITI NETWORKS, est conforme aux exigences essentielles et aux autres dispositions pertinentes de la directive 1999/5/CE.
Deutsch [German]	Hiermit erkläre UBIQUITI NETWORKS, dass sich dieses UBIQUITI NETWORKS Gerät, in Übereinstimmung mit den grundlegenden Anforderungen und den anderen relevanten Vorschriften der Richtlinie 1999/5/EG befindet.
Ελληνική [Greek]	Δια του παρόντος, UBIQUITI NETWORKS, δηλώνει ότι αυτή η συσκευή UBIQUITI NETWORKS, είναι σε συμμόρφωση με τις βασικές απαιτήσεις και τις λοιπές σχετικές διατάξεις της οδηγίας 1995/5/ΕΚ.



Magyar [Hungarian]	Ezennel UBIQUITI NETWORKS kijelenti, hogy ez a UBIQUITI NETWORKS készülék megfelel az alapvető követelményeknek és más vonatkozó 1999/5/EK irányelv rendelkezéseit.
Íslenska [Icelandic]	Hér, UBIQUITI NETWORKS, því yfir að þetta UBIQUITI NETWORKS tæki er í samræmi við grunnkröfur og önnur viðeigandi ákvæði tilskipun 1999/5/EB.
Italiano [Italian]	Con la presente, UBIQUITI NETWORKS, dichiara che questo dispositivo UBIQUITI NETWORKS, è conforme ai requisiti essenziali ed alle altre disposizioni pertinenti della direttiva 1999/5/CE.
Latviski [Latvian]	Ar šo, UBIQUITI NETWORKS, deklarē, ka UBIQUITI NETWORKS ierīce, ir saskaņā ar būtiskajām prasībām un citiem attiecīgiem noteikumiem Direktīvā 1999/5/EK.
Lietuviškai [Lithuanian]	UBIQUITI NETWORKS deklaruoja, kad šis UBIQUITI NETWORKS įrenginys atitinka esminius reikalavimus ir kitas 1999/5/EB Direktyvos nuostatas.
Malti [Maltese]	Hawnhekk, UBIQUITI NETWORKS, tid dikjara li dan il-mezz UBIQUITI NETWORKS huwa konformi mar-rekwiżiti essenzjali u dispożizzjonijiet rilevanti oħrajn ta' Direttiva 1999/5/KE.
Norsk [Norwegian]	Herved UBIQUITI NETWORKS, erklærer at denne UBIQUITI NETWORKS enheten, er i samsvar med de grunnleggende kravene og andre relevante bestemmelser i direktiv 1999/5/EF.
Polski [Polish]	Niniejszym, Ubiquiti Networks, oświadcza, że urządzenie UBIQUITI NETWORKS, jest zgodny z zasadniczymi wymaganiami oraz pozostałymi stosownymi postanowieniami Dyrektywy 1999/5/WE.
Português [Portuguese]	UBIQUITI NETWORKS declara que este dispositivo UBIQUITI NETWORKS, está conforme com os requisitos essenciais e outras disposições da Directiva 1999/5/CE.
Română [Romanian]	Prin prezenta, UBIQUITI NETWORKS declară că acest dispozitiv UBIQUITI NETWORKS este în conformitate cu cerințele esențiale și alte prevederi relevante ale Directivei 1999/5/CE.
Slovensky [Slovak]	Týmto UBIQUITI NETWORKS, prehlasuje, že toto UBIQUITI NETWORKS zariadenie, je v súlade so základnými požiadavkami a ďalšími relevantnými ustanoveniami smernice 1999/5/ES.
Español [Spanish]	Por medio de la presente UBIQUITI NETWORKS declara que este dispositivo UBIQUITI NETWORKS, cumple con los requisitos esenciales y cualesquiera otras disposiciones aplicables o exigibles de la Directiva 1999/5/CE.
Svenska [Swedish]	Härmed UBIQUITI NETWORKS, intygar att denna UBIQUITI NETWORKS enhet är i överensstämmelse med de väsentliga egenskapskrav och övriga relevanta bestämmelser som framgår av direktiv 1999/5/EG.

# Support

Online

[help.amplifi.com](https://help.amplifi.com)

Email

[help@amplifi.com](mailto:help@amplifi.com)



©2017 Ubiquiti Networks, Inc. All rights reserved. Ubiquiti, Ubiquiti Networks, the Ubiquiti U logo, U Labs, the U Labs logo, and AmpliFi are trademarks or registered trademarks of Ubiquiti Networks, Inc. in the United States and in other countries. Apple, the Apple logo, and iPhone are trademarks of Apple Inc., registered in the U.S. and other countries. App Store is a service mark of Apple Inc. Android, Google, Google Play, the Google Play logo and other marks are trademarks of Google Inc. All other trademarks are the property of their respective owners.

640-00291-01 • AIPH041017





L A B S