

## Unpacking

- Carefully remove all protective material from the i9000S and save the shipping container for later storage and shipping .
- Verify that the following were received.

- Quick start user guide x1
- Power adapter x1
- USB data cable x1
- I9000S Smart POS x1
- 5800mAh Lithium-ion battery

3. Inspect the equipment for damage. If any equipment is missing or damaged, contact the Global Customer Support center immediately.

4. Prior to using the i9000S for the first , remove the protective shipping film that covers the display window.

## Appearance and Buttons

### Front view



## i9000S Smart POS Payment Terminal Quick Start Guide

### Back view



### Side view



## Features

- Power button:** Turns the display on and off. Press and hold to reset the device, power off or swap battery.
- Speaker:** Provides audio out put for video and music playback.
- Touch screen:** Displays all information needed to operate the i9000S
- Battery :** Provides power to the device.
- Battery socket:** Pull up to remove the battery
- Notification LED:** Indicates system status while application generated notifications(programmable).
- Charging LED:** Indicates battery charging status while charging.
- Camera:** Takes photos and videos.
- Camera Flash:** Provides illumination for the camera.
- Volume Up/Down Button:** Increase and decrease audio volume
- NFC Antenna:** Provides communication with other NFC-enabled devices
- IC Card socket:** Able to read the chip-based bank cards
- Magnetic Stripe Card Reader:** Able to read the Magnetic stripe cards.
- Printer:** Thermal paper printing
- Forced restart:** Press and hold the 'power button' at least than 8 seconds .
- Note:** Please turn off the device if you don't want to use it for a long time .

## Appearance and Buttons

### Precautions

- Do not use your device during thunderstorms to protect your device against any danger caused by lightning.
- Keep the device away from excessive heat and direct sunlight. Do not place it on or in heating devices, such as microwave ovens, stoves, or radiators.
- The device may explode if overheated.
- Do not attempt to modify or remanufacture the device, insert foreign objects into it, or immerse or expose it to water or other liquids. Doing so may lead to fire, explosion, or other hazards.
- Do not put the device in fire as they may explode. Damaged device may also explode.
- Dispose of used device in accordance with local regulations. Improper device use may lead to fire, explosion, or other hazards.
- Do not use your device during thunderstorms to protect your device against any danger caused by lightning.
- Ideal operating temperatures are 0°C(32° F) to 45°C(113° F). Ideal storage temperatures are -20°C(-4° F) to 45°C(113° F).

Do not allow children or pets to bite or suck the device. Doing so may result in damage or explosion.

Do not drop the device. If the device is dropped, especially on a hard surface, and may be damaged.

Only Charge the battery with manufacturer's original charging accessory.

Charge and electro-discharge every 3 month during storage. Optimal battery charge for storage is 60%-70%.

Do not store battery when it is full or completely drained. If device is not used for a long time, remove the battery from the device and store. If there is a leak or drum in the battery, please replace the battery in time.

Battery is consumable product. The battery capacity will decrease with time. It is recommended to replace the battery within one to two years.

## Transport Precautions

Do not transport the battery at ambient temperature higher than 65 °C (149 °F).

Please keep device and battery separately during storage. Pack with battery with appropriate packing materials.

## Liability Disclaimer

UROVO Technologies takes steps to ensure that its published Engineering specifications and manuals are correct ,however, error do occur. UROVO Technologies reserves the right to correct any such errors and disclaim liability resulting therefrom.

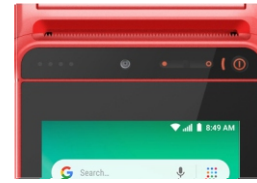
## Battery Charging

Before using the i9000S for the first time, charge the main battery until the green Charging light emitting diode (LED) remains lit. To charge the i9000S use a data cable with the appropriate power supply (5V 1.5A).

The 5800mAh battery charges from fully depleted to 90% in approximately 3.5 hours and from fully depleted to 100% in approximately four hours

To charge the main battery connect the charging accessory to the appropriate power source.

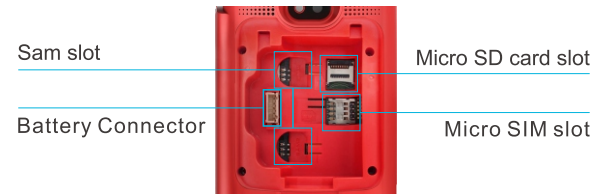
Attach the i9000S to the cable. The i9000S turns on and begins charging. The Charging LED light will stay red while charging, and turns solid green when fully charged.



## Charging LED Description

RED: Charging  
GREEN: Charging completed / Running

## Installing a SIM/microSD Card



MicroSD Card : The microSD card slot provides secondary non-volatile storage. The slot is located under the battery pack. Refer to the documentation provided with card for more information, and follow the manufacturer's recommendations for use.

- 1.Open the microSD Card Holder
- 2.Lift the microSD card holder.
- 3.Place the microSD card into the card holder with contacts facing down.
- 4.Close the microSD Card door .
- 5.Slide the microSD card holder door to the lock position.

SIM/SAM: Only use a micro SIM card or standard SAM card

1. Slide the SAM/Micro-SIM Card into the corresponding slots with contacts facing down.
2. Press and pull the card to remove.



Note:  
Overexertion should be avoid when installing or removing the card.

## Installing the Media Roll



- 1.Lift up the Media Cover.
- 2.Load the Media Roll,note direction media pulls off the roll
- 3.Pull Media out of Printer
- 4.Close Media Cover

## Magnetic Stripe Card Swipe Operating Instructions

- 1.Hold on the device and bank card;
- 2.Swipe the IC card smoothly with the magnetic strip toward inside;



## Contact IC Card Instructions

Insert IC card into the device gently with metal contact upward. Please do not use excessive force so as not to damage the IC card or device.



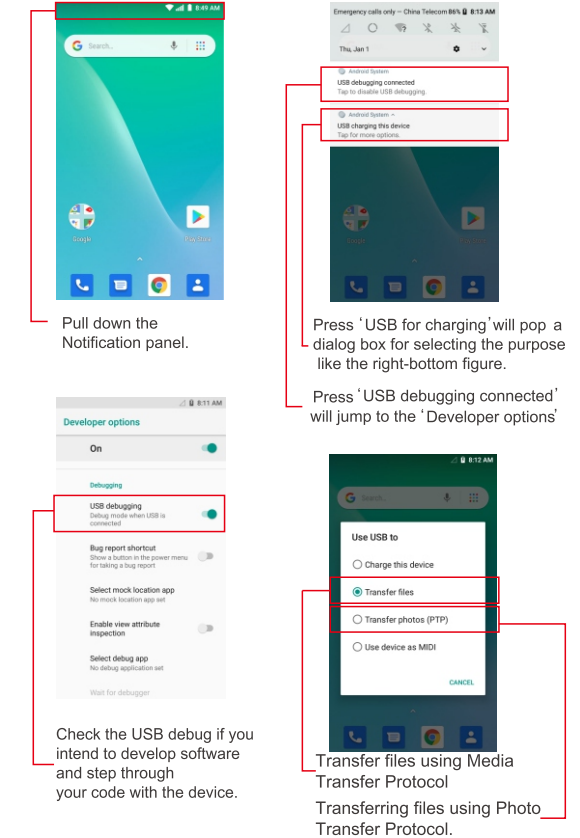
## Contactless IC Card Instructions

Contactless IC Card InstructionsTo read Contactless card, place the card near the NFC antenna, as shown figure:



## Transferring files with Host Computer via USB

Connect the i9000S to a host computer using the USB cable to transfer files between the i9000S and the host computer when connecting the i9000S to a host computer, follow the host computer's instructions for connecting and disconnecting USB devices ,to avoid damaging or corrupting files Once you have installed the required software driver, insert USB cable into the device and the computer's USB port, and you will see the device display as shown in the figure.



Disconnect from the Host Computer

- 1.On the host computer , unmount the device.
- 2.Remove the USB Charging cable from the device or remove the device from the cradle

Note: the contents of this manual are subject to change without prior notice.

Google, Google Play and other marks are trademarks of Google LLC.