



Appendix A: SAR System performance Check Plots

Measurement	Liquid	Frequency	Test Date
System Check	Body	835	2018-05-08
System Check	Body	1800	2018-05-09
System Check	Body	1900	2018-05-10
System Check	Body	2450	2018-05-11
System Check	Body	2600	2018-05-11

System Performance Check (Body, 835MHz)

Type: Validation measurement

Area scan resolution: dx=8mm,dy=8mm

Zoom scan resolution: dx=8mm, dy=8mm, dz=5mm

Date of measurement: 05/08/2018

Measurement duration: 22 minutes 25seconds

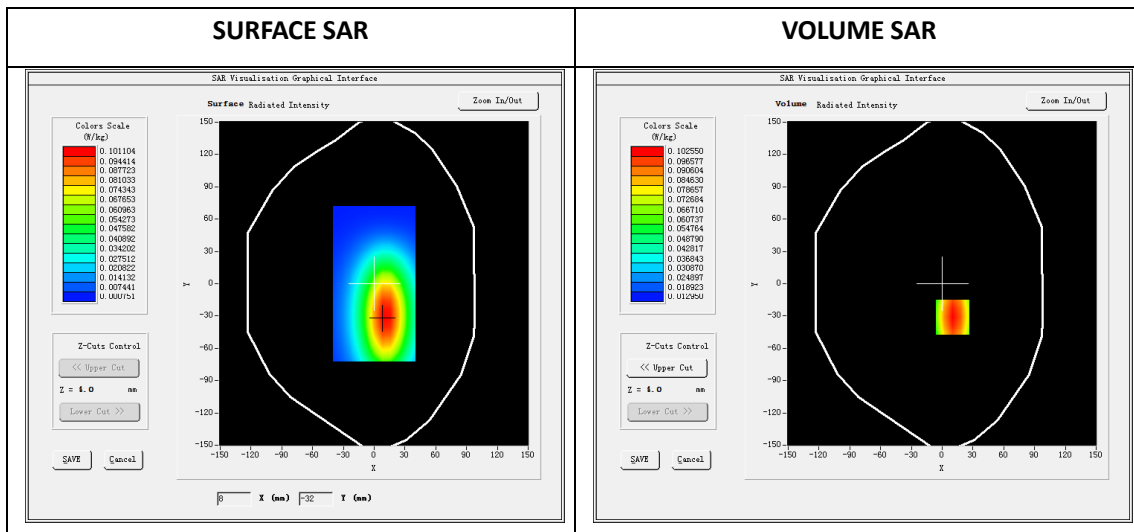
A. Experimental conditions.

Phantom File	dx=8mm dy=8mm
Phantom	5x5x7,dx=8mm dy=8mm dz=5mm
Device Position	Dipole
Band	835MHz
Channels	
Signal	CW

B. SAR Measurement Results

Band SAR

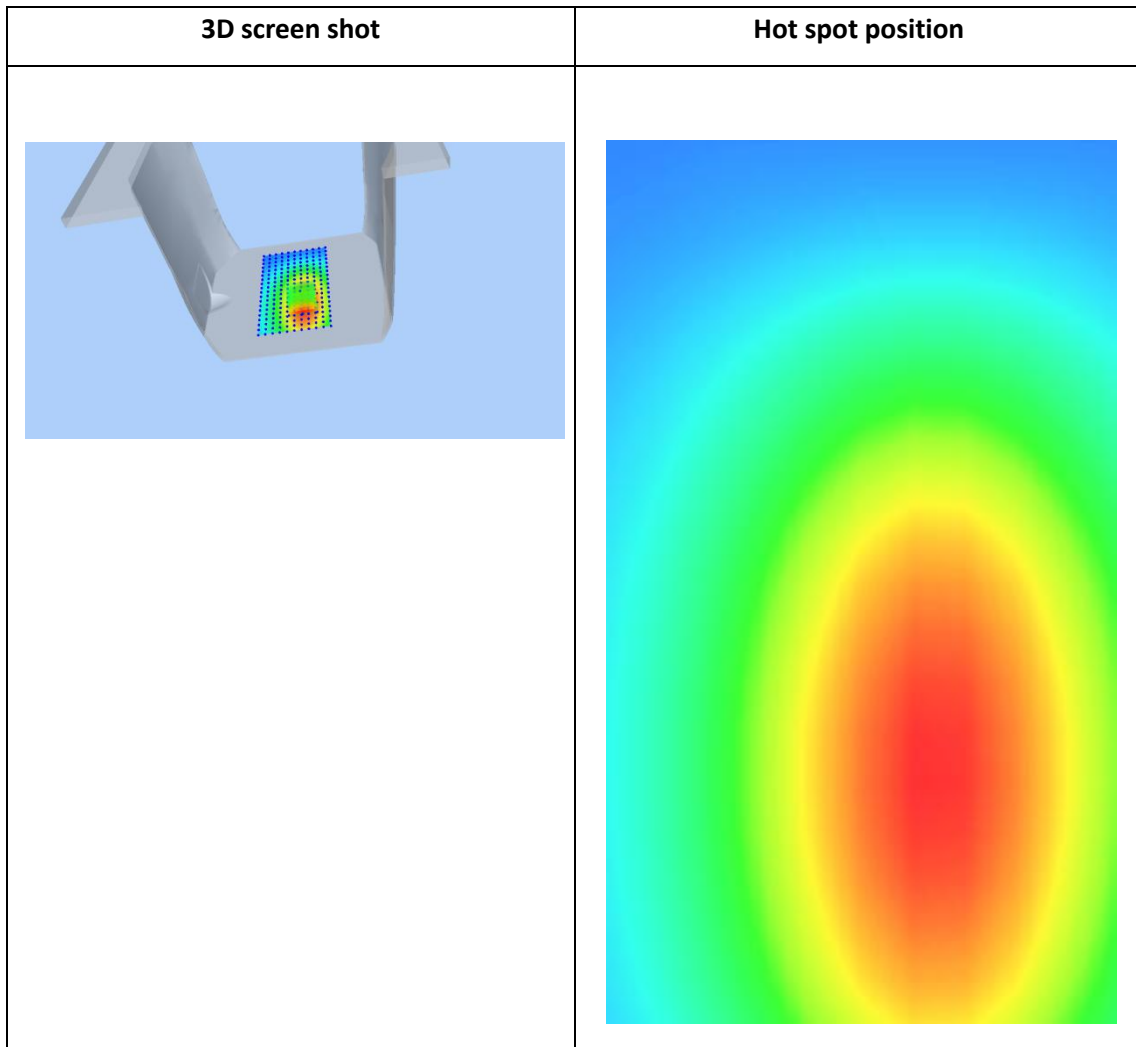
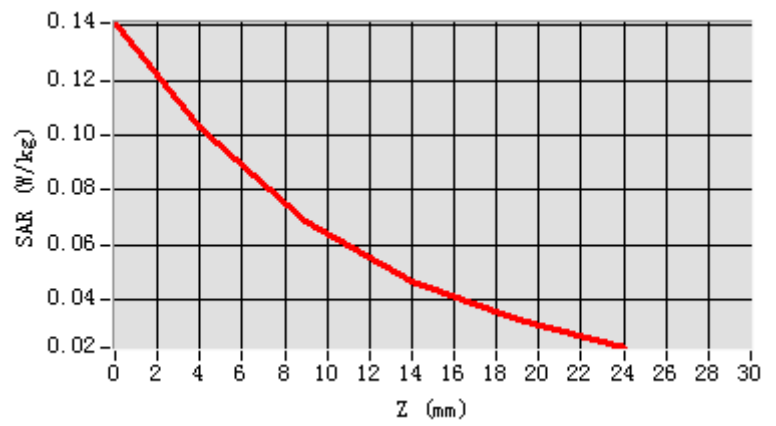
E-Field Probe	SATIMO SN_43/15_EP276
Frequency (MHz)	835
Relative permittivity (real part)	55.22
Relative permittivity	21.12
Conductivity (S/m)	0.98
Power drift (%)	-0.30
Ambient Temperature:	22.2°C
Liquid Temperature:	22.5°C
ConvF:	5.18
Duty factor:	1:1



Maximum location: X=10.00, Y=-31.00

SAR 10g (W/Kg)	0.063400
SAR 1g (W/Kg)	0.097695

Z (mm)	0.00	4.00	9.00	14.00	19.00
SAR (W/Kg)	0.1410	0.1026	0.0686	0.0465	0.0324



System Performance Check (Body, 1800MHz)

Type: Phone measurement

Area scan resolution: dx=8mm,dy=8mm

Zoom scan resolution: dx=8mm, dy=8mm, dz=5mm

Date of measurement: 05/09/2018

Measurement duration: 22 minutes 11 seconds

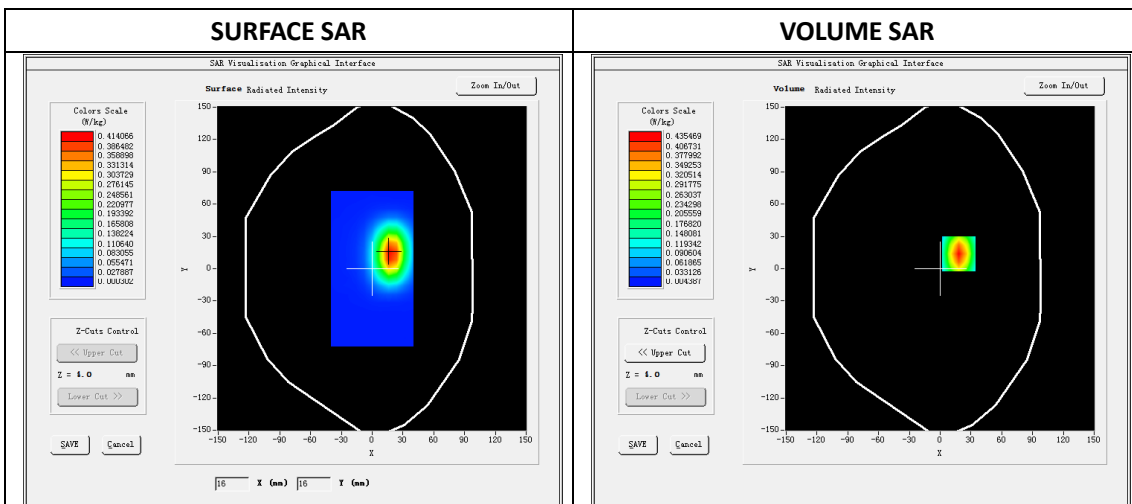
A. Experimental conditions.

Phantom File	dx=8mm dy=8mm
Phantom	5x5x7,dx=8mm dy=8mm dz=5mm
Device Position	Dipole
Band	1800MHz
Channels	
Signal	CW

B. SAR Measurement Results

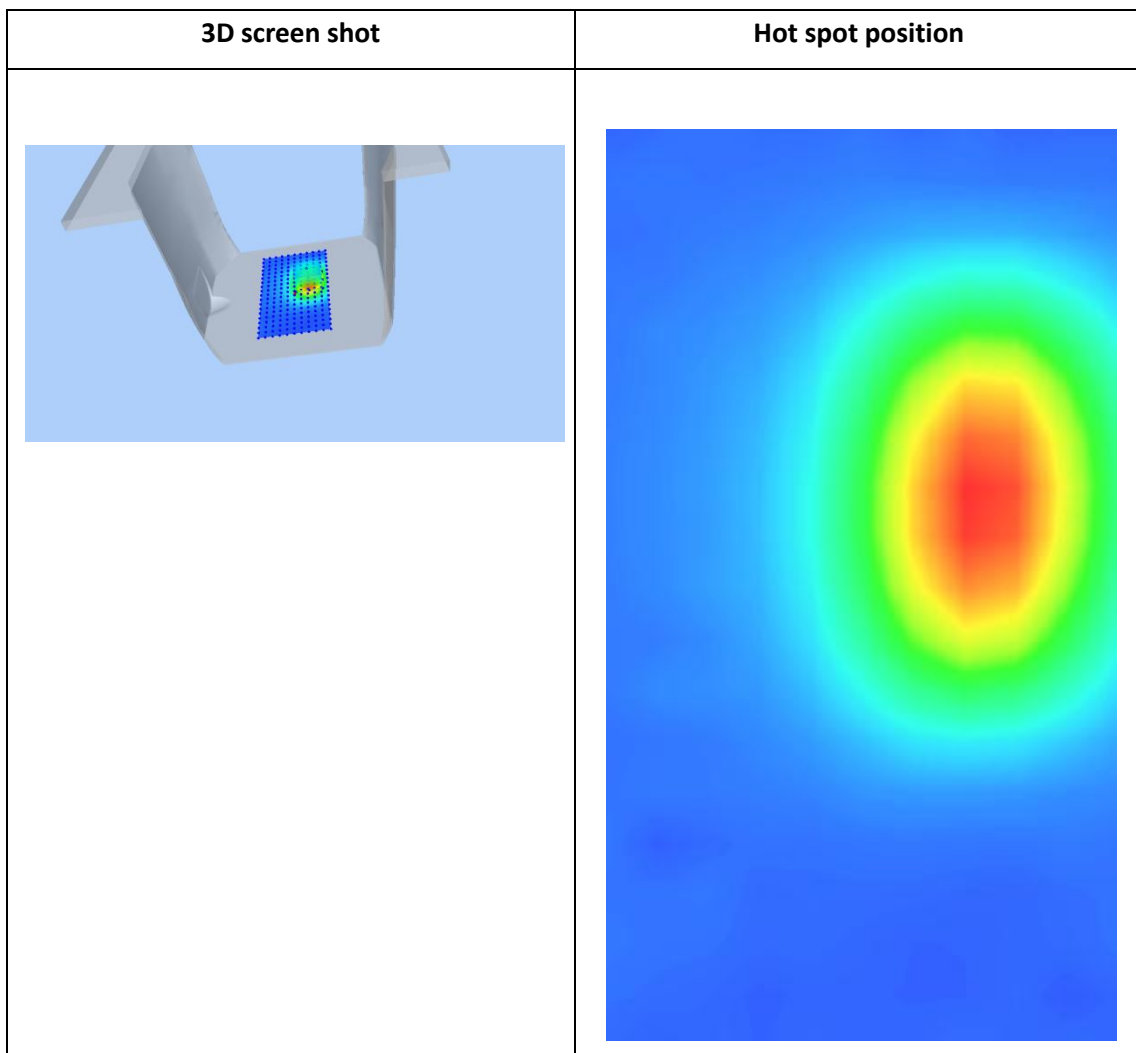
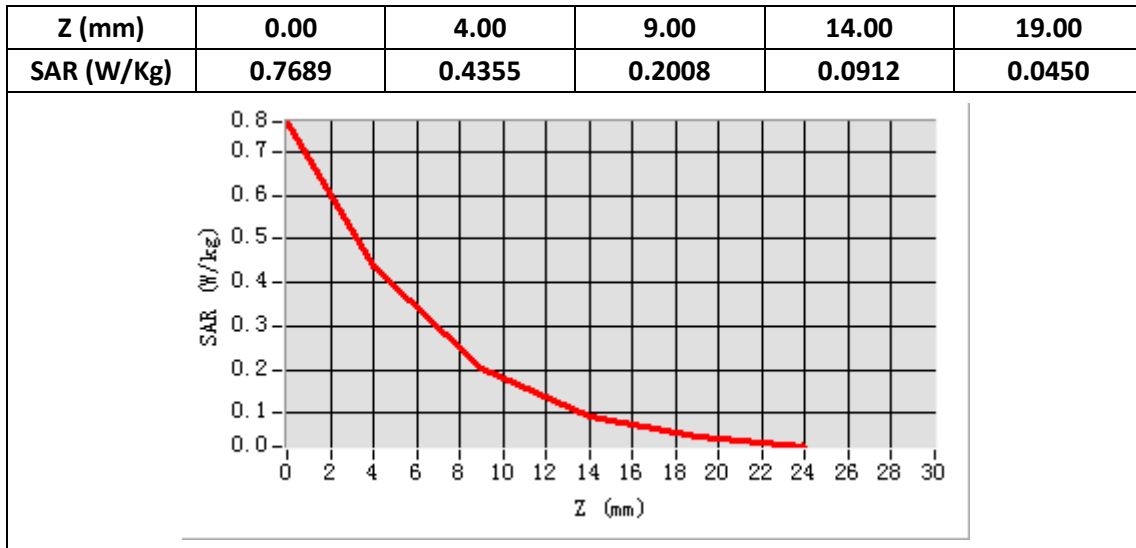
Band SAR

E-Field Probe	SATIMO SN_43/15_EP276
Frequency (MHz)	1800
Relative permittivity (real part)	53.31
Relative permittivity	15.10
Conductivity (S/m)	1.51
Power drift (%)	-0.49
Ambient Temperature:	22.2°C
Liquid Temperature:	22.6°C
ConvF:	4.43
Crest factor:	1:1



Maximum location: X=18.00, Y=14.00

SAR 10g (W/Kg)	0.190988
SAR 1g (W/Kg)	0.404467



System Performance Check (Body, 1900MHz)

Type: Validation measurement

Area scan resolution: dx=8mm,dy=8mm

Zoom scan resolution: dx=8mm, dy=8mm, dz=5mm

Date of measurement: 05/10/2018

Measurement duration: 22 minutes 35 seconds

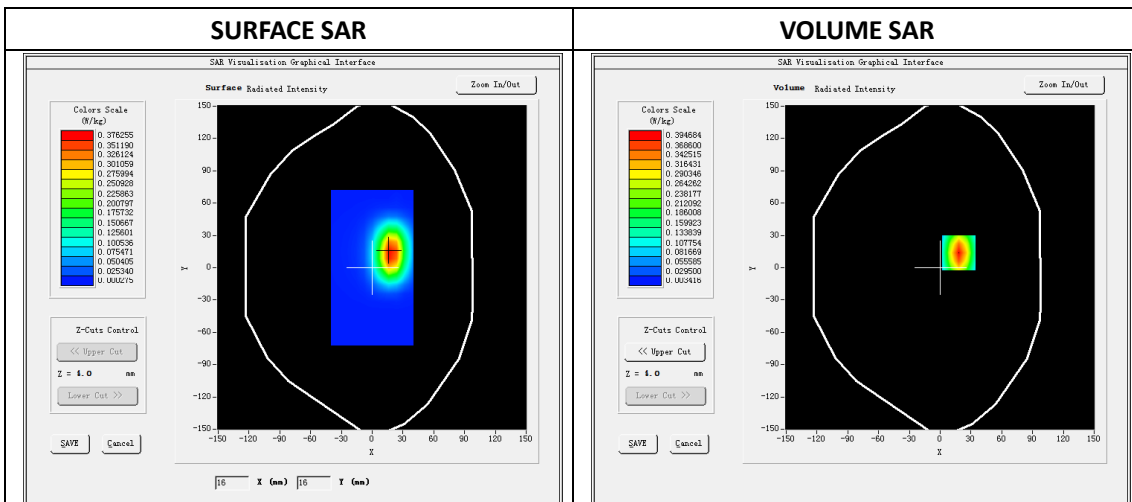
A. Experimental conditions.

Phantom File	dx=8mm dy=8mm
Phantom	5x5x7,dx=8mm dy=8mm dz=5mm
Device Position	Dipole
Band	1900MHz
Channels	
Signal	CW

B. SAR Measurement Results

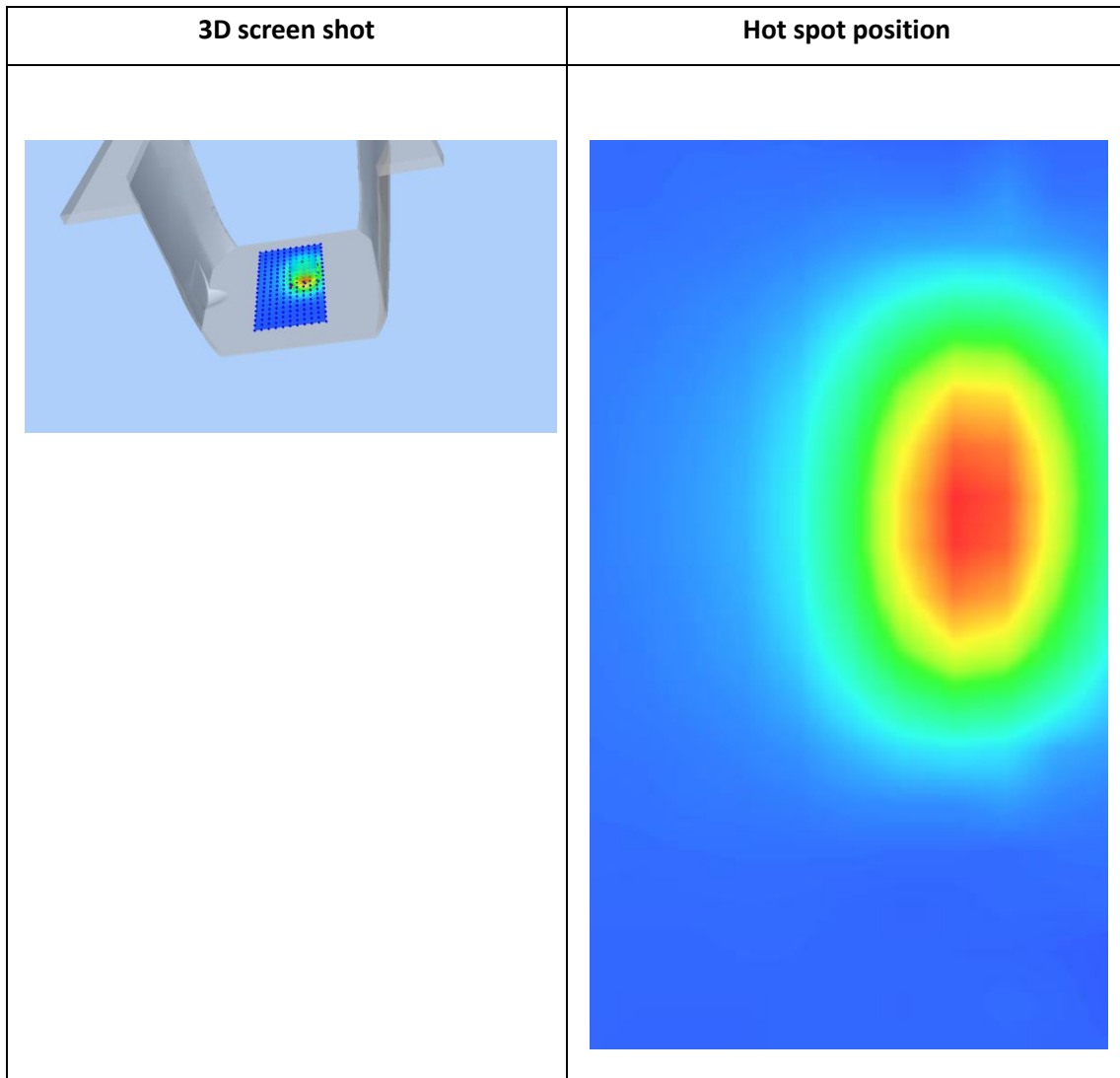
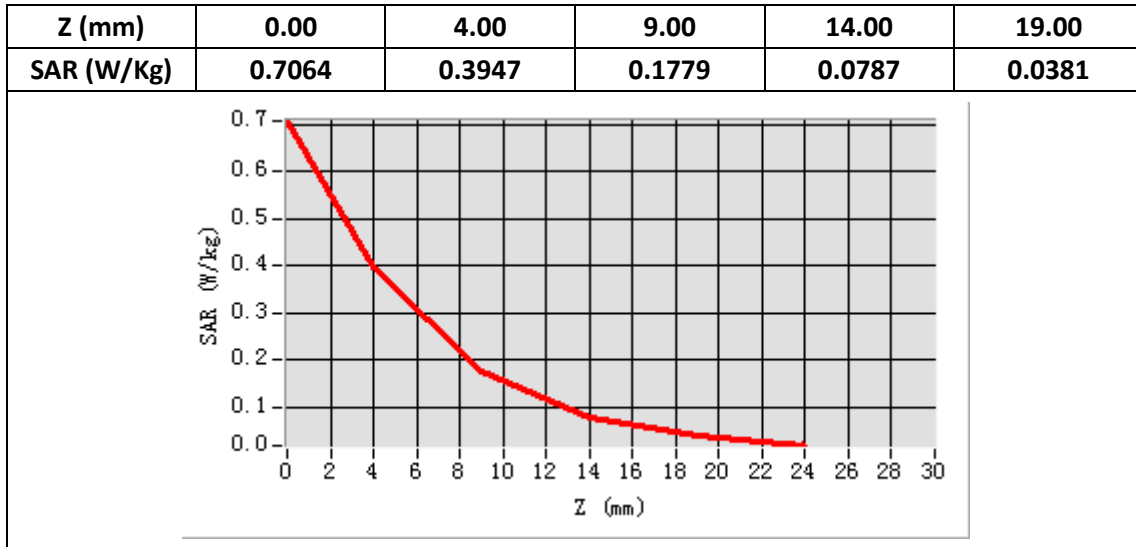
Band SAR

E-Field Probe	SATIMO SN_43/15_EP276
Frequency (MHz)	1900
Relative permittivity (real part)	53.33
Relative permittivity	14.49
Conductivity (S/m)	1.53
Power Drift (%)	-0.04
Ambient Temperature:	22.1°C
Liquid Temperature:	22.6°C
ConvF:	4.83
Duty factor:	1:1



Maximum location: X=18.00, Y=14.00

SAR 10g (W/Kg)	0.181271
SAR 1g (W/Kg)	0.397246



System Performance Check (Body, 2450MHz)

Type: Phone measurement

Area scan resolution: dx=8mm,dy=8mm

Zoom scan resolution: dx=5mm, dy=5mm, dz=4mm

Date of measurement: 05/11/2018

Measurement duration: 22 minutes 38 seconds

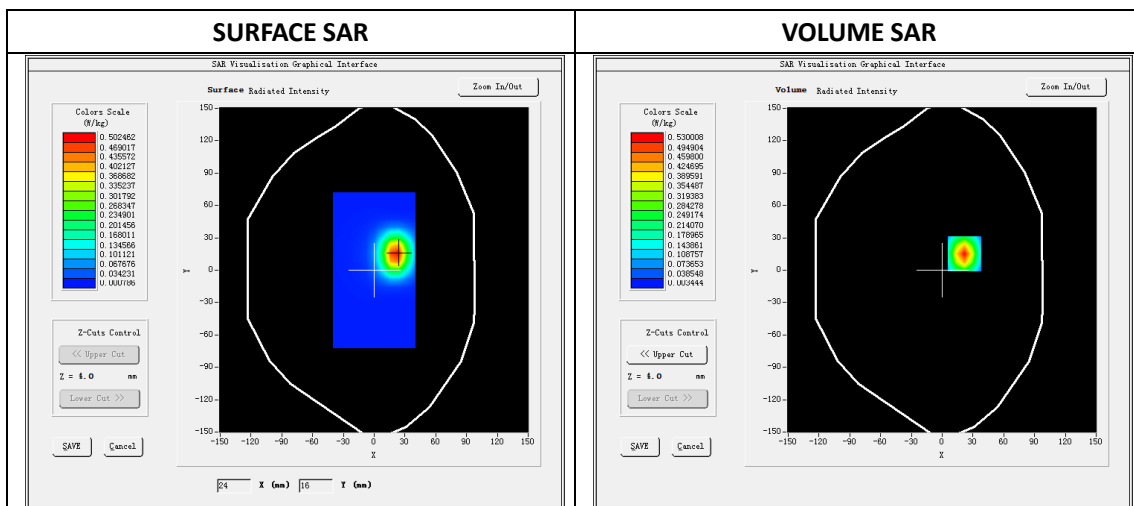
A. Experimental conditions.

Phantom File	dx=8mm dy=8mm
Phantom	7x7x8,dx=5mm dy=5mm dz=4mm
Device Position	Dipole
Band	2450MHz
Channels	
Signal	CW

B. SAR Measurement Results

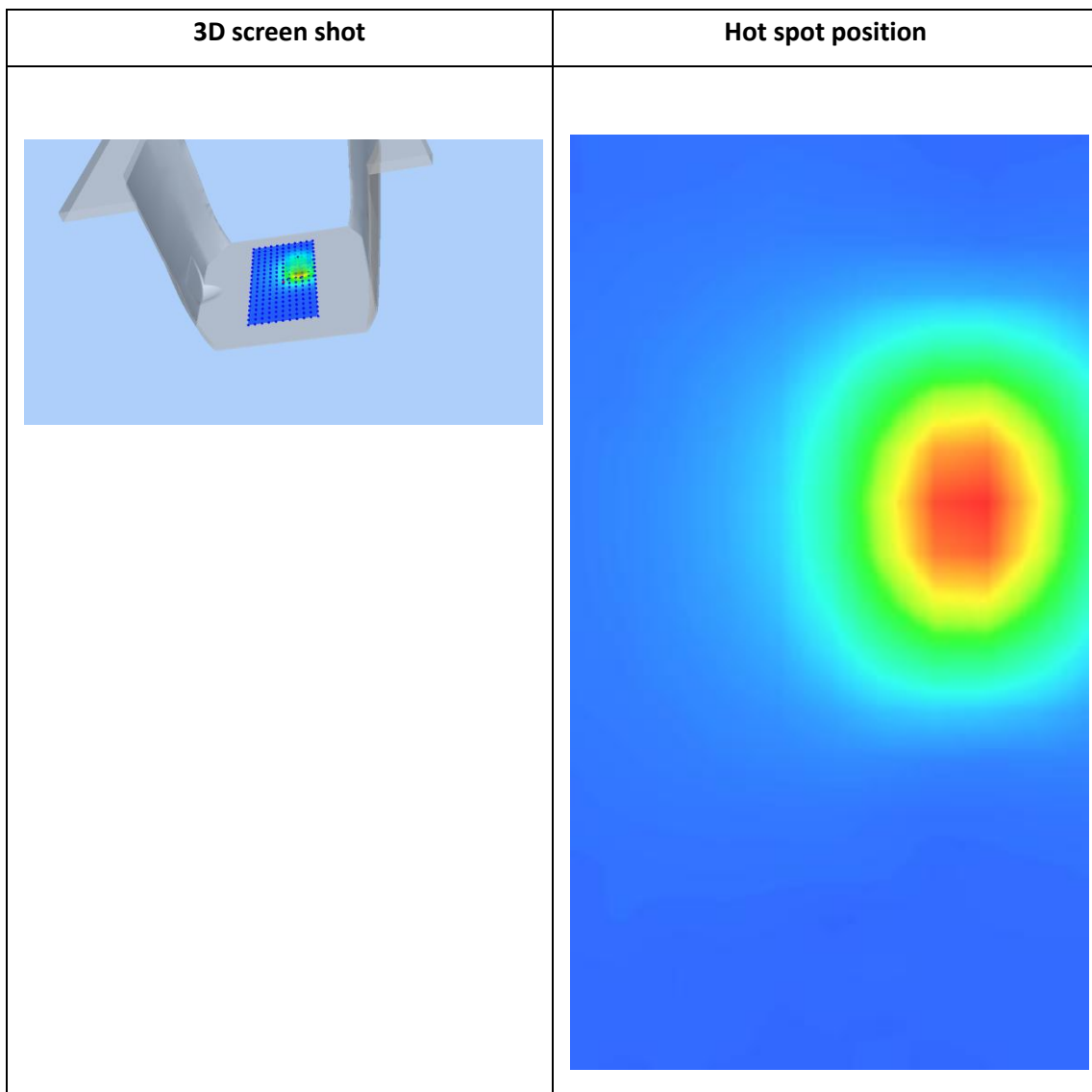
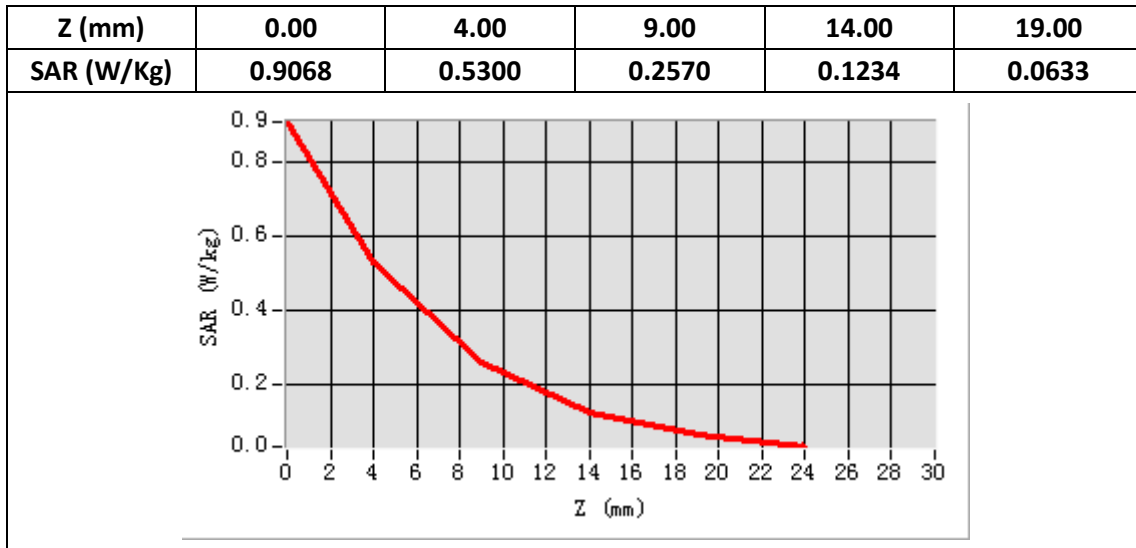
Band SAR

E-Field Probe	SATIMO SN_43/15_EP276
Frequency (MHz)	2450
Relative permittivity (real part)	52.71
Relative permittivity	14.32
Conductivity (S/m)	1.95
Power Drift (%)	-0.42
Duty factor:	1:1
ConvF:	4.61



Maximum location: X=22.00, Y=15.00

SAR 10g (W/Kg)	0.226964
SAR 1g (W/Kg)	0.512794



System Performance Check (Body, 2600MHz)

Type: Phone measurement

Area scan resolution: dx=8mm,dy=8mm

Zoom scan resolution: dx=5mm, dy=5mm, dz=4mm

Date of measurement: 05/11/2018

Measurement duration: 22 minutes 16 seconds

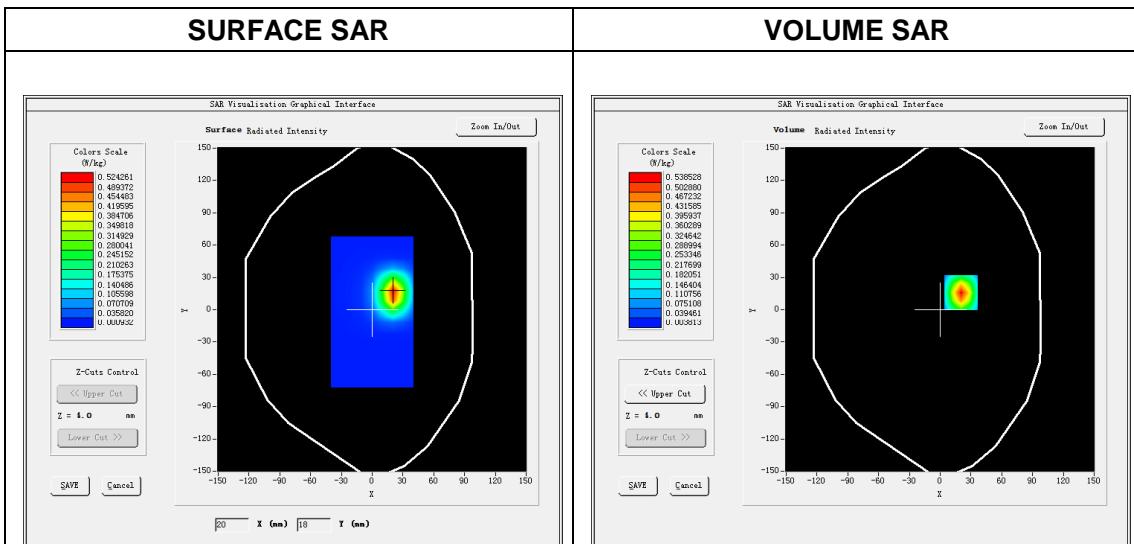
A. Experimental conditions.

Phantom File	dx=8mm dy=8mm
Phantom	7x7x8,dx=5mm dy=5mm dz=4mm
Device Position	Dipole
Band	2600MHz
Channels	
Signal	CW

B. SAR Measurement Results

Band SAR

E-Field Probe	SATIMO SN_43/15_EP276
Frequency (MHz)	2600
Relative permittivity (real part)	52.53
Relative permittivity	14.81
Conductivity (S/m)	2.14
Power drift (%)	-1.29
Ambient Temperature:	22.2°C
Liquid Temperature:	22.5°C
Crest factor:	1:1
ConvF:	4.28



Maximum location: X=20.00, Y=16.00

SAR 10g (W/Kg)	0.232613
SAR 1g (W/Kg)	0.522080

