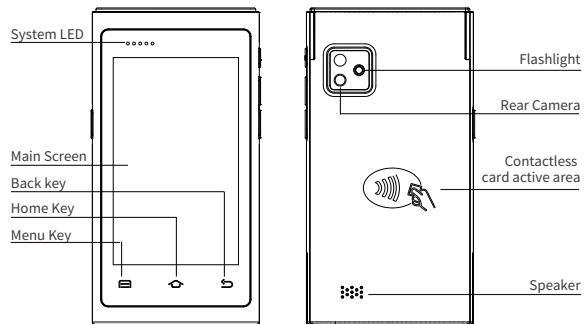
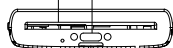


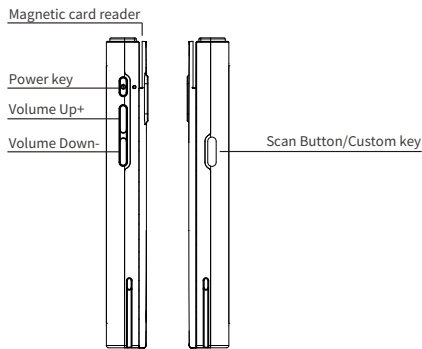
Overview



IC card reader Type C Charging port



Scan window



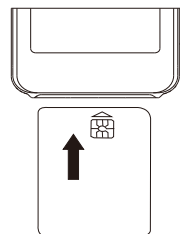
Power on: Long press the power key until the device screen lights up.
Off Screen: When screen on, press power key, screen will be turned off.
To turn off device: Press power button during operation until the device popup a menu, select "Power off".
Resume: Press the power key while system is in sleep mode.
Contactless card indicator: Show contactless card reading status.
Notice: If not use device for long time, please power of the device.

How to use magnetic card reader

Magnetic card reader located at the right side of the device.
 Please keep hands steady when holding the terminal and swiping card.
 When swiping card, please make the magnetic strip of the card contact to magnetic block and quickly pass through the slot.
 Do not change swipe direction or move card up before finish reading,
 Either way to swipe card is acceptable.

How to use IC card reader

IC card reader located at bottom of the terminal. Please let metal IC side up when insert IC card into slot. Keep inserting the IC card until feel the card inserted to the end. Do not use strong force to plug the card.
Caution: Do not pull out the card when the transaction is not completed yet.



How to read contactless card

The reading area of the contactless card is located at the cover of the reading area. Recommended reading range is 0-3cm. Please let the card in printer. When reading card, just let the contactless card close to the parallel with reading area for better reading performance.

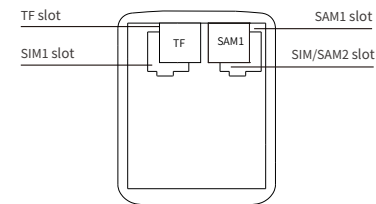


Package includes

- Device x 1
- Battery x 1
- Power adapter x 1
- USB cable x 1
- Quick Start Guide x 1

SIM Card and TF Card installation instructions

Follow direction as figure, gently insert SIM card into slot. Same procedure to TF card and PSAM.



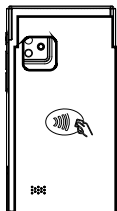
Caution:

1. Please use Nano card;
2. Please not overexert when inserting SIM, TF, and PSAM card.

i2000 Smart Minipos Terminal

How to install battery

Please be aware the battery pack is directivity. When installing battery, please start with top side. Inserting top side first, then push battery top ward, let bottom side in to battery container. Do not overexert or squeeze battery. Close the battery door, battery door and rear cover should be closed tight and flat.



Open the battery cover from here

Charging instruction

Plug the charging cable into the micro Type-c port of the device. The power indicator will turn red when charging. The red light goes out when fully charged. If you charging /discharging frequently, we recommend use charging cradle instead of Type-c cable.

Battery tips

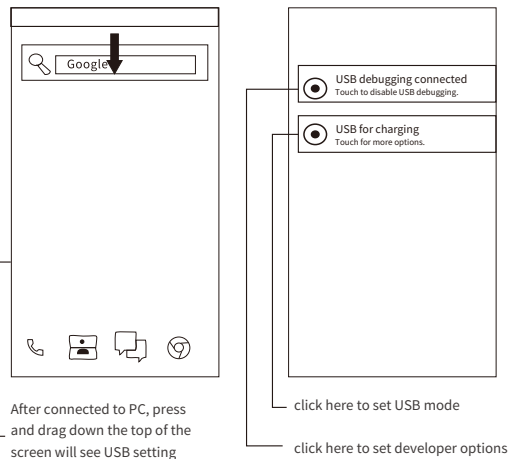
1. After receiving the device (including batteries), we recommend customer immediately start to use, if couldn't, store period should not exceed 3 months.
2. Please always charge battery in time after drain. Do not store battery with drain or full condition. We suggest keep battery capacity at around 50% when store.
3. Please use authorized charger to charge. Do not use 3rd party's cradle or adapter.
4. If not use the device for long period of time please keep the battery and the device separately.
5. The battery stored in warehouse, must charge/discharge once every 3 months, keep 60% to 70% capacity (i.e. 3.8V to 3.9V).
6. Lithium-ion battery should be stored in a cool, dry, ventilated environment, recommend to store between 0 to 28 degrees℃.
7. Do not use metal to contact or short circuit between two electrodes. Do not put device into overheating, excessive tide or decay environment. Do not squeeze or collision.

Transportation Notice

1. It's forbidden for transport when temperature is higher than 65℃.
2. The battery needs to be individual packed, do not directly stack without protection. Avoid battery electrodes contact to short circuit.
3. Suggest isolate each battery by bags, paper, foam or other isolation materials before pack in the carton.
4. Fill the room of carton by cushioning material before packing to avoid shaking.

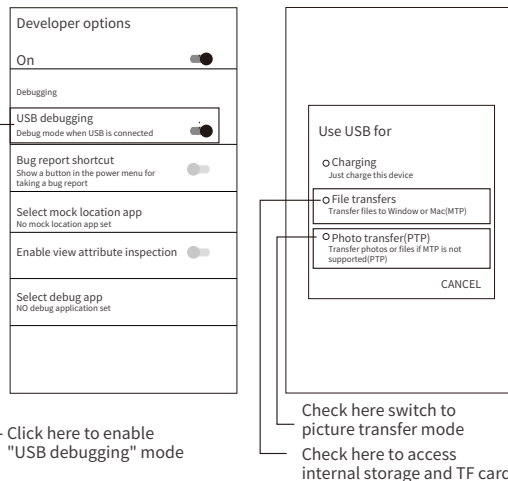
Instructions for connecting computer

1. Use the USB cable to connect the device to a USB port on your computer.
2. Open the notification panel and tap the USB connection icon.



After switching to "file transfer" mode, PC side can conduct data transfer and storage in "My computer".

Remark: The device storage will be taken as a mobile disk by PC. as a result, if installed another external storage card, two removable disks will be seen on My PC.



Precautions

1. Read all information in this guide before using the device to ensure safe and proper operation.
2. Please use the accessories that have been approved by Urovo and corresponds to this model. Use of any power source, charger, battery, etc. that has not been approved by Urovo may cause a fire, explosion, or other hazards.
3. Please use device and accessories within the specified temperature range. Equipment failure may occur when the ambient temperature is too high or too low.
4. Do not disassemble the product and its accessories. If the equipment or any of its components are not working properly,
5. The battery is made from a flammable and explosive material. Do not disassemble, squeeze, drop and make any other destructive operations on the battery. Do not place the battery in high temperatures.
6. Disposal of used batteries is subject to local relevant documents or policies regarding disposal of used batteries.

Warranty Policy

Thank you for using Urovo smart terminal series products. In the situation of quality problems, which arise from raw materials or production processes, during normal use of purchased products, UROVO TECHNOLOGY LTD. will be responsible for free maintenance within one year from the date of purchase. The company may provide repairs due to the user's failure to use the product according to the provided instructions of the product. However, corresponding service fee and component fee will be charged.

Warranty Terms:

1. Under normal circumstances, the warranty period of the device is 12 months (3 months for accessories), subject to the sales agreement.
2. During the product warranty period, under the normal use conditions (determined by our technical staff), the user will be entitled to a free warranty for damaged or faulty warranty parts.
3. During the warranty period, faults caused by repair, disassembly or modification of the product by a personnel other than our company, improper installation, improper use by the user (failure to follow instructions), serial number damage, accident or natural disaster, will not be covered under the warranty.
4. The warranty will expire immediately if any alterations are made to the warranty card.
5. Please show the equipment SN and purchase certificate for repair. The company reserves the right to interpret the above contents.

Place of Origin: Shenzhen, Quality Inspector: 024

UROVO TECHNOLOGY LTD.
Website: en.urovo.com



Note: The contents of the manual are subject to change without prior notice

FCC Caution

§ 15.19 Labeling requirements.

This device complies with part 15 of the FCC Rules. Operation is subject to the following two conditions: (1) This device may not cause harmful interference, and (2) this device must accept any interference received, including interference that may cause undesired operation.

§ 15.105 Information to the user.

Note: This equipment has been tested and found to comply with the limits for a Class B digital device, pursuant to part 15 of the FCC Rules. These limits are designed to provide reasonable protection against harmful interference in a residential installation. This equipment generates uses and can radiate radio frequency energy and, if not installed and used in accordance with the instructions, may cause harmful interference to radio communications. However, there is no guarantee that interference will not occur in a particular installation. If this equipment does cause harmful interference to radio or television reception, which can be determined by turning the equipment off and on, the user is encouraged to try to correct the interference by one or more of the following measures:

- Reorient or relocate the receiving antenna.
- Increase the separation between the equipment and receiver.
- Connect the equipment into an outlet on a circuit different from that to which the receiver is connected.
- Consult the dealer or an experienced radio/TV technician for help.

§ 15.21 Information to user.

Any Changes or modifications not expressly approved by the party responsible for compliance could void the user's authority to operate the equipment.

Body-Support Operation

This device was tested for typical body-Support operations. To comply with RF exposure requirements, a minimum separation distance of 1.0 cm must be maintained between the user's body and the handset, including the antenna. Third-party belt-clips, holsters, and similar accessories used by this device should not contain any metallic components.