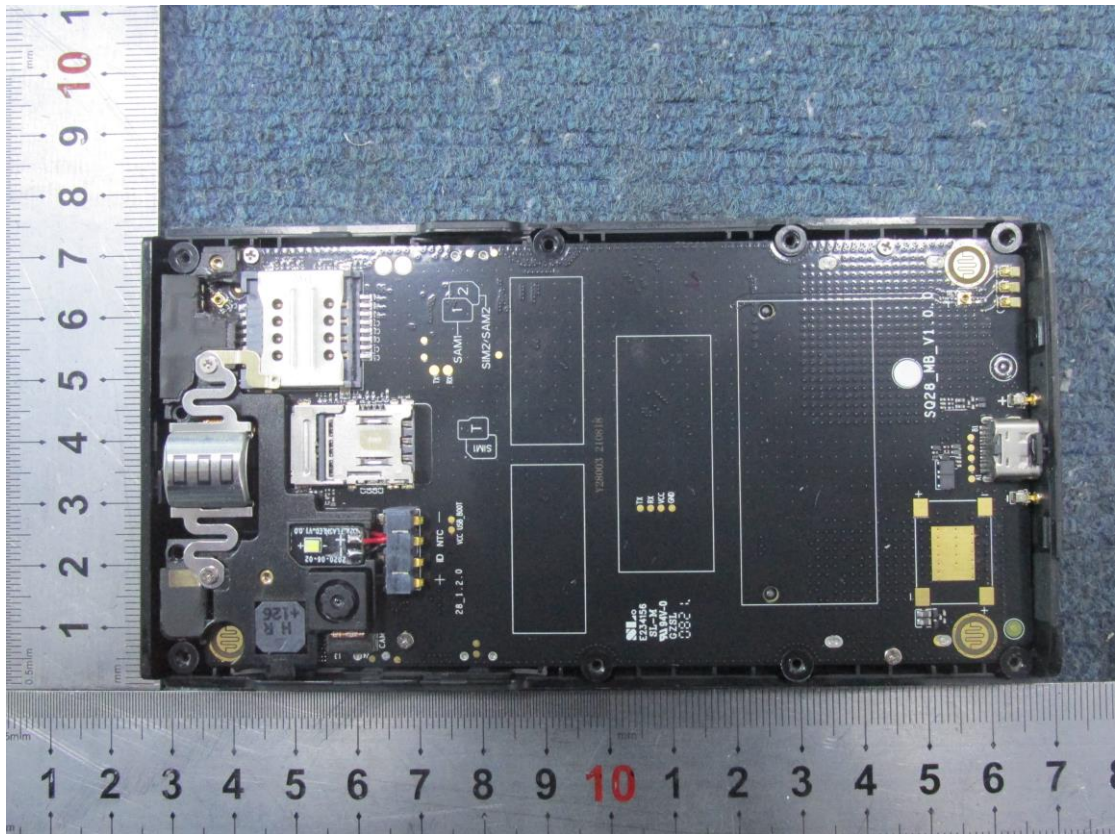
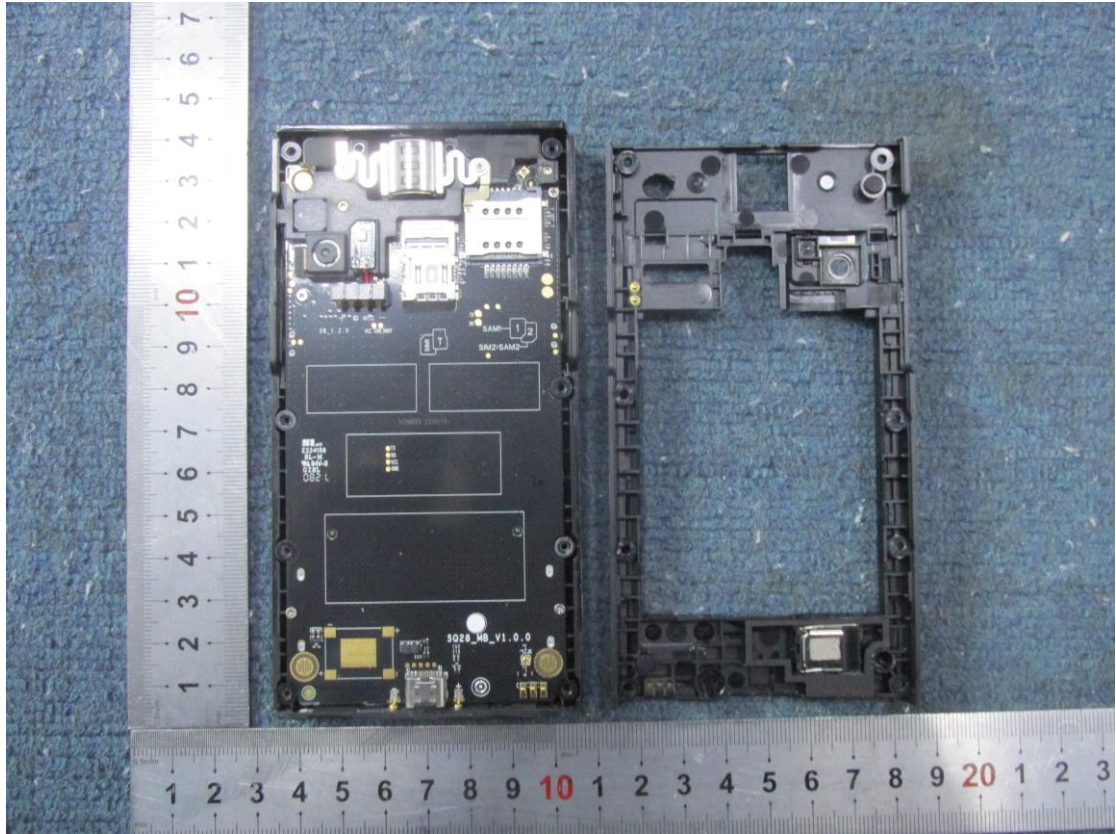
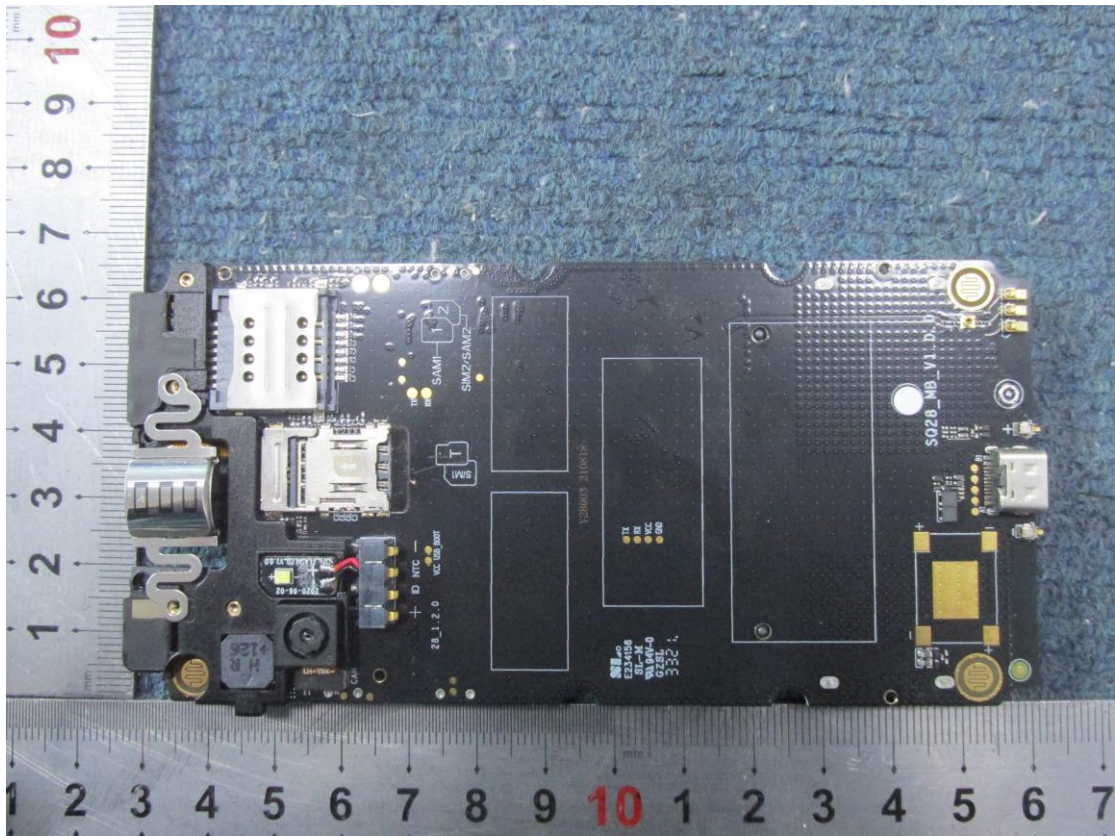
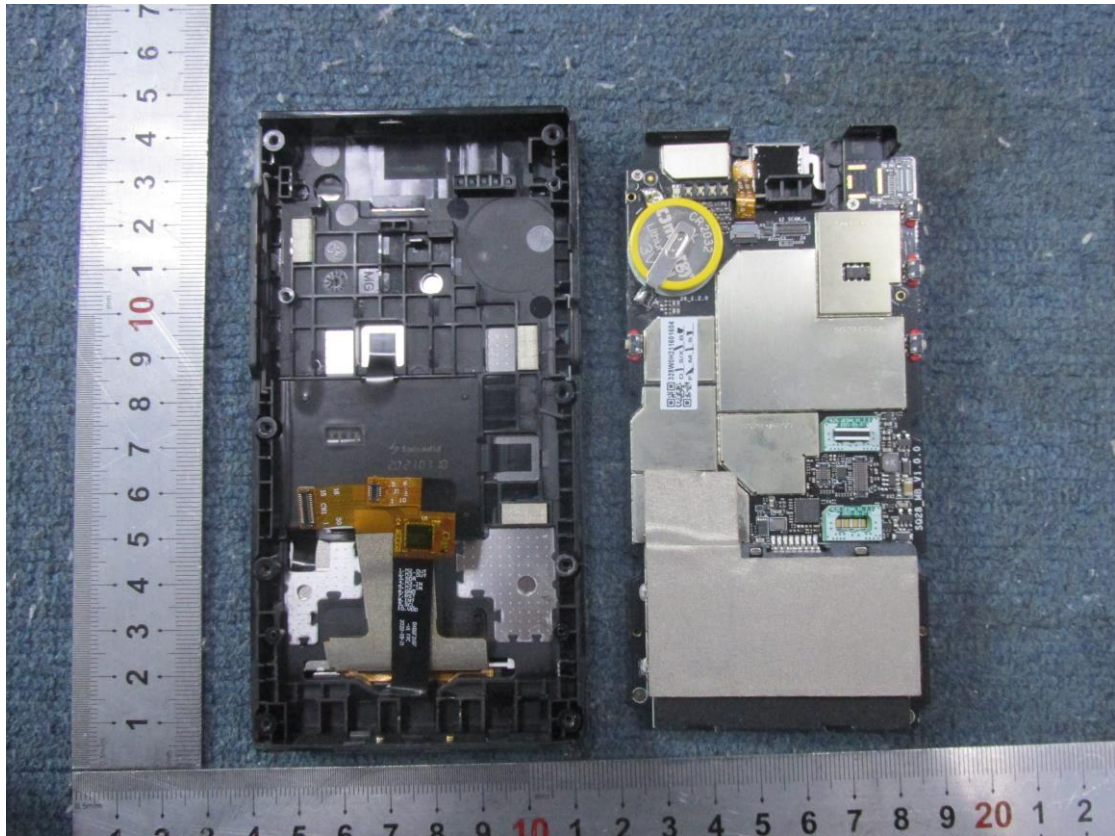
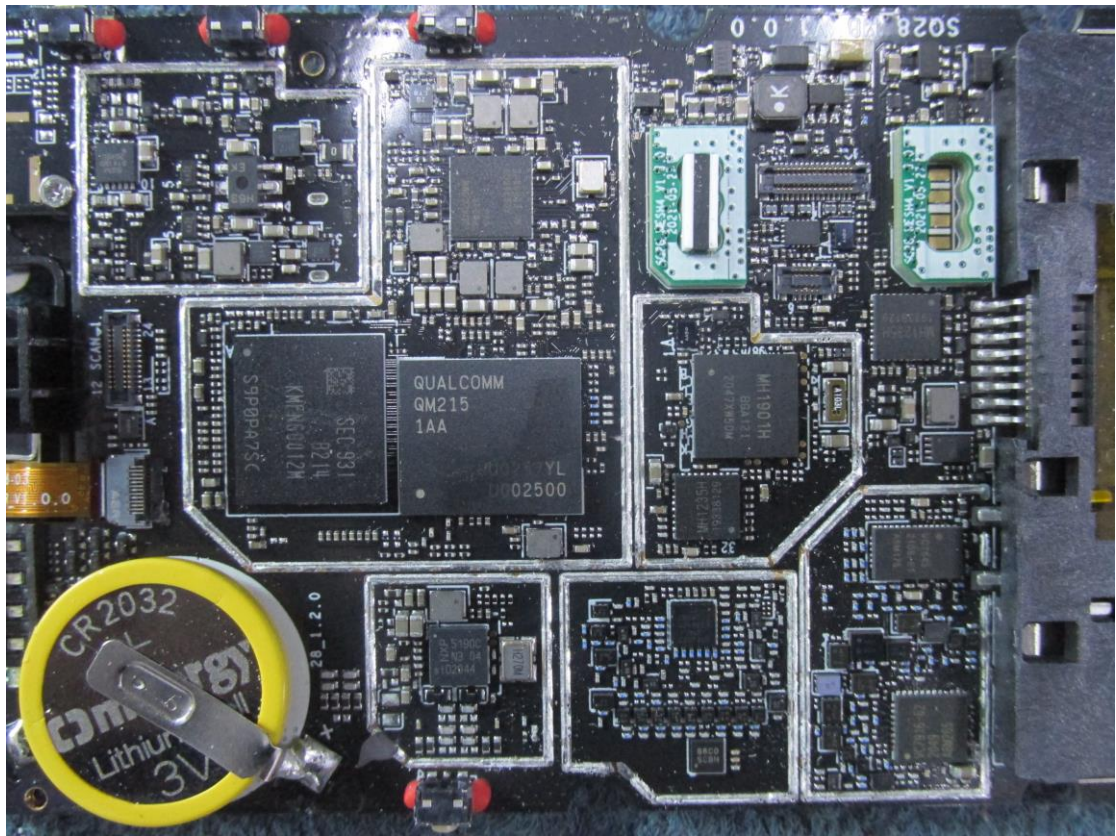
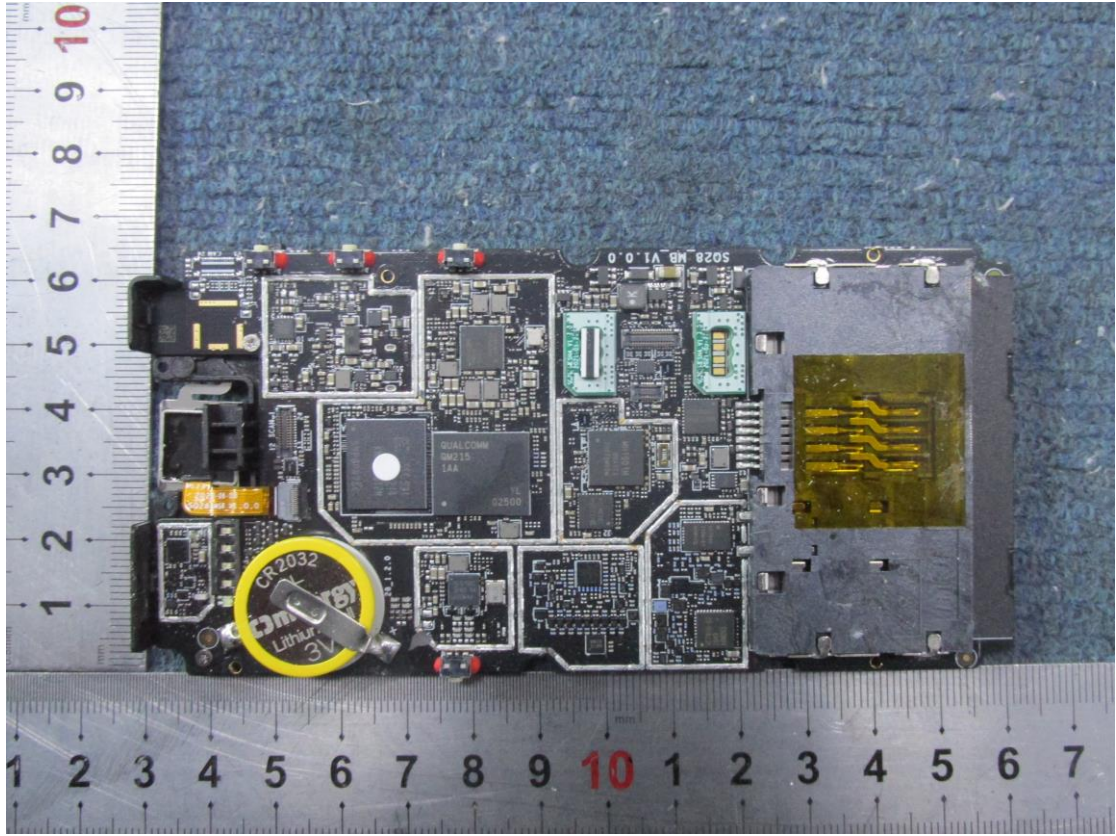


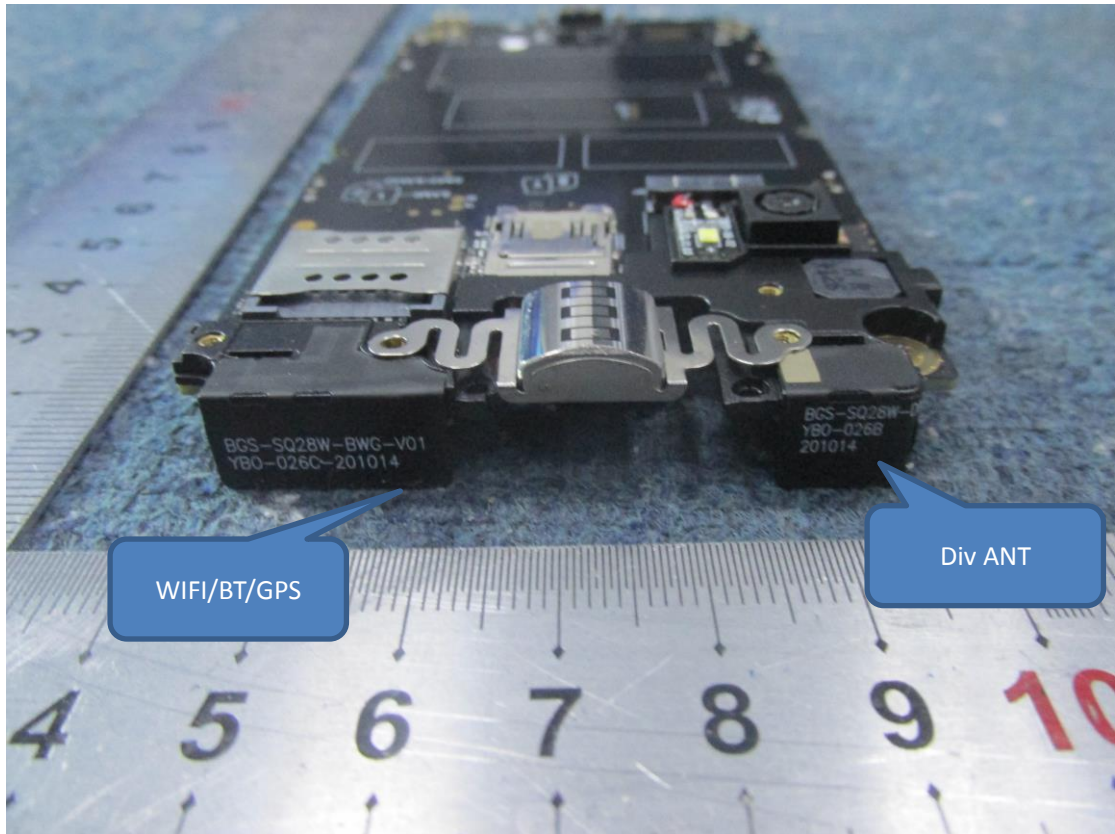


WWAN ANT









WIFI/BT/GPS

Div ANT



Rechargeable Li-ion Battery 可充电锂离子电池组 3.8V 9.5Wh

Model 型号: **HBL2000** Rated Capacity 额定容量: 2500mAh

Limited Charge Voltage 充电限制电压: 4.35V 二次锂电池组

Implementation Standard 执行标准: GB31241-2014 Rev: 1.0

**CAUTION:** Do not incinerate, disassemble, short terminals, or expose to high temperature. Risk of fire and explosion. Use specified charger only. Risk of explosion if the battery is replaced by an incorrect type. Dispose of batteries as required by local authorities.

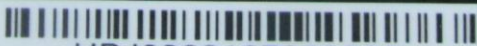
警告: 只能使用厂家指定充电器; 禁止拆解、挤压或投入火中; 如出现严重鼓胀, 请勿继续使用; 电池浸水后禁止使用; 请勿置于高温环境中。



①  
②  
③  
④  
⑤  
⑥  
⑦  
⑧  
⑨  
⑩

Made in China by Shenzhen Cholipower Technology Co., LTD

制造商: 深圳市金麒麟电源技术有限公司



HBJ0282107003206