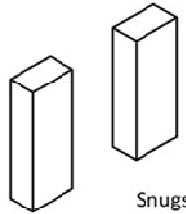


REVERE 2014 ACCESSORIES

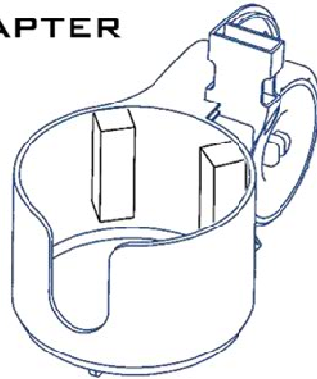
● 3.5" BRINE WELL ADAPTER

PART NO: R2014X011

(Included)

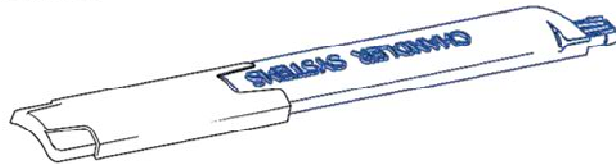


Snugs up the Revere Transmitter on smaller 3.5" Brine wells.



● 7" PADDLE EXTENSION

PART NO: R2014X012



Extends the Revere Paddle to accurately measure salt levels in larger brine tanks.

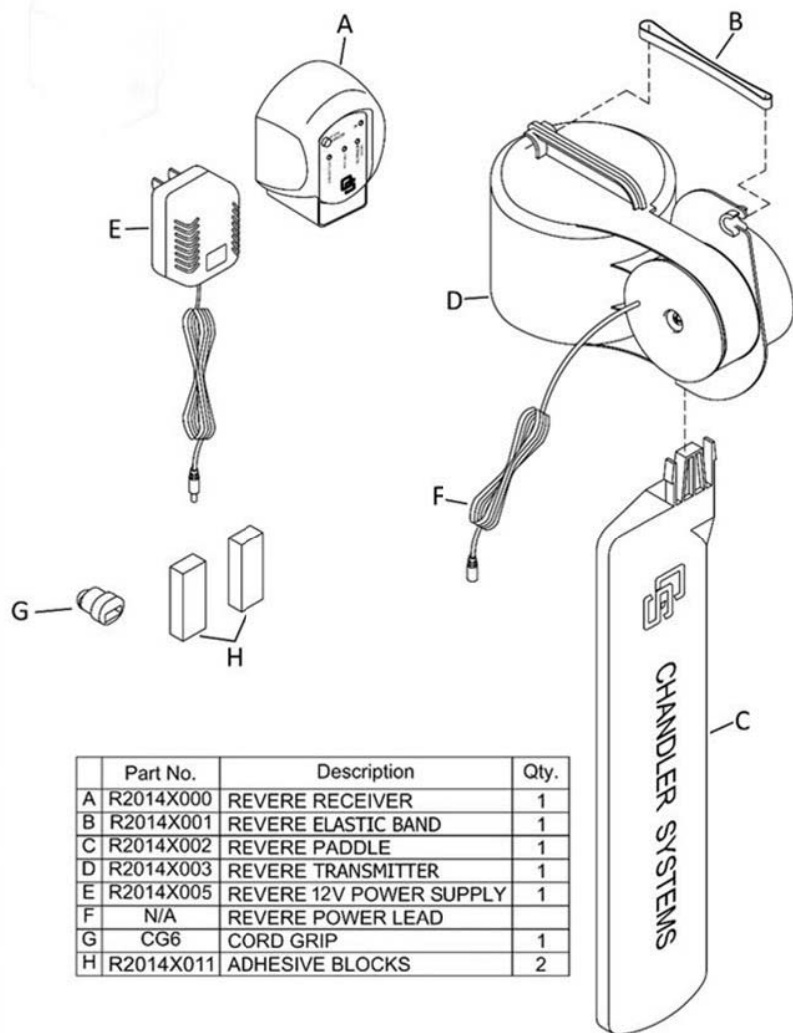
Extensions may also be added on top of each other to accommodate tanks requiring more than one extension.

Revere

R2014R1



Revere Salt Sensor



	Part No.	Description	Qty.
A	R2014X000	REVERE RECEIVER	1
B	R2014X001	REVERE ELASTIC BAND	1
C	R2014X002	REVERE PADDLE	1
D	R2014X003	REVERE TRANSMITTER	1
E	R2014X005	REVERE 12V POWER SUPPLY	1
F	N/A	REVERE POWER LEAD	
G	CG6	CORD GRIP	1
H	R2014X011	ADHESIVE BLOCKS	2

Pairing Replacement or Additional Receivers

In most cases you will not need to pair the units out of the box. Your Revere 2014 receiver and transmitter will be paired from the factory. The steps below are for pairing a replacement receiver with an already existing transmitter or for adding additional receivers, if desired.

Receivers previously paired will need to be un-paired. Hold CHECK/SILENCER while inserting the batteries into the receiver. Continue holding until all lights flash.

To pair a receiver to a transmitter:

- 1.) Unplug Transmitter
- 2.) Insert the batteries into the receiver. An alarm will sound and NO SENSOR SIGNAL indicator will flash when the receiver is ready.
- 3.) Plug in the transmitter
- 4.) Once units are bound, the alarm beeps once and the receiver will show the current status of the salt level sensor.

- If the receiver can't find a sensor to pair with, all indicators will flash together. Once the receiver finds a sensor the two will automatically pair and the OK indicator will flash and the alarm beeps. For the best results when pairing units, stay within close proximity to each other. Units can only pair within the first 15 seconds after the receiver powers up.

Frequently Asked Questions and Answers

- I added salt, but my receiver is still reading low salt.

To conserve battery life, the receiver sleeps and wakes up every 30 minutes. It could take up to 30 minutes for the receiver to update after salt is added. To immediately update the status, press the CHECK/SILENCER button.

- My receiver shows low salt, but its not beeping.

The audible beeps have been turned off. See note 2 on Pg. 4 for enabling the audible beeps.

- My receiver is showing no signal in an area that was fine before.

Transmitter doesn't have power, or it is periodically picking up noise from another device in the home. Wait to see if status returns or move to an alternate location.

- My receiver doesn't have any lights on.

The receiver is currently in sleep mode, or the batteries are dead. Press CHECK/SILENCER button, if green indicator appears everything is fine. If no lights appear when CHECK/SILENCER is pressed the batteries will need replaced.

- My transmitter doesnt fit snugly over my brine well.

The transmitter was designed to fit 4" brine wells. However, a less common size is 3.5" and adapters are Included for them as well.

-See Back Page For Installation location

- My receiver periodically flashes a green light.

Everything is okay and your salt level is adequate. The receiver goes to sleep to conserve battery life and wakes up every 30 minutes to check the status. For the one minute it is awake every half hour, the receiver displays the status. Please note you can check the status at any time by pressing the CHECK/SILENCER button.

For an Installation Tutorial video please visit:
<http://www.youtube.com/watch?v=-UGf0AGef8U>



Transmitter Installation

- 1.) Attach Revere Transmitter (D) to Paddle (C).
- 2.) Slide Transmitter with Paddle over brine well.
-Note: The transmitter should fit snug on the brine well. Adapter (H) may be required if its loose. (See Back Page For Drawing)
- 3.) Drill 9/16" size hole into the side of the brine tank. Make sure hole is beside the same side as the power lead. As shown in Figure A
- 4.) Pull power lead (F) through hole. See Figure A

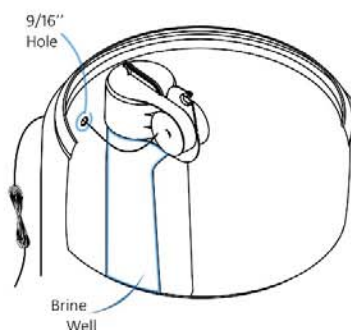


Figure A

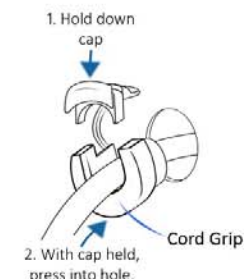


Figure B

- 5.) With the power lead fully through, place cord grip (G) over the power lead, close to the brine tank's outer edge. Then push the cord grip through the hole drilled in step 3. See Figure B
- 6.) After plugging in power supply (E) to an outlet, connect the transmitter's power lead (F) to the power supply.
- 7.) Add salt, making sure paddle is flush against the brine well and you're pouring towards it so that salt doesnt get between the paddle and the brine well.
- 8.) Place elastic band (B) over the top of the transmitter and replace brine tank lid.

-Your Revere transmitter is now ready to go!
(Turn the page for receiver setup instructions)

Receiver Setup

- 1.) Go to the desired receiver location with the unit.
- 2.) Remove tab from battery door.
- 3.) Then press the CHECK/SILENCER button. If location is adequate, the green OK indicator light will flash. If the No Signal red indicator is present, you will need to move to an alternate location where a signal is received.

Testing & Normal Operation

Pressing the CHECK/SILENCER button allows users to quickly test the connectivity between the receiver and transmitter. Users are able to use this to find the optimal location to place the receiver or check the functionality of the product.

Under Normal Operation the Receiver's LED lights will remain off and the receiver will wake up every 30 minutes. The OK indicator will blink for one minute every half hour when the receiver wakes up and checks status.

WARRANTY INFORMATION

Chandler Systems Inc. warrants this product to be free of defects in workmanship and material, under normal use conditions, for a period of 90 days from the original date of installation.

Should this product fail, please return it to the point of purchase. Chandler Systems Inc. will, at its discretion, replace product with out charge. This decision is subject to verification of defect upon delivery to the factory service center. The product must include proof of purchase that consists of the date of installation.

Indication Lights and Audible Beeps

LOW BATTERY: Red indicator will flash when the receiver's batteries are low.

ADD SALT: Yellow indicator will flash when there's not enough salt to keep the paddle flush with the brine well.

NO SENSOR SIGNAL: Red indicator will flash when the signal is blocked or weak and can not reach the receiver. It could also mean they're not paired.

OK: Green indicator will flash when the salt level inside the brine tank is fine.

Audible BEEP: Sounds during the add salt, low battery, no sensor signal condition an audible beep will be produced once every minute.

-Note:

1.) Pressing the CHECK/SILENCER button will mute the receiver for 48 hours and will return if no salt is added within that time.

2.) Hold in CHECK/SILENCER to enable/disable the audible beeps permanently. Holding it in for 5 seconds until you hear one beep indicates them being disabled. If two beeps are heard, they are enabled.



Receiver

FCC IDs:

Receiver: SWP-R2014R1

Transmitter: SWP-R2014R3

These devices complies with Part 15 of the FCC Rules. Operation is subject to the following two conditions: (1) these devices may not cause harmful interference, and (2) these devices must accept any interference received, including interference that may cause undesired operation. Changes or modifications not expressly approved by the party responsible for compliance could void the user's authority to operate the equipment.

NOTE: These equipments have been tested and found to comply with the limits for a Class B digital device, pursuant to Part 15 of the FCC Rules. These limits are designed to provide reasonable protection against harmful interference in a residential installation. These equipments generate, use and can radiate radio frequency energy and, if not installed and used in accordance with the instructions, may cause harmful interference to radio communications. However, there is no guarantee that interference will not occur in a particular installation. If these equipments do cause harmful interference to radio or television reception, which can be determined by turning the equipment off and on, the user is encouraged to try to correct the interference by one or more of the following measures:

- Reorient or relocate the receiving antenna.
- Increase the separation between the equipment and receiver.
- Connect the equipment into an outlet on a circuit different from that to which the receiver is connected.
- Consult the dealer or an experienced radio/TV technician for help.

Patent Pending
Rev. 4.2