

Z-Wave USB Dongle

User's Manual

ABOUT THIS MANUAL

This manual is designed for use with the Z-Wave USB Dongle. Information in this document has been carefully checked for accuracy; however, no guarantee is given to the correctness of the contents. The information in this document is subject to change without notice. The manufacturer does not make any representations or warranties (implied or otherwise) regarding the accuracy and completeness of this document and shall in no event be liable for any loss of profit or any commercial damage, including but not limited to special, incidental, consequential, or other damage.

SAFETY INSTRUCTIONS

Always read the safety instructions carefully:

- Keep this User's Manual for future reference
- Keep this equipment away from humidity
- If any of the following situation arises, get the equipment checked by a service technician:
 - The equipment has been exposed to moisture.
 - The equipment has been dropped and damaged.
 - The equipment has obvious sign of breakage.
 - The equipment has not been working well or you cannot get it to work according to the User's Manual.

COPYRIGHT

This document contains proprietary information protected by copyright. All right are reserved. No part of this manual may be reproduced by any mechanical, electronic or other means, in any form, without prior written permission of the manufacturer.

TRADEMARKS

All trademarks and registered trademarks are the property of their respective owners or companies.

Table of Contents

1. Introduction	1
Features	1
Package Contents	2
System Requirements.....	2
Applicable for Serial Products of Z-Wave.....	2
2. Installation	3
On Windows XP and 2000	3
On Windows Vista and 7.....	5
3. Specifications.....	7
4. Regulatory Compliance.....	8
FCC Conditions	8
CE	8
WEEE Information	8

1. Introduction

This **Z-Wave USB Dongle** enables you to access your USB devices without limitation caused by wire. This Dongle is designed to adapt your regular USB 2.0 interface to a Wireless USB interface. Simply plug this dongle to your USB socket then the notebook turns into a wireless USB enabled platform, access your Z-Wave USB devices such as printer, scanner freely without boundary up to 10 meters. Just plug the dongle in, then enjoy the freedom and take the advantage of operation wirelessly with the latest Wireless USB technology.



Features

- Simply plug in PC/Notebook USB port with driver installation
- Fully compatible with Z-wave enable network that can communicate with any Z-wave certified device.

Package Contents

- Z-Wave USB Dongle x1
- CD (Driver and User's Manual) x1
- Quick Installation Guide x1

System Requirements

- Windows® 2000, XP, Vista™, Windows® 7

Applicable For Serial Product of Z-Wave

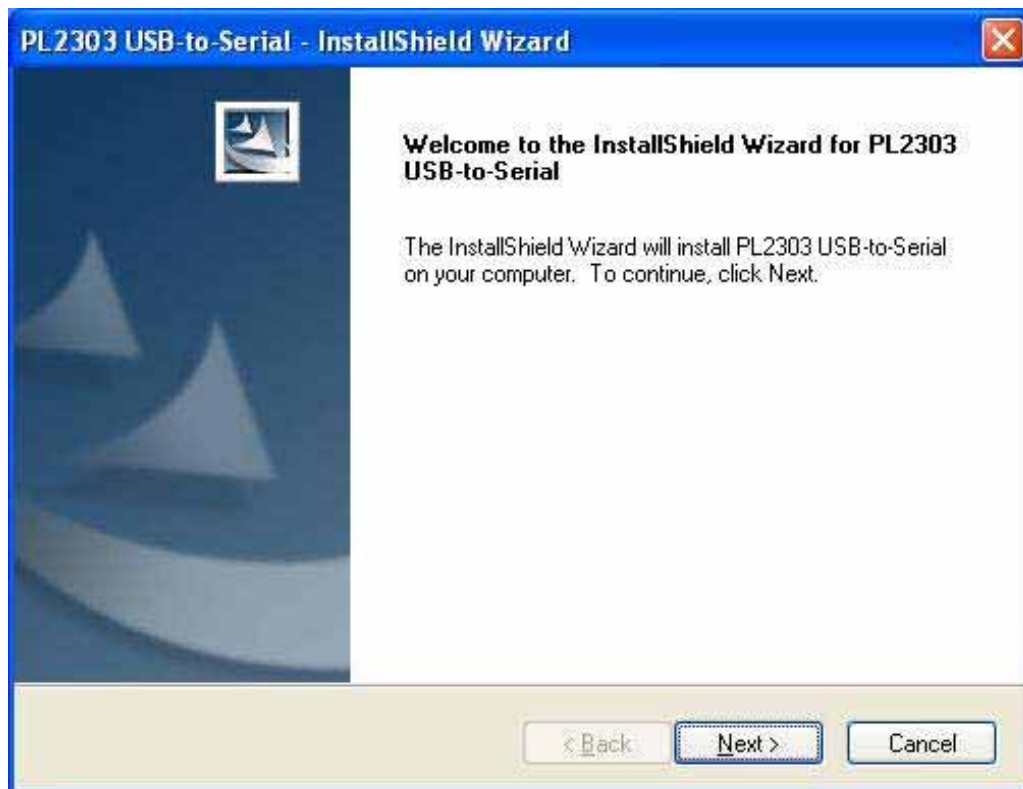
Z-Wave dongle is Z-WaveR-Certified software and is compatible with Z-Wave Certified devices. Z-Wave standard is designed to ensure that Z-Wave-Certified devices work together, regardless of manufacturer. Z-Wave devices can also act as repeaters, re-transmitting RF signals around obstacles and radio dead spots to help ensure that messages are successfully delivered.

2. Installation

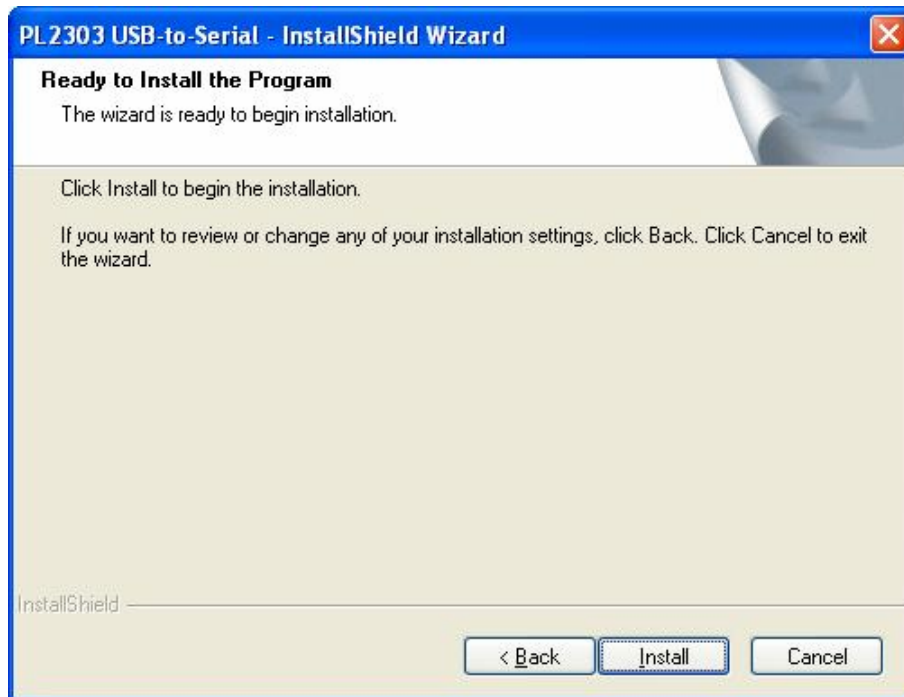
On Windows XP and 2000

To install Driver:

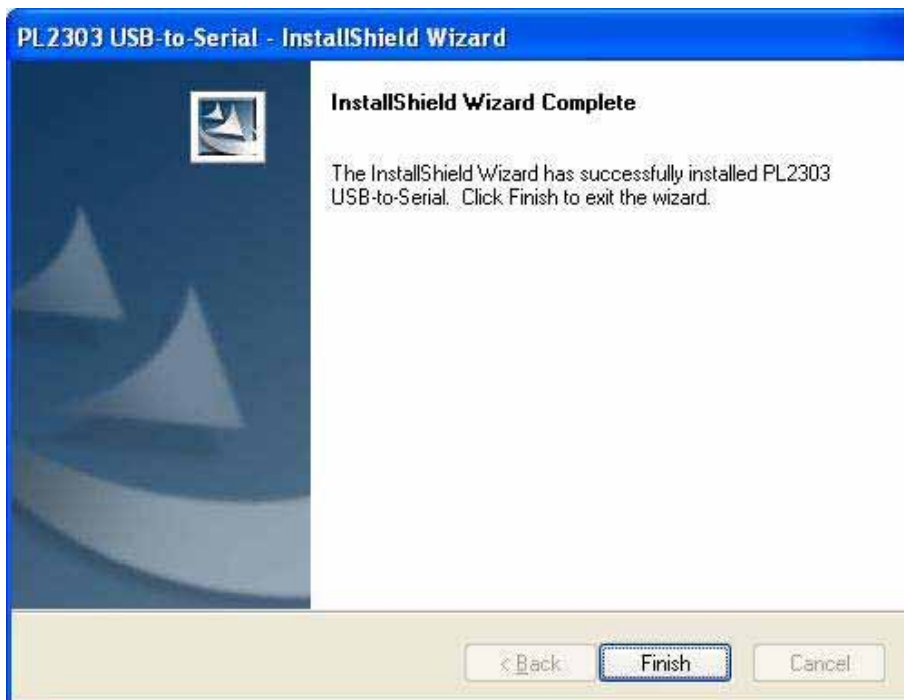
1. Insert the provided CD into disk drive. Click Next to the **Next** step for installation.



2. Click **Install** to begin the installation.



3. Click **Finish** to exit the wizard.



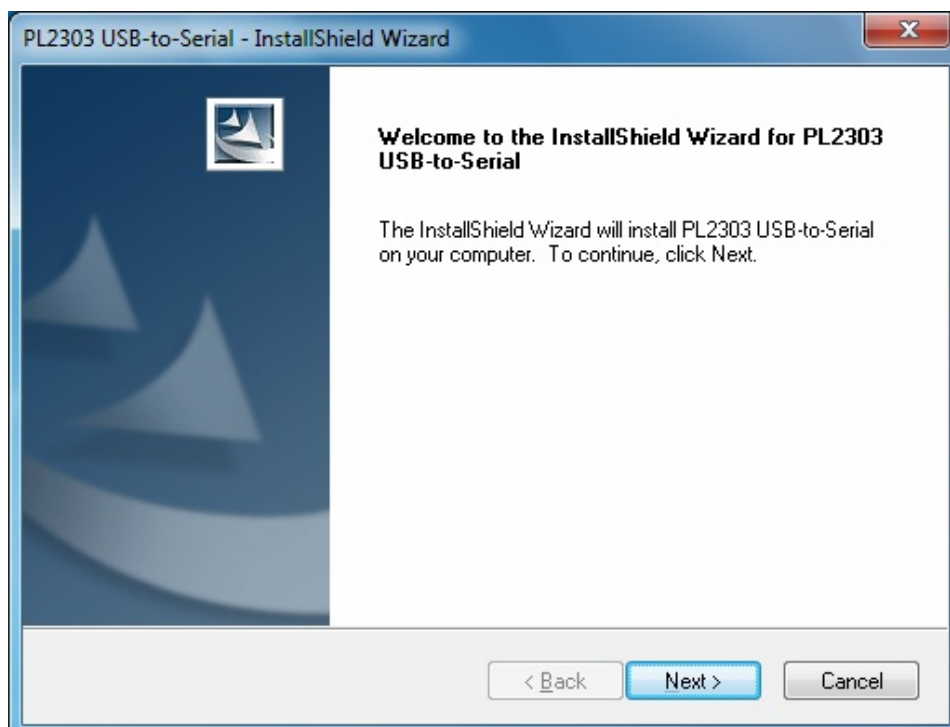
4. Please Plug in Z-Wave USB Dongle to the USB Port on your PC.



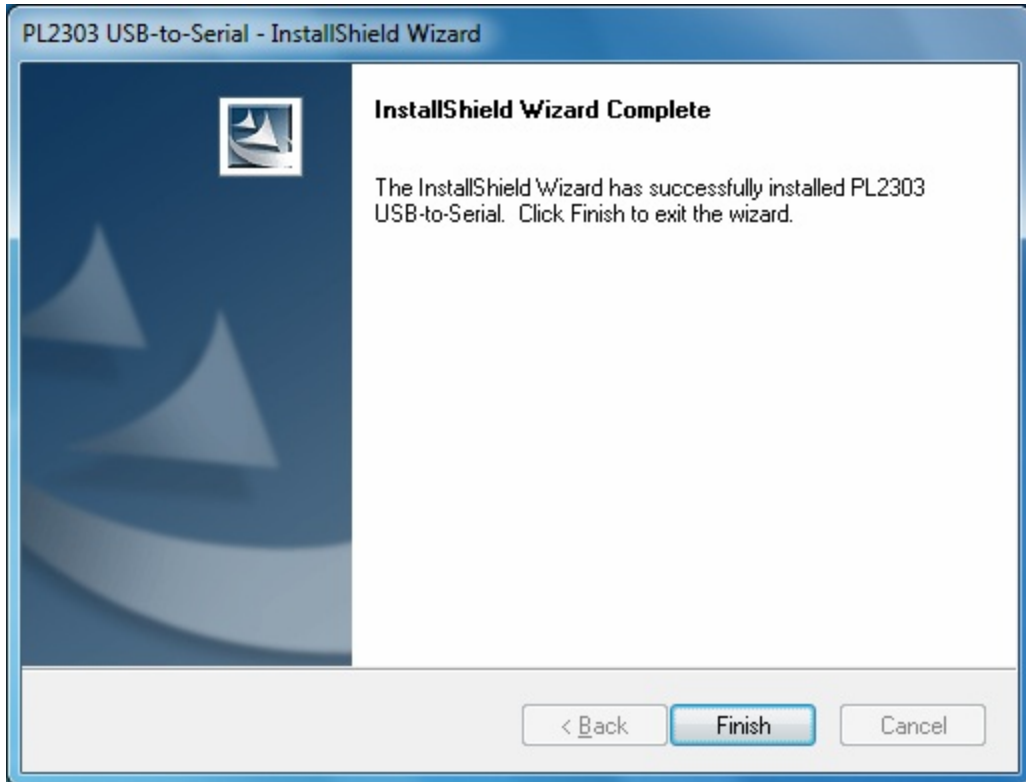
On Windows Vista and 7

To install Driver:

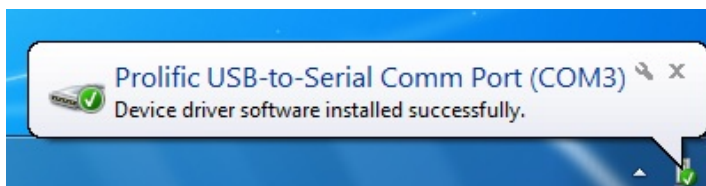
1. Insert the provided CD into your disc drive, locate and double-click the **Setup.exe** file under **E:\Driver** where E is your disc drive letter. Click **Next** to the next step for installation.



2. Click **Finish** to exit the wizard.



3. Please Plug in Z-Wave USB Dongle to the USB Port on your PC.



3. Specifications

Protocol	Z-Wave USB Dongle
User Interface	USB A-Type Plug
USB Compliance	USB 2.0 specification; backward compatible with USB 1.1
Transmit Power	94.92 dB μ V/m
Frequency	908.42MHz
Transmit Data Rate	9.6 kbps, 40 kbps
RF range	15m indoor, 30m outdoor
Housing	Plastic
Dimension	59(L)X26(W)X12.4(H)mm (Not include USB A-Type Plug)
Weight	Approximately 11g
Operation temperature	10-40°C
Storage temperature	-10~80°C
Relative Humidity	0~80% non-condensing

4. Regulatory Compliance

FCC Conditions

This equipment has been tested and found to comply with the limits for a Class B digital □ device, pursuant to part 15 of the FCC rules. These limits are designed to provide reasonable □ protection against harmful interference in a residential installation. This equipment generates, □ uses and can radiate radio frequency energy and, if not installed and used in accordance with □ the instructions, may cause harmful interference to radio communications. However, there is □ no guarantee that interference will not occur in a particular installation. If this equipment □ does cause harmful interference to radio or television reception, which can be determined by □ turning the equipment off and on, the user is encouraged to try to correct the interference by □ one or more of the following measures:□

-Reorient or relocate the receiving antenna.□

-Increase the separation between the equipment and receiver.□

-Connect the equipment into an outlet on a circuit different from that to which the receiver □ is connected.□

-Consult the dealer or an experienced radio/TV technician for help.□

□

You are cautioned that changes or modifications not expressly approved by the party □ responsible for compliance could void your authority to operate the equipment.□

□

This device complies with Part 15 of the FCC Rules. Operation is subject to the following two □ conditions: (1) this device may not cause harmful interference and (2) this device must accept □ any interference received, including interference that may cause undesired operation□

CE

This equipment is in compliance with the requirements of the following regulations: EN 55 022: CLASS B

WEEE Information

For EU (European Union) member users:

According to the WEEE (Waste electrical and electronic equipment) Directive, do not dispose of this product as household waste or commercial waste. Waste electrical and electronic equipment should be appropriately collected and recycled as required by practices established for your country. For information on recycling of this product, please contact your local authorities, your household waste disposal service or the shop where you purchased the product.

