

NDW6000Z1

Wireless Display 1 Pair Dongle

TX & RX

Pairing SOP Manual

Rev 1.0



ABOUT NDW6000Z1

NDW6010Z1

Wireless Display TX Dongle

The NDW6010Z1, with USB-C support and DP Alt mode, ensures seamless cross-platform connectivity with Windows, macOS, and ChromeOS on PCs or tablets.

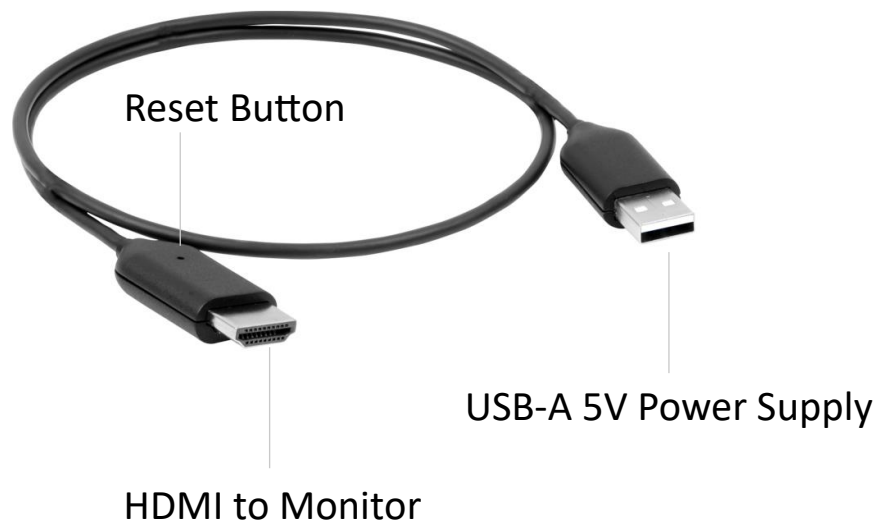
USB-C with DP Alt Mode



NDW6020Z1

Wireless Display RX Dongle

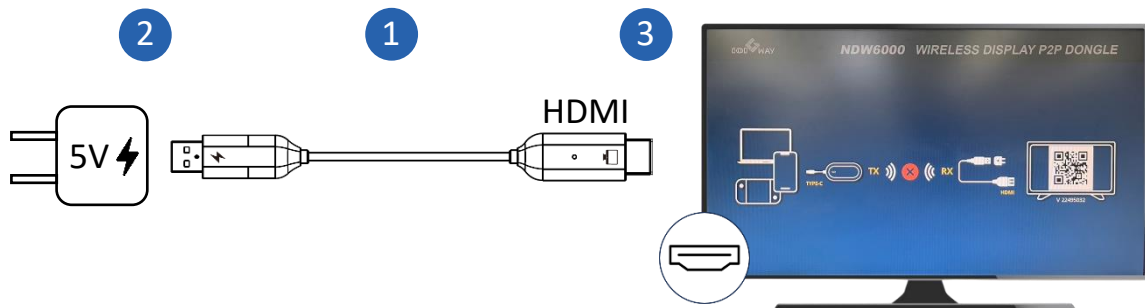
The NDW6020Z1 includes an HDMI connection for TV and monitors compatibility.



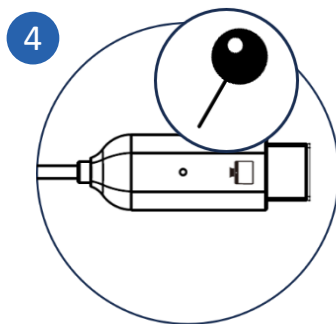
PAIRING PROCESS

1> Initiate the RX Dongle

- 1) Confirm the “RX Device” of NDW6000Z1.
- 2) Connect the USB-A side to the power source.
- 3) After booting, enter the main interface.

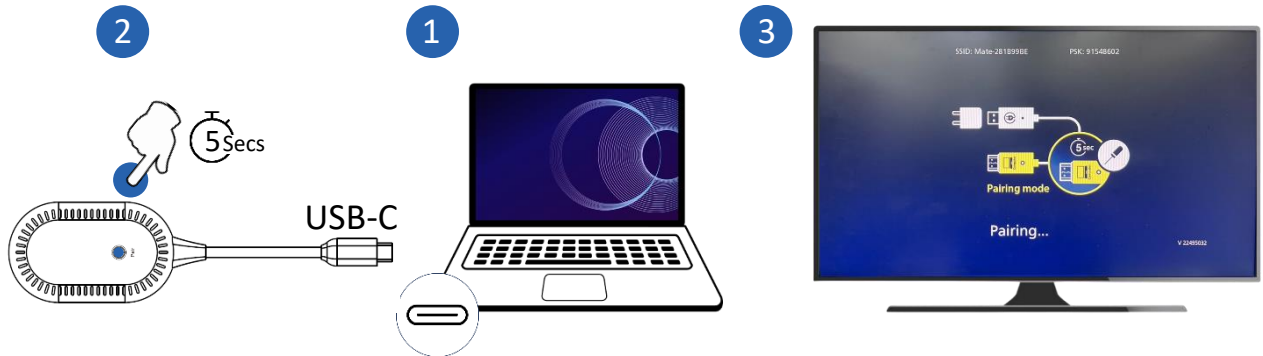


- 4) Press and hold the button on RX to display the pairing prompt.
- 5) Confirm that the version number, SSID display and version number of the interface are normal and OK.



2> Press the Pair Button on the TX Dongle to Pair

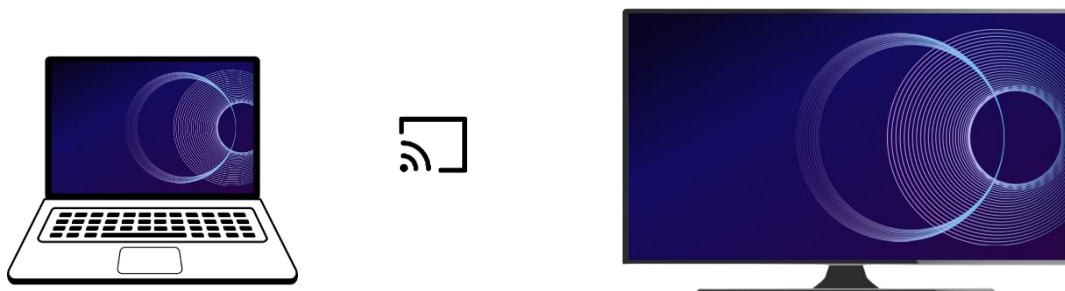
- 1) Confirm the "TX Device" of NDW6000Z1 and connect to the device.
- 2) Press and hold the Pair button on the TX for about 5 seconds until the light stops. About 1 second after the light stops, the light will flash faster.
- 3) At this time, release the button to start pairing (TX/RX).



- 4) Confirm that "Pairing OK" is displayed, the screen is normal and OK.



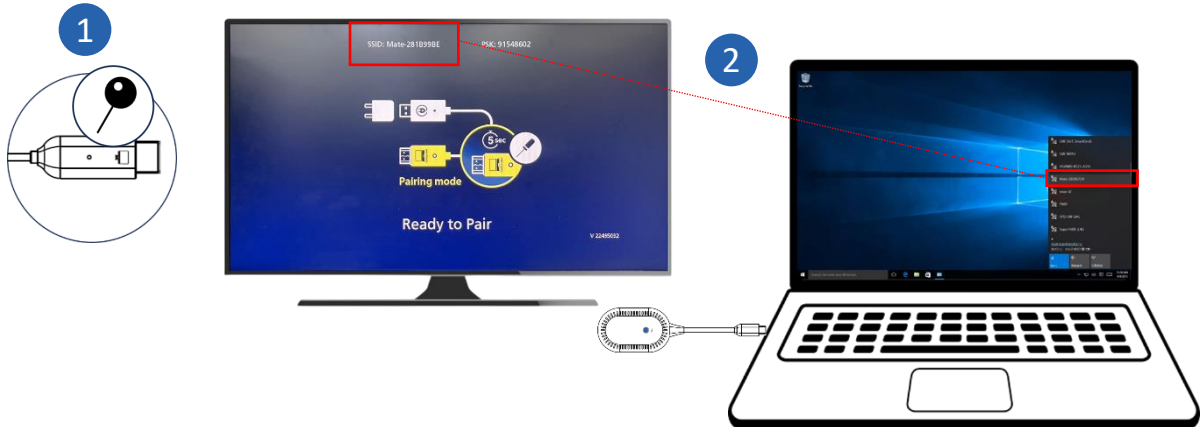
- 5) The pairing process is completed, mirroring the content of the device's screen to the monitor.



FIRMWARE UPGRADE

1> Connect to the Setting Page

- 1) Press and hold the button on RX to display the pairing prompt. Confirm that “Ready to Pair” is displayed.
- 2) Find the SSID displayed. Open the Wi-Fi settings on the device, locate this SSID in the Wi-Fi list, and connect to it



- 3) When the connectivity is completed, open the device’s web browser and enter the IP address “192.168.203.1” into the settings page.

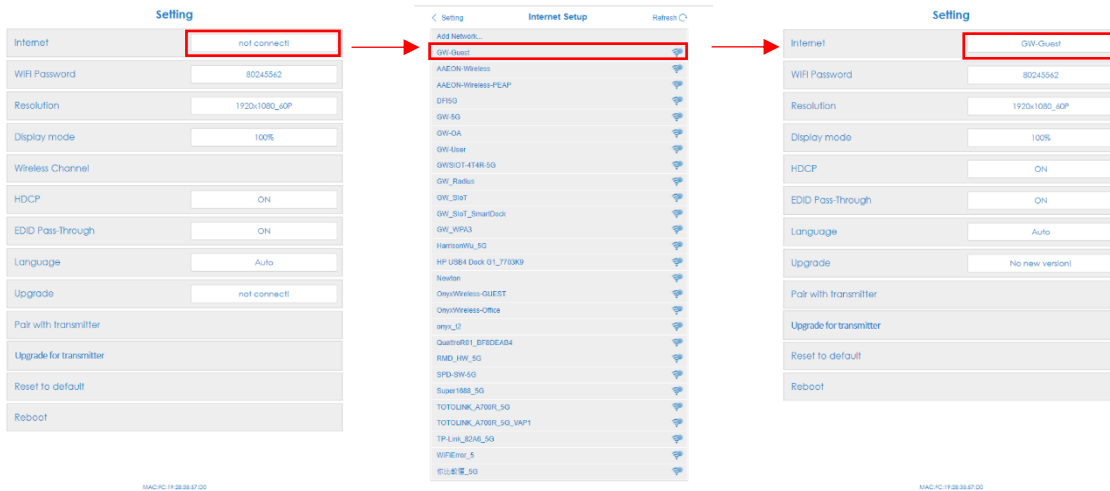


Setting	
Internet	not connect!
WIFI Password	80245562
Resolution	1920x1080_60P
Display mode	100%
Wireless Channel	
HDCP	ON
EDID Pass-Through	ON
Language	Auto
Upgrade	not connect!
Pair with transmitter	
Upgrade for transmitter	
Reset to default	
Reboot	

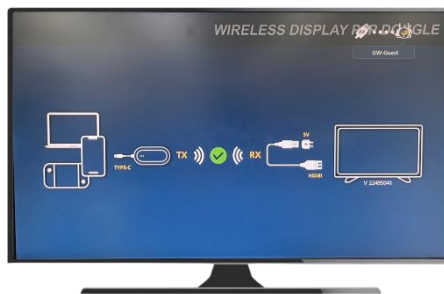
MAC:PC:19-28:38:57:00

2> Connect Internet and Start Upgrading

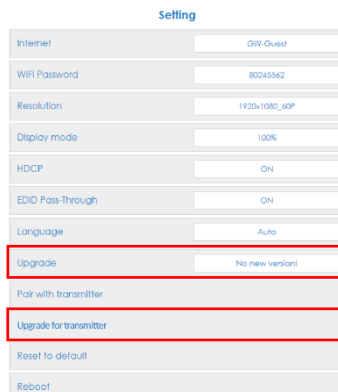
- 1) When entering the setting page, select the router you want to connect to.



- 2) After configuring and establishing connectivity, the NDW600Z1's standby page will switch as follows.



- 3) Return to setting page and click "Upgrade for transmitter" to start upgrading the TX dongle's firmware; click "Upgrade" to start upgrading the RX dongle's firmware.



FCC Warning:

This device complies with Part 15 of the FCC Rules. Operation is subject to the following two conditions: (1) this device may not cause harmful interference, and (2) this device must accept any interference received, including interference that may cause undesired operation.

This equipment has been tested and found to comply with the limits for a Class B digital device, pursuant to part 15 of the FCC Rules. These limits are designed to provide reasonable protection against harmful interference in a residential installation. This equipment generates, uses and can radiate radio frequency energy and, if not installed and used in accordance with the instructions, may cause harmful interference to radio communications. However, there is no guarantee that interference will not occur in a particular installation. If this equipment does cause harmful interference to radio or television reception, which can be determined by turning the equipment off and on, the user is encouraged to try to correct the interference by one or more of the following measures:

- Reorient or relocate the receiving antenna.
- Increase the separation between the equipment and receiver.
- Connect the equipment into an outlet on a circuit different from that to which the receiver is connected.
- Consult the dealer or an experienced radio/TV technician for help.

Any changes or modifications not expressly approved by the party responsible for compliance could void the authority to operate equipment.

This device and its antenna must not be co-located or operating in conjunction with any other antenna or transmitter.

This device complies with FCC RF radiation exposure limits set forth for an uncontrolled environment. Both the cradle and the scanner should be installed and operated with a minimum distance of 20 cm between the radiator and your body. Proper use of this device ensures that exposure to RF energy is minimized and within the FCC guidelines.



IC Warning :

IC Radiation Exposure Statement:

mobile device

This equipment complies with ISED radiation exposure limits set forth for an uncontrolled environment. This equipment should be installed and operated with minimum distance 20cm between the radiator & your body.

portable device (SAR)

This equipment complies with ISED radiation exposure limits set forth for an uncontrolled environment. End user must follow the specific operating instructions for satisfying RF exposure compliance. The portable device is designed to meet the requirements for exposure to radio waves established by the ISED. These requirements set a SAR limit of 1.6 W/kg averaged over one gram of tissue. The highest SAR value reported under this standard during product certification for use when properly worn on the body.

IC Avertissement français:

Déclaration d'exposition aux rayonnements IC :

appareil mobile

Cet équipement est conforme aux limites d'exposition aux rayonnements d'ISDE établies pour un environnement non contrôlé.

Cet équipement doit être installé et utilisé avec une distance minimale de 20 cm entre le radiateur et votre corps.

appareil portable (SAR)

Cet équipement est conforme aux limites d'exposition aux rayonnements d'ISDE établies pour un environnement non contrôlé.

L'utilisateur final doit suivre les instructions d'utilisation spécifiques pour satisfaire à la conformité en matière d'exposition aux RF. L'appareil portable est conçu pour répondre aux exigences d'exposition aux ondes radio établies par ISDE. Ces exigences fixent une limite DAS de 1,6 W/kg en moyenne sur un gramme de tissu. La valeur SAR la plus élevée signalée dans le cadre de cette norme lors de la certification du produit pour une utilisation lorsqu'il est correctement porté sur le corps.

