

MomentoTM

It works with memory cards.

It works with USB.



It's better with wireless.

More pictures.

More options.

MomentoTM Live.

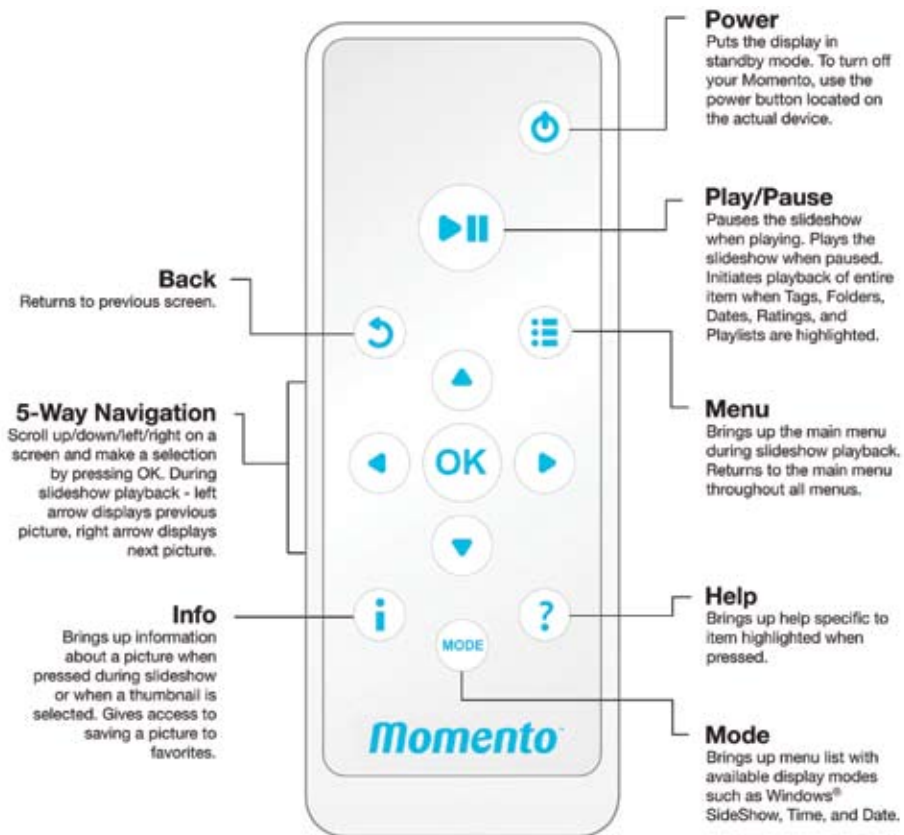
Set up your MomentoTM with your
computer as your picture source.

Look inside for details.

Certified for Windows VistaTM
Windows[®] XP Compatible

i-mateTM

Remote Control Overview



Thank you for choosing Momento™.

For additional information, support, and to register go to www.momentolive.com.

For safety reasons, if the line voltage has not stabilized, the product will restart itself automatically.

i-mate™

© 2006 i-mate. All rights reserved.

CE FC

Frequently Asked Questions

Q. How do I change the transition?

A. Select **MENU>Momento Settings>Slideshow**. The transition speed and type can be set to your preference.

Q. How do I set power savings?

A. Select **MENU>Momento Settings>Frame>Power**.

Q. How do I view a single picture?

A. Press pause when the picture is being displayed in the slideshow.

Q. What is a tag?

A. A tag is a feature of Windows Vista™ that works like keywords. You can attach tags to your pictures, which will allow you to organize and view your pictures based on a specific word or phrase. For information on using Tags on your computer running Windows Vista™ select Start>Help and Support and enter Tags in the search field.

Q. How do I change the wireless network I am connected to?

A. Select **MENU>Momento Settings>Wireless Network>Find networks**. A list of available networks will be displayed.

Q. How do I change the computer I am connected to?

A. Select **MENU>Momento Settings>Computer**.

Q. How do I reboot my Momento?

A. Press the power button located on the side of your Momento just above the audio jack.

Q. How can I turn on the clock and calendar?

A. While a slideshow is playing, press Mode on your remote, then place a checkmark next to time and/or date then select OK.

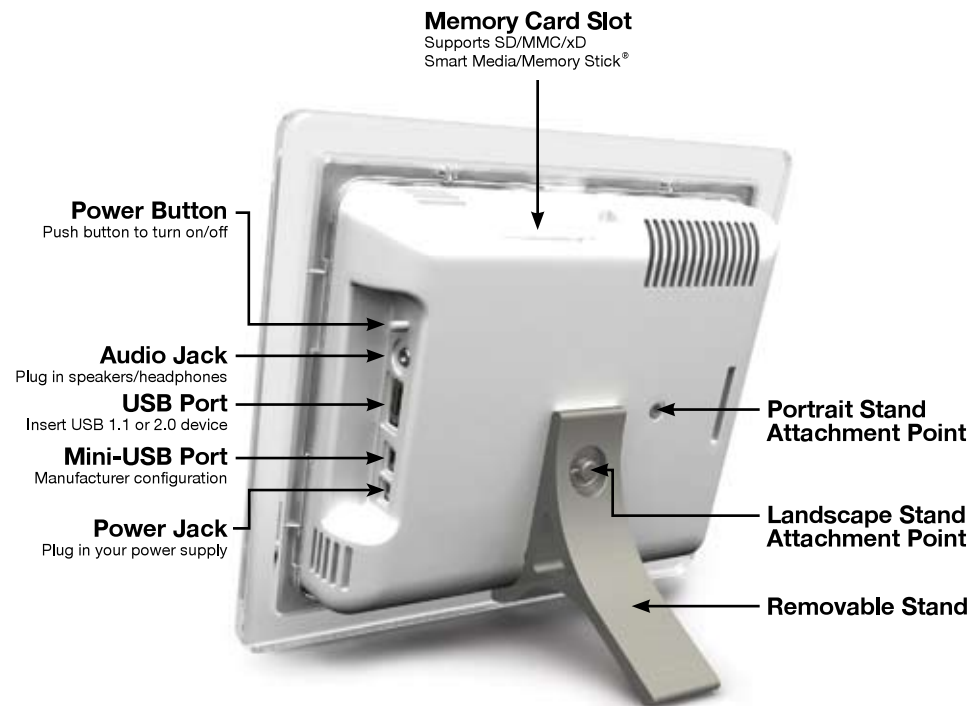
Q. How do I use Momento in portrait mode?

A. Select **Menu>Momento Settings>Orientation**. Select Portrait and press OK on your remote. Select OK at the bottom of the screen and press OK on your remote. After a few seconds, your Momento frame will reboot automatically. Remove the stand. Reattach the stand to the portrait stand attachment point.

Q. How do I put the frame in standby?

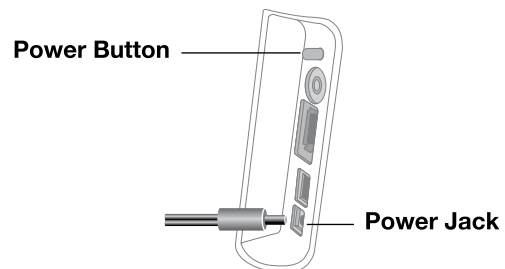
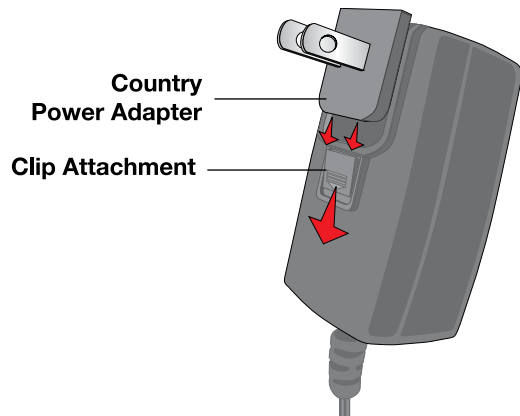
A. Press the power button on your remote.

Hardware Overview



1 Set Up Hardware

1. Remove your Momento, remote control, power supply, and power supply adapters from the box. Place the frame on a flat surface.
2. Attach the appropriate power adapter to your power supply—depending on your country.
3. Plug the power supply into the Momento power jack, and into an outlet. If your Momento does not power on immediately, push the power button located just above the audio jack. The **Setup: Date & Time** screen should appear.



You're now ready to set up your Momento.

About Main Menu



Tags

Organize pictures on your computer, then browse your pictures by tags or keywords. You can use Photo Gallery to set tags and keywords.



Folders

Organize folders on your computer, then browse your pictures by folder.



Date Taken

Browse pictures by the date they were taken.



Ratings

Rate your pictures from 1 to 5 stars on your computer.



Playlists

Create playlists on your computer, then browse on your Momento.

Momento Settings

Allows you to change your Slideshow, Frame, Wireless Network, Computer, and Live Services settings.

About Picture Sources



Favorites

To save a picture to Favorites, press the INFO button on your remote while the picture is displayed in the slideshow. Select Add to Favorites and press OK on your remote. Highlight OK at the bottom of the screen and press OK on your remote.



Computer

Momento™ works with computers running Windows Vista™ or Windows® XP with Windows Media Player 11. Browse your pictures by Tag, Folder, Rating, Date Taken, or Playlist.



Live

Sign up for Momento™ Live service and receive pictures directly to your Momento™ from anywhere in the world. Visit www.momentolive.com for details.



Memory Card

Play pictures from a memory card including SD, MMC, xD, Smart-Media and Memory Stick®. Insert the memory card in the slot located on the top of your Momento™.

Note: Some cards need an adapter to fit in the frame, i.e. mini and micro SD cards.



USB

Play pictures from your USB drive. Insert the drive into the USB port located on the side of your Momento™.

2

Setup: Date & Time



Set the Date

Using your remote control:

1. Highlight **Date**, then press **OK**.
2. Use **▲▼** to select a day.
3. Press **►** to highlight the month. Use **▲▼** to select a month.
4. Press **►** to highlight the year. Use **▲▼** to select a year.
5. Press **OK**.

Set the Time Zone

1. Press **▼** to highlight **Timezone**.
2. Use **◀▶** to select a timezone.

Setup: Date & Time (cont.)



Set the Time Format

1. Press ▼ to highlight **Time Format**, and press **OK**.
2. Use ◀▶ to select either a **24 Hour** or **12 Hour** format.
3. Press ▼ to highlight **Next**, then press **OK**.

Browsing Pictures



Use ◀▶ to change your picture source.
Use ▲▼ to select browse or other command options.

To change your slideshow settings:

1. Press ▼ to highlight **Momento Settings**.
2. Press **OK**.
3. Click **Slideshow**.

Congratulations, You're Done!

You should now see the main menu shown on the next page.

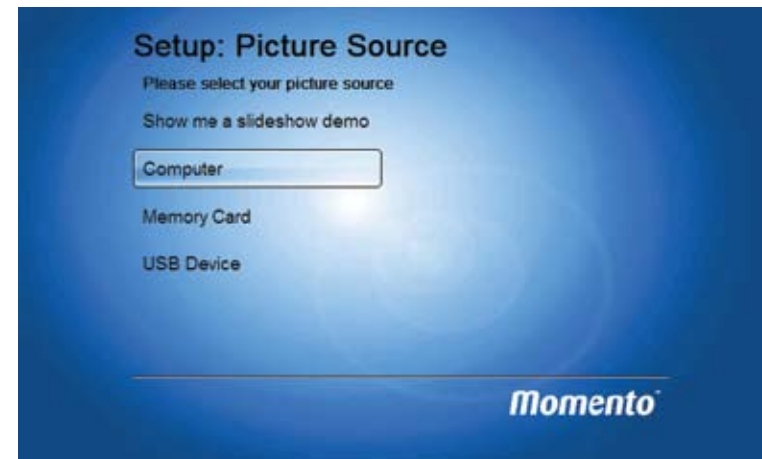
Troubleshooting Computer Connectivity

If you do not see the main menu try the following:

1. Wait a few moments to allow your computer to complete setup.
2. To refresh the connection, use your remote to scroll left and highlight **Favorites** (the star icon), then scroll right to highlight **Computer**.
3. Verify that your pictures are being shared.
 - If your computer is running Windows® XP, click **Start**, then click **My Pictures**. Under **Files and Folder Tasks**, click **Share this folder**. Click **Share this folder**, and then click **OK**.
 - If your computer is running Windows Vista™, click **Start**, then click **Windows Media Player**. Click **Library**, and then **Media Sharing**. Click **Settings**. Make sure **Pictures** is checked. Make sure **All ratings** and **Share unrated files** are checked.

3

Setup: Picture Source



Set the Picture Source

1. Press ▼ to highlight your picture source, and press **OK**.
 - **Show me a slideshow demo** will launch a default picture slideshow. Press the **Menu** button to exit.
 - **USB Device** and **Memory Card** will prompt you to insert a device.
 - **Computer** will search for available wireless networks.

Additional Features

- Choose **Computer** and enjoy the benefits of wireless connectivity.
- Sign up for Momento™ Live - friends and family can send pictures direct to your Momento™ from anywhere in the world.
- Use Windows® SideShow gadgets to get information from your computer on your Momento™.

4

Set Up Media Sharing



Computer Picture Source

If you selected your computer as your picture source, then you will need to set up media sharing on your computer.

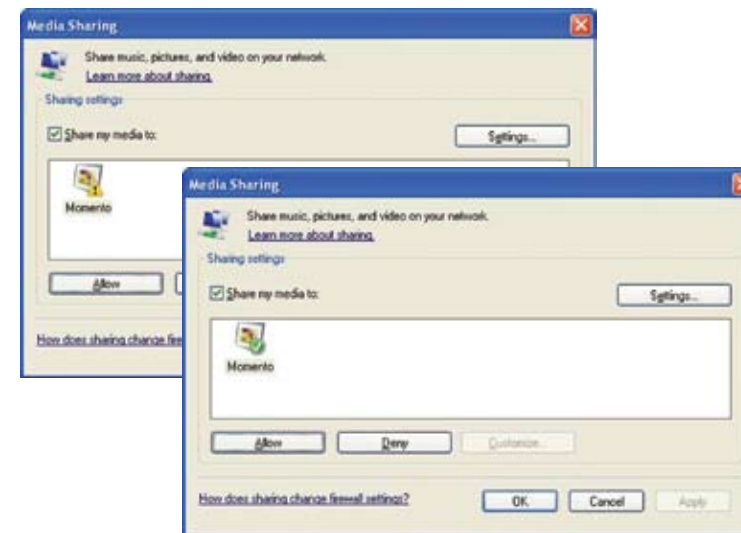
1. From your computer, click **Start**, point to **Programs**, and click **Windows Media Player**.
2. Click **Library**, and then **Media Sharing**.

Note: Your computer must be running Windows® Vista™ or Windows® XP with Windows Media Player 11. To download and install, visit:

<http://www.microsoft.com/windows/windowsmedia/player/11/default.aspx>

7

Share Computer with Momento™



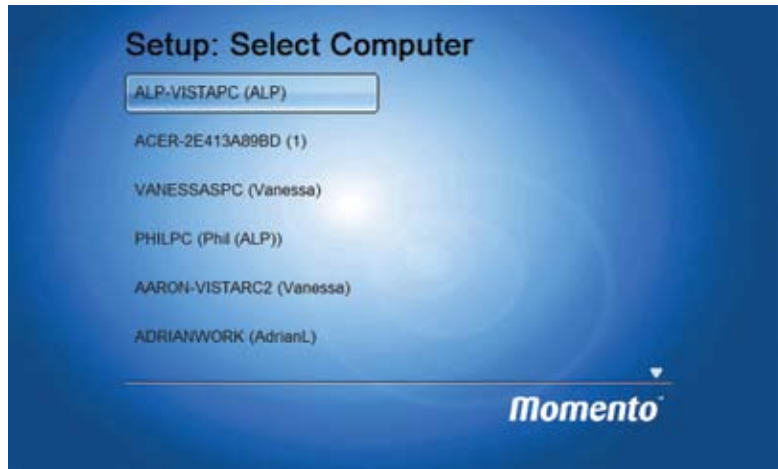
Media Sharing

To allow your computer to share with Momento:

1. From your computer, click **Start**, point to **Programs**, and click **Windows Media Player**.
2. Select **Library**, and click **Media Sharing**.
3. Click **Momento**.
4. Click **Allow**, and then click **OK**.

6

Setup: Select Computer



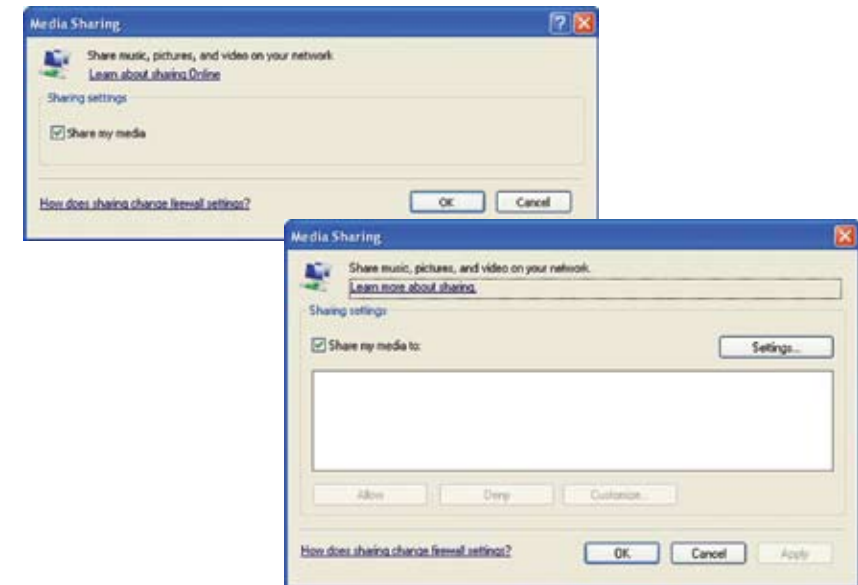
Use ▲▼ to highlight the computer you wish to connect to, then press **OK**.

Troubleshooting Computer Connectivity

If you are unable to connect, try the following:

- 1) Make sure your computer is on and not in hibernate.
- 2) Make sure you are connected to the same wireless network.
- 3) Make sure you completed step 5 correctly.
- 4) Reboot your computer and try again.

Set Up Media Sharing (cont.)



3. Select **Share my media**, and click **OK**.
4. Verify that **Share my media to** is selected, and click **OK**.
5. Using your Momento remote, press **OK** to go to the next screen.

5

Setup: Select a Wireless Network



Use ▲▼ to highlight the network you wish to connect to, and select **OK** on your remote control to select .

Read Settings from USB

WiFi settings can be exported to a USB flash drive using the Windows XP or Vista Wireless Network Setup Wizard. To read WiFi settings from a USB flash drive:

1. Insert the USB flash drive into the Momento USB port.
2. Highlight **Read settings from USB**, and press **OK**.

Hidden Networks

If your network is hidden, select **My Network is Hidden**. You will be prompted to enter your SSID.

Select a Wireless Network (cont.)



Secure Networks

If your network is secure, you will be prompted to enter your network pass-key using an on-screen keyboard.

- Use ◀▶ ▲▼ on your remote to select a character on the keyboard, and press **OK** to enter a character.
- To correct an error, select **BACKSPACE** and press **OK**.
- To enter a capital letter, first select and press **OK** on the **CAPS** button, and then select a character and press **OK**.
- To enter a symbol, first select and press **OK** on the **Symbols** button, then select the symbol you want and press **OK**.
- To enter an accented character, first select and press **OK** on the **Accents**, then select the accented character you want and press **OK**.

Troubleshooting Wireless Connectivity

If you are unable to connect try the following:

- 1) Re-enter the network security key (if one is required) and try again.
- 2) Reset your wireless router and try again.
- 3) Make sure the frame is within range of your wireless network.
- 4) If your network is hidden, select My Network is Hidden.

Statement:

This equipment has been tested and found to comply with the limits for a Class B digital device, pursuant to part 15 of the FCC rules. These limits are designed to provide reasonable protection against harmful interference in a residential installation. This equipment generates, uses and can radiate radio frequency energy and, if not installed and used in accordance with the instructions, may cause harmful interference to radio communications. However, there is no guarantee that interference will not occur in a particular installation. If this equipment does cause harmful interference to radio or television reception, which can be determined by turning the equipment off and on, the user is encouraged to try to correct the interference by one or more of the following measures: -Reorient or relocate the receiving antenna. -Increase the separation between the equipment and receiver. -Connect the equipment into an outlet on a circuit different from that to which the receiver is connected. -Consult the dealer or an experienced radio/TV technician for help.

You are cautioned that changes or modifications not expressly approved by the party responsible for compliance could void your authority to operate the equipment.

FCC RF Radiation Exposure Statement:

1. This Transmitter must not be co-located or operating in conjunction with any other antenna or transmitter.
2. This equipment complies with FCC RF radiation exposure limits set forth for an uncontrolled environment. This equipment should be installed and operated with a minimum distance of 20 centimeters between the radiator and your body.

MomentoTM
live

www.momentolive.com

MomentoTM

Wireless Digital Picture Frame

Getting Started

i-mateTM

i-mateTM