



TECHNICAL MEMORANDUM

DATE: 6/8/17
FROM: Simbex Engineering
SUBJECT: MxEncoder Internal Photos

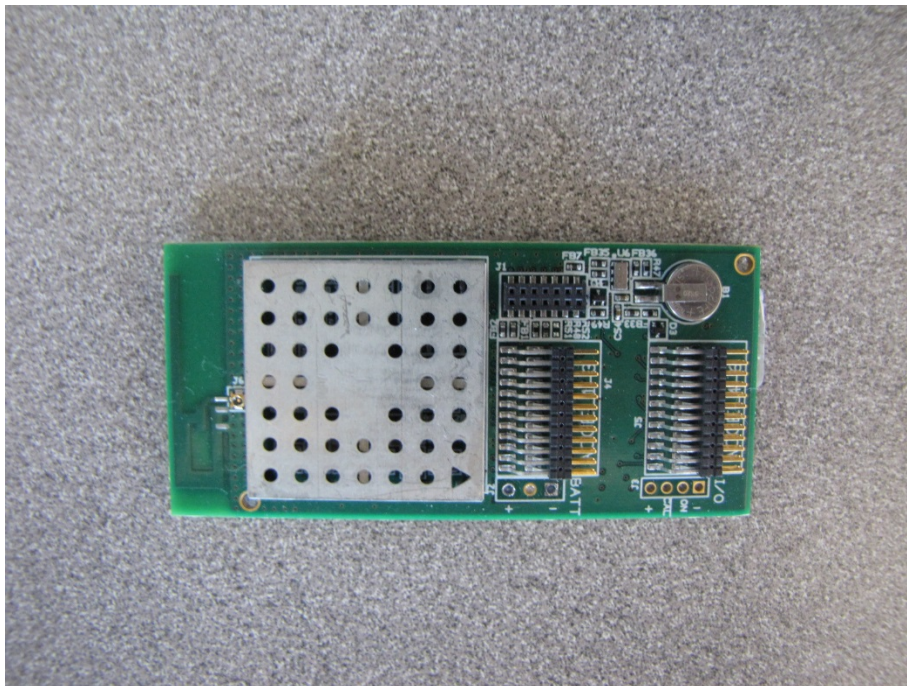


Figure 1 MxEncoder Player Unit (Top – RF Shield shown)

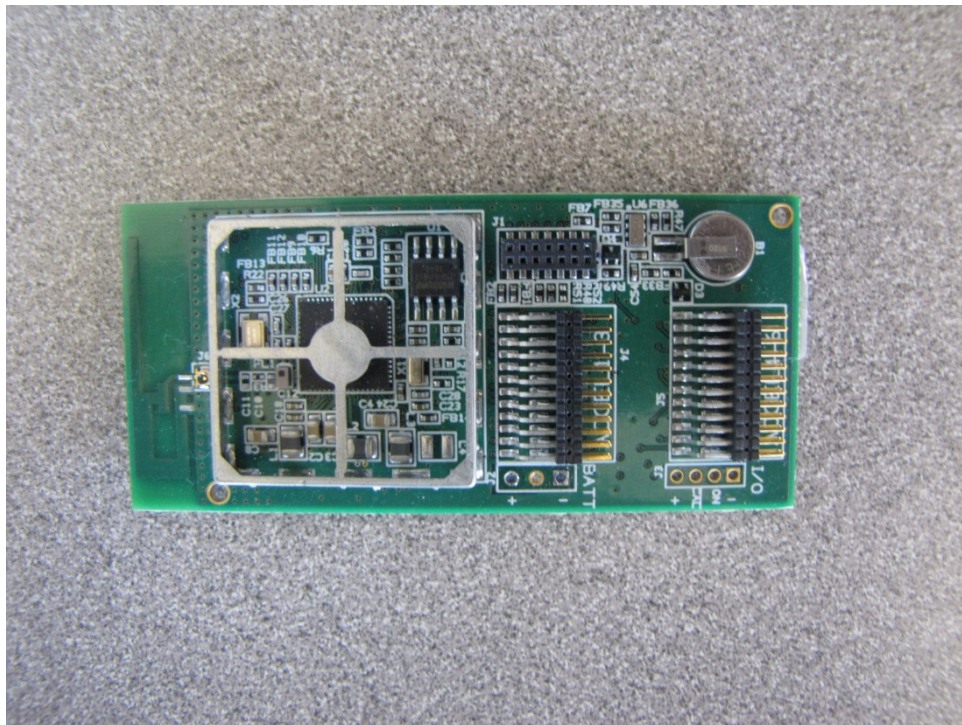


Figure 2 MxEncoder Player Unit (Top – RF Shield removed)

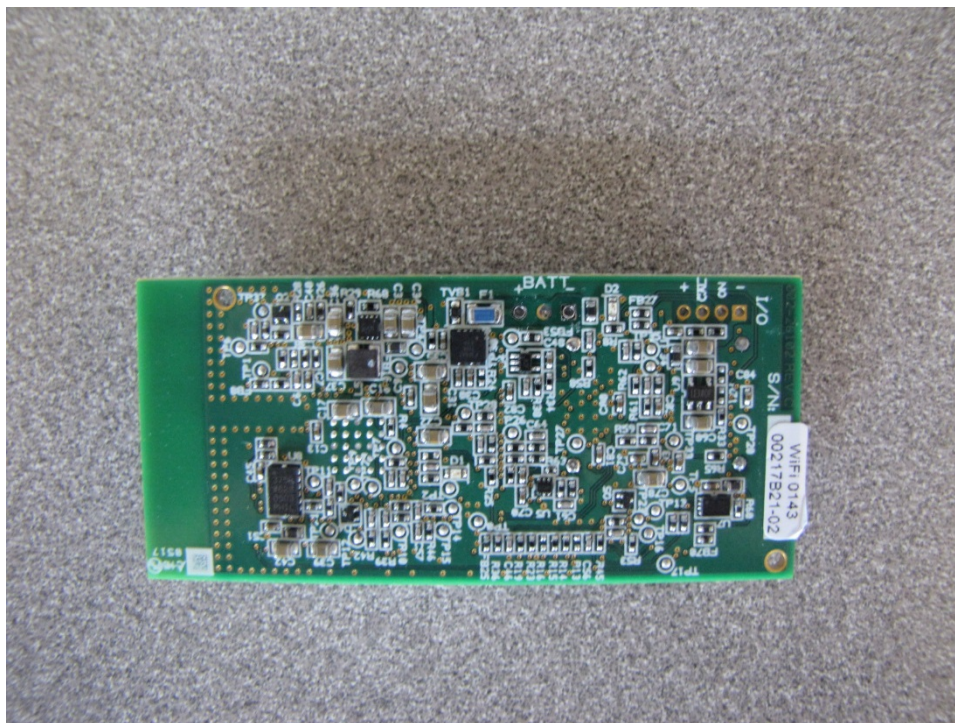


Figure 3 MxEncoder Player Unit (Bottom)

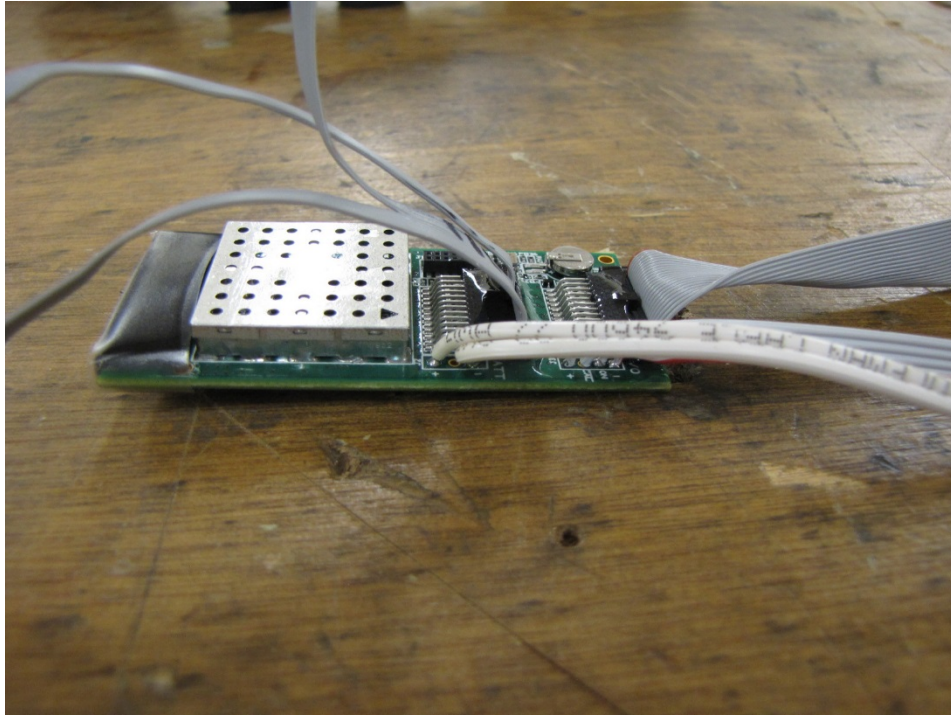


Figure 4 MxEncoder Player Unit with accelerometer harnesses (grey) and power cable (white) attached (view 1)

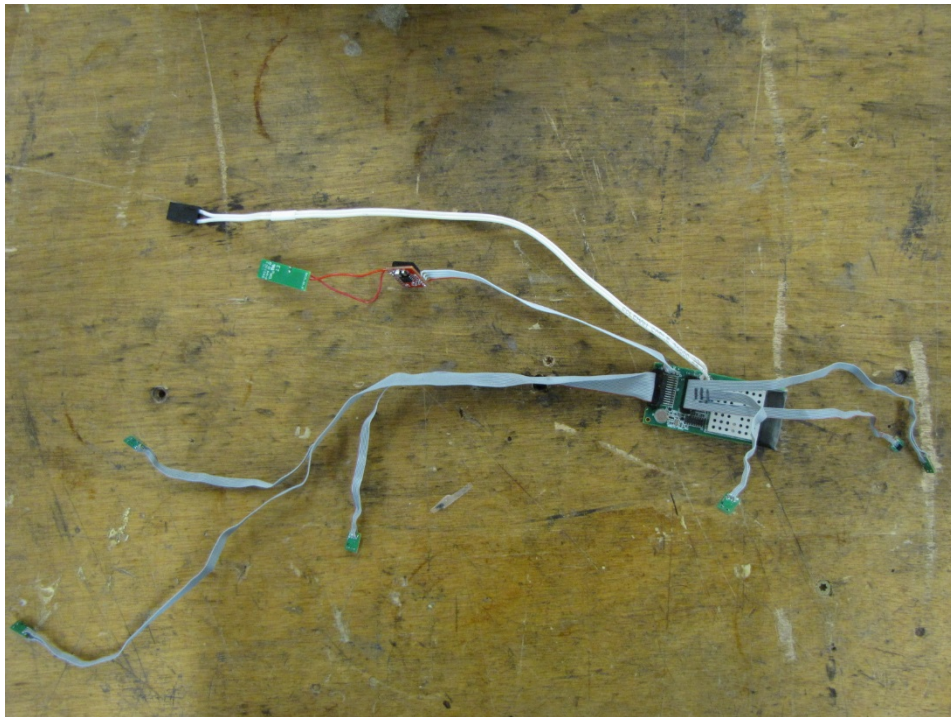


Figure 5 MxEncoder Player Unit with accelerometer harnesses (grey) and power cable (white) attached (view 2)



Figure 6 MxEncoder Player Unit and harnesses in final assembly.