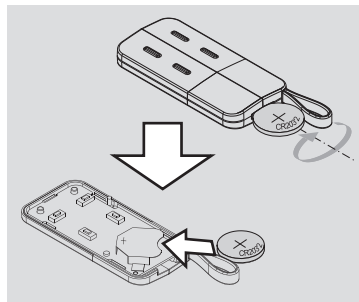


DICETXFM400U
 V. 10.2013

FM402U
FM404U


TRANSMITTER TECHNICAL DATA	u.m	
Battery and power supply type *	V	3 (CR2032)
Consumption in the transmitting mode	mA	20
Frequency	MHz	433,920
Modulation	FSK	<40 KHz
Operating temperature	°C	-20+55
Number of combinations		2 ¹⁶

*Caution: lithium batteries. Danger if the polarity is reversed. Replace the battery with one having identical characteristics. Dispose of the batteries as recommended by the manufacturer.

Any changes or modifications not expressly approved by the party responsible for compliance could void the user's authority to operate this equipment.

Tested to Comply with FCC Standards FOR HOME OR OFFICE USE. Operation is subject to the following two conditions: (1) This device may not cause harmful interference, and (2) this device must accept any interference received, including interference that may cause undesired operation.