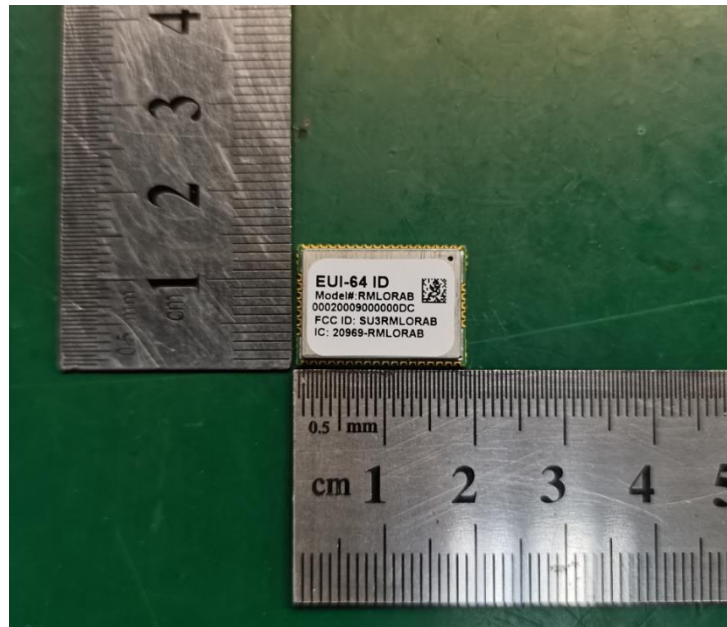
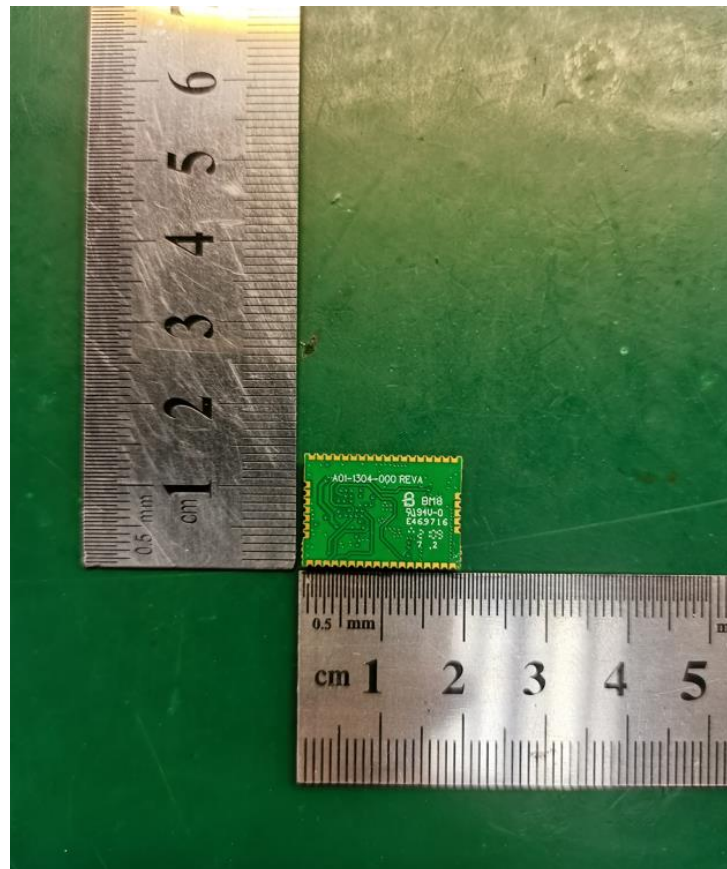


External Picture

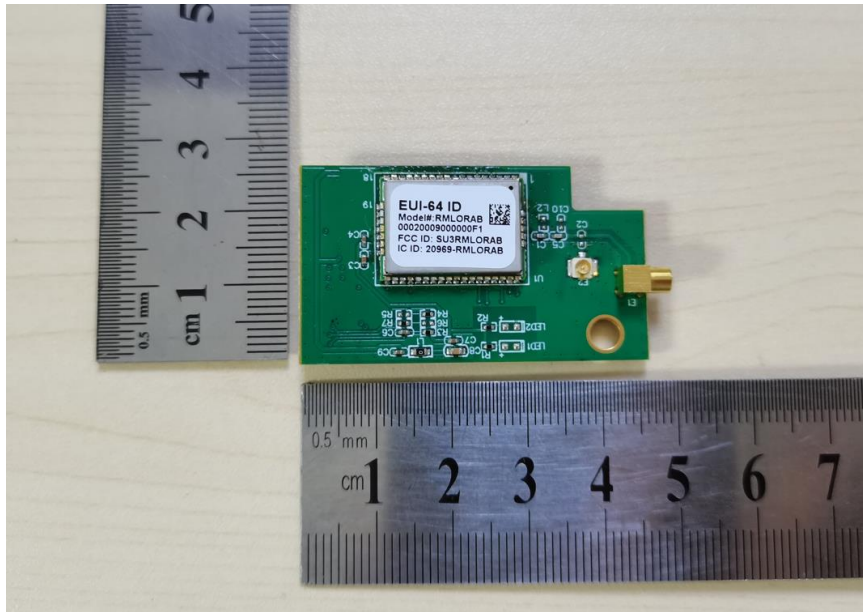
RMLORAB modem



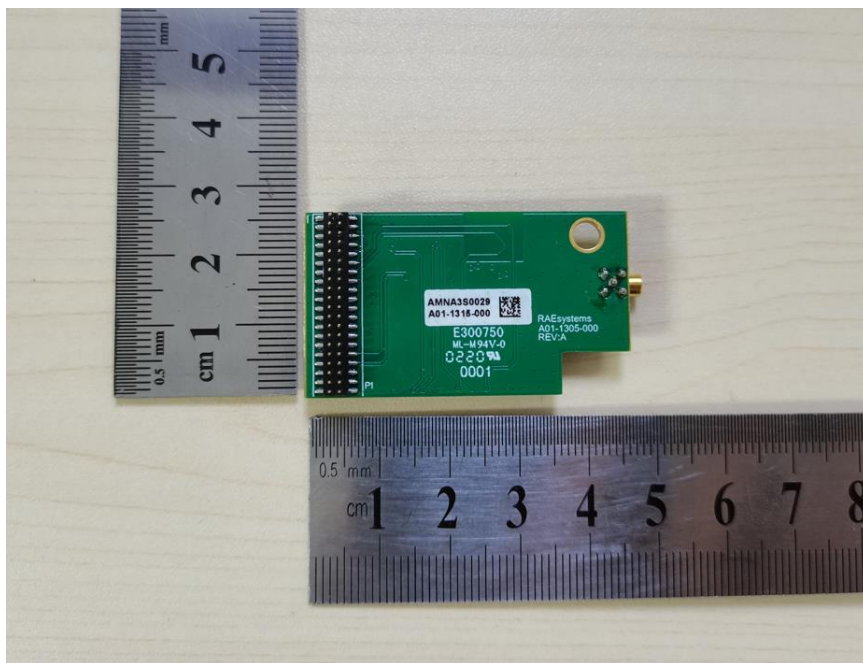
RMLORAB modem



RMLORAB modem with carry board



RMLORAB modem with carry board



Antenna 1: FPC antenna, -0.32dBi



Antenna 2: dipole antenna, RF-SMA connector, 3dBi



Antenna 3: dipole antenna, TNC connector, 3dBi



Antenna 4: dipole antenna, RP-N connector, 3dBi



Antenna 5: dipole antenna, N-type antenna, 1.8dBi

