

EMC Technologies (NZ) Ltd

Test Report No 41123.1
Report date: 29th November 2004

TEST REPORT

SIMOCO SRM9000 UW UHF Mobile Transceiver

tested to the

Code of Federal Regulations (CFR) 47

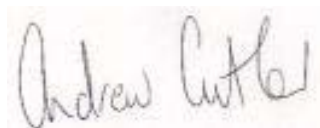
Part 90 –Private Land Mobile Services

Part 22 – Public Mobile Services

Part 15 – Radio Frequency Device

For

TMC Radio Pty Ltd



This Test Report is issued with the authority of:

Andrew Cutler - General Manager



All tests reported
herein have been
performed in accordance
with the laboratory's
scope of accreditation

EMC Technologies (NZ) Ltd

STREET ADDRESS - 47 MacKelvie Street, Grey Lynn, Auckland, New Zealand
POSTAL ADDRESS - PO Box 68 307, Newton, Auckland, New Zealand

Telephone: +64 9 360 0862 Fax: +64 9 360 0861
E-mail: aucklab@ihug.co.nz

EMC Technologies (NZ) Ltd

Test Report No 41123.1
Report date: 29th November 2004

Table of Contents

1. CLIENT INFORMATION	3
2. DESCRIPTION OF TEST SAMPLE	3
3. COMPLIANCE STATEMENT AND RESULT SUMMARY	4
4. TEST SAMPLE DESCRIPTION	5
5. TEST CONDITIONS	6
6. ATTESTATION	7
7. TEST RESULTS	8
8. TEST EQUIPMENT USED	33
9. ACCREDITATIONS	33
10. PHOTOGRAPH (S)	34

EMC Technologies (NZ) Ltd

STREET ADDRESS - 47 MacKelvie Street, Grey Lynn, Auckland, New Zealand
POSTAL ADDRESS - PO Box 68 307, Newton, Auckland, New Zealand

Telephone: +64 9 360 0862 Fax: +64 9 360 0861
E-mail: aucklab@ihug.co.nz

EMC Technologies (NZ) Ltd

Test Report No 41123.1
Report date: 29th November 2004

1. CLIENT INFORMATION

Company Name	TMC Radio Pty Ltd
Address	1270 Ferntree Gully Road Scoresby
City	Melbourne
Country	Australia
Contact	Mr Robert Stowell

2. DESCRIPTION OF TEST SAMPLE

Brand Name	SIMOCO
Model Number	SRM9000 UW
Product	UHF Mobile Transceiver
Manufacturer	TMC Radio Pty Ltd
Designed in	Australia
Manufactured in	Taiwan
Serial Number	SMUWX0447004E
FCC ID	STZSRM9000UW

EMC Technologies (NZ) Ltd

STREET ADDRESS - 47 MacKelvie Street, Grey Lynn, Auckland, New Zealand
POSTAL ADDRESS - PO Box 68 307, Newton, Auckland, New Zealand

Telephone: +64 9 360 0862 Fax: +64 9 360 0861
E-mail: aucklab@ihug.co.nz

EMC Technologies (NZ) Ltd

Test Report No 41123.1

Report date: 29th November 2004

3. COMPLIANCE STATEMENT AND RESULT SUMMARY

The **SIMOCO SRM9000 UW UHF Mobile Transceiver** complies with the limits defined in 47CFR 15, 47CFR22, 47 CFR Part 90 and 47 CFR Part 2 when tested in accordance with the test methods described in 47 CFR Part 2.

<u>CLAUSE</u>	<u>TEST PERFORMED</u>	<u>RESULT</u>
2.1041	Measurement procedures	Noted
90.203	Certification required	Complies
2.1046	RF power output	Noted
90.205	Power and antenna height limits	Complies
2.1047	Modulation Characteristics	
2.1047(a)	Low pass filter response	Complies
2.1047(b)	Modulation limiting characteristics	Complies
90.211(a)	Modulation characteristics	Complies
2.1049	Occupied bandwidth	Noted
2.202	Bandwidths	Noted
22.357	Emission types	Complies
22.359(a)	Emission masks	Complies
90.207	Types of emissions	Complies
90.209	Bandwidth limitations	Complies
90.210	Emission masks	Complies
2.1051	Spurious emissions at antenna terminals	Complies
2.1053	Field strength of spurious radiation	Complies
2.1055	Frequency stability	Noted
22.355	Frequency tolerance	Complies
90.213	Frequency stability	Complies
2.1057	Frequency spectrum to be investigated	Noted
90.214	Transient frequency behaviour	Complies
15.109	Radiated emission limits	Complies
15.111	Antenna conducted power measurement	Complies
1.1310	Radio frequency radiation exposure limits	Complies

EMC Technologies (NZ) Ltd

STREET ADDRESS - 47 MacKelvie Street, Grey Lynn, Auckland, New Zealand
POSTAL ADDRESS - PO Box 68 307, Newton, Auckland, New Zealand

Telephone: +64 9 360 0862 Fax: +64 9 360 0861
E-mail: aucklab@ihug.co.nz

EMC Technologies (NZ) Ltd

Test Report No 41123.1

Report date: 29th November 2004

4. TEST SAMPLE DESCRIPTION

The sample tested has the following specifications:

Rated Transmitter Output Power

25.0 Watts (44.0 dBm)

Transmitter frequency range

440 – 512 MHz

Test frequencies

Chl	Frequency MHz	Power Watts	Spacing kHz
1	440.0750	25.0	12.5
2	470.0750	25.0	12.5
3	499.9750	25.0	12.5
4	440.0750	25.0	25.0
5	470.0750	25.0	25.0
6	499.9750	25.0	25.0

FCC Bands

Part 90: 421 – 512 MHz

Part 22: 450 – 512 MHz

Emission Designators / Modes of operation

11k2F3E – Analogue speech

11k2F1D – 1200 baud FFSK

8k10F1E – C4FM digital speech

16k0F3E – Analogue speech

16k0F1D – 1200 baud FFSK

Power Supply

External DC voltage supply. Typically 13.8 Vdc

EMC Technologies (NZ) Ltd

STREET ADDRESS - 47 MacKelvie Street, Grey Lynn, Auckland, New Zealand
POSTAL ADDRESS - PO Box 68 307, Newton, Auckland, New Zealand

Telephone: +64 9 360 0862 Fax: +64 9 360 0861
E-mail: aucklab@ihug.co.nz

EMC Technologies (NZ) Ltd

Test Report No 41123.1

Report date: 29th November 2004

5. TEST CONDITIONS

Standard Temperature and Humidity

Temperature: +25°C ± 4° maintained.

Relative Humidity: 60% ± 10% observed.

Standard Test Power Source

Standard Test Voltage: 13.8 Vdc.

Extreme Temperature

High Temperature: + 50°C maintained.

Low Temperature: - 30 °C maintained.

Extreme Test Voltages

High Voltage: 15.9 Vdc

Low Voltage: 11.7 Vdc

EMC Technologies (NZ) Ltd

STREET ADDRESS - 47 MacKelvie Street, Grey Lynn, Auckland, New Zealand
POSTAL ADDRESS - PO Box 68 307, Newton, Auckland, New Zealand

Telephone: +64 9 360 0862 Fax: +64 9 360 0861
E-mail: aucklab@ihug.co.nz

EMC Technologies (NZ) Ltd

Test Report No 41123.1

Report date: 29th November 2004

6. ATTESTATION

The **SIMOCO SRM9000 UW UHF Mobile Transceiver** complies with the Code of Federal Regulations (CFR) 47 Part 90 –Private Land Mobile Services , Part 22 – Public Land Mobile Services and 47 Part 15 – Radio Frequency Devices.

This report describes the tests and measurements performed for the purpose of determining compliance with the specification with the following conditions:

The client selected the test sample.

The report relates only to the sample tested.

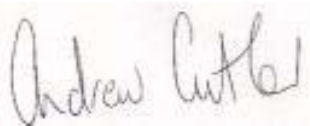
This report does not contain corrections or erasures.

Measurement uncertainties with statistical confidence intervals of 95% are shown below test results. Both Class A and Class B uncertainties have been accounted for, as well as influence uncertainties where appropriate.

In addition this equipment has been tested in accordance with the requirements contained in the appropriate Commission regulations.

To the best of my knowledge, these tests were performed using measurement procedures that are consistent with industry or Commission standards and demonstrate that the equipment complies with the appropriate standards.

I further certify that the necessary measurements were made by EMC Technologies NZ Ltd, 47 MacKelvie Street, Grey Lynn, Auckland, New Zealand.



Andrew Cutler
General Manager
EMC Technologies NZ Ltd

EMC Technologies (NZ) Ltd

Test Report No 41123.1

Report date: 29th November 2004

7. TEST RESULTS

Certification required

25 kHz channel bandwidth certification is sought for this transmitter under section 90.203(j)(2)(ii) as:

- certification has been sought after Feb 14th, 1997 and before January 1st, 2005
- the equipment has multi-bandwidth modes
- the equipment can operate with on 25 kHz and 12.5 kHz channels

Result: Complies.

RF power output

Measurements were carried out at the RF output terminals of the transmitter using a 30 dB power attenuator and a 50 Ω dummy load. Measurements were carried out when the transmitter was not being modulated. Measurements were made with the input voltage set to 13.8 Vdc and when varied +/- 15%. Testing was carried out at maximum power output.

<u>RF power output</u> (dBm)			
Frequency	Supply voltage	Rated	Measured
440.0750	13.8	44.0	43.5
470.0750	13.8	44.0	43.4
499.9750	13.8	44.0	43.4

<u>RF power output</u> (dBm)			
Frequency	Supply voltage	Rated	Measured
440.0750	11.7	44.0	43.4
440.0750	13.8	44.0	43.5
440.0750	15.9	44.0	43.5

Limits:

Clause 90.205(g) of Part 90 specifies that in the band 450 – 470 MHz the maximum allowable station effective radiated power (ERP) is dependent upon the station's antenna HAAT and the required service area.

Part 22 does not specify the transmitter output power.

Result: Complies

Measurement Uncertainty: ± 0.5 dB

EMC Technologies (NZ) Ltd

Test Report No 41123.1

Report date: 29th November 2004

Modulation Characteristics

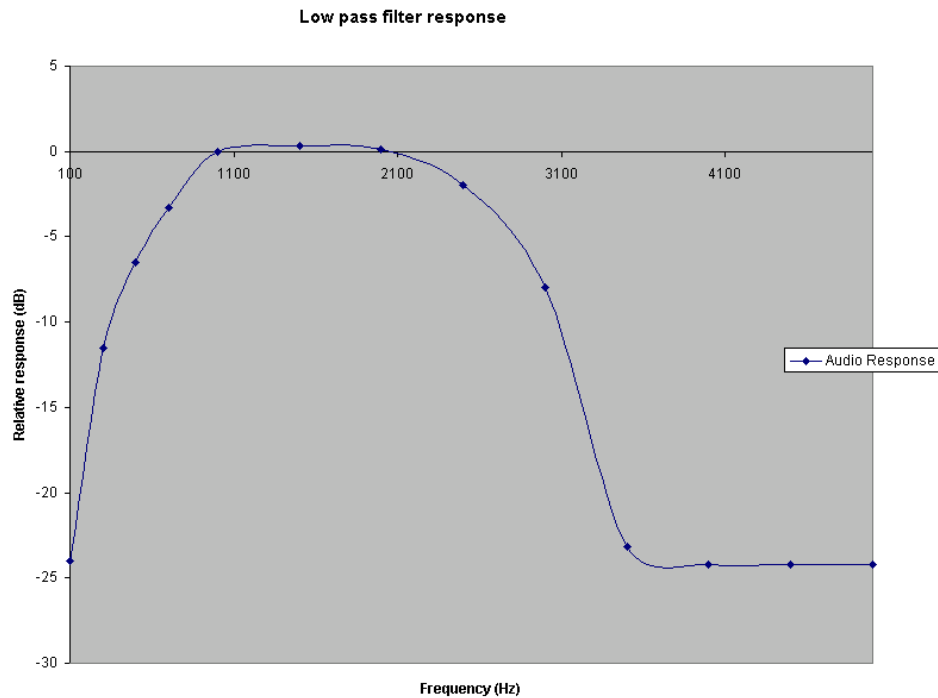
This transmitter is capable of producing analogue speech and digital speech modulations.

(a) Frequency response of the audio frequency low pass filter between 100 Hz and 15 kHz.

This measurement was carried out using an audio signal generator and an audio modulation analyser.

At 1 kHz an audio signal was applied which was used as a 0 dB response reference.

The frequency of the input signal was then varied and the output response noted. This measurement was carried out from 100 Hz to 5000 Hz as required by Part 2 with further measurements carried out in order to show the full range of this filter.



EMC Technologies (NZ) Ltd

STREET ADDRESS - 47 MacKelvie Street, Grey Lynn, Auckland, New Zealand
POSTAL ADDRESS - PO Box 68 307, Newton, Auckland, New Zealand

Telephone: +64 9 360 0862 Fax: +64 9 360 0861
E-mail: aucklab@ihug.co.nz

EMC Technologies (NZ) Ltd

Test Report No 41123.1

Report date: 29th November 2004

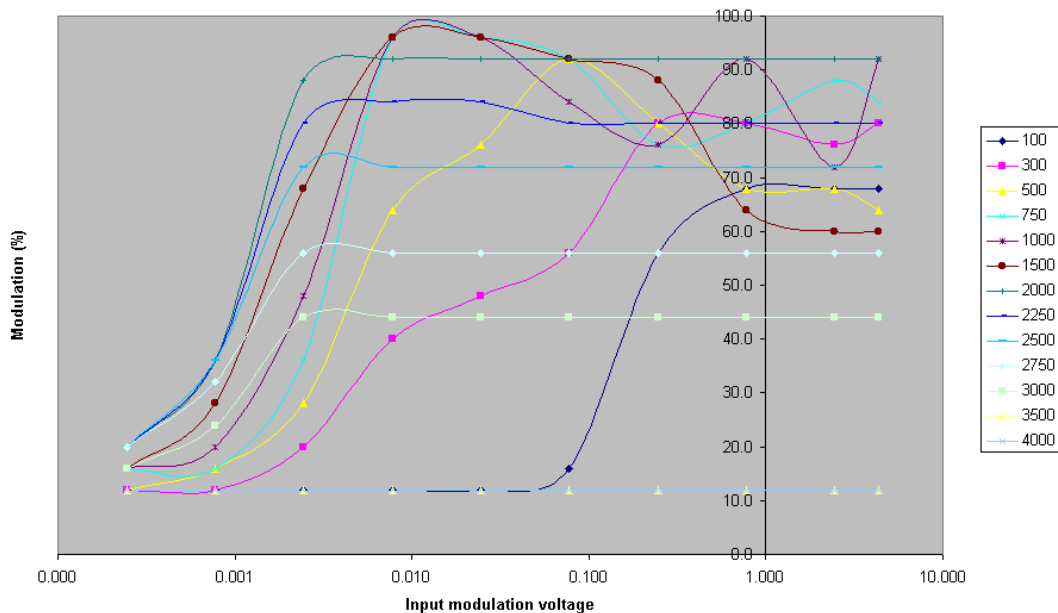
(b) A family of curves showing the percentage of modulation versus the modulation input voltage.

Measurements were made between 100 Hz to 4 kHz.

At each frequency the input voltage was slowly increased with the resulting frequency deviation of the transmitter being recorded.

This deviation was then converted to a modulation percentage where 5 kHz deviation is 100% for 25 kHz channels and 2.5 kHz deviation is 100% for 12.5 kHz channels.

Modulation Limiting Characteristics - 12.5 kHz transmitter



EMC Technologies (NZ) Ltd

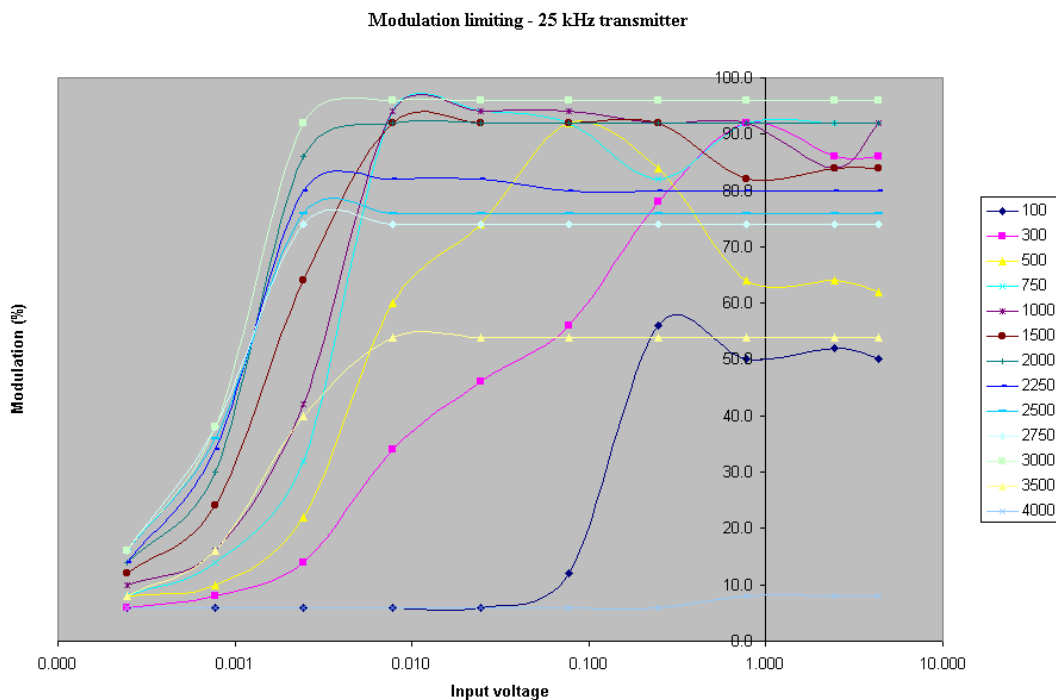
STREET ADDRESS - 47 MacKelvie Street, Grey Lynn, Auckland, New Zealand
POSTAL ADDRESS - PO Box 68 307, Newton, Auckland, New Zealand

Telephone: +64 9 360 0862 Fax: +64 9 360 0861
E-mail: aucklab@ihug.co.nz

EMC Technologies (NZ) Ltd

Test Report No 41123.1

Report date: 29th November 2004



(d) A curve or equivalent data that shows that the equipment will meet the modulation requirements of the rules under which the equipment is to be licensed.

Digital modulation as detailed below is also used with this transmitter.

The types of modulation used are:

C4FM digital modulation is used for digital telephony (F1E).

1200 baud FFSK data is used for data transmissions (F1D).

Limit:

Part 90.211 – Modulation requirements states the transmitter must meet the emission requirements of 90.210. Refer to the Occupied Bandwidth measurements in this report.

Result: Complies

Measurement Uncertainty: $\pm 1\%$.

EMC Technologies (NZ) Ltd

Test Report No 41123.1

Report date: 29th November 2004

Part 90.207 – Emission types:

The following emission types are used:

- F3E: Frequency modulation with analogue speech.
- F1E: Digital telephony using C4FM.
- F1D: Data transmission using 1200 baud FFSK data.

Part 90.209 – Bandwidth limitations:

The authorised bandwidth is taken to be the necessary bandwidth.

Using the formulas contained in Part 2.202 the necessary bandwidth calculation for the 25 kHz channel step emission is:

$$B_n = 2 \times D + 2 \times M$$

Where D = maximum deviation: 5.0 kHz

Where M = maximum modulation frequency: 3 kHz

$$B_n = \underline{16 \text{ kHz}}$$

This is confirmed in the emission designation, 16k0F3E, declared by the client.

Using the formulas contained in Part 2.202 the necessary bandwidth calculation for the 12.5 kHz channel step emission is:

$$B_n = 2 \times D + 2 \times M$$

Where D = maximum deviation: 2.5 kHz

Where M = maximum modulation frequency: 3 kHz

$$B_n = \underline{11 \text{ kHz}}$$

This is confirmed in the emission designation, 11k0F3E, declared by the client.

Part 22.359(a) – Analog modulation. No authorised bandwidth is defined.

The necessary bandwidth is taken to be the authorised bandwidth.

Using the formulas contained in Part 2.202:

$$B_n = 2 \times D + 2 \times M$$

Where D = maximum deviation: 2.5 kHz or 5.0 kHz

Where M = maximum modulation frequency: 3 kHz

$$B_n = \underline{11.0 \text{ kHz or } 16 \text{ kHz}}$$

EMC Technologies (NZ) Ltd

STREET ADDRESS - 47 MacKelvie Street, Grey Lynn, Auckland, New Zealand
POSTAL ADDRESS - PO Box 68 307, Newton, Auckland, New Zealand

Telephone: +64 9 360 0862 Fax: +64 9 360 0861
E-mail: aucklab@ihug.co.nz

EMC Technologies (NZ) Ltd

Test Report No 41123.1

Report date: 29th November 2004

This is confirmed in the emission designations, 11k0F3E and 16k0F3E as declared by the client.

Part 22 emission mask measurements have been carried out using necessary bandwidths of 11.25 kHz and 16 kHz respectively.

This transmitter can also transmit digital telephony and data using F1E and F1D.

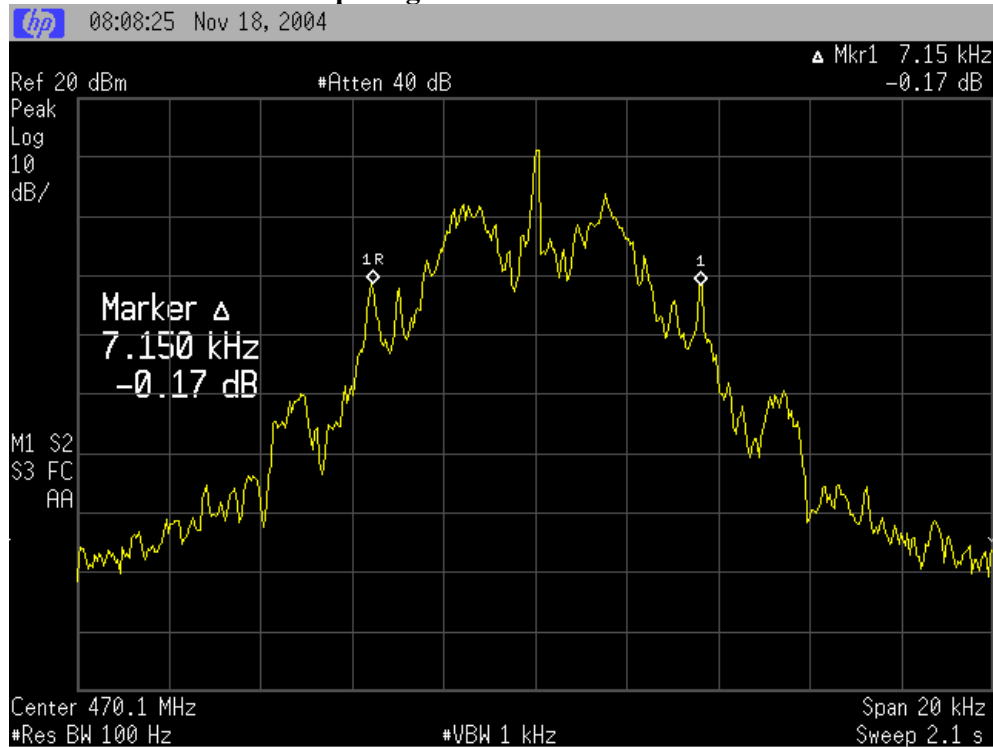
Using the tables in Part 2.202 – Bandwidth, bandwidths for the F1D and F1E emissions could not be determined easily.

Measurements of the authorised / occupied bandwidth at the 99% power level have been carried out.

This was carried out at the -23 dB points with the spectrum analyser in peak hold mode.

Emission	Channel	Measured	Designation
F1D	12.5 kHz	7.150 kHz	11k0F1D
F1E	12.5 kHz	8.100 kHz	8k10F1E
F1D	25.0 kHz	11.100 kHz	16k0F1D

F1D – 12.5 kHz channel spacing



EMC Technologies (NZ) Ltd

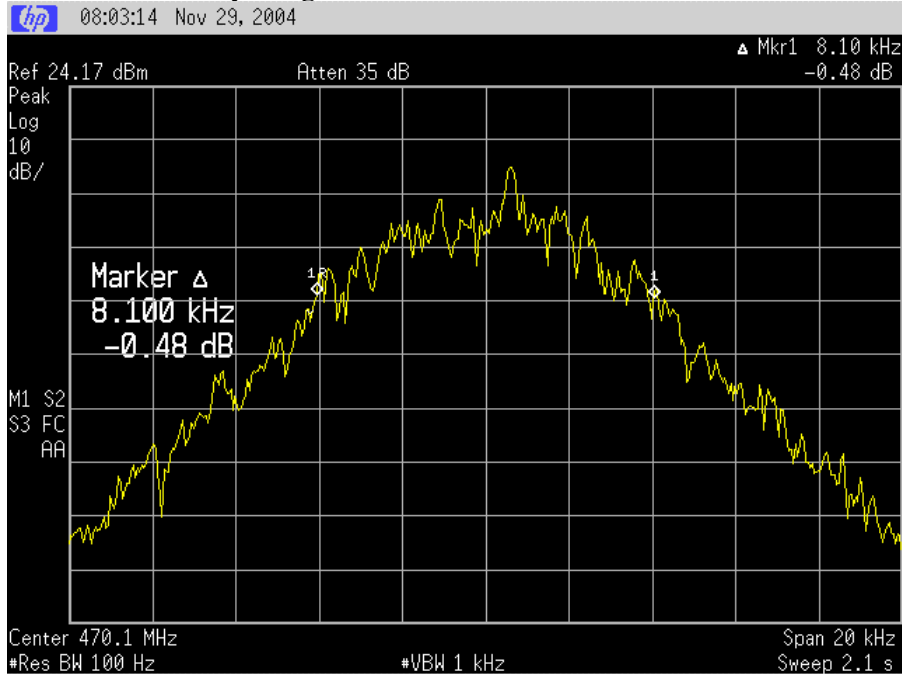
STREET ADDRESS - 47 MacKelvie Street, Grey Lynn, Auckland, New Zealand
POSTAL ADDRESS - PO Box 68 307, Newton, Auckland, New Zealand

Telephone: +64 9 360 0862 Fax: +64 9 360 0861
E-mail: aucklab@ihug.co.nz

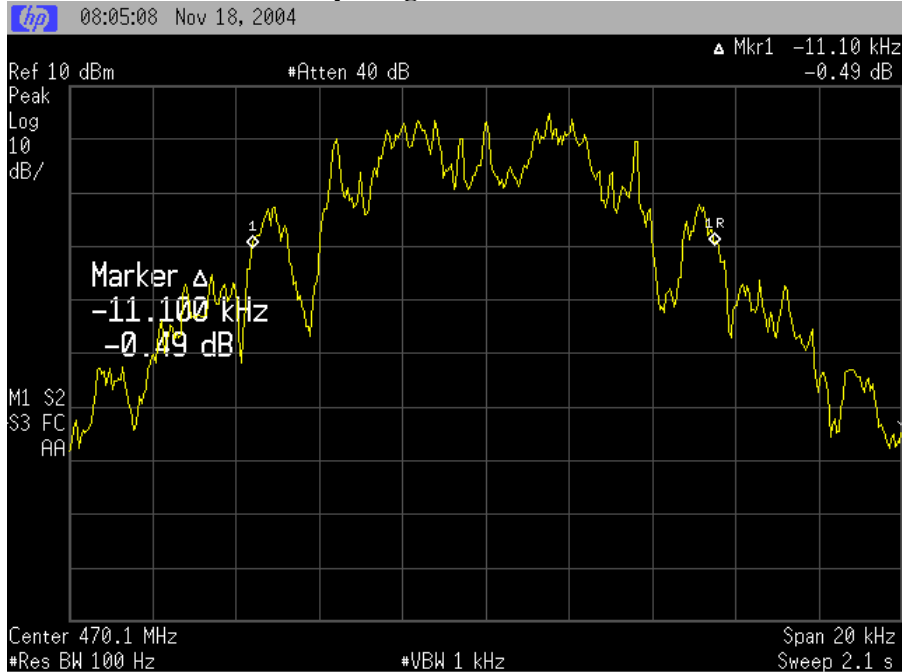
EMC Technologies (NZ) Ltd

Test Report No 41123.1
Report date: 29th November 2004

F1E – 12.5 KHz spacing



F1D – 25.0 kHz channel spacing



Result: Complies

EMC Technologies (NZ) Ltd

STREET ADDRESS - 47 MacKelvie Street, Grey Lynn, Auckland, New Zealand
POSTAL ADDRESS - PO Box 68 307, Newton, Auckland, New Zealand

Telephone: +64 9 360 0862 Fax: +64 9 360 0861
E-mail: aucklab@ihug.co.nz

EMC Technologies (NZ) Ltd

Test Report No 41123.1

Report date: 29th November 2004

Occupied Bandwidth

The spectrum masks are defined in:

Section 90.210(d) – Masks B and D have been applied as the transmitter can operate in the band 421 – 512 MHz using an authorised bandwidth of 20.0 kHz and 11.25 kHz as per Section 90.209(b)(5).

The reference level for the following emission mask measurements has been determined using a resolution bandwidth of 30 kHz with the transmitter not being modulated.

All measurements have been made with a 30 dB attenuator being placed between the transmitter and the spectrum analyser.

Measurements were made in peak hold with the transmitter operating on 470.0750 MHz.

When operating in F3E mode a 2500 Hz tone, which was found to be the frequency of maximum response, that was applied at a level 16 dB higher than that required to achieve 50% modulation.

For the F1E and F1D modes the transmitter was modulated uses modulation sources internal to the transmitter as supplied by the client.

Section 22.359(a) has been applied when analogue speech is utilised. The authorised bandwidth is taken as the necessary bandwidth which has been determined by calculation.

The 12.5 kHz transmitter has an authorised bandwidth (necessary bandwidth calculated) of 11 kHz applied and the 25 kHz transmitter has an authorised bandwidth of 16 kHz applied

Section 22.359(b)(2) has been applied when F1D and F1E are utilised. Authorised bandwidths of 7.2, 8.1 and 11 kHz (based upon the measured occupied bandwidths) have been applied.

Result: Complies

EMC Technologies (NZ) Ltd

STREET ADDRESS - 47 MacKelvie Street, Grey Lynn, Auckland, New Zealand
POSTAL ADDRESS - PO Box 68 307, Newton, Auckland, New Zealand

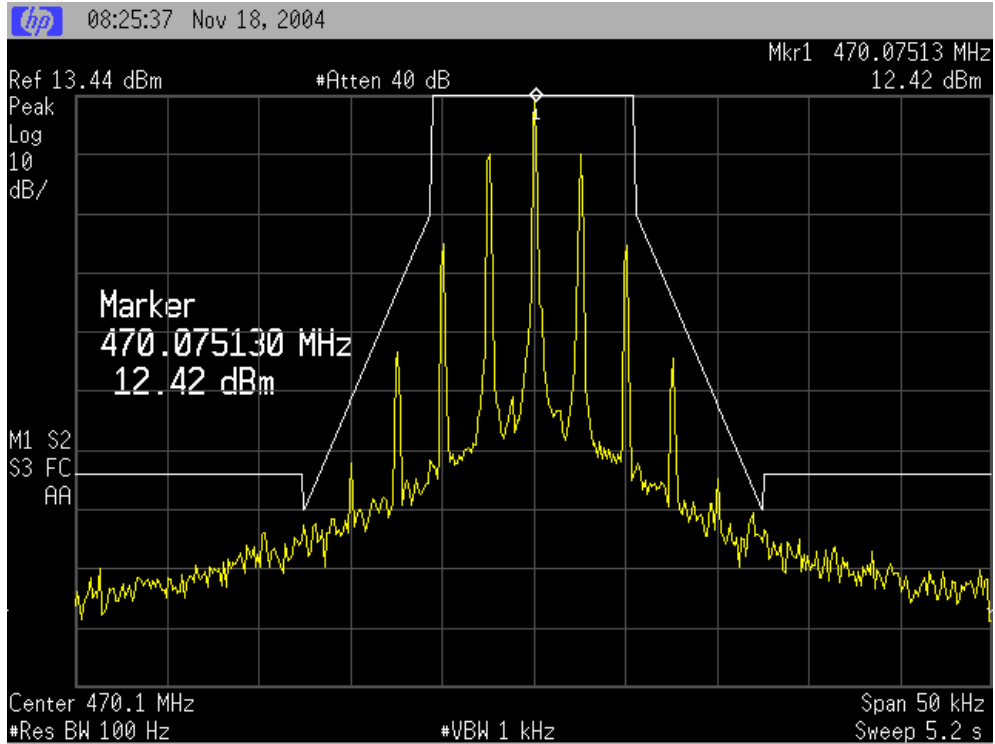
Telephone: +64 9 360 0862 Fax: +64 9 360 0861
E-mail: aucklab@ihug.co.nz

EMC Technologies (NZ) Ltd

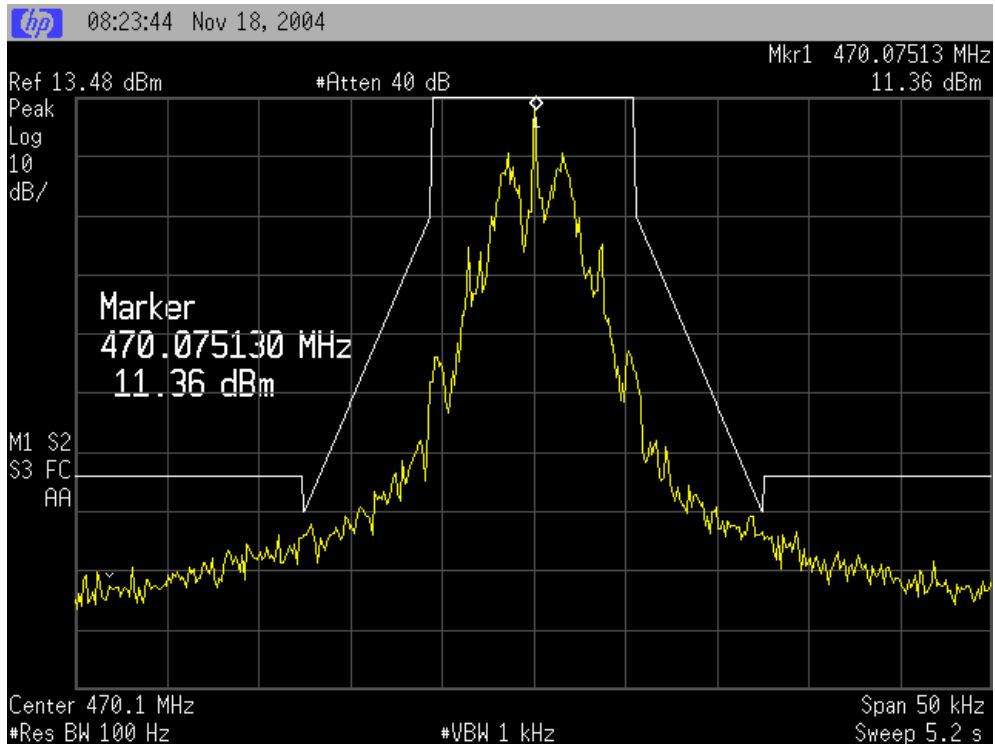
Test Report No 41123.1

Report date: 29th November 2004

Part 90: F3E – 12.5 kHz



Part 90: F1D – 12.5 kHz



EMC Technologies (NZ) Ltd

STREET ADDRESS - 47 MacKelvie Street, Grey Lynn, Auckland, New Zealand
POSTAL ADDRESS - PO Box 68 307, Newton, Auckland, New Zealand

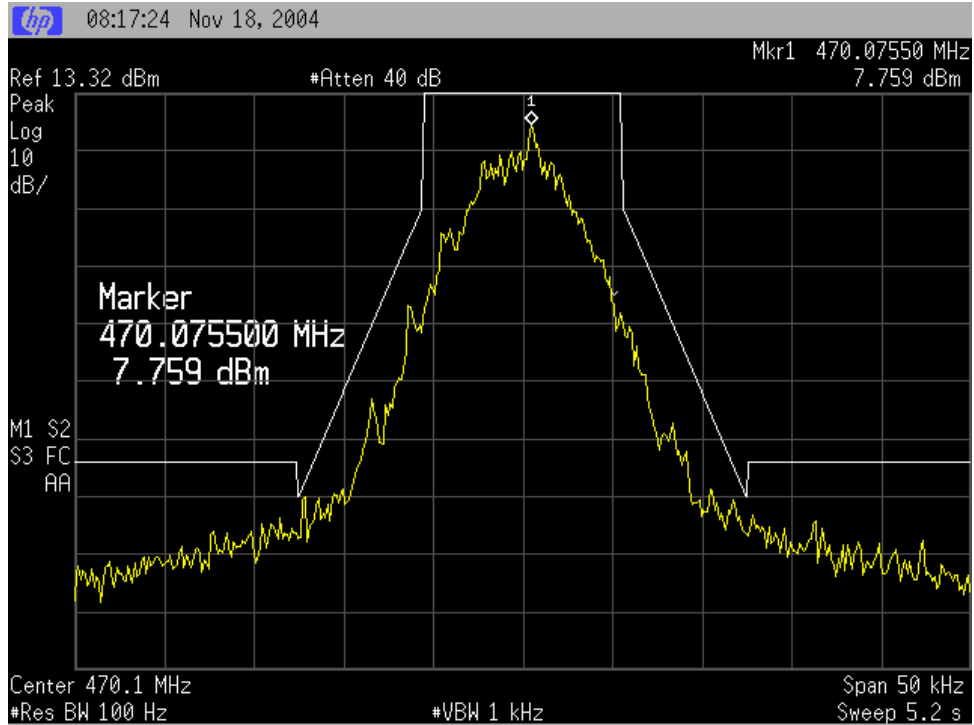
Telephone: +64 9 360 0862 Fax: +64 9 360 0861
E-mail: aucklab@ihug.co.nz

EMC Technologies (NZ) Ltd

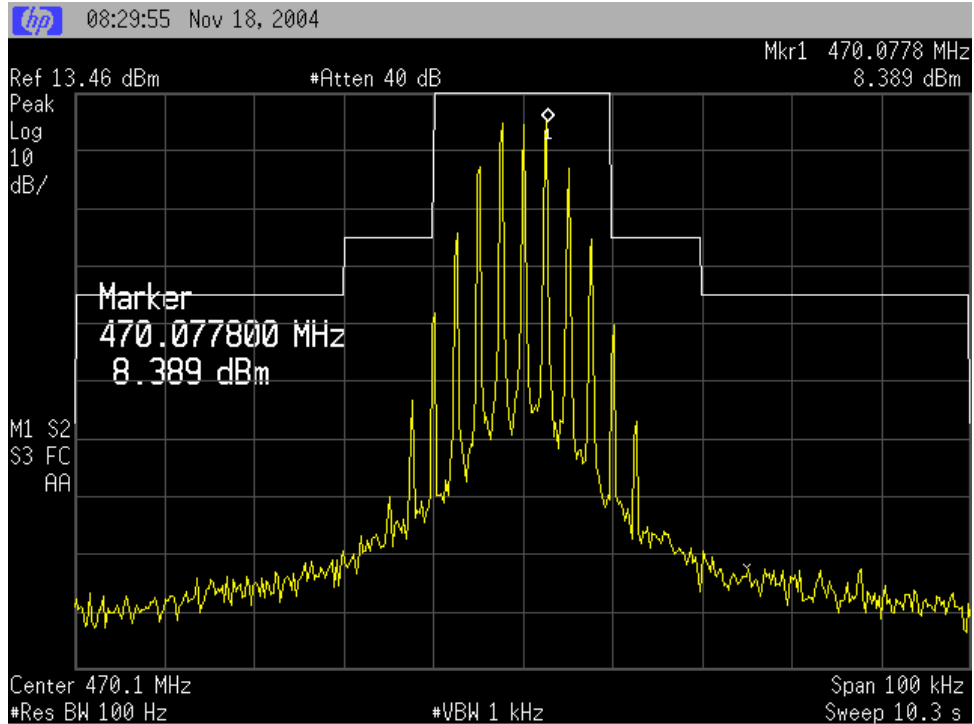
Test Report No 41123.1

Report date: 29th November 2004

Part 90: F1E – 12.5 kHz



Part 90: F3E – 25 kHz



EMC Technologies (NZ) Ltd

STREET ADDRESS - 47 MacKelvie Street, Grey Lynn, Auckland, New Zealand
POSTAL ADDRESS - PO Box 68 307, Newton, Auckland, New Zealand

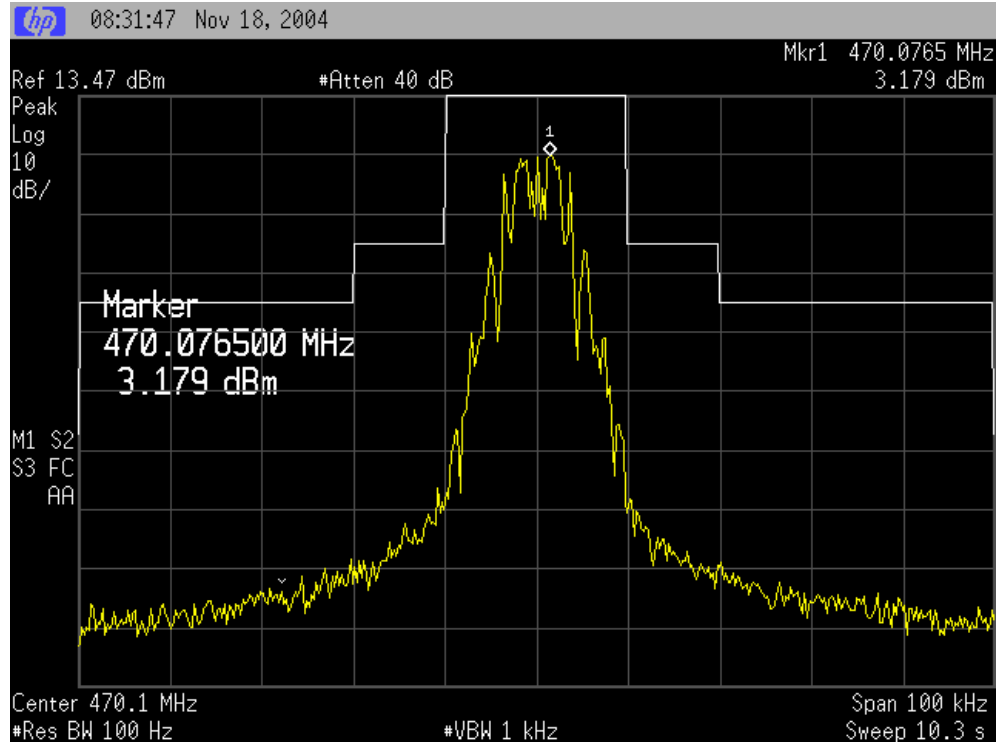
Telephone: +64 9 360 0862 Fax: +64 9 360 0861
E-mail: aucklab@ihug.co.nz

EMC Technologies (NZ) Ltd

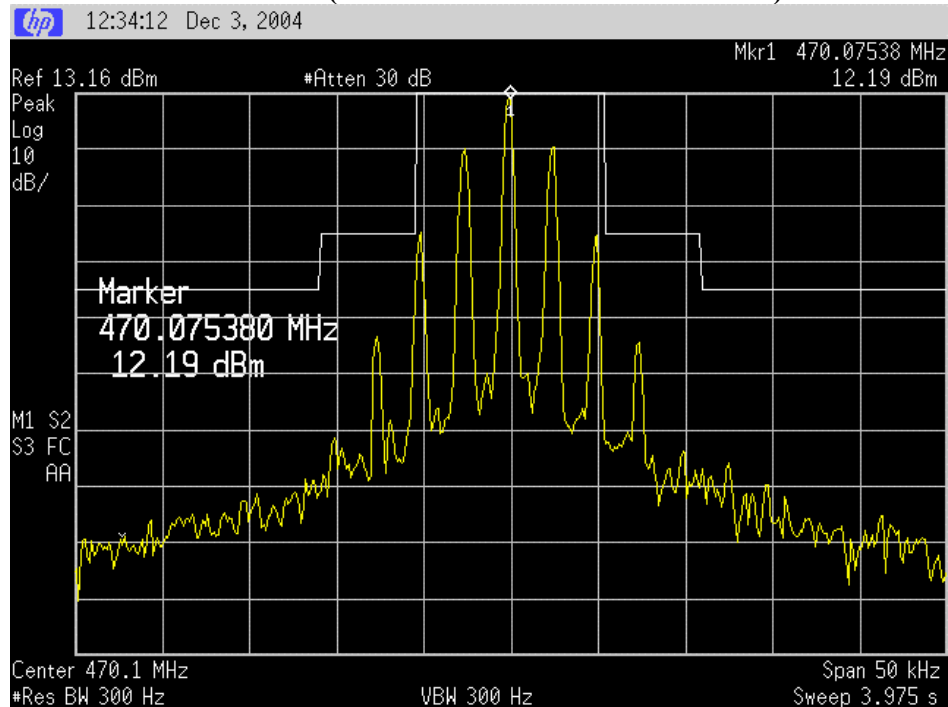
Test Report No 41123.1

Report date: 29th November 2004

Part 90: F1D – 25 kHz



Part 22: F3E – 12.5 kHz (Authorised bandwidth = 11.0 kHz)



EMC Technologies (NZ) Ltd

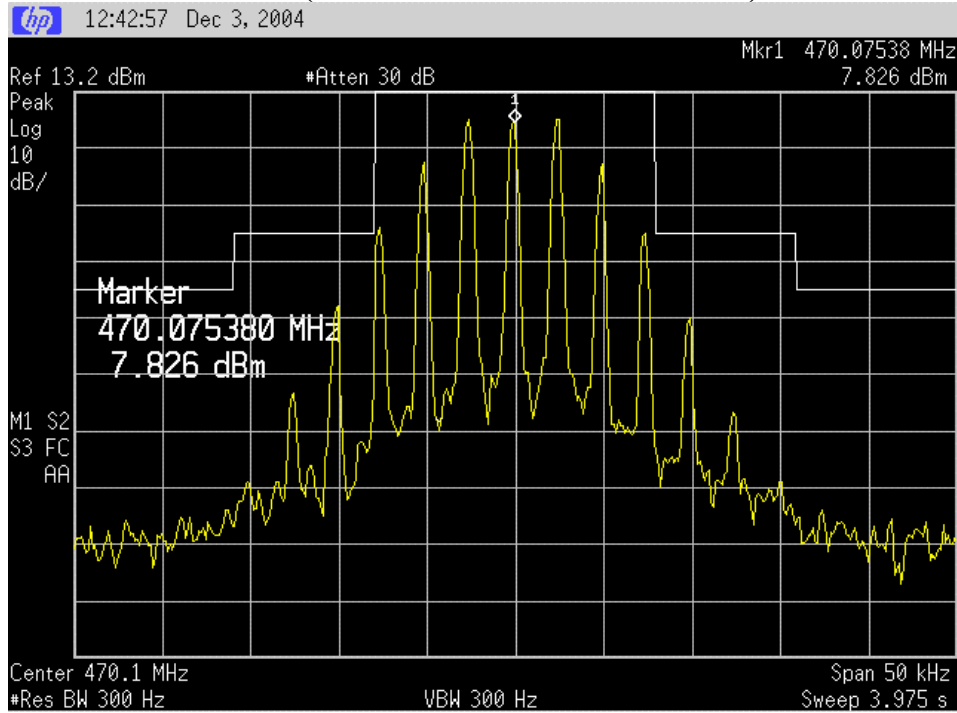
STREET ADDRESS - 47 MacKelvie Street, Grey Lynn, Auckland, New Zealand
POSTAL ADDRESS - PO Box 68 307, Newton, Auckland, New Zealand

Telephone: +64 9 360 0862 Fax: +64 9 360 0861
E-mail: aucklab@ihug.co.nz

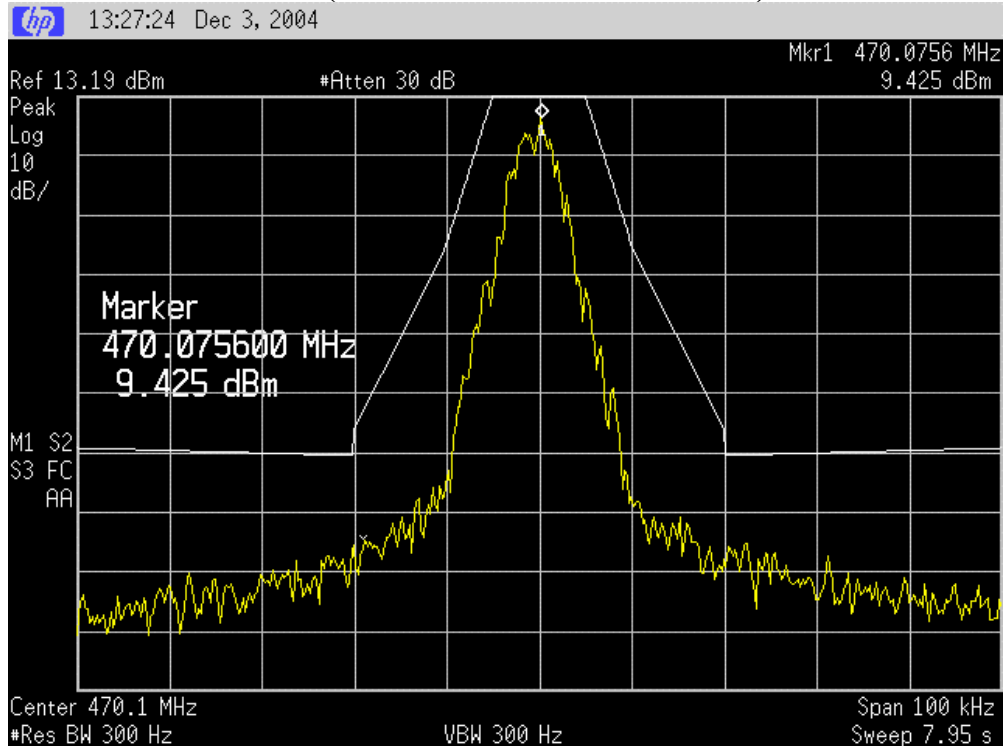
EMC Technologies (NZ) Ltd

Test Report No 41123.1
Report date: 29th November 2004

Part 22: F3E – 25 kHz (Authorised bandwidth = 16.0 kHz)



Part 22: F1E – 12.5 kHz (Authorised bandwidth = 8.1 kHz)



EMC Technologies (NZ) Ltd

STREET ADDRESS - 47 MacKelvie Street, Grey Lynn, Auckland, New Zealand
POSTAL ADDRESS - PO Box 68 307, Newton, Auckland, New Zealand

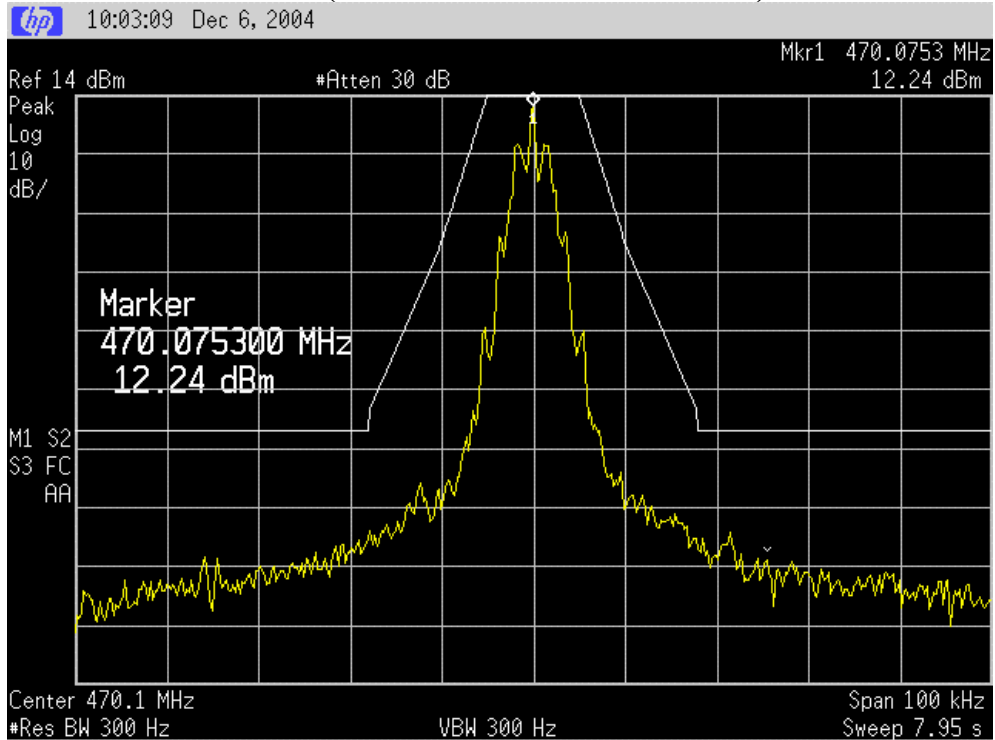
Telephone: +64 9 360 0862 Fax: +64 9 360 0861
E-mail: aucklab@ihug.co.nz

EMC Technologies (NZ) Ltd

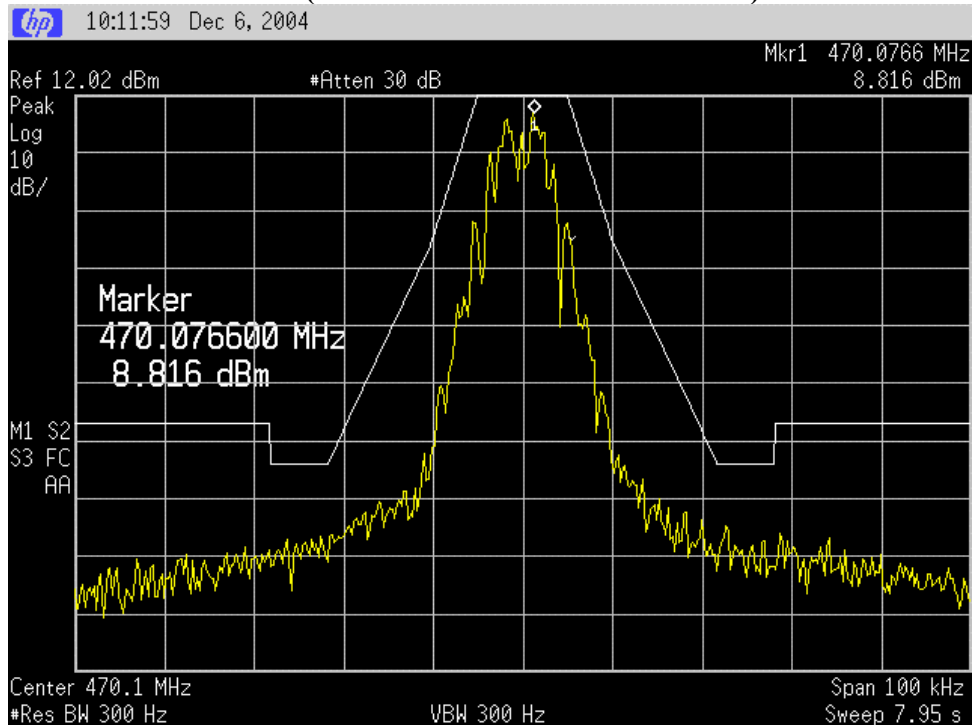
Test Report No 41123.1

Report date: 29th November 2004

Part 22: F1D – 12.5 kHz (Authorised bandwidth = 7.2 kHz)



Part 22: F1D – 25 kHz (Authorised bandwidth = 11.1 kHz)



EMC Technologies (NZ) Ltd

STREET ADDRESS - 47 MacKelvie Street, Grey Lynn, Auckland, New Zealand
POSTAL ADDRESS - PO Box 68 307, Newton, Auckland, New Zealand

Telephone: +64 9 360 0862 Fax: +64 9 360 0861
E-mail: aucklab@ihug.co.nz

EMC Technologies (NZ) Ltd

Test Report No 41123.1

Report date: 29th November 2004

Transmitter spurious emissions at the antenna terminals

Frequency: 470.0750 MHz

Measured Spurious Emission		
Spurious emission (MHz)	Emission level (dBm)	Limit (dBm)
940.1500	-37.5	-20.0
1410.2250	-46.7	-20.0
1880.3000	Less than -55.0	-20.0
2350.3750	Less than -55.0	-20.0
2820.4500	Less than -55.0	-20.0
3290.5250	Less than -55.0	-20.0
3760.6000	Less than -55.0	-20.0
4230.6750	Less than -55.0	-20.0
4700.7500	Less than -55.0	-20.0
459.3755	-52.5	-20.0

Limit:

Part 90.210(d) Mask D, (3) on any frequency removed from the centre of the authorised bandwidth by a displacement frequency of more than 12.5 kHz shall be attenuated by at least $50 + 10 \log(P)$ or 70 dB whichever is the lesser attenuation.

The spurious emission limit defined by Mask D has been applied as this transmitter can operate using channel spacings of 12.5 kHz.

Part 2.1051 states that emissions greater than 20 dB below the limit need not be specified.

Part 2.1057 states that the spectrum should be investigated up to the 10th harmonic if the transmitter operates below 10 GHz.

A rated power of 25.0 watts gives a limit of -20 dBm.

Some emissions less than -40 dBm have been reported for completeness.

No measurements were made above the 10th harmonic.

Result: Complies

Measurement Uncertainty: ± 3.3 dB

EMC Technologies (NZ) Ltd

STREET ADDRESS - 47 MacKelvie Street, Grey Lynn, Auckland, New Zealand
POSTAL ADDRESS - PO Box 68 307, Newton, Auckland, New Zealand

Telephone: +64 9 360 0862 Fax: +64 9 360 0861
E-mail: aucklab@ihug.co.nz

EMC Technologies (NZ) Ltd

Test Report No 41123.1

Report date: 29th November 2004

Receiver Spurious emissions at antenna terminals

Receive frequency: 470.0750 MHz

Intermediate frequency: 45.000 MHz

Measured Spurious Emission		
Spurious emission (MHz)	Emission level (dBm)	Limit (dBm)
425.0755	-87.5	-57.0

All other emissions observed less than -90.0 dBm.

Limit:

In accordance with CFR 47 Part 15, section 15.111 the power of any emission at the antenna terminal should not exceed 2 nW (-57.0 dBm).

Result: Complies

Measurement Uncertainty: ± 3.3 dB

EMC Technologies (NZ) Ltd

STREET ADDRESS - 47 MacKelvie Street, Grey Lynn, Auckland, New Zealand
POSTAL ADDRESS - PO Box 68 307, Newton, Auckland, New Zealand

Telephone: +64 9 360 0862 Fax: +64 9 360 0861
E-mail: aucklab@ihug.co.nz

EMC Technologies (NZ) Ltd

Test Report No 41123.1

Report date: 29th November 2004

Field strength of the transmitter spurious emissions

Frequency: 470.0750 MHz

Frequency (MHz)	Level (dBuV/m)	Power (dBm)	Limit (dBm)	Polarity	Margin (dB)
940.1500	44.2	-53.2	-20.0	Horizontal	33.2
940.1500	43.7	-53.7	-20.0	Vertical	33.7
1410.2250	53.7	-43.7	-20.0	Horizontal	23.7
1410.2250	53.7	-43.7	-20.0	Vertical	23.7
1880.3000	61.7	-35.7	-20.0	Horizontal	15.7
1880.3000	62.5	-34.9	-20.0	Vertical	14.9
2350.3750	63.5	-33.9	-20.0	Horizontal	13.9
2350.3750	67.0	-30.4	-20.0	Vertical	10.4
2820.4500	54.7	-42.7	-20.0	Horizontal	22.7
2820.4500	67.0	-30.4	-20.0	Vertical	10.4
3290.5250	45.6	-51.8	-20.0	Horizontal	31.8
3290.5250	47.7	-49.7	-20.0	Vertical	29.7
3760.6000	45.5	-51.9	-20.0	Horizontal	31.9
3760.6000	52.0	-45.4	-20.0	Vertical	25.4
4230.6750	42.0	-55.4	-20.0	Horizontal	35.4
4230.6750	45.0	-52.4	-20.0	Vertical	32.4
4700.7500	48.0	-49.4	-20.0	Horizontal	29.4
4700.7500	54.0	-43.4	-20.0	Vertical	23.4

Device was tested on an open area test site at a distance of 3 metres.

Testing was carried out at EMC Technologies NZ Ltd Open Area Test Site, which is located at Driving Creek, Orere Point, Auckland. Details of this site have been filed with the Commission, Registration Number: 90838, which was last updated on February 17th, 2004.

The transmitter was tested while transmitting continuously while attached to a dummy load.

The power level of each emission was determined by replacing the transmitter with a dipole antenna that was connected to a signal generator. The signal generator output level was increased until the same field strength level was observed at each emission frequency.

The level recorded is the signal generator output level in dBm less any gains / losses due to the coax cable and the dipole antenna.

EMC Technologies (NZ) Ltd

STREET ADDRESS - 47 MacKelvie Street, Grey Lynn, Auckland, New Zealand
POSTAL ADDRESS - PO Box 68 307, Newton, Auckland, New Zealand

Telephone: +64 9 360 0862 Fax: +64 9 360 0861
E-mail: aucklab@ihug.co.nz

EMC Technologies (NZ) Ltd

Test Report No 41123.1

Report date: 29th November 2004

Limit:

All spurious emissions are to be attenuated by at least $50 + 10 \log (P)$.

The rated power of 25 watts gives a limit of -20 dBm.

No measurements were made above the 10th harmonic.

Result: Complies

Measurement Uncertainty: ± 4.1 dB

EMC Technologies (NZ) Ltd

Test Report No 41123.1

Report date: 29th November 2004

Field strength of the receiver spurious emissions

Frequency: 470.0750 MHz Intermediate frequency: 45.000 MHz

Frequency (MHz)	Level (dBuV/m)	Limit (dBuV/m)	Polarity	Margin (dB)
367.2000	21.5	46.0	Horizontal	-24.5
425.0750	25.6	46.0	Vertical	-20.4
425.0750	33.0	46.0	Horizontal	-13.0
850.1500	28.7	46.0	Horizontal	-17.3

Device was tested on an open area test site at a distance of 3 metres.

Testing was carried out at EMC Technologies NZ Ltd Open Area Test Site, which is located at Driving Creek, Orere Point, Auckland. Details of this site have been filed with the Commission, Registration Number: 90838, which was last updated on February 17th, 2004.

Below 1000 MHz a quasi peak detector was used with a bandwidth of 120 kHz.

Above 1000 MHz an average detector was used with a bandwidth of 1 MHz.

The receiver was tested while receiving continuously while attached to a dummy load.

Limit:

The field strength limits as per CFR 47 Part 15, section 15.109 have been applied.

Result: Complies

EMC Technologies (NZ) Ltd

Test Report No 41123.1

Report date: 29th November 2004

Frequency Stability

Frequency stability measurements were between - 30 °C and + 50°C in 10°C increments.

At each temperature the transmitter was given a period of 30 minutes to stabilise. The transmitter was then turned on and the frequency error measured after a period of 1 minute.

Measurements were made with the supply varied between 115% and 85% of the nominal supply voltage (13.8 Vdc).

Nominal Frequency: 470.0750 MHz

Voltage Temp.	Frequency Error (Hz)		
	11.7 Vdc	13.8 Vdc	15.9 Vdc
+50°C	-163.0	-160.0	-163.0
+40°C	-163.0	-159.0	-163.0
+30°C	-158.0	-159.0	-159.0
+20°C	-131.0	-132.0	-133.0
+10°C	-115.0	-117.0	-118.0
0°C	-13.0	-16.0	-14.0
-10°C	+189.0	+189.0	+189.0
-20°C	+319.0	+320.0	+320.0
-30°C	+185.0	+185.0	+185.0

Limit:

Part 22.355 and Part 90.213 state that mobile station transmitters operating between 421 – 512 MHz with 12.5 kHz channelling are required to have a frequency tolerance of 2.5 ppm.

This transmitter operates on 470.0750 MHz. $2.5 \text{ ppm} = 2.5 \times 470 = 1175 \text{ Hz}$.

Result: Complies

Measurement Uncertainty: $\pm 30 \text{ Hz}$

EMC Technologies (NZ) Ltd

Test Report No 41123.1

Report date: 29th November 2004

Transient frequency behaviour

Transient frequency behaviour measurements are applicable to wide band and narrow band transmitters operating in the frequency band 421 – 512 MHz.

Measurements were carried out at 470.0750 MHz using the method described in TIA-603 and EN 300-086.

In summary this method calls for the use of an external signal generator tuned to 470.0750 MHz with a output level 0.1 % (-30 dB) of the level from the transmitter with a 1 kHz tone with a frequency deviation of 12.5 kHz being applied to the input of a modulation analyser along with the output from the transmitter.

The modulation analyser produces an amplitude difference signal and a frequency difference signal, which are applied to the input of a storage oscilloscope.

The unmodulated transmitter is then keyed which produces a trigger pulse that is AC coupled to the oscilloscope that produces a display on the screen.

The result of the change in the ratio of power between the test signal from the signal generator and the transmitter output will produce 2 separate sides on the oscilloscope picture. One will show the 1000 Hz test modulation and the other will be the frequency difference of the transmitter versus time.

Measured Transient Deviation		
Period t ₁ (ms)	period t ₂ (ms)	period t ₃ (ms)
10.0	25.0	10.0
Frequency Difference from the Nominal Frequency (kHz)		
12.5 kHz: Less than 3.0	Less than 3.0	Less than 3.0
25.0 kHz: Nil	nil	Less than 3.0 kHz

Limits:

Channel Spacing (kHz)	Transmitter Period t ₁ (kHz)	Transmitter Period t ₂ (kHz)	Transmitter Period t ₃ (kHz)
12.5	± 12.5	± 6.25	± 12.5
25.0	± 25.0	± 12.5	± 25.0

Result: Complies

Measurement Uncertainty: *Frequency difference ±1.6 kHz*

Time period ±1 ms

EMC Technologies (NZ) Ltd

STREET ADDRESS - 47 MacKelvie Street, Grey Lynn, Auckland, New Zealand
POSTAL ADDRESS - PO Box 68 307, Newton, Auckland, New Zealand

Telephone: +64 9 360 0862 Fax: +64 9 360 0861
E-mail: aucklab@ihug.co.nz

EMC Technologies (NZ) Ltd

Test Report No 41123.1

Report date: 29th November 2004

12.5 kHz transmitter turn on

Green Trace = 1 kHz tone with FM deviation of 12.5 kHz and any transient.
Black trace = transmitter amplitude response (AC coupled)(Information only).

Green trace has been maximised to give full screen indication of a ± 12.5 kHz.
Therefore each Y axis division = 3.125 kHz per division.
The X axis has been set to a sweep rate of 10 mS/division.

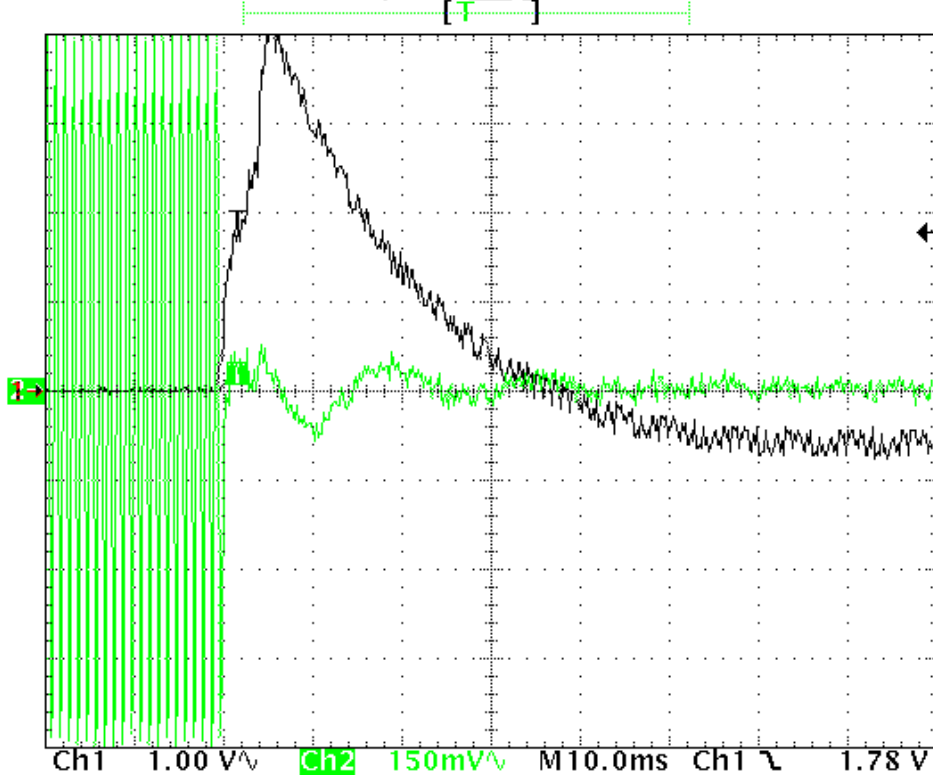
Triggering has been set to occur 2 divisions from the left hand edge (20 mS).
This is position *ton*.

t1 occurs between 2.0 and 2.5 divisions from the left-hand edge.

t2 occurs between 2.5 and 4.5 divisions from the left-hand edge.

No transient responses can be observed.

Tek Run: 5.00kS/s Sample **11102**



18 Nov 2004
09:52:45

EMC Technologies (NZ) Ltd

STREET ADDRESS - 47 MacKelvie Street, Grey Lynn, Auckland, New Zealand
POSTAL ADDRESS - PO Box 68 307, Newton, Auckland, New Zealand

Telephone: +64 9 360 0862 Fax: +64 9 360 0861
E-mail: aucklab@ihug.co.nz

EMC Technologies (NZ) Ltd

Test Report No 41123.1

Report date: 29th November 2004

12.5 kHz transmitter turn off

Green Trace = 1 kHz tone with FM deviation of 12.5 kHz and any transient.
Black trace = transmitter amplitude response (AC coupled)(Information only).

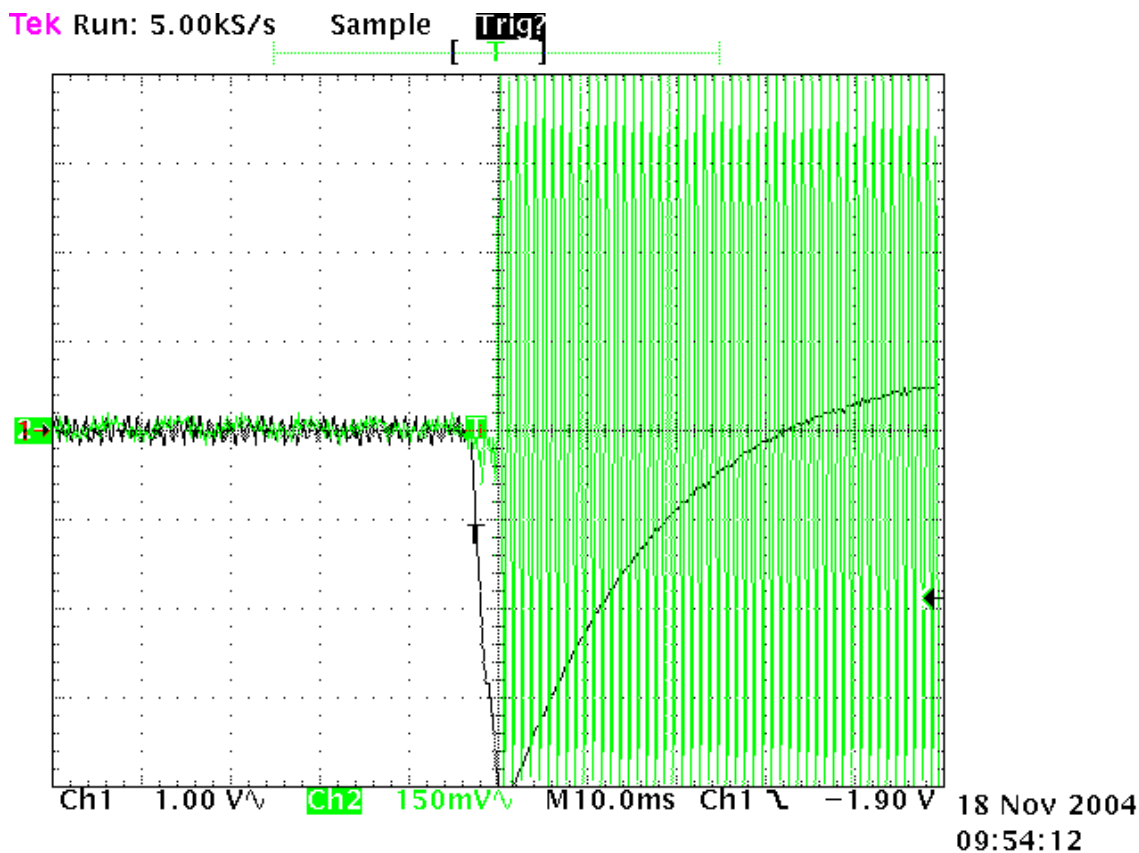
Green trace has been maximised to give full screen indication of a ± 12.5 kHz.
Therefore each Y axis division = 3.125 kHz per division.
The X axis has been set to a sweep rate of 10 mS/division.

The display of the 1 kHz signal rising has been positioned 5 divisions from the left hand edge (50 mS).

This is position *toff*.

t3 occurs between 4.5 and 5.0 divisions from the left hand edge.

A small transient response can be observed just before *toff*.



EMC Technologies (NZ) Ltd

STREET ADDRESS - 47 MacKelvie Street, Grey Lynn, Auckland, New Zealand
POSTAL ADDRESS - PO Box 68 307, Newton, Auckland, New Zealand

Telephone: +64 9 360 0862 Fax: +64 9 360 0861
E-mail: aucklab@ihug.co.nz

EMC Technologies (NZ) Ltd

Test Report No 41123.1

Report date: 29th November 2004

25 kHz transmitter turn on

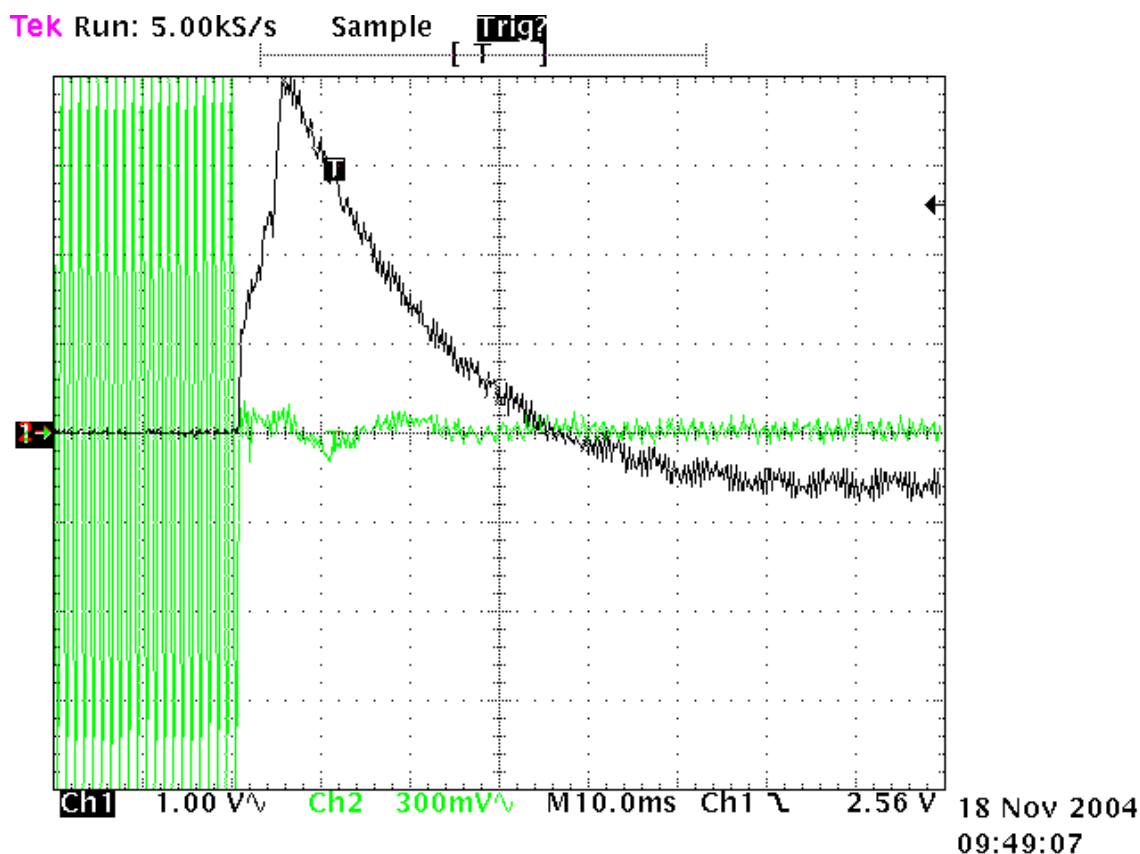
Green Trace = 1 kHz tone with FM deviation of 25 kHz and any transient.
Black trace = transmitter amplitude response (AC coupled)(Information only).

Green trace has been maximised to give full screen indication of a ± 25 kHz.
Therefore each Y axis division = 6.25 kHz per division.
The X axis has been set to a sweep rate of 10 mS/division.

Triggering has been set to occur 2 divisions from the left hand edge (20 mS).
This is position *ton*.

t1 occurs between 2.0 and 2.5 divisions from the left-hand edge.
t2 occurs between 2.5 and 4.5 divisions from the left-hand edge.

No transient responses can be observed.



EMC Technologies (NZ) Ltd

STREET ADDRESS - 47 MacKelvie Street, Grey Lynn, Auckland, New Zealand
POSTAL ADDRESS - PO Box 68 307, Newton, Auckland, New Zealand

Telephone: +64 9 360 0862 Fax: +64 9 360 0861
E-mail: aucklab@ihug.co.nz

EMC Technologies (NZ) Ltd

Test Report No 41123.1
Report date: 29th November 2004

25 kHz transmitter turn off

Green Trace = 1 kHz tone with FM deviation of 25 kHz and any transient.
Black trace = transmitter amplitude response (AC coupled)(Information only).

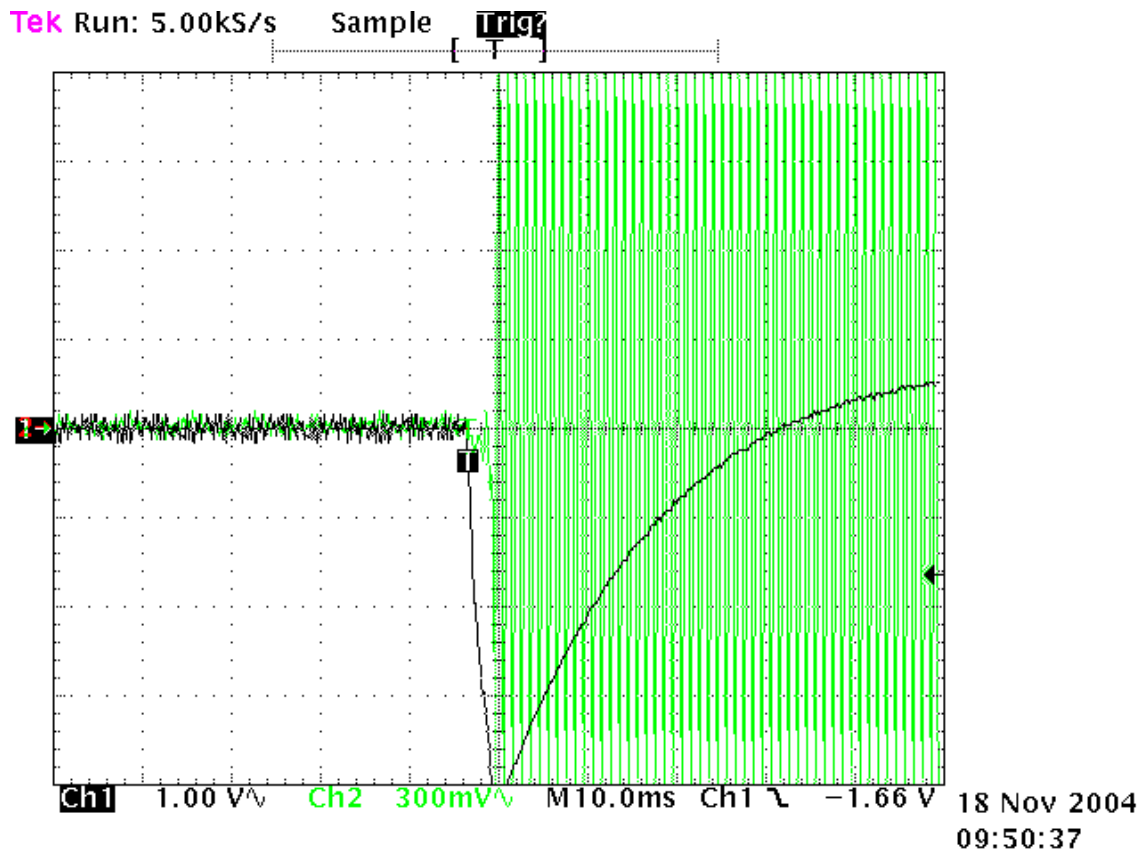
Green trace has been maximised to give full screen indication of a ± 25 kHz.
Therefore each Y axis division = 6.25 kHz per division.
The X axis has been set to a sweep rate of 10 mS/division.

The display of the 1 kHz signal rising has been positioned 5 divisions from the left hand edge (50 mS).

This is position *toff*.

t_3 occurs between 4.5 and 5.0 divisions from the left hand edge.

A very small transient can be observed just before *toff*.



EMC Technologies (NZ) Ltd

STREET ADDRESS - 47 MacKelvie Street, Grey Lynn, Auckland, New Zealand
POSTAL ADDRESS - PO Box 68 307, Newton, Auckland, New Zealand

Telephone: +64 9 360 0862 Fax: +64 9 360 0861
E-mail: aucklab@ihug.co.nz

EMC Technologies (NZ) Ltd

Test Report No 41123.1

Report date: 29th November 2004

Radio Frequency Hazard Information

As per Section 1.1310 and Section 2.1091 certification of this transmitters is sought using the Controlled / Occupational exposure limits as detailed in OST/OET Bulletin Number 65 as a power of 25 watts is to be used in a mobile environment where the use of the transmitter will be employment related.

In addition calculations have been made using the General Public/Uncontrolled Exposure limits.

Minimum safe distances have been calculated below.

In accordance with Section 1.1310 the following Maximum Permissible Exposure (MPE) power density limits have been applied:

- Occupational / Controlled Exposure of $1.46 \text{ mW/cm}^2 (f/300 = 440 \text{ MHz}/300)$

- General Population / Uncontrolled exposure of $0.29 \text{ mW/cm}^2 (f/1500 = 440 \text{ MHz}/1500)$

The minimum distance from the antenna at which the MPE is met is calculated from the equation relating field strength in V/m, transmit power in watts, transmit antenna gain, transmitter duty cycle and separation distance in metres:

$$E, \text{ V/m} = (\sqrt{30 * P * G}) / d$$

Controlled

$$E = 1.46 \text{ mW/cm}^2 = E^2/3770$$

$$E = \sqrt{1.46 * 3770}$$

$$E = \underline{74.2 \text{ V/m}}$$

Uncontrolled

$$E = 0.29 \text{ mW/cm}^2 = E^2/3770$$

$$E = \sqrt{0.29 * 3770}$$

$$E = \underline{33.1 \text{ V/m}}$$

The rated maximum transmitter power = 25 watts.

Transmitter operated using a quarter wave whip antenna with a gain of 2.15 dBi (1.64).

The transmitter is a push to talk device that would typically be used with a duty cycle of 50% in a 6 minute period or a 30 minute period.

Controlled

$$d = \sqrt{30 * P * G * DC} / E$$

$$d = \sqrt{30 * 25.0 * 1.64 * 0.5} / 74.2$$

$$d = \underline{0.3342 \text{ metres or } 34 \text{ cm}}$$

Uncontrolled

$$d = \sqrt{30 * 25.0 * 1.64 * 0.5} / 33.1$$

$$d = \underline{0.7492 \text{ metres or } 75 \text{ cm}}$$

Result: Complies

EMC Technologies (NZ) Ltd

STREET ADDRESS - 47 MacKelvie Street, Grey Lynn, Auckland, New Zealand
POSTAL ADDRESS - PO Box 68 307, Newton, Auckland, New Zealand

Telephone: +64 9 360 0862 Fax: +64 9 360 0861
E-mail: aucklab@ihug.co.nz

EMC Technologies (NZ) Ltd

Test Report No 41123.1

Report date: 29th November 2004

8. TEST EQUIPMENT USED

Instrument	Manufacturer	Model	Serial #	Asset
Aerial Controller	EMCO	1090	9112-1062	RFS 3710
Aerial Mast	EMCO	1070-1	9203-1661	RFS 3708
Attenuator 10 dB	Hewlett Packard	HP8491A	24838	E1329
Attenuator 20 dB	Weinschel	49-20-43	GC-104	E1308
Audio Analyzer	Hewlett Packard	8903A	2216A01713	E1146
Biconical Antenna	Schwarzbeck	BBA 9106		RFS 3612
Frequency Counter	Hewlett Packard	HP 5342A	1916A01713	E1224
Level generator	Anritsu	MG443B	M61689	E1143
Log Periodic Antenna	Schwarzbeck	UHALP 9107		RFS 3702
Measurement Receiver	Rohde & Schwarz	ESCS 30	839873/1	
Modulation Analyzer	Rohde & Schwarz	FMA	837807/020	E1552
Modulation Analyzer	Hewlett Packard	8901B	2608A00782	E1090
Oscilloscope	Tektronics	745A	B010643	1569
Power Attenuator	Weinschel	49-20-43	GC104	E1308
Power Supply	Hewlett Packard	6032A	2743A-02859	E1069
RF Power Meter	Hewlett Packard	HP 436A	2512A22439	E1198
Rubidium Oscillator	Ball Efratom	FRS – C	4287	E1053
Selective Level Meter	Anritsu	ML422C	M35386	E1140
Signal Generator	Rohde & Schwarz	SMHU.58	838923/028	E1493
Spectrum Analyzer	Hewlett Packard	E7405A	US39150142	3776
Thermal chamber	Contherm	M180F	86025	E1129
Thermometer	DSIR	RT200	035	E1049
Turntable	EMCO	1080-1-2.1	9109-1578	RFS 3709
Variac	General Radio	1592	-	3690

9. ACCREDITATIONS

Testing was carried out in accordance with EMC Technologies NZ Ltd registration with the Federal Communications Commission as a listed facility, Registration Number: 90838, which was last updated on February 17th, 2004.

All testing has been carried out in accordance with the terms of EMC Technologies (NZ) Ltd's International Accreditation New Zealand (IANZ) Accreditation to ISO/IEC 17025.

All measurement equipment has been calibrated in accordance with the terms of EMC Technologies (NZ) Ltd's International Accreditation New Zealand (IANZ) Accreditation to ISO/IEC 17025.

International Accreditation New Zealand has Mutual Recognition Arrangements for testing and calibration with 46 accreditation bodies in 34 economies. This includes NATA (Australia), UKAS (UK), SANAS (South Africa), NVLAP (USA), A2LA (USA), SWEDAC (Sweden). Further details can be supplied on request.

EMC Technologies (NZ) Ltd

STREET ADDRESS - 47 MacKelvie Street, Grey Lynn, Auckland, New Zealand
POSTAL ADDRESS - PO Box 68 307, Newton, Auckland, New Zealand

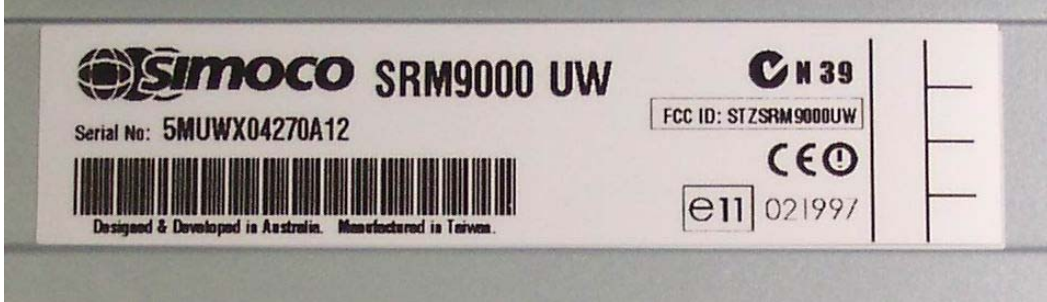
Telephone: +64 9 360 0862 Fax: +64 9 360 0861
E-mail: aucklab@ihug.co.nz

EMC Technologies (NZ) Ltd

Test Report No 41123.1
Report date: 29th November 2004

10. PHOTOGRAPH (S)

Sample Product Label



RF Exposure label location



EMC Technologies (NZ) Ltd

STREET ADDRESS - 47 MacKelvie Street, Grey Lynn, Auckland, New Zealand
POSTAL ADDRESS - PO Box 68 307, Newton, Auckland, New Zealand

Telephone: +64 9 360 0862 Fax: +64 9 360 0861
E-mail: aucklab@ihug.co.nz

EMC Technologies (NZ) Ltd

Test Report No 41123.1

Report date: 29th November 2004

Overall Photo



Case Front View



Case Rear View



EMC Technologies (NZ) Ltd

STREET ADDRESS - 47 MacKelvie Street, Grey Lynn, Auckland, New Zealand
POSTAL ADDRESS - PO Box 68 307, Newton, Auckland, New Zealand

Telephone: +64 9 360 0862 Fax: +64 9 360 0861
E-mail: aucklab@ihug.co.nz

EMC Technologies (NZ) Ltd

Test Report No 41123.1
Report date: 29th November 2004

Case - Top



Case - Bottom



EMC Technologies (NZ) Ltd

STREET ADDRESS - 47 MacKelvie Street, Grey Lynn, Auckland, New Zealand
POSTAL ADDRESS - PO Box 68 307, Newton, Auckland, New Zealand

Telephone: +64 9 360 0862 Fax: +64 9 360 0861
E-mail: aucklab@ihug.co.nz

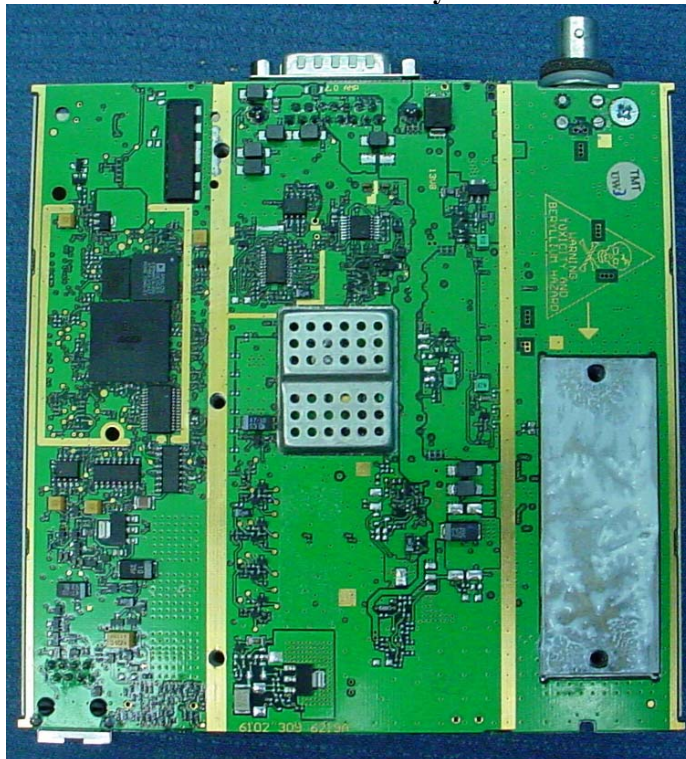
EMC Technologies (NZ) Ltd

Test Report No 41123.1
Report date: 29th November 2004

PCB Top Layer



PCB Bottom Layer



EMC Technologies (NZ) Ltd

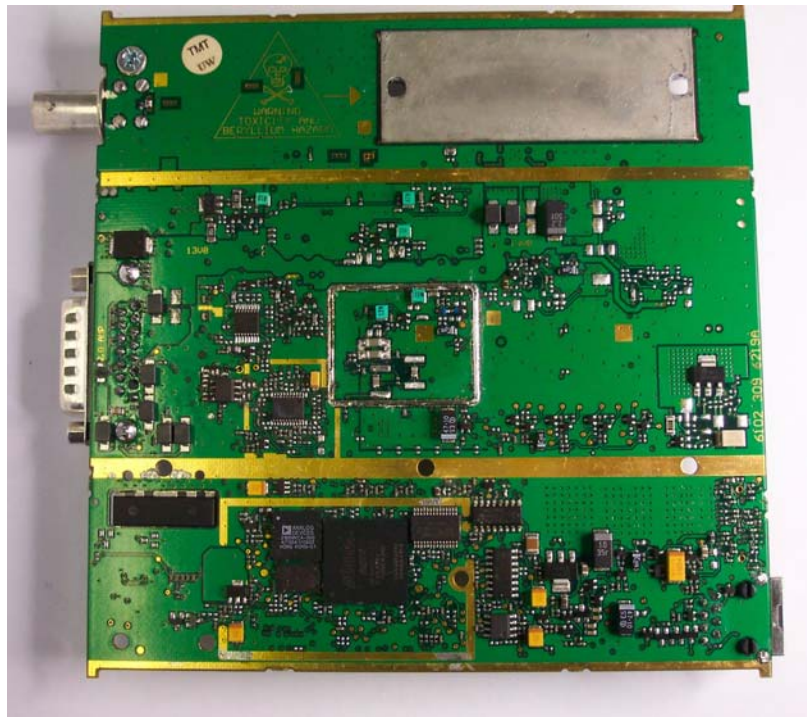
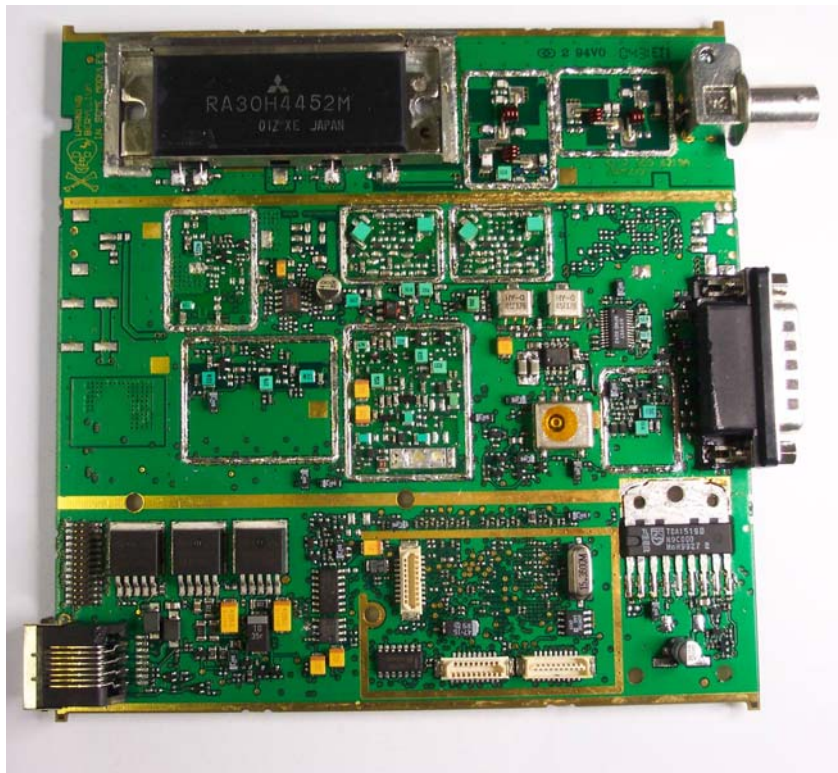
STREET ADDRESS - 47 MacKelvie Street, Grey Lynn, Auckland, New Zealand
POSTAL ADDRESS - PO Box 68 307, Newton, Auckland, New Zealand

Telephone: +64 9 360 0862 Fax: +64 9 360 0861
E-mail: aucklab@ihug.co.nz

EMC Technologies (NZ) Ltd

Test Report No 41123.1
Report date: 29th November 2004

Internal Photos with the Shields Removed



EMC Technologies (NZ) Ltd

STREET ADDRESS - 47 MacKelvie Street, Grey Lynn, Auckland, New Zealand
POSTAL ADDRESS - PO Box 68 307, Newton, Auckland, New Zealand

Telephone: +64 9 360 0862 Fax: +64 9 360 0861
E-mail: aucklab@ihug.co.nz

EMC Technologies (NZ) Ltd

Test Report No 41123.1

Report date: 29th November 2004

Radiated emissions test set up



EMC Technologies (NZ) Ltd

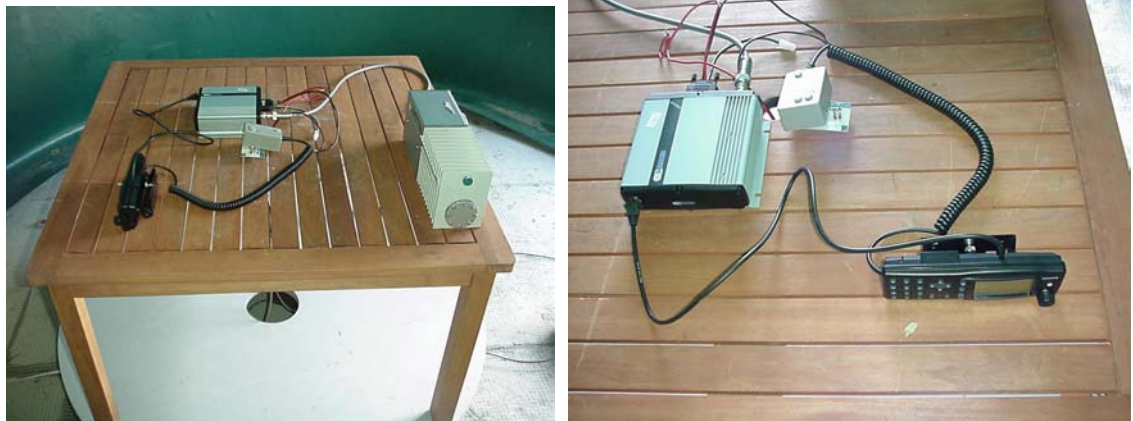
STREET ADDRESS - 47 MacKelvie Street, Grey Lynn, Auckland, New Zealand
POSTAL ADDRESS - PO Box 68 307, Newton, Auckland, New Zealand

Telephone: +64 9 360 0862 Fax: +64 9 360 0861
E-mail: aucklab@ihug.co.nz

EMC Technologies (NZ) Ltd

Test Report No 41123.1

Report date: 29th November 2004



EMC Technologies (NZ) Ltd

STREET ADDRESS - 47 MacKelvie Street, Grey Lynn, Auckland, New Zealand
POSTAL ADDRESS - PO Box 68 307, Newton, Auckland, New Zealand

Telephone: +64 9 360 0862 Fax: +64 9 360 0861
E-mail: aucklab@ihug.co.nz