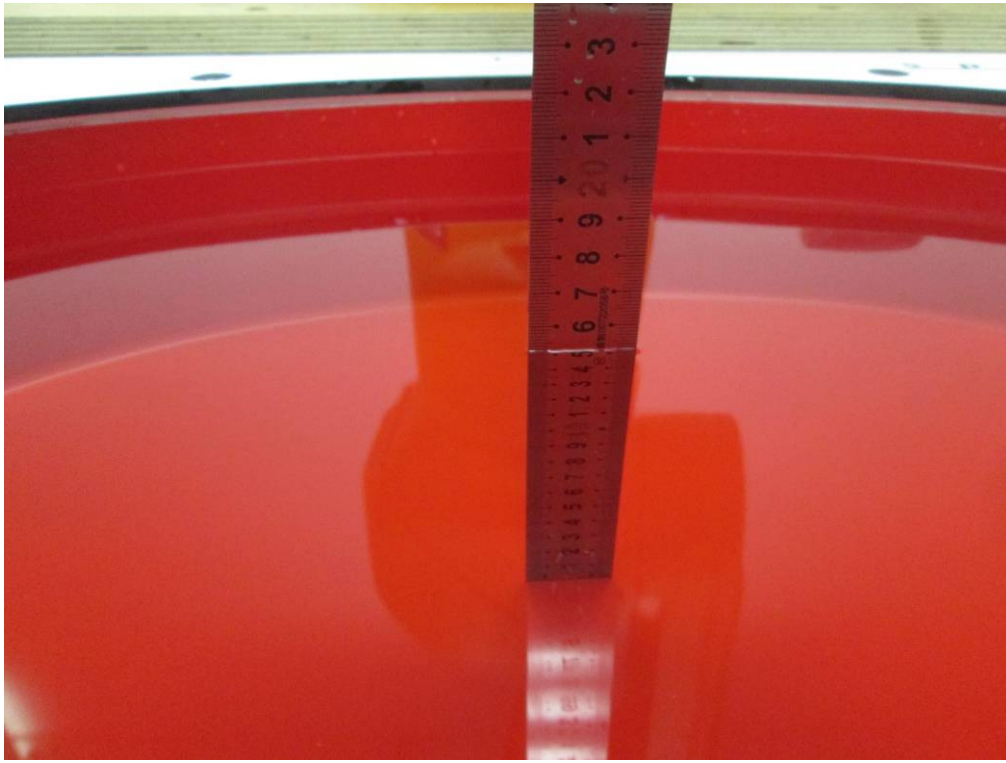
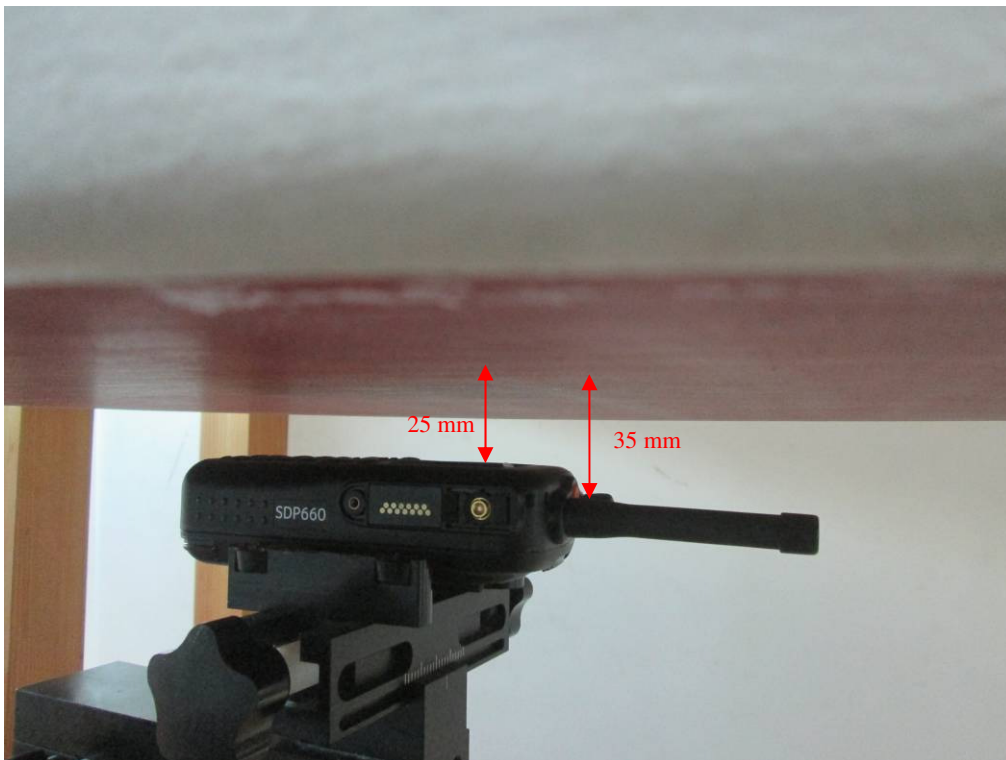


APPENDIX C EUT TEST POSITION PHOTOS

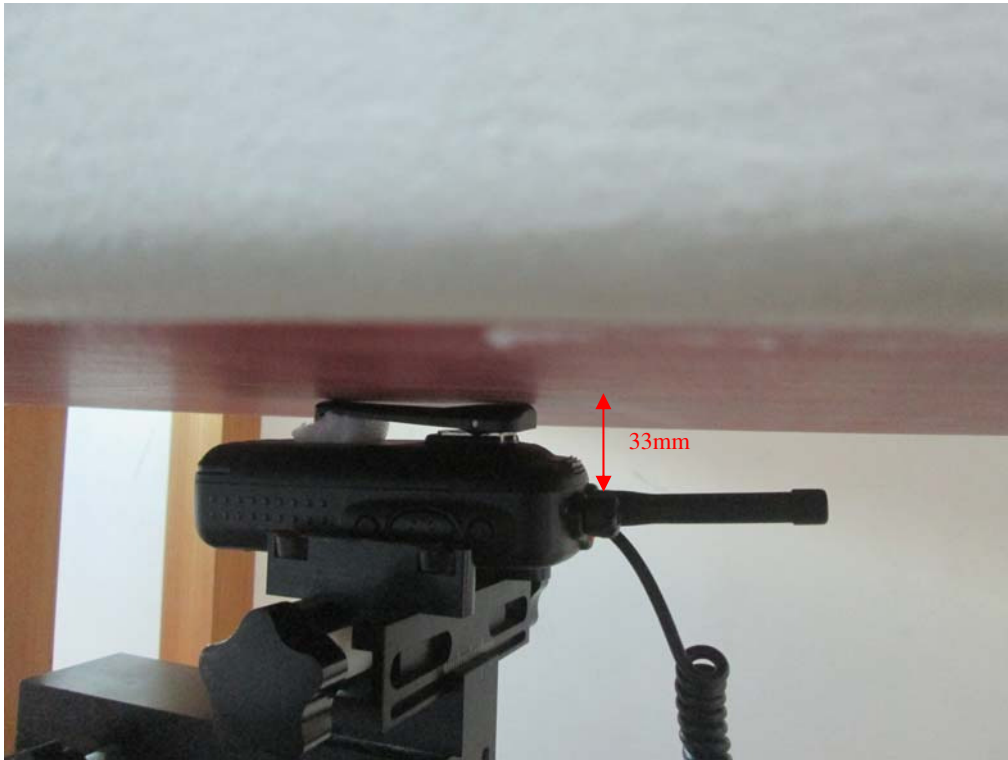
Liquid depth $\geq 15\text{cm}$



Face up (2.5cm) (SDP660 TU, Antenna 1#)



Body-Back with Belt Clip (0.0cm) (SDP660 TU, Antenna 1#)



Face up (2.5cm) (SDP660 TU, Antenna 2#)



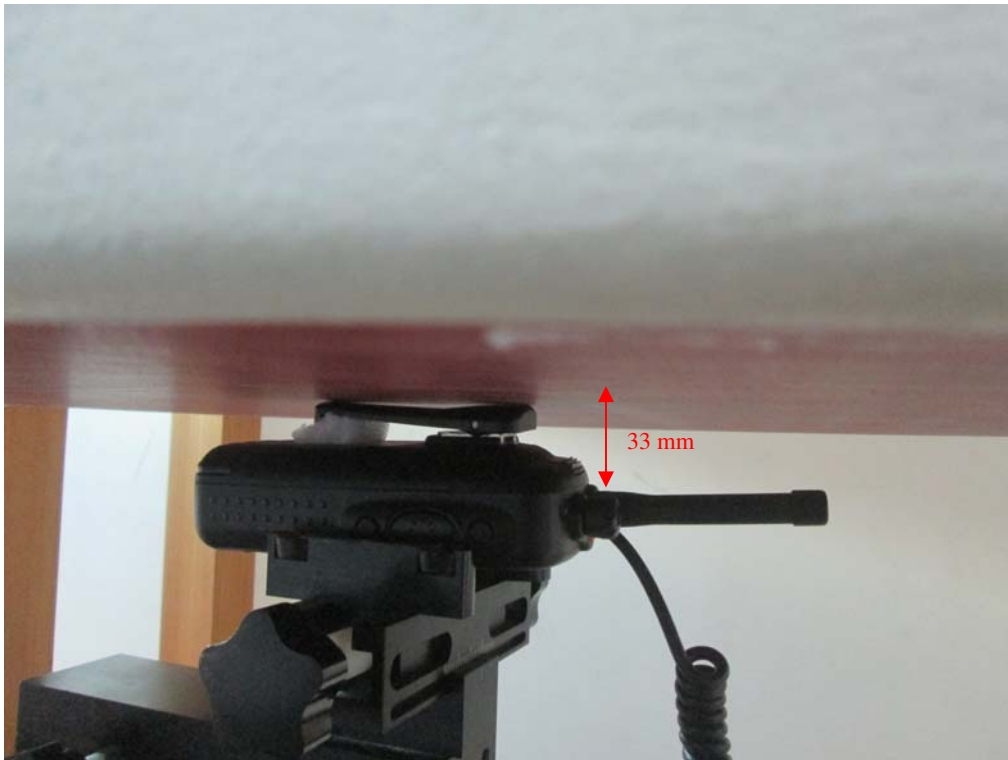
Body-Back with Belt Clip (0.0cm) (SDP660 TU, Antenna 2#)



Face up (2.5cm) (SDP650 TU, Antenna 1#)



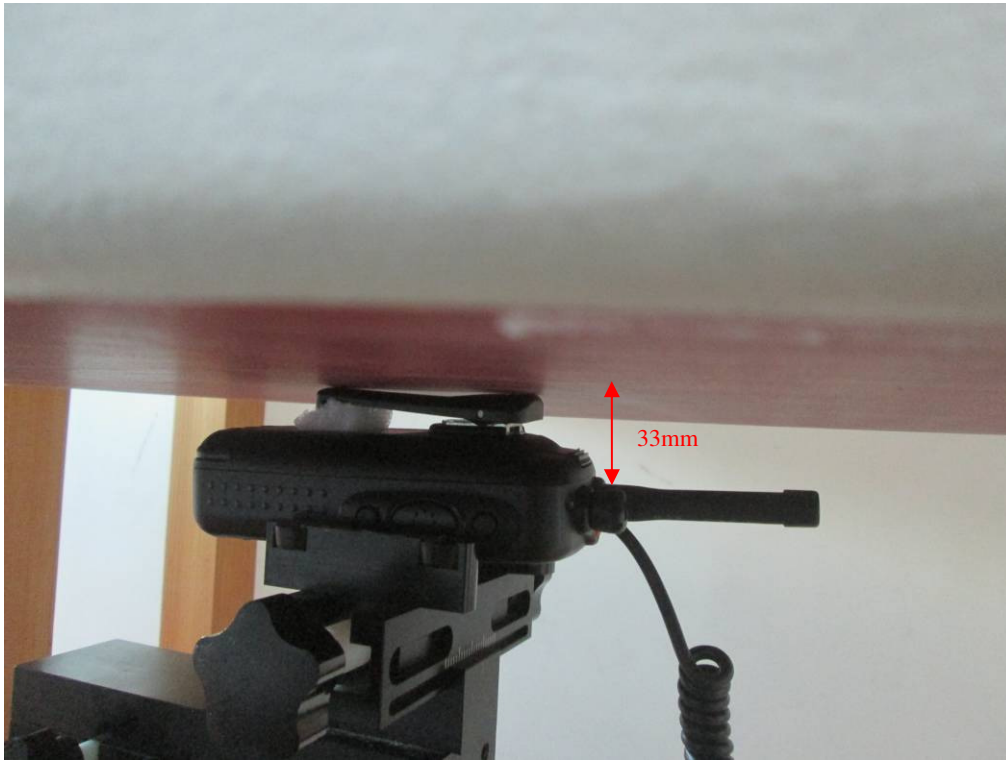
Body-Back with Belt Clip (0.0cm) (SDP650 TU, Antenna 1#)



Face up (2.5cm) (SDP650 TU, Antenna 2#)



Body-Back with Belt Clip (0.0cm) (SDP650 TU, Antenna 2#)



APPENDIX C – EUT PHOTOS

EUT – Front View (SDP660 TU)



EUT – Back View (SDP660 TU)



EUT-Left View (SDP660 TU)



EUT-Right View (SDP660 TU)



EUT-Top View (SDP660 TU)



EUT-Bottom View (SDP660 TU)



EUT-Uncover View (SDP660 TU)



EUT – Front View (SDP650 TU)



EUT – Back View (SDP650 TU)



EUT–Left View (SDP650 TU)



EUT-Right View (SDP650 TU)



EUT-Top View (SDP650 TU)



EUT-Bottom View (SDP650 TU)



EUT-Uncover View (SDP650 TU)



EUT-Antenna



EUT-Belt-clip



EUT-Battery



EUT-Speaker microphone

