

Klipsch

AUTHENTIC
AMERICAN
AUDIO



SINCE 1946

Flexus SUB 100

Subwoofer | Caisson de graves | 低音炮 | サブウーファー

KLIPSCH CONNECT APP

APPLICATION KLIPSCH CONNECT • APLICACIÓN KLIPSCH CONNECT • KLIPSCH CONNECT APP • APP KLIPSCH CONNECT • APLICATIVO KLIPSCH CONNECT
KLIPSCH CONNECT应用 • KLIPSCH CONNECTアプリ



1. **Download the Klipsch Connect app**
2. **Follow the instructions**

ADD TO YOUR SYSTEM

Flexus Sound System is built to grow with you. Add up to two wireless surround speakers and a second wireless subwoofer to create a home theater.

For more information, please visit: <link to Flexus landing page>

IMPORTANT SAFETY INSTRUCTIONS

1. Read these instructions
2. Keep these instructions
3. Heed all warnings
4. Follow all instructions
5. Do not use this apparatus near water
6. Clean only with dry cloth.
7. Do not block any ventilation openings. Install in accordance with the manufacture's instructions.
8. Do not install near any heat sources such as radiators, heat registers, stoves, or other apparatus (including amplifiers) that produce heat.
9. Do not defeat the safety purpose of the polarized or grounding plug. A polarized plug has two blades with one wider than the other. A grounding plug has two blades and a third grounding prong. The wide blade or the third prong is provided for your safety. If the provided plug does not fit into your outlet, consult an electrician for replacement of the obsolete outlet.
10. Protect the power cord from being walked on or pinched particularly at the plugs, convenience receptacles, and at the point where they exit from the apparatus.
11. Only use attachments/accessories specified by the manufacturer.
12. Use only with the cart, stand, tripod, bracket, or table specified by the manufacturer, or sold with the apparatus. When a cart or rack is used, use caution when moving the cart/apparatus combination to avoid injury from tip-over.



13. Unplug the apparatus during lightning storms or when unused for long periods of time. Refer all servicing to qualified personnel. Servicing is required when the apparatus has been damaged in any way, such as power supply cord or plug is damaged, liquid has been spilled or objects have fallen into the apparatus has been exposed to rain or moisture, does not operate normally, or has been dropped.

FCC AND CANADA EMC COMPLIANCE INFORMATION

1. This device complies with Part 15 of the FCC Rules. Operation is subject to the following two conditions:

(1) This device may not cause harmful interference, and (2) This device must accept any interference received, including interference that may cause undesired operation.

2. Any Changes or modifications not expressly approved by the party responsible for compliance could void the user's authority to operate the equipment.

NOTE: This equipment has been tested and found to comply with the limits for a Class B digital device, pursuant to Part 15 of the FCC Rules. These limits are designed to provide reasonable protection against harmful interference in a residential installation. This equipment generates uses and can radiate radio frequency energy and, if not installed and used in accordance with the instructions, may cause harmful interference to radio communications. However, there is no guarantee that interference will not occur in a particular installation. If this equipment does cause harmful interference to radio or television reception, which can be determined by turning the equipment off and on, the user is encouraged to try to correct the interference by one or more of the following measures:

- Reorient or relocate the receiving antenna.
- Increase the separation between the equipment and receiver.
- Connect the equipment into an outlet on a circuit different from that to which the receiver is connected.
- Consult the dealer or an experienced radio/TV technician for help.

FCC RF Radiation Exposure Statement

1. This equipment complies with FCC RF radiation exposure limits set forth for an uncontrolled environment.
2. This transmitter must not be colocated or operating in conjunction with any other antenna or transmitter.
3. This equipment complies with FCC radiation exposure limits set forth for an uncontrolled environment. This equipment should be installed and operated with minimum distance 20cm between the radiator & your body.

CE RF Radiation Exposure Statement

This device can be operated in at least one Member State without infringing applicable requirements on the use of radio spectrum.

This equipment complies with EU radiation exposure limits set forth for an uncontrolled environment.

This equipment should be installed and operated with minimum distance 20 cm between the radiator and your body.

This device complies with Industry Canada's licence-exempt RSSs. Operation is subject to

the following two conditions:

- (1) This device may not cause interference; and
- (2) This device must accept any interference, including interference that may cause undesired operation of the device

Le présent appareil est conforme aux CNR d'Industrie Canada applicables aux appareils radio exempts de licence. L'exploitation est autorisée aux deux conditions suivantes :

- (1) l'appareil ne doit pas produire de brouillage, et
- (2) l'utilisateur de l'appareil doit accepter tout brouillage radioélectrique subi, même si le brouillage est susceptible d'en compromettre le fonctionnement."

Radio Frequency (RF) Exposure Information

The radiated output power of the Wireless Device is below the Industry Canada (IC) radio frequency exposure limits. The Wireless Device should be used in such a manner such that the potential for human contact during normal operation is minimized.

This device has also been evaluated and shown compliant with the IC RF Exposure limits under mobile exposure conditions. (antennas are greater than 20cm from a person's body).

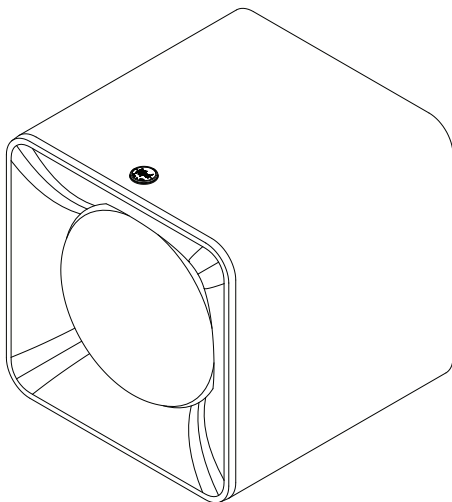
for each off mode, standby mode (or another condition which does not exceed the applicable power consumption requirements for off mode or standby mode) and networked standby into which the equipment is switched by the power management function or similar function:

- the power consumption expressed in watts rounded to the first decimal place;
- the period after which the equipment reaches automatically standby mode, off mode or networked standby in minutes and rounded to the nearest minute;

DC OUT 1 -----USB Type-C(5V/0.5A)

INSIDE

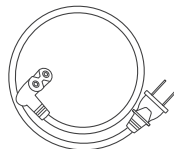
CONTENU • CONTENIDO • INHALT • CONTENUTO • CONTEÚDO • 内 • 内部



Subwoofer



Flexus Transmitter

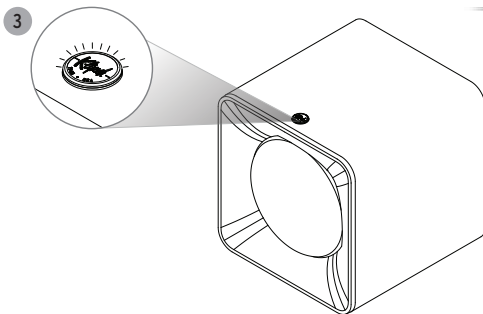
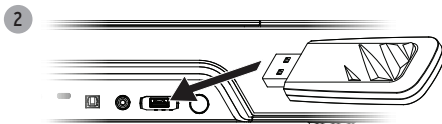
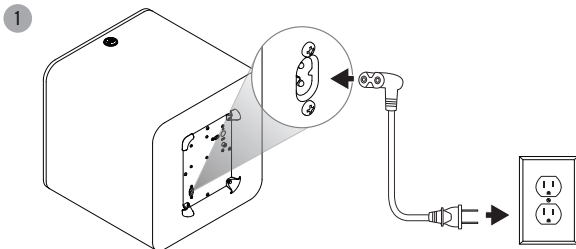


Power Cord

Subwoofer Caisson de graves Subwoofer Subwoofer Subwoofer Subwoofer 低音炮 サブウーファー	Power Cord Cordon d'alimentation Cordón de alimentación Gleichstromkabel Cavo di alimentazione Cabo de alimentação 直流电源线 電源コード	Flexus Transmitter Cordon d'alimentation Cordón de alimentación Gleichstromkabel Cavo di alimentazione Cabo de alimentação 直流电源线 電源コード
---	--	--

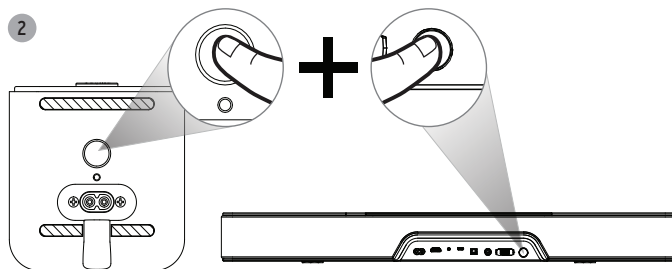
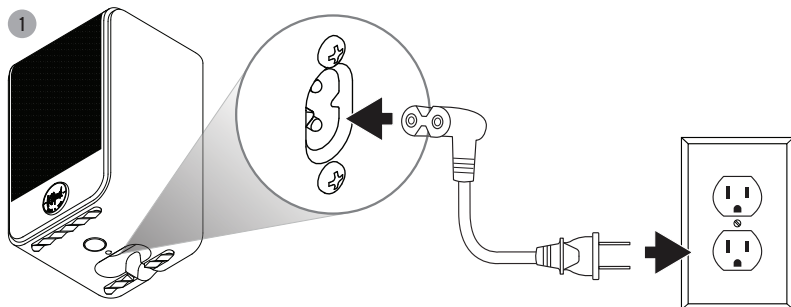
SYSTEM SETUP

CONTENU • CONTENIDO • INHALT • CONTENUTO • CONTEÚDO • 内 • 内部



ADDITIONAL PERIPHERALS

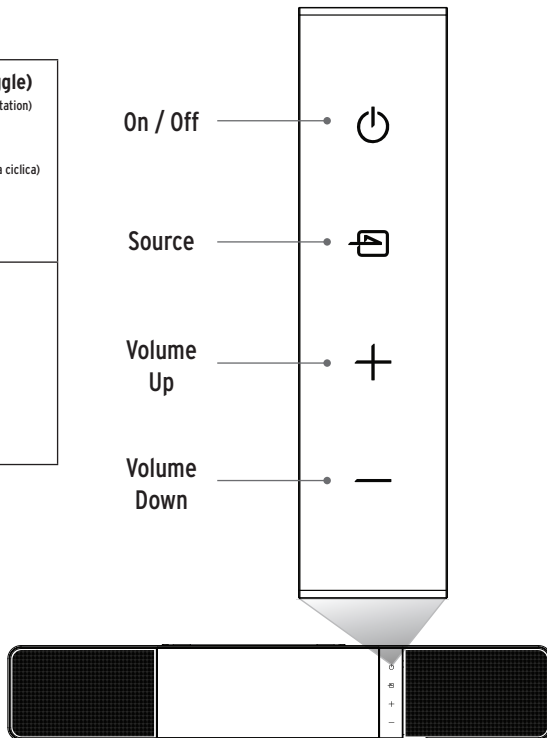
CONTENU • CONTENIDO • INHALT • CONTENUTO • CONTEÚDO • 内 • 内部



SOUND BAR CONTROLS

BARRE DE SON • BARRA DE SONIDO • SOUND BAR • SOUND BAR • BARRA SONORA • 条形音箱 • サウンドバーコントロール

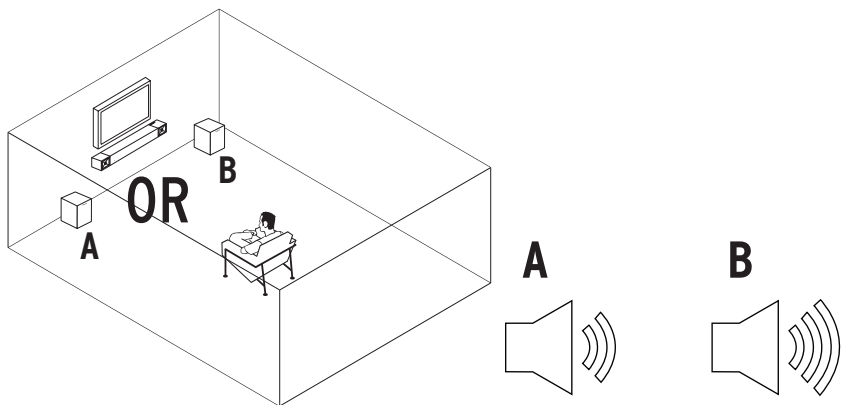
On / Off Sous tensio / Hors tension Encendido / Apagado Ein / Aus Acceso / Spento Ligar / Desligar 开/关 オン/オフ	Source Select (Toggle) Sélection de la source (commutation) Selección de fuente (cíclica) Quellenwahl (Umschalten) Selezione segnale (in sequenza ciclica) Seleção da fonte (Alternar) 电源选择 (切换) ソース選択(トグル)
Volume Down Volume bas Bajada de volumen Leiser Riduzione volume Diminuir o volume 音量减小 音量ダウン	Volume Up Volume haut Subida de volumen Lauter Aumento volume Aumentar o volume 音量増大 音量アップ



SUBWOOFER PLACEMENT

POSITIONNEMENT DU CAISSON DE GRAVES • UBICACIÓN DEL SUBWOOFER • SUBWOOFER-PLATZIERUNG • COLLOCAZIONE DEL SUBWOOFER

POSIÇÃO DO SUBWOOFER • 低音炮布置 • サブウーファアの配置



Corner placement will increase the amount of bass output, while placing the subwoofer along the middle of a wall, or out in the room will decrease the amount of bass output.

Une position en coin augmentera le volume des graves, tandis qu'une position au milieu d'un mur, ou au milieu de la pièce, réduira le volume des graves.

Poner el subwoofer en una esquina aumenta el rendimiento de bajos; ponerlo al centro de la pared o fuera de la sala lo disminuye.

Platzierung in einer Ecke steigert die Bassleistung, während eine Platzierung an der Mitte einer Wand oder von den Wänden entfernt die Bassleistung verringert.

Collocandolo in un angolo si aumenta il livello dell'uscita ai bassi, mentre se lo si colloca presso il centro di una parete o lontano dalle pareti si diminuisce tale livello.

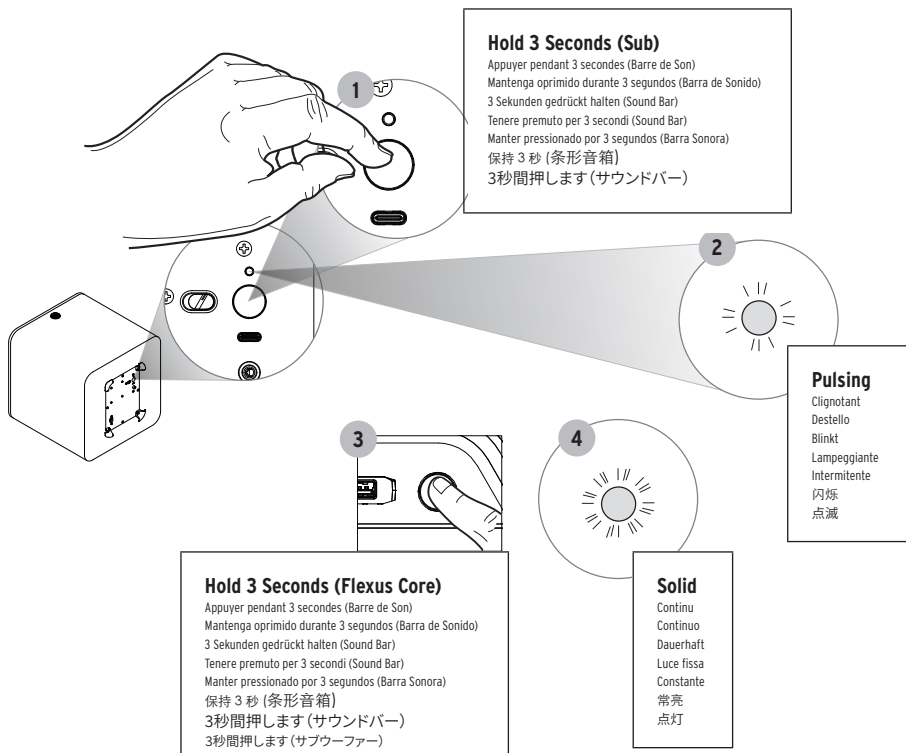
Se a unidade for colocada em um canto ela aumentará a reprodução de graves. Se for colocada no meio de uma parede, ou em um espaço aberto no ambiente, a reprodução de graves diminuirá.

上述建议把低音炮放置在角落位置，则其低音输出量会增加。

コーナーに配置すると低音の出力量が増加し、サブウーファアを壁の中央や、壁から離して配置すると低音の出力量が減少します。

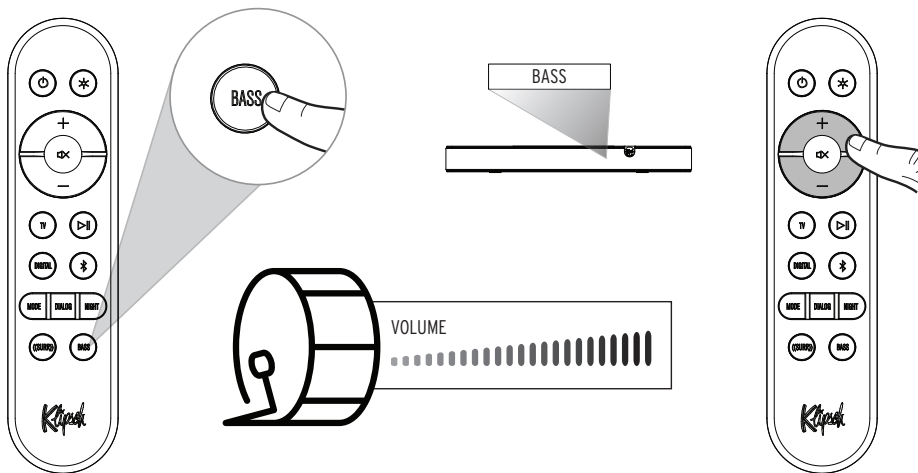
SUBWOOFER RECONNECT

RECONNECTER • RECONECTAR • ERNEUT VERBINDEN • RICONNESSIONE • RECONECTAR • 重新连接 • サブウーファアの再接続

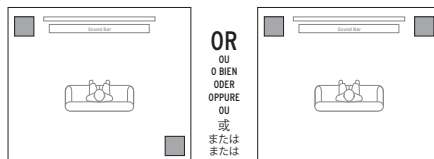


ADJUSTING BASS LEVEL

AJUSTEMENT DU NIVEAU DU CAISSON DE GRAVES • AJUSTE DEL VOLUMEN DEL SUBWOOFER • SUBWOOFER-LAUTSTÄRKE EINSTELLEN • REGOLAZIONE DEL LIVELLO DEL SUBWOOFER • AJUSTE DO NÍVEL DO SUBWOOFER • 調整低音炮水平 • サブウーファーレベルの調整

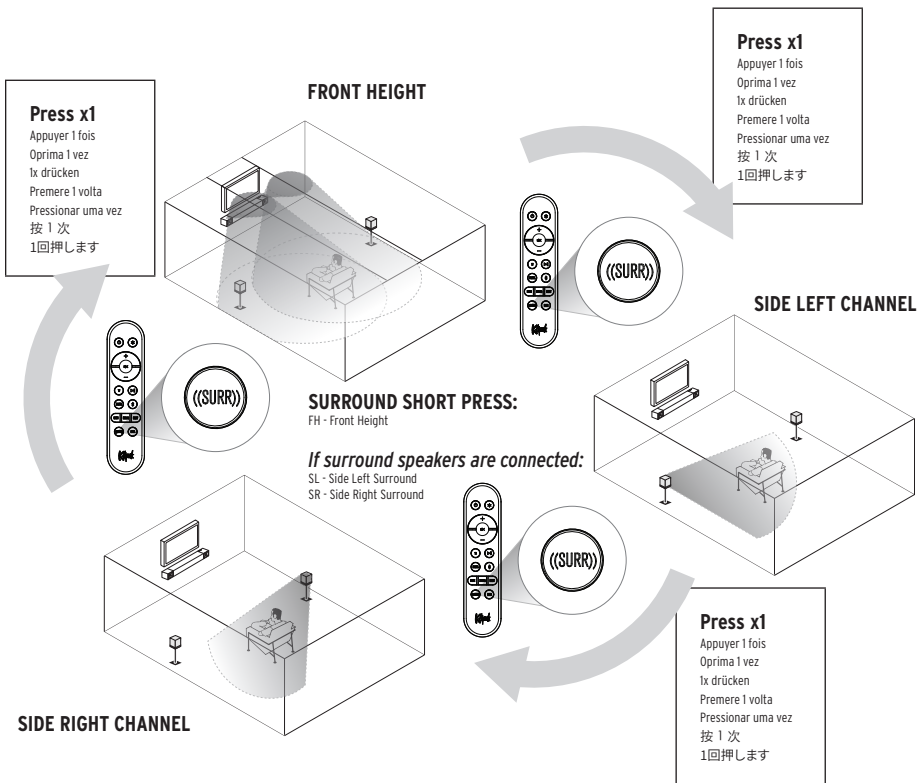


RECOMMENDED PLACEMENT FOR DUAL SUBWOOFERS:



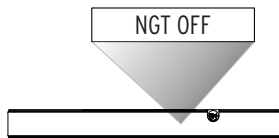
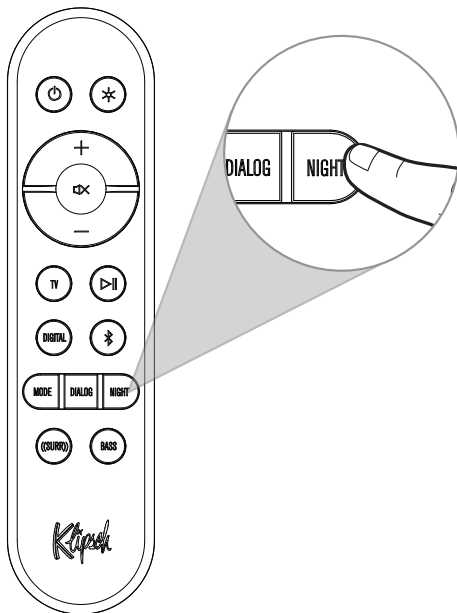
SURROUND LEVEL ADJUSTMENT

NIVEAU DU SURROUND - AJUSTEMENT RAPIDE • VOLUMEN DE SURROUND - AJUSTE RÁPIDO • SURROUND-LAUTSTÄRKE - SCHNELLEINSTELLUNG • REGOLAZIONE RAPIDA DEL LIVELLO DEL SUBWOOFER • NÍVEL SURROUND - AJUSTE RÁPIDO • 环绕声水平 - 快速调整 • サラウンドレベル - クイック調整



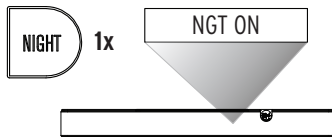
NIGHT MODE

MODE NUIT • MODALIDAD NOCTURNA • NACHTMODUS • MODALITÀ ORE NOTTURNE • MODO NOTURNO • 夜間模式 • ナイトモード



NIGHT DISABLED

Full dynamic range with full bass

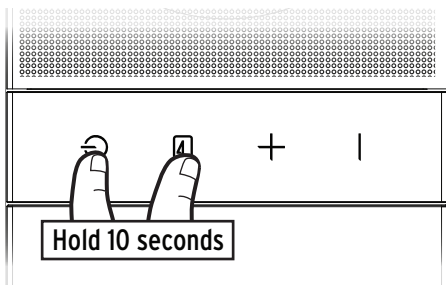


NIGHT ENABLED

Reduced dynamic range with compressed bass
for low volume listening

FACTORY RESET

RÉINITIALISATION • RESTABLECIMIENTO DE FÁBRICA • RÜCKSETZUNG AUF WERKSEINSTELLUNG • RIPRISTINO IMPOSTAZIONI DI FABBRICA
RESTABELECIMENTO DAS CONFIGURAÇÕES DE FÁBRICA • 恢复出厂设置



Hold 10 Seconds

Appuyer pendant 10 secondes
Mantenga oprimido durante 10 segundos
10 Sekunden gedrückt halten
Tenere premuto per 10 secondi
Manter pressionado por 10 segundos
保持 10 秒

Clears *Bluetooth®* pairing history and user programmed IR commands

Efface l'historique d'appariement *Bluetooth®* et les commandes IR programmées par l'utilisateur

Borra el historial de sincronización de *Bluetooth®* y los comandos programados por el usuario

Löscht *Bluetooth®*-Kupplungsdaten und benutzerprogrammierte IR-Befehle

Vengono cancellati la cronologia delle associazioni *Bluetooth®* e i comandi programmati dall'utente sul telecomando a infrarossi

Limpa o histórico de pareamento *Bluetooth®* e os comandos de IR programados pelo usuário

清除蓝牙®配对历史记录及用户编程的 IR 指令。

LED DISPLAY

	DISPLAY	BAR STATUS
OTHER	PAIRING	Peripheral pairing
	PAIR FAILED	Subwoofer/surrounds failed to pair
	SUB PAIRED	Subwoofer paired



"The *Bluetooth*® word mark and logos are registered trademarks owned by the Bluetooth SIG, Inc. and any use of such marks by Klipsch Group, Inc. is under license. Other trademarks and trade names are those of their respective owners."



Dolby, Dolby Audio, Dolby Atmos, and the double-D symbol are trademarks of Dolby Laboratories Licensing Corporation. Manufactured under license from Dolby Laboratories. Confidential unpublished works. Copyright © 1992-2020 Dolby Laboratories. All rights reserved.



HDMI, High-Definition Multimedia Interface, and the HDMI logo are trademarks or registered trademarks of HDMI Licensing, Administrator in the United States and/or other countries.

Klipsch®

KEEPERS OF THE SOUND

3502 WOODVIEW TRACE, INDIANAPOLIS, IN, USA

KLIPSCH.COM

©2023, Klipsch Group, Inc. Klipsch Group, Inc. is a wholly-owned subsidiary of Voxx International Corporation. Klipsch and Keepers of the Sound are trademarks of Klipsch Group, Inc., registered in the United States and other countries. The *Bluetooth®* word mark is a registered trademark owned by Bluetooth SIG, Inc. and any use of such mark by Klipsch Group, Inc. is under license.

V00 - 23110