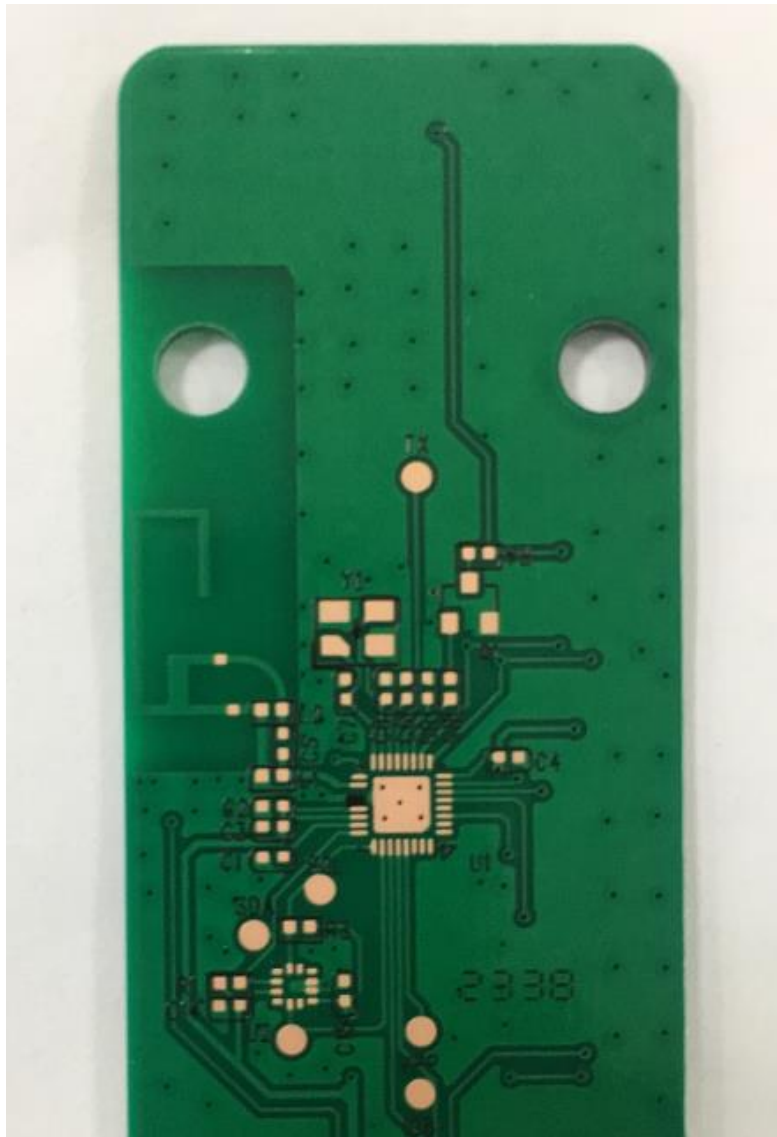


Antenna Specification

Electrical parameter	
频率范围 Frequency Range (MHz)	2400~2500
增益 Gain (dBi)	1.57
电压驻波比VSWR	≤ 2.0
输入阻抗Input Impedance (Ω)	50
极化方式Polarization	Vertical & Horizontal
最大功率 Maximum input power (W)	10
接头型号Input connector type	N/A



Performance test

Test equipment and environment



SATIMO-24

ETS

模拟人头手



安捷伦8960



安利MT8820C



CMW500



安捷伦E5071C

测试系统

测试环境

有源测试

无源测试

SATIMO—24

温度：22°C ± 3°C

支持2G/3G/4G

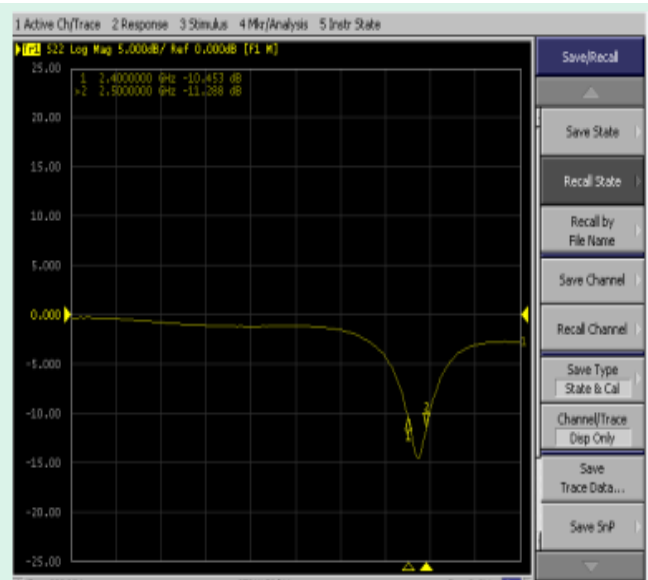
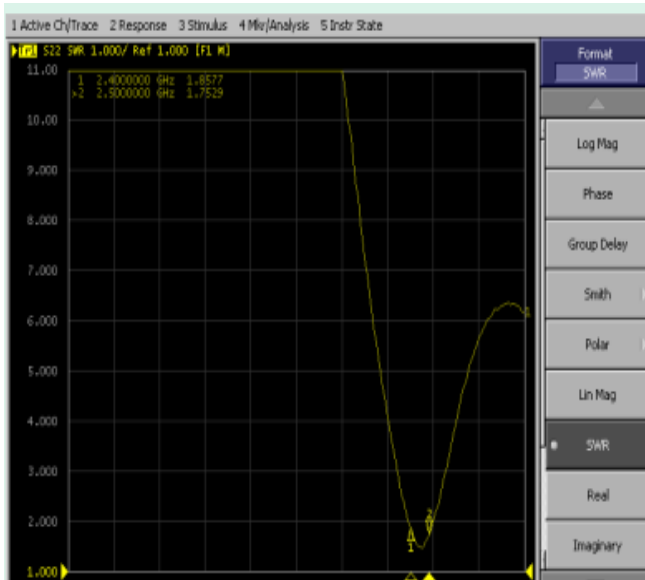
400MHZ—6G

ETS

湿度：50% ± 15%

BT/WIFI/GPS

Electrical performance test



Gain Table

Test Point ID	Freq. (MHz)	Gain (dBi)	Efficiency (%)
1	2400.0	1.57	51.1%
2	2410.0	1.34	50.8%
3	2420.0	1.37	51.1%
4	2430.0	1.31	50.9%
5	2440.0	1.29	49.8%
6	2450.0	1.29	48.9%
7	2460.0	1.19	48.0%
8	2470.0	1.23	48.2%
9	2480.0	1.16	47.1%
10	2490.0	1.22	45.4%
11	2500.0	1.05	43.5%

3D chart

