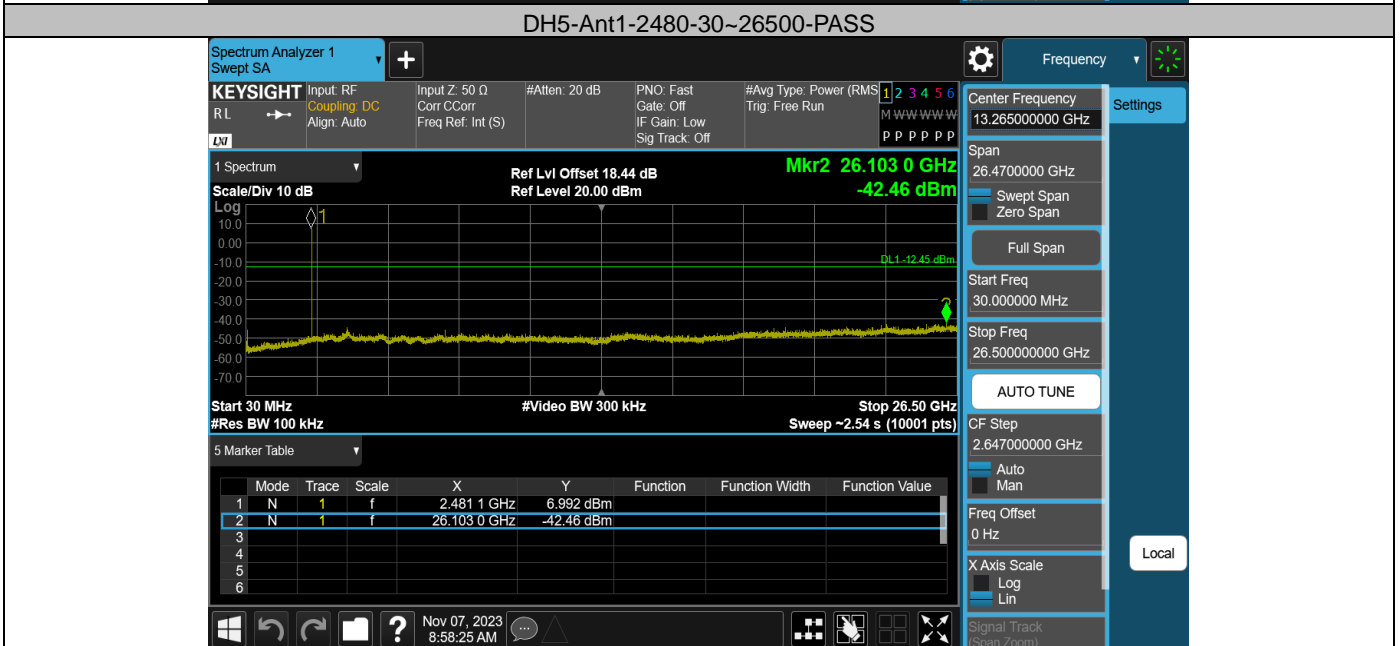
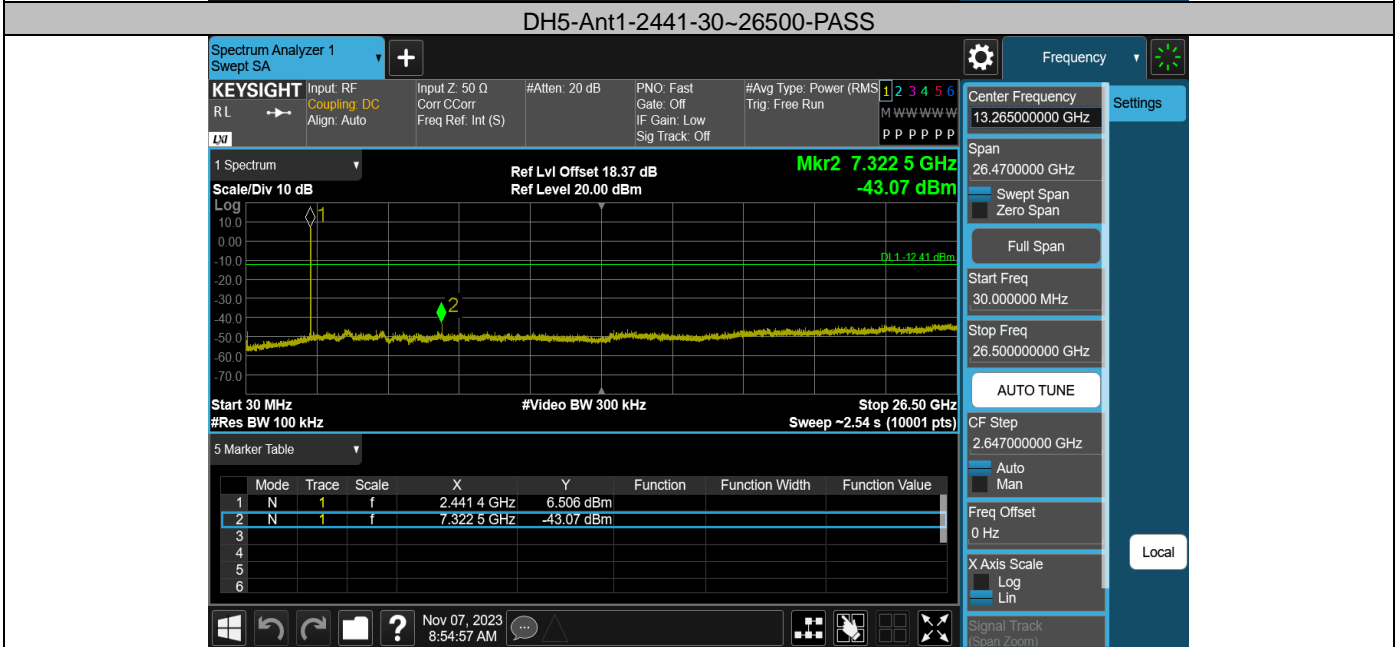
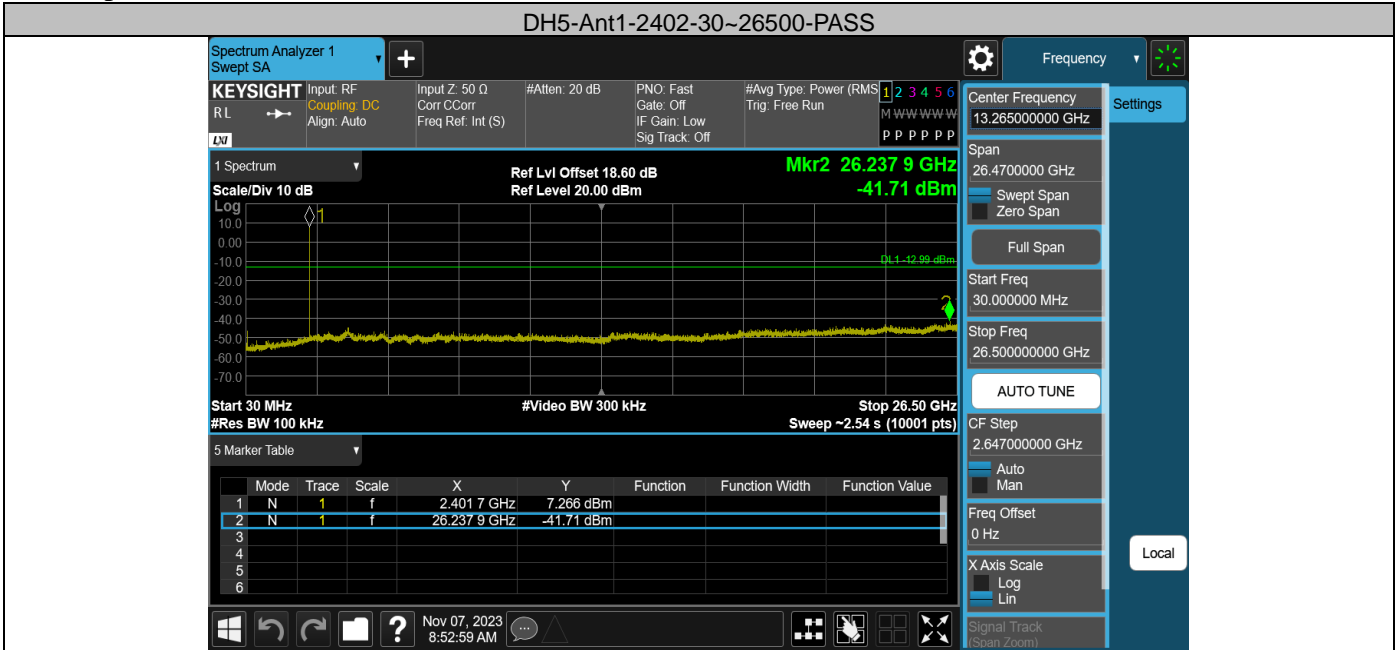
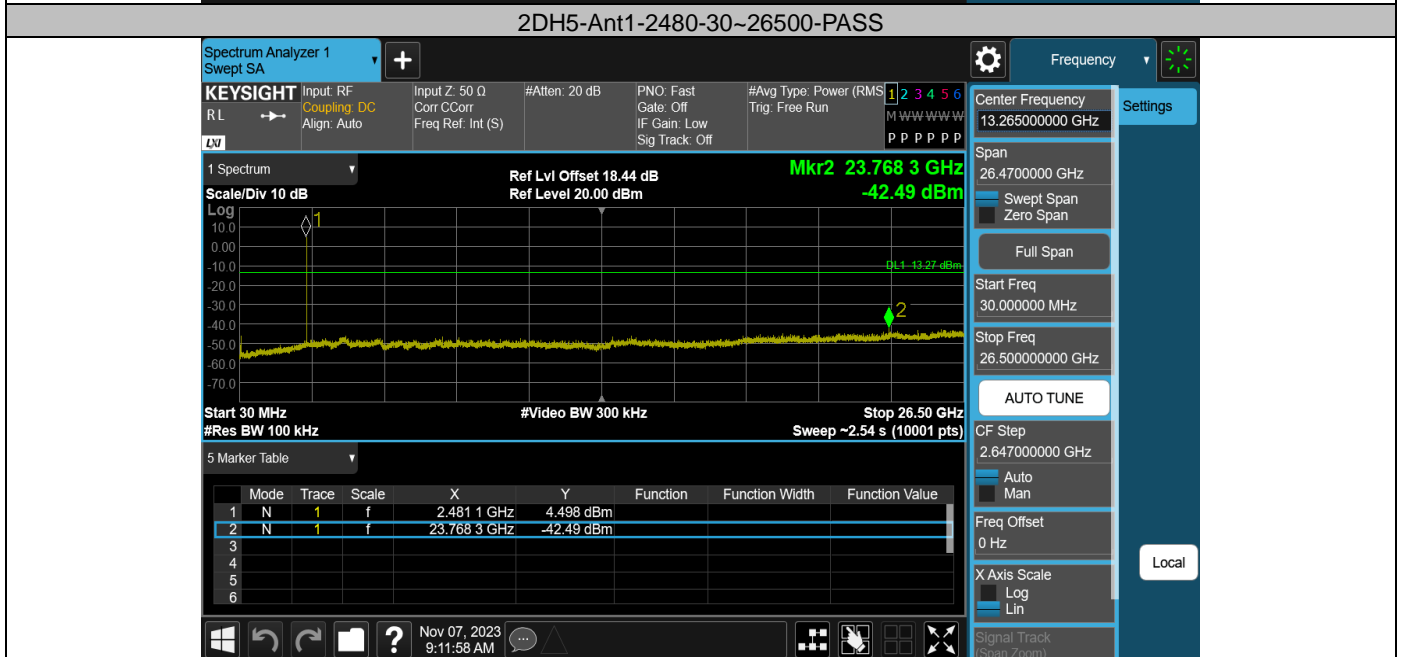
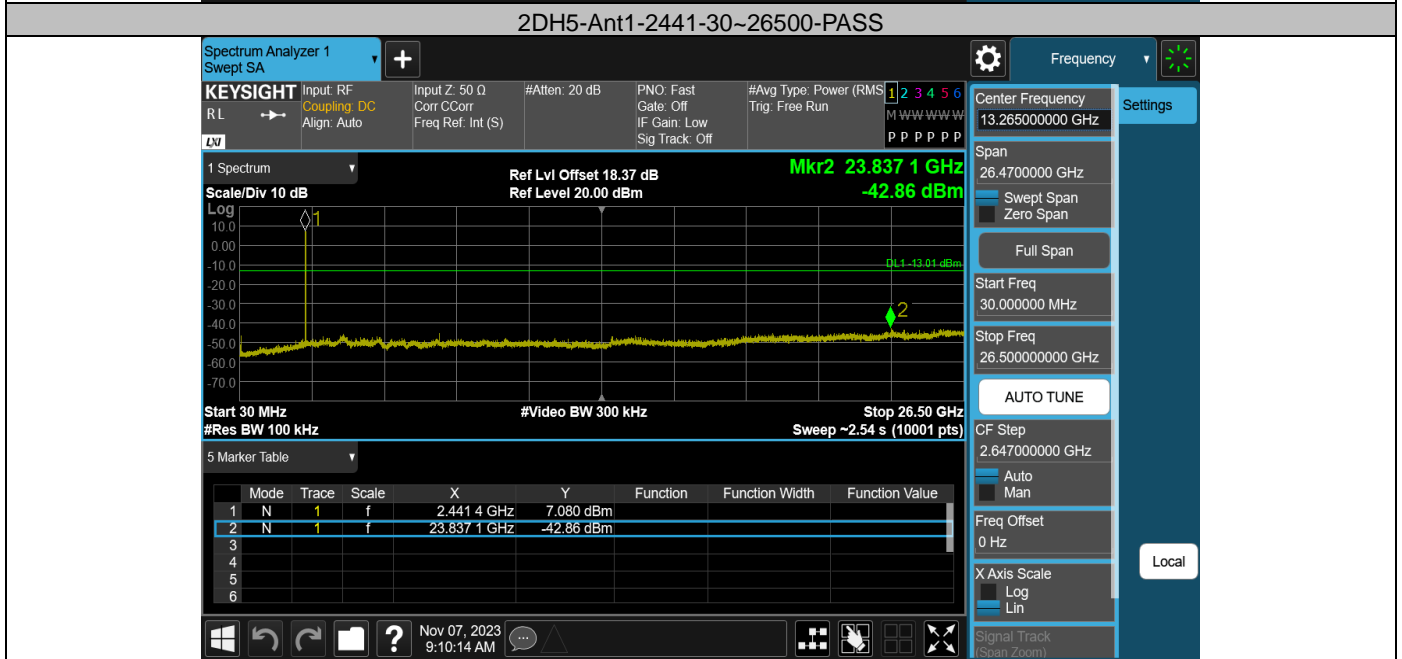
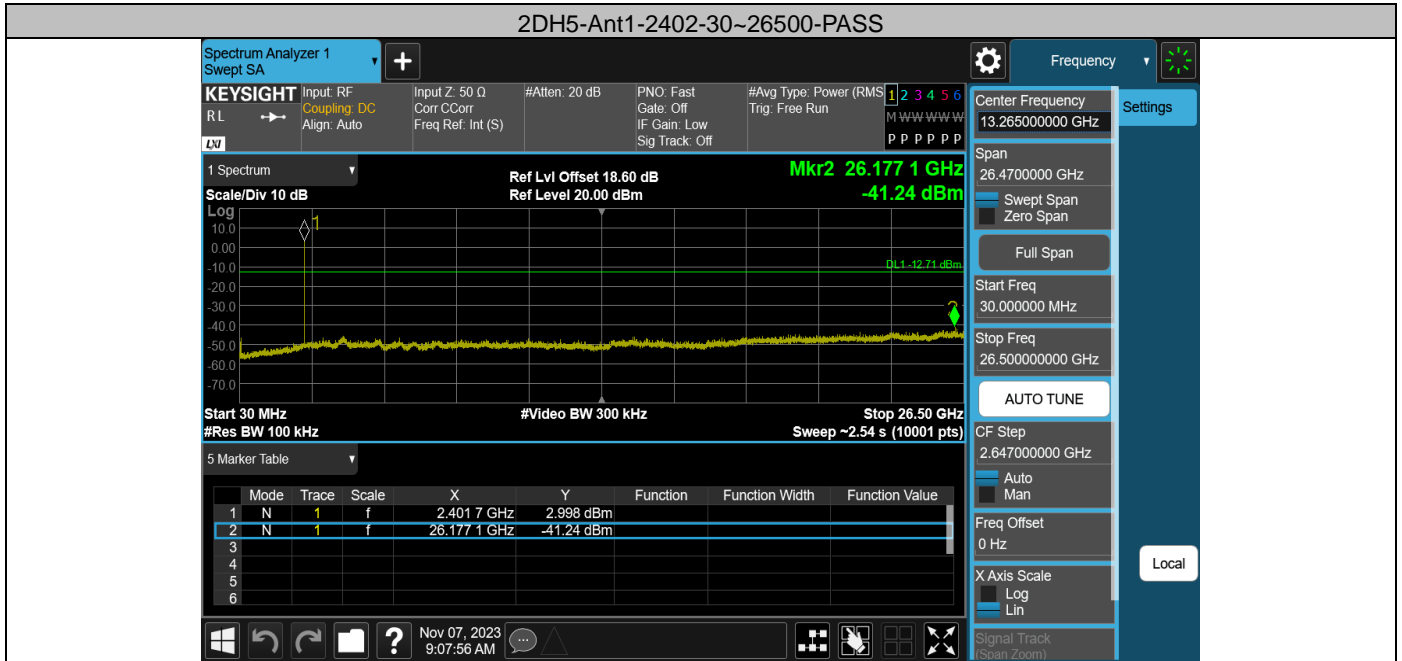


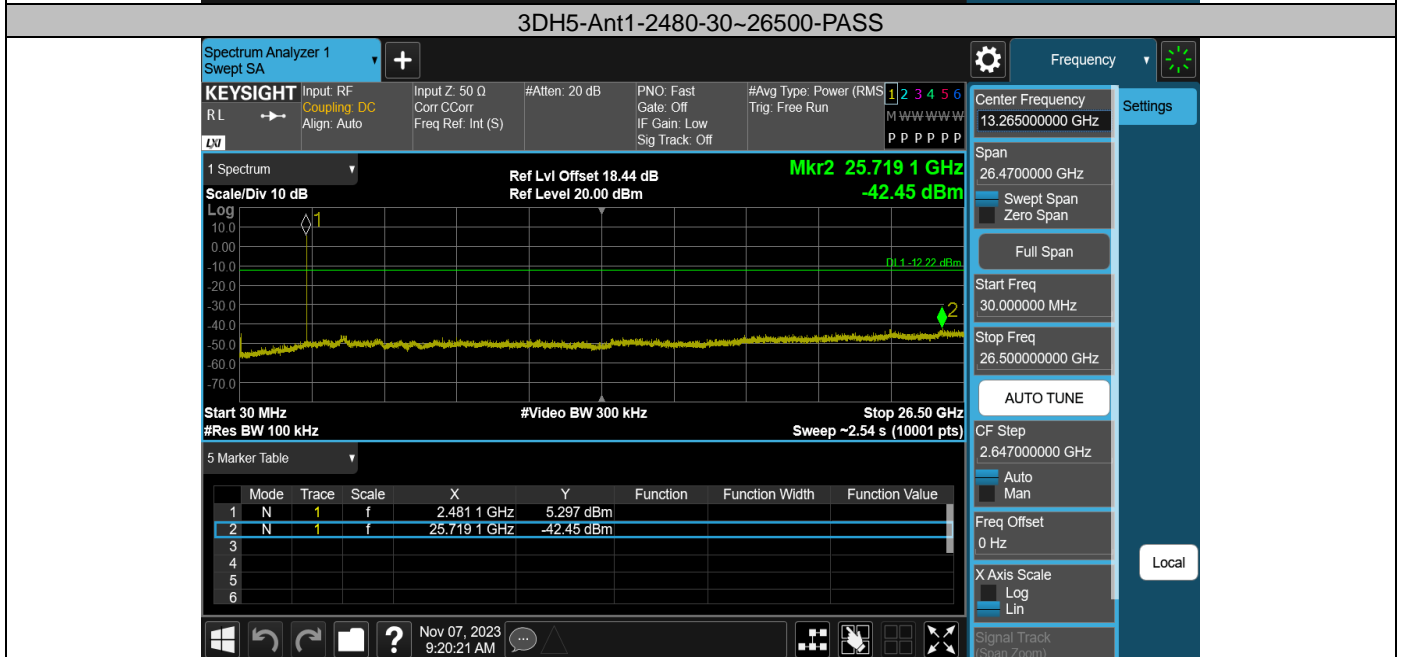
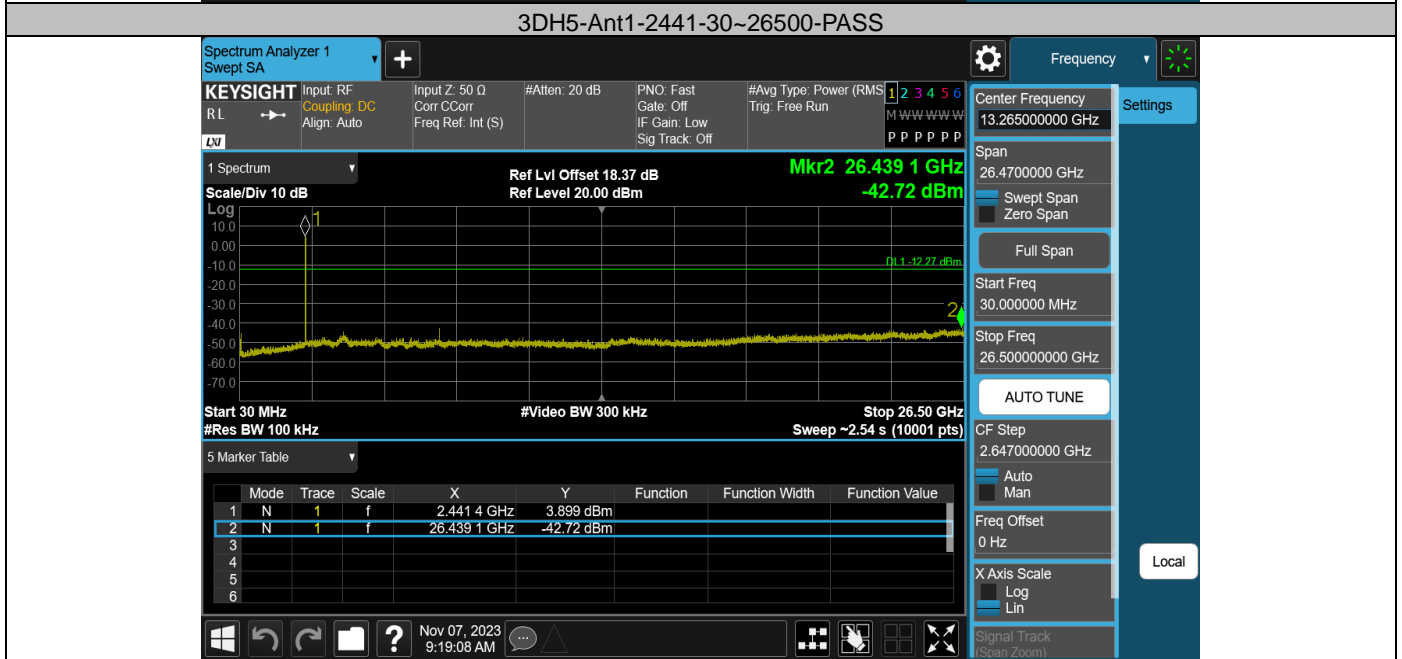
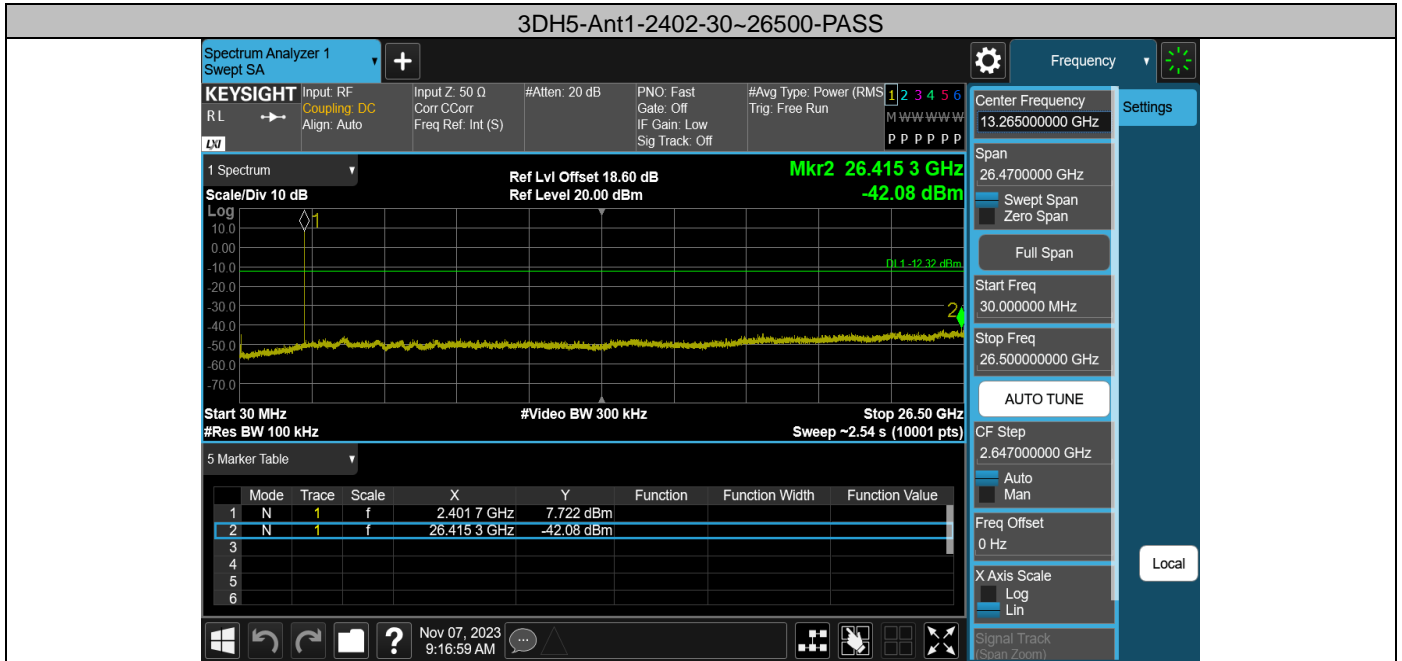
Appendix G: Conducted Spurious Emission  
Test Result

| TestMode | Antenna | Frequency[MHz] | FreqRange [MHz] | RefLevel [dBm] | Result [dBm] | Limit [dBm] | Verdict |
|----------|---------|----------------|-----------------|----------------|--------------|-------------|---------|
| DH5      | Ant1    | 2402           | 30~26500        | 7.01           | -41.71       | ≤-12.99     | PASS    |
| DH5      | Ant1    | 2441           | 30~26500        | 7.59           | -43.07       | ≤-12.41     | PASS    |
| DH5      | Ant1    | 2480           | 30~26500        | 7.55           | -42.46       | ≤-12.45     | PASS    |
| 2DH5     | Ant1    | 2402           | 30~26500        | 7.29           | -41.24       | ≤-12.71     | PASS    |
| 2DH5     | Ant1    | 2441           | 30~26500        | 6.99           | -42.86       | ≤-13.01     | PASS    |
| 2DH5     | Ant1    | 2480           | 30~26500        | 6.73           | -42.49       | ≤-13.27     | PASS    |
| 3DH5     | Ant1    | 2402           | 30~26500        | 7.68           | -42.08       | ≤-12.32     | PASS    |
| 3DH5     | Ant1    | 2441           | 30~26500        | 7.73           | -42.72       | ≤-12.27     | PASS    |
| 3DH5     | Ant1    | 2480           | 30~26500        | 7.78           | -42.45       | ≤-12.22     | PASS    |

Test Graphs





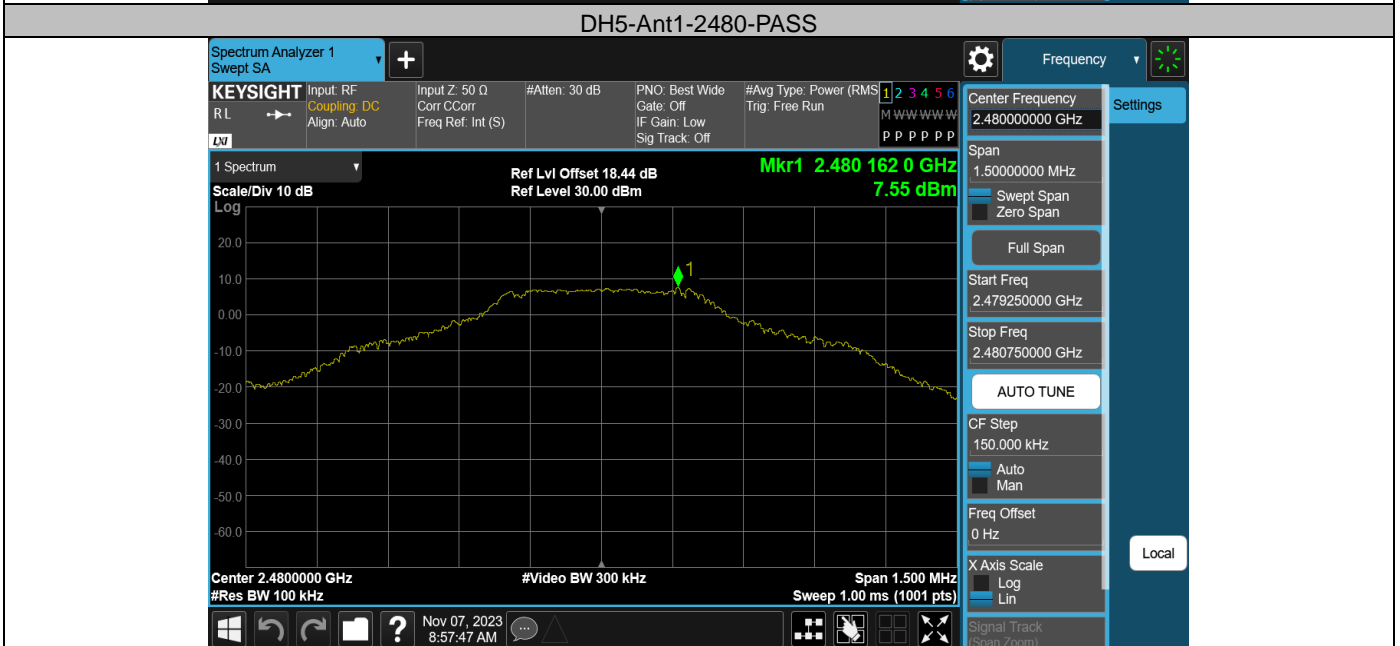
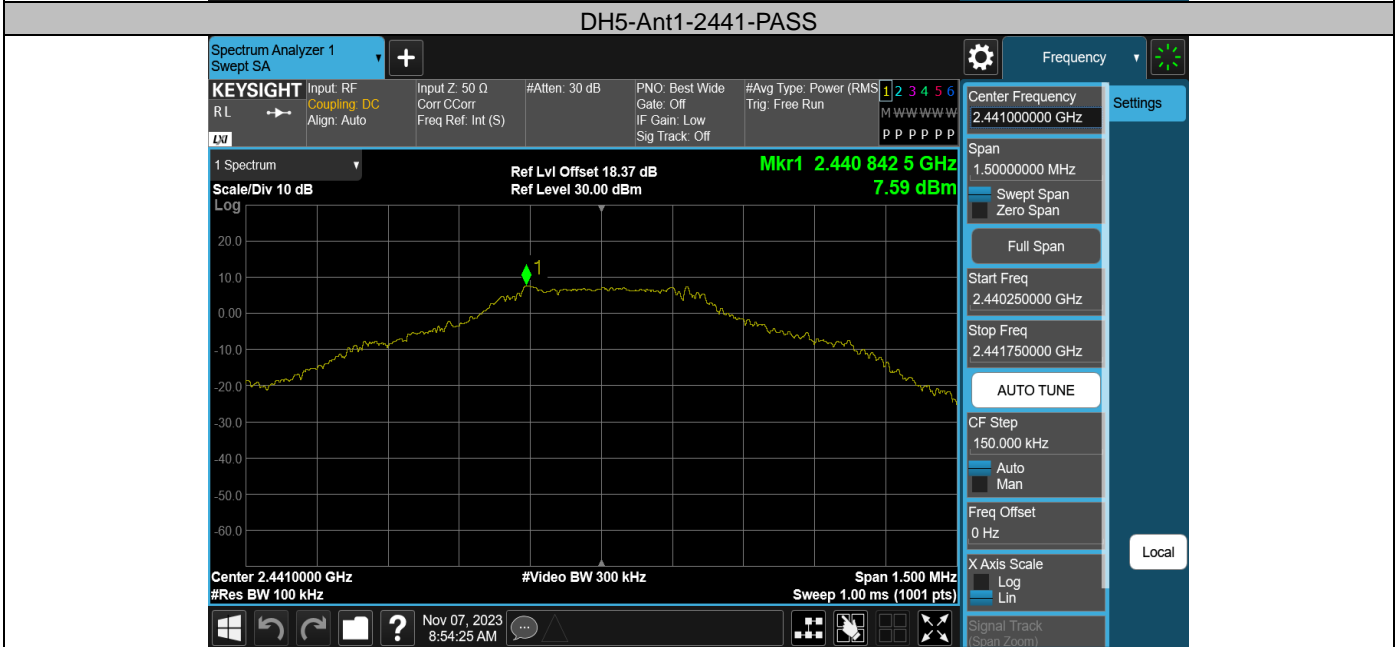
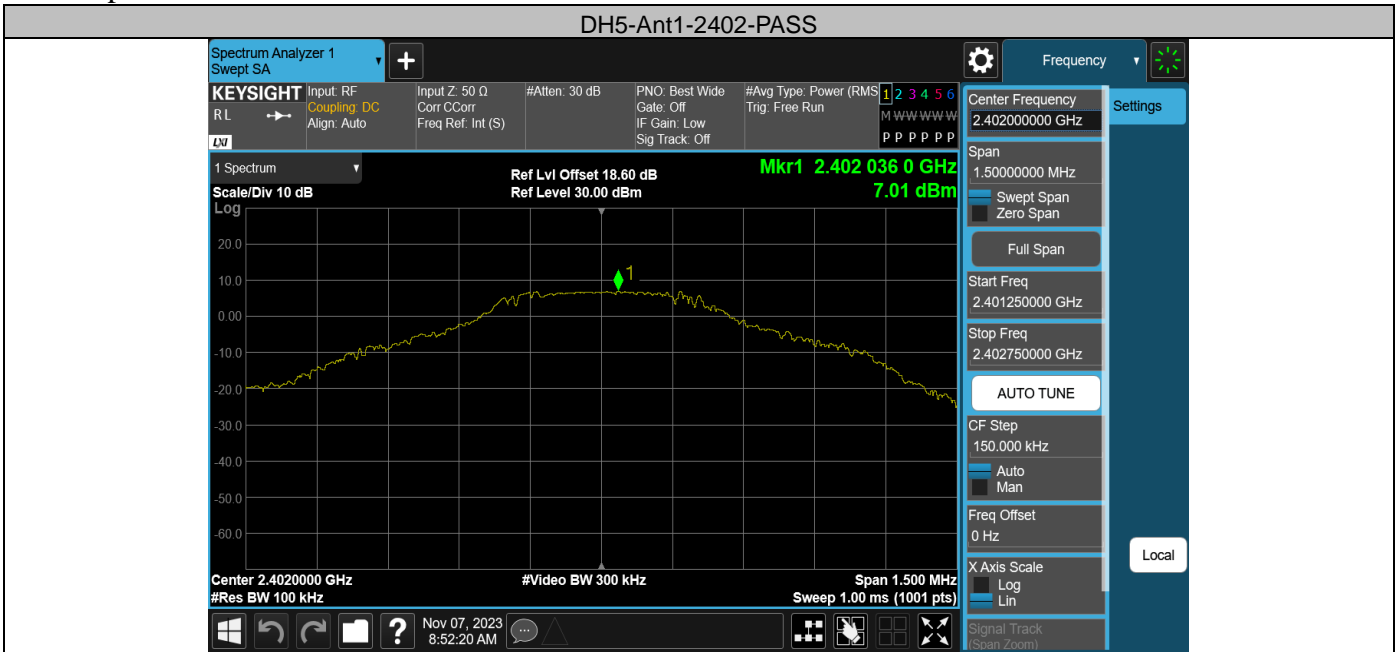


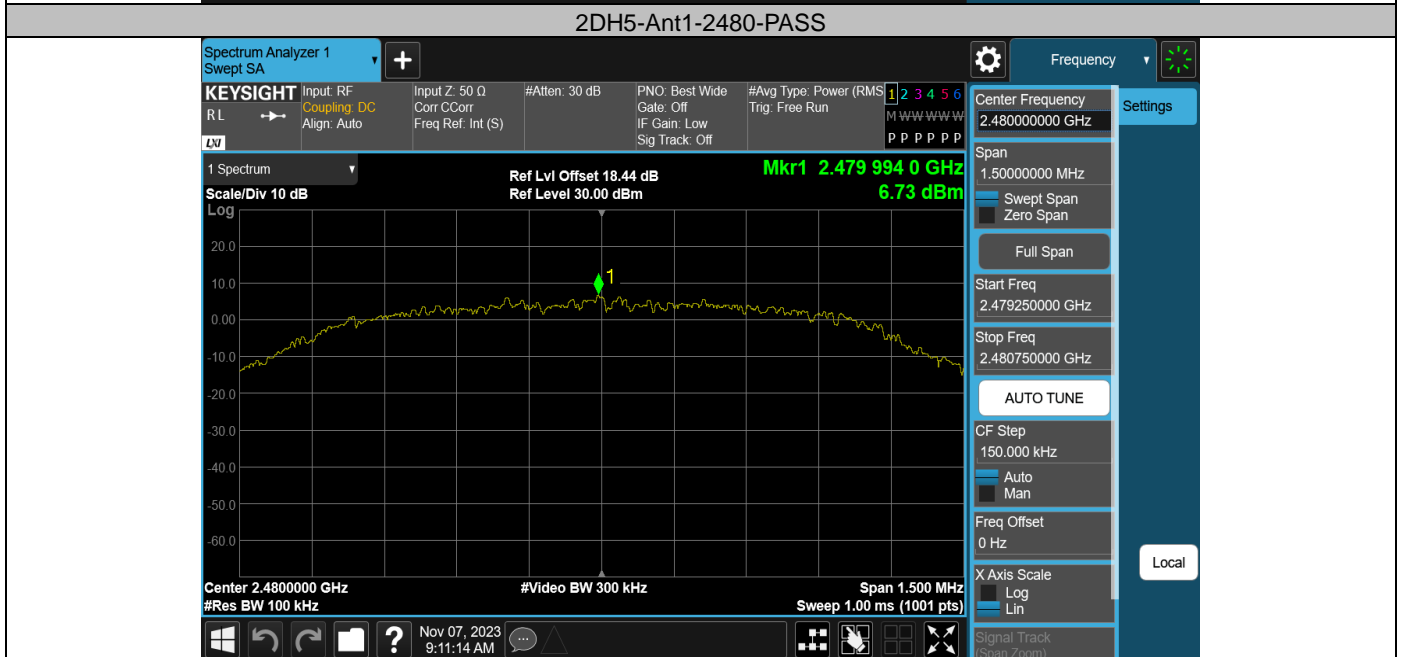
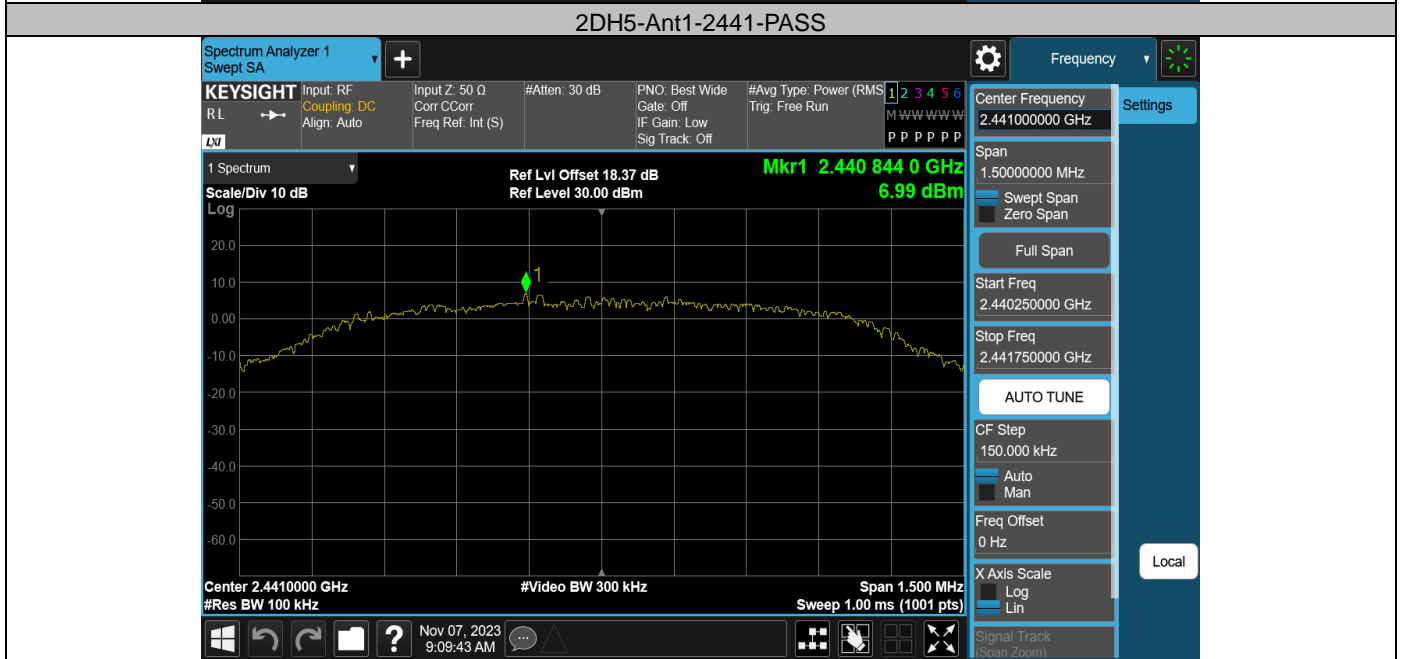
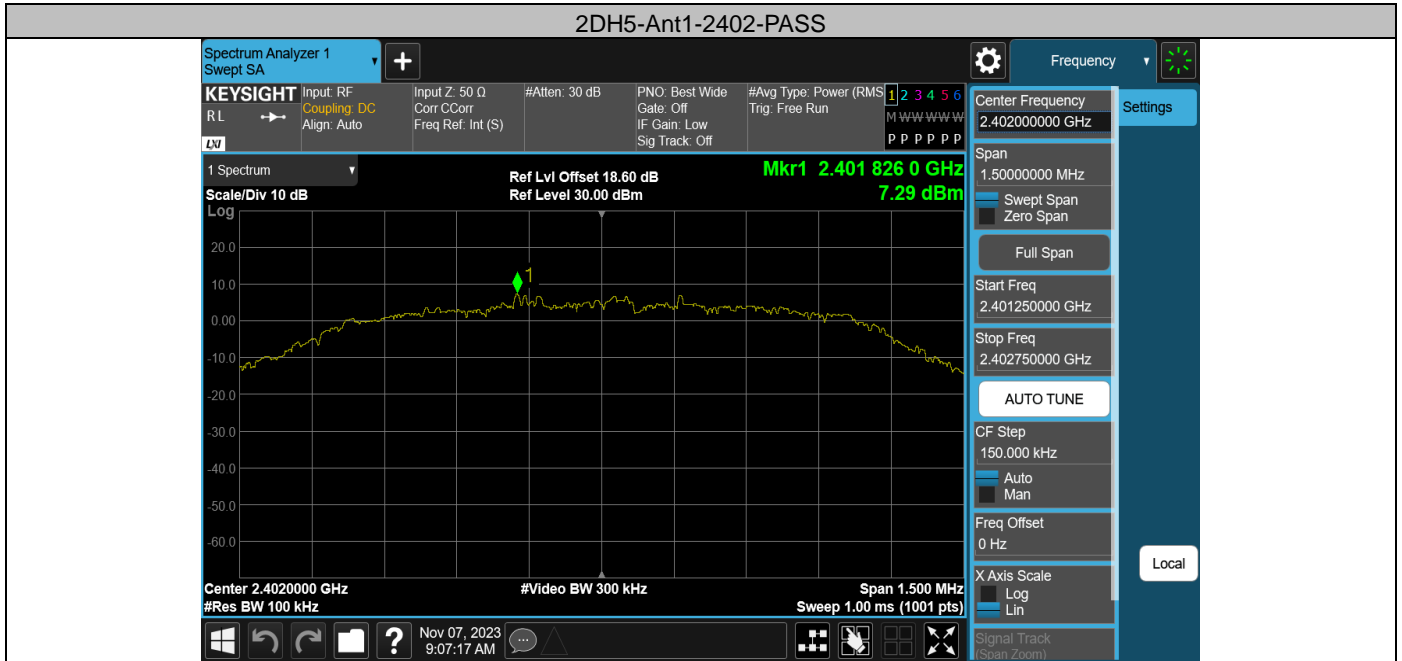
Appendix H: Reference level measurement  
 Test Result

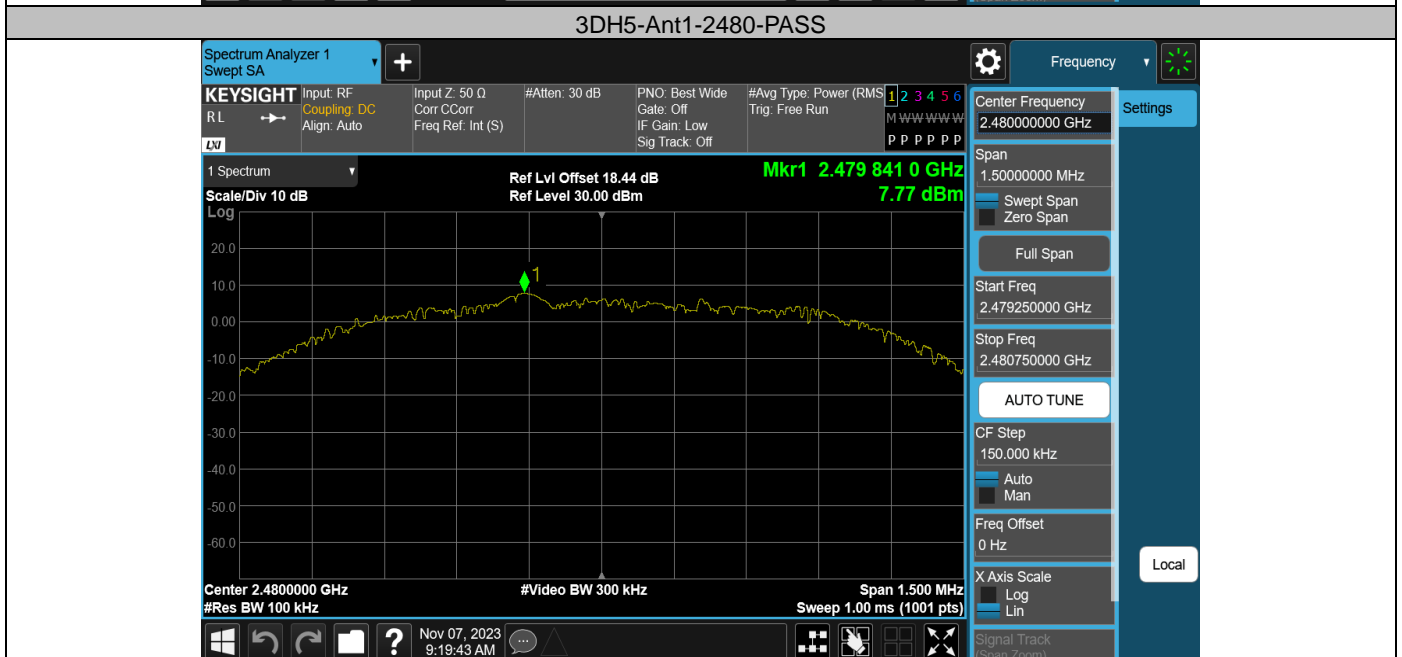
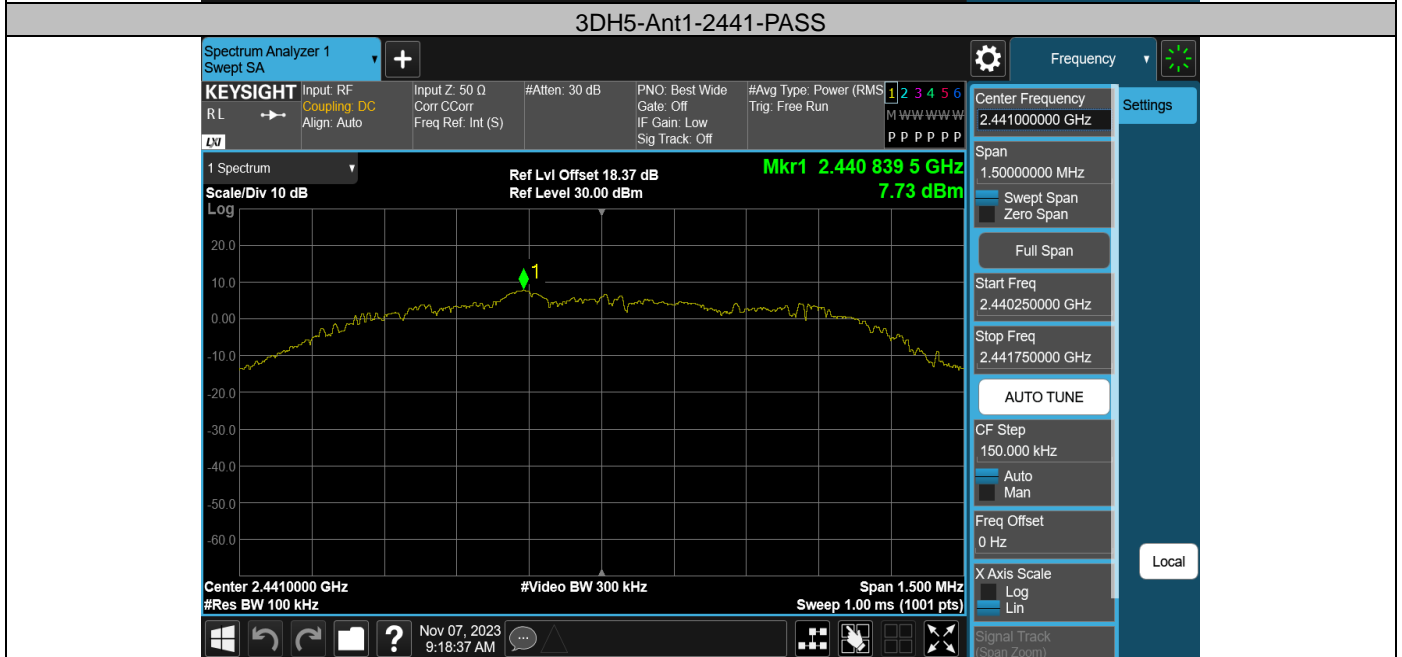
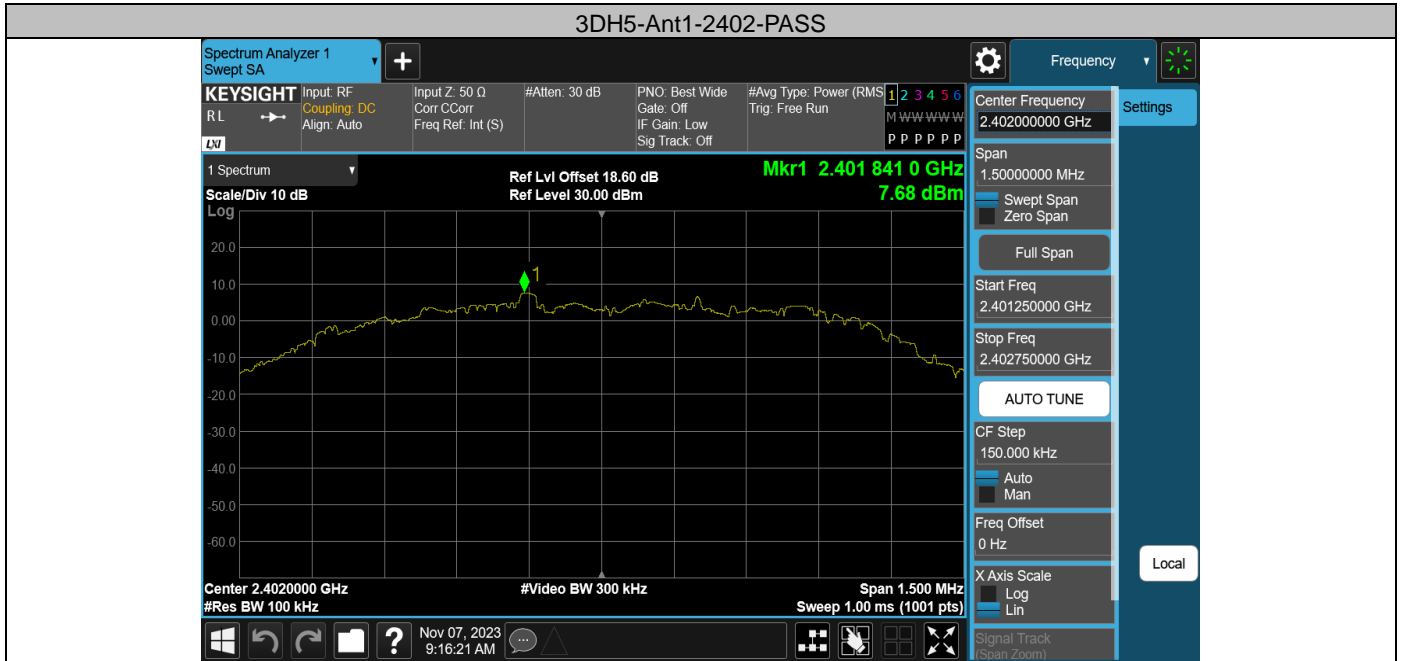
| TestMode | Antenna | Freq(MHz) | Max.Point[MHz] | Result[dBm] |
|----------|---------|-----------|----------------|-------------|
| DH5      | Ant1    | 2402      | 2402.04        | 7.01        |
| DH5      | Ant1    | 2441      | 2440.84        | 7.59        |
| DH5      | Ant1    | 2480      | 2480.16        | 7.55        |
| 2DH5     | Ant1    | 2402      | 2401.83        | 7.29        |
| 2DH5     | Ant1    | 2441      | 2440.84        | 6.99        |
| 2DH5     | Ant1    | 2480      | 2479.99        | 6.73        |
| 3DH5     | Ant1    | 2402      | 2401.84        | 7.68        |
| 3DH5     | Ant1    | 2441      | 2440.84        | 7.73        |
| 3DH5     | Ant1    | 2480      | 2479.84        | 7.77        |



Test Graphs







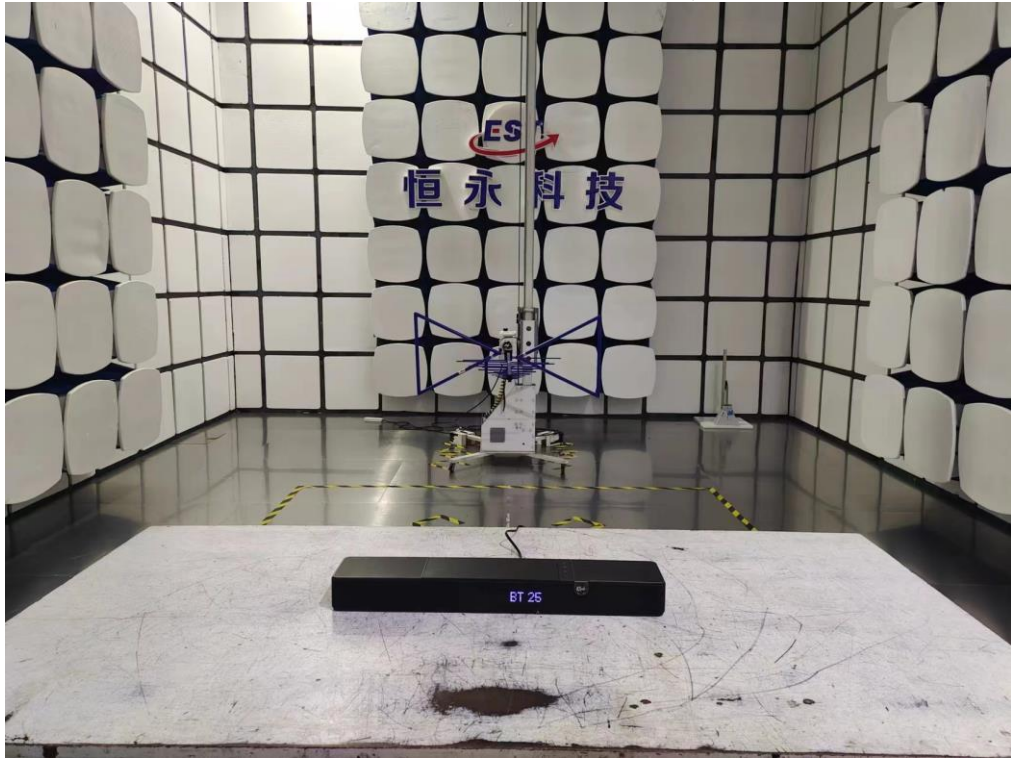
# 14. TEST SETUP PHOTO

Conducted Test





**Radiated Test (Below 1GHz)**

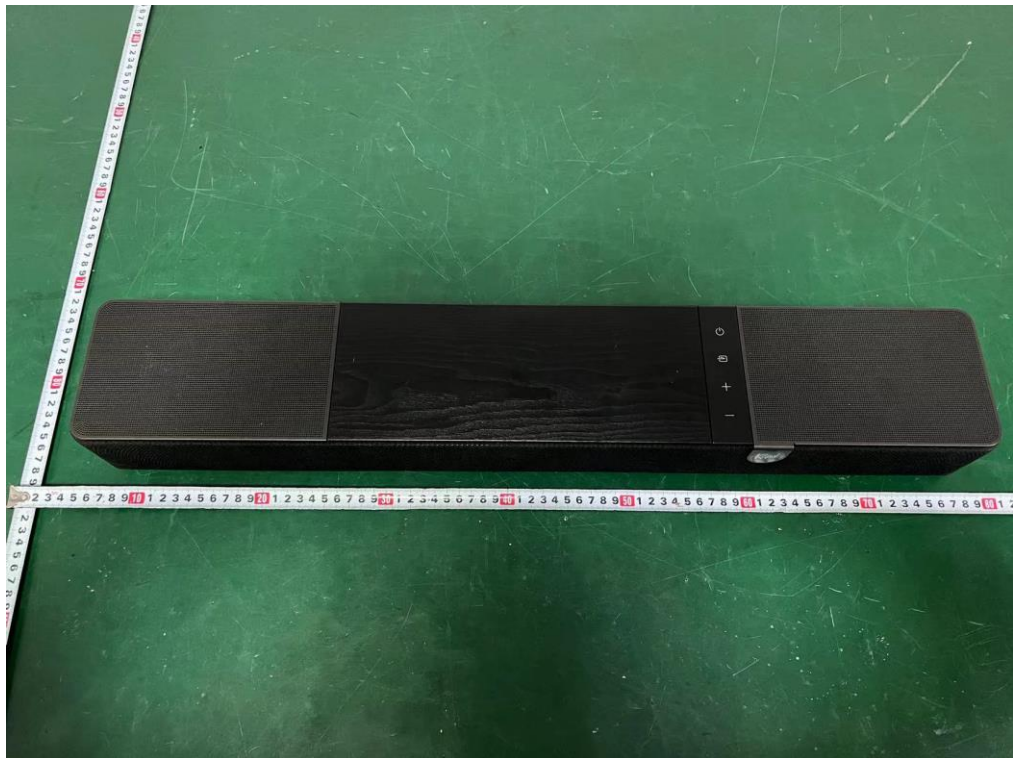


**Radiated Test (Above 1GHz)**



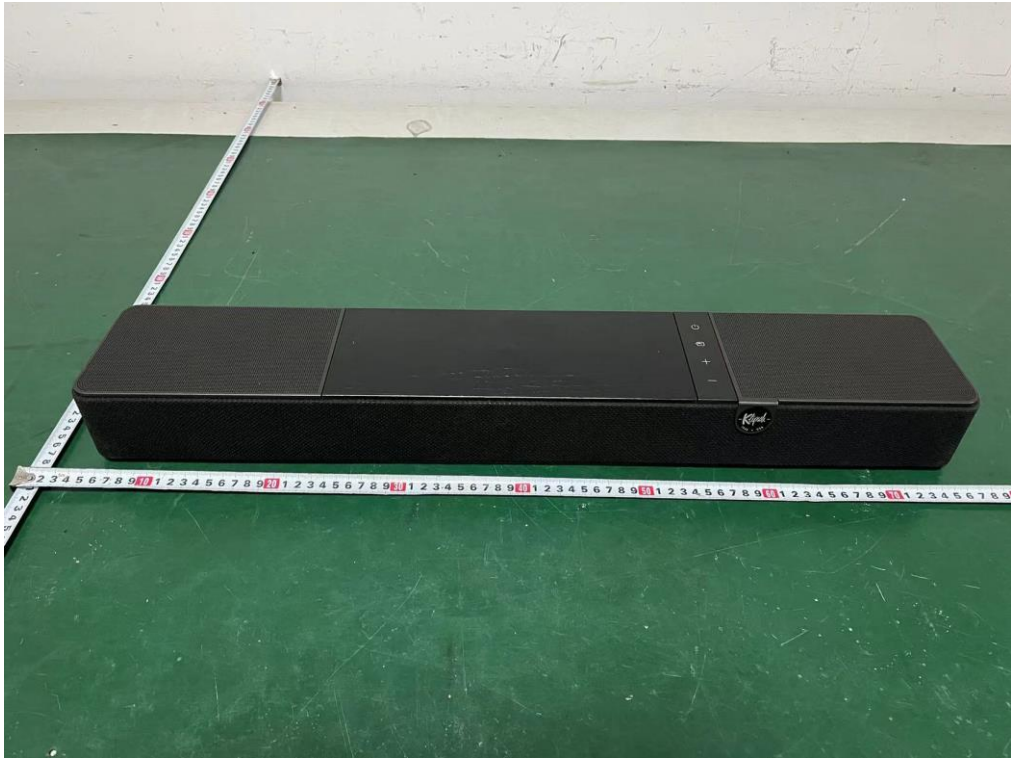
# 15. EUT PHOTO

**External Photos**  
M/N: Flexus CORE 100

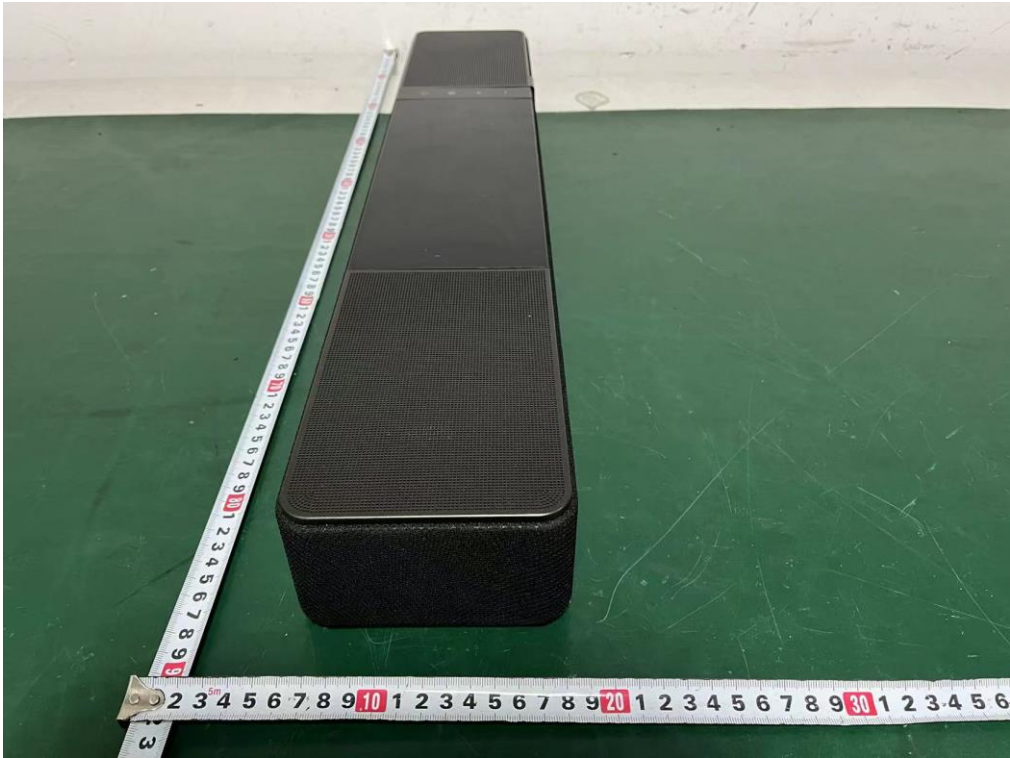
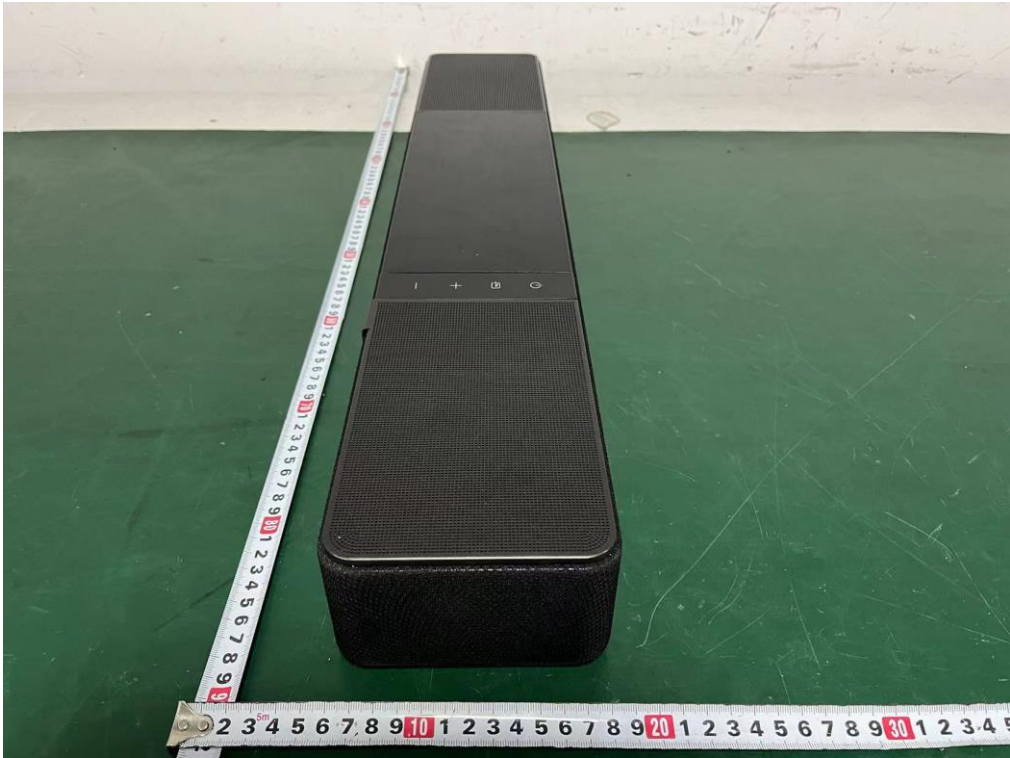




**External Photos**  
M/N: Flexus CORE 100



**External Photos**  
M/N: Flexus CORE 100

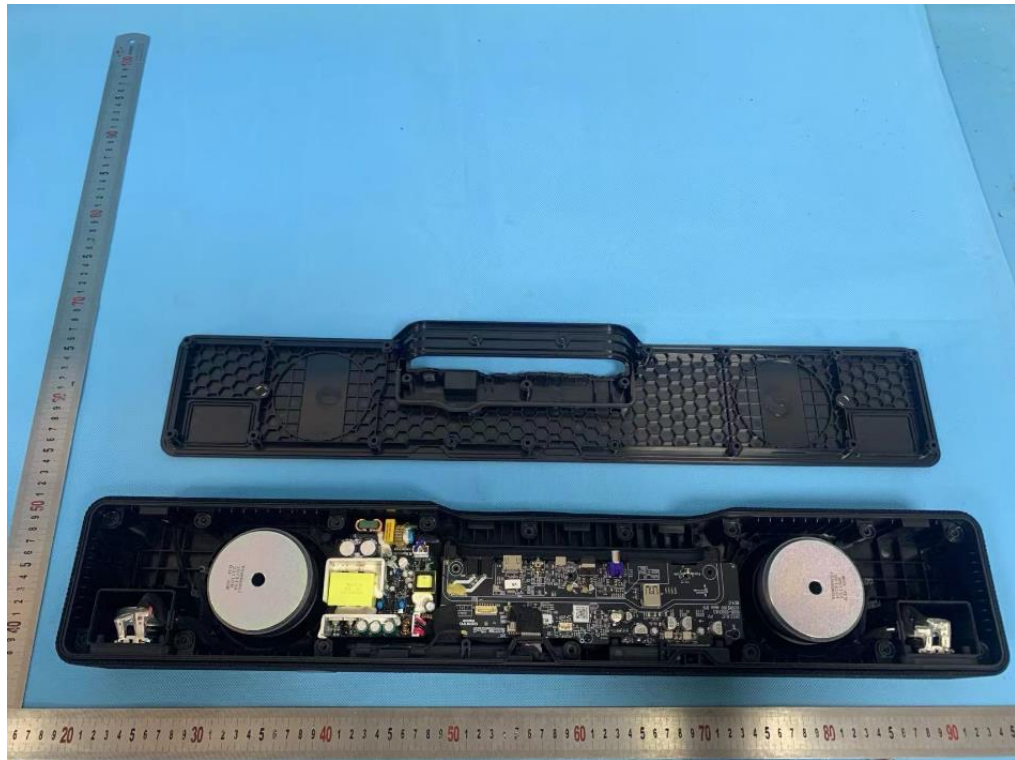




**External Photos**  
M/N: Flexus CORE 100

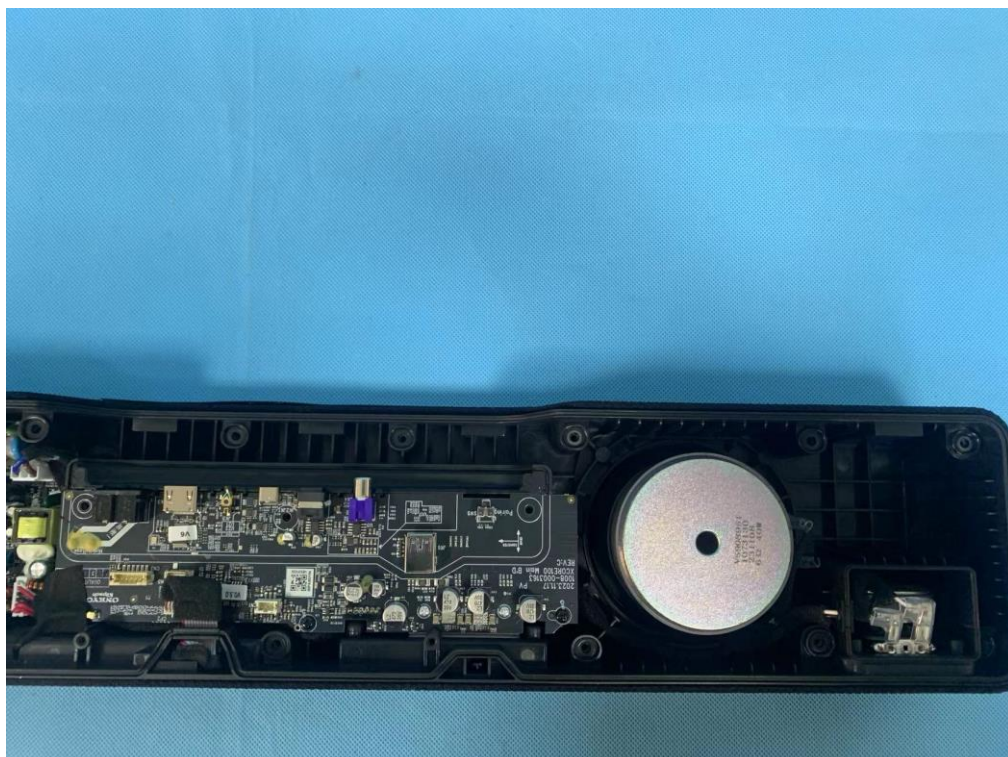
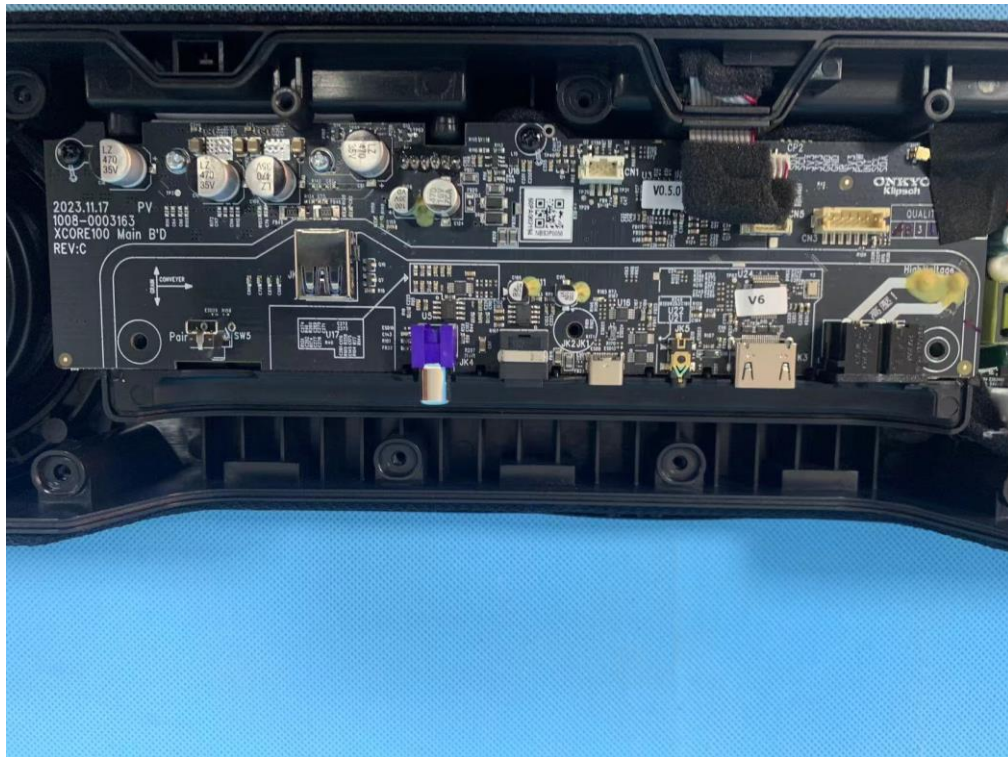


**Internal Photos**  
M/N: Flexus CORE 100

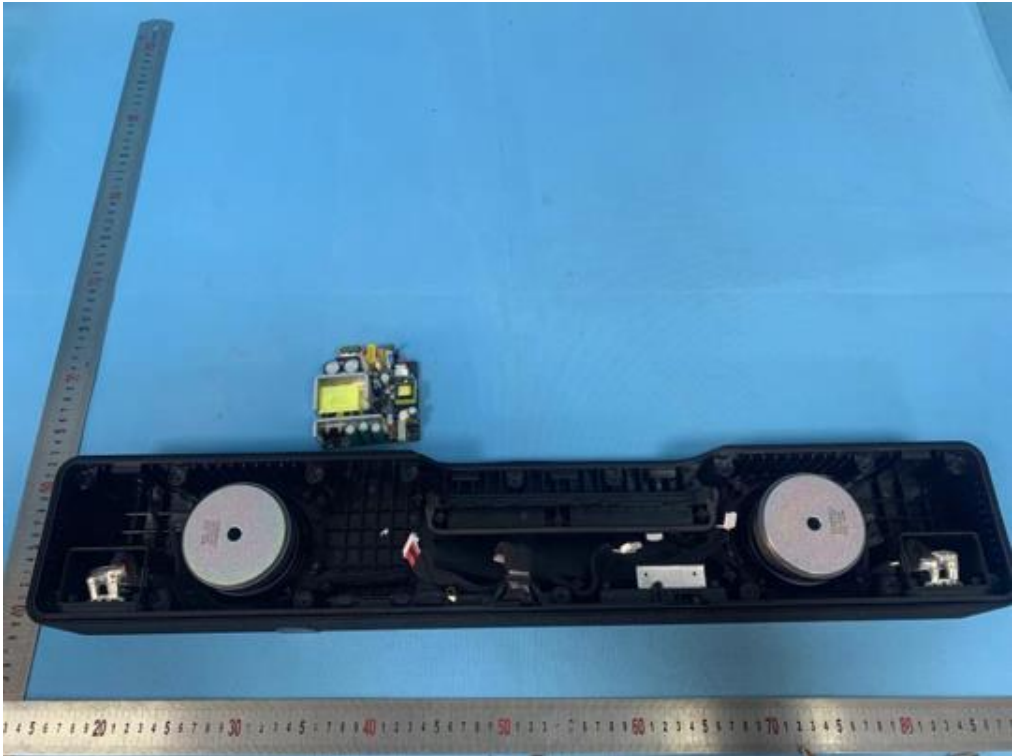
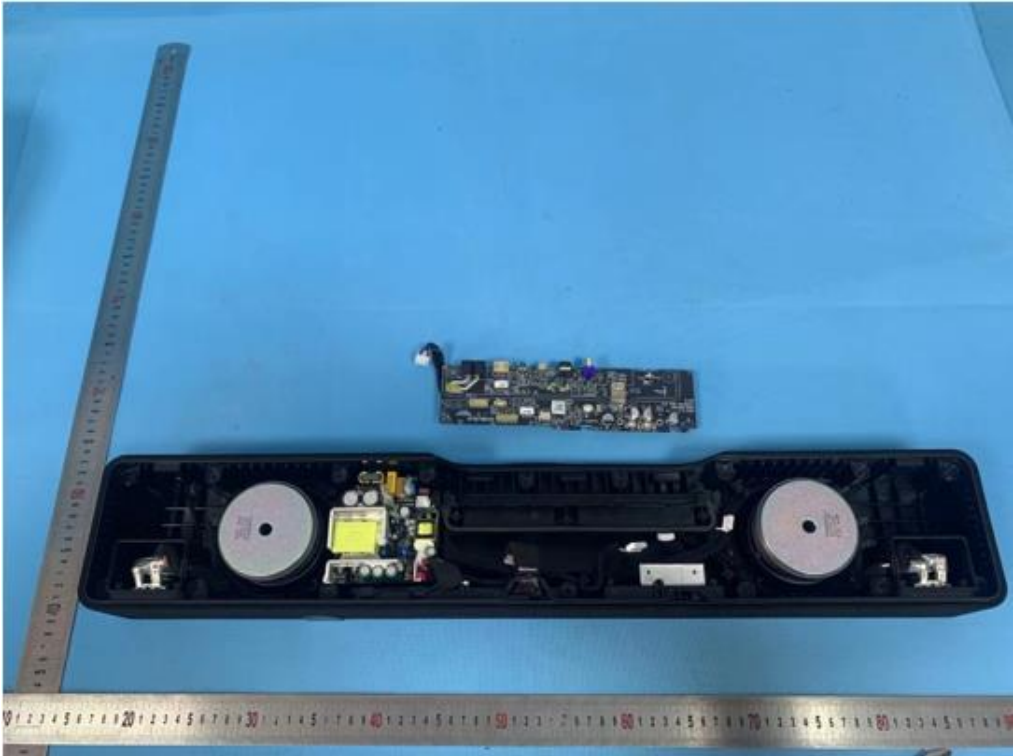




**Internal Photos**  
M/N: Flexus CORE 100

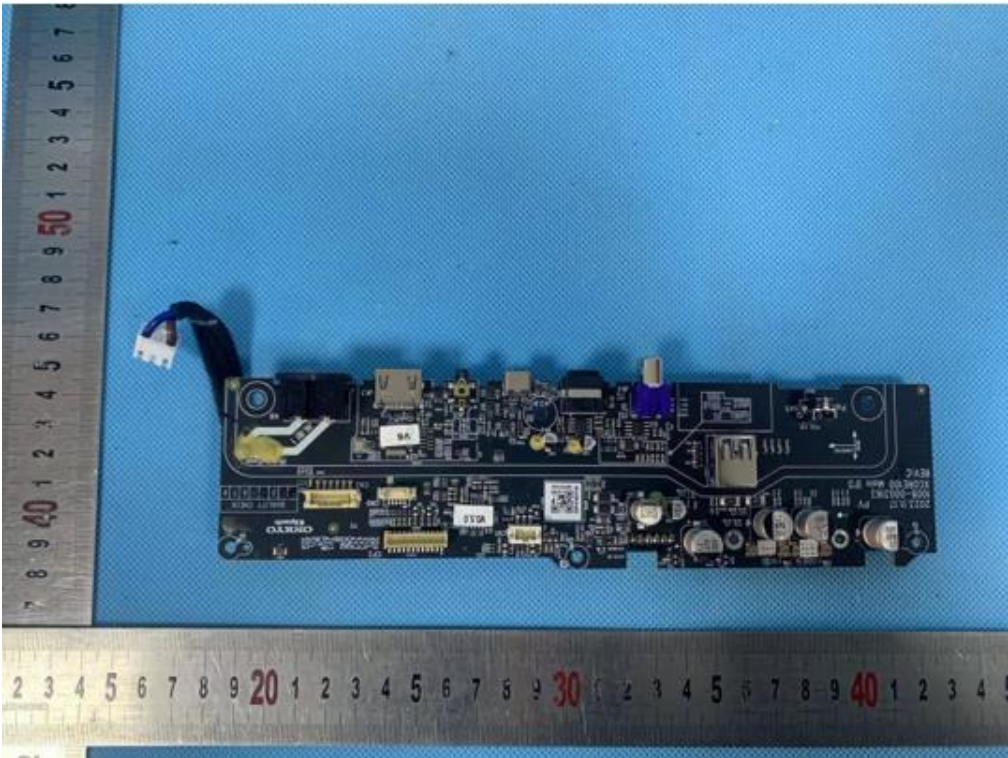


**Internal Photos**  
M/N: Flexus CORE 100

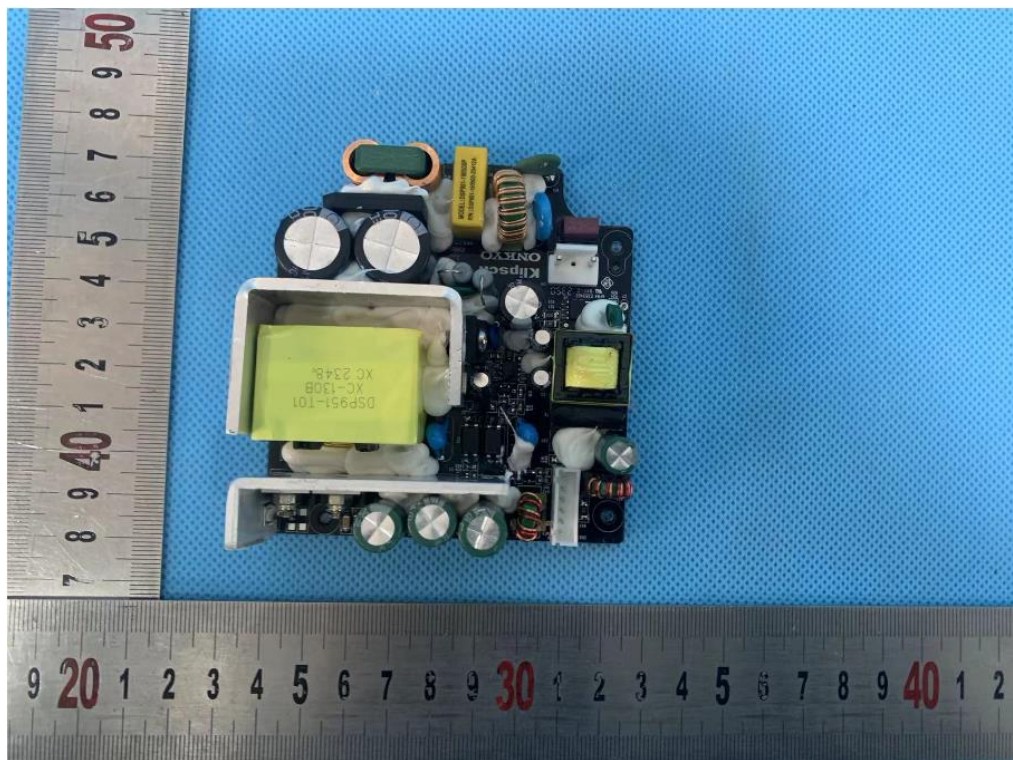
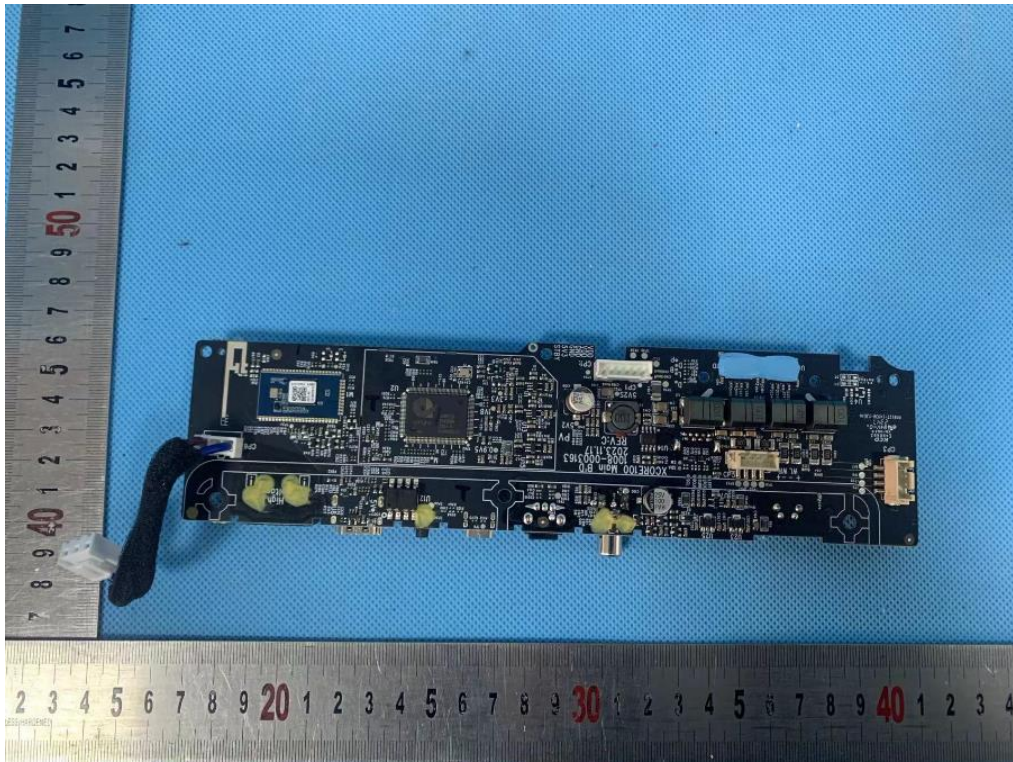




**Internal Photos**  
M/N: Flexus CORE 100

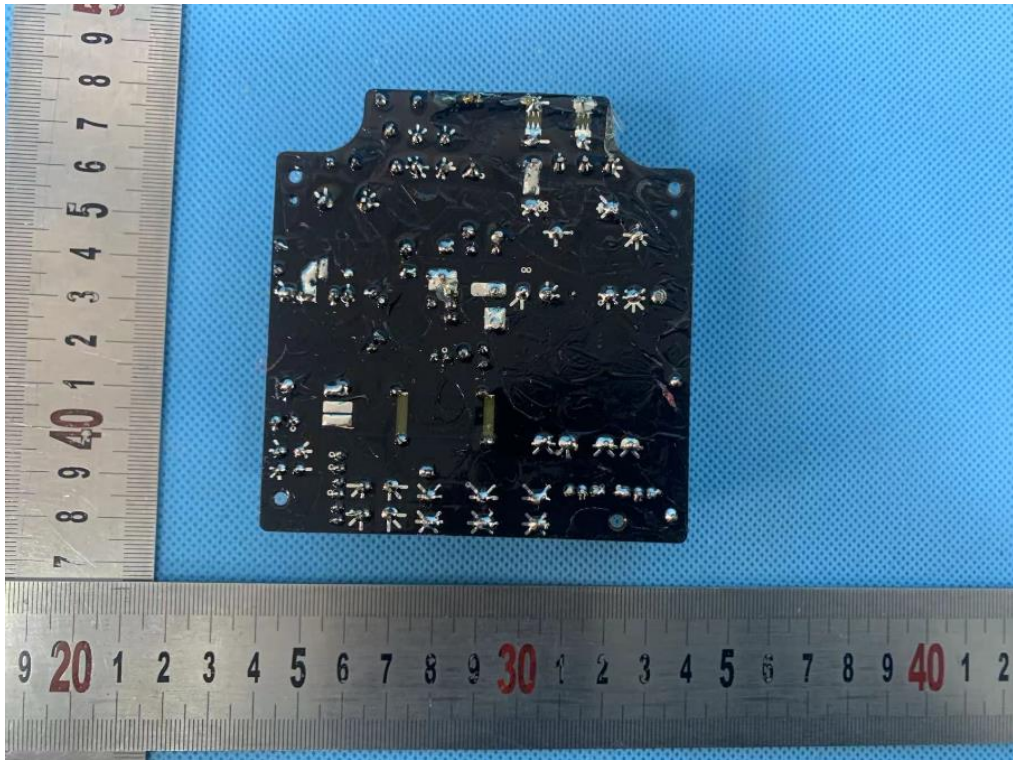


**Internal Photos**  
M/N: Flexus CORE 100

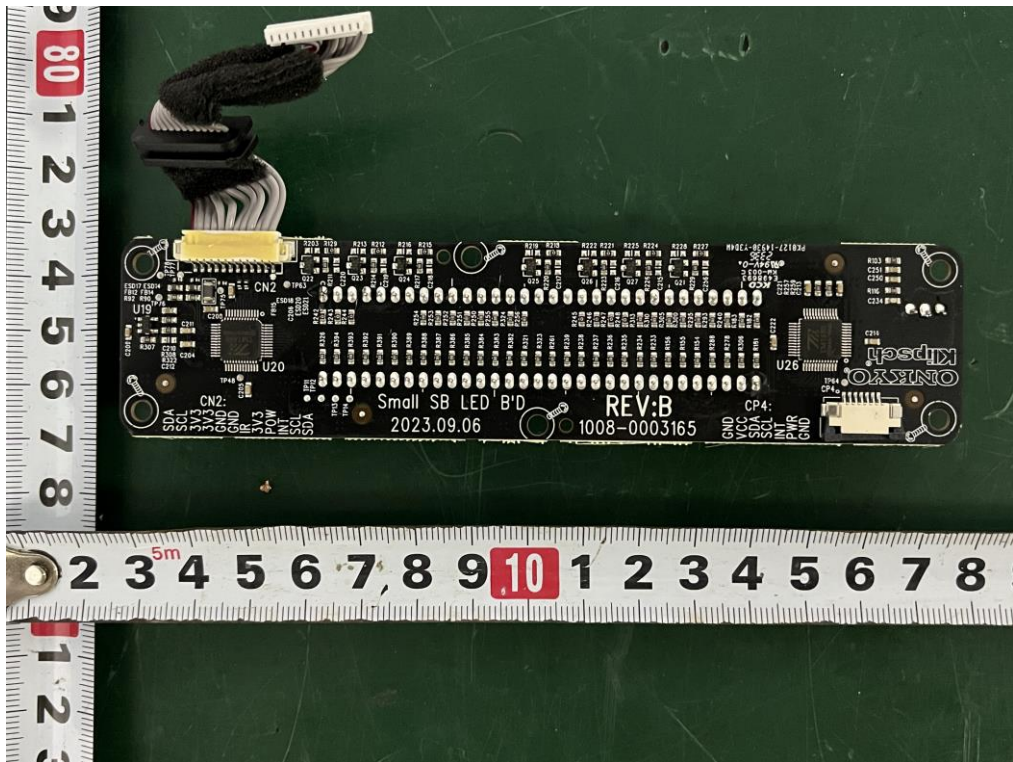
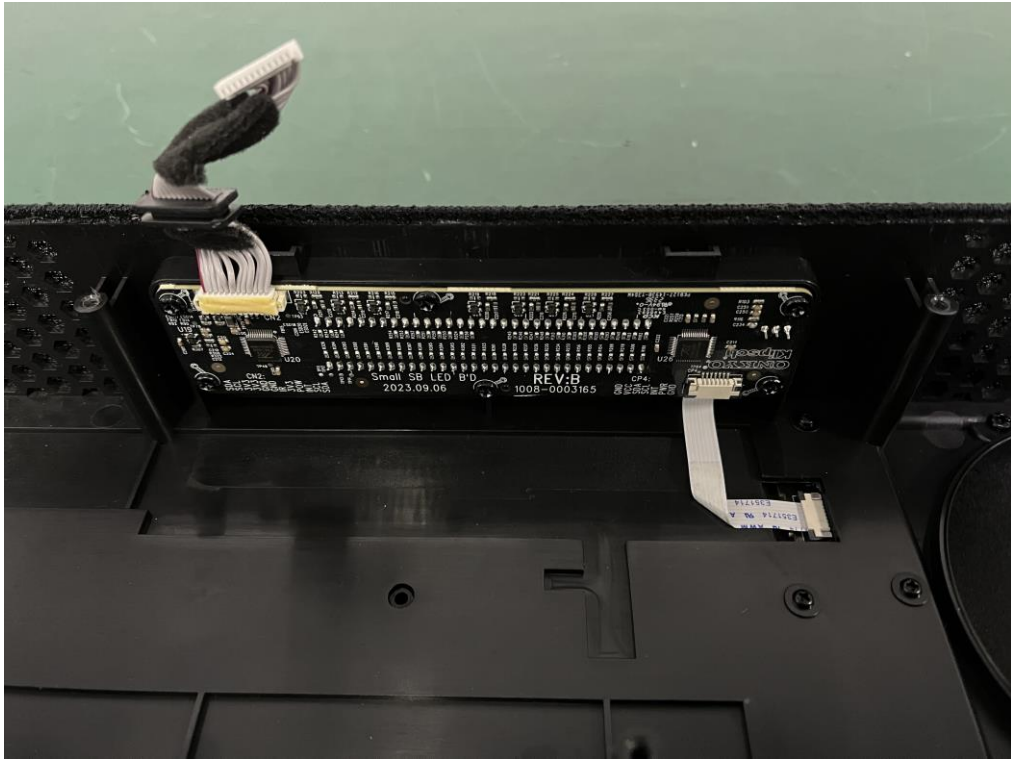




**Internal Photos**  
M/N: Flexus CORE 100

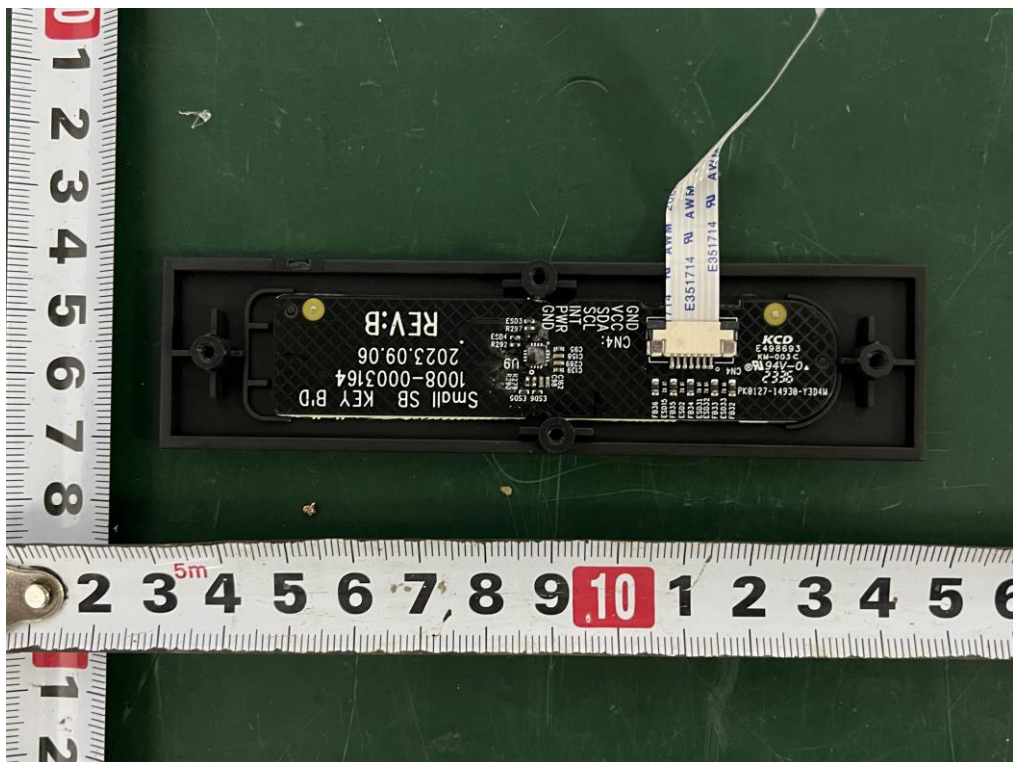
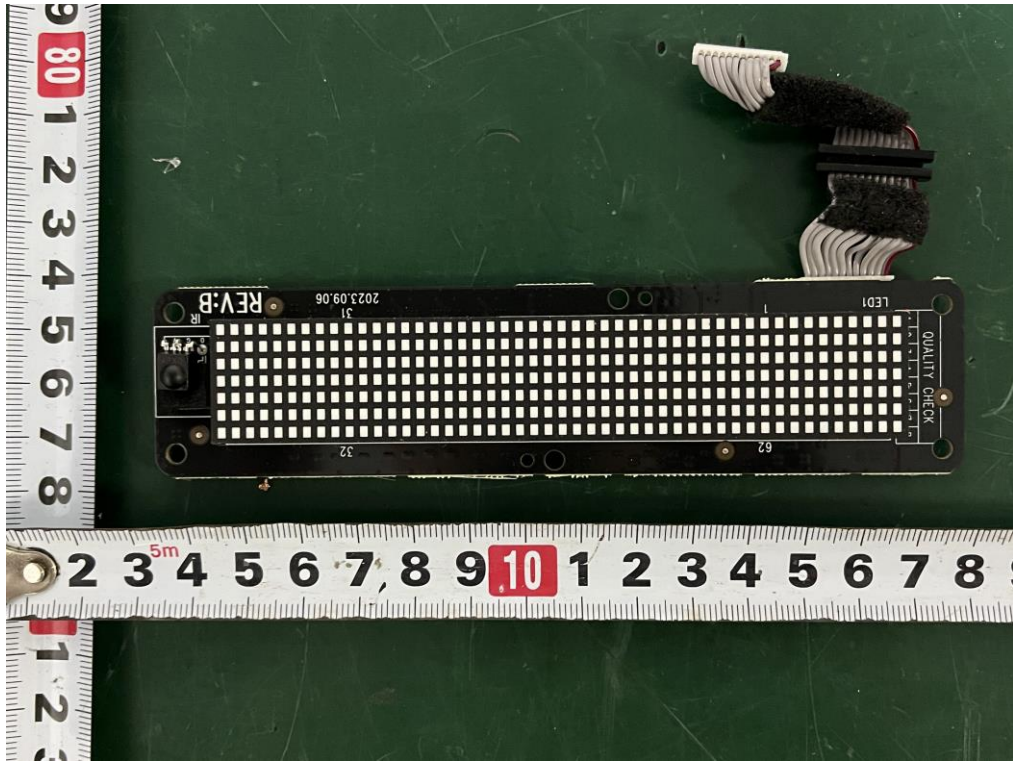


**Internal Photos**  
M/N: Flexus CORE 100

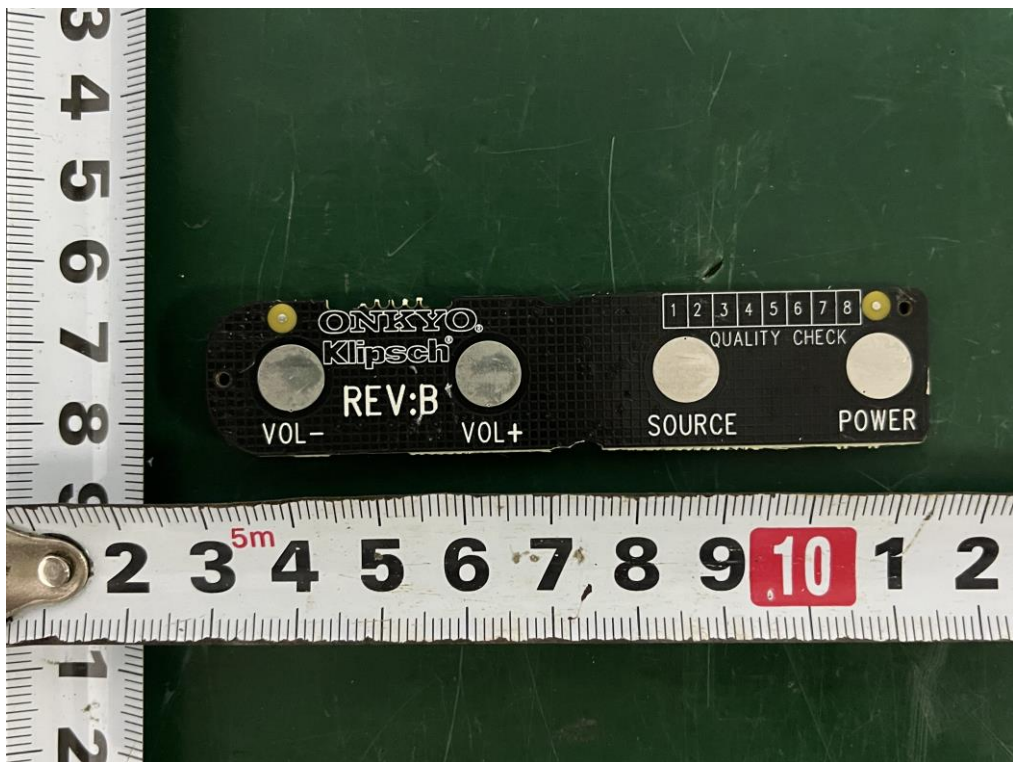
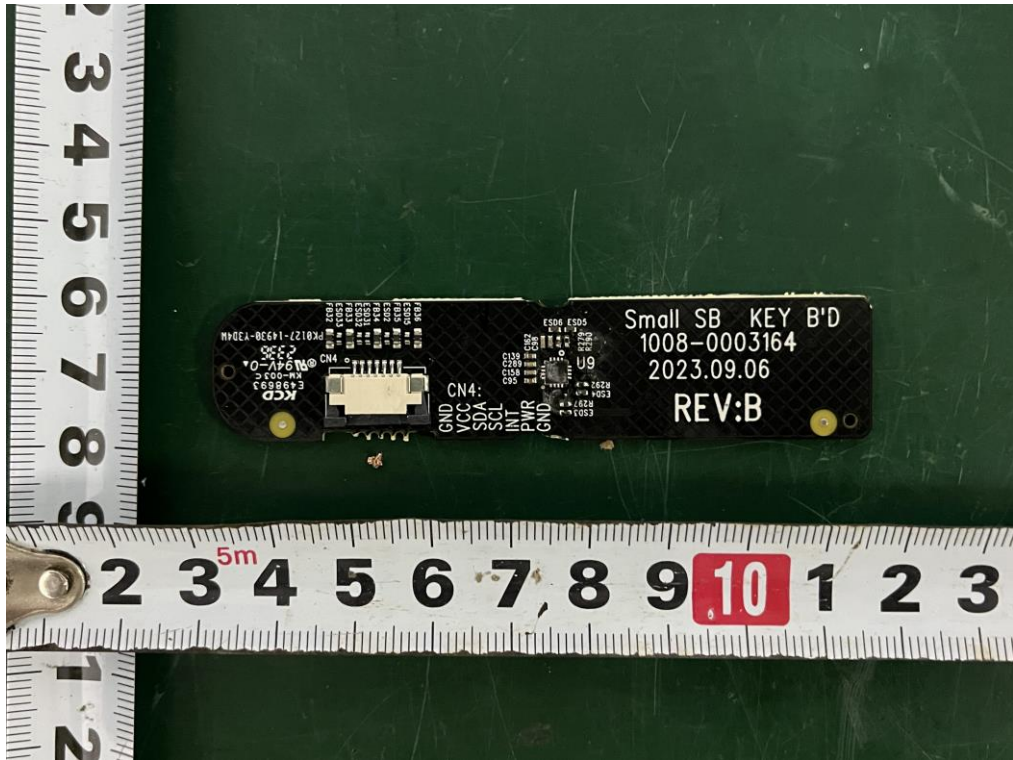




**Internal Photos**  
M/N: Flexus CORE 100

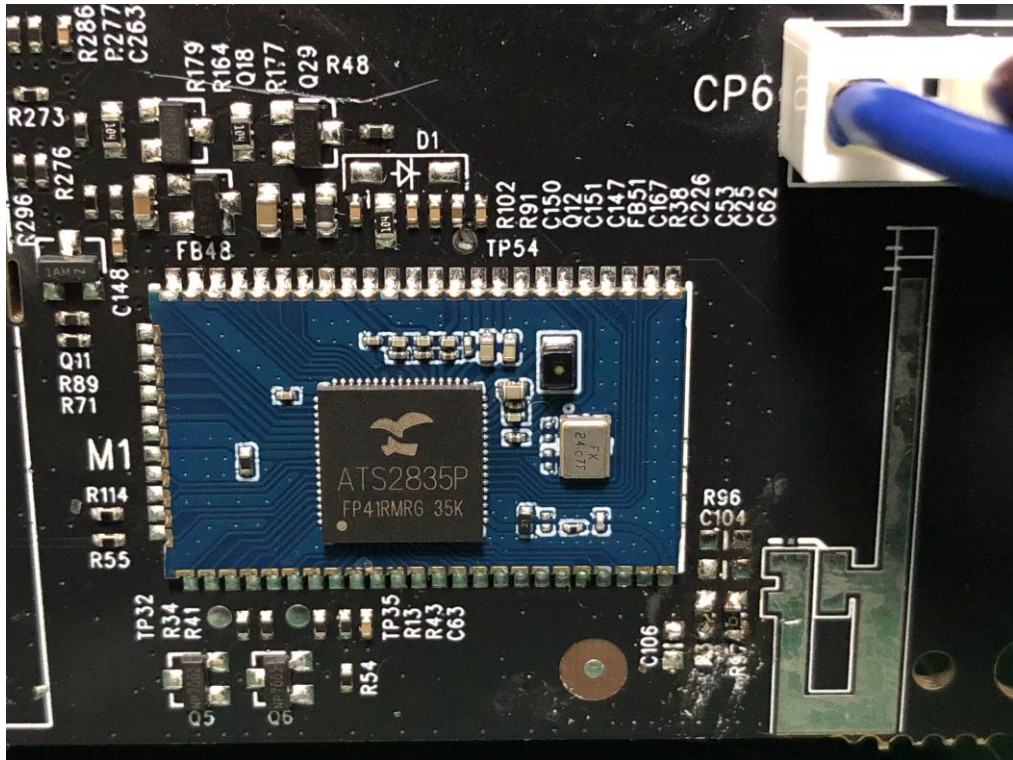


**Internal Photos**  
M/N: Flexus CORE 100





**Internal Photos**  
M/N: Flexus CORE 100



Bluetooth  
Antenna



**End of Test Report**