

# FCC PART 15C TEST REPORT FOR CERTIFICATION On Behalf of

Klipsch Group, Inc.

Portable Bluetooth Party Speaker

Model Number: Vegas

FCC ID: STI-VEGAS

Applicant :	Klipsch Group, Inc.
Address:	3502 Woodview Trace, Indianapolis, IN 46268, USA
Prepared By:	EST Technology Co., Ltd.
	Chilingxiang, Qishantou, Santun, Houjie, Dongguan, Guangdong, China
Tel: 86-769-83081888-808	

Report Number:	ESTE-R2409058
Date of Test:	Aug. 21, 2024 ~ Sep. 03, 2024
Date of Report:	Sep. 06, 2024

## TABLE OF CONTENTS

Description	Page
TEST REPORT VERIFICATION.....	3
1. GENERAL INFORMATION.....	5
1.1. Description of Device (EUT).....	5
1.2. Antenna Information.....	5
1.3. Information of RF Cable.....	5
2. SUMMARY OF TEST.....	6
2.1. Summary of test result.....	6
2.2. Test Facilities.....	7
2.3. Measurement uncertainty.....	8
2.4. Assistant equipment used for test.....	8
2.5. Block Diagram.....	8
2.6. Test Mode.....	9
2.7. Power Setting of Test Software.....	9
2.8. Duty Cycle.....	9
2.9. Channel List.....	10
2.10. Test Equipment List.....	11
3. 6dB BANDWIDTH.....	13
3.1. Limit.....	13
3.2. Test Setup.....	13
3.3. Spectrum Analyzer Setting.....	13
3.4. Test Procedure.....	13
3.5. Test Result.....	13
4. MAXIMUM PEAK OUTPUT POWER.....	14
4.1. Limit.....	14
4.2. Test Setup.....	14
4.3. Spectrum Analyzer Setting.....	14
4.4. Test Procedure.....	14
4.5. Test Result.....	14
5. POWER SPECTRAL DENSITY.....	15
5.1. Limit.....	15
5.2. Test Setup.....	15
5.3. Spectrum Analyzer Setting.....	15
5.4. Test Procedure.....	15
5.5. Test Result.....	15
6. CONDUCTED BAND EDGE.....	16
6.1. Limit.....	16
6.2. Test Setup.....	16
6.3. Spectrum Analyzer Setting.....	16
6.4. Test Procedure.....	16
6.5. Test Result.....	16
7. CONDUCTED SPURIOUS EMISSIONS.....	17
7.1. Limit.....	17
7.2. Test Setup.....	17

7.3. Spectrum Analyzer Setting.....	17
7.4. Test Procedure.....	17
7.5. Test Result.....	17
8. RADIATED SPURIOUS EMISSIONS AND BAND EDGE .....	18
8.1. Limit.....	18
8.2. Test Setup.....	19
8.3. Spectrum Analyzer Setting.....	20
8.4. Test Procedure.....	21
8.5. Test Result.....	22
9. AC POWER LINE CONDUCTED EMISSIONS .....	34
9.1. Limit.....	34
9.2. Test Setup.....	34
9.3. Spectrum Analyzer Setting.....	34
9.4. Test Procedure.....	34
9.5. Test Result.....	36
10. ANTENNA REQUIREMENTS .....	38
10.1. Limit .....	38
10.2. Test Result.....	38
11. APPENDIX.....	39
12. TEST SETUP PHOTO .....	53
13. EUT PHOTO.....	55

<b>Applicant: Address:</b>	Klipsch Group, Inc. 3502 Woodview Trace, Indianapolis, IN 46268, USA		
<b>Manufacturer: Address:</b>	Klipsch Group, Inc. 3502 Woodview Trace, Indianapolis, IN 46268, USA		
<b>Factory: Address:</b>	Shenzhen Great Power Innovation And Technology Enterprise Co., Ltd. No. 331, Guiyue Road, Dafu Community, Guanlan Street, Longhua District, Shenzhen		
<b>E.U.T:</b>	Portable Bluetooth Party Speaker		
<b>Model Number:</b>	Vegas		
<b>Power Supply:</b>	AC 100-240V, 50/60Hz; DC 7.4V From Battery		
<b>Trade Name:</b>	Klipsch	<b>Serial No.:</b>	-----
<b>Date of Receipt:</b>	Aug. 21, 2024	<b>Date of Test:</b>	Aug. 21, 2024 ~ Sep. 03, 2024
<b>Test Specification:</b>	FCC Part 15 Subpart C (15.247) ANSI C63.10:2013 FCC KDB 558074 D01 15.247 Meas Guidance v05r02		
<b>Test Result:</b>	<p>The device described above is tested by EST Technology Co., Ltd. The measurement results were contained in this test report and EST Technology Co., Ltd. was assumed full responsibility for the accuracy and completeness of these measurements. Also, this report shows that the EUT to be technically compliance with the FCC Rules and Regulations Part 15 Subpart C requirements.</p> <p>This report applies to above tested sample only and shall not be reproduced in part without written approval of EST Technology Co., Ltd.</p>		
<b>Date: Sep. 06, 2024</b>			

Prepared by:

Reviewed by:

Approved by:

*Zephyr Zhu*

Zephyr Zhu / Assistant

*Seven Wang*

Seven Wang / Engineer



Iceman Hu / Manager

**Other Aspects:**

None.

Abbreviations: OK/P=passed    fail/F=failed    n.a/N=not applicable    E.U.T=equipment under tested

This test report is based on a single evaluation of one sample of above mentioned products ,It is not permitted to be duplicated in extracts without written approval of EST Technology Co., Ltd.

# 1.GENERAL INFORMATION

## 1.1.Description of Device (EUT)

Product Name	:	Portable Bluetooth Party Speaker
Model Number	:	Vegas
Software Version	:	N/A
Hardware Version	:	N/A
Operation frequency	:	2402MHz~2480MHz
Number of channel	:	40
Max Output Power (PEAK)	:	6.16dBm
Modulation Type	:	GFSK
Sample Type	:	Prototype production

Note: For a more detailed features description, please refer to the manufacturer's specifications or the user's manual.

## 1.2.Antenna Information

Ant No.	Brand	Model Name	Antenna Type	Connector	Gain (dBi)
1	-	-	Internal	-	2.3

Note:  
 1.The antenna gain is declared by the customer and the laboratory is not responsible for the accuracy of the antenna gain.  
 2.The test results of this report only apply to the sample as received

## 1.3.Information of RF Cable

Cable Loss(dB)	Provided by
1.0	Klipsch Group, Inc.

Note:  
 1.The customer declared the loss value of the RF Cable. and the test results of this report only apply to the sample as received.  
 2.The laboratory is not responsible for the accuracy of the cable loss.

## 2.SUMMARY OF TEST

### 2.1.Summary of test result

No.	Description of Test Item	FCC Standard Section	Results
1	6dB Bandwidth	15.247(a)(2)	PASS
2	Maximum Peak Output Power	15.247(b)(3)	PASS
3	Power Spectral Density	15.247(e)	PASS
4	Conducted Band Edge	15.247(d)	PASS
5	Conducted Spurious Emissions	15.247(d)	PASS
6	Radiated Spurious Emissions and Band Edge	15.205 15.209 15.247(d)	PASS
7	AC Power Line Conducted Emissions	15.207	PASS
8	Antenna Requirement	15.203	PASS

Note:“N/A” denotes test is not applicable in this test report.

## 2.2. Test Facilities

EMC Lab : Accredited by CNAS, CHINA  
Registration No.: L5288  
This Accreditation is valid until: November 12, 2029

Recognized by FCC, USA  
Designation Number: CN1215  
This Recognition is valid until: January 31, 2026

Accredited by A2LA, USA  
Registration No.: 4366.01  
This Accreditation is valid until: January 31, 2026

Recognized by Industry Canada  
CAB identifier No.: CN0035  
This Recognition is valid until: January 31, 2026

Recognized by VCCI, Japan  
Registration No.:C-14103; T-20073; R-13663;  
R-20103; G-20097  
Date of registration: Apr. 20, 2020  
This Recognition is valid until: Apr. 19, 2026

Recognized by TUV Rheinland, Germany  
Registration No.: UA 50413872 0001  
Date of registration: July 31, 2018

Recognized by Intertek  
Registration No.: 2011-RTL-L2-64  
Date of registration: November 08, 2018

Name of Firm : EST Technology Co., Ltd.

Site Location : Chilingxiang, Qishantou, Santun, Houjie, Dongguan,  
Guangdong, China



### 2.3.Measurement uncertainty

Test Item	Uncertainty
Uncertainty for Conduction emission test	±3.48dB
Uncertainty for spurious emissions test (Below 30MHz)	±1.62 dB
Uncertainty for spurious emissions test (30MHz-1GHz)	±4.60 dB(Polarize: H)
	±4.68 dB(Polarize: V)
Uncertainty for spurious emissions test (1GHz to 25GHz)	±4.96dB
Uncertainty for radio frequency	$7 \times 10^{-8}$
Uncertainty for conducted RF Power	1.08dB
Uncertainty for Power density test	0.26dB

Note: This uncertainty represents an expanded uncertainty expressed at approximately the 95% confidence level using a coverage factor of k=2.

### 2.4.Assistant equipment used for test

Item	Equipment	Brand	Model Name/Type No.	FCC ID	Series No.
-	-	-	-	-	-

Item	Shielded Type	Ferrite Core	Length	Note
-	-	-	-	-

### 2.5.Block Diagram

For radiated emissions test: EUT was placed on a turn table, which is 0.8 (or 1.5) meter high above ground. EUT was beset into BLE test mode by software before test.



DC 7.4V or AC 100-240V, 50/60Hz  
(EUT: Portable Bluetooth Party Speaker)



## 2.6. Test Mode

The test mode was selected for the final test as listed below.

Test Item	Modulation Type	Test Channel
6dB Bandwidth	GFSK	Low/Middle/High
Maximum Peak Output Power	GFSK	Low/Middle/High
Power Spectral Density	GFSK	Low/Middle/High
Conducted Band Edge	GFSK	Low/ High
Conducted Spurious Emissions	GFSK	Low/Middle/High
Radiated Spurious Emissions(Below 1GHz)	GFSK	Low/Middle/High
Radiated Spurious Emissions(Above 1GHz)	GFSK	Low/Middle/High
Radiated Band Edge	GFSK	Low/High
AC Power Line Conducted Emissions	GFSK	Low/Middle/High

Note:In radiated measurement,the EUT had been pre-scan on the positioned of each 3 axis(X,Y,Z), the worst case was found when positioned on **X-plane**.

## 2.7. Power Setting of Test Software

Software Name	BK32xx RF Test_V1.8.2		
Frequency(MHz)	2402	2440	2480
GFSK 1M	3	3	3

Note: This information is provided by the applicant.

## 2.8. Duty Cycle

Refer to section 11: Appendix G

Note:

1. If duty cycle <98 %, the conducted average output power and average power spectral density should be add duty factor.
2. If duty cycle ≥98 %,the EUT is consider to be transmitting continuously,the conducted average output power and average power spectral density no need to add duty factor(consider to be zero).
3. The conducted peak output power and peak power spectral density no need to consider duty factor.
4. The on-time time is transmission duration(T).

## 2.9.Channel List

Channel No.	Frequency (MHz)	Channel No.	Frequency (MHz)
0	2402	1	2404
2	2406	3	2408
4	2410	5	2412
6	2414	7	2416
8	2418	9	2420
10	2422	11	2424
12	2426	13	2428
14	2430	15	2432
16	2434	17	2436
18	2438	19	2440
20	2442	21	2444
22	2446	23	2448
24	2450	25	2452
26	2454	27	2456
28	2458	29	2460
30	2462	31	2464
32	2466	33	2468
34	2470	35	2472
36	2474	37	2476
38	2478	39	2480

## 2.10. Test Equipment List

### For conducted emission test

Equipment	Manufacturer	Model No.	Serial No.	Calibration Body	Last Cal.	Next Cal.
EMI Test Receiver	Rohde & Schwarz	ESRP3	EST-E070	LISAI	June 11,24	June 10,25
Artificial Mains Network	Rohde & Schwarz	ENV216	EST-E048	LISAI	June 11,24	June 10,25
Pulse Limiter	Rohde & Schwarz	ESH3-Z2	EST-E078	LISAI	June 11,24	June 10,25
Test Software	Audix	e3-6.111221a	N/A	N/A	N/A	N/A

### For radiated emission test(9kHz-30MHz)

Equipment	Manufacturer	Model No.	Serial No.	Calibration Body	Last Cal.	Next Cal.
EMI Test Receiver	Rohde & Schwarz	ESR7	EST-E047	LISAI	June 11,24	June 10,25
Active Loop Antenna	SCHWARZBECK	FMZB 1519B	EST-E054	LISAI	June 11,24	June 10,25
Test Software	Audix	e3-6.111221a	N/A	N/A	N/A	N/A
9kHz-30MHz Cable	N/A	EST-001	N/A	N/A	N/A	N/A

### For radiated emissions test (30MHz-1000MHz)

Equipment	Manufacturer	Model No.	Serial No.	Calibration Body	Last Cal.	Next Cal.
EMI Test Receiver	Rohde & Schwarz	ESR7	EST-E047	LISAI	June 11,24	June 10,25
Bilog Antenna	Teseq	CBL 6111D	EST-E034	LISAI	June 11,24	June 10,25
Test Software	Audix	e3-6.111221a	N/A	N/A	N/A	N/A
30-1000MHz Cable	N/A	EST-002	N/A	N/A	N/A	N/A

### For radiated emission test(Above 1000MHz)

Equipment	Manufacturer	Model No.	Serial No.	Calibration Body	Last Cal.	Next Cal.
Horn Antenna	SCHWARZBECK	BBHA9120D	EST-E144	LISAI	June 11,24	June 10,25
Horn Antenna	Com-Power	AHA-840	EST-E133	LISAI	June 11,24	June 10,25
Low Noise Amplifier	RF	TRLA-010180 G45N	EST-E142	LISAI	June 11,24	June 10,25
Spectrum Analyzer	Rohde & Schwarz	FSV40	EST-E069	LISAI	June 11,24	June 10,25
Test Software	Audix	e3-6.111221a	N/A	N/A	N/A	N/A
Above 1GHz Cable	N/A	EST-003	N/A	N/A	N/A	N/A

**For connect EUT antenna terminal test**

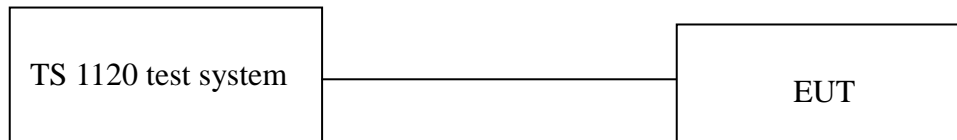
Equipment	Manufacturer	Model No.	Serial No.	Calibration Body	Last Cal.	Next Cal.
TS 1120	Tonscend	/	/	/	/	/
Test Software	Tonscend	TS1120-3	3.3.38	/	/	/
RF Control Unit	Tonscend	JS0806-2	EST-E134	LISAI	June 11,24	June 10,25
Signal and Spectrum Analyzer	Keysight	N9010B	EST-E141	LISAI	June 11,24	June 10,25

## 3.6dB BANDWIDTH

### 3.1.Limit

Systems using digital modulation techniques operate in the 2400-2483.5 MHz,the minimum 6 dB bandwidth shall be at least 500 kHz.

### 3.2.Test Setup



### 3.3.Spectrum Analyzer Setting

Spectrum Parameters	Setting
RBW	100KHz
VBW	300KHz
Span	3MHz
Sweep Time	Auto
Detector	Peak
Trace Mode	Max Hold

### 3.4.Test Procedure

- Connect EUT antenna terminal to the spectrum analyzer with RF cable.
- Spectrum analyzer setting parameters in accordance with section 3.3.
- Set the EUT transmit continuously with maximum output power.
- Allow trace to stabilize, use the ndB down function to measure 6dB Bandwidth.
- Repeat above procedures until all channels were measured.
- Record the results in the test report.

### 3.5.Test Result

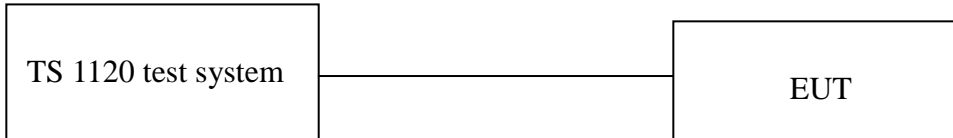
Refer to section 11: Appendix A

## 4. MAXIMUM PEAK OUTPUT POWER

### 4.1. Limit

For systems using digital modulation in 2400-2483.5 MHz, the maximum peak output power is 1 Watt(30dBm).

### 4.2. Test Setup



### 4.3. Spectrum Analyzer Setting

Spectrum Parameters	Setting
RBW	$\geq$ DTS Bandwidth
VBW	3*RBW
Span	$\geq$ 3*DTS Bandwidth
Sweep Time	Auto
Detector	Peak
Trace Mode	Max Hold

### 4.4. Test Procedure

- a. Connect EUT antenna terminal to the spectrum analyzer with RF cable.
- b. Spectrum analyzer setting parameters in accordance with section 4.3.
- c. Set the EUT transmit continuously with maximum output power.
- d. Allow trace to stabilize, use the marker-to-peak function to set the marker to the peak of the emission.
- e. Repeat above procedures until all channels were measured.
- f. Record the results in the test report.

### 4.5. Test Result

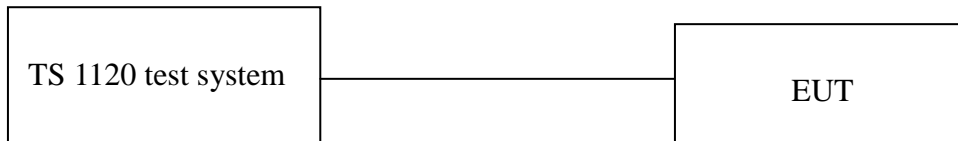
Refer to section 11: Appendix B

## 5. POWER SPECTRAL DENSITY

### 5.1. Limit

For digitally modulated systems, the power spectral density conducted from the intentional radiator to the antenna shall not be greater than 8 dBm in any 3 kHz band during any time interval of continuous transmission.

### 5.2. Test Setup



### 5.3. Spectrum Analyzer Setting

Spectrum Parameters	Setting
RBW	3KHz
VBW	10KHz
Span	2MHz
Sweep Time	Auto
Detector	Peak
Trace Mode	Max Hold

### 5.4. Test Procedure

- Connect EUT antenna terminal to the spectrum analyzer with RF cable.
- Spectrum analyzer setting parameters in accordance with section 5.3.
- Set the EUT transmit continuously with maximum output power.
- Allow trace to stabilize, use the marker-to-peak function to set the marker to the peak of the emission.
- Repeat above procedures until all channels were measured.
- Record the results in the test report.

### 5.5. Test Result

Refer to section 11: Appendix C

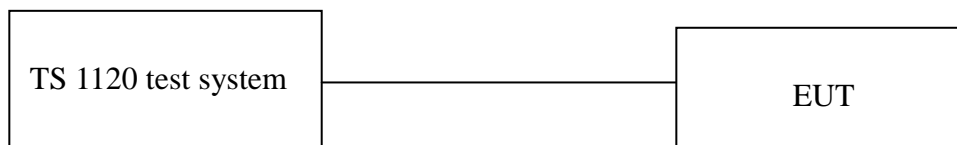


## 6.CONDUCTED BAND EDGE

### 6.1.Limit

In any 100 kHz bandwidth outside the frequency band in which the spread spectrum or digitally modulated intentional radiator is operating, the radio frequency power that is produced by the intentional radiator shall be at least 20 dB below that in the 100 kHz bandwidth within the band that contains the highest level of the desired power, based on either an RF conducted or a radiated measurement, provided the transmitter demonstrates compliance with the peak conducted power limits. If the transmitter complies with the conducted power limits based on the use of RMS averaging over a time interval, as permitted under paragraph (b)(3) of this section, the attenuation required under this paragraph shall be 30 dB instead of 20 dB. Attenuation below the general limits specified in §15.209(a) is not required. In addition, radiated emissions which fall in the restricted bands, as defined in §15.205(a), must also comply with the radiated emission limits specified in §15.209(a) (see §15.205(c)).

### 6.2.Test Setup



### 6.3.Spectrum Analyzer Setting

Spectrum Parameters	Setting
RBW	100KHz
VBW	300KHz
Span	100MHz
Sweep Time	Auto
Detector	Peak
Trace Mode	Max Hold

### 6.4.Test Procedure

- a. Connect EUT antenna terminal to the spectrum analyzer with RF cable.
- b. Spectrum analyzer setting parameters in accordance with section 6.3.
- c. Set the EUT transmit continuously with maximum output power.
- d. Allow trace to stabilize, use the marker function to mark the highest emission level outside the authorized band.
- e. Repeat above procedures until all channels were measured.
- f. Record the results in the test report.

### 6.5.Test Result

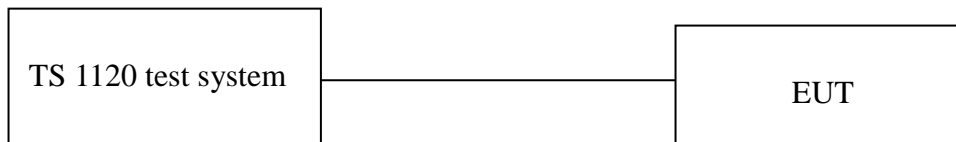
Refer to section 11: Appendix D & E

## 7.CONDUCTED SPURIOUS EMISSIONS

### 7.1.Limit

In any 100 kHz bandwidth outside the frequency band in which the spread spectrum or digitally modulated intentional radiator is operating, the radio frequency power that is produced by the intentional radiator shall be at least 20 dB below that in the 100 kHz bandwidth within the band that contains the highest level of the desired power, based on either an RF conducted or a radiated measurement, provided the transmitter demonstrates compliance with the peak conducted power limits. If the transmitter complies with the conducted power limits based on the use of RMS averaging over a time interval, as permitted under paragraph (b)(3) of this section, the attenuation required under this paragraph shall be 30 dB instead of 20 dB. Attenuation below the general limits specified in §15.209(a) is not required. In addition, radiated emissions which fall in the restricted bands, as defined in §15.205(a), must also comply with the radiated emission limits specified in §15.209(a) (see §15.205(c)).

### 7.2.Test Setup



### 7.3.Spectrum Analyzer Setting

Spectrum Parameters	Setting
RBW	100KHz
VBW	300KHz
Start frequency	30MHz
Stop frequency	26.5GHz
Sweep Time	Auto
Detector	Peak
Trace Mode	Max Hold

### 7.4.Test Procedure

- a. Connect EUT antenna terminal to the spectrum analyzer with RF cable.
- b. Spectrum analyzer setting parameters in accordance with section 7.3.
- c. Set the EUT transmit continuously with maximum output power.
- d. Allow trace to stabilize, use the marker function to mark the highest emission level outside the authorized band.
- e. Repeat above procedures until all channels were measured.
- f. Record the results in the test report.

### 7.5.Test Result

Refer to section 11: Appendix D & F

## 8.RADIATED SPURIOUS EMISSIONS AND BAND EDGE

### 8.1.Limit

All the emissions appearing within 15.205 restricted frequency bands shall not exceed the limits shown in 15.209, all the other emissions shall be at least 20dB below the fundamental emissions, or comply with 15.209 limits.

#### 15.205 Restricted frequency band

MHz	MHz	MHz	GHz
0.090 - 0.110	16.42 - 16.423	399.9 - 410	4.5 - 5.15
<sup>1</sup> 0.495 - 0.505	16.69475 - 16.69525	608 - 614	5.35 - 5.46
2.1735 - 2.1905	16.80425 - 16.80475	960 - 1240	7.25 - 7.75
4.125 - 4.128	25.5 - 25.67	1300 - 1427	8.025 - 8.5
4.17725 - 4.17775	37.5 - 38.25	1435 - 1626.5	9.0 - 9.2
4.20725 - 4.20775	73 - 74.6	1645.5 - 1646.5	9.3 - 9.5
6.215 - 6.218	74.8 - 75.2	1660 - 1710	10.6 - 12.7
6.26775 - 6.26825	108 - 121.94	1718.8 - 1722.2	13.25 - 13.4
6.31175 - 6.31225	123 - 138	2200 - 2300	14.47 - 14.5
8.291 - 8.294	149.9 - 150.05	2310 - 2390	15.35 - 16.2
8.362 - 8.366	156.52475 - 156.52525	2483.5 - 2500	17.7 - 21.4
8.37625 - 8.38675	156.7 - 156.9	2690 - 2900	22.01 - 23.12
8.41425 - 8.41475	162.0125 - 167.17	3260 - 3267	23.6 - 24.0
12.29 - 12.293	167.72 - 173.2	3332 - 3339	31.2 - 31.8
12.51975 - 12.52025	240 - 285	3345.8 - 3358	36.43 - 36.5
12.57675 - 12.57725	322 - 335.4	3600 - 4400	( <sup>2</sup> )

#### 15.209 Limit

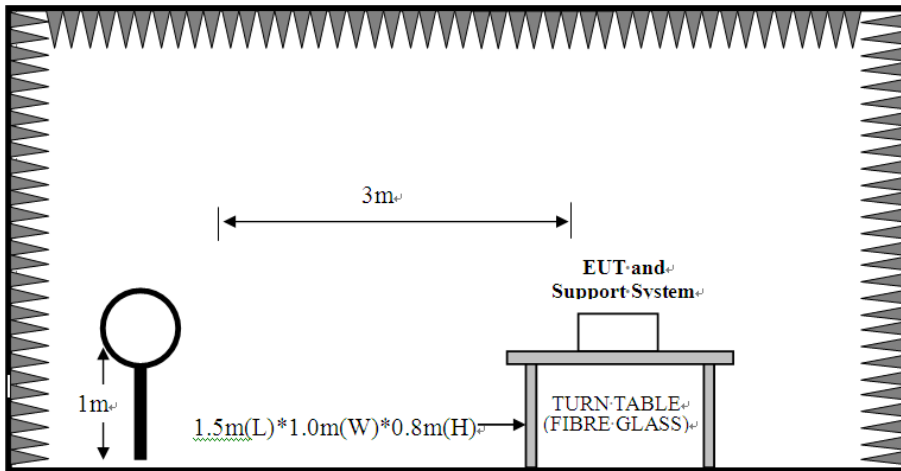
Frequency (MHz)	Field Strength( $\mu$ V/m)	Distance(m)
0.009-0.490	2400/F(kHz)	300
0.490-1.705	24000/F(kHz)	30
1.705-30	30	30
30-88	100	3
88-216	150	3
216-960	200	3
Above 960	500	3

Note:

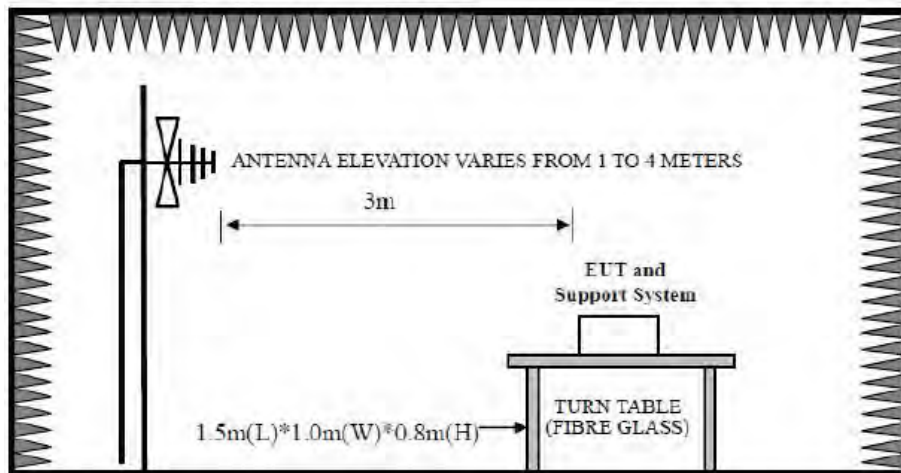
- (1) Emission level  $\text{dB}\mu\text{V} = 20 \log \text{Emission level } \mu\text{V/m}$ .
- (2) The smaller limit shall apply at the cross point between two frequency bands.
- (3) Distance is the distance in meters between the measuring instrument, antenna and the closest point of any part of the device or system.

## 8.2. Test Setup

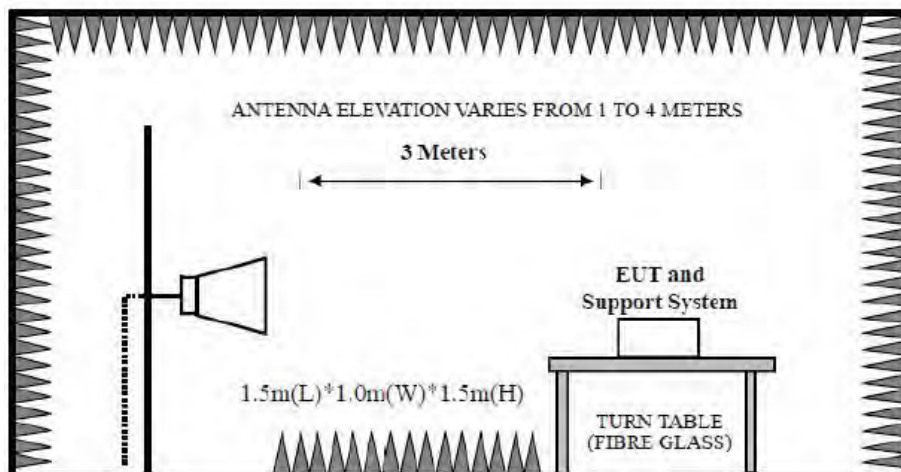
9kHz~30MHz



30~1000MHz



Above 1GHz



### 8.3.Spectrum Analyzer Setting

#### For 9KHz-150KHz

Spectrum Parameters	Setting
RBW	300Hz(for Peak&AVG)/CISPR 200Hz(for QP)
VBW	300Hz(for Peak&AVG)/CISPR 200Hz(for QP)
Start frequency	9KHz
Stop frequency	150KHz
Sweep Time	Auto
Detector	PEAK/QP/AVG
Trace Mode	Max Hold

#### For 150KHz-30MHz

Spectrum Parameters	Setting
RBW	9KHz
VBW	9KHz
Start frequency	150KHz
Stop frequency	30MHz
Sweep Time	Auto
Detector	QP
Trace Mode	Max Hold

#### For 30MHz-1GHz

Spectrum Parameters	Setting
RBW	120KHz
VBW	300KHz
Start frequency	30MHz
Stop frequency	1GHz
Sweep Time	Auto
Detector	QP
Trace Mode	Max Hold

#### For Above 1GHz

Spectrum Parameters	Setting
RBW	1MHz
VBW	PEAK Measurement
	AVG Measurement
	3MHz
	Duty cycle $\geq$ 98%,VBW=10Hz
	Duty cycle $<$ 98%,VBW $\geq$ 1/T
Start frequency	1GHz
Stop frequency	25GHz
Sweep Time	Auto
Detector	PEAK
Trace Mode	Max Hold

Note :T is the on-time time of the duty cycle,when EUT transmit continuously with maximum output power,unit is seconds. reference section 2.8 for the on-time time.

## 8.4.Test Procedure

- a. EUT was placed on a turn table, which is 0.8 meter high above ground for below 1GHz test, and which is 1.5 meter high above ground for above 1GHz test.
- b. EUT is set 3 meters away from the receiving antenna, which is mounted on a antenna tower.
- c. Set the EUT transmit continuously with maximum output power.
- d. The turn table can rotate 360 degrees to determine the position of the maximum emission level.
- e. The antenna can be moved up and down between 1 meter and 4 meters to find out the maximum emission level. Both horizontal and vertical polarization of the antenna are set on test.
- f. Spectrum analyzer setting parameters in accordance with section 8.3.
- g. Repeat above procedures until all channels were measured.
- h. Record the results in the test report.

### Note:

1. For emissions above 1GHz, if peak level comply with average limit, then the average level is deemed to comply with average limit.
2. The frequency 2402MHz ,2440MHz and 2480MHz is fundamental frequency which no limit, the limit on plots is automatically generated by the software, it's not fundamental limit, we can't remove it.

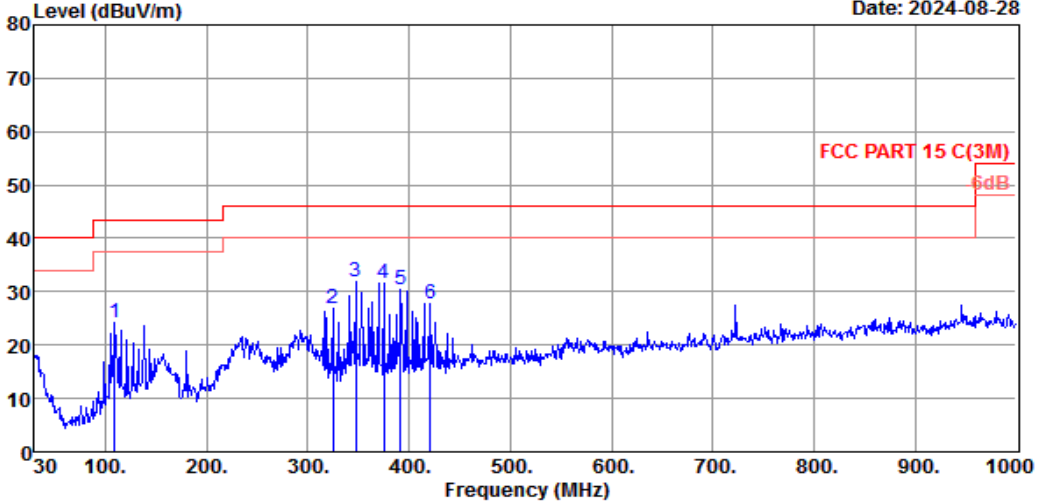




# EST Technology

Chilingxiang, Qishantou, Santun,  
Houjie, Dongguan, Guangdong, China  
Tel:+86-769-83081888  
Fax:+86-769-83081878

Data: 204 File: \\EMC-966-5\Test Data\2024\RF\Q\Qiang Da\Vegas.EM6 (208) Date: 2024-08-28



Site no. : 5# 966 Chamber Data no. : 204  
 Dis. / Ant. : 3m 54681 Ant. pol. : HORIZONTAL  
 Limit : FCC PART 15 C(3M)  
 Env. / Ins. : Temp:23.8°C :Humi:54%: Press:101.1kPa  
 Engineer : Luke  
 EUT : Portable Bluetooth Party Speaker  
 Power : DC 7.4V From Battery  
 M/N : Vegas  
 Test Mode : TX Mode  
 32889

	Freq. (MHz)	ANT Factor (dB/m)	Cable Loss (dB)	Reading (dBuV)	Emission Level (dBuV/m)	Limit (dBuV/m)	Margin (dB)	Remark
1	109.54	10.80	1.30	12.02	24.12	43.50	19.38	QP
2	324.88	13.70	3.15	10.13	26.98	46.00	19.02	QP
3	347.19	14.64	3.26	13.98	31.88	46.00	14.12	QP
4	375.32	15.00	3.40	13.29	31.69	46.00	14.31	QP
5	391.81	15.64	3.49	11.14	30.27	46.00	15.73	QP
6	420.91	16.78	3.63	7.46	27.87	46.00	18.13	QP

Remarks: 1. Emission Level= Antenna Factor + Cable Loss + Reading.  
 2. Margin= Limit - Emission Level.  
 3. The emission levels that are 20dB below the official limit are not reported.

Note:

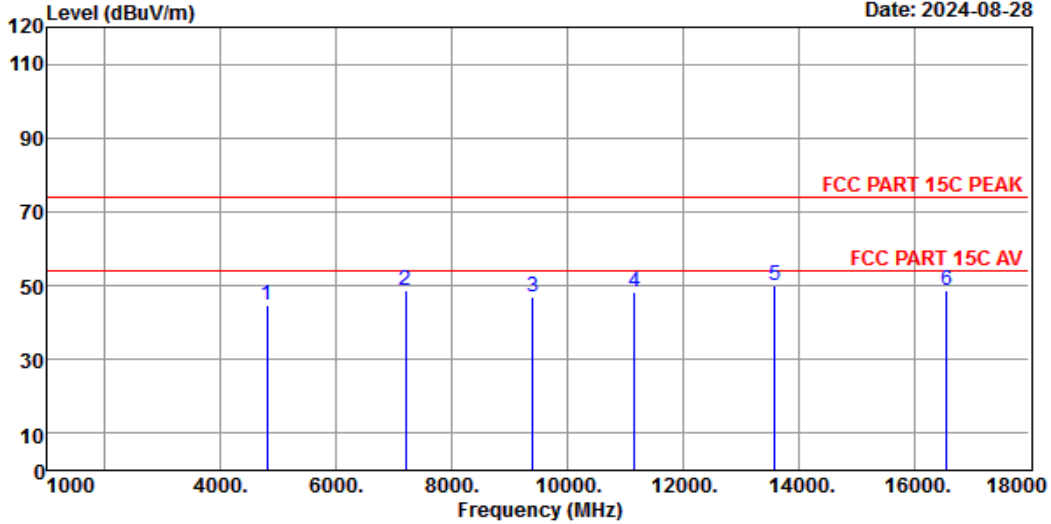
1. The amplitude of 9KHz to 30MHz spurious emission that is attenuated by more than 20dB below the permissible limit has no need to be reported.
2. All channels had been pre-test, only the worst case was reported.

### Radiated Emissions Above 1G

EST Technology

Chilingxiang, Qishantou, Santun,  
Houjie, Dongguan, Guangdong, China  
Tel:+86-769-83081888  
Fax:+86-769-83081878

Data: 189 File: \\EMC-966-5\Test Data\2024\RF\Q\Qiang Da\Vegas.EM6 (208) Date: 2024-08-28



Site no. : 5# 966 Chamber Data no. : 189  
 Dis. / Ant. : 3m BBHA9120D-2667 Ant. pol. : HORIZONTAL  
 Limit : FCC PART 15C PEAK  
 Env. / Ins. : Temp:19.5°C;Humi:50%;Press:101.55kPa  
 Engineer : Aron  
 EUT : Portable Bluetooth Party Speaker  
 Power : DC 7.4V From Battery  
 M/N : Vegas  
 Test Mode : GFSK 1Mbps TX 2402MHz  
 32889

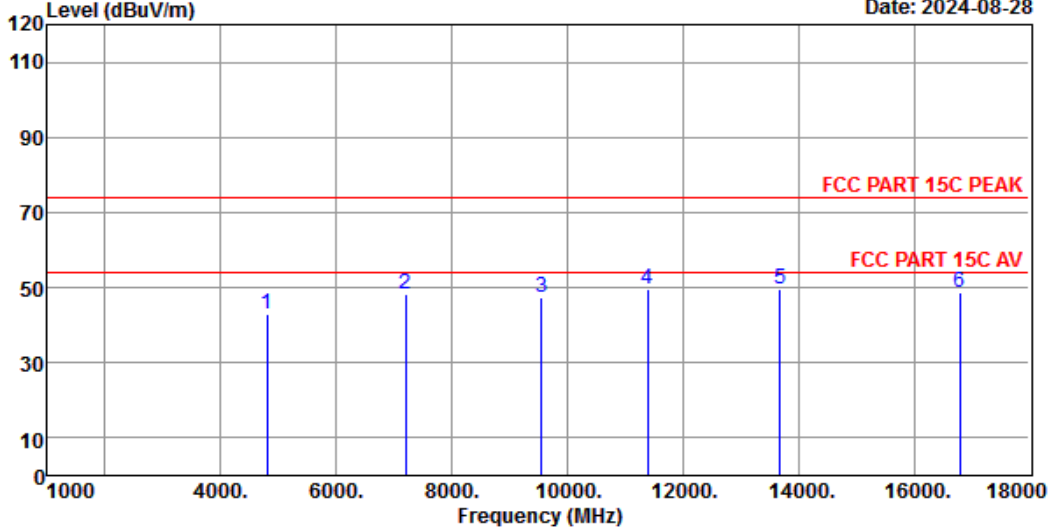
	Freq. (MHz)	Ant. Factor (dB/m)	Cable Loss (dB)	Amp Factor (dB)	Reading (dBuV)	Emission Level (dBuV/m)	Limits (dBuV/m)	Margin (dB)	Remark
1	4804.00	33.10	6.80	43.17	47.90	44.63	74.00	29.37	Peak
2	7206.00	37.80	8.41	42.90	45.52	48.83	74.00	25.17	Peak
3	9398.00	38.70	9.43	42.06	40.94	47.01	74.00	26.99	Peak
4	11166.00	39.20	10.66	41.05	39.60	48.41	74.00	25.59	Peak
5	13597.00	40.90	11.29	39.93	37.84	50.10	74.00	23.90	Peak
6	16572.00	39.80	13.06	42.68	38.50	48.68	74.00	25.32	Peak

Remarks: 1. Emission Level= Antenna Factor + Cable Loss - Amp Factor + Reading.  
 2. Margin= Limit - Emission Level.  
 3. The emission levels that are 20dB below the official limit are not reported.

# EST Technology

Chilingxiang, Qishantou, Santun,  
Houjie, Dongguan, Guangdong, China  
Tel: +86-769-83081888  
Fax: +86-769-83081878

Data: 190 File: \\EMC-966-5\Test Data\2024\RF\Q\Qiang Da\Vegas.EM6 (208) Date: 2024-08-28



Site no. : 5# 966 Chamber Data no. : 190  
 Dis. / Ant. : 3m BBHA9120D-2667 Ant. pol. : VERTICAL  
 Limit : FCC PART 15C PEAK  
 Env. / Ins. : Temp:19.5°C;Humi:50%;Press:101.55kPa  
 Engineer : Aron  
 EUT : Portable Bluetooth Party Speaker  
 Power : DC 7.4V From Battery  
 M/N : Vegas  
 Test Mode : GFSK 1Mbps TX 2402MHz  
 32889

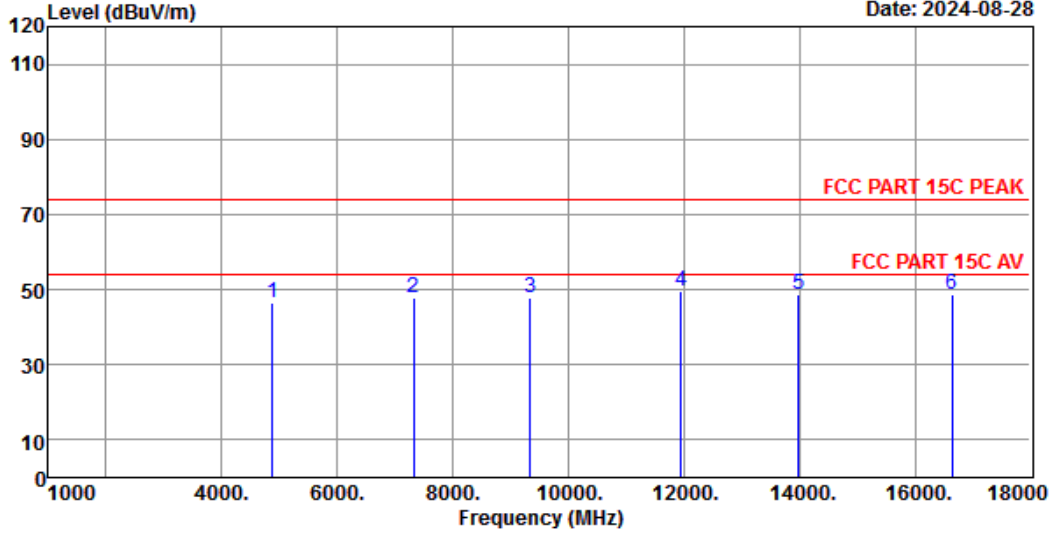
	Freq. (MHz)	Ant. Factor (dB/m)	Cable Loss (dB)	Amp Factor (dB)	Reading (dBuV)	Emission Level (dBuV/m)	Limits (dBuV/m)	Margin (dB)	Remark
1	4804.00	33.10	6.80	43.17	46.38	43.11	74.00	30.89	Peak
2	7206.00	37.80	8.41	42.90	45.10	48.41	74.00	25.59	Peak
3	9551.00	38.60	9.52	41.97	41.28	47.43	74.00	26.57	Peak
4	11387.00	40.20	10.77	40.98	39.72	49.71	74.00	24.29	Peak
5	13682.00	40.40	11.28	40.01	37.87	49.54	74.00	24.46	Peak
6	16793.00	39.10	13.35	42.64	39.08	48.89	74.00	25.11	Peak

Remarks: 1. Emission Level= Antenna Factor + Cable Loss - Amp Factor + Reading.  
 2. Margin= Limit - Emission Level.  
 3. The emission levels that are 20dB below the official limit are not reported.

# EST Technology

Chilingxiang, Qishantou, Santun,  
Houjie, Dongguan, Guangdong, China  
Tel: +86-769-83081888  
Fax: +86-769-83081878

Data: 191 File: \\EMC-966-5\Test Data\2024\RF\Q\Qiang Da\Vegas.EM6 (208) Date: 2024-08-28



Site no. : 5# 966 Chamber Data no. : 191  
 Dis. / Ant. : 3m BBHA9120D-2667 Ant. pol. : VERTICAL  
 Limit : FCC PART 15C PEAK  
 Env. / Ins. : Temp:19.5°C;Humi:50%;Press:101.55kPa  
 Engineer : Aron  
 EUT : Portable Bluetooth Party Speaker  
 Power : DC 7.4V From Battery  
 M/N : Vegas  
 Test Mode : GFSK 1Mbps TX 2440MHz  
 32889

	Freq. (MHz)	Ant. Factor (dB/m)	Cable Loss (dB)	Amp Factor (dB)	Reading (dBuV)	Emission Level (dBuV/m)	Limits (dBuV/m)	Margin (dB)	Remark
1	4876.00	33.47	6.86	43.15	49.26	46.44	74.00	27.56	Peak
2	7324.00	36.83	8.44	42.90	45.30	47.67	74.00	26.33	Peak
3	9347.00	38.30	9.40	42.09	42.26	47.87	74.00	26.13	Peak
4	11948.00	39.50	11.05	40.82	39.92	49.65	74.00	24.35	Peak
5	13988.00	40.33	11.26	40.28	37.40	48.71	74.00	25.29	Peak
6	16640.00	39.43	13.15	42.67	38.99	48.90	74.00	25.10	Peak

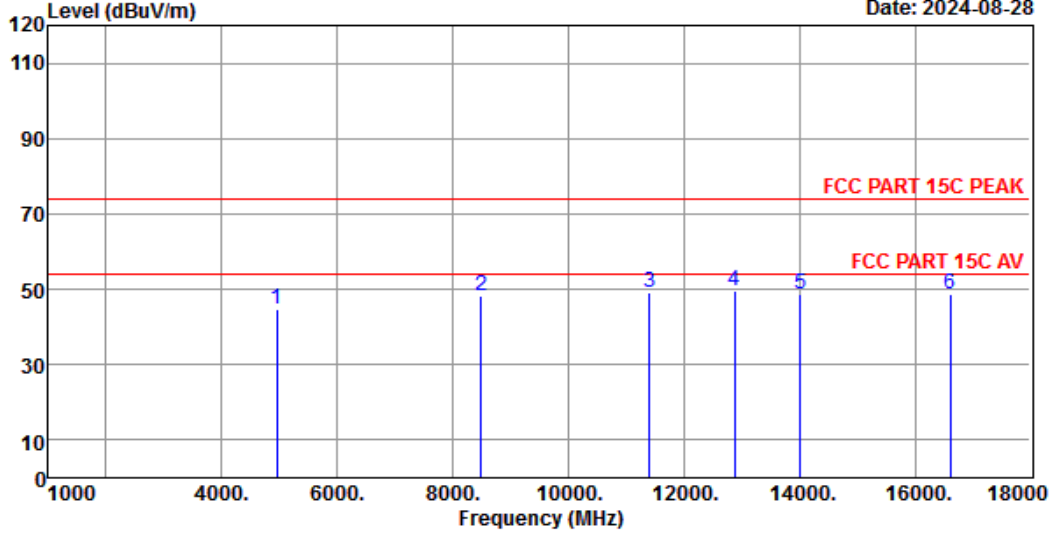
Remarks: 1. Emission Level= Antenna Factor + Cable Loss - Amp Factor + Reading.  
 2. Margin= Limit - Emission Level.  
 3. The emission levels that are 20dB below the official limit are not reported.



# EST Technology

Chilingxiang, Qishantou, Santun,  
Houjie, Dongguan, Guangdong, China  
Tel:+86-769-83081888  
Fax:+86-769-83081878

Data: 193 File: \\EMC-966-5\Test Data\2024\RF\Q\Qiang Da\Vegas.EM6 (208) Date: 2024-08-28



Site no. : 5# 966 Chamber Data no. : 193  
 Dis. / Ant. : 3m BBHA9120D-2667 Ant. pol. : VERTICAL  
 Limit : FCC PART 15C PEAK  
 Env. / Ins. : Temp:19.5°C;Humi:50%;Press:101.55kPa  
 Engineer : Aron  
 EUT : Portable Bluetooth Party Speaker  
 Power : DC 7.4V From Battery  
 M/N : Vegas  
 Test Mode : GFSK 1Mbps TX 2480MHz  
 32889

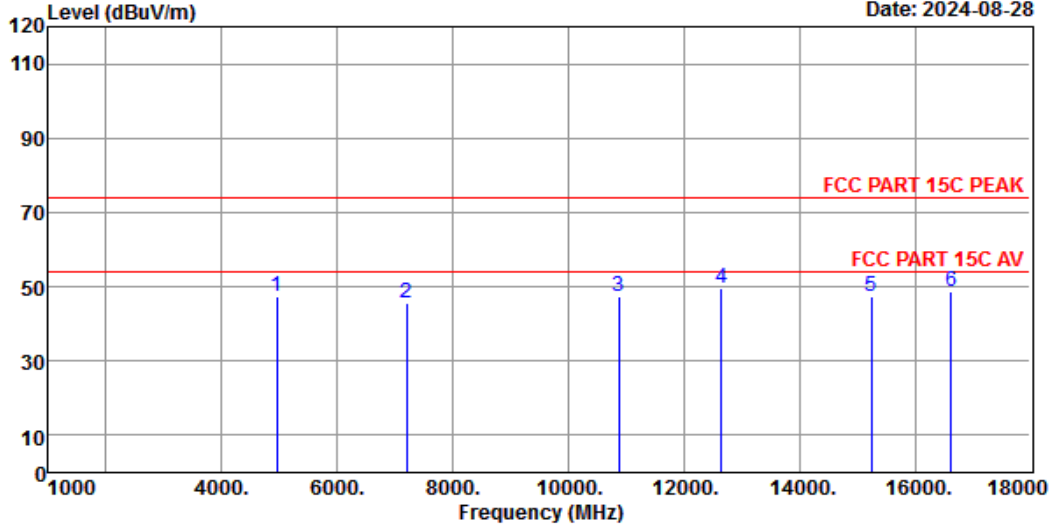
	Freq. (MHz)	Ant. Factor (dB/m)	Cable Loss (dB)	Amp Factor (dB)	Reading (dBuV)	Emission Level (dBuV/m)	Limits (dBuV/m)	Margin (dB)	Remark
1	4960.00	33.57	6.92	43.11	47.50	44.88	74.00	29.12	Peak
2	8497.00	38.00	8.91	42.61	43.89	48.19	74.00	25.81	Peak
3	11404.00	40.30	10.78	40.98	38.87	48.97	74.00	25.03	Peak
4	12883.00	40.17	11.30	39.57	37.49	49.39	74.00	24.61	Peak
5	14022.00	40.15	11.26	40.34	37.65	48.72	74.00	25.28	Peak
6	16606.00	39.90	13.10	42.68	38.41	48.73	74.00	25.27	Peak

Remarks: 1. Emission Level= Antenna Factor + Cable Loss - Amp Factor + Reading.  
 2. Margin= Limit - Emission Level.  
 3. The emission levels that are 20dB below the official limit are not reported.

# EST Technology

Chilingxiang, Qishantou, Santun,  
Houjie, Dongguan,Guangdong,China  
Tel:+86-769-83081888  
Fax:+86-769-83081878

Data: 194 File: \\EMC-966-5\Test Data\2024\RF\Q\Qiang Da\Vegas.EM6 (208) Date: 2024-08-28



Site no. : 5# 966 Chamber Data no. : 194  
 Dis. / Ant. : 3m BBHA9120D-2667 Ant. pol. : HORIZONTAL  
 Limit : FCC PART 15C PEAK  
 Env. / Ins. : Temp:19.5°C;Humi:50%;Press:101.55kPa  
 Engineer : Aron  
 EUT : Portable Bluetooth Party Speaker  
 Power : DC 7.4V From Battery  
 M/N : Vegas  
 Test Mode : GFSK 1Mbps TX 2480MHz  
 32889

	Freq. (MHz)	Ant. Factor (dB/m)	Cable Loss (dB)	Amp Factor (dB)	Reading (dBuV)	Emission Level (dBuV/m)	Limits (dBuV/m)	Margin (dB)	Remark
1	4960.00	33.57	6.92	43.11	49.90	47.28	74.00	26.72	Peak
2	7205.00	37.80	8.41	42.90	42.30	45.61	74.00	28.39	Peak
3	10877.00	38.25	10.49	41.17	39.86	47.43	74.00	26.57	Peak
4	12645.00	39.70	11.24	39.90	38.36	49.40	74.00	24.60	Peak
5	15246.00	38.30	11.42	42.50	40.26	47.48	74.00	26.52	Peak
6	16623.00	39.67	13.12	42.67	38.76	48.88	74.00	25.12	Peak

Remarks: 1. Emission Level= Antenna Factor + Cable Loss - Amp Factor + Reading.  
 2. Margin= Limit - Emission Level.  
 3. The emission levels that are 20dB below the official limit are not reported.

Note: The amplitude of 18GHz to 25GHz spurious emission that is attenuated by more than 20dB below the permissible limit has no need to be reported.

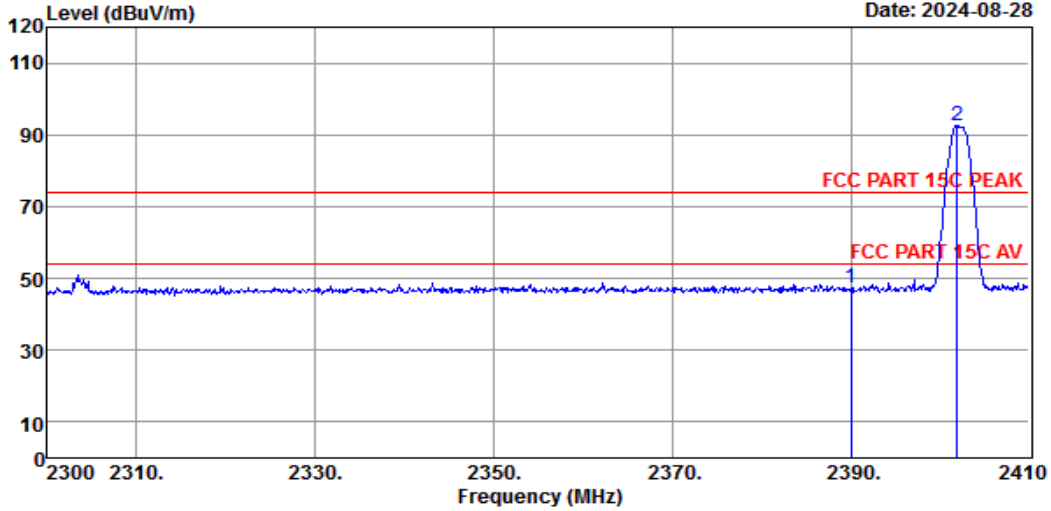


### Radiated Band Edge

EST Technology

Chilingxiang, Qishantou, Santun,  
Houjie, Dongguan, Guangdong, China  
Tel:+86-769-83081888  
Fax:+86-769-83081878

Data: 5 File: \\EMC-966-5\Test Data\2024\RF\Q\Qiang Da\Vegas.EM6 (208) Date: 2024-08-28



Site no. : 5# 966 Chamber Data no. : 5  
 Dis. / Ant. : 3m BBHA9120D-2667 Ant. pol. : HORIZONTAL  
 Limit : FCC PART 15C PEAK  
 Env. / Ins. : Temp:19.5°C;Humi:50%;Press:101.55kPa  
 Engineer : Aron  
 EUT : Portable Bluetooth Party Speaker  
 Power : DC 7.4V From Battery  
 M/N : Vegas  
 Test Mode : GFSK 1Mbps TX 2402MHz  
 32889

	Freq. (MHz)	Ant. Factor (dB/m)	Cable Loss (dB)	Amp Factor (dB)	Reading (dBuV)	Emission Level (dBuV/m)	Limits (dBuV/m)	Margin (dB)	Remark
1	2390.00	27.60	4.88	44.15	58.90	47.23	74.00	26.77	Peak
2	2401.86	27.60	4.88	44.15	104.08	92.41	74.00	-18.41	Peak

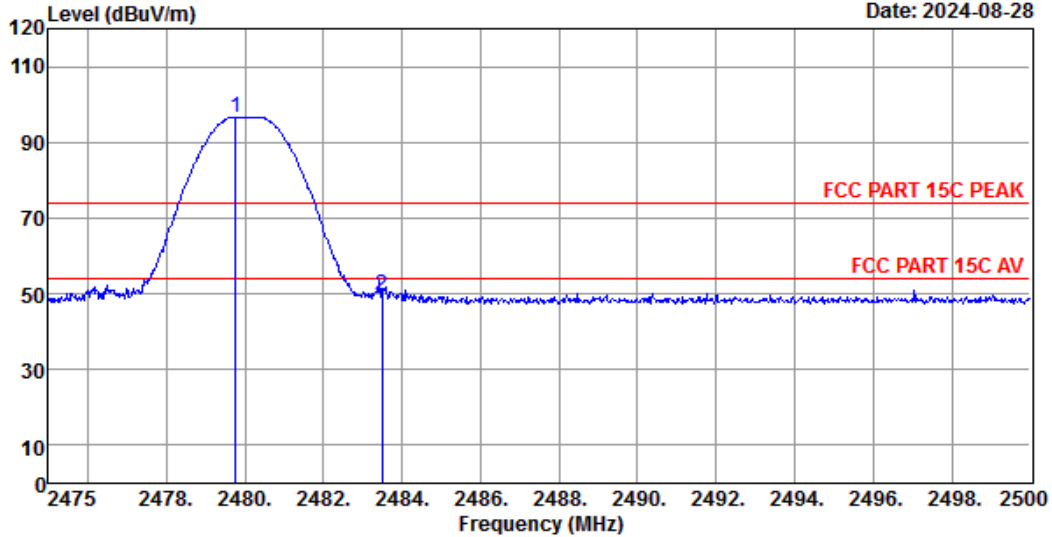
Remarks: 1. Emission Level= Antenna Factor + Cable Loss - Amp Factor + Reading.  
 2. Margin= Limit - Emission Level.  
 3. The emission levels that are 20dB below the official limit are not reported.



# EST Technology

Chilingxiang, Qishantou, Santun,  
Houjie, Dongguan,Guangdong,China  
Tel:+86-769-83081888  
Fax:+86-769-83081878

Data: 7 File: \\EMC-966-5\Test Data\2024\RF\Q\Qiang Da\Vegas.EM6 (208) Date: 2024-08-28



Site no. : 5# 966 Chamber Data no. : 7  
 Dis. / Ant. : 3m BBHA9120D-2667 Ant. pol. : VERTICAL  
 Limit : FCC PART 15C PEAK  
 Env. / Ins. : Temp:19.5°C;Humi:50%;Press:101.55kPa  
 Engineer : Aron  
 EUT : Portable Bluetooth Party Speaker  
 Power : DC 7.4V From Battery  
 M/N : Vegas  
 Test Mode : GFSK 1Mbps TX 2480MHz  
 32889

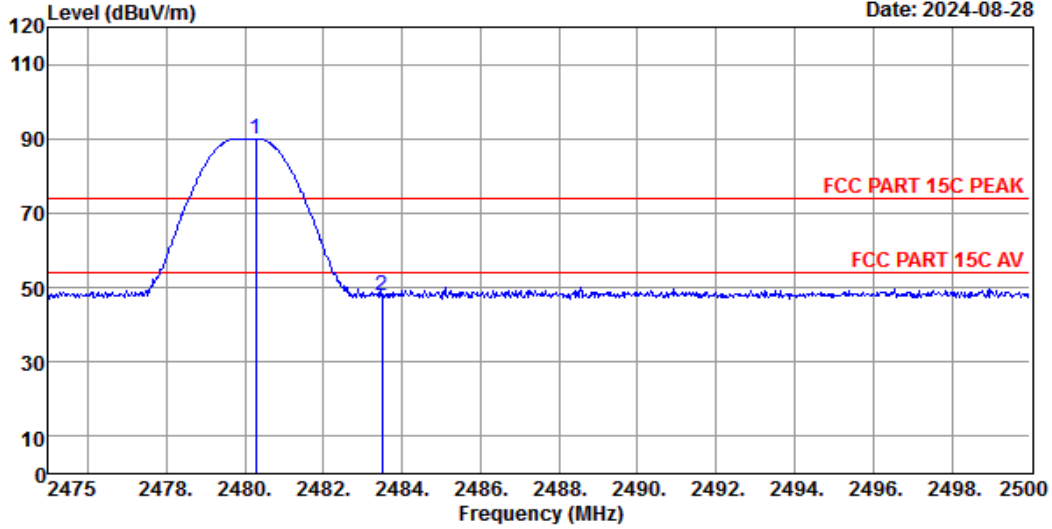
	Freq. (MHz)	Ant. Factor (dB/m)	Cable Loss (dB)	Amp Factor (dB)	Reading (dBuV)	Emission Level (dBuV/m)	Limits (dBuV/m)	Margin (dB)	Remark
1	2479.78	28.20	4.99	44.04	107.53	96.68	74.00	-22.68	Peak
2	2483.50	28.20	4.99	44.04	60.44	49.59	74.00	24.41	Peak

Remarks: 1. Emission Level= Antenna Factor + Cable Loss - Amp Factor + Reading.  
 2. Margin= Limit - Emission Level.  
 3. The emission levels that are 20dB below the official limit are not reported.

# EST Technology

Chilingxiang, Qishantou, Santun,  
Houjie, Dongguan, Guangdong, China  
Tel: +86-769-83081888  
Fax: +86-769-83081878

Data: 8 File: \\EMC-966-5\Test Data\2024\RF\Q\Qiang Da\Vegas.EM6 (208) Date: 2024-08-28



Site no. : 5# 966 Chamber Data no. : 8  
 Dis. / Ant. : 3m BBHA9120D-2667 Ant. pol. : HORIZONTAL  
 Limit : FCC PART 15C PEAK  
 Env. / Ins. : Temp:19.5°C;Humi:50%;Press:101.55kPa  
 Engineer : Aron  
 EUT : Portable Bluetooth Party Speaker  
 Power : DC 7.4V From Battery  
 M/N : Vegas  
 Test Mode : GFSK 1Mbps TX 2480MHz  
 32889

	Freq. (MHz)	Ant. Factor (dB/m)	Cable Loss (dB)	Amp Factor (dB)	Reading (dBuV)	Emission Level (dBuV/m)	Limits (dBuV/m)	Margin (dB)	Remark
1	2480.28	28.20	4.99	44.04	100.83	89.98	74.00	-15.98	Peak
2	2483.50	28.20	4.99	44.04	58.48	47.63	74.00	26.37	Peak

Remarks: 1. Emission Level= Antenna Factor + Cable Loss - Amp Factor + Reading.  
 2. Margin= Limit - Emission Level.  
 3. The emission levels that are 20dB below the official limit are not reported.

Note: All channels had been pre-test, only of the worst case channels were reported.

## 9.AC POWER LINE CONDUCTED EMISSIONS

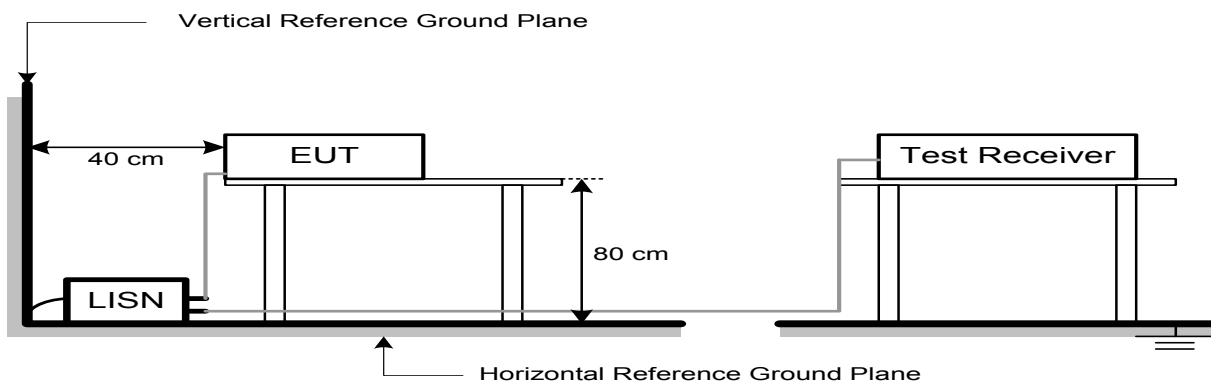
### 9.1.Limit

Frequency			Maximum RF Line Voltage	
			Quasi-Peak Level dB( $\mu$ V)	Average Level dB( $\mu$ V)
150kHz	~	500kHz	66 ~ 56*	56 ~ 46*
500kHz	~	5MHz	56	46
5MHz	~	30MHz	60	50

Note:

- \* Decreasing linearly with logarithm of frequency.
- The lower limit shall apply at the transition frequencies.

### 9.2.Test Setup



### 9.3.Spectrum Analyzer Setting

Spectrum Parameters	Setting
RBW	9KHz
VBW	9KHz
Start frequency	150KHz
Stop frequency	30MHz
Sweep Time	Auto
Detector	QP/AVG
Trace Mode	Max Hold

### 9.4.Test Procedure

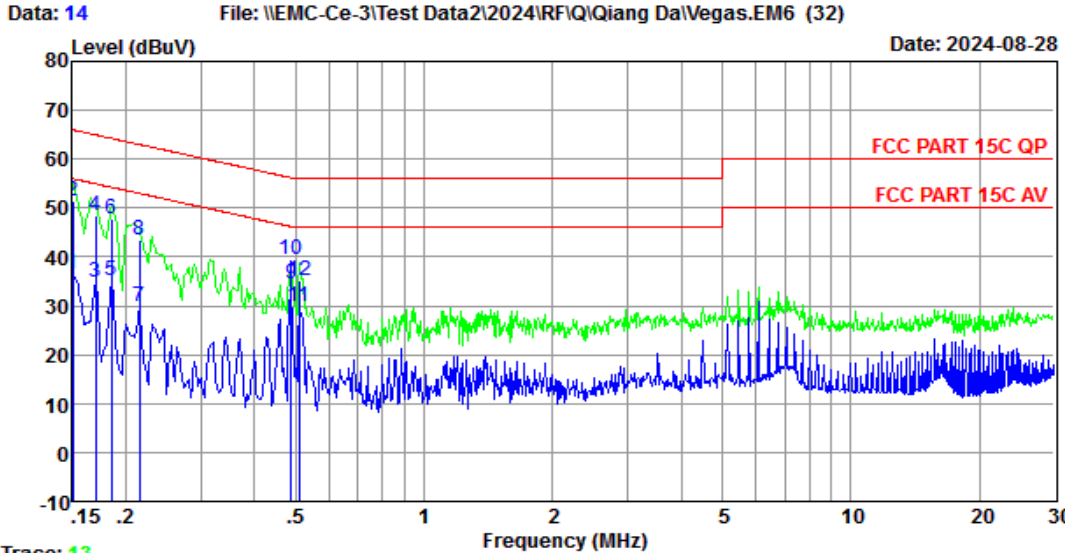
- The EUT was placed on a non-metallic table, 80cm above the ground plane.
- The EUT Power connected to the power mains through a line impedance stabilization network.
- Provides a 50 ohm coupling impedance for the EUT (Please refer the block diagram of the test setup and photographs).
- Set the EUT transmit continuously with maximum output power.

- e. Spectrum analyzer setting parameters in accordance with section 9.3.
- f. The AC line are checked to find out the maximum conducted emission. In order to find the maximum emission levels, the relative positions of equipment and all of the interface cables shall be changed according to ANSI C63.10: 2013 on Conducted Emission Test.
- g. Record the results in the test report.

## 9.5. Test Result

EST Technology

Chilingxiang, Qishantou, Santun,  
Houjie, Dongguan, Guangdong, China  
Tel:+86-769-83081888  
Fax:+86-769-83081878



Trace: 13  
 Site no : 3#CE Shield Room Data no. : 14  
 Env. / Ins. : Temp:25.2℃;Humi:52%;Press:101.1kPa LINE Phase : NEUTRAL  
 Limit : FCC PART 15C QP  
 Engineer : Wind  
 EUT : Portable Bluetooth Party Speaker  
 Power : AC 120V/60Hz  
 M/N : Vegas  
 Test Mode : TX Mode  
 32889

	Freq. (MHz)	LISN Factor (db)	Cable Loss (db)	Reading (dBuV)	Emission Level (dBuV)	Limits (dBuV)	Margin (dB)	Remark
1	0.15	9.99	9.82	16.80	36.61	56.00	19.39	Average
2	0.15	9.99	9.82	31.65	51.46	66.00	14.54	QP
3	0.17	9.99	9.82	15.05	34.86	54.94	20.08	Average
4	0.17	9.99	9.82	28.51	48.32	64.94	16.62	QP
5	0.19	10.22	9.82	14.98	35.02	54.24	19.22	Average
6	0.19	10.22	9.82	27.64	47.68	64.24	16.56	QP
7	0.22	10.22	9.82	9.81	29.85	53.01	23.16	Average
8	0.22	10.22	9.82	23.43	43.47	63.01	19.54	QP
9	0.49	10.16	9.83	14.51	34.50	46.19	11.69	Average
10	0.49	10.16	9.83	19.42	39.41	56.19	16.78	QP
11	0.51	10.15	9.83	9.75	29.73	46.00	16.27	Average
12	0.51	10.15	9.83	15.24	35.22	56.00	20.78	QP

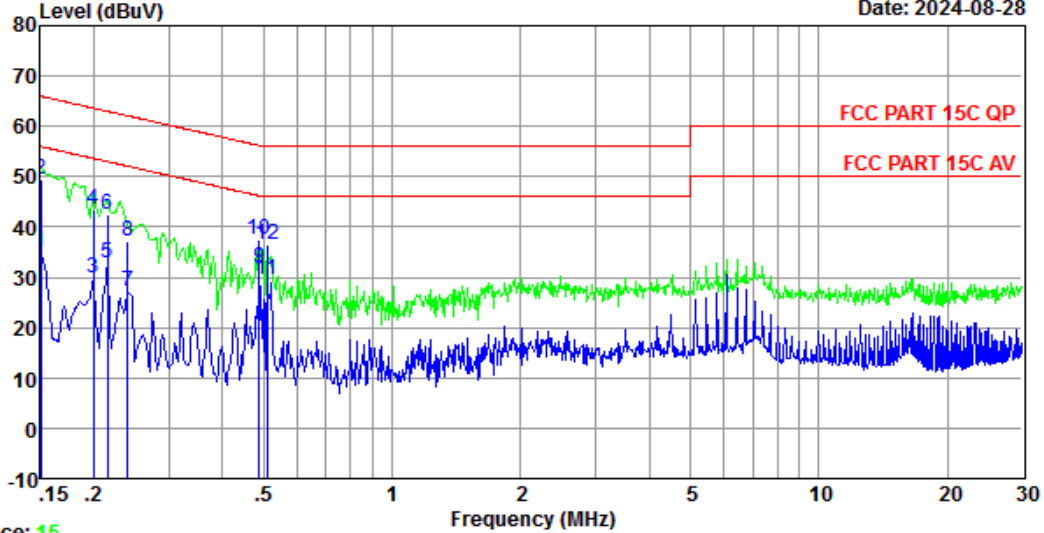
Remarks: 1. Emission Level= LISN Factor + Cable Loss + Reading.  
 2. Margin= Limit - Emission Level.  
 3. If the average limit is met when using a quasi-peak detector, the EUT shall be deemed to meet both limits and measurement with average detector is unnecessary.



# EST Technology

Chilingxiang, Qishantou, Santun,  
Houjie, Dongguan, Guangdong, China  
Tel: +86-769-83081888  
Fax: +86-769-83081878

Data: 16 File: \\EMC-Ce-3\Test Data2\2024\RF\Q\Qiang Da\Vegas.EM6 (32) Date: 2024-08-28



Trace: 15  
 Site no : 3#CE Shield Room Data no. : 16  
 Env. / Ins. : Temp:25.2°C;Humi:52%;Press:101.1kPa LINE Phase : LINE  
 Limit : FCC PART 15C QP  
 Engineer : Wind  
 EUT : Portable Bluetooth Party Speaker  
 Power : AC 120V/60Hz  
 M/N : Vegas  
 Test Mode : TX Mode  
 32889

	Freq. (MHz)	LISN Factor (db)	Cable Loss (db)	Reading (dBuV)	Emission Level (dBuV)	Limits (dBuV)	Margin (dB)	Remark
1	0.15	10.19	9.82	15.04	35.05	56.00	20.95	Average
2	0.15	10.19	9.82	29.52	49.53	66.00	16.47	QP
3	0.20	10.00	9.82	9.89	29.71	53.62	23.91	Average
4	0.20	10.00	9.82	23.63	43.45	63.62	20.17	QP
5	0.22	10.00	9.82	12.96	32.78	53.01	20.23	Average
6	0.22	10.00	9.82	22.53	42.35	63.01	20.66	QP
7	0.24	10.01	9.82	7.26	27.09	52.08	24.99	Average
8	0.24	10.01	9.82	17.32	37.15	62.08	24.93	QP
9	0.49	10.19	9.83	11.77	31.79	46.19	14.40	Average
10	0.49	10.19	9.83	17.53	37.55	56.19	18.64	QP
11	0.51	10.18	9.83	9.59	29.60	46.00	16.40	Average
12	0.51	10.18	9.83	16.47	36.48	56.00	19.52	QP

Remarks: 1. Emission Level= LISN Factor + Cable Loss + Reading.  
 2. Margin= Limit - Emission Level.  
 3. If the average limit is met when using a quasi-peak detector, the EUT shall be deemed to meet both limits and measurement with average detector is unnecessary.

## 10. ANTENNA REQUIREMENTS

### 10.1. Limit

An intentional radiator shall be designed to ensure that no antenna other than that furnished by the responsible party shall be used with the device. The use of a permanently attached antenna or of an antenna that uses a unique coupling to the intentional radiator shall be considered sufficient to comply with the provisions of this section. The manufacturer may design the unit so that a broken antenna can be replaced by the user, but the use of a standard antenna jack or electrical connector is prohibited. This requirement does not apply to carrier current devices or to devices operated under the provisions of §§15.211, 15.213, 15.217, 15.219, 15.221, or §15.236. Further, this requirement does not apply to intentional radiators that must be professionally installed, such as perimeter protection systems and some field disturbance sensors, or to other intentional radiators which, in accordance with §15.31(d), must be measured at the installation site. However, the installer shall be responsible for ensuring that the proper antenna is employed so that the limits in this part are not exceeded.

### 10.2. Test Result

The antennas used for this product is internal antenna, so compliance with antenna requirements. ( Please refer to the EUT photo for details)

## 11.APPENDIX

### Appendix A: DTS Bandwidth Test Result

TestMode	Antenna	Frequency[MHz]	DTS BW [MHz]	FL[MHz]	FH[MHz]	Limit[MHz]	Verdict
BLE_1M	Ant1	2402	0.765	2401.682	2402.447	0.5	PASS
BLE_1M	Ant1	2440	0.708	2439.691	2440.399	0.5	PASS
BLE_1M	Ant1	2480	0.807	2479.661	2480.468	0.5	PASS

Test Graphs

BLE 1M-Ant1-2402-PASS



BLE 1M-Ant1-2440-PASS



BLE 1M-Ant1-2480-PASS



Appendix B: Maximum conducted output power  
Test Result Peak

TestMode	Antenna	Frequency[MHz]	Conducted Peak Power[dBm]	Conducted Limit[dBm]	Verdict
BLE_1M	Ant1	2402	6.16	≤30	PASS
BLE_1M	Ant1	2440	5.03	≤30	PASS
BLE_1M	Ant1	2480	3.79	≤30	PASS



## Test Graphs Peak

## BLE 1M-Ant1-2402-PASS



## BLE 1M-Ant1-2440-PASS



## BLE 1M-Ant1-2480-PASS



## Appendix C: Maximum power spectral density

## Test Result

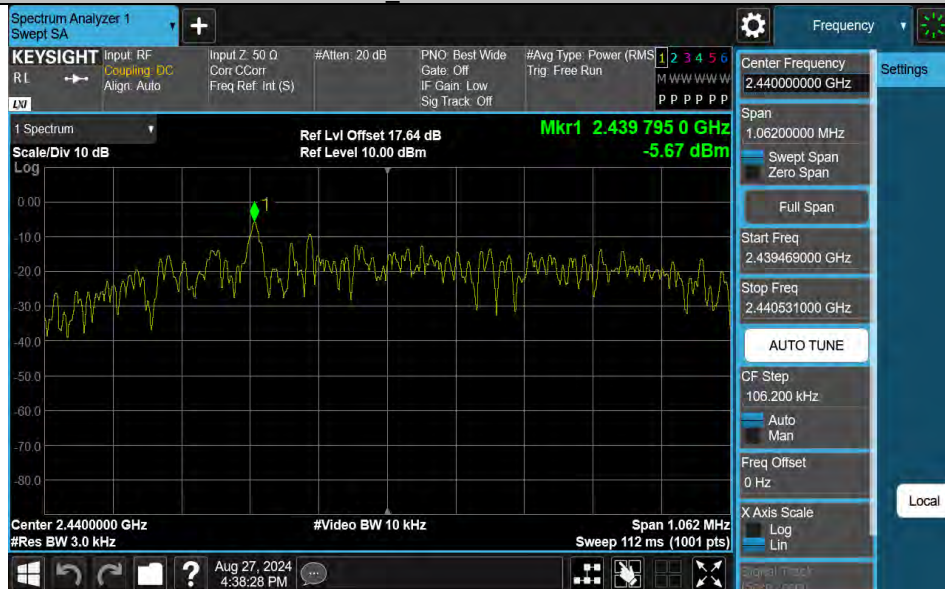
TestMode	Antenna	Frequency[MHz]	Result[dBm/3kHz]	Limit[dBm/3kHz]	Verdict
BLE_1M	Ant1	2402	-4.51	≤8.00	PASS
BLE_1M	Ant1	2440	-5.67	≤8.00	PASS
BLE_1M	Ant1	2480	-6.98	≤8.00	PASS

## Test Graphs

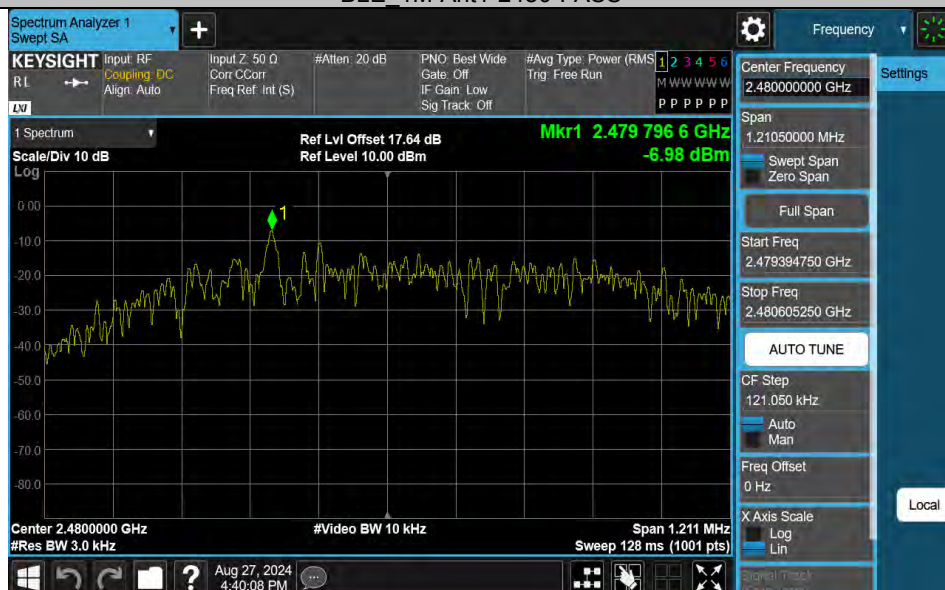
## BLE 1M-Ant1-2402-PASS



## BLE 1M-Ant1-2440-PASS



## BLE 1M-Ant1-2480-PASS





## Appendix D: Reference level measurement

## Test Result

TestMode	Antenna	Freq(MHz)	Max.Point[MHz]	Result[dBm]
BLE_1M	Ant1	2402	2401.79	6.05
BLE_1M	Ant1	2440	2439.80	4.92
BLE_1M	Ant1	2480	2479.80	3.58

### Test Graphs

#### BLE 1M-Ant1-2402-PASS



#### BLE 1M-Ant1-2440-PASS



#### BLE 1M-Ant1-2480-PASS

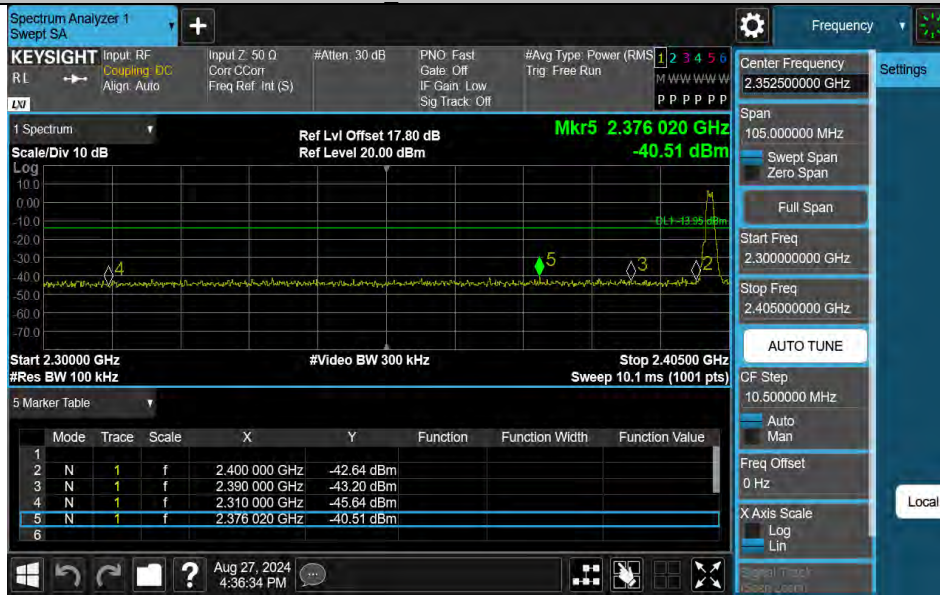


## Appendix E: Band edge measurements Test Result

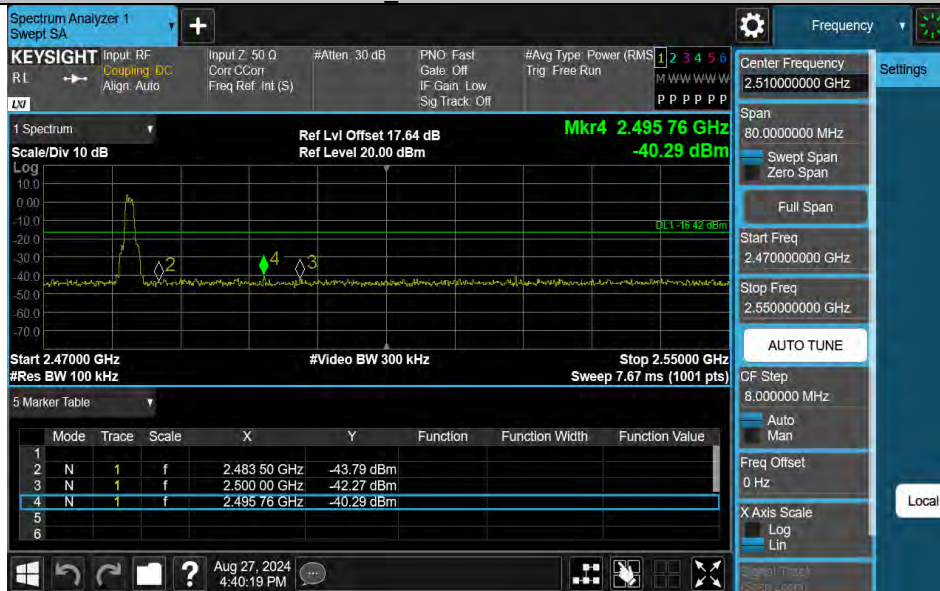
TestMode	Antenna	ChName	Frequency[MHz]	RefLevel[dBm]	Result[dBm]	Limit[dBm]	Verdict
BLE_1M	Ant1	Low	2402	6.05	-40.51	$\leq -13.95$	PASS
BLE_1M	Ant1	High	2480	3.58	-40.29	$\leq -16.42$	PASS

### Test Graphs

BLE 1M-Ant1-2402-PASS



BLE 1M-Ant1-2480-PASS



## Appendix F: Conducted Spurious Emission Test Result

TestMode	Antenna	Frequency[MHz]	FreqRange [MHz]	RefLevel [dBm]	Result[dBm]	Limit[dBm]	Verdict
BLE_1M	Ant1	2402	30~26500	6.05	-42.99	≤-13.95	PASS
BLE_1M	Ant1	2440	30~26500	4.92	-43.52	≤-15.08	PASS
BLE_1M	Ant1	2480	30~26500	3.58	-43.24	≤-16.42	PASS



Test Graphs

BLE 1M-Ant1-2402-30~26500-PASS



BLE 1M-Ant1-2440-30~26500-PASS



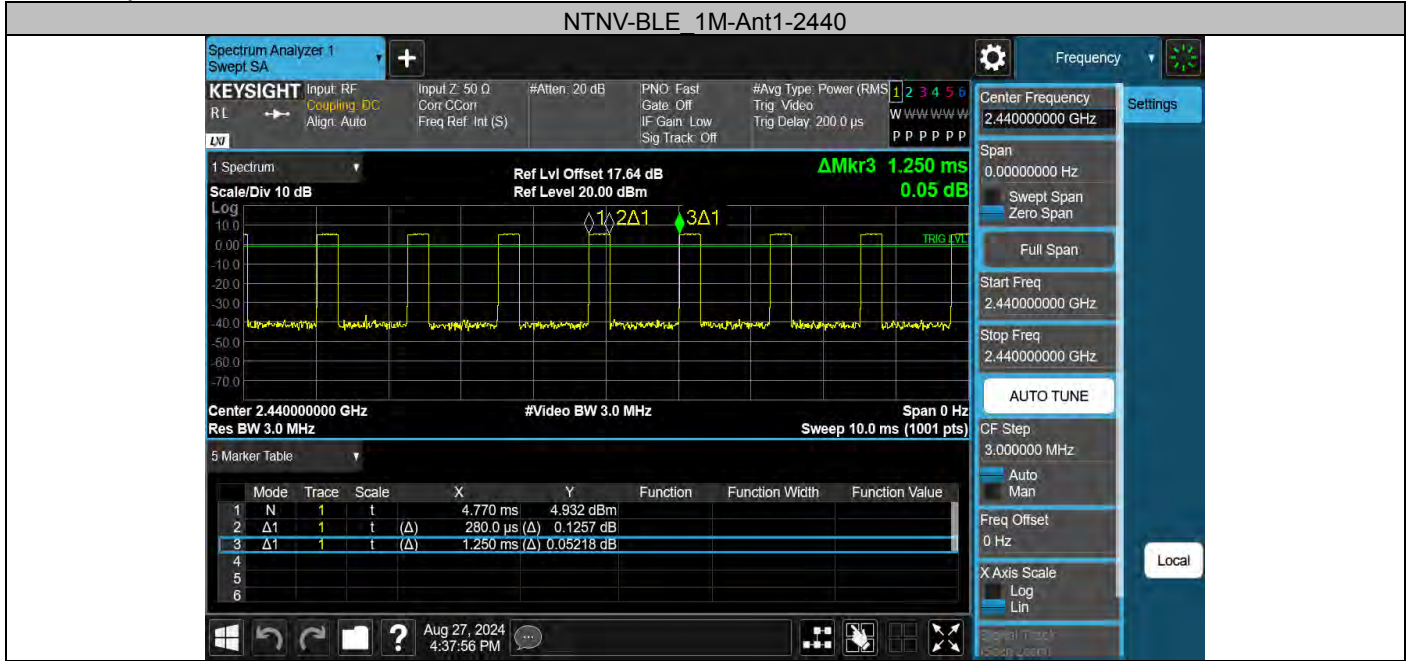
BLE 1M-Ant1-2480-30~26500-PASS



## Appendix G: Duty Cycle Test Result

TestMode	Antenna	Frequency[MHz]	ON Time [ms]	Period [ms]	Duty Cycle [%]	Duty Cycle Factor[dB]
BLE_1M	Ant1	2440	0.28	1.25	22.40	6.50

### Test Graphs



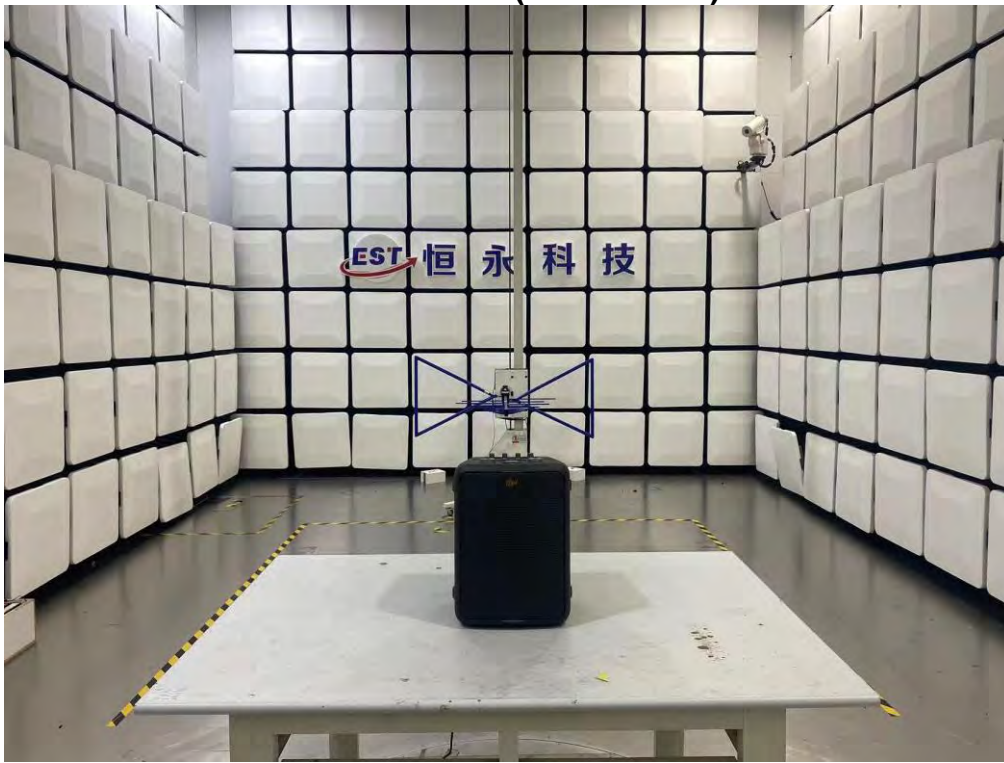


## 12. TEST SETUP PHOTO

### Conducted Test



**Radiated Test (Below 1GHz)**



**Radiated Test (Above 1GHz)**





### 13. EUT PHOTO

External Photos  
M/N: Vegas



**External Photos**

M/N: Vegas



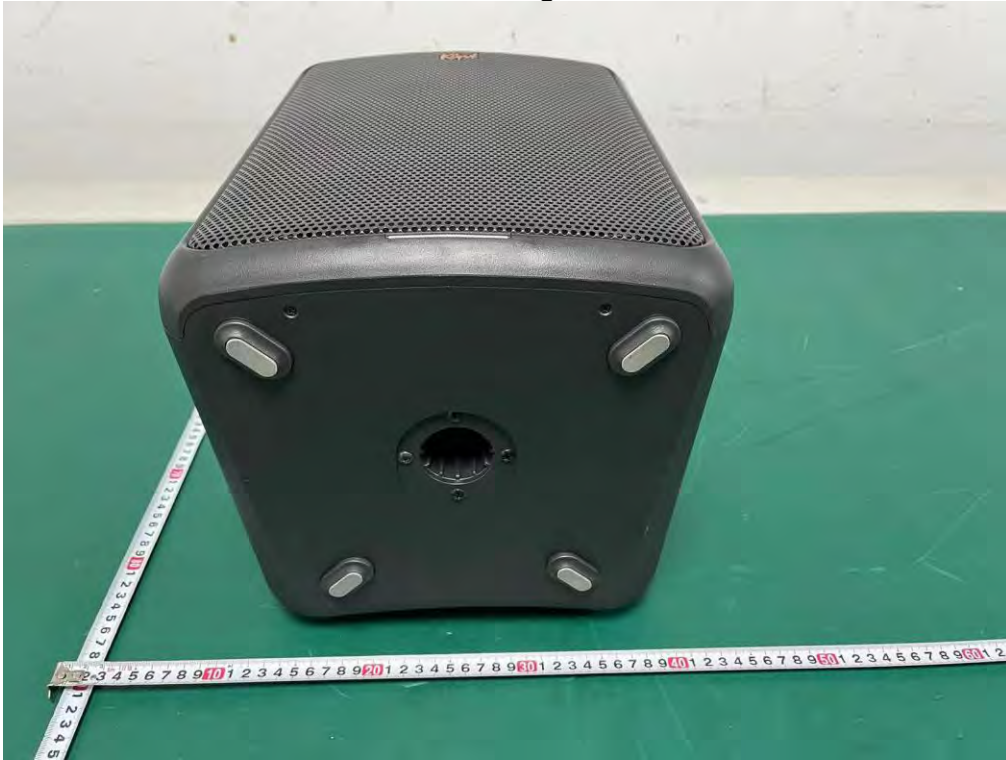
### External Photos

M/N: Vegas





**External Photos**  
M/N: Vegas



### External Photos

M/N: Vegas



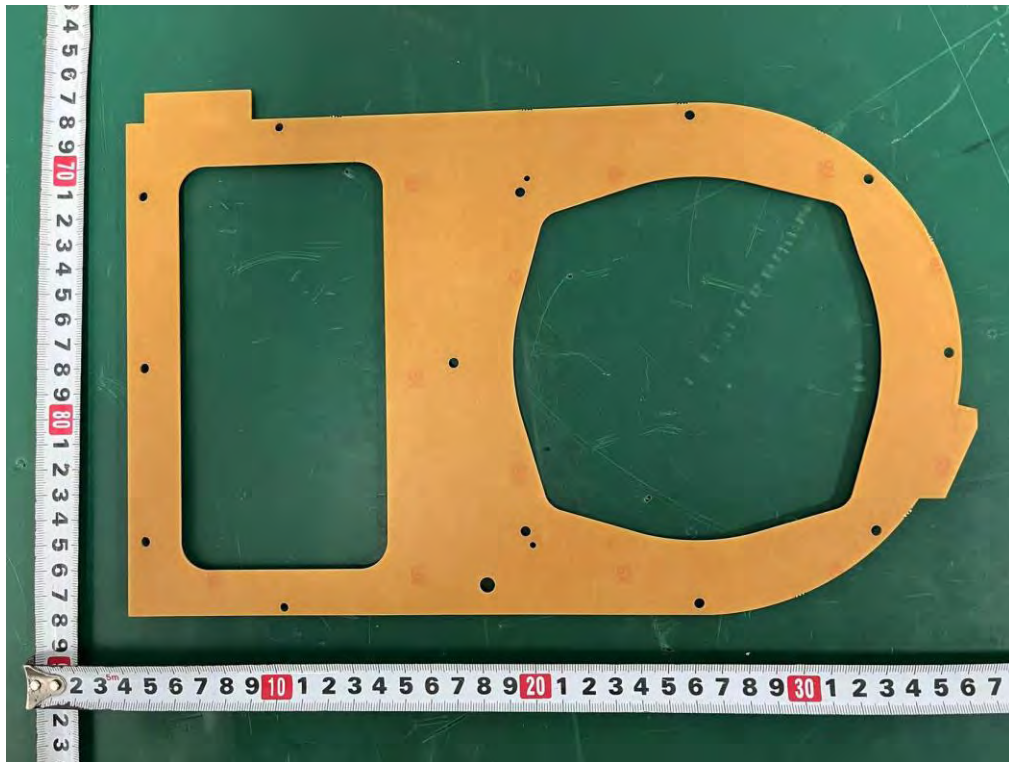


**Internal Photos**  
M/N: Vegas





### Internal Photos M/N: Vegas



### Internal Photos

M/N: Vegas





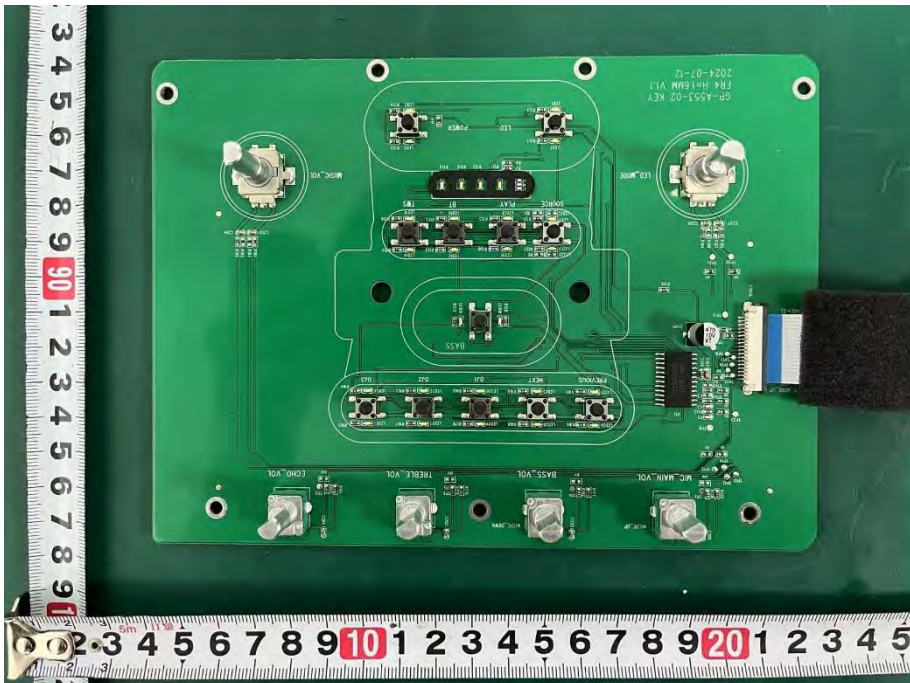
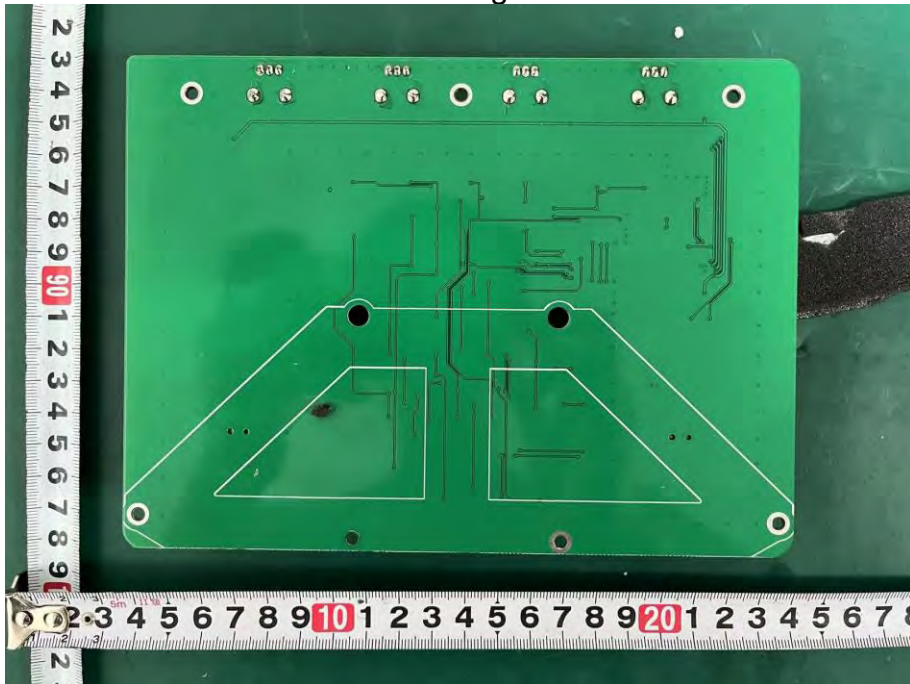
### Internal Photos

M/N: Vegas



### Internal Photos

M/N: Vegas



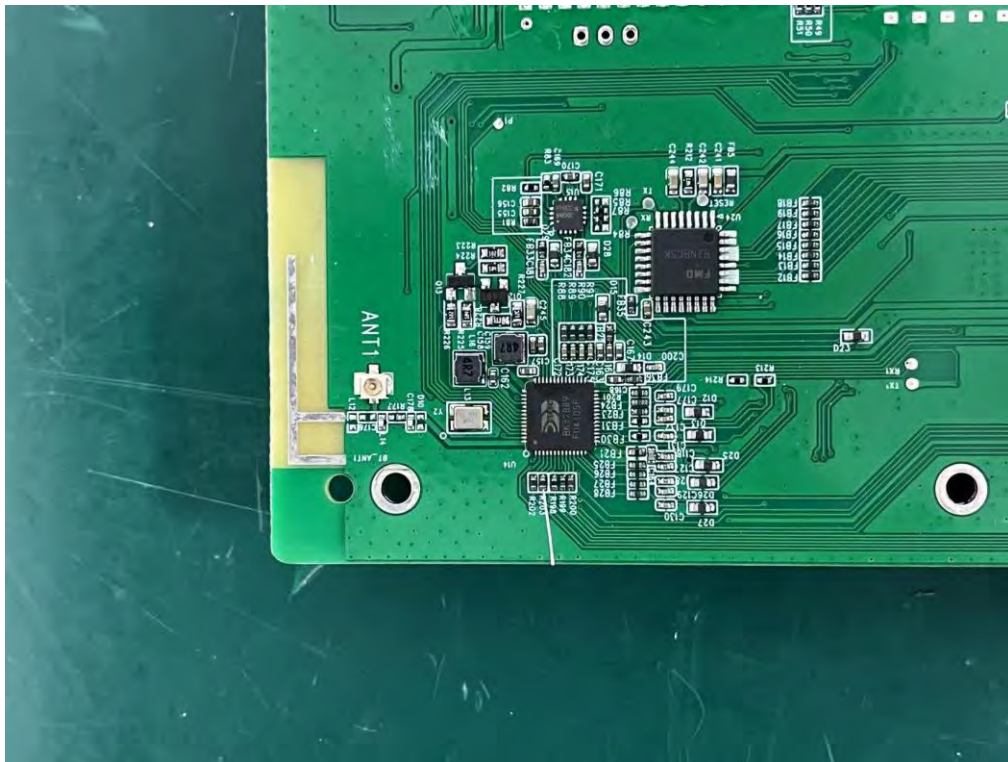
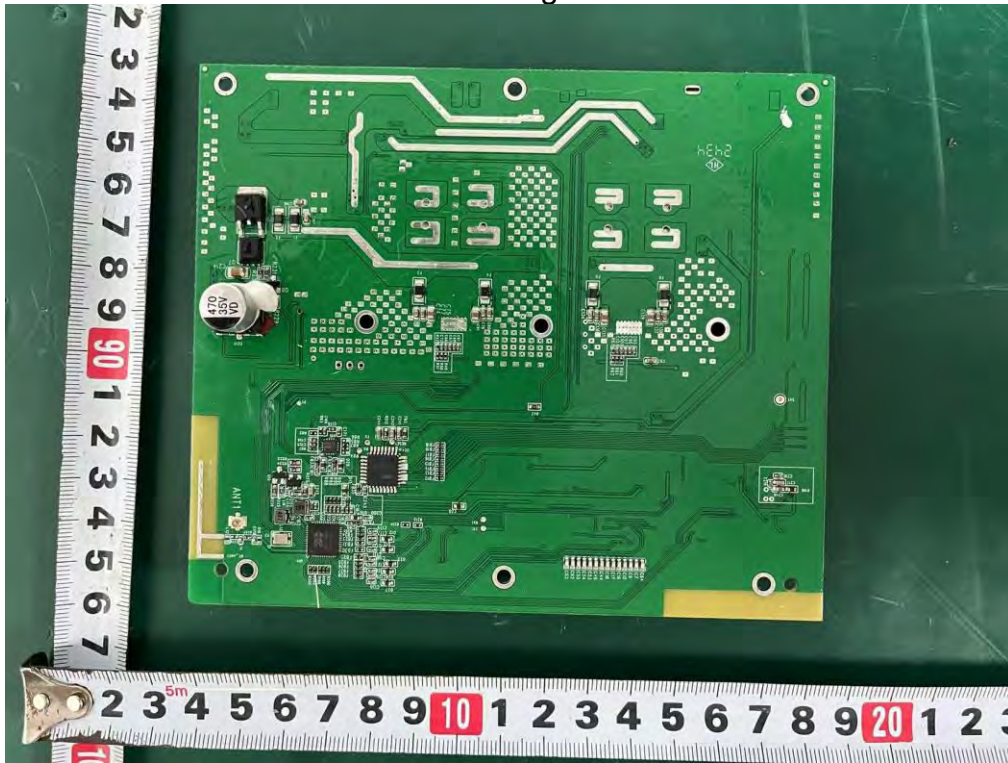


**Internal Photos**  
M/N: Vegas

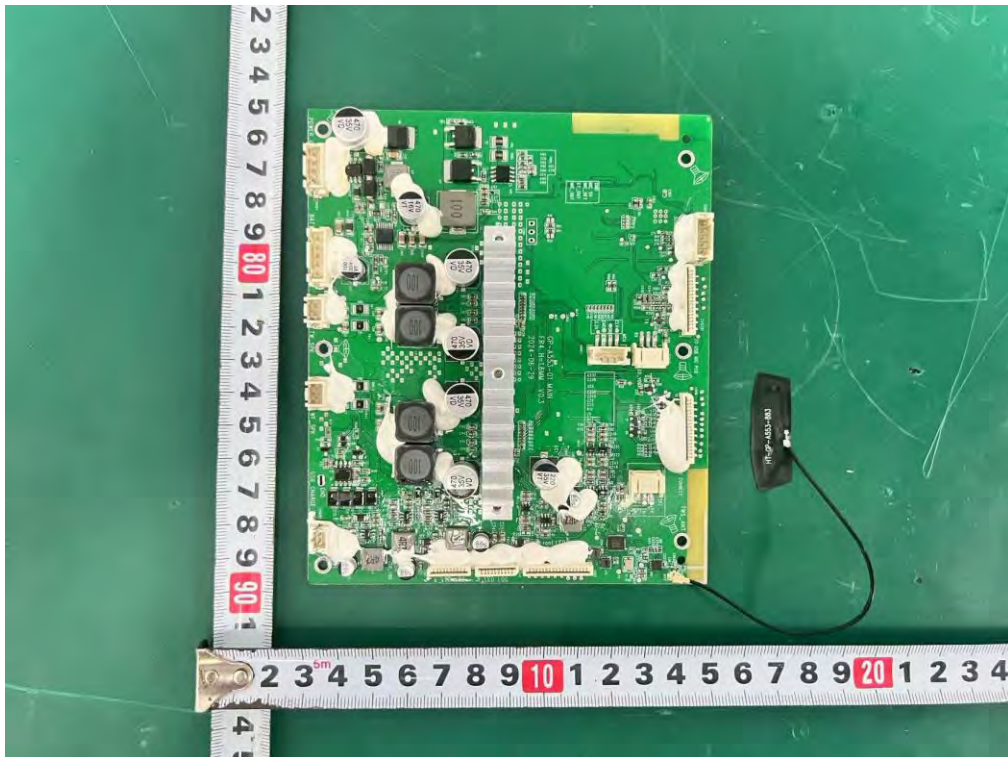
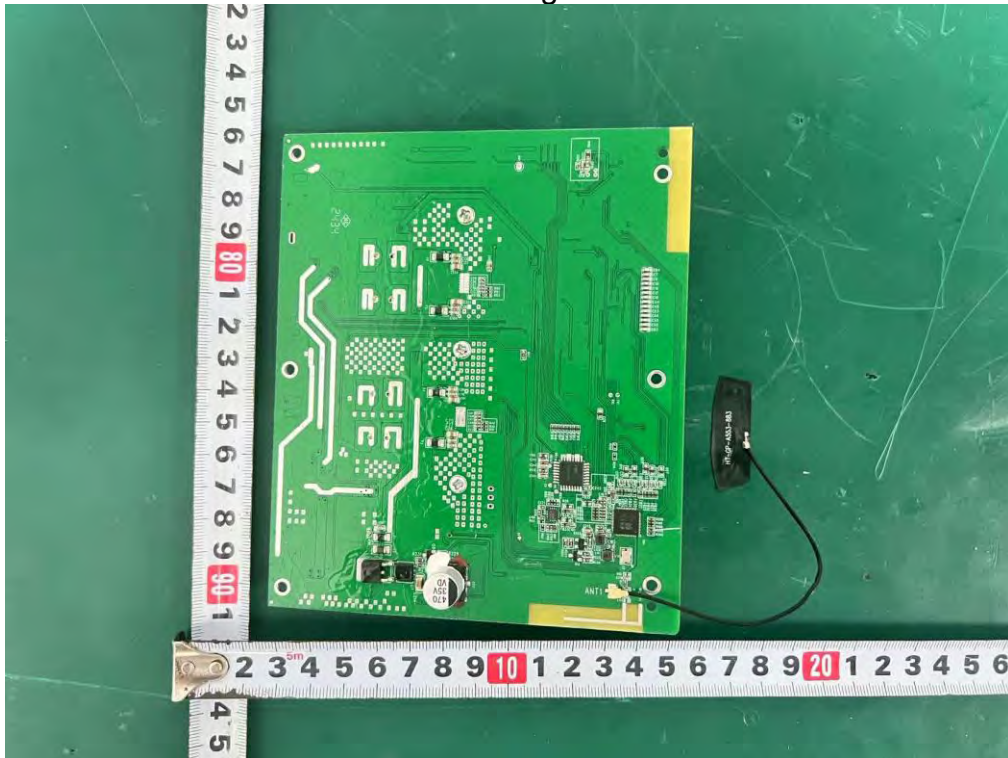




**Internal Photos**  
M/N: Vegas

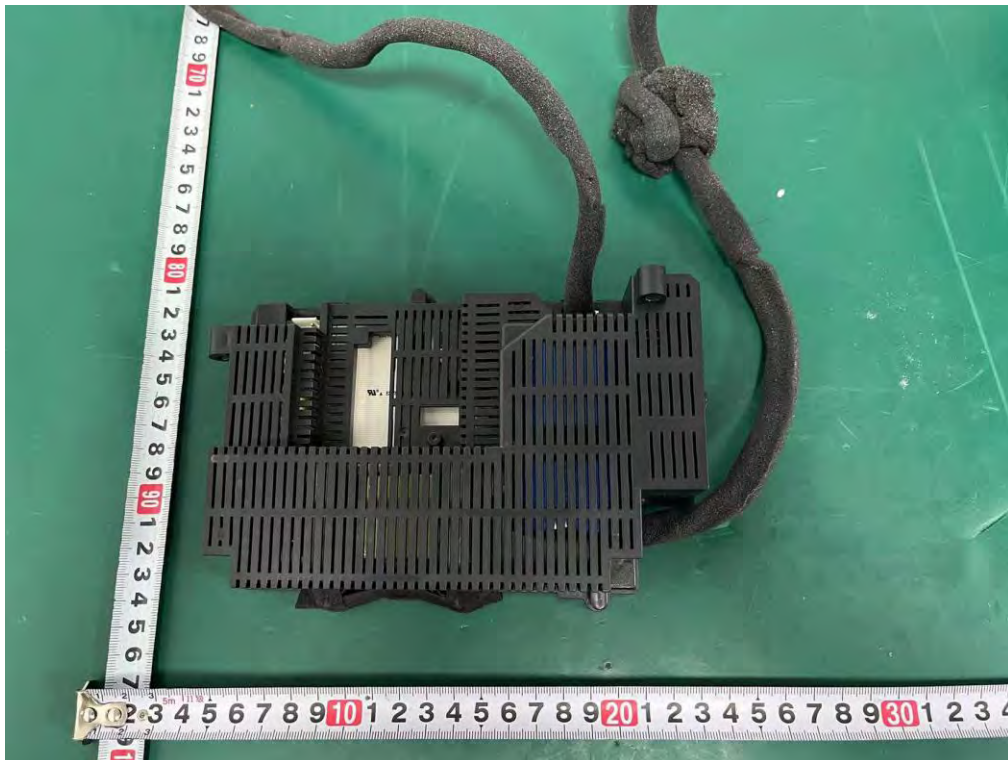
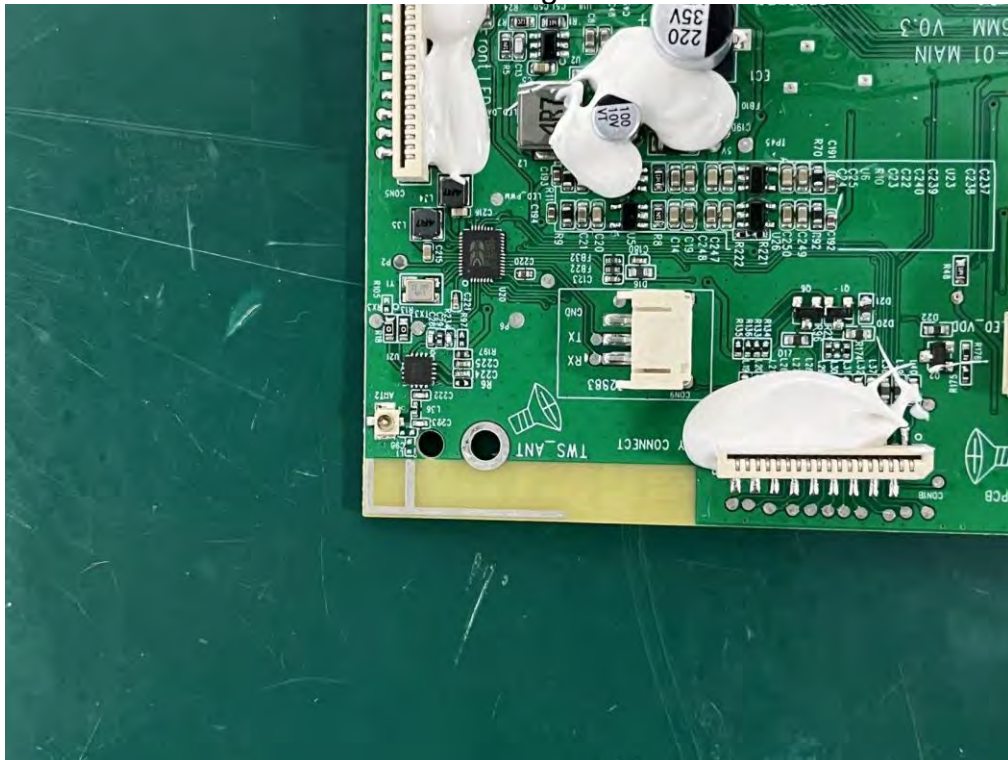


### Internal Photos M/N: Vegas



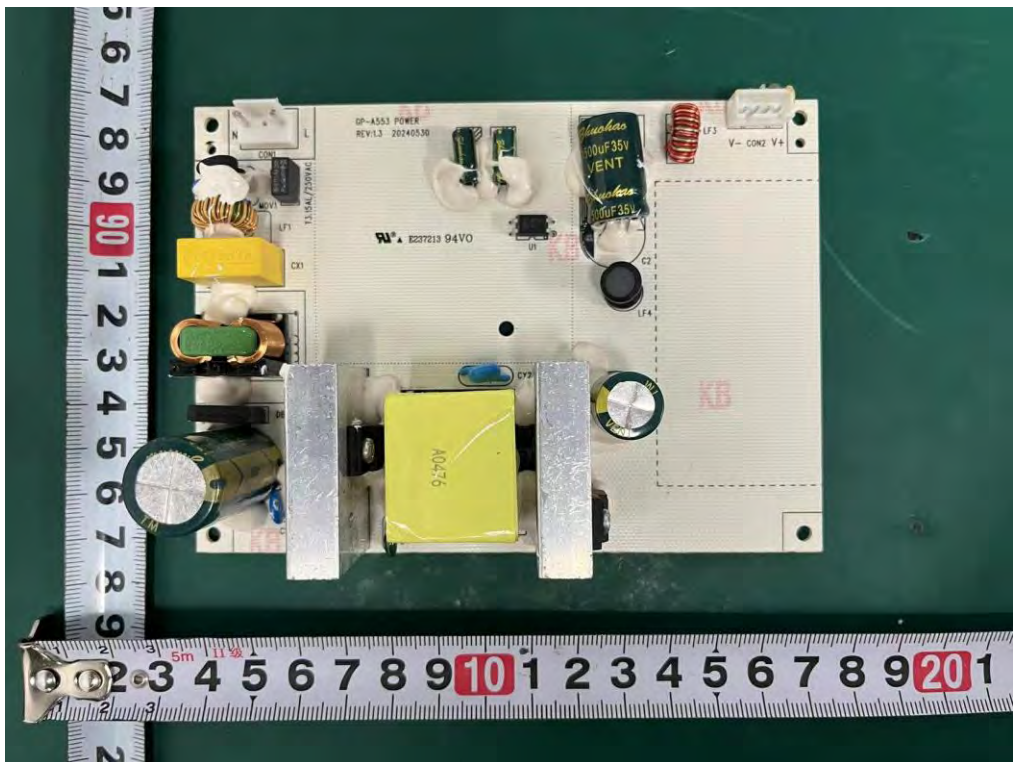
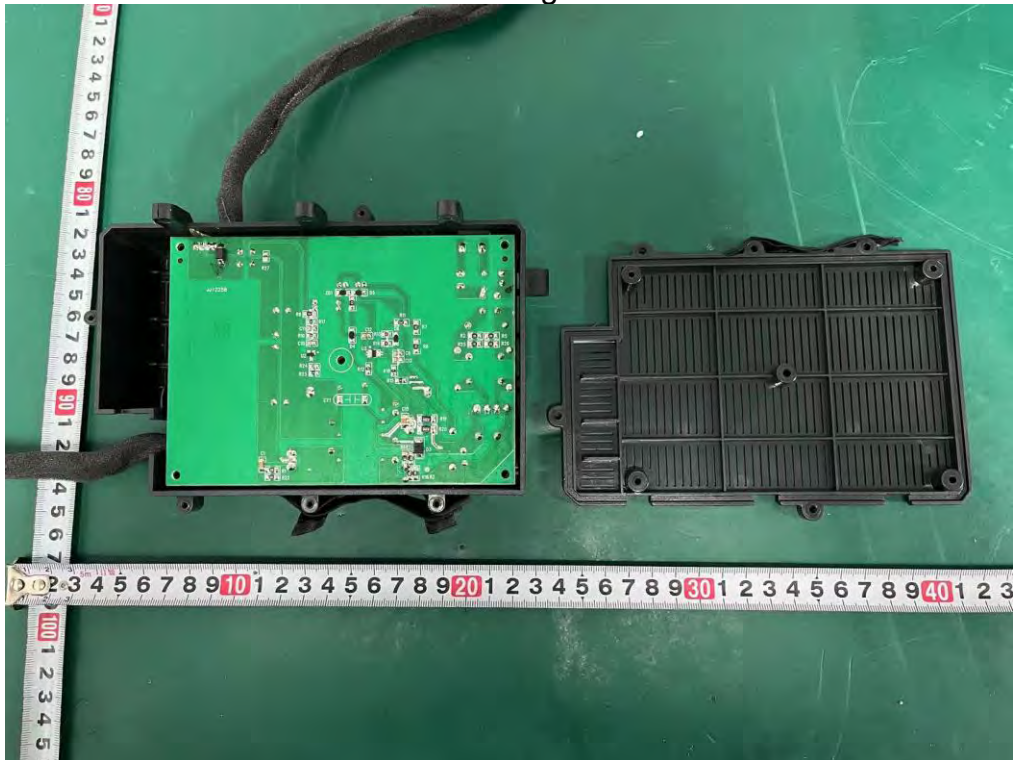


**Internal Photos**  
M/N: Vegas





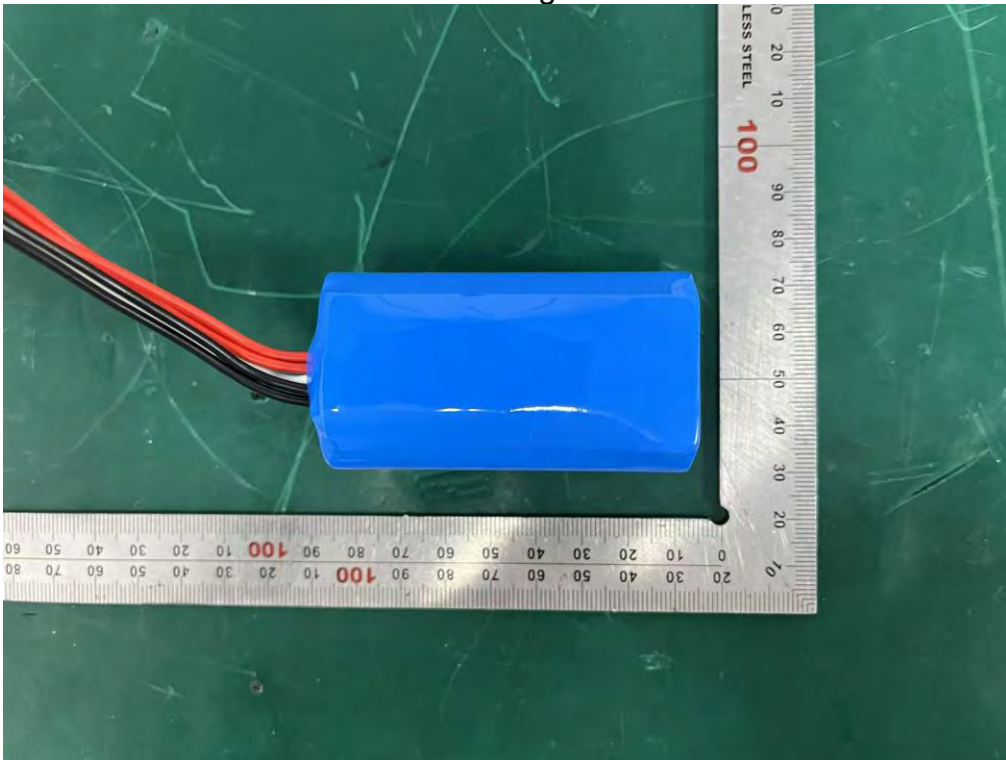
**Internal Photos**  
M/N: Vegas



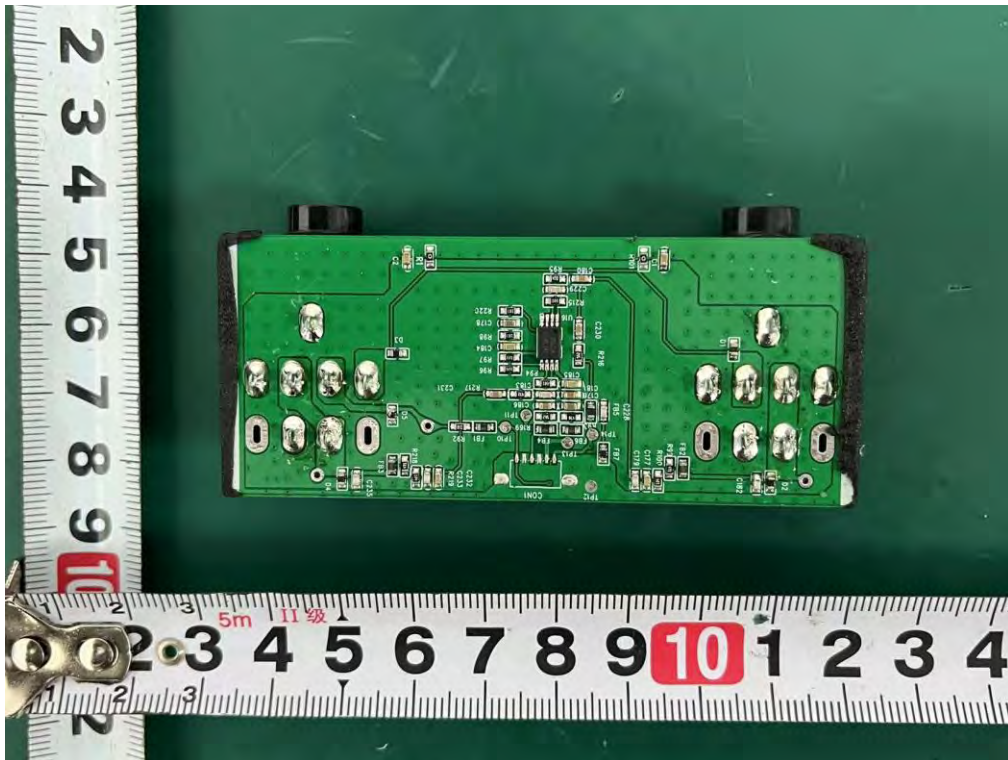
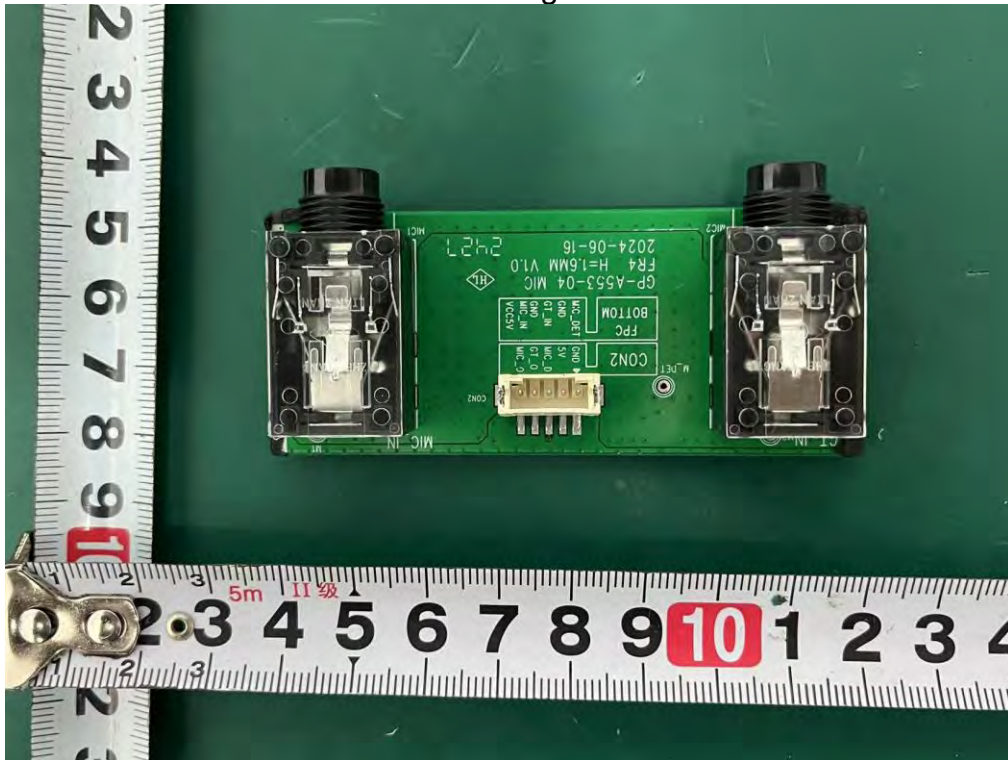




### Internal Photos M/N: Vegas



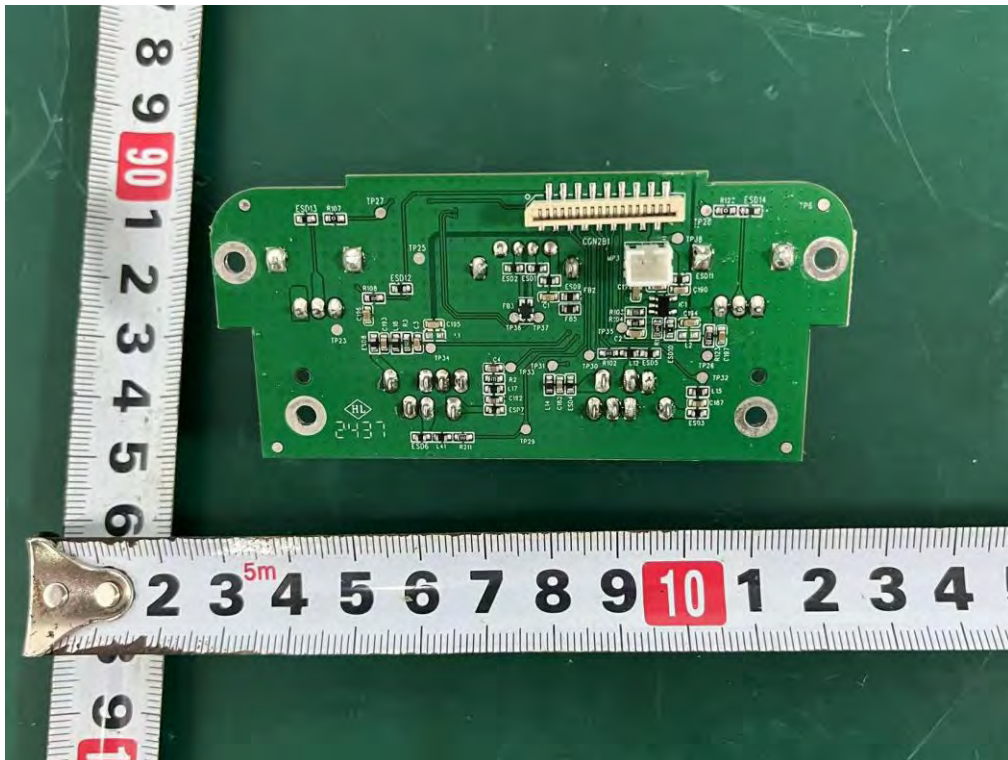
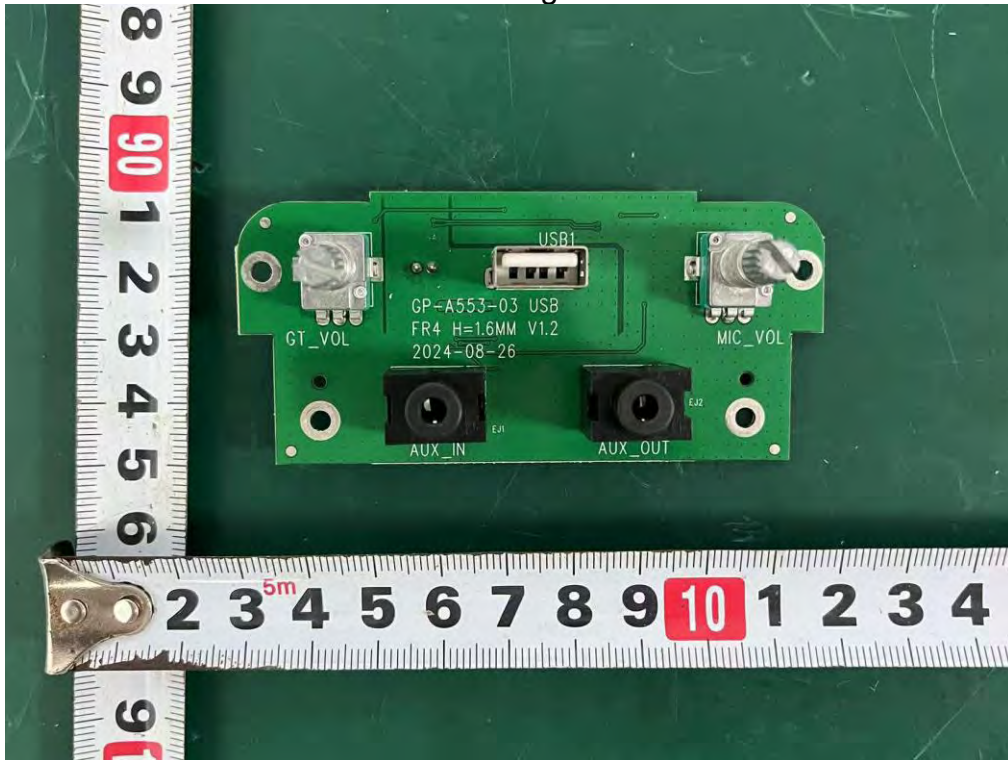
**Internal Photos**  
M/N: Vegas





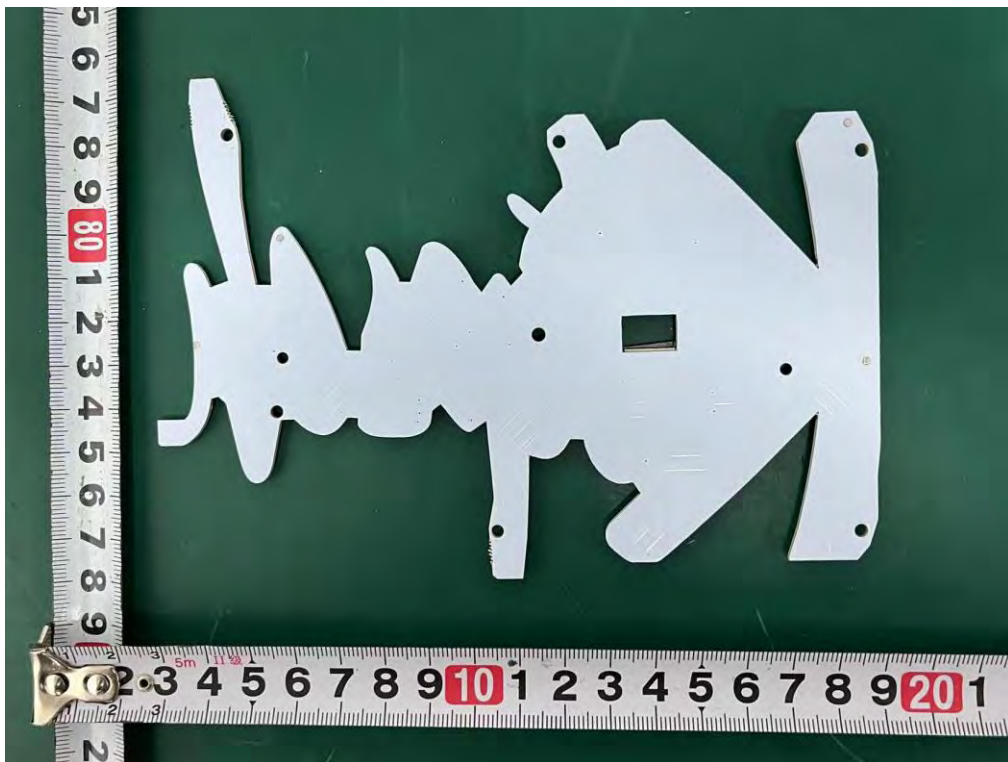
### Internal Photos

M/N: Vegas



### Internal Photos

M/N: Vegas



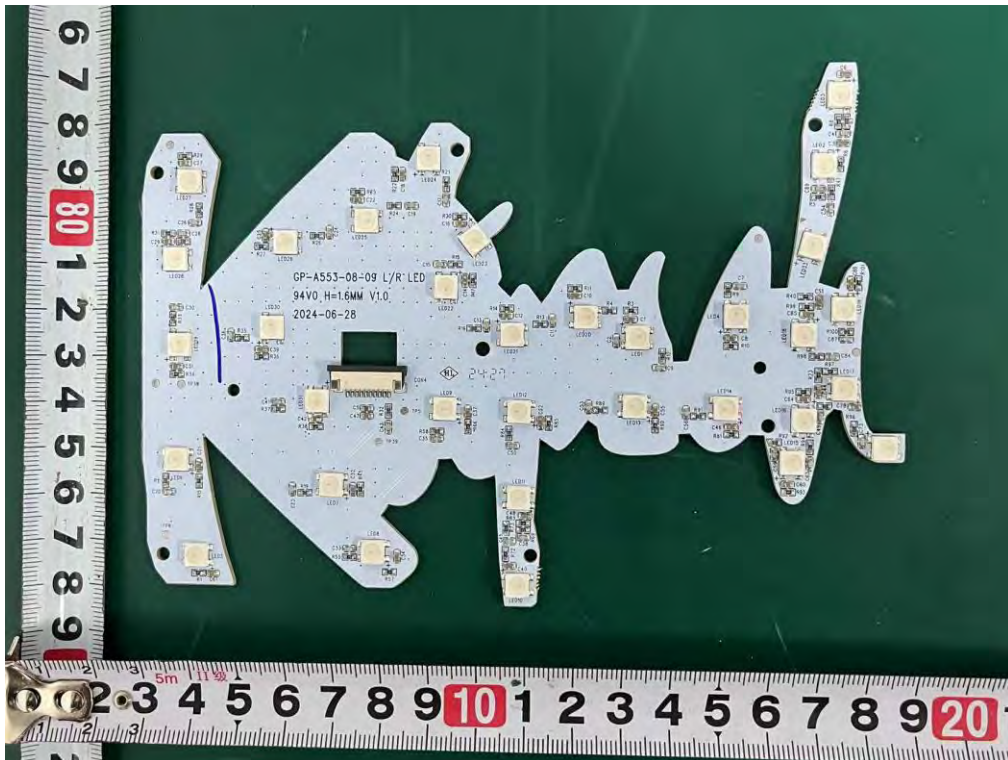


**Internal Photos**  
M/N: Vegas



### Internal Photos

M/N: Vegas



End of Test Report