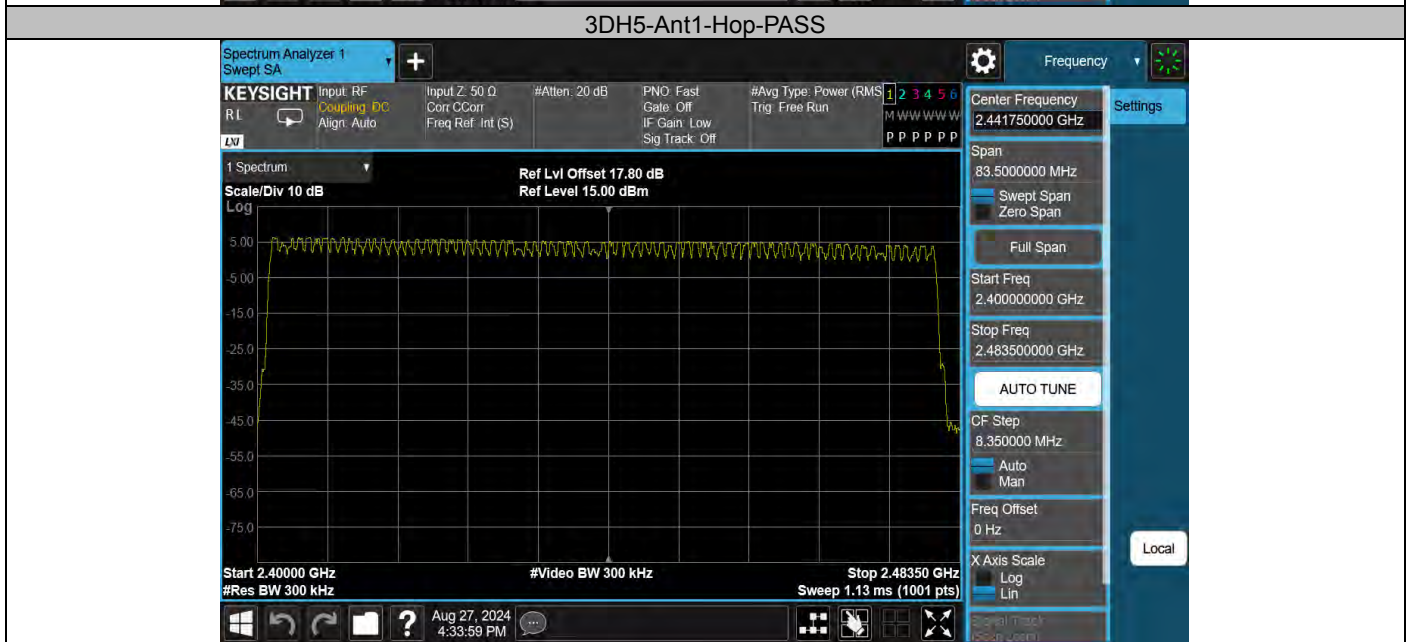
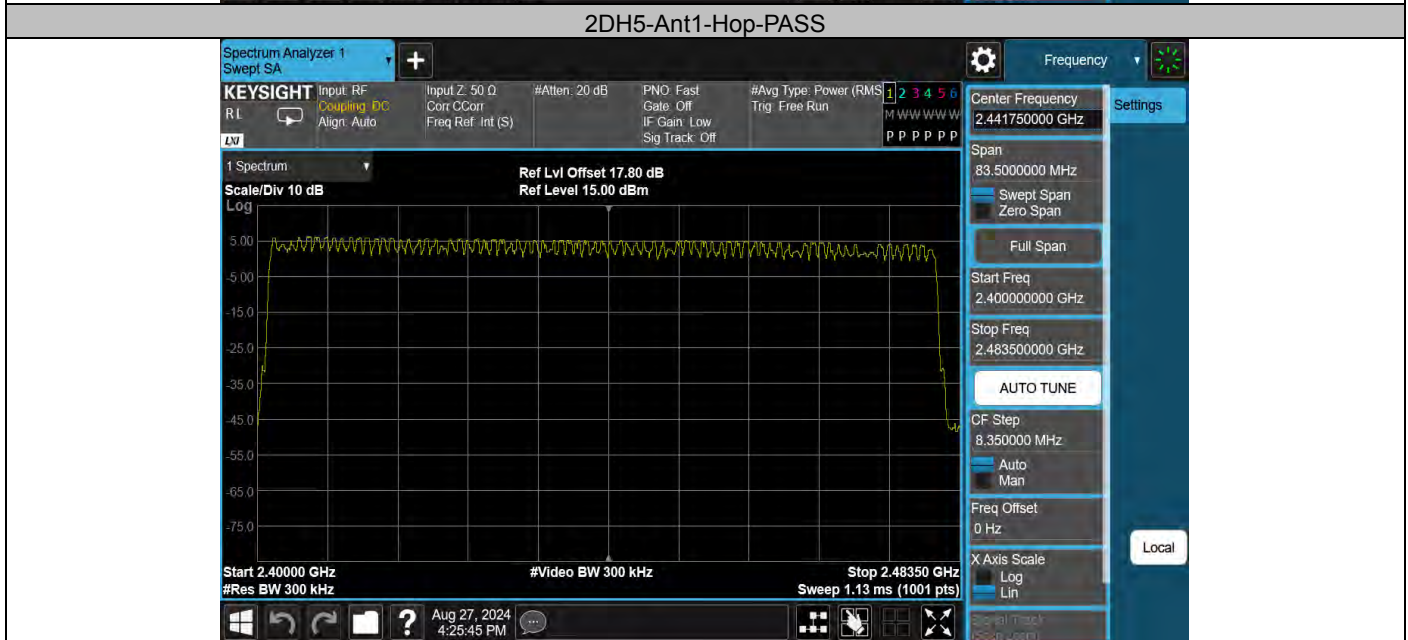
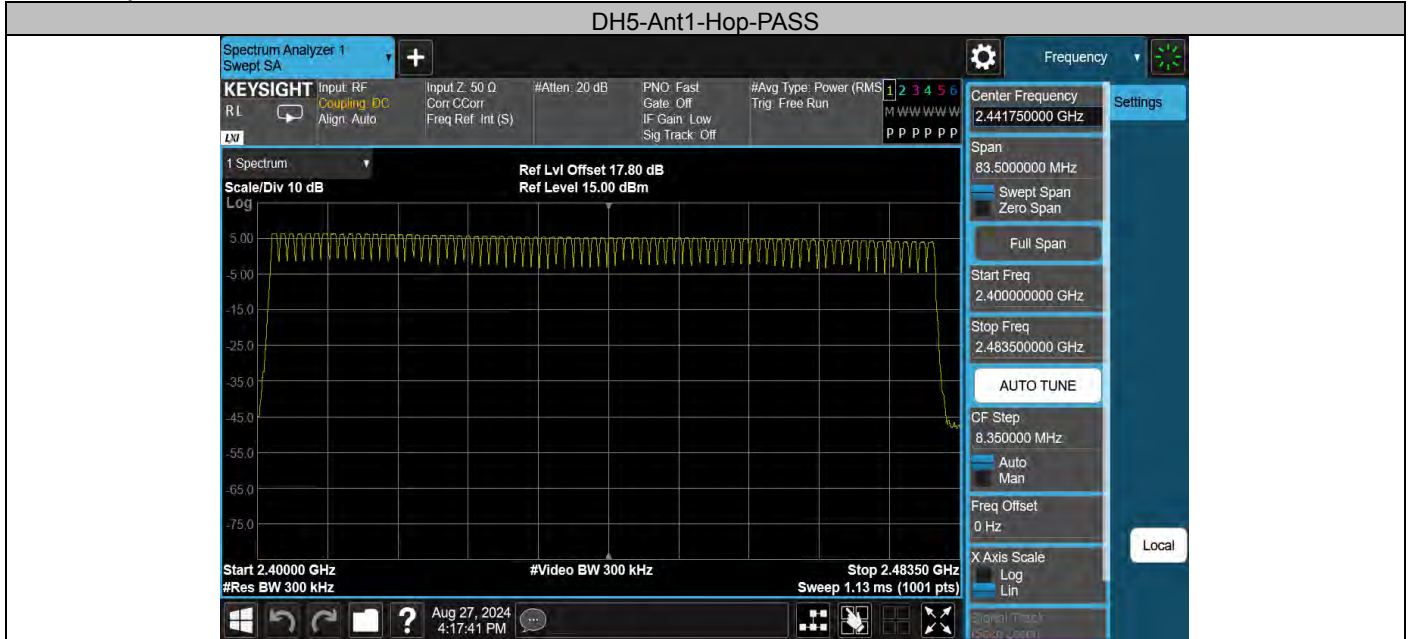


### Test Graphs



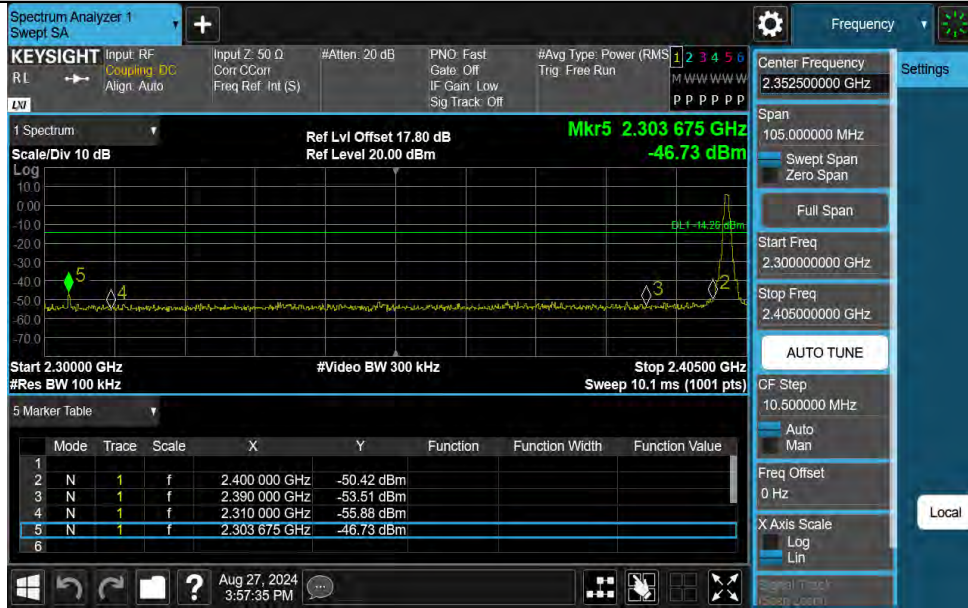
## Appendix F: Band edge measurements

## Test Result

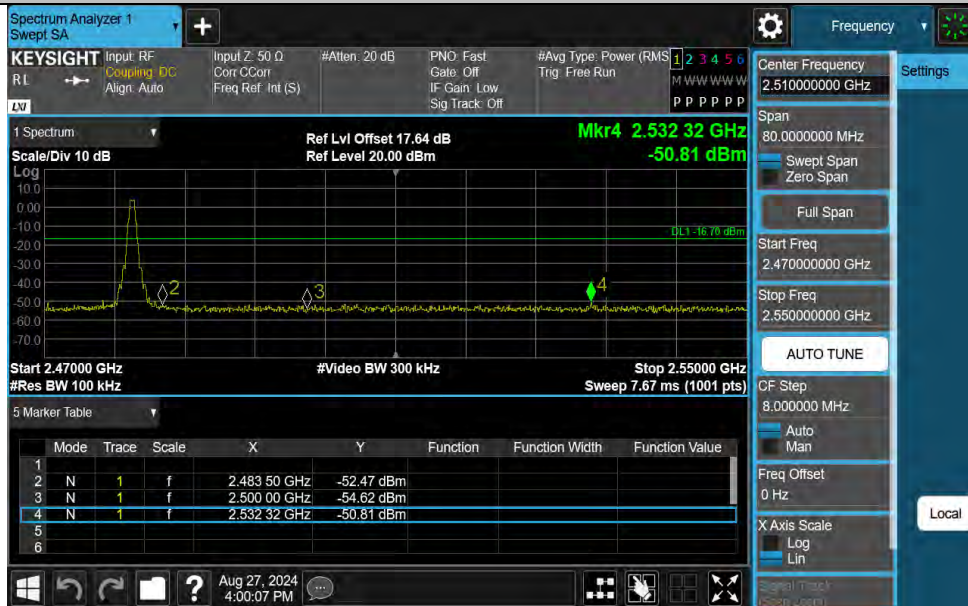
TestMode	Antenna	ChName	Frequency[MHz]	RefLevel [dBm]	Result [dBm]	Limit [dBm]	Verdict
DH5	Ant1	Low	2402	5.74	-46.73	≤-14.26	PASS
DH5	Ant1	High	2480	3.30	-50.81	≤-16.7	PASS
DH5	Ant1	Low	Hop_2402	5.61	-44.87	≤-14.39	PASS
DH5	Ant1	High	Hop_2480	3.67	-50.71	≤-16.33	PASS
2DH5	Ant1	Low	2402	5.78	-46.8	≤-14.22	PASS
2DH5	Ant1	High	2480	2.45	-50.76	≤-17.55	PASS
2DH5	Ant1	Low	Hop_2402	4.66	-45.4	≤-15.34	PASS
2DH5	Ant1	High	Hop_2480	3.81	-50.63	≤-16.19	PASS
3DH5	Ant1	Low	2402	6.02	-47.1	≤-13.98	PASS
3DH5	Ant1	High	2480	3.20	-51.29	≤-16.8	PASS
3DH5	Ant1	Low	Hop_2402	3.87	-45.43	≤-16.13	PASS
3DH5	Ant1	High	Hop_2480	3.21	-50.49	≤-16.79	PASS

### Test Graphs

#### DH5-Ant1-2402-PASS



#### DH5-Ant1-2480-PASS

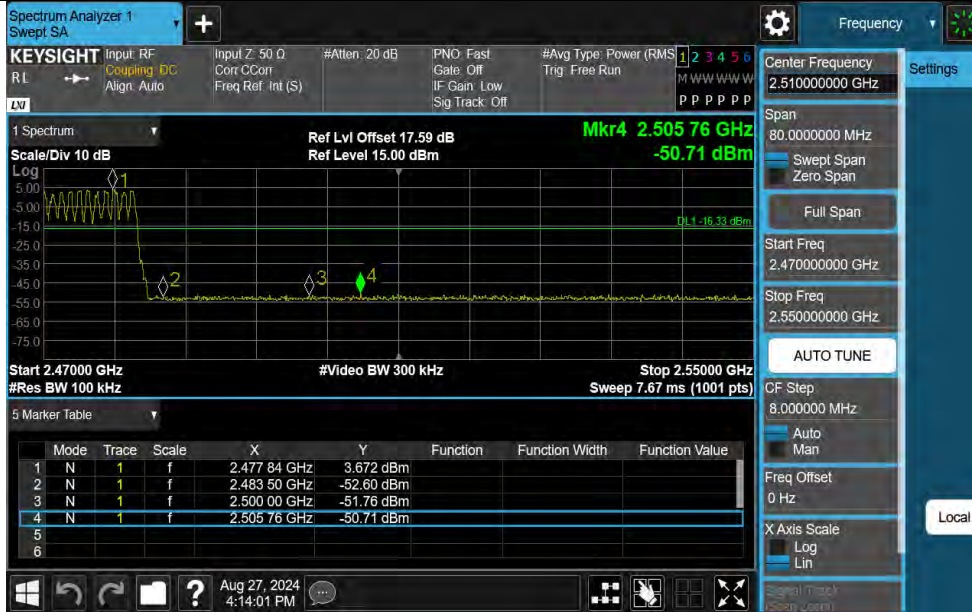


#### DH5-Ant1-Hop\_2402-PASS





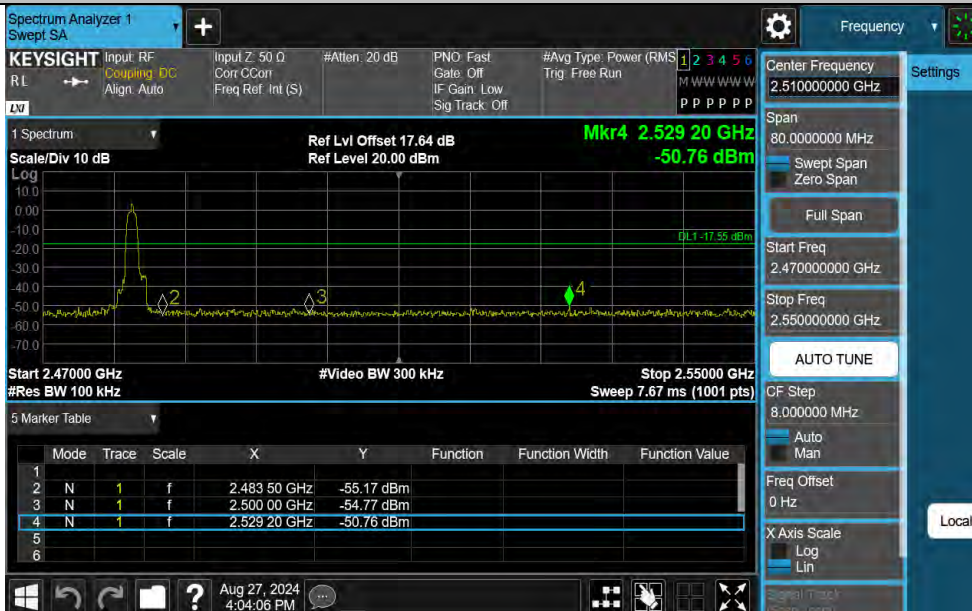
### DH5-Ant1-Hop 2480-PASS



### 2DH5-Ant1-2402-PASS



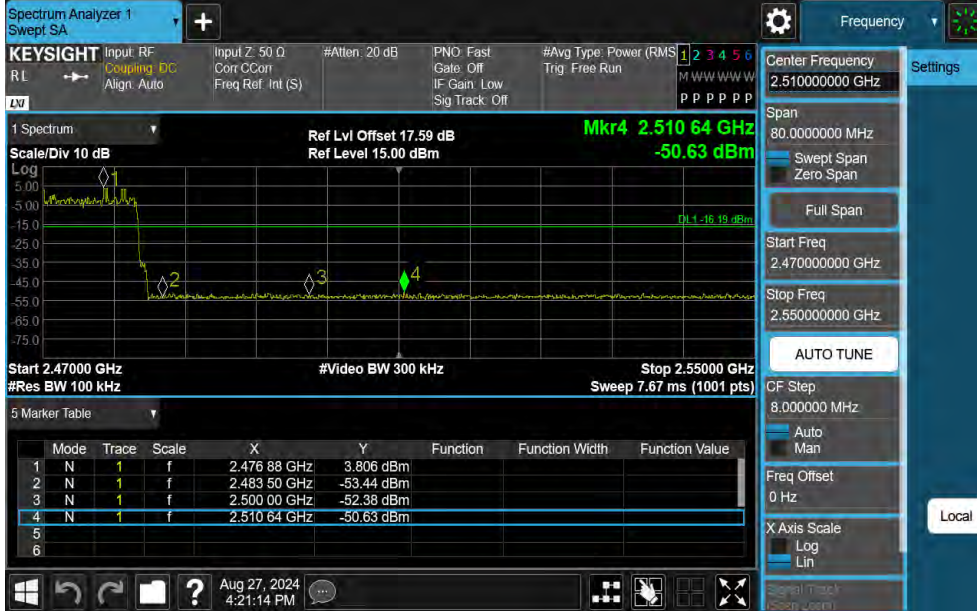
### 2DH5-Ant1-2480-PASS



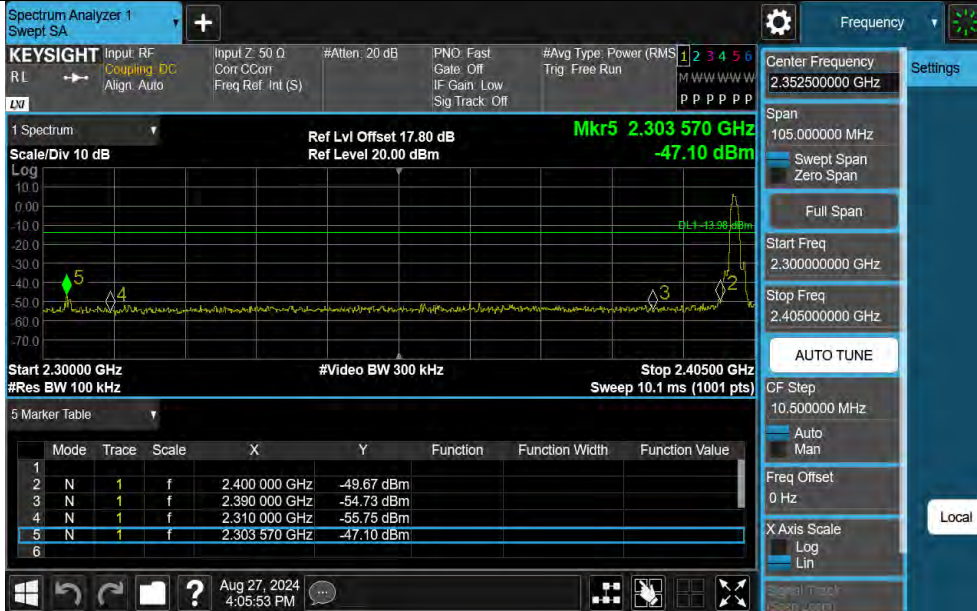
### 2DH5-Ant1-Hop 2402-PASS



### 2DH5-Ant1-Hop 2480-PASS

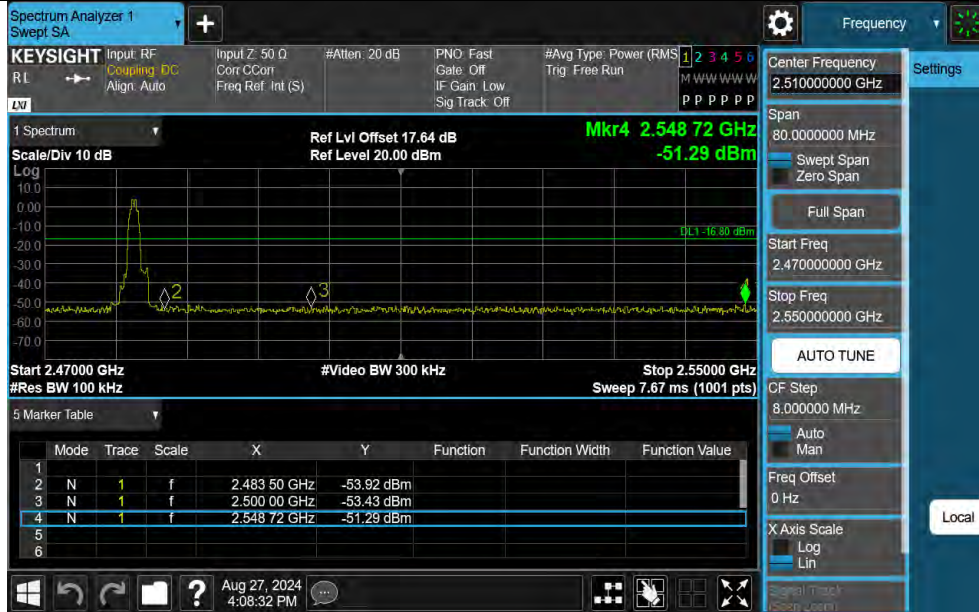


### 3DH5-Ant1-2402-PASS

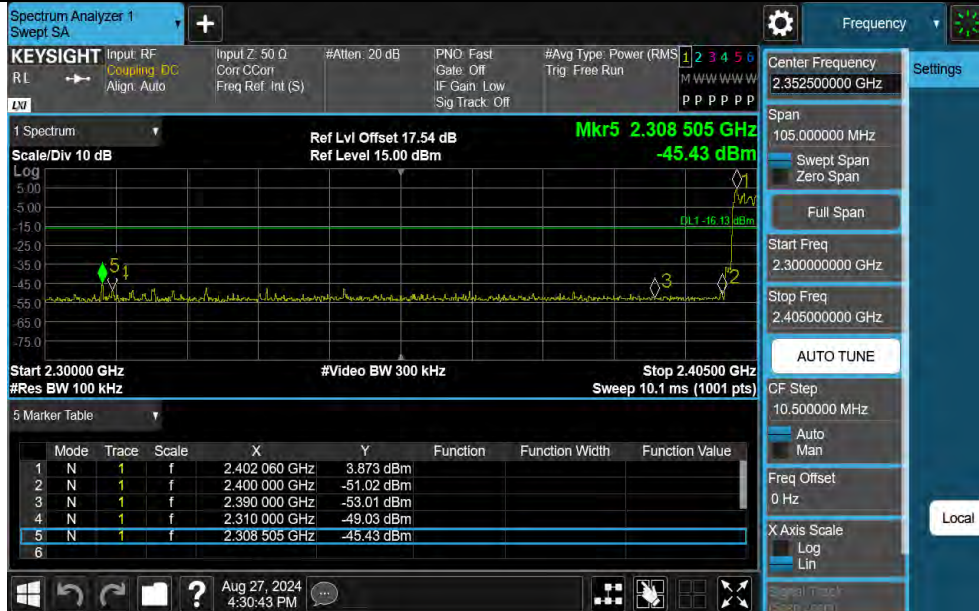




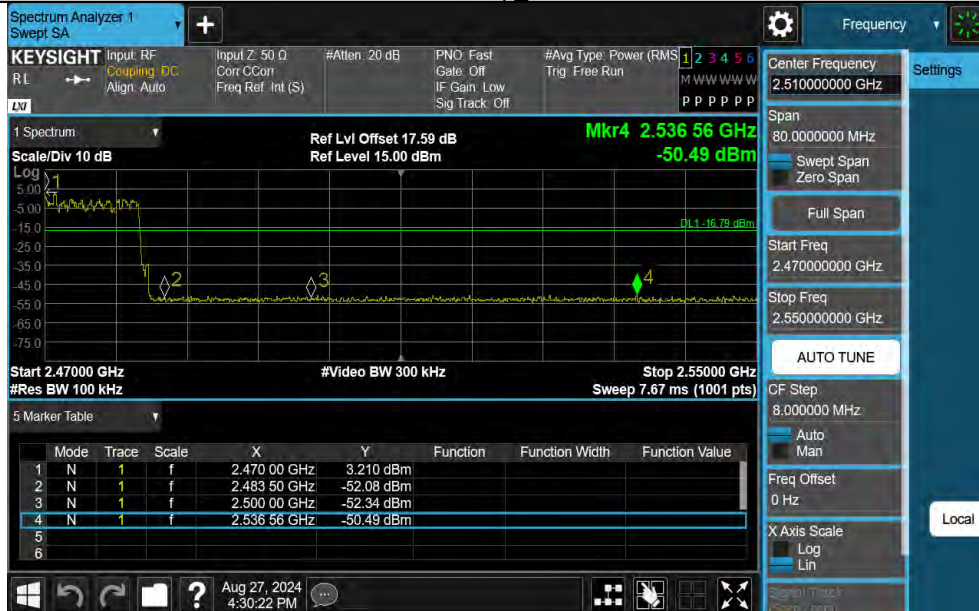
### 3DH5-Ant1-2480-PASS



### 3DH5-Ant1-Hop 2402-PASS



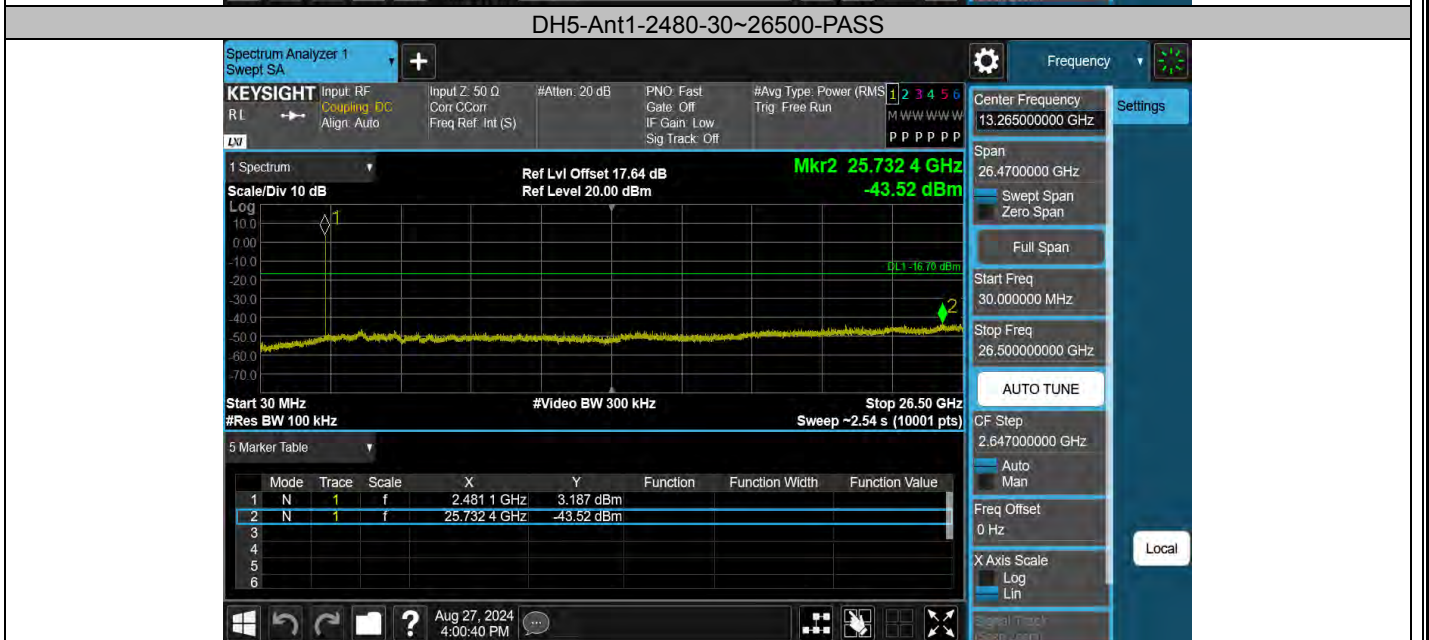
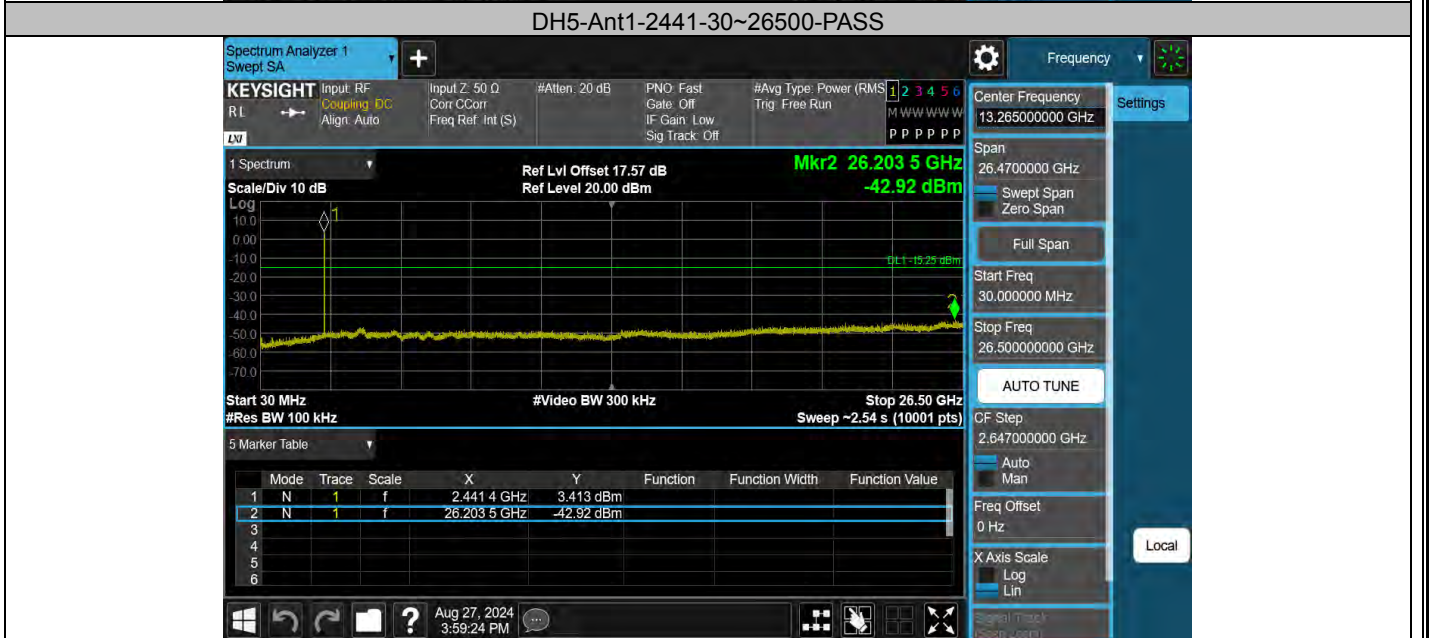
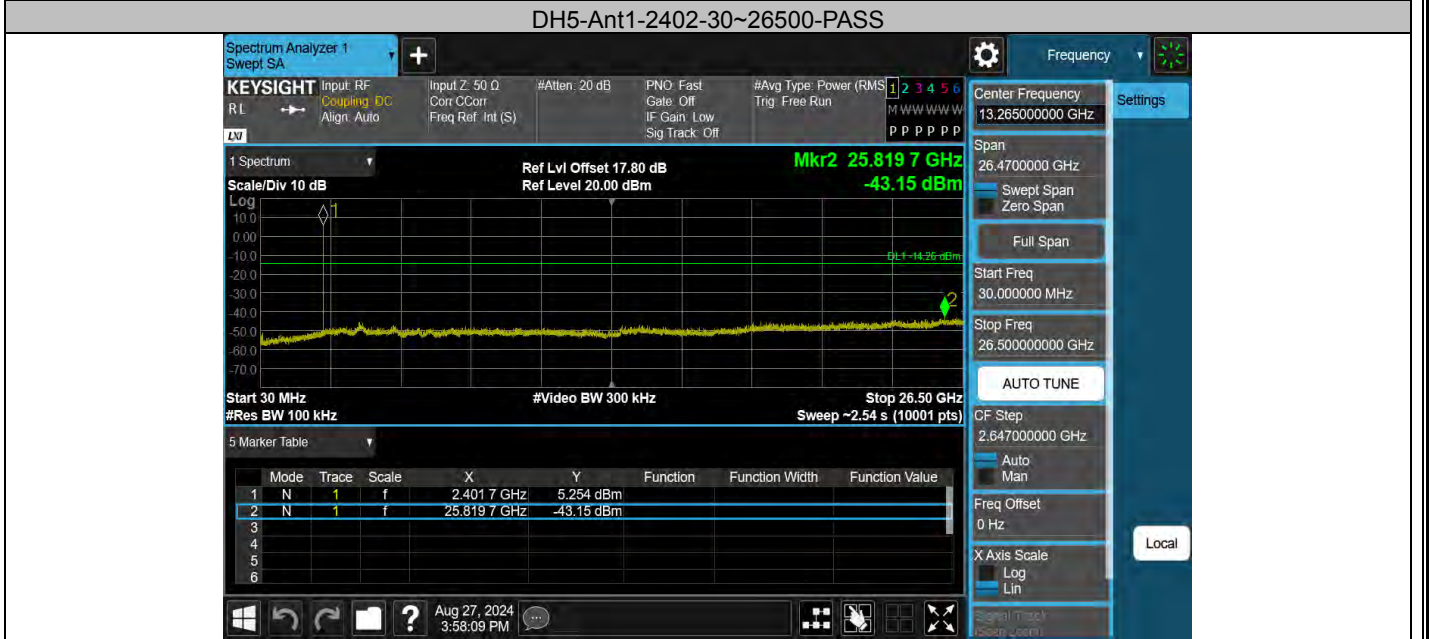
### 3DH5-Ant1-Hop 2480-PASS



## Appendix G: Conducted Spurious Emission Test Result

TestMode	Antenna	Frequency[MHz]	FreqRange [MHz]	RefLevel [dBm]	Result [dBm]	Limit [dBm]	Verdict
DH5	Ant1	2402	30~26500	5.74	-43.15	≤-14.26	PASS
DH5	Ant1	2441	30~26500	4.75	-42.92	≤-15.25	PASS
DH5	Ant1	2480	30~26500	3.30	-43.52	≤-16.7	PASS
2DH5	Ant1	2402	30~26500	5.78	-42.73	≤-14.22	PASS
2DH5	Ant1	2441	30~26500	4.58	-43.15	≤-15.42	PASS
2DH5	Ant1	2480	30~26500	2.45	-42.97	≤-17.55	PASS
3DH5	Ant1	2402	30~26500	6.02	-43.06	≤-13.98	PASS
3DH5	Ant1	2441	30~26500	4.75	-43.94	≤-15.25	PASS
3DH5	Ant1	2480	30~26500	3.20	-43.36	≤-16.8	PASS

### Test Graphs

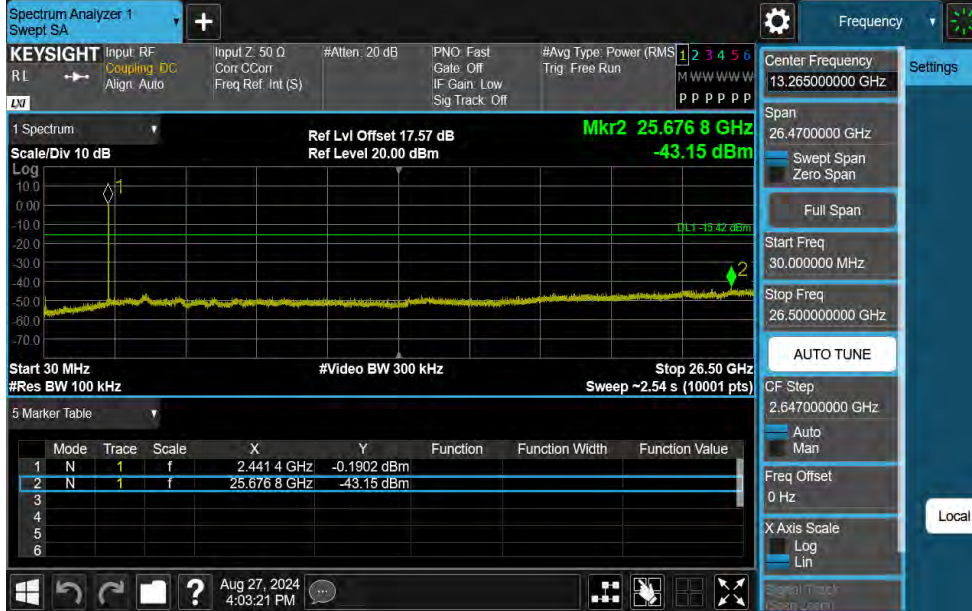




2DH5-Ant1-2402-30~26500-PASS



2DH5-Ant1-2441-30~26500-PASS



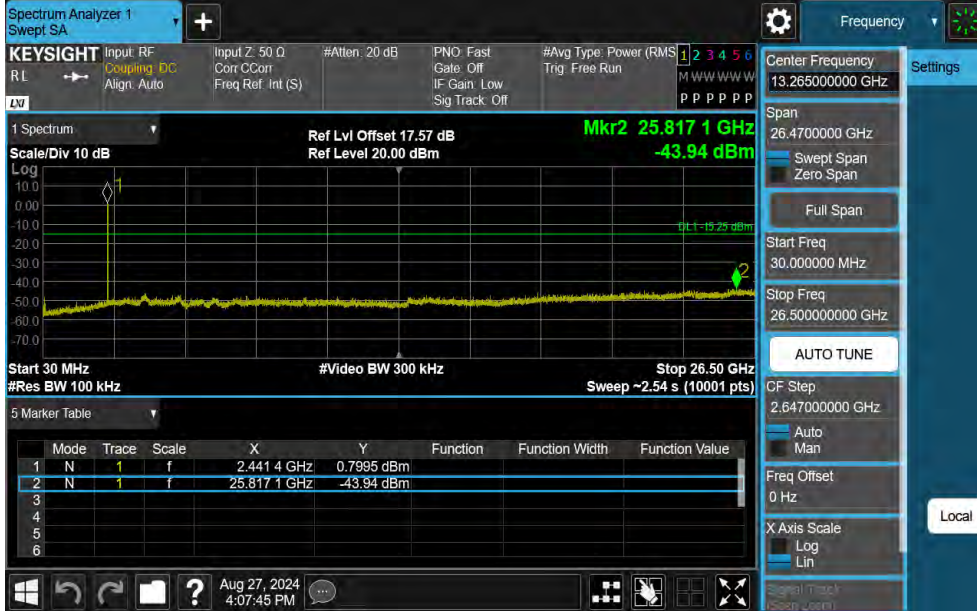
2DH5-Ant1-2480-30~26500-PASS



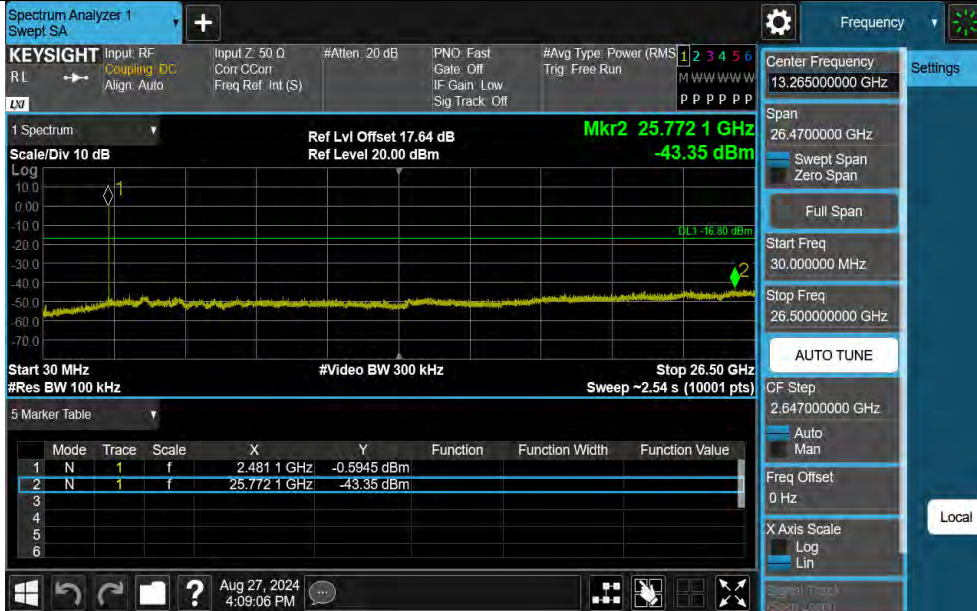
3DH5-Ant1-2402-30~26500-PASS



3DH5-Ant1-2441-30~26500-PASS



3DH5-Ant1-2480-30~26500-PASS

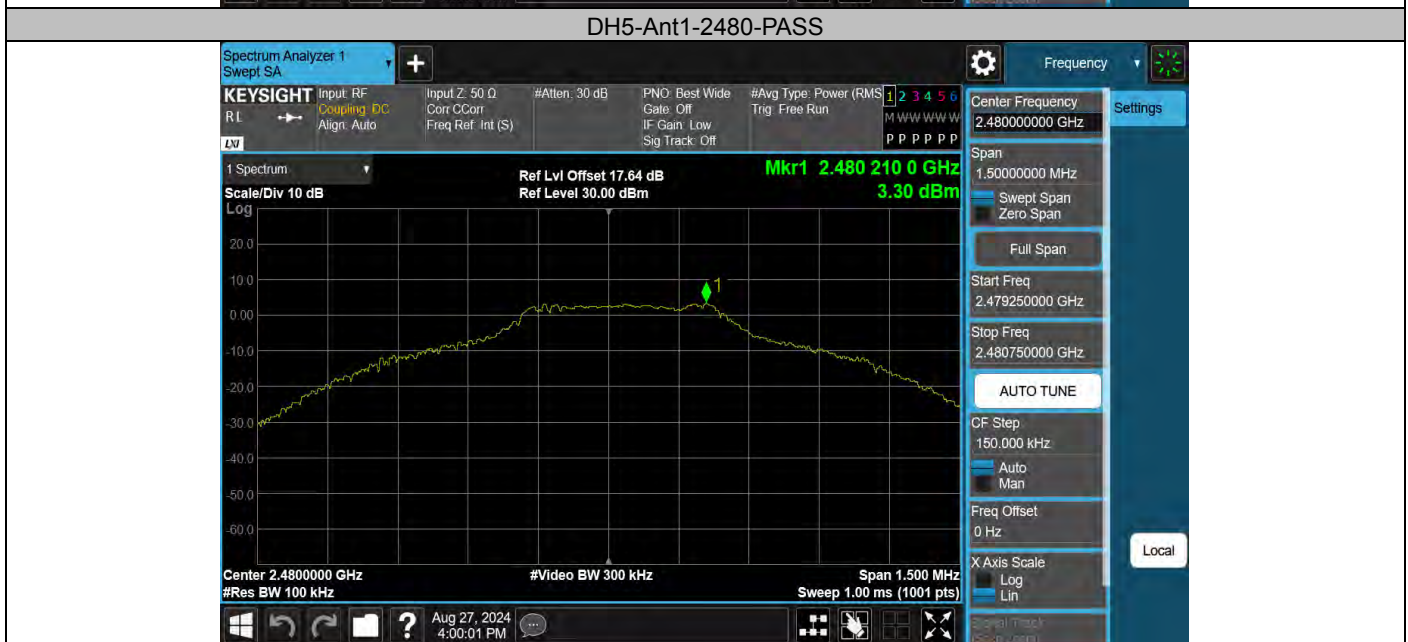




## Appendix H: Reference level measurement Test Result

TestMode	Antenna	Freq(MHz)	Max.Point[MHz]	Result[dBm]
DH5	Ant1	2402	2402.03	5.74
DH5	Ant1	2441	2440.87	4.75
DH5	Ant1	2480	2480.21	3.30
2DH5	Ant1	2402	2402.19	5.78
2DH5	Ant1	2441	2440.86	4.58
2DH5	Ant1	2480	2479.86	2.45
3DH5	Ant1	2402	2401.87	6.02
3DH5	Ant1	2441	2440.87	4.75
3DH5	Ant1	2480	2480.18	3.20

### Test Graphs

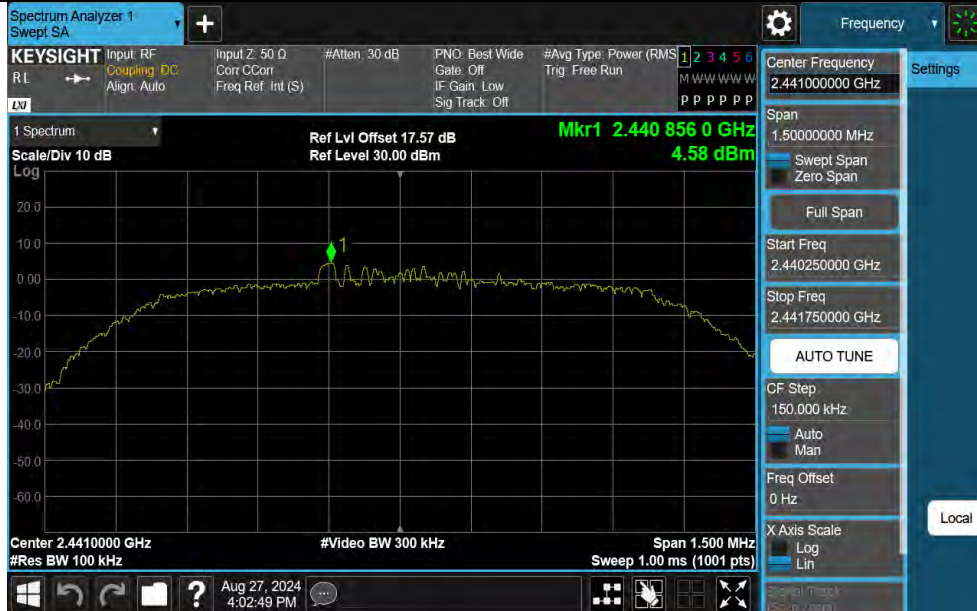




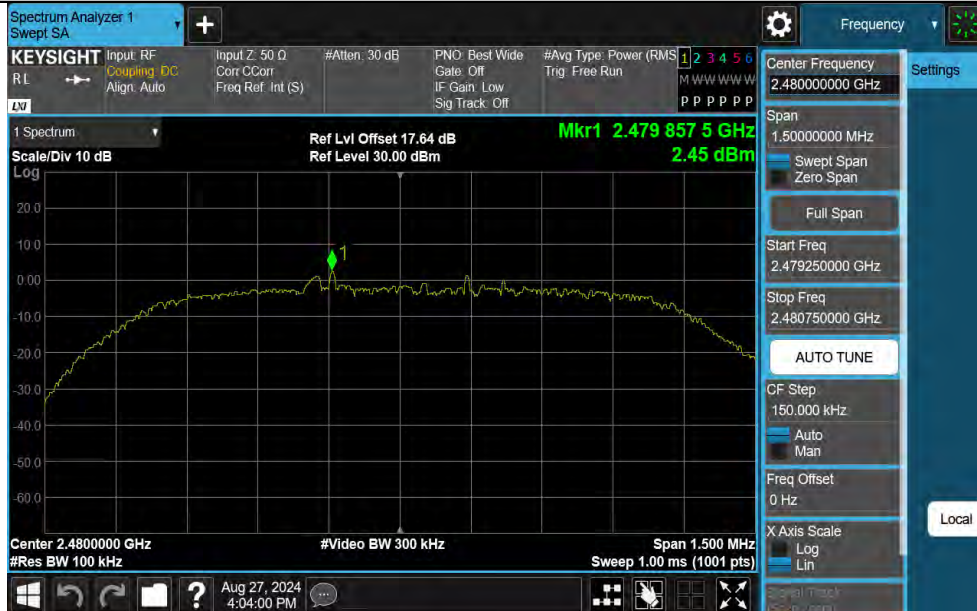
### 2DH5-Ant1-2402-PASS



### 2DH5-Ant1-2441-PASS



### 2DH5-Ant1-2480-PASS



### 3DH5-Ant1-2402-PASS



### 3DH5-Ant1-2441-PASS



### 3DH5-Ant1-2480-PASS





## 14. TEST SETUP PHOTO

### Conducted Test



**Radiated Test (Below 1GHz)**



**Radiated Test (Above 1GHz)**





# 15. EUT PHOTO

External Photos  
M/N: Vegas



### External Photos

M/N: Vegas

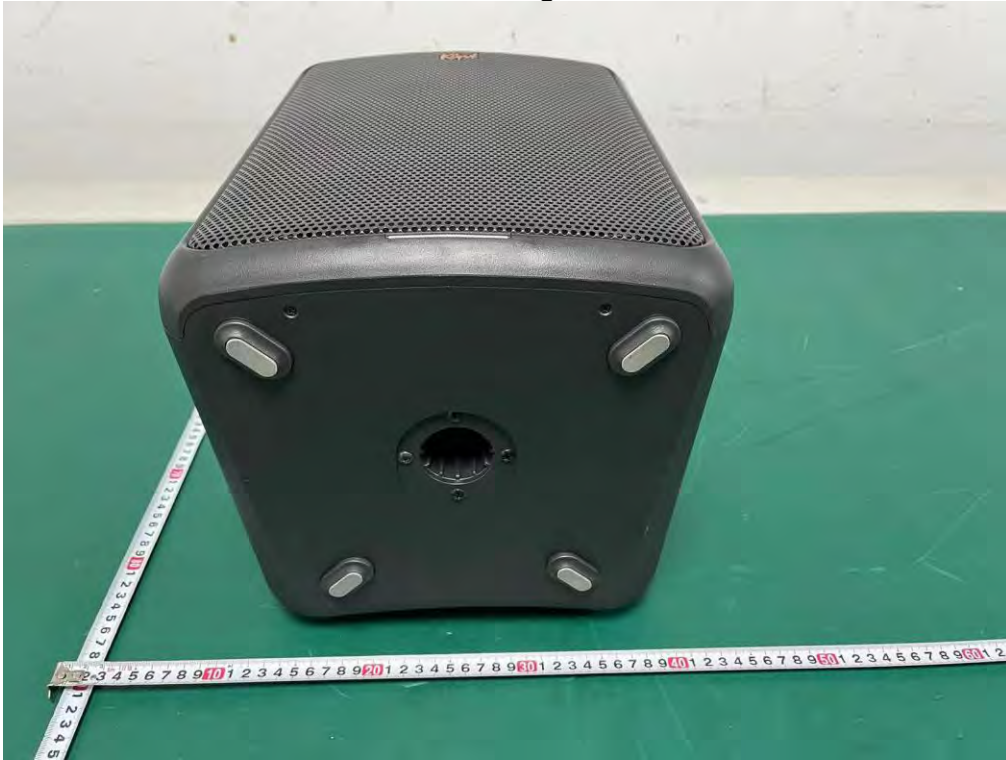


**External Photos**  
M/N: Vegas





**External Photos**  
M/N: Vegas



### External Photos

M/N: Vegas





**Internal Photos**  
M/N: Vegas



**Internal Photos**  
M/N: Vegas





**Internal Photos**  
M/N: Vegas



### Internal Photos

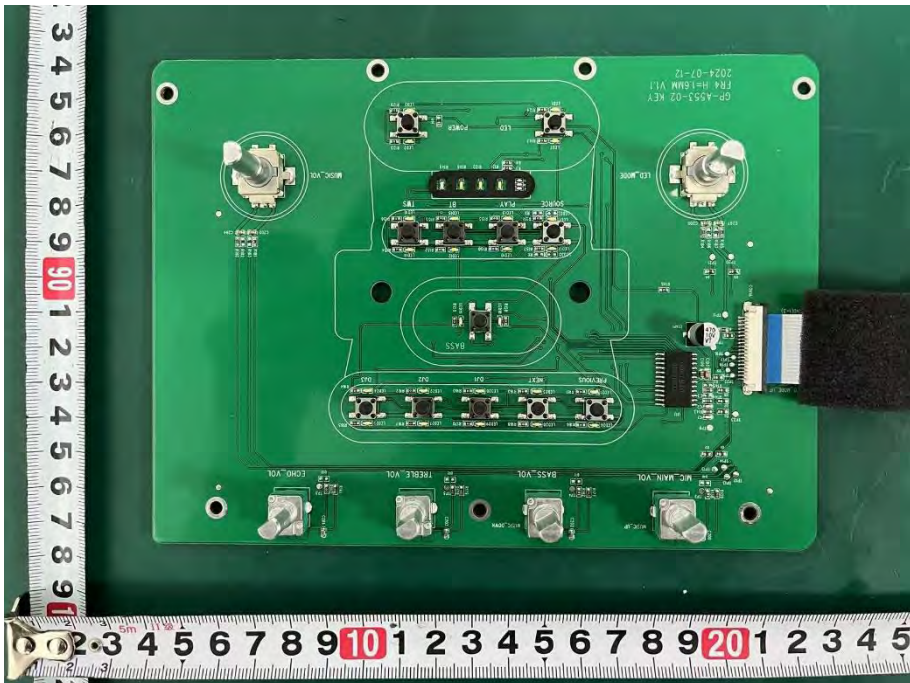
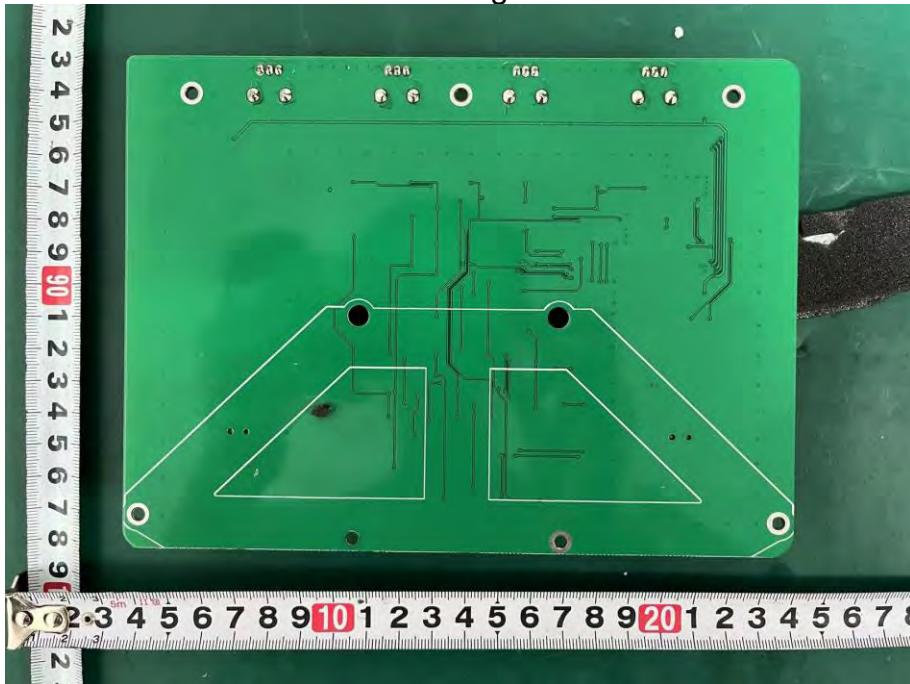
M/N: Vegas



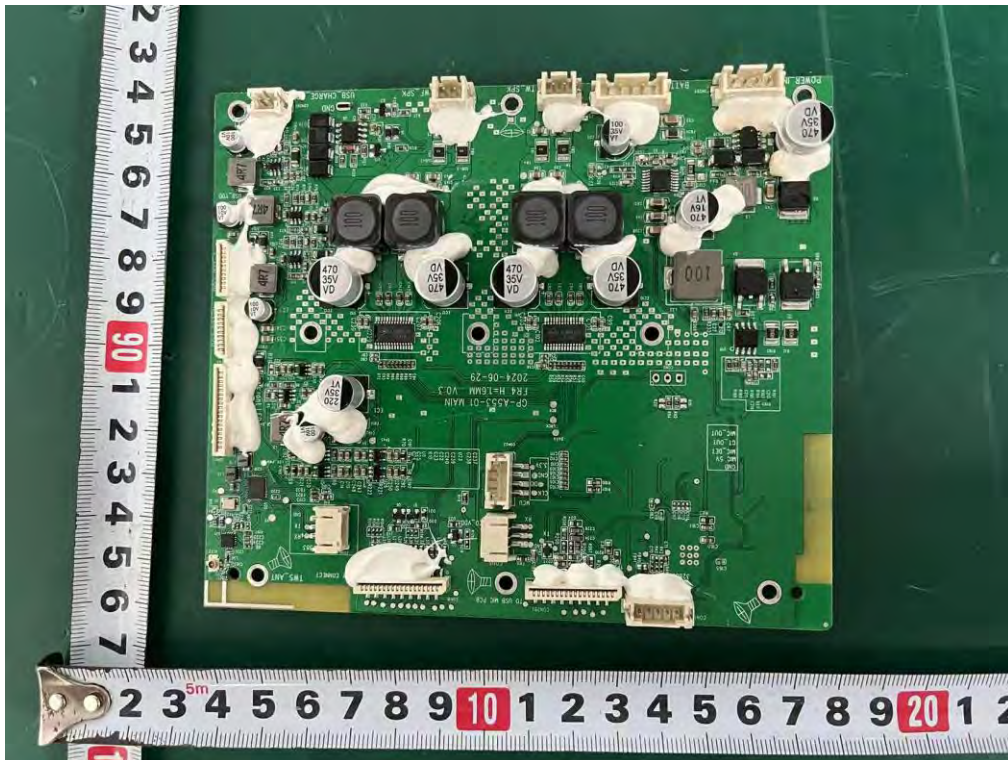


### Internal Photos

M/N: Vegas

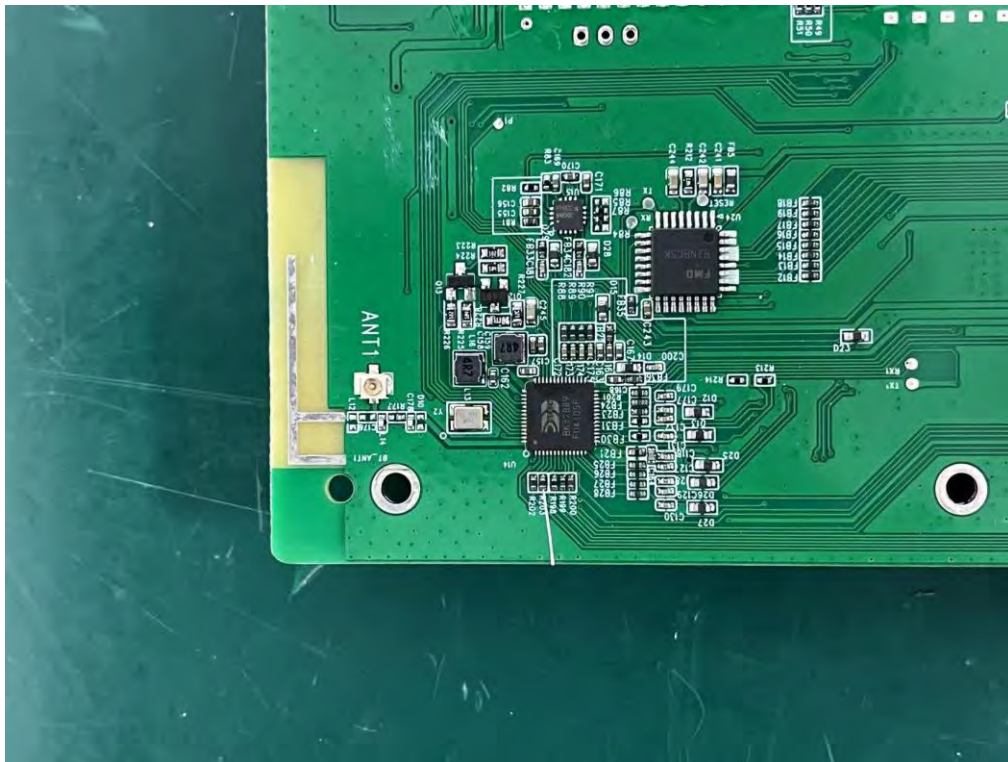
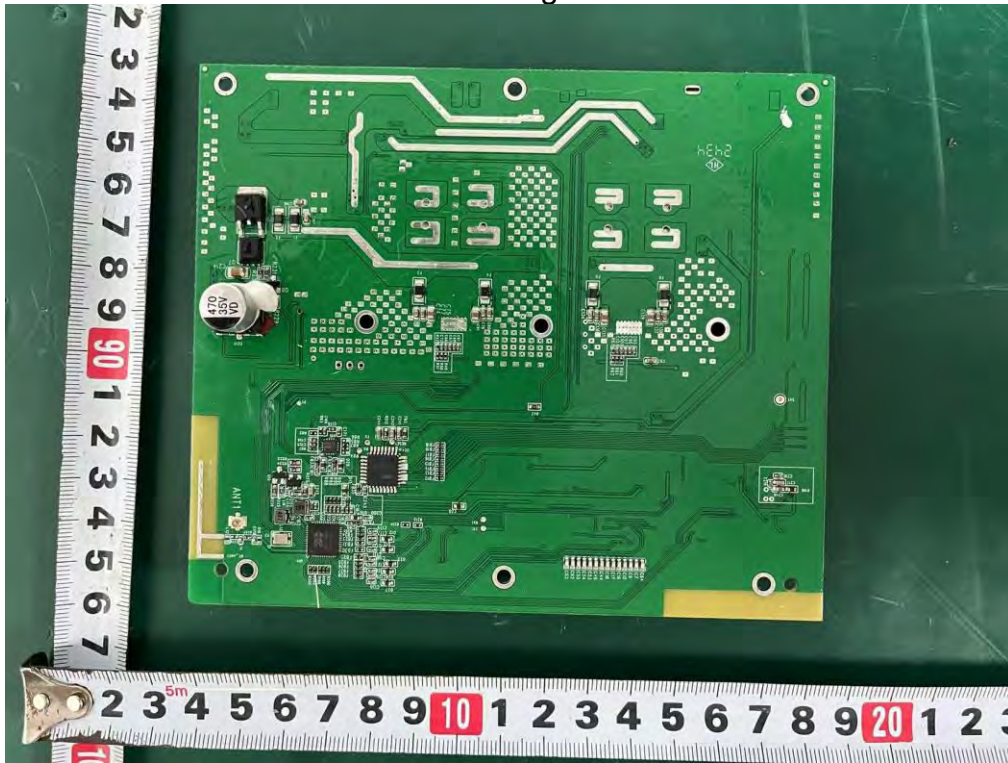


### Internal Photos M/N: Vegas

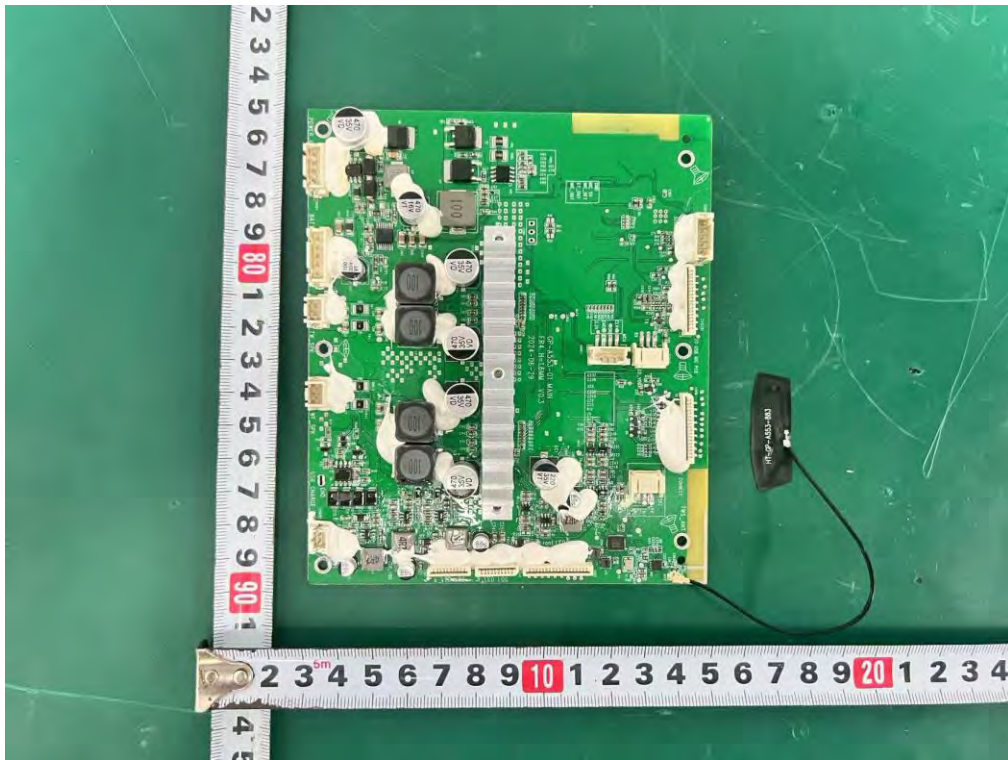
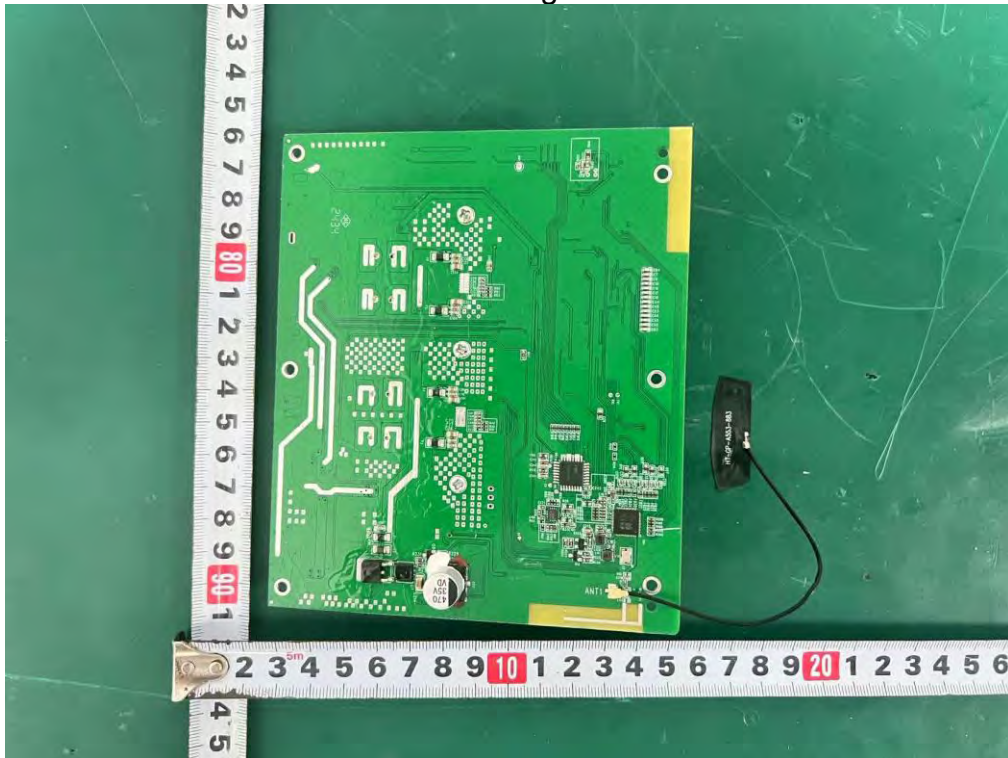




### Internal Photos M/N: Vegas

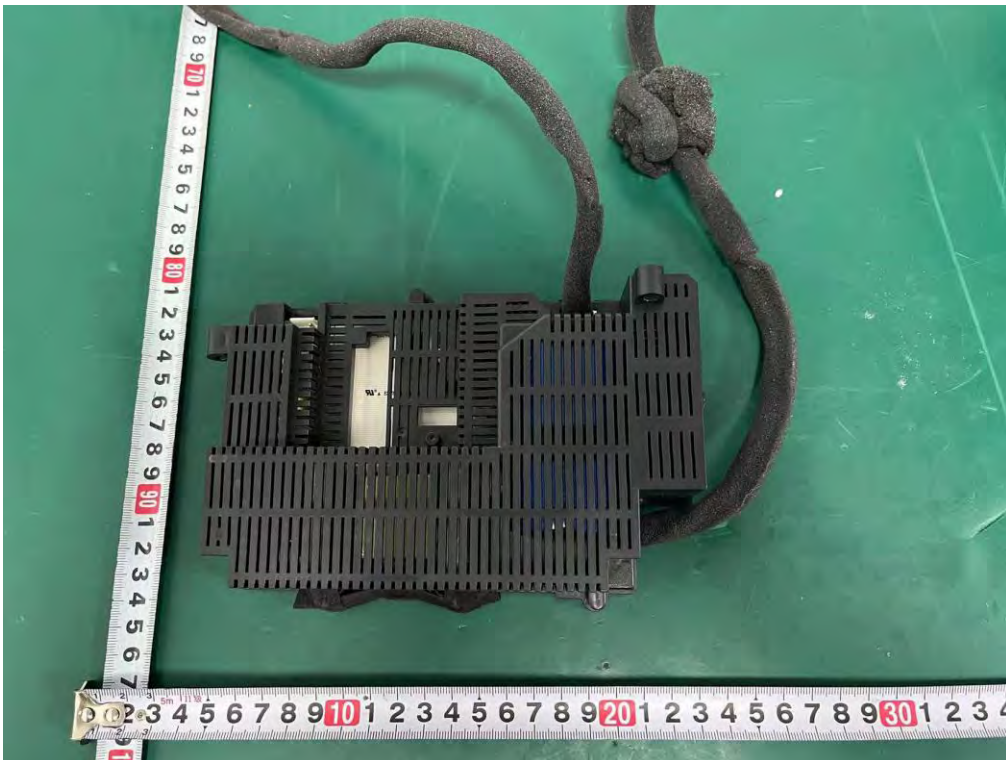
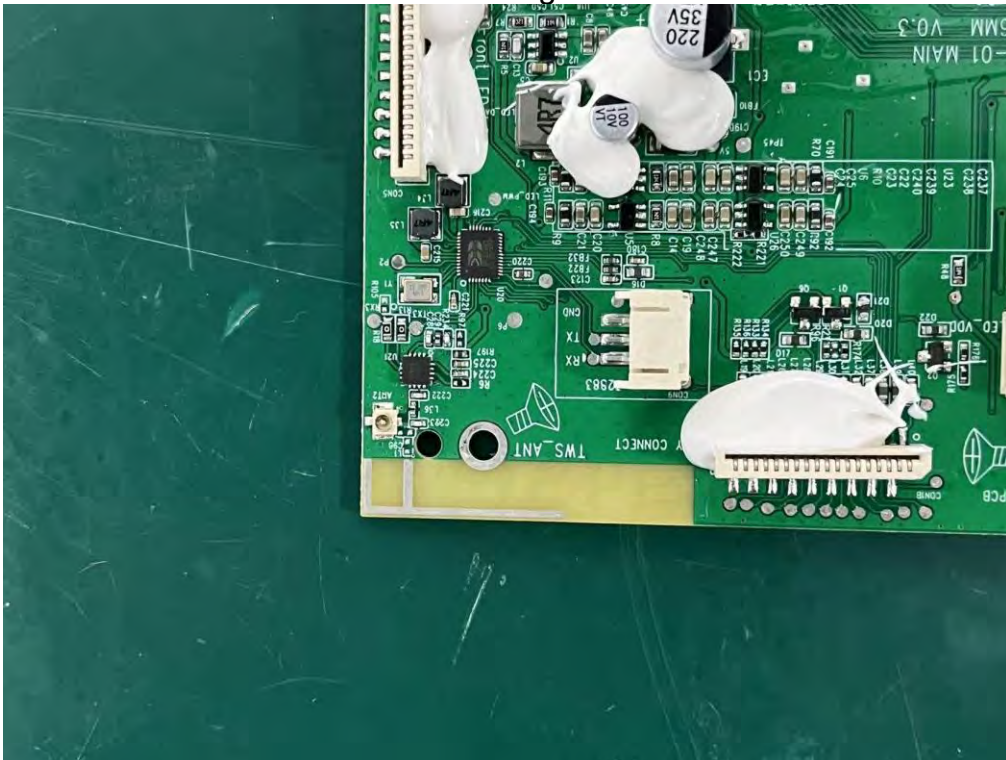


### Internal Photos M/N: Vegas

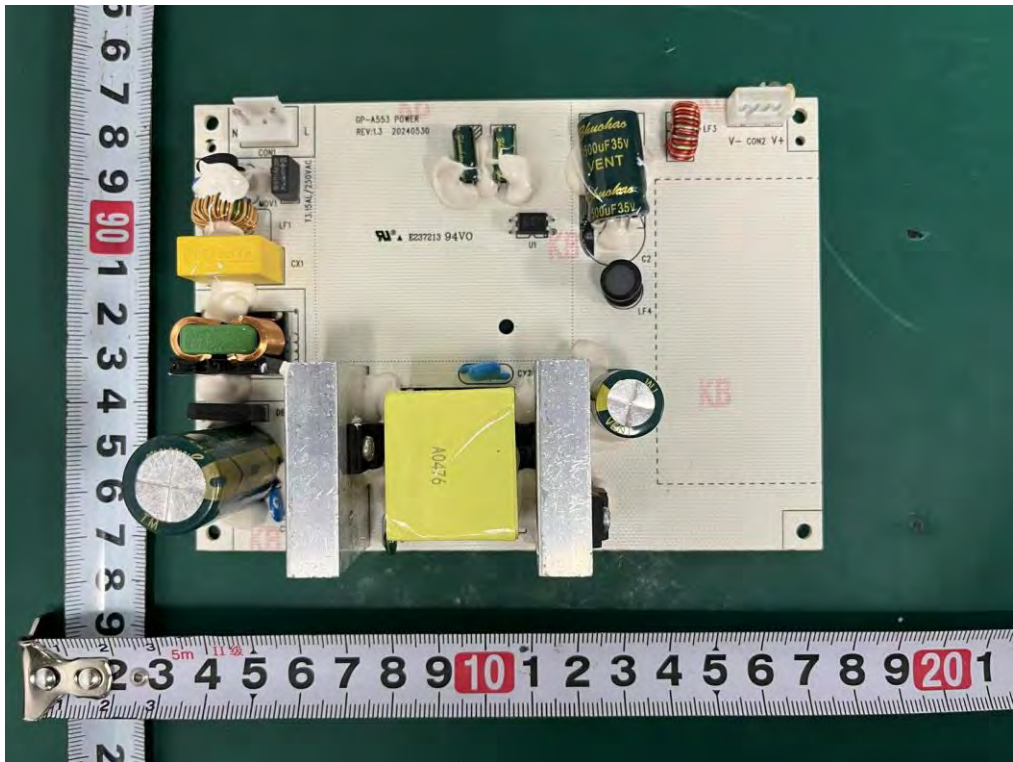
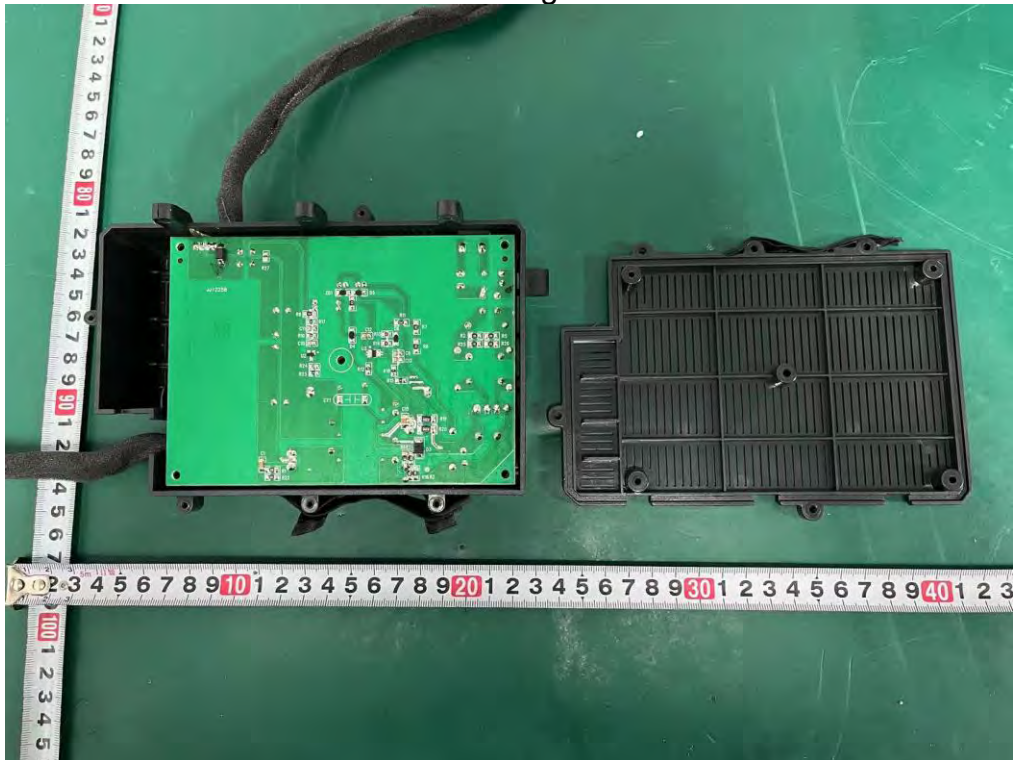




**Internal Photos**  
M/N: Vegas



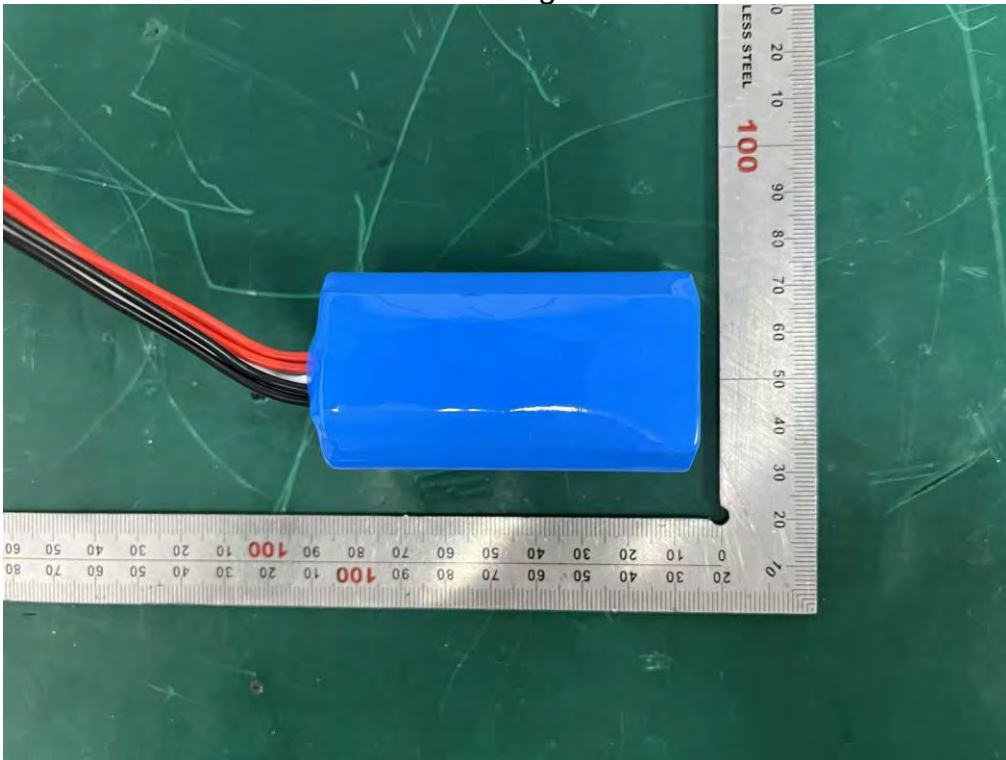
### Internal Photos M/N: Vegas





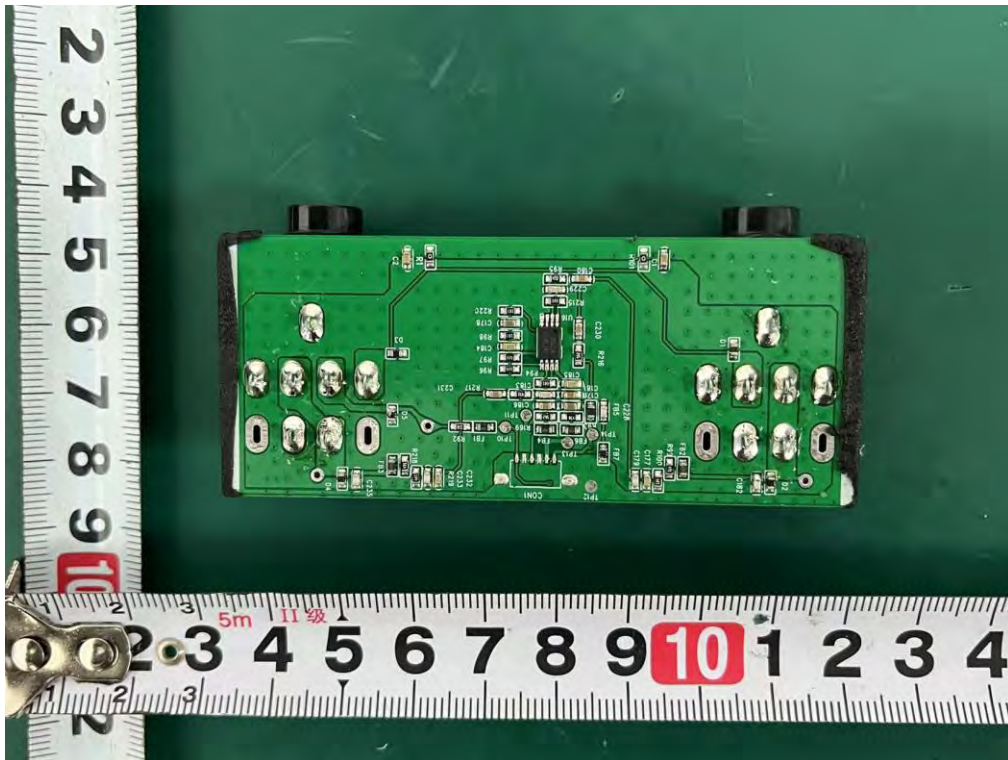
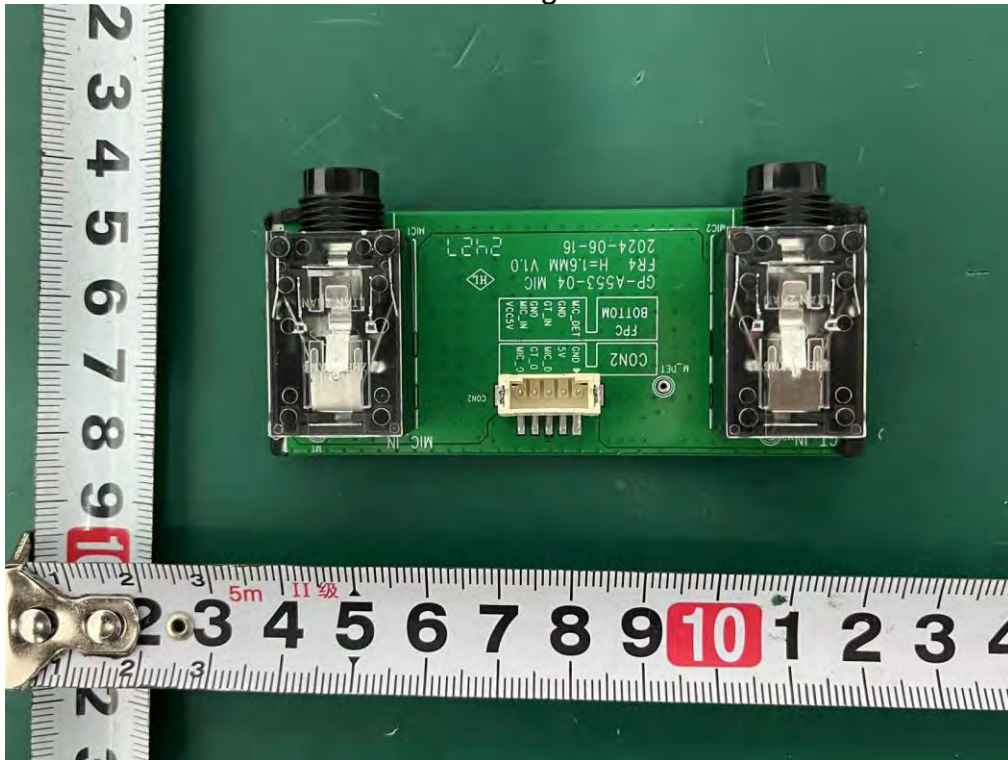


### Internal Photos M/N: Vegas

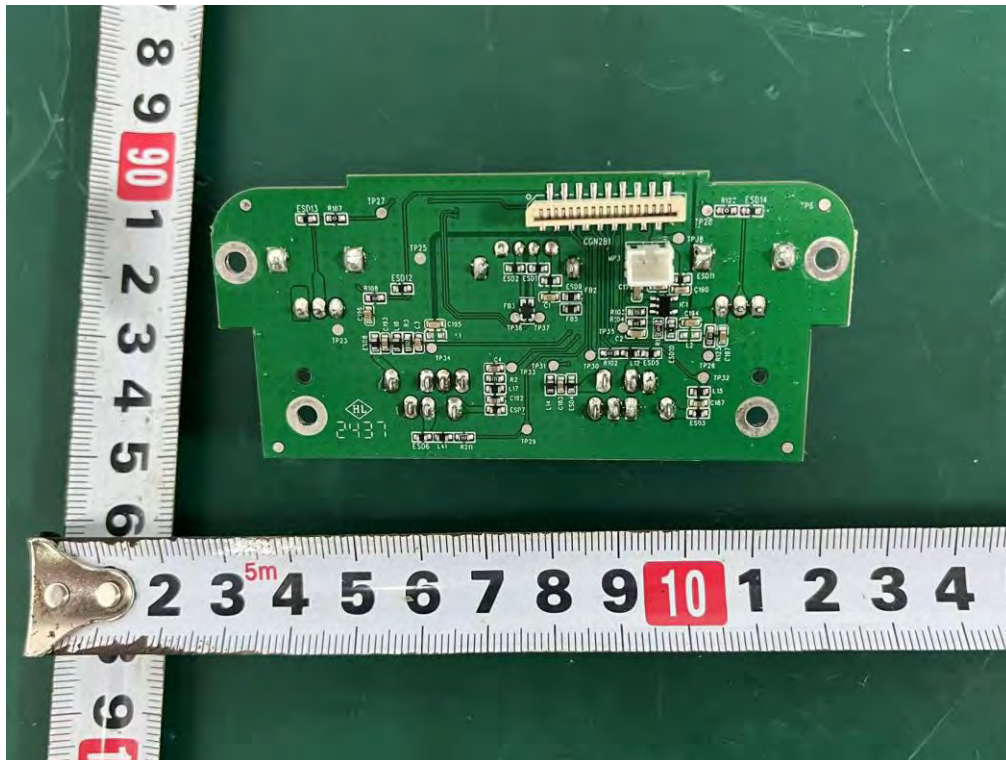
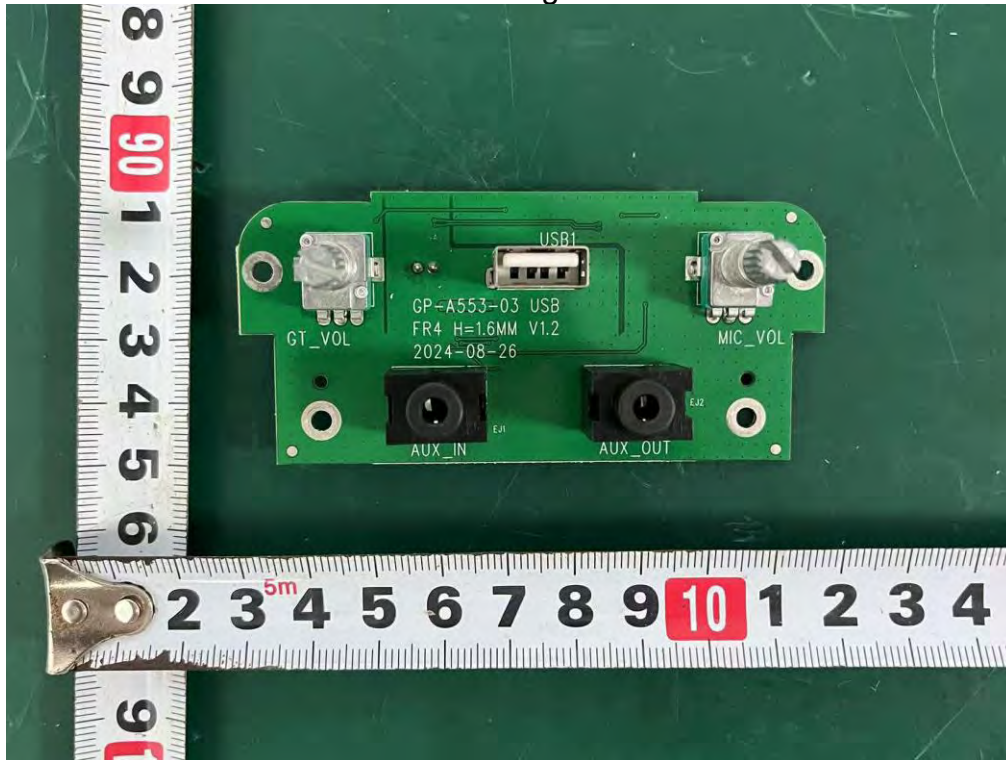




**Internal Photos**  
M/N: Vegas



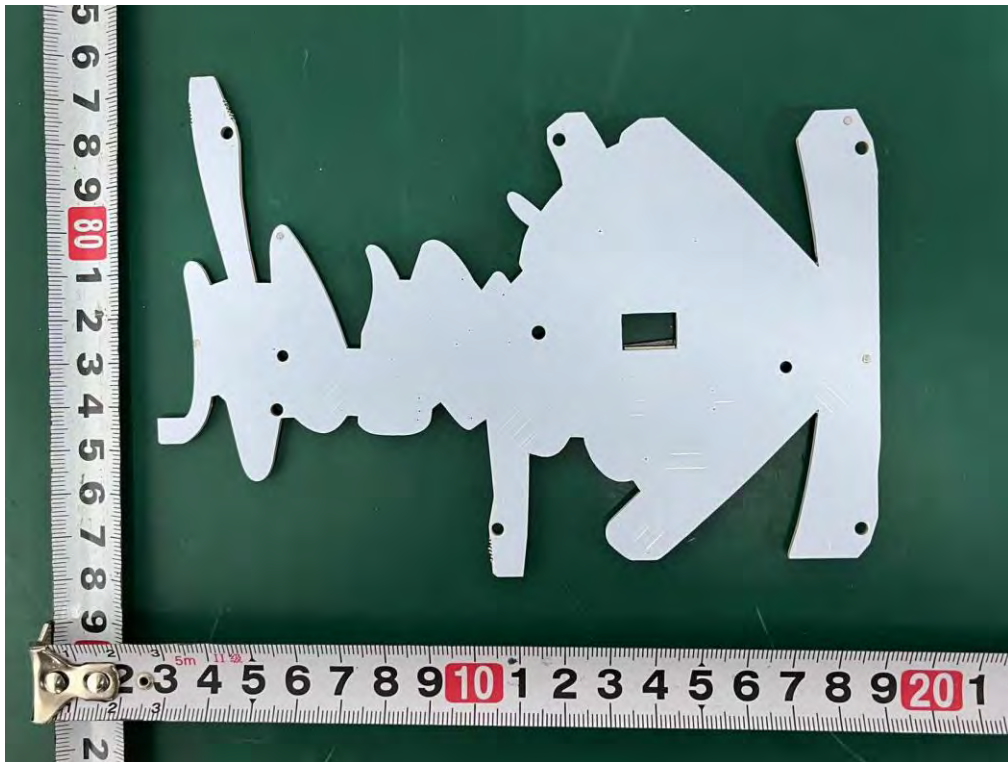
**Internal Photos**  
M/N: Vegas





### Internal Photos

M/N: Vegas



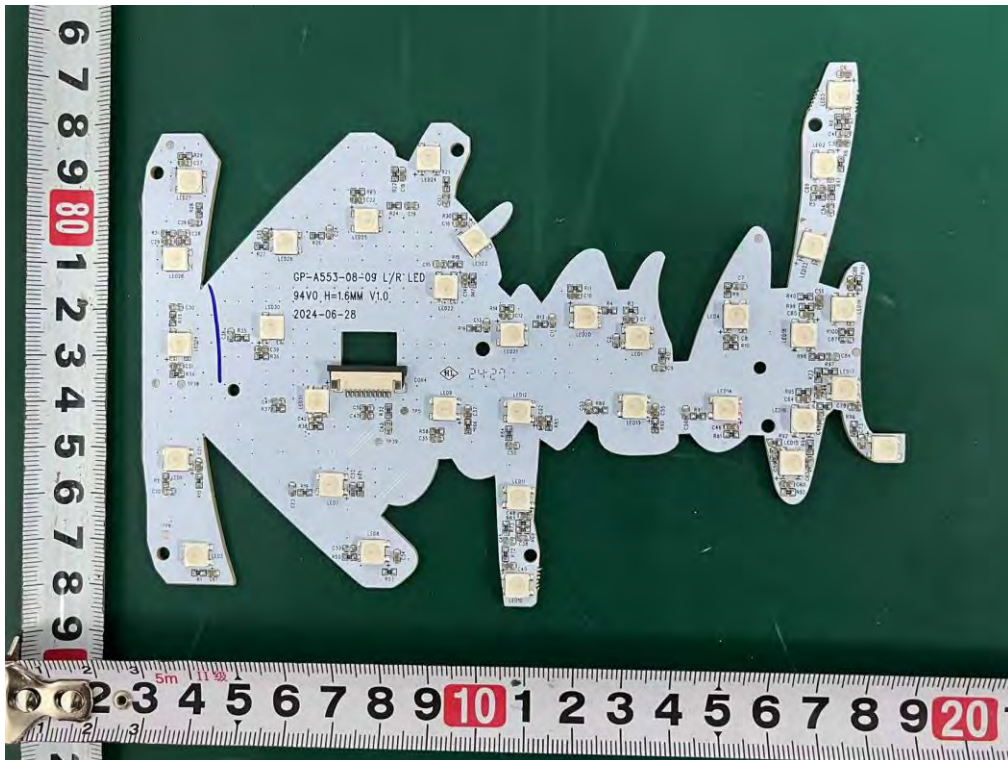
### Internal Photos M/N: Vegas





### Internal Photos

M/N: Vegas



End of Test Report