

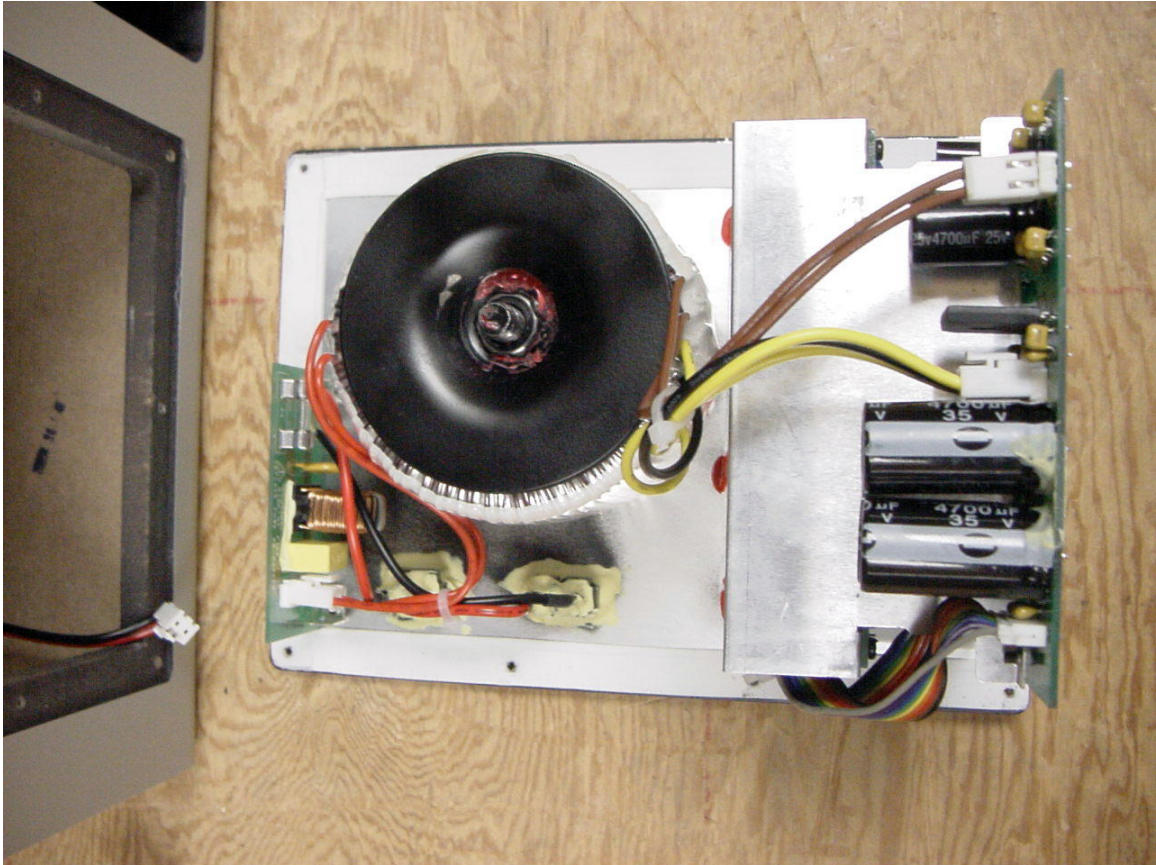
Company: Klipsch

Product: iFi

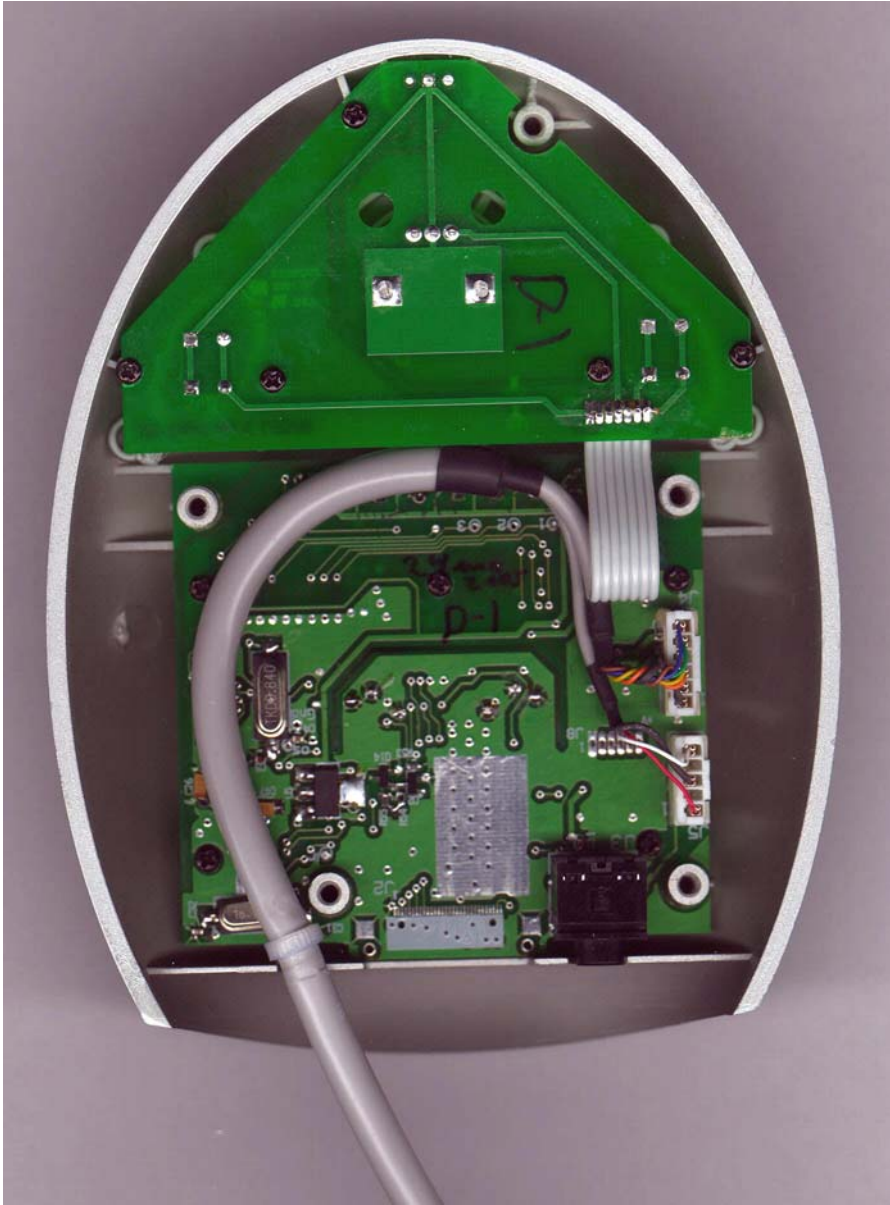
FCC ID#:

Date: 4/14/2005

Photo Description: **Back Cover Removed From Subwoofer Showing Power Supply**



Company: Klipsch
Product: iFi
FCC ID#:
Date: 4/14/2005
Photo Description: **Bottom Cover Removed**



Company: Klipsch

Product: iFi

FCC ID#:

Date: 4/14/2005

Photo Description: Connecting Cable Disconnected



Company: Klipsch
Product: iFi
FCC ID#:
Date: 4/14/2005
Photo Description: Inside of Covers



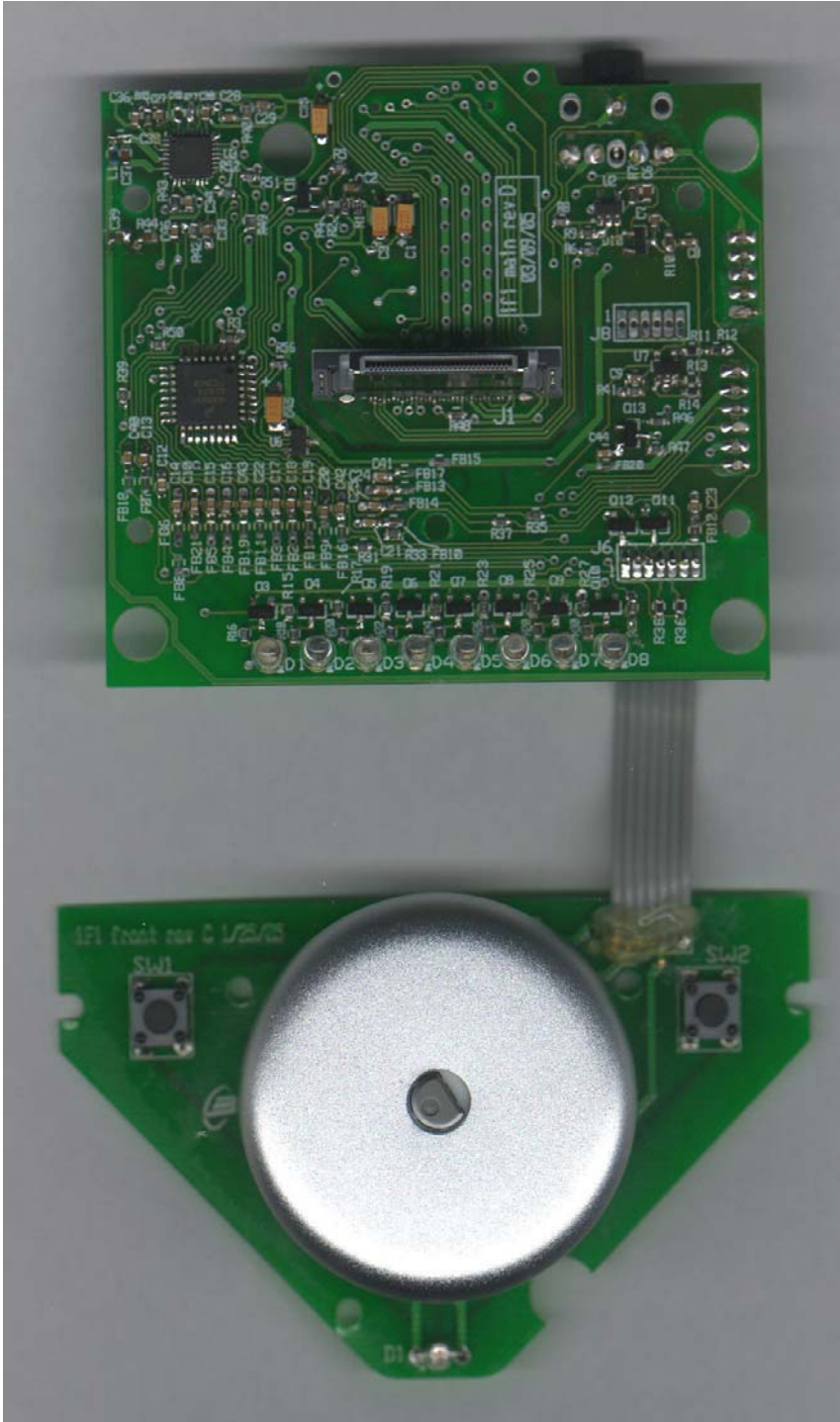
Company: Klipsch

Product: iFi

FCC ID#:

Date: 4/14/2005

Photo Description: **Top of Main and Control Board**



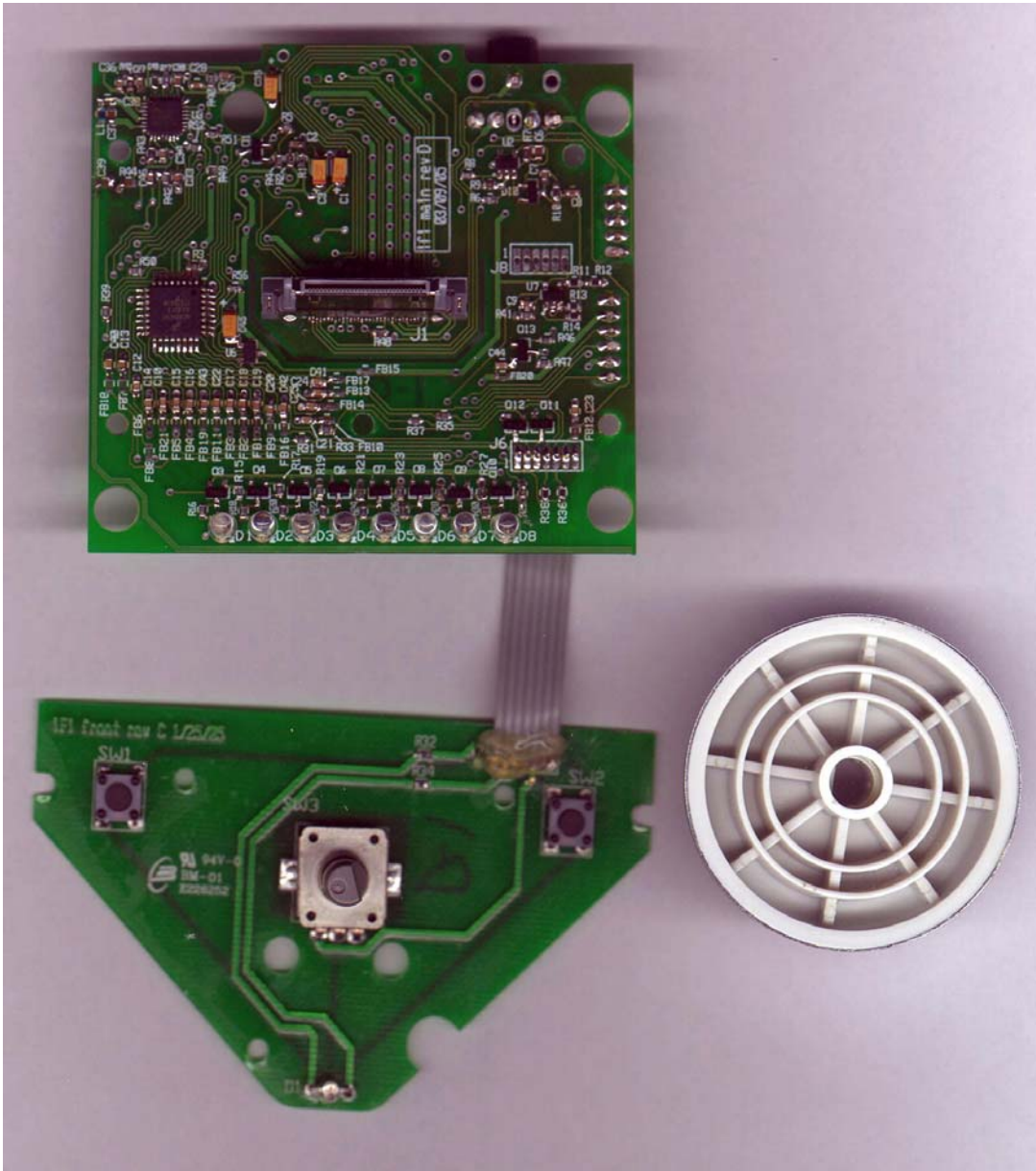
Company: Klipsch

Product: iFi

FCC ID#:

Date: 4/14/2005

Photo Description: Top of Main and Control Board with Dial Removed



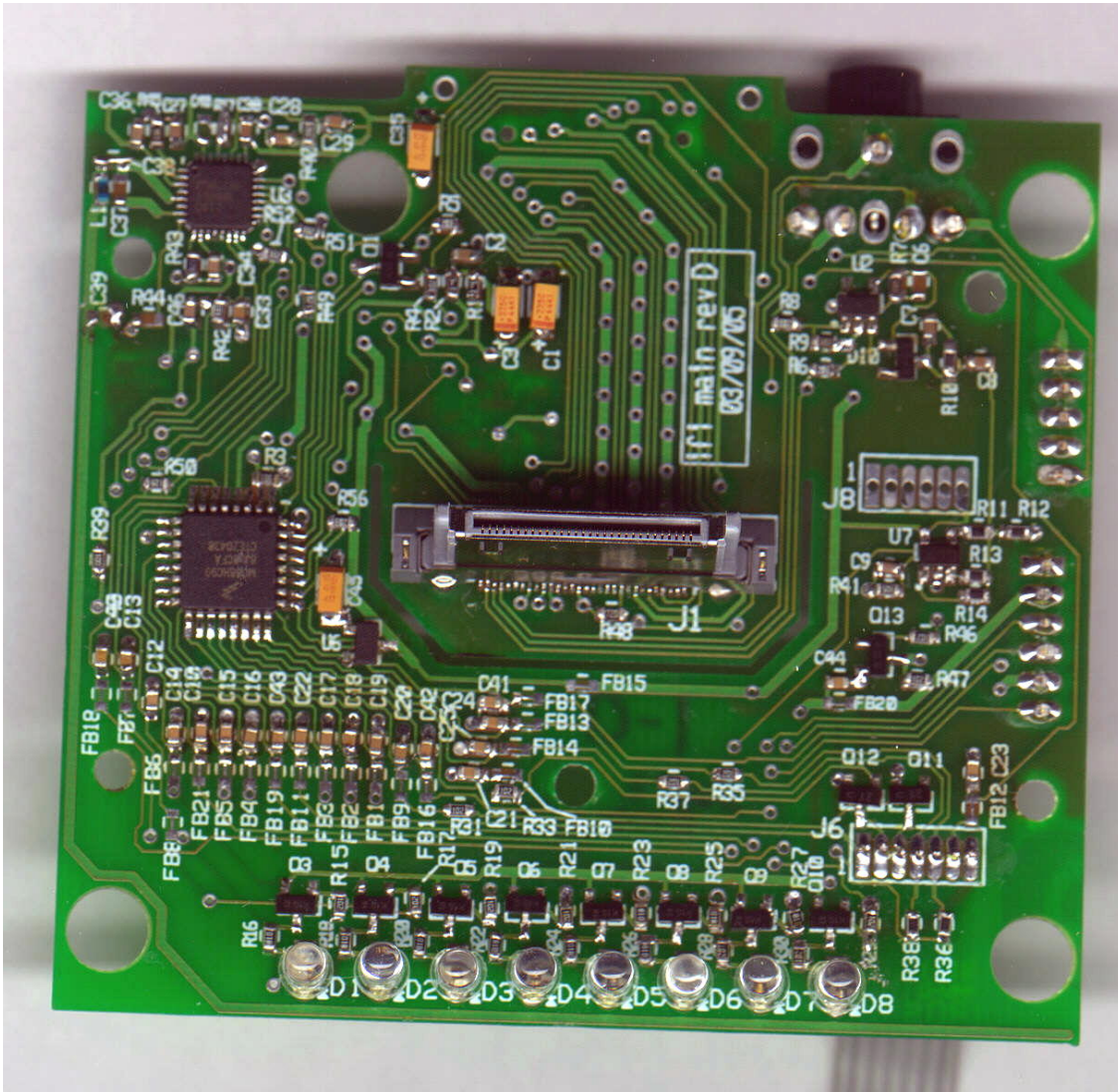
Company: Klipsch

Product: iFi

FCC ID#:

Date: 4/14/2005

Photo Description: Top of Main Board with RF Components



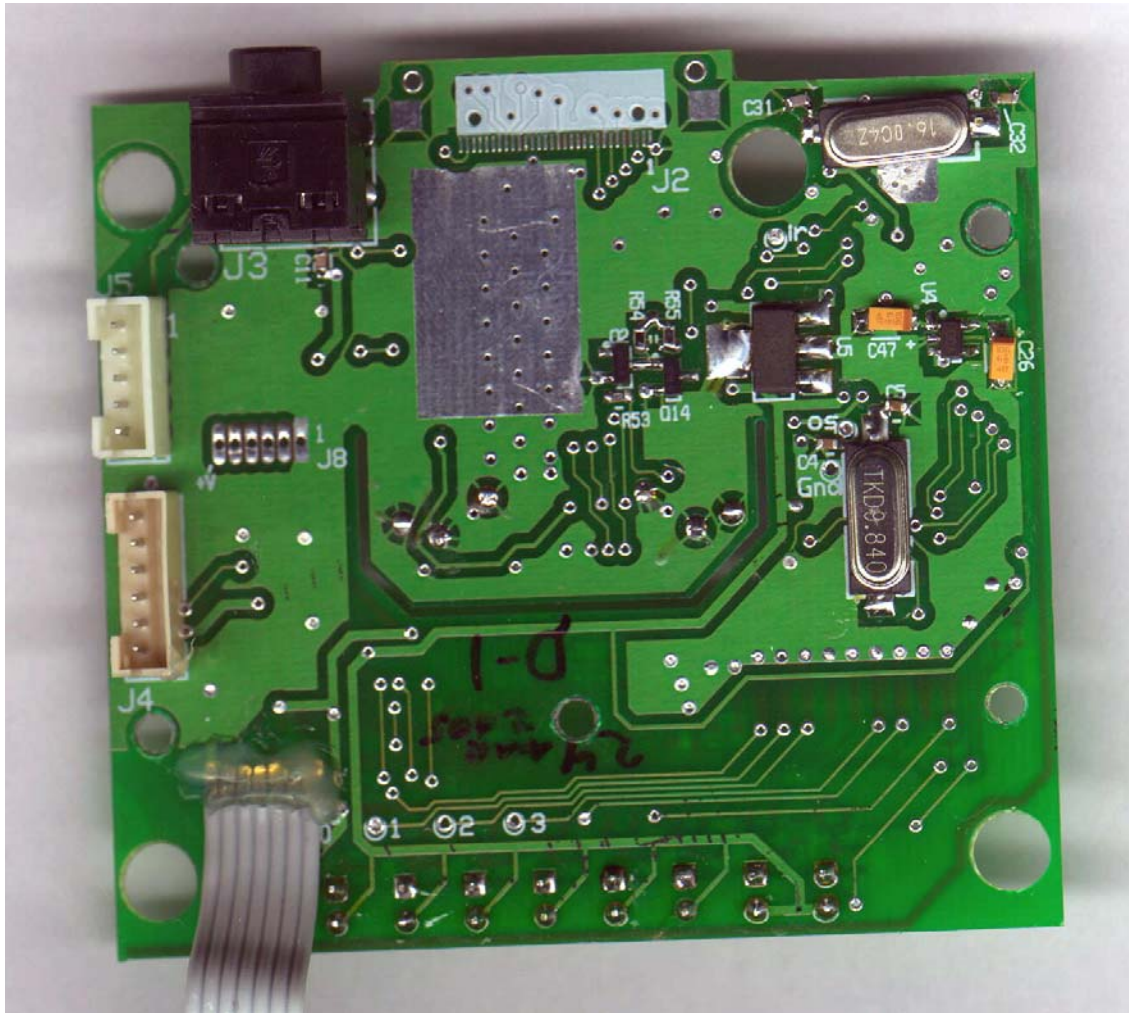
Company: Klipsch

Product: iFi

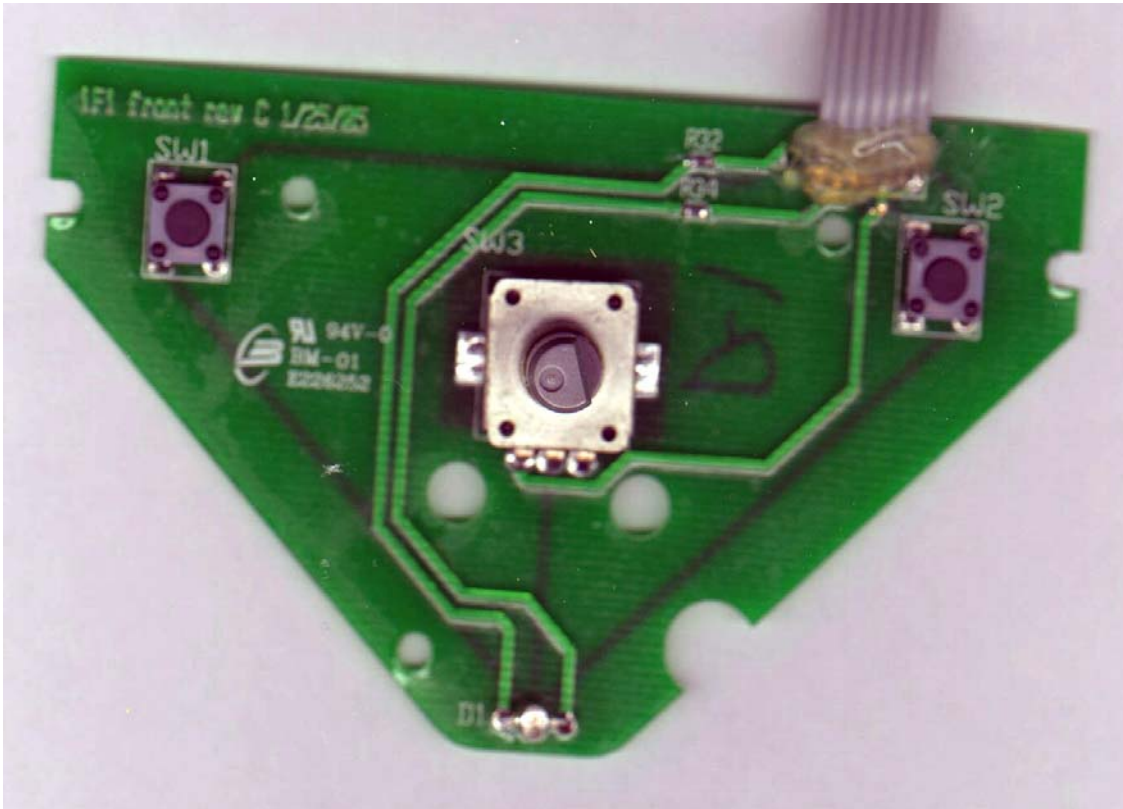
FCC ID#:

Date: 4/14/2005

Photo Description: **Bottom of Control Board with RF Components**



Company: Klipsch
Product: iFi
FCC ID#:
Date: 4/14/2005
Photo Description: Top of Control Board



Company: Klipsch
Product: iFi
FCC ID#:
Date: 4/14/2005
Photo Description: **Bottom of Control Board**

