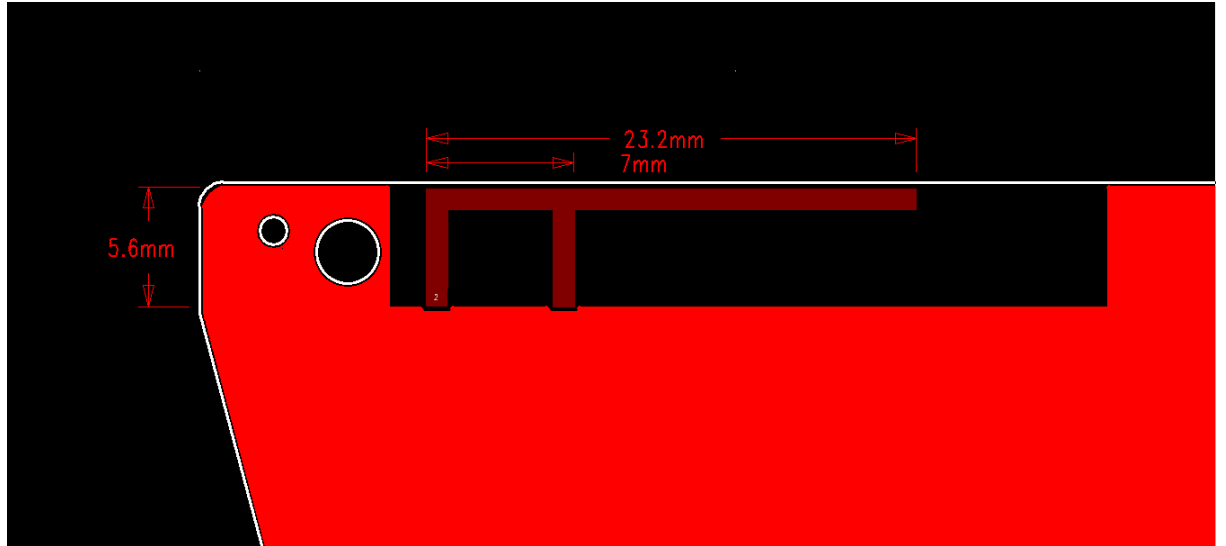


Information

*PCB ANTENNA

*Manufacturer: Soundlab Technology Co., Ltd.

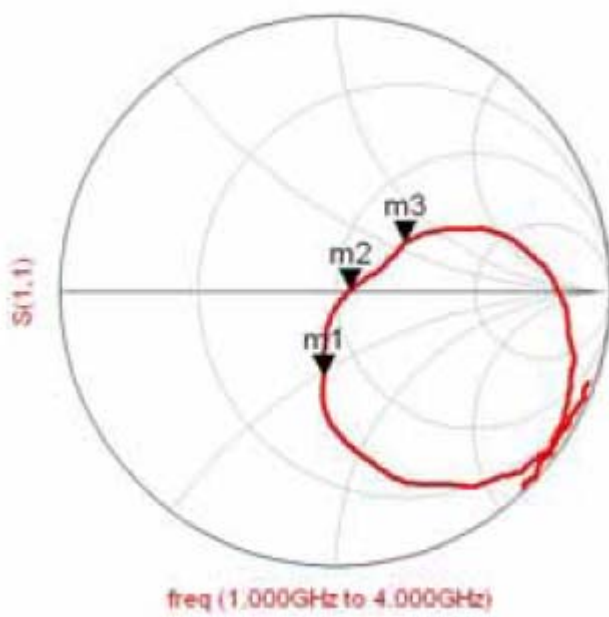
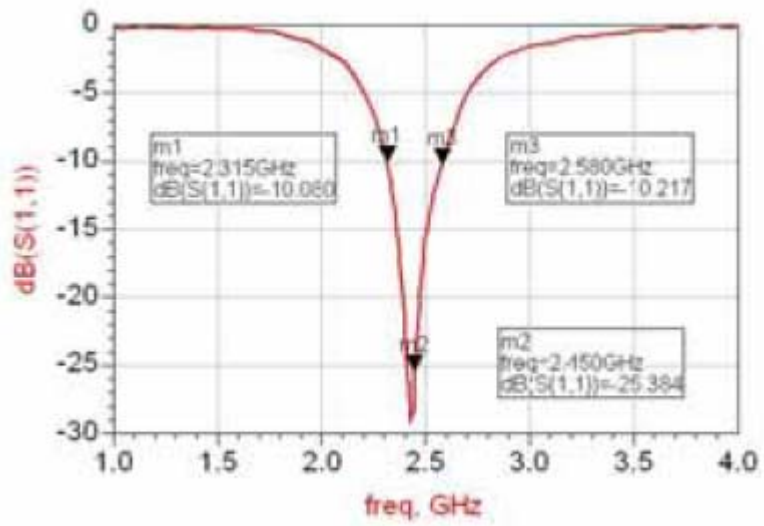
1. Dimensions



2. Specifications

Working Frequency Range	2.4 GHz ~ 2.5GHz
Gain	2 dBi (Typical)
VSWR	2 max.
Polarization	Linear
Azimuth Bandwidth	Omni-directional
Impedance	50Ω

3. Return Loss



4. Radiation Patterns

Radiation Patterns

