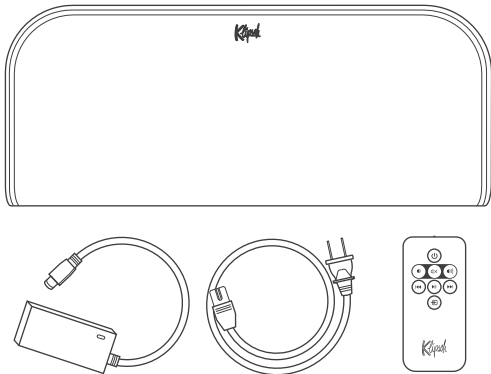






# INSIDE

CONTENU • CONTENIDO • INHALT • CONTENUTO • CONTEÚDO • 目录 • 同梱品

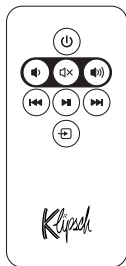
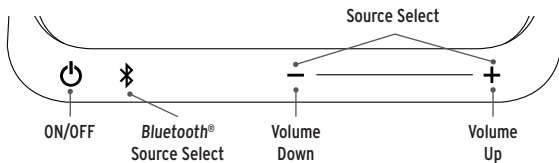


International Adapters Included.  
Adaptateurs Internationaux Inclus.  
Contiene Adaptadores Internacionales.  
Internationale Adapter Im Lieferumfang Enthalten.

Sono Inclusi Adattatori Internazionali.  
Adaptadores Internacionais Incluídos.  
中国出售的产品不包括国际电源适配器  
国際アダプターが含まれています。

# BUTTONS

CONTENU • CONTENIDO • INHALT • CONTENUTO • CONTEÚDO • 目录 • コントロール



ON / OFF



VOLUME DOWN



MUTE



VOLUME UP



PREVIOUS

*(Bluetooth mode only)*



PLAY / PAUSE

*(Bluetooth mode only)*



NEXT

*(Bluetooth mode only)*



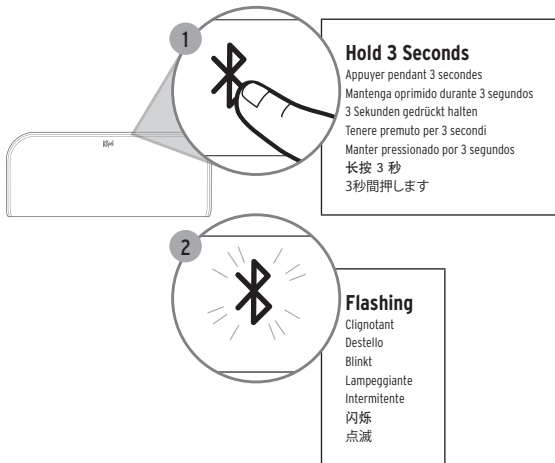
SOURCE SELECT

<p><b>ON / OFF</b></p> <p>Sous tension w / Hors tension Encendido / Apagado</p> <p>Ein / Aus</p> <p>Acceso / Spento</p> <p>Ligar / Desligar</p> <p>开/关</p> <p>電源オン/オフ</p>	<p><b>Source Select</b></p> <p>Sélection de la source</p> <p>Selección de fuente</p> <p>Quellenwahl</p> <p>Selezione segnale</p> <p>Seleção de fonte</p> <p>源选择</p> <p>入力選択</p>	<p><b>Volume Down</b></p> <p>Volume bas</p> <p>Bajada de volumen</p> <p>Leiser</p> <p>Riduzione volume</p> <p>Diminuir o volume</p> <p>音量减小</p> <p>音量ダウン</p>	<p><b>Volume Up</b></p> <p>Volume haut</p> <p>Subida de volumen</p> <p>Lauter</p> <p>Aumento volume</p> <p>Aumentar o volume</p> <p>音量增大</p> <p>音量アップ</p>
---	---	--	---

<p><b>Bluetooth® Source Select</b></p> <p>Sélection de la source <i>Bluetooth®</i></p> <p>Selección de fuente <i>Bluetooth®</i></p> <p><i>Bluetooth®</i> Quellenwahl</p> <p>Selezione segnale <i>Bluetooth®</i></p> <p>Seleção de fonte <i>Bluetooth®</i></p> <p>蓝牙®源选择</p> <p>Bluetooth 入力選択</p>	<p><b>Play / Pause</b></p> <p>Lecture/pause</p> <p>Reproducción/pausa</p> <p>Wiedergabe/Pause</p> <p>Riproduzione / Pausa</p> <p>Reproduzir/Pausar</p> <p>播放/暫停</p> <p>再生/停止</p>	<p><b>Previous</b></p> <p>Précédent</p> <p>Anterior</p> <p>Bisherige</p> <p>Precedente</p> <p>Anterior</p> <p>以前</p> <p>前</p>	<p><b>Next</b></p> <p>Suivant</p> <p>Siguiente</p> <p>Nächster</p> <p>Il prossimo</p> <p>Próximo</p> <p>下一个</p> <p>次</p>
---	--	---	--

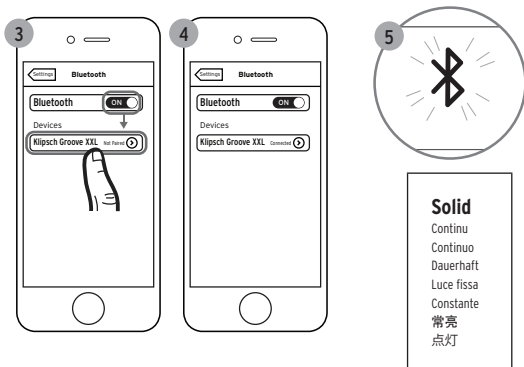
# BLUETOOTH® WIRELESS TECHNOLOGY

TECNOLOGÍA INALÁMBRICA *BLUETOOTH*® • CONFIGURACIÓN DE TECNOLOGIA WIRELESS *BLUETOOTH*® •  
DRAHTLOSE *BLUETOOTH*®-TECHNOLOGIE-SETUP • CONFIGURAZIONE TECNOLOGIA WIRELESS *BLUETOOTH*® •  
CONFIGURAÇÃO DE TECNOLOGIA SEM FIO *BLUETOOTH*® • *BLUETOOTH*® 蓝牙无线电技术 •  
*BLUETOOTH*® ワイヤレス技術



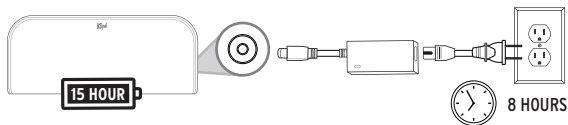
**\* Example only. Your device may differ.**

- À titre d'exemple seulement. Votre appareil peut être différent. • Este es solo un ejemplo. Es posible que su dispositivo sea diferente. • Nur als Beispiel. Ihr Gerät kann anders aussehen. • Solo a titolo esemplificativo. Lo specifico dispositivo può essere diverso. • Apenas para ejemplo. O dispositivo pode ser diferente. • 仅为示例。实际设备可能有所不同
- 例のみ: デバイスによって異なります



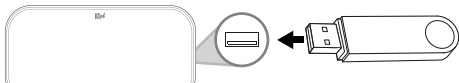
## BATTERY CHARGE

CHARGE BATTERIE • CARGA DE LA PILA • AKKULADESTAND • CARICA BATTERIA • CARGA DA BATERIA • 電池充電 • 充電



## USB AUDIO

AUDIO USB • AUDIO USB • USB-AUDIO • AUDIO USB • ÁUDIO USB • USB音频 • USBオーディオ



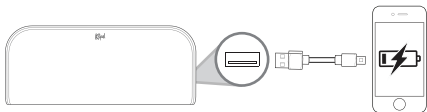
MP3	✓
WMA	✗
AAC	✗

WAV	✓
AIFF	✗
FLAC	✗



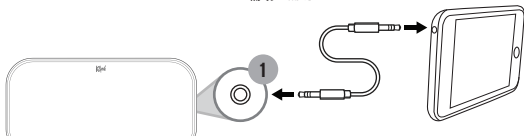
## USB CHARGING

CHARGE USB • CARGA USB • USB-AUFLADUNG • RICARICA USB • CARREGAMENTO USB • USB充电 • USB充電



## AUX IN

AUX IN • ENTRADA AUX • AUX IN • IN AUX • AUX IN • 辅助 • 補助



**\* 3.5mm cable not included**

Câble 3,5 mm non inclus

El cable de 3,5 mm no se incluye

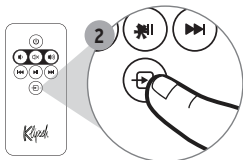
3,5-mm-Kabel nicht im Lieferumfang

Cavo da 3,5 mm non incluso

Cabo de 3,5 mm não incluído

不含 3.5mm 信号线

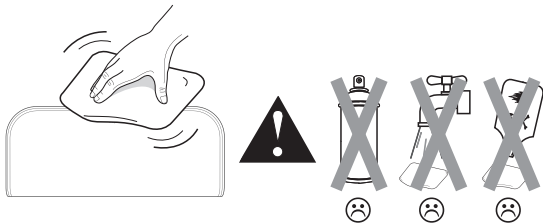
3.5mmケーブルは含まれていません



## CARE AND CLEANING

---

ENTRETIEN ET NETTOYAGE • CUIDADO Y LIMPIEZA • PFLEGE UND REINIGUNG • CURA E PULIZIA •  
CUIDADOS E LIMPEZA • 保养与清洁 • お手入れ





1. This device complies with Part 15 of the FCC Rules. Operation is subject to the following two conditions:

- (1) This device may not cause harmful interference, and
- (2) This device must accept any interference received, including interference that may cause undesired operation.

2. Changes or modifications not expressly approved by the party responsible for compliance could void the user's authority to operate the equipment.

NOTE: This equipment has been tested and found to comply with the limits for a Class B digital device, pursuant to Part 15 of the FCC Rules. These limits are designed to provide reasonable protection against harmful interference in a residential installation.

This equipment generates uses and can radiate radio frequency energy and, if not installed and used in accordance with the instructions, may cause harmful interference to radio communications. However, there is no guarantee that interference will not occur in a particular installation. If this equipment does cause harmful interference to radio or television reception, which can be determined by turning the equipment off and on, the user is encouraged to try to correct the interference by one or more of the following measures:

- Reorient or relocate the receiving antenna.

- Increase the separation between the equipment and receiver.

- Connect the equipment into an outlet on a circuit different from that to which the receiver is connected.

- Consult the dealer or an experienced radio/TV technician for help.

This equipment complies with FCC radiation exposure limits set forth for an uncontrolled environment. This equipment should be installed and operated with minimum distance 20cm between the radiator & your body.

This device contains licence-exempt transmitter(s)/receiver(s) that comply with Innovation, Science and Economic Development Canada's licence-exempt RSS(s). Operation is subject to the following two conditions:

- (1) This device may not cause interference; and
- (2) This device must accept any interference, including interference that may cause undesired operation of the device.

This equipment complies with IC radiation exposure limits set forth for an uncontrolled environment. This equipment should be installed and operated with minimum distance 20cm between the radiator & your body.

Cet appareil contient des émetteurs / récepteurs exemptés de licence conformes aux RSS (RSS) d'Innovation, Sciences et Développement économique Canada. L'exploitation est autorisée aux deux conditions suivantes :

- (1) l'appareil ne doit pas produire de brouillage, et
- (2) l'utilisateur de l'appareil doit accepter tout brouillage radio électrique subi, même si le brouillage est susceptible d'en compromettre le fonctionnement."

Cet appareil est conforme à IC l'exposition aux rayonnements limites fixées pour un environnement non contrôlé. Cet appareil doit être installé et utilisé avec une distance minimale de 20 cm entre le radiateur et votre corps. Cet transmetteur ne doit pas être co-situé ou opérant en liaison avec toute autre antenne ou transmetteur.