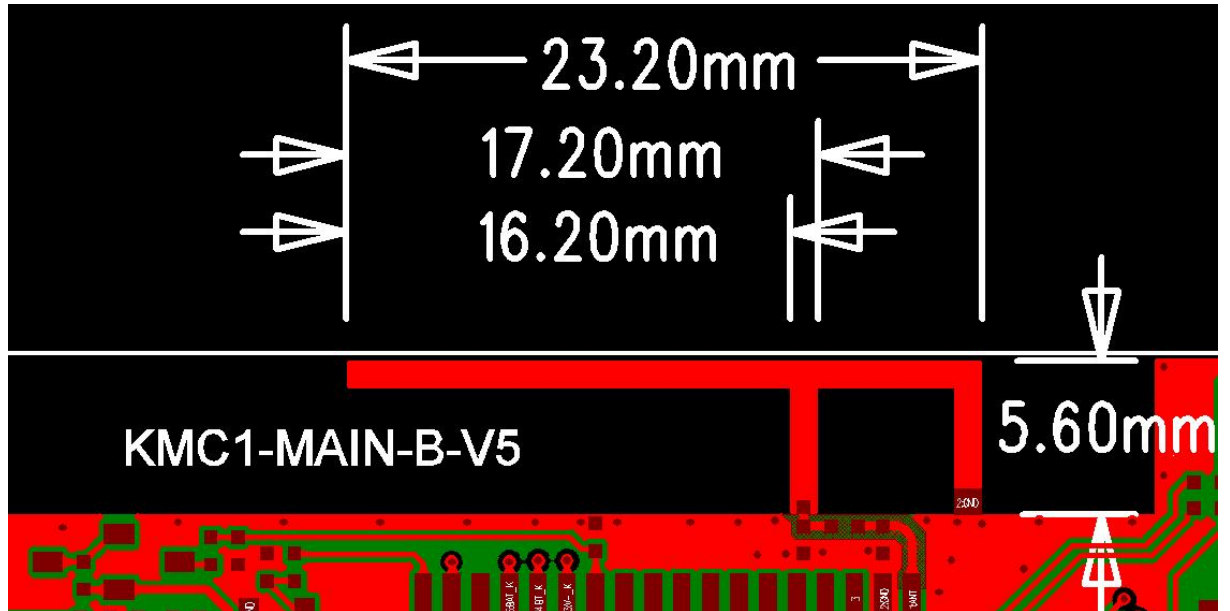


Applications

*Bluetooth products

*ISM band 2.4GHz applications

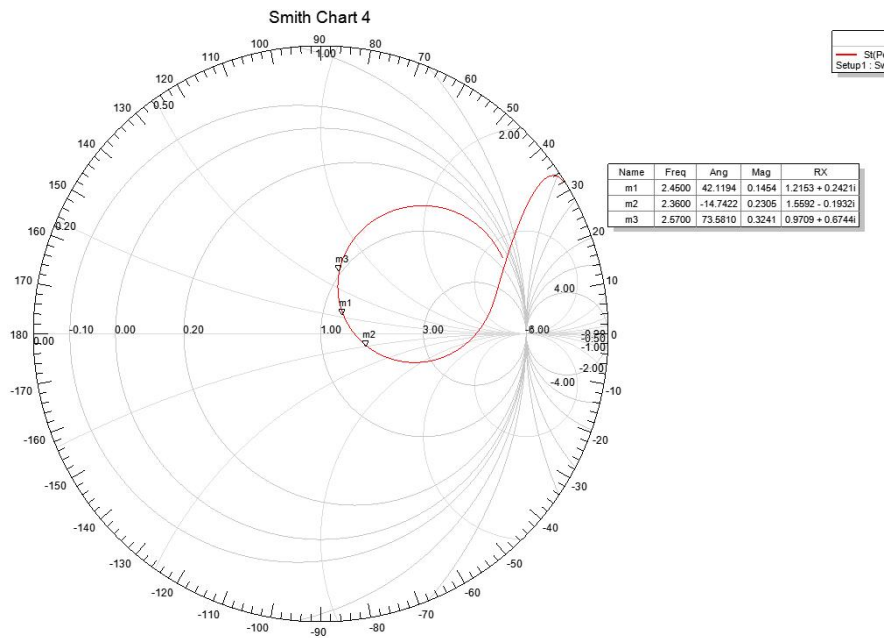
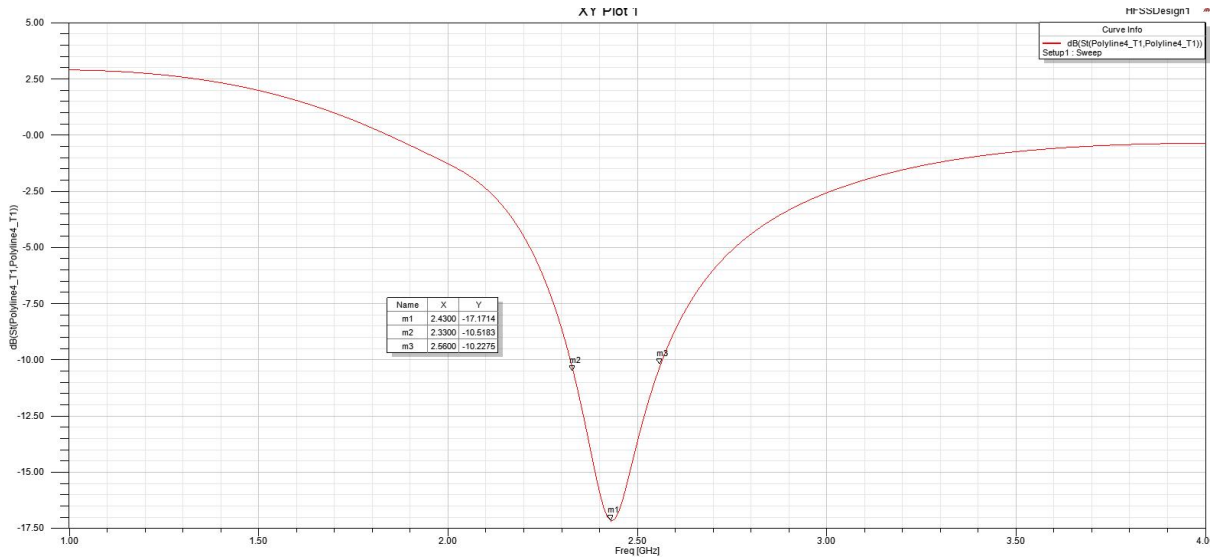
1. Dimensions



2. Specifications

Working Frequency Range	2.4 GHz ~ 2.5GHz
Gain	2 dBi (Typical)
VSWR	2 max.
Polarization	Linear
Azimuth Bandwidth	Omni-directional
Impedance	50Ω

3.Return Loss



4. Radiation Patterns

