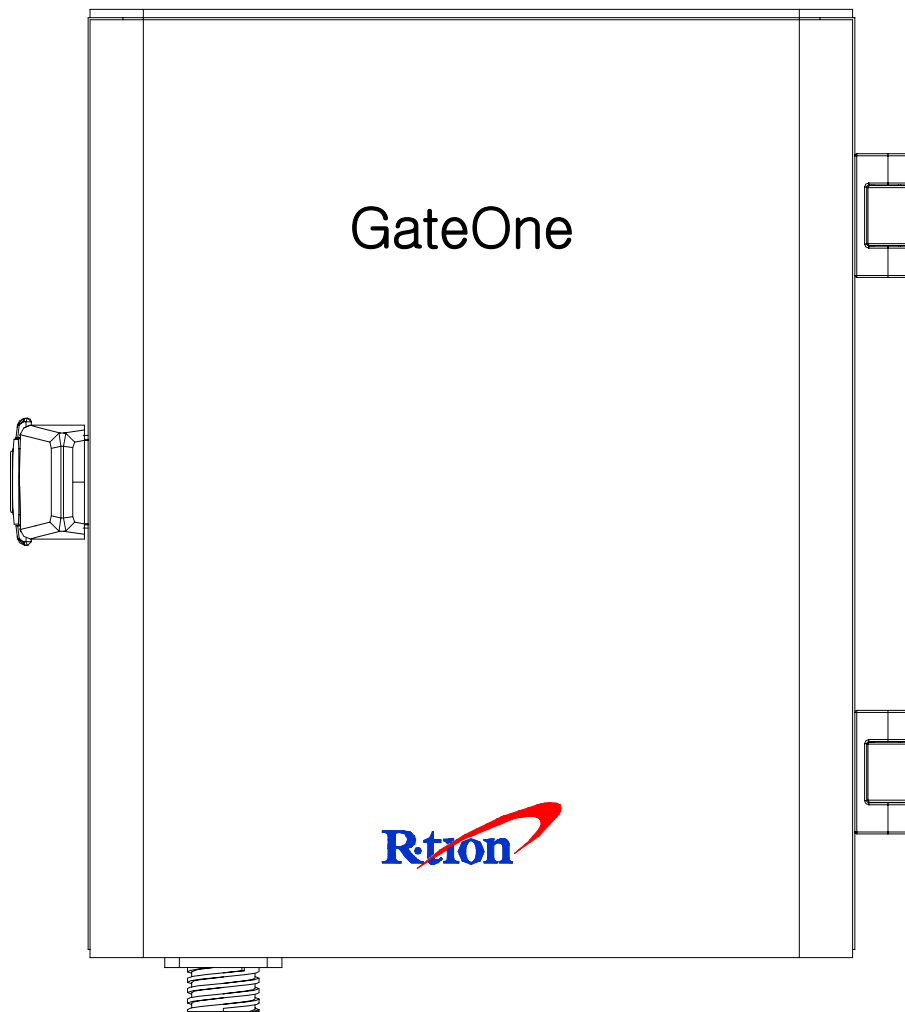


GateOne Manual



Contents

1. Configuration and Hardware connections 3

2. Setting for Command and Control 4

3. Web GUI pages..... 8

4. Specifications 14

Warning

Opening the Tri MINI could result in electric shock and may cause severe injury.

Warning

Connect the equipment frame ground to building ground.

Warning

Operating the Tri MINI with antennas in very close proximity facing each other could lead to severe damage to the repeater.

Caution

RF EXPOSURE INFORMATION

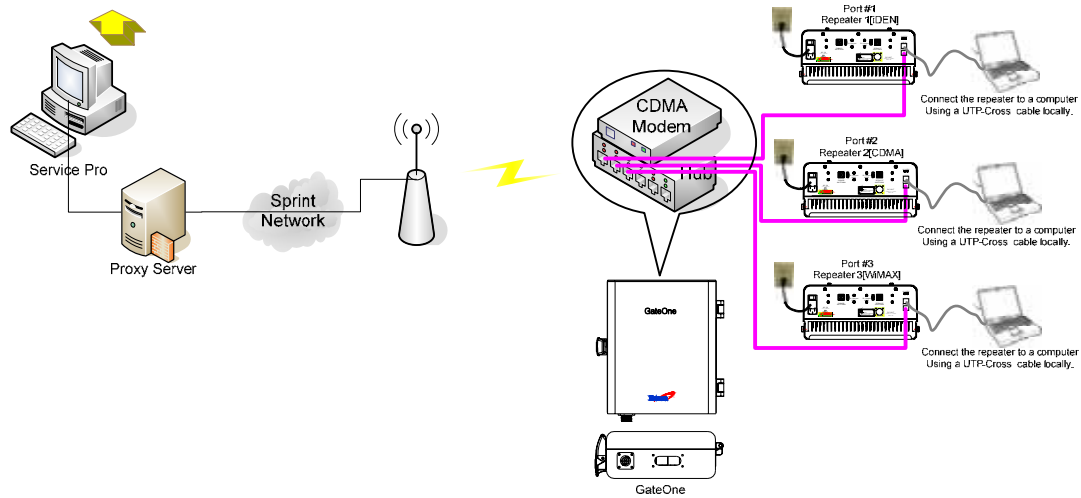
A minimum separation distance of 7.9 inches (20cm) must be maintained between the user and the external antenna of repeater to satisfy FCC RF exposure requirements. For more information about RF exposure, please visit the FCC website at www.fcc.gov

Caution

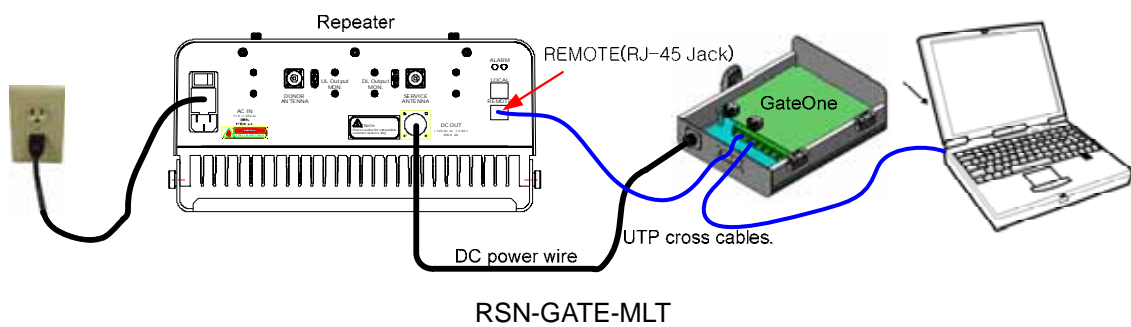
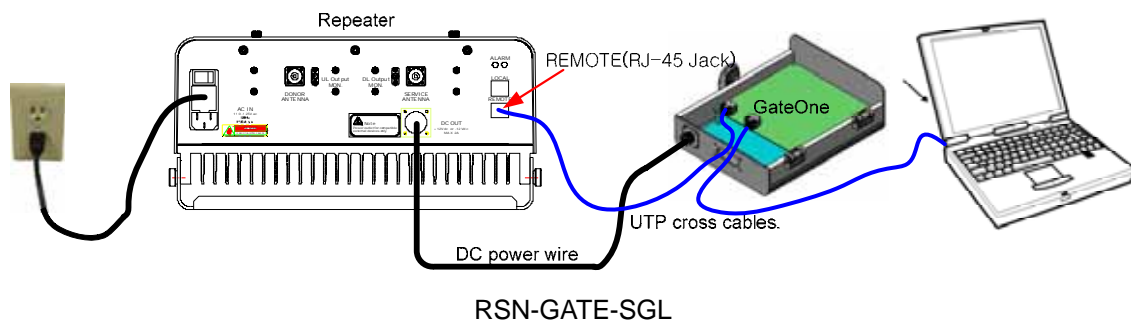
This equipment is for indoor use and enables the communication wiring to communicate only inside the building.

1. Configuration and Hardware connections

* Overall configuration



* Hardware connections



* GateOne backwards compatibility with HB1900.

2. Setting for Command and Control

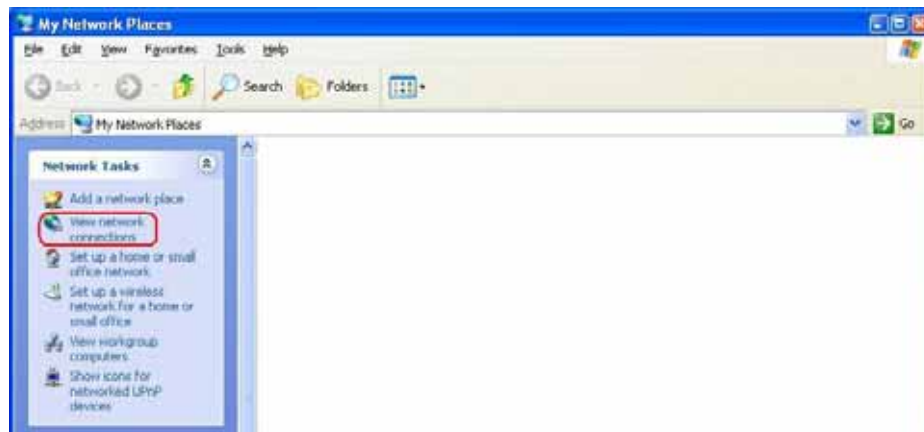
* GateOne operates on a customer provided PC based platform with the following system requirements.

Windows® XP	Strong recommended
128 MB RAM or more	
Pentium III processor or more	keyboard
RJ-45 jack	

Step 1 Open My Network Places.



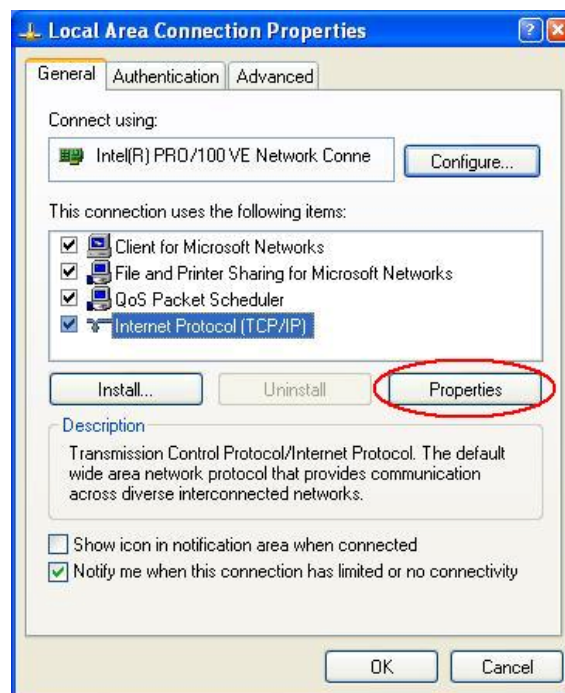
Step 2 Click the “View network connections”.



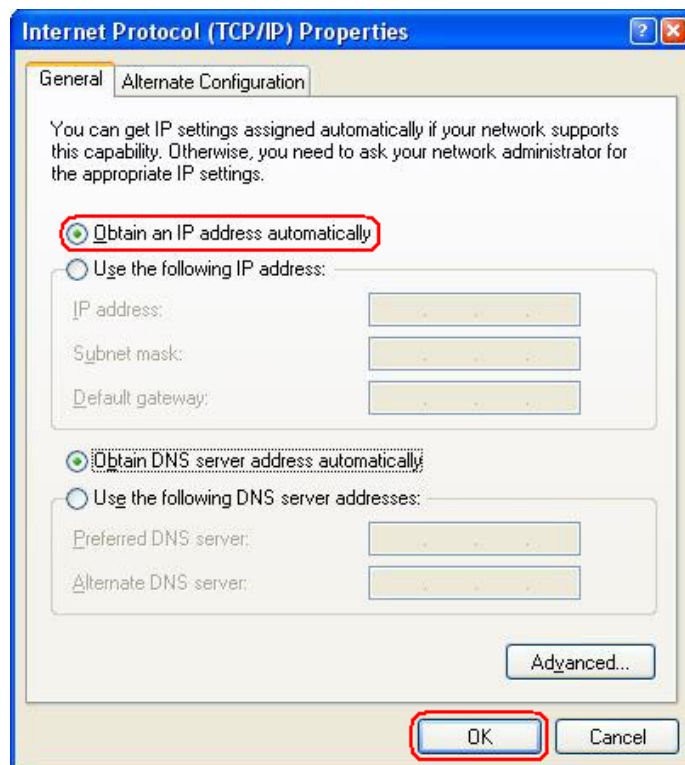
Step 3 Push the right button of mouse and select the properties.



Step 4 Click the properties of TCP/IP.



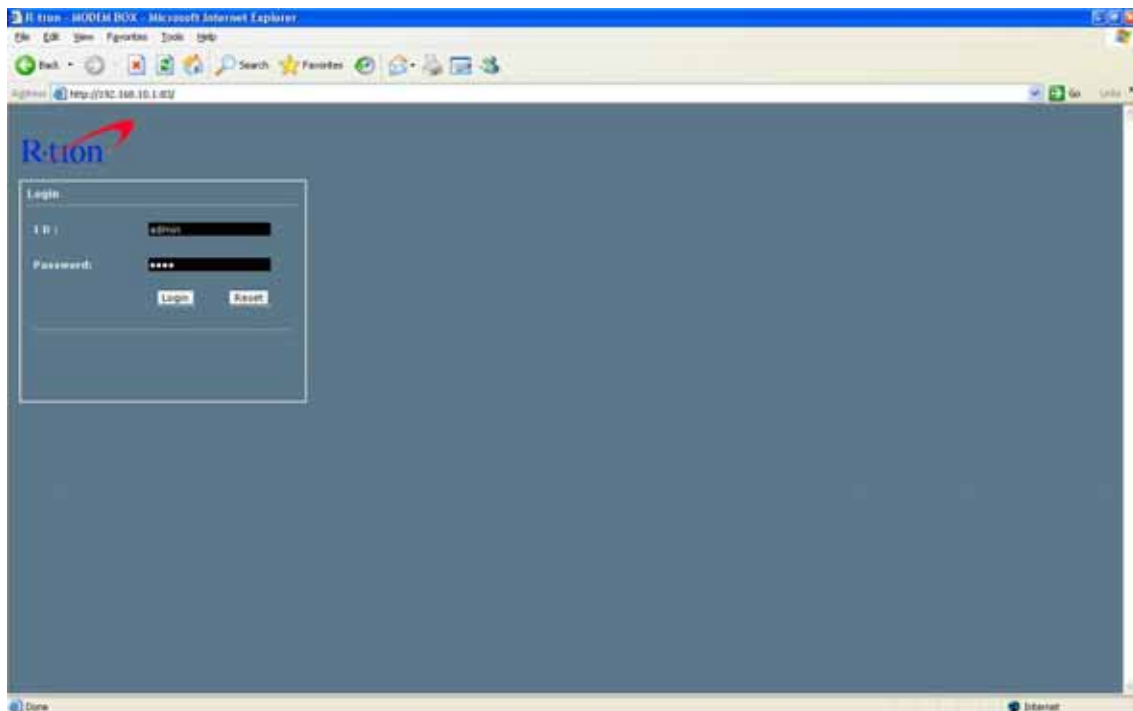
Step 5 Set the values and OK as the following. Close all windows.



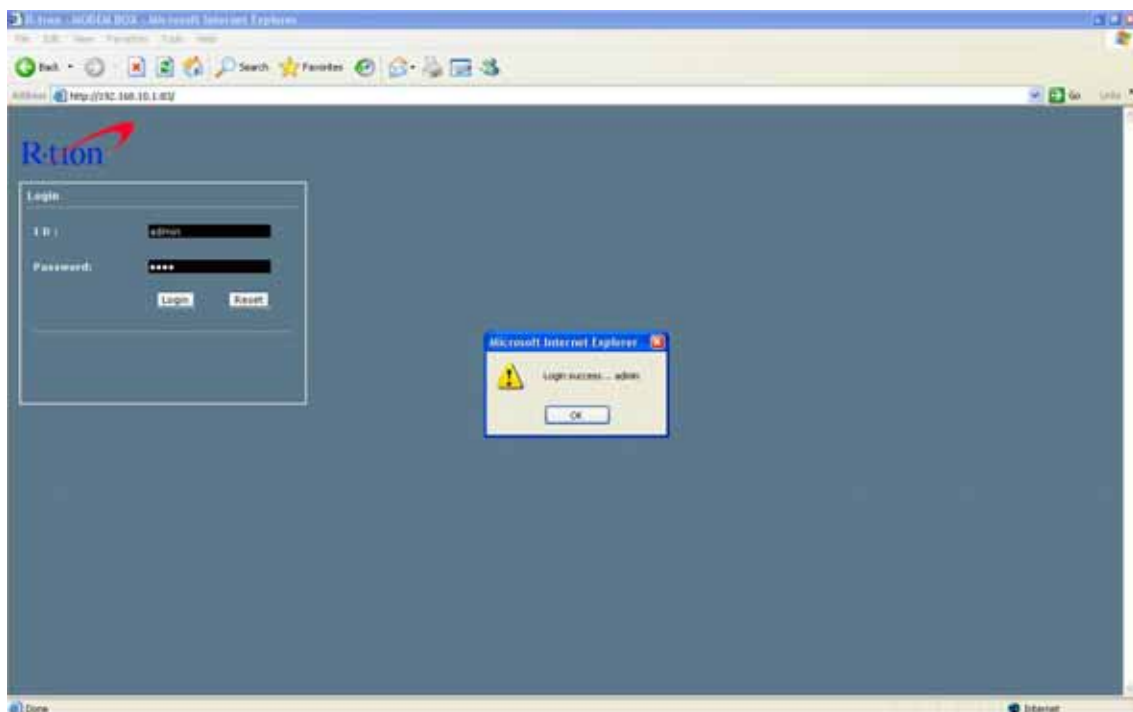
Step 6 Open a new explorer window.



Step 7 Type <http://192.168.10.1:83> in the address box and press “Enter” key.



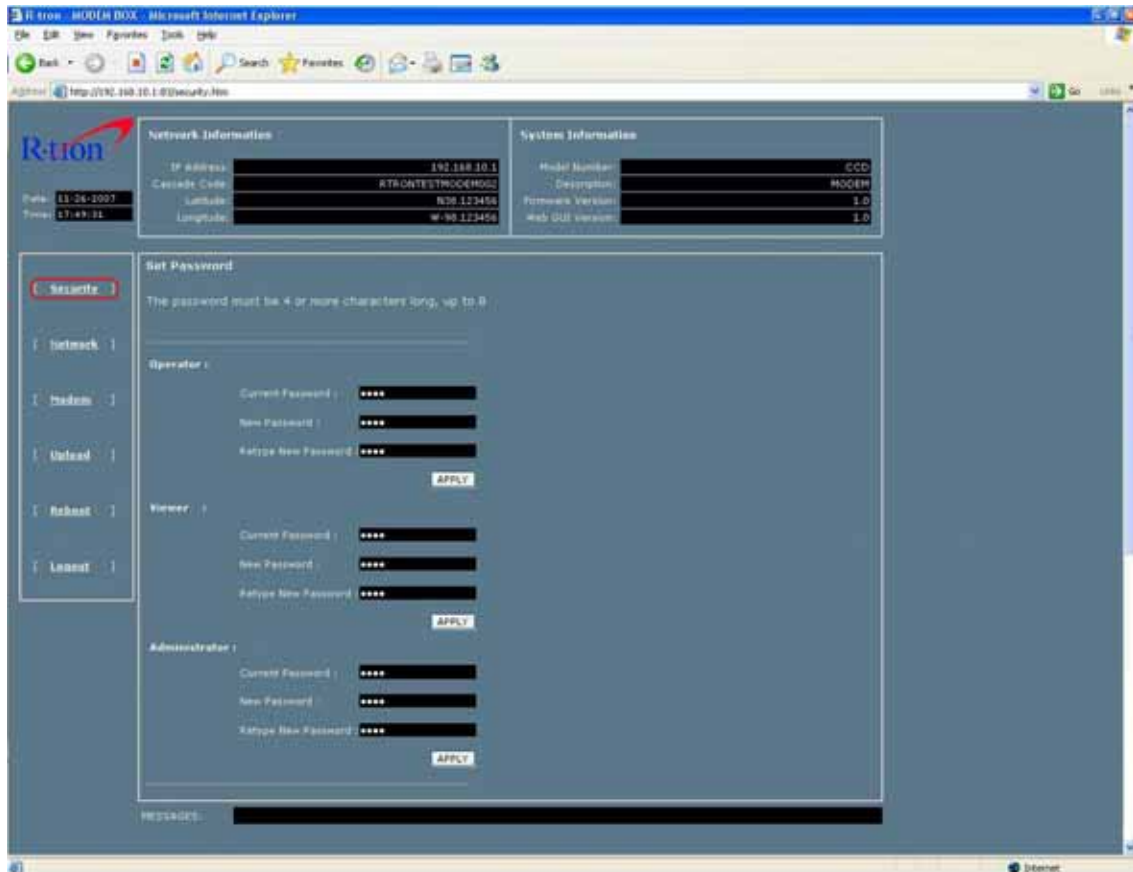
Step 8 Login with “admin” of ID and “1234” of password and “OK”.



3. Web GUI pages.

A. Security page

Three logon passwords; Operator, Viewer, and Administrator, can be authorized on the security page.



* Logon as Operator: An operator has all authorization of changing, monitoring, and controlling except parameters on the Security page.

* Logon as Viewer: Viewer is able to show the information of MODEM box only.

* Logon as Administrator: Administrator has all authorization of changing, monitoring, and controlling.

B. Network page

The screenshot shows a web browser window titled "R-tion - MODER BOX - Microsoft Internet Explorer". The address bar shows "http://192.168.10.1:82/emp.htm". The page has a blue header with the "R-tion" logo. On the left is a navigation menu with links: "Security", "Network" (highlighted with a red box), "Modem", "Upload", "Reboot", and "Logout". The main content area is divided into two columns. The left column is titled "Network Information" and contains fields for "IP Address", "Cascade Code", "Latitude", and "Longitude". The right column is titled "System Information" and contains fields for "Model Number", "Description", "Firmware Version", and "Web GUI version". Below these is a "Network Setup" section with four sub-sections: 1. Cascade Code (with an "APPLY" button), 2. Location Information (with fields for Latitude and Longitude, and an "APPLY" button), 3. Heartbeat Interval (1 - 99 minutes) (with an "APPLY" button), and 4. Product Information (with fields for Model Number, Description, and Serial Number, each with an "APPLY" button). At the bottom of the "Network Setup" section is a field for "NMC IP Address (option)" with an "APPLY" button. A "MESSAGES:" section is at the very bottom.

a. **Cascade Code:** Type in the pre-assigned code. **Otherwise, you cannot access system setup.**

b. **Location Information:** Takes the latitude and longitude, **otherwise you cannot access system setup.**

[Example]

(N/S' | 'E/W') (+|-) ddd.dddddd: (Latitude: N 39.006597 Longitude: W 122.152390)

c. **Product Information:** This is for manufacturer used only. Do not change this value.

d. **NMC Server IP:** Do not change the value. Otherwise Remote Access may not work.

C. Modem page

The Modem Page shows totally all information related with repeater and other devices.

The screenshot shows the R-Stream Modem Box web interface. The browser window title is "R-Stream - MODEM BOX - Microsoft Internet Explorer". The address bar shows "http://192.168.10.1:82/modem.htm".

Network Information:

IP Address	192.168.10.1
Cascade Code	STRONTESTMODEM002
Latitude	N38.123456
Longitude	W-90.123456

System Information:

Model Number	CCD
Description	MODEM
Firmware Version	1.0
Web GUI Version	1.0

1. Modem Status:

RF Mode	Deep Mode	MDN	9133264726
Band Class	1900 MHz PCS	ESN Hex	0a5250890
SSN	4139	ESN Decimal	0a5250890
NR	41	Local Time	2007-11-26 17:53:01
Receive PPR[N]	0	Phone Status	Idle
TX Power	-70dBm	Call Type	Data
TX Power Adjunct	-63dB	Call Status	Idle
SCI	2	Data Call Type	Data Service is not in any call
Mod PM (Pilot)	183	Data Call Status	Dormant
SVC Option	0	Active PM	103 100 0 0 0 0
Ex/In	-3.0 db	Forward Data Rate	9600
Channel	200	Reverse Data Rate	9600
Call Drop Reason	Received release from base station-No reason given/normal		

2. HeartBeat Transmission History:

2007-11-26 17:53:04 Heartbeat has been transmitted.

3. Modem Restart:

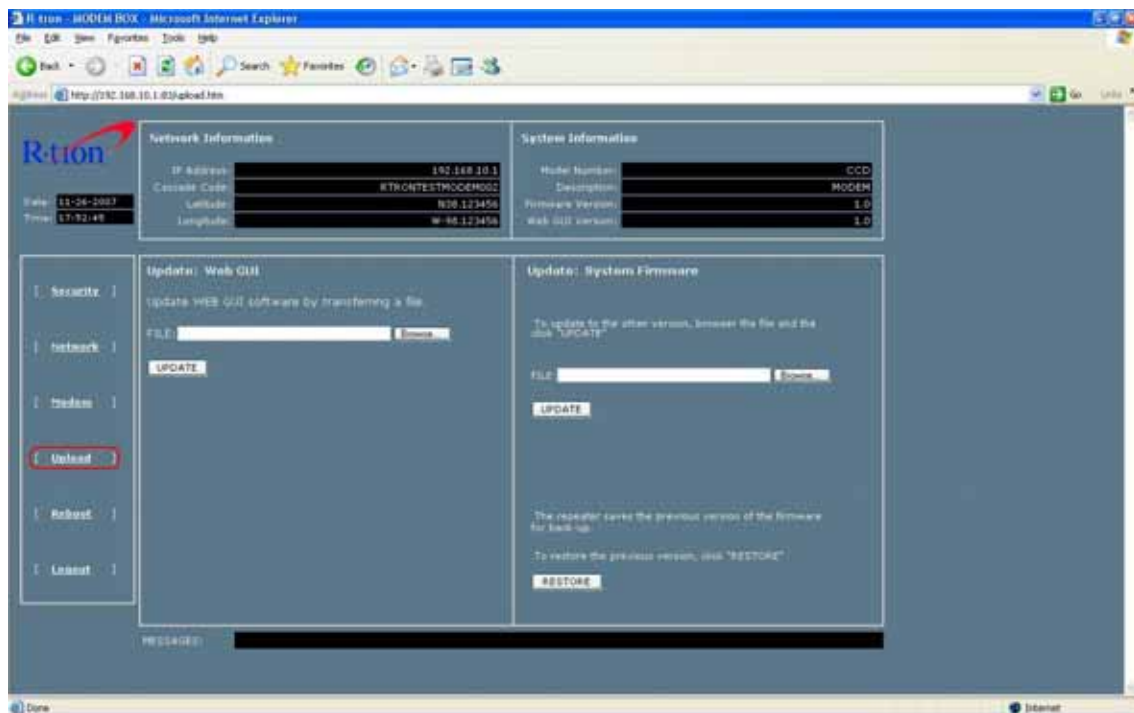
4. Call drop reason History:

0	2007-11-17 20:55:50	Client ended the call
1	2007-11-17 20:57:20	Received release from base station-No reason given/normal
2	2007-11-18 13:48:07	Call has ended abnormally
3	2007-11-18 13:51:07	Received release from base station-No reason given/normal
4	2007-11-18 21:52:03	Client ended the call
5	2007-11-18 21:59:32	Received release from base station-No reason given/normal
6	2007-11-18 22:22:00	Client ended the call
7	2007-11-18 22:42:24	Received release from base station-No reason given/normal
8	2007-11-18 23:14:21	Client ended the call
9	2007-11-18 23:19:51	Received release from base station-No reason given/normal
10	2007-11-18 23:44:20	Client ended the call
11	2007-11-18 23:45:50	Received release from base station-No reason given/normal
12	2007-11-19 00:14:10	Client ended the call
13	2007-11-19 00:15:50	Received release from base station-No reason given/normal
14	2007-11-19 02:16:32	Client ended the call
15	2007-11-19 02:18:03	Received release from base station-No reason given/normal

MESSAGES:

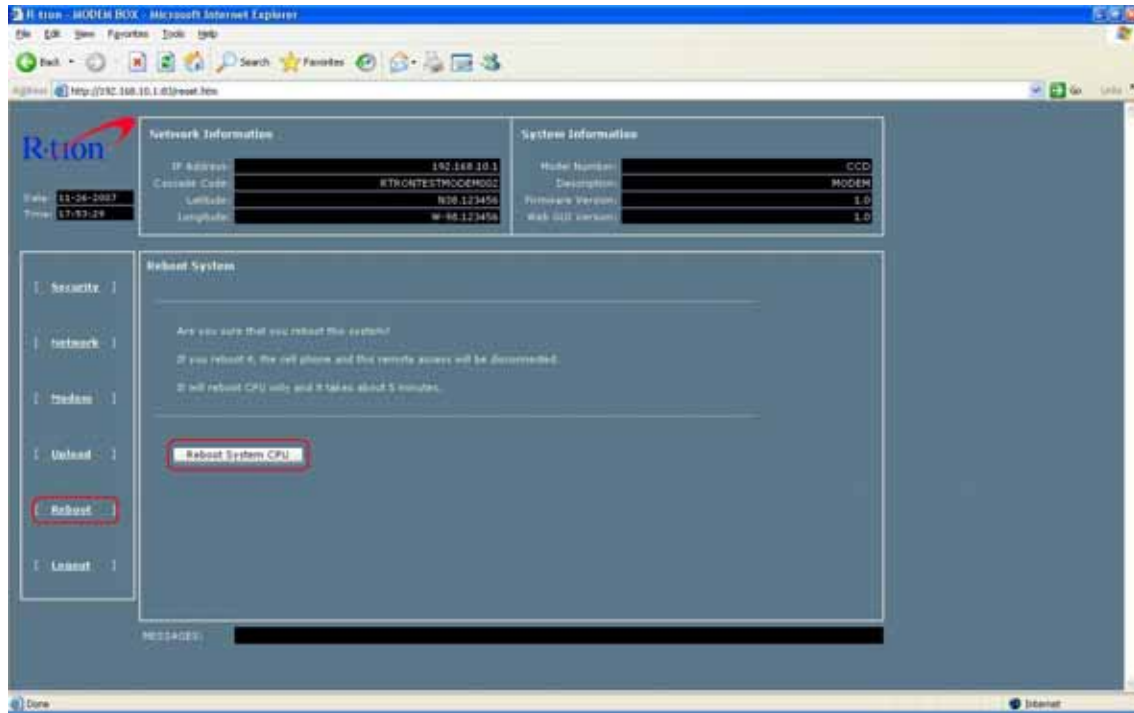
D. Upload page

The newest Web GUI and System firmware are able to be updated on this page.



E. Reboot page

Clicking "Reboot System CPU" makes restart up the operating system on the Micro Processor Unit.



F. Logout

Click the "Logout" and press the "OK" to exit current logon.



4. Specifications

a. Electrical Specification

Item	Specifications	Remark
CPU	S3c2410A: 16/32-bit RICS	
Memory	NOR Flash: 4M byte	Boot Loader, Linux Kernel
	NAND Flash: 32M byte	Ram disk, Application Program
	SDRAM: 32M byte	
Local Craft Port	RJ-45	
External Repeater port	RJ-45 8port HUB	IEEE 802.3 10Base-T
Modem	Kyocera M200	
Power supply	DC +12V / Max 1A	
Operating temperature	-10 ~ 50	
Storage temperature	-20 ~60	
Humidity	95 %	

b. Mechanical Specification

Item	Specification	Remark
Dimension	180(W)x230(D)x80(H)_mm 7.08(W)x9.05(D)x3.15(H)_inch	Not commercial product
Weight	2kg (4.4lbs)	
Power Supply Connector	4 pin AMP connector (female Type)	AMP 206430