

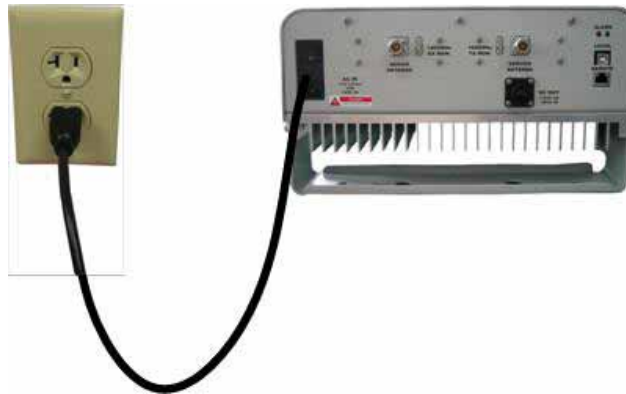
RSN-CDMA-30-C

Tune-Up Procedure

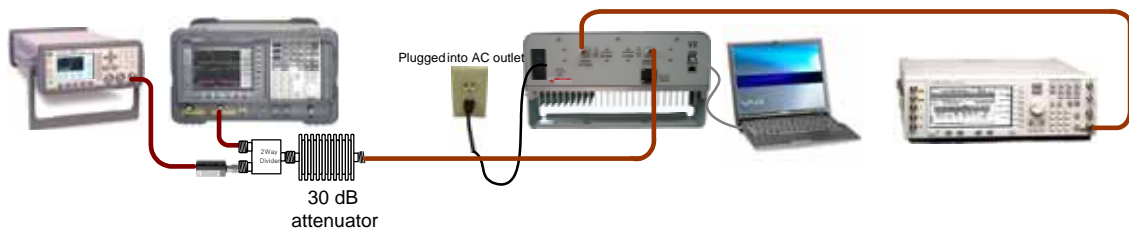
R-tron Inc.

1. Power On

- a. Connect the power cord.
- b. Plug the power cord into a wall outlet.
- c. Switch on.
- d. Check if the green LED at the bottom turns on.



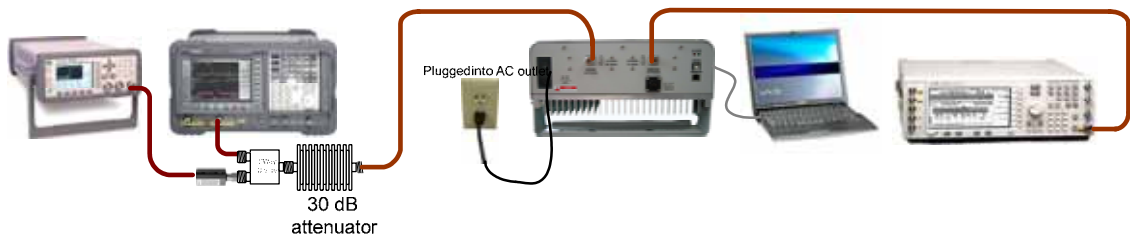
2. DL Test Configurations



◆ DL Gain Specification

Parameter	Down Link
Gain	90dB
Input Level	Output Level
-60dBm	30dBm

3. UL Test Configurations



◆ UL Gain Specification

Parameter	Down Link
Gain	90dB

Input Level	Output Level
-60dBm	30dBm

4. Setting for Command and Control through the Web GUI

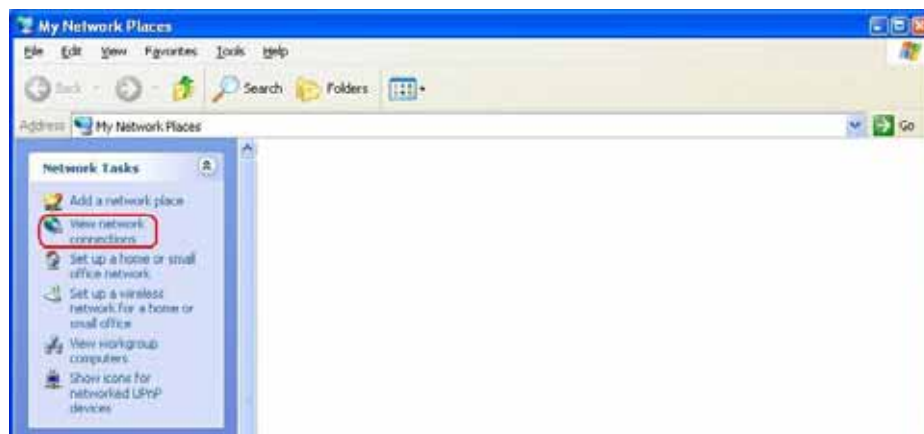
* CDMA MINI operates on a customer provided PC based platform with the following system requirements.

Windows® XP	Strong recommended
128 MB RAM or more	
Pentium III processor or more	keyboard
RJ-45 jack	

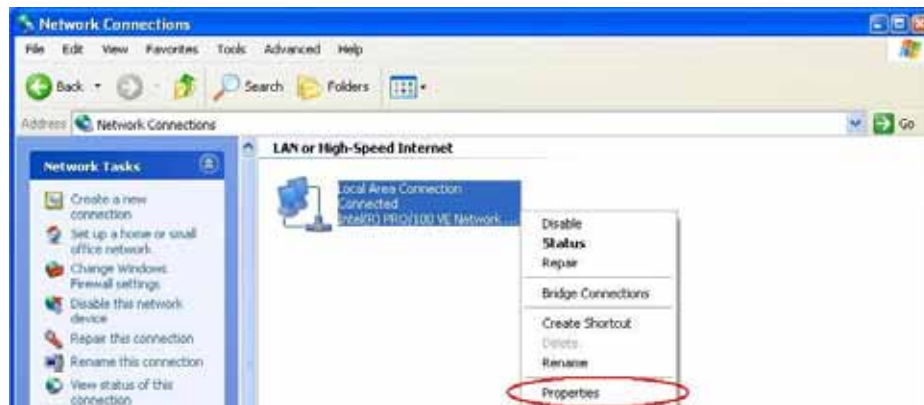
Step 1 Open My Network Places.



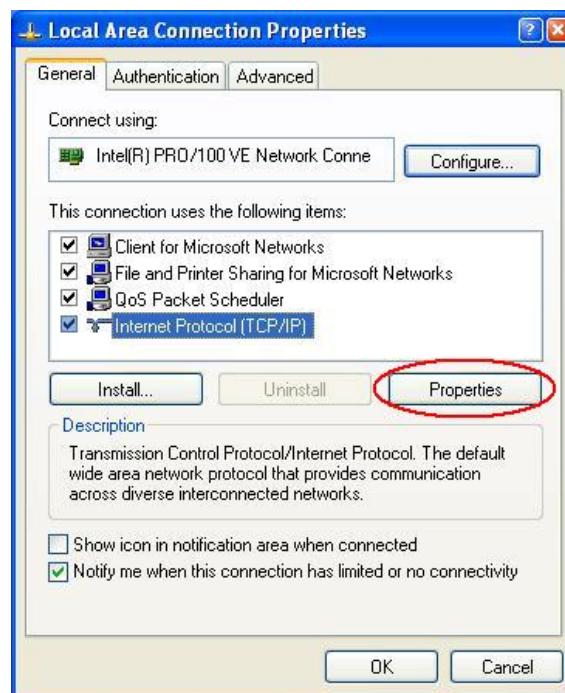
Step 2 Click the “View network connections”.



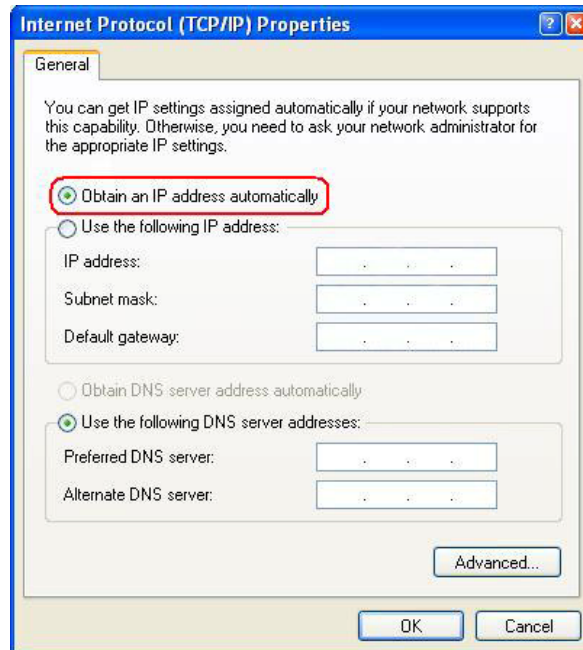
Step 3 Push the right button of mouse and select the properties.



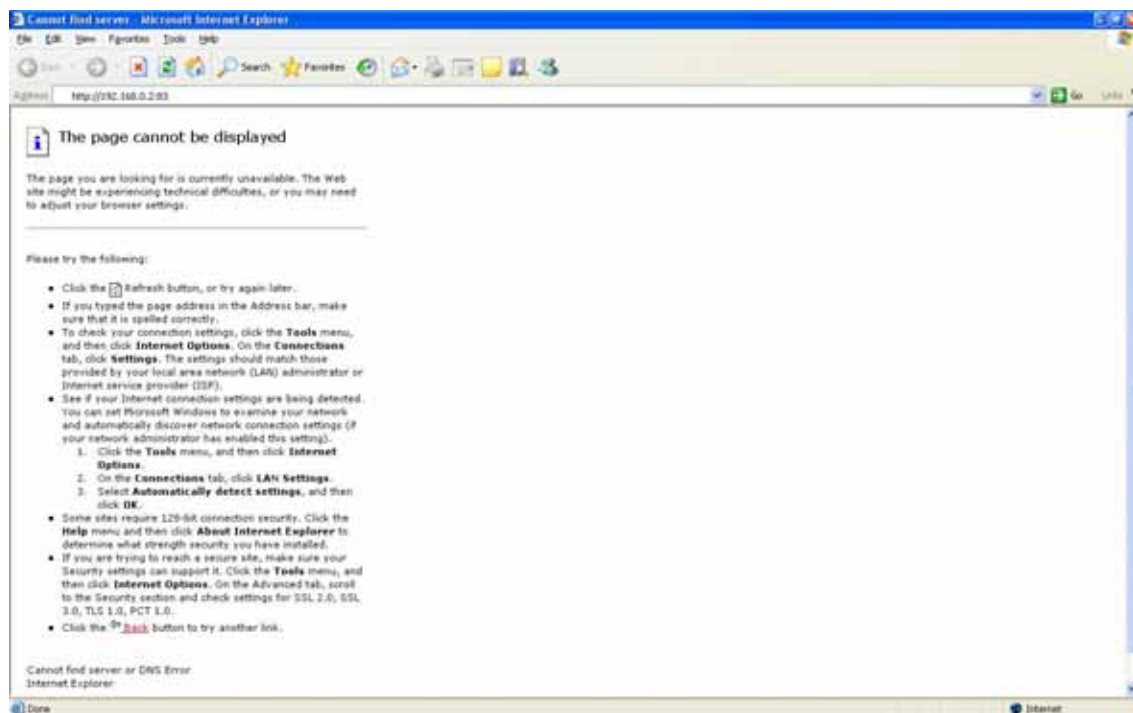
Step 4 Click the properties of TCP/IP.



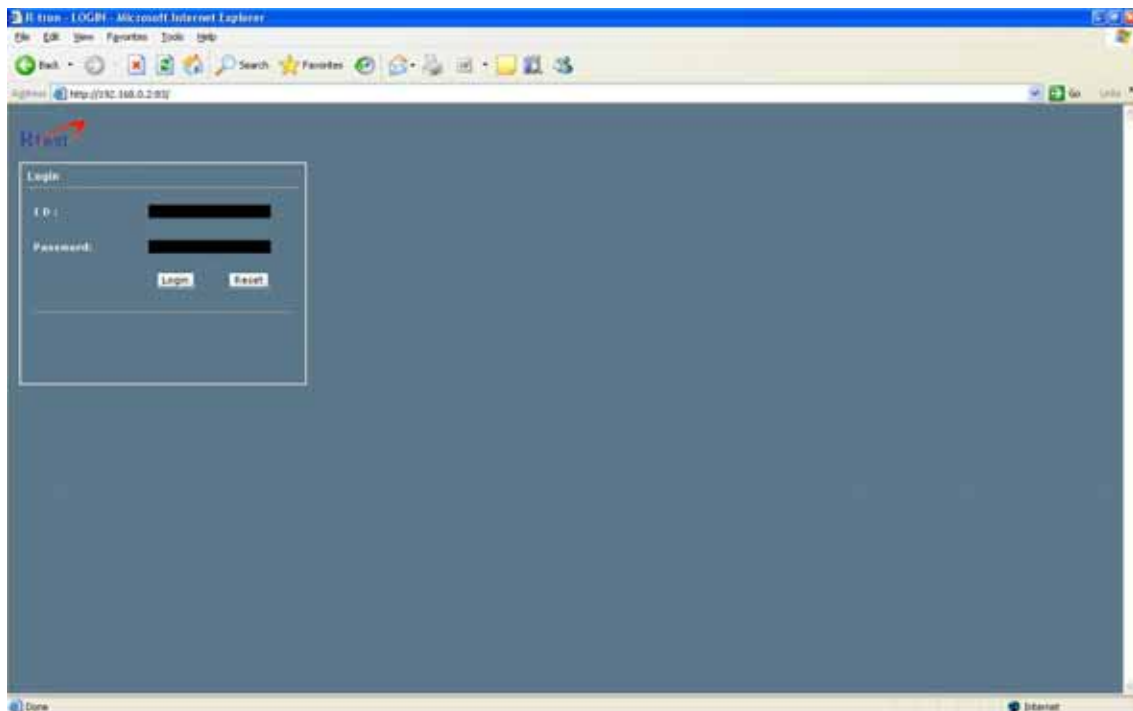
Step 5 Set the values and OK as the following. Close all windows.



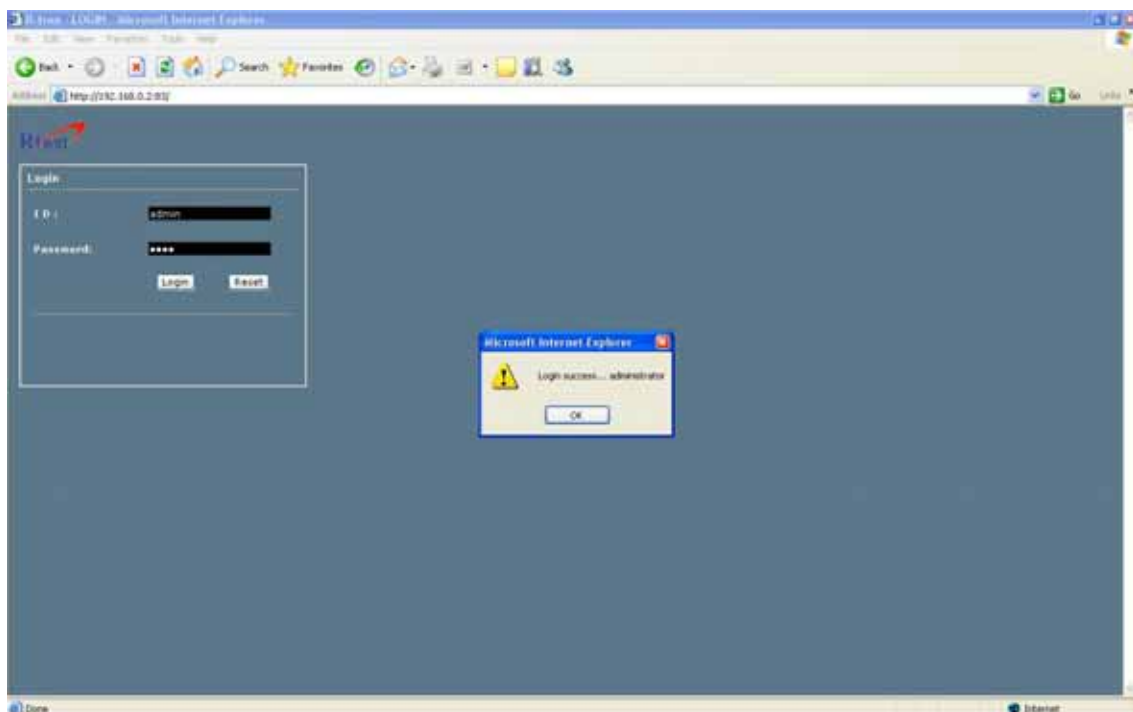
Step 6 Open a new explorer window.



Step 7 Type <http://192.168.0.2:83> in the address box and press “Enter” key.



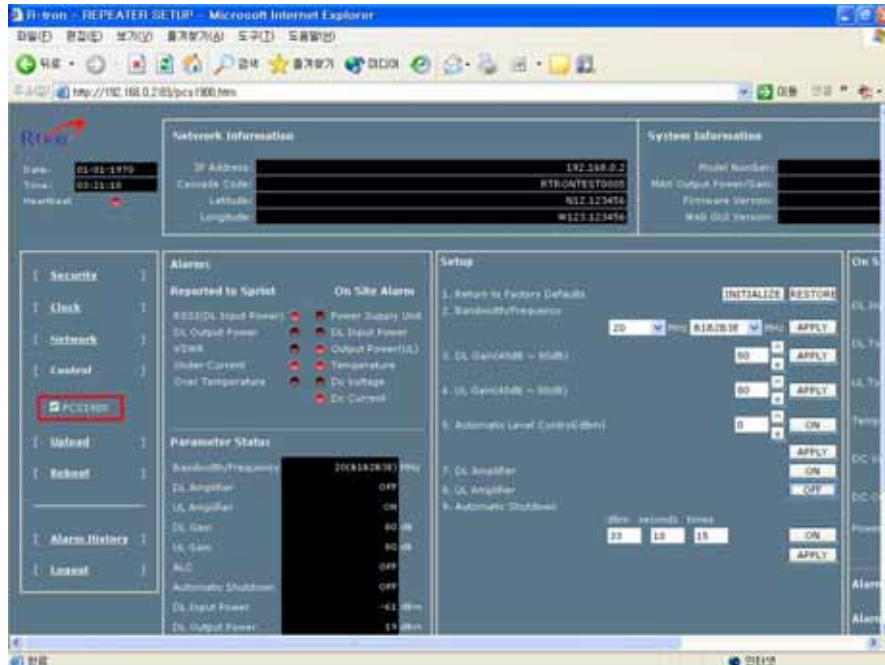
Step 8 Login with “admin” of ID and “1234” of password and “OK”.



5. Command and Control on the Web GUI

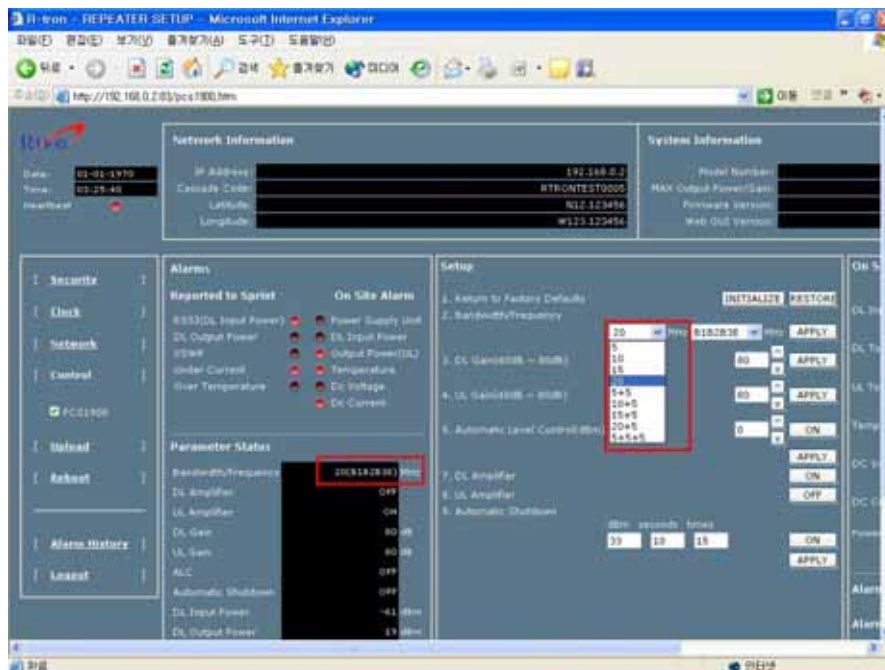
5.1 DL and UL Bandwidth Selection

a. To control the CDMA MINI, check the box of PCS 1900.

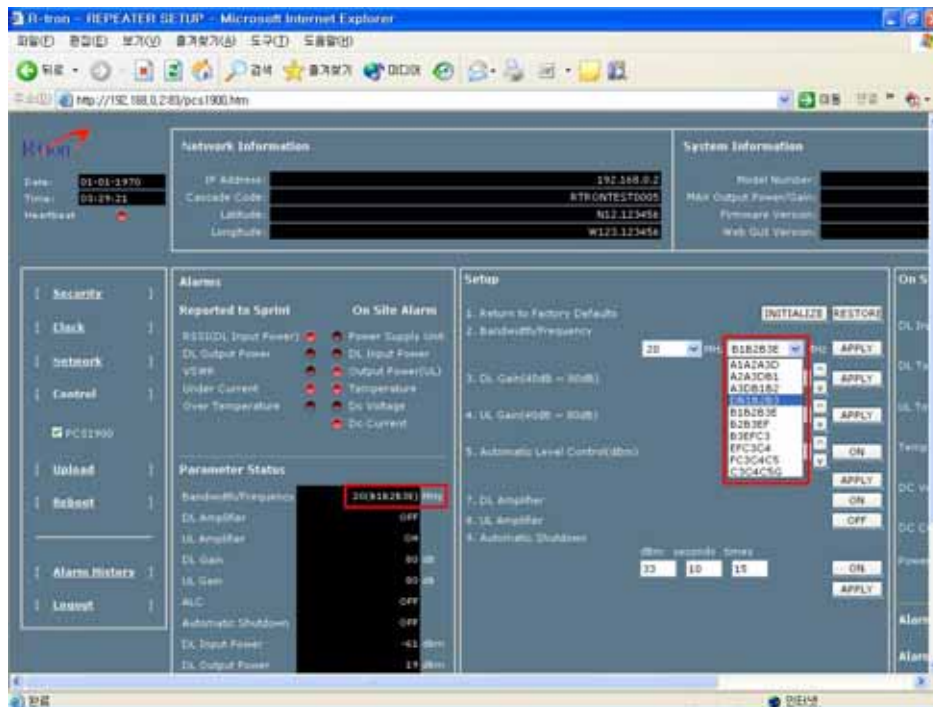


b. The operating bandwidth, 5MHz, 10MHz, 15MHz, 20MHz, 5+5MHz, 10+5MHz, 15+5MHz, 20+5MHz, 5+5+5MHz bandwidth is possibly selected.

Select the operating bandwidth and push the "APPLY" and check the bandwidth.

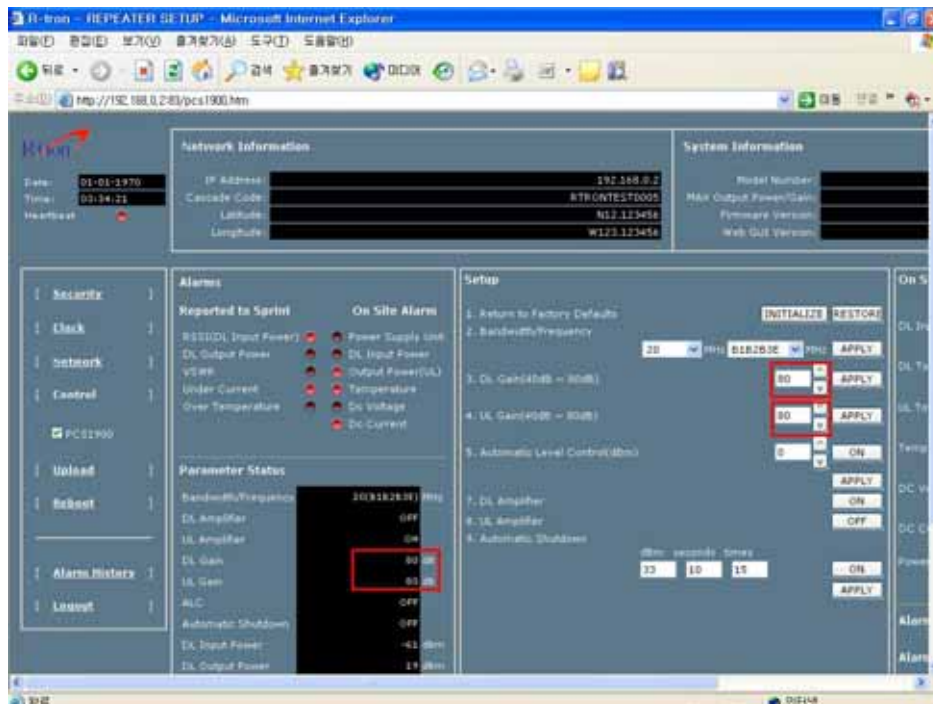


c. The operating frequency is able to be selected. Select the operating frequency and push the “APPLY” and check the bandwidth and frequency.



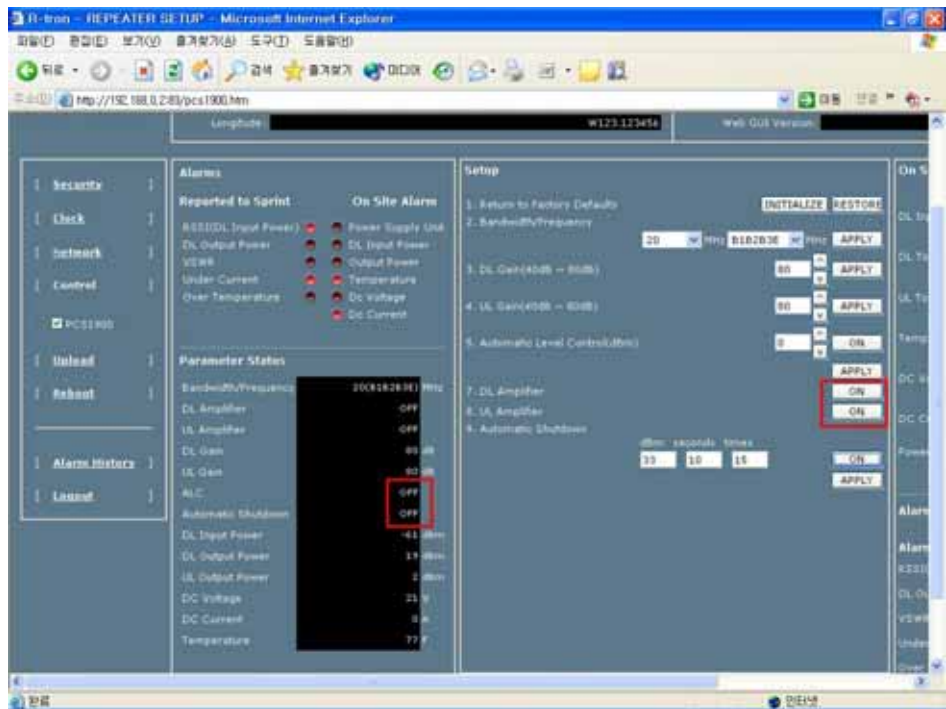
5.2 DL and UL DL and UL gain setting

a. Set the DL gain and UL gain, 50dB to 90dB, and push the “APPLY” button.



5.2 HPA On and OFF

a. Press the “ON” and “OFF” and check the status.



The maximum output power for operating is +30dBm on both DL and UL.