

DIGITAL WIRELESS

Tag It. Don't lose it.™

TagAlert™ LAPTOP TAG

TAG
Attaches to
your **laptop**



ABOUT 10FT - 100FT
ADJUSTABLE RANGE



**Alerts when laptop is
left behind or taken**

MONITOR
Alarms when
laptop is
left behind



- Two range alert setting from 10-100 feet
- Ability to add another TAG
- TagAlert™ technology for accuracy and privacy
- Small and discreet

Peace of Mind While

Traveling — cabs, cars, trains, and planes

Around and About — restaurants, parks, the neighbors house

...Don't leave home without it!


remoteplay™
smart wireless solutions™

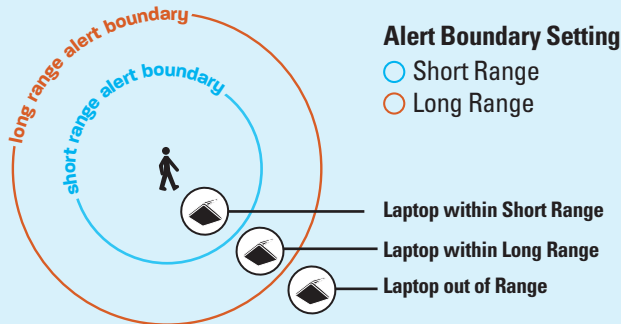
Peace of Mind While

Traveling — cabs, cars, trains, and planes
Around and About — restaurants, parks, the neighbors house

...Don't leave home without it!

TagAlert™ PROXIMITY TECHNOLOGY:

Revolutionary patent pending technology creates a secure safety zone through non-stop contact with your tagged laptop. Your **MONITOR** alarms to let you know when your tagged laptop goes outside of the pre-set Safety Zone.



ADJUSTABLE DISTANCE:

TagAlert™ provides you the flexibility to determine the Safety Zone for a particular environment by offering a choice of either a short (~10-30 ft) or long (~50-100 ft) range setting.

SNOOZE FEATURE:

With the press of a button on the **MONITOR**, you can temporarily disable the alarm when you intentionally walk away from your laptop. The alarm will automatically resynchronize and reset when you return to the Safety Zone.

ONE YEAR BATTERY LIFE:

The revolutionary battery usage of TagAlert™ lets you run both the **MONITOR** and **TAG** for a year. Batteries are included.

MANY TAGS WORK TOGETHER:

TagAlert™ technology makes sure your **MONITOR** only tracks your **TAG(S)** and does not get confused with any other **TAG**. Will not interfere with your cell or cordless phones.

EXTRA TAGS:

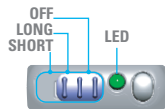
Can be ordered separately and will work with your **MONITOR**. See www.remoteplay.com, or call 1-800-000-0000.

Easy To Use:

Please read instructions and warnings inside before use.

Step 1

Slide switch on **MONITOR** to "SHORT" or "LONG." LED will blink to indicate that device is on.



Step 2

If **TAG** exceeds the "SHORT" or "LONG" range, **MONITOR** will alarm.



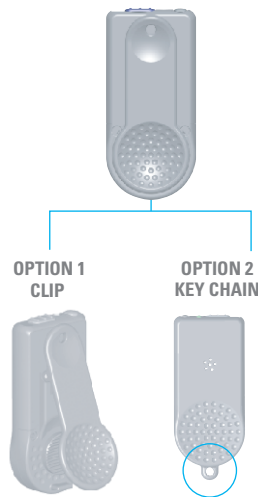
Step 3

Press **SNOOZE** to temporarily silence alarm or prevent it from going off when intentionally walking away. Tag will resynchronize once back in safe zone.



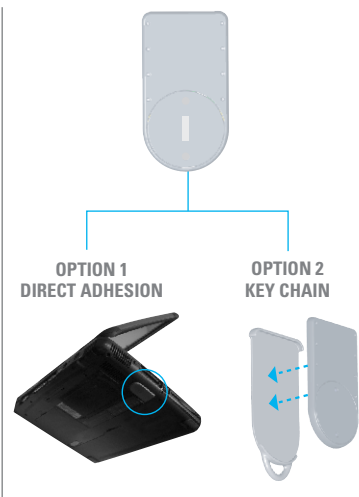
MONITOR ATTACHMENT OPTIONS

(see inside for instructions)



TAG ATTACHMENT OPTIONS

(see inside for instructions)



Remote Play, Inc. and TagAlert™ are trademarks of Remote Play, Inc. Patents pending.

Copyright © 2005 Remote Play, Inc. All rights reserved. Custom manufactured in China for Remote Play, Inc.

UPC

ATTACHMENT OPTIONS (see diagram below)

MONITOR

If you prefer, change between Clip **C** and Key Chain **D** holding options by unscrewing **MONITOR** **B** battery door.

TAG

Key Chain Option: Snap Key Chain attachment **K** on to back of **TAG**.

Adhesive Option: Peel off **TAG** adhesive seal **I** and stick to desired surface.

CAUTION: Adhesive is VERY strong. Make sure of location before sticking on **TAG**.

TESTING SYSTEM (see diagram below)

Turn **MONITOR** to "SHORT" **E** setting while **TAG** is about 1 foot away. A single "beep" will sound and LED **F** will start blinking. Holding **MONITOR** **A**, begin walking away from **TAG** **L**. Note distance alarm **A** goes off for your "SHORT" setting. Turn **MONITOR** to "LONG" **E** setting and continue walking away. Note distance alarm **A** goes off for your "LONG" setting.

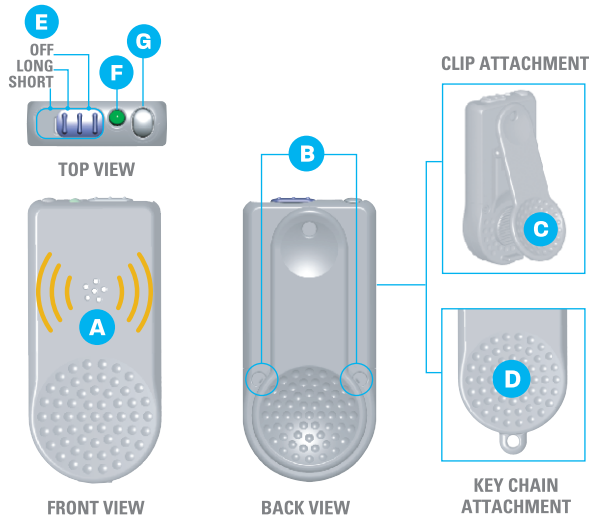
ACTIVATING TAG (see diagram below)

Pull battery protective strip **H** to turn **TAG** on.

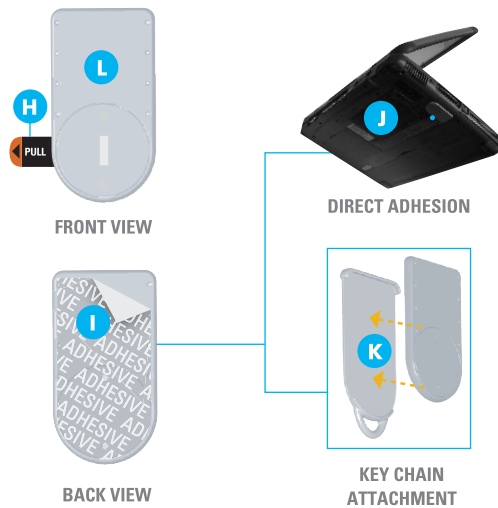
Remote Play, Inc. and TagAlert™ are trademarks of Remote Play, Inc. Patents pending.

Copyright © 2005 Remote Play, Inc. All rights reserved. Custom manufactured in China for Remote Play, Inc.

MONITOR DIAGRAM



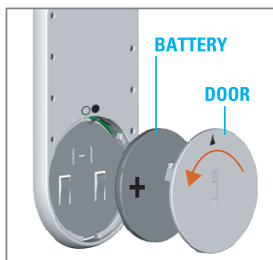
TAG DIAGRAM



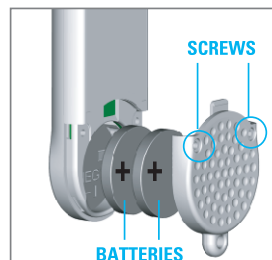
Troubleshooting:

PROBLEM	CAUSE	SOLUTION
<i>MONITOR</i> does not make a sound	<i>MONITOR</i> battery is dead	Replace <i>MONITOR</i> battery
<i>MONITOR</i> alarm always on when <i>MONITOR</i> is on	<i>TAG</i> battery is dead	Replace <i>TAG</i> battery
<i>MONITOR</i> beeps once an hour or once a minute	<i>MONITOR</i> battery is getting low	Replace <i>MONITOR</i> battery

Replacing the Batteries:



TAG: To open, use a coin to turn door counterclockwise so arrow **A** points to "O". Replace the 1 x CR2016 battery with "+" facing up, replace battery and twist to "●" to lock.



MONITOR: Unscrew the two screws and remove the door. Insert 2 x CR2032 batteries as shown and screw the door back on.

WARNING NOTICE:

PLEASE READ THE FOLLOWING WARNINGS AND ALL ASSEMBLY AND USE INSTRUCTIONS CAREFULLY BEFORE USING THE TagAlert™ SYSTEM. KEEP THESE INSTRUCTIONS FOR FUTURE REFERENCE.

- The TagAlert™ system is not intended to replace responsible and proper supervision.
- It is essential to check reception (LED blinking) regularly.

NOTE: The units will operate differently when your environment changes.

CAUTION: DO NOT use TagAlert™ system without first testing in your environment. See "Testing System" (above).

FCC NOTICE:

This equipment has been tested and found to comply with the limits for a Class B digital device, pursuant to Part 15 of the FCC Rules. These limits are designed to provide reasonable protection against harmful interference in a residential installation. This equipment generates, uses and can radiate radio frequency energy and, if not installed and used in accordance with the instructions, may cause harmful interference to radio communications. If this equipment does cause harmful interference to radio or television reception, which can be determined by turning the equipment off and on, the user is encouraged to try to correct the interference by one or more of the following measures:

- Reorient or relocate the receiving antenna.
- Increase the separation between the equipment and the receiver.
- Consult the dealer or an experienced radio/TV technician for help.
- The carrier frequency is 902KHz – 928KHz.
- The RF output power (or field strength and measurement distance) is about 5 milliwatts.

ONE-YEAR LIMITED WARRANTY:

RemotePlay, Inc. warrants to the original purchaser that this product (TagAlert™), is free from material and workmanship defects when used under normal conditions for a period of one (1) year from the date of purchase. Should the product contain defects in material or workmanship RemotePlay, Inc., will repair or replace the product, at our option, free of charge. Purchaser will be responsible for all costs associated with packaging and shipping the product to RemotePlay, Inc. Consumer Relations Department at the address noted and all other freight or insurance costs associated with the return. RemotePlay, Inc. will bear the cost of shipping the repaired or replaced product to the purchaser. Product should be returned in its original package accompanied by a proof of purchase, either a sales receipt or other proof that the product is within the warranty period. This warranty is void if the owner repairs or modifies the product or the product has been damaged as a result of misuse.

This warranty excludes any liability other than that expressly stated previously, including but not limited to, any incidental or consequential damages.

SOME STATES DO NOT ALLOW THE EXCLUSION OR LIMITATION OF INCIDENTAL OR CONSEQUENTIAL DAMAGES, SO THE ABOVE LIMITATION OR EXCLUSION MAY NOT APPLY TO YOU. THIS WARRANTY GIVES YOU SPECIFIC LEGAL RIGHTS, AND YOU MAY ALSO HAVE OTHER RIGHTS THAT MAY VARY FROM STATE TO STATE.



www.remoteplay.com
www.tagalert.com

WARNING

Changes or modifications not expressly approved by the manufacturer could void the user's authority to operate the equipment.