

Drop Box Monitor

Part #IT-317 (2.0 system)

The CenTrak Drop Box Monitor is designed to support the management of patient tags that are ready to be cleared from the CenTrak System. It can be utilized at nurse's stations or in discharge areas to indicate that a patient has left the facility and that a tag can be re-assigned. This automated disassociation feature is an important component of the system.

When a patient leaves the facility, the tag is removed and dropped into the box. The tag drop is automatically detected by the system and can be translated into a discharge event. The number of tags in the box can be queried at any time. Alerts can be generated when the number of tags approaches a predetermined maximum and sent to the individuals responsible for putting tags back into service.

Included in box:

- Mini monitor assembly
- 4 screws

How it works

- The monitor should be treated just like other monitors except it does not require profile setting. The IT-317 can accept all profiles that do not require noise setting (0-9).
- The monitor will start emitting signal when drop box bin is inserted.

The monitor comes in an assembly with dry contacts to connect to the drop box switch.

Technical Specifications

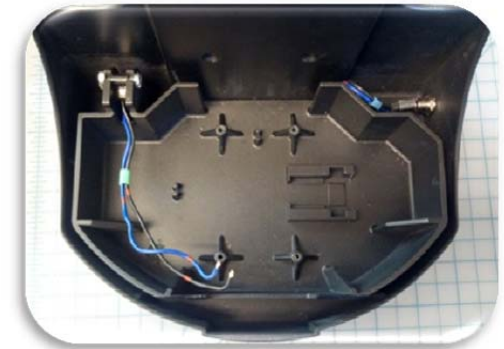
- Operating Temperature -10 C to +50C
- FCC ID: ST2-IT317, IC: 6012A-IT317,
- FCC Operating Frequency Range 902-928 MHz
- Battery life expectancy is 2.5 years*

*Battery expectancy is only an estimate and can vary based on operating conditions, type of batteries used and method of operation (estimate assumes operating temperature of 25C and CenTrak supplied batteries).



Physical Installation

Step 1 – Cut and remove fuse. The wires from the switch must be cut to length sufficient to reach the dry contact junction (about 6 inches).



Step 2 – Attach monitor assembly with 4 provided screws. Attach switch wires to dry contact junction.



FCC and IC Statements:

THIS DEVICE COMPLIES WITH PART 15 OF THE FCC RULES AND INDUSTRY CANADA LICENSE-EXEMPT RSS STANDARD(S). OPERATION IS SUBJECT TO THE

FOLLOWING TWO CONDITIONS: (1) THIS DEVICE MAY NOT CAUSE HARMFUL INTERFERENCE, AND (2) THIS DEVICE MUST ACCEPT ANY INTERFERENCE

RECEIVED, INCLUDING INTERFERENCE THAT MAY CAUSE UNDESIRE OPERATION. Modifying or tampering with the transceiver's or receiver's internal

components can cause a malfunction, invalidate the warranty, and will void FCC authorization to use these products. This product or its systems are covered

by one or more of the following U.S. patents: 5,917,425, 7,061,428, 7,378,964, 7,619,532.

L' utilisation de ce dispositif est autorisée seulement aux conditions suivantes : (1) il ne doit pas produire de brouillage et (2) l' utilisateur du dispositif doit

être prêt à accepter tout brouillage radioélectrique reçu, même si ce brouillage est susceptible de compromettre le fonctionnement du dispositif.