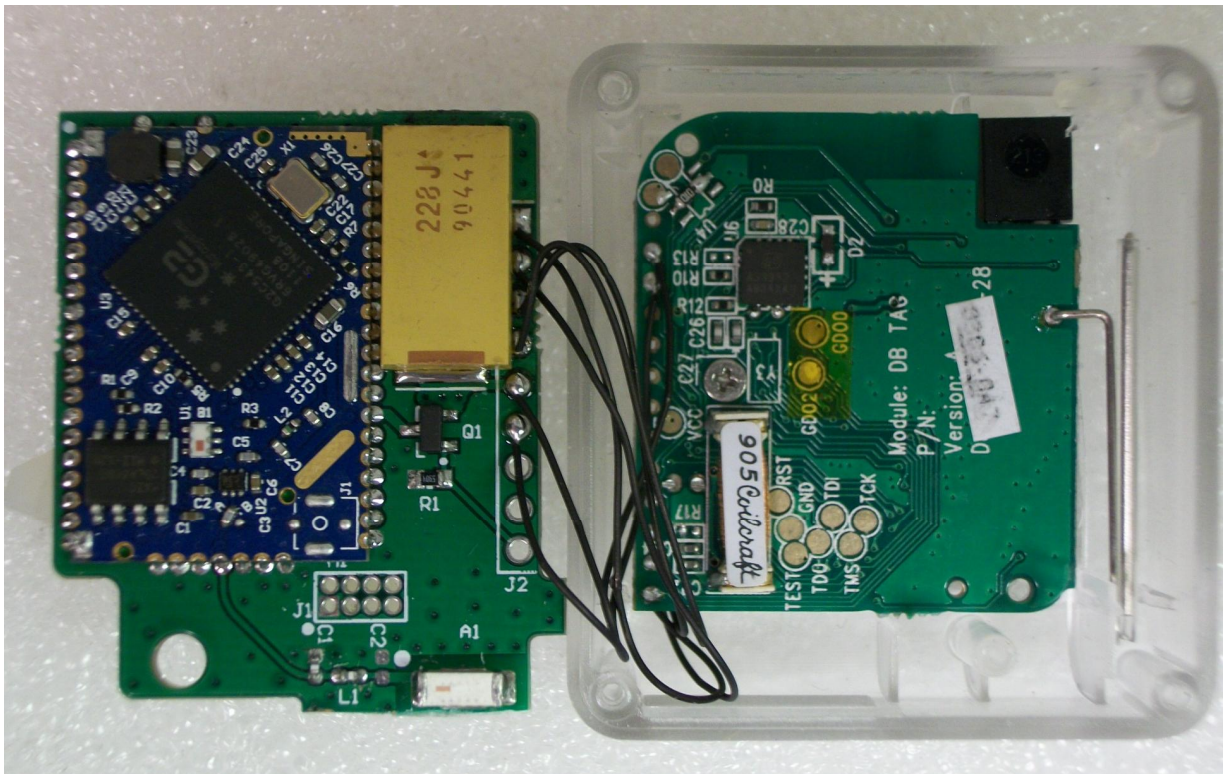




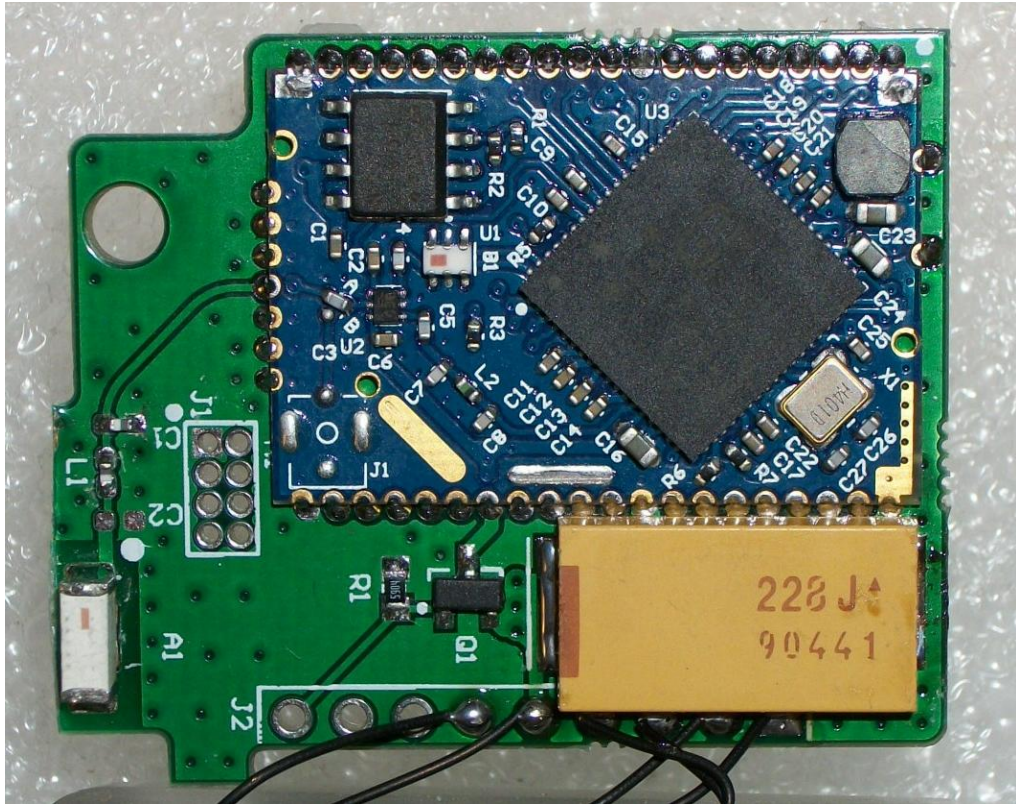
7.3 Rear Cover Removed_ Inside View



7.4 Battery Removed _ Inside View



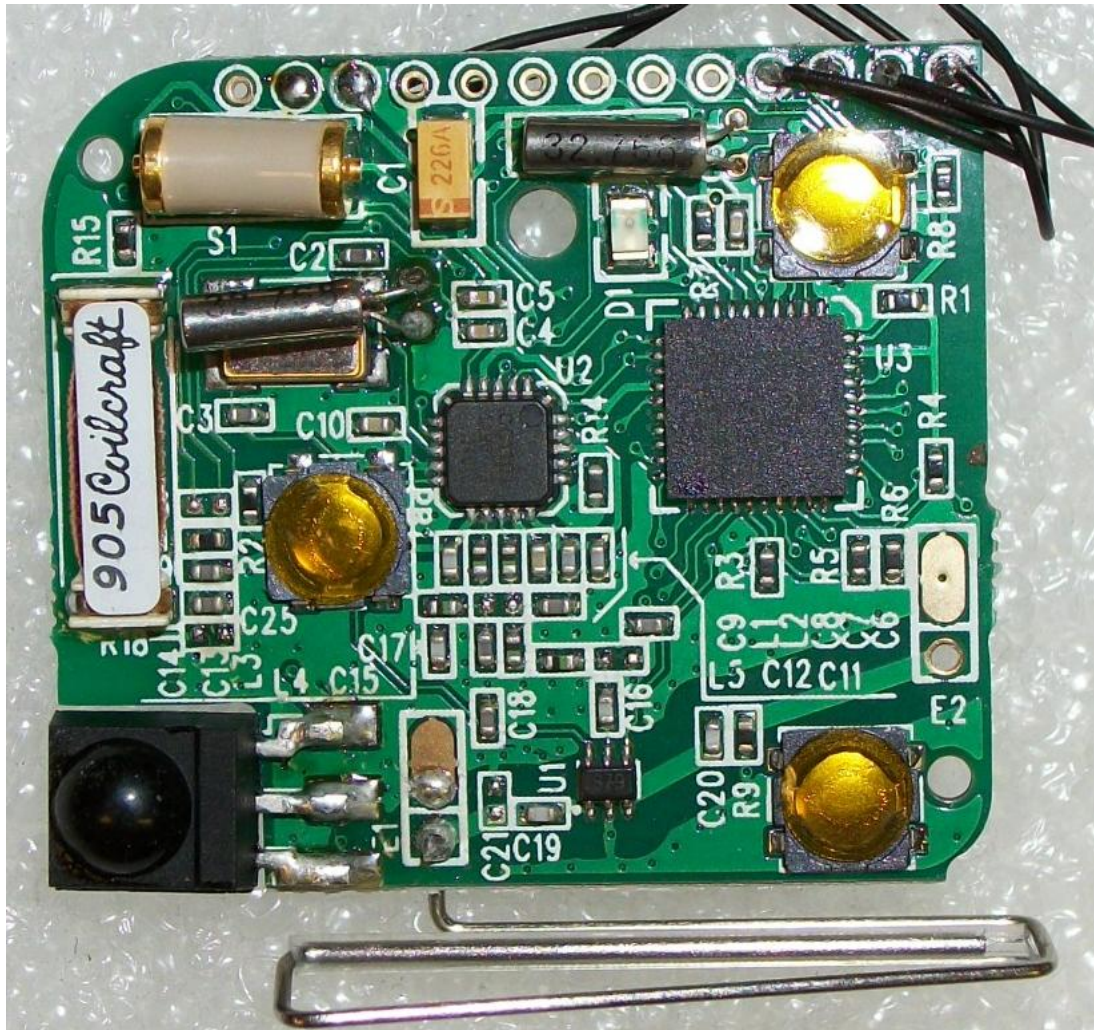
7.5 900MHz PCB & 2.4GHz PCB Connection



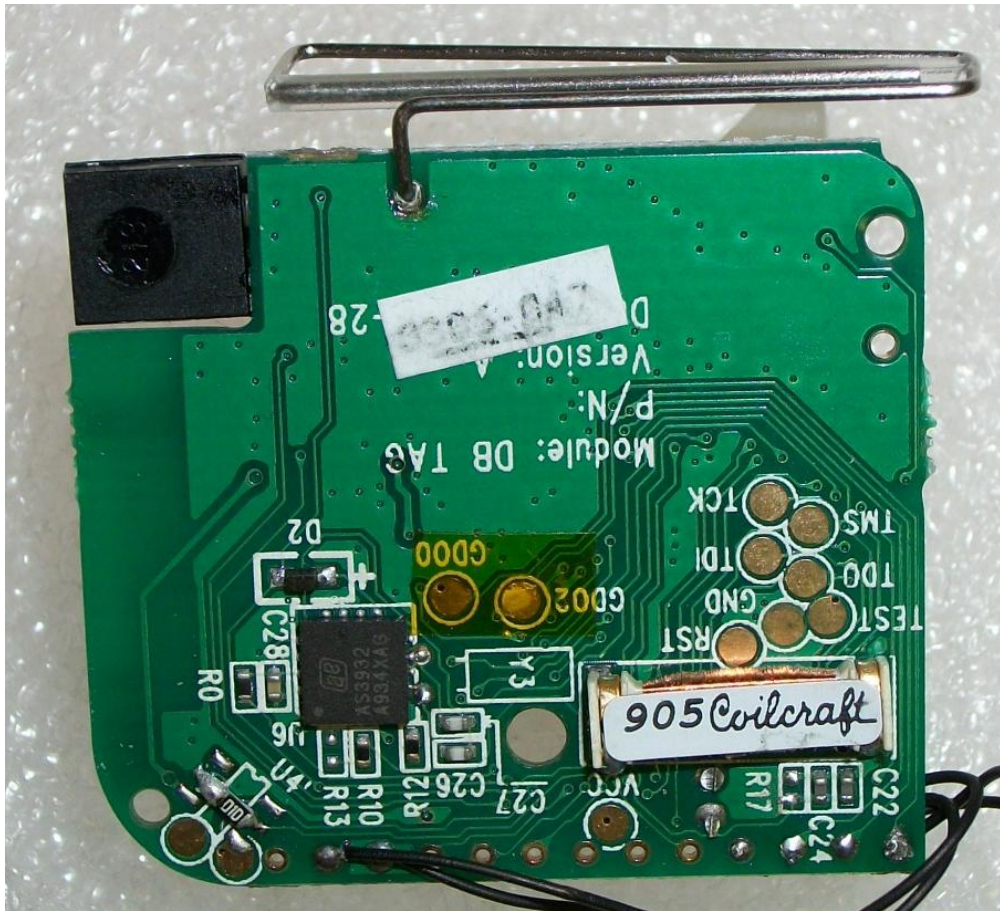
7.6 PCB_2.4GHz_PCB Component Side View



7.7 PCB_2.4GHz_ PCB Foil Side View



7.8 PCB_900MHz_Component Side View



7.9 PCB_900 MHz_ PCB Rear View