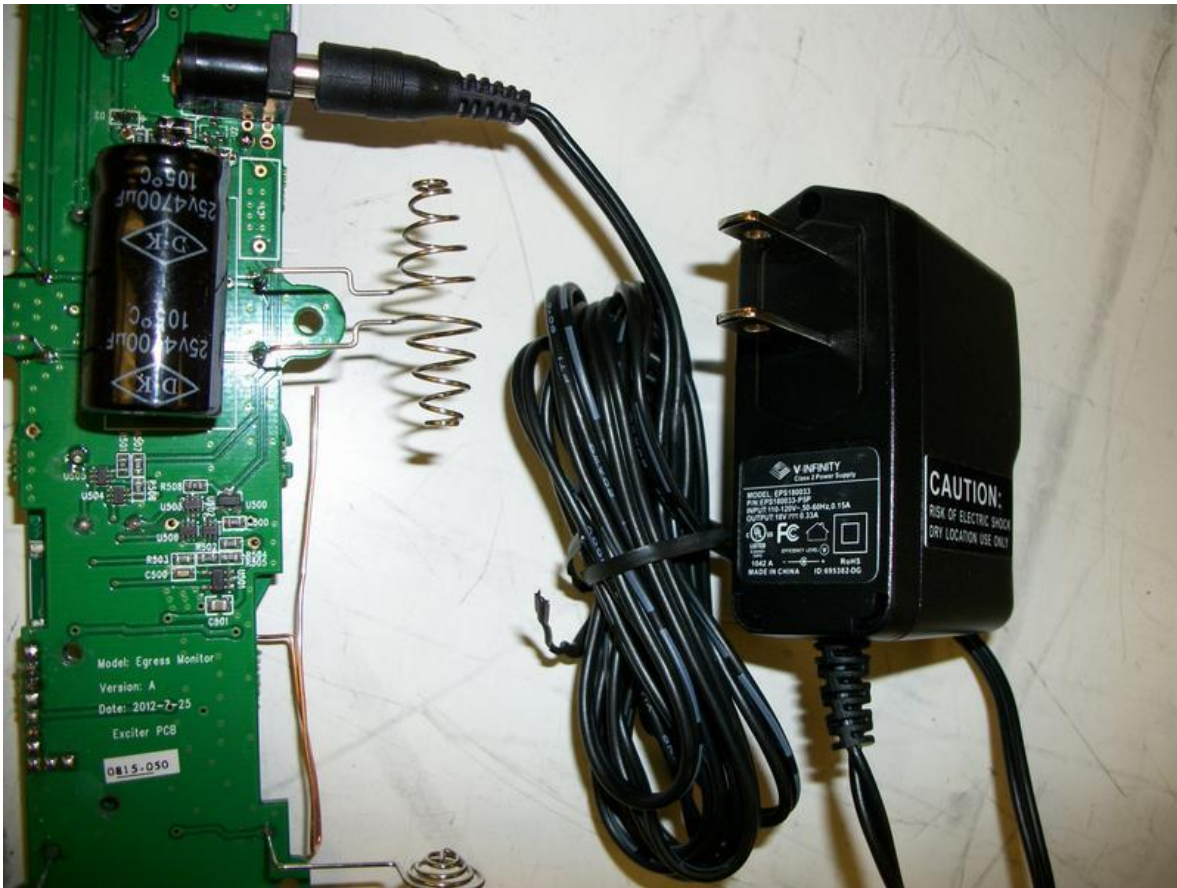


Rear Cover Open\_ Inside View 1

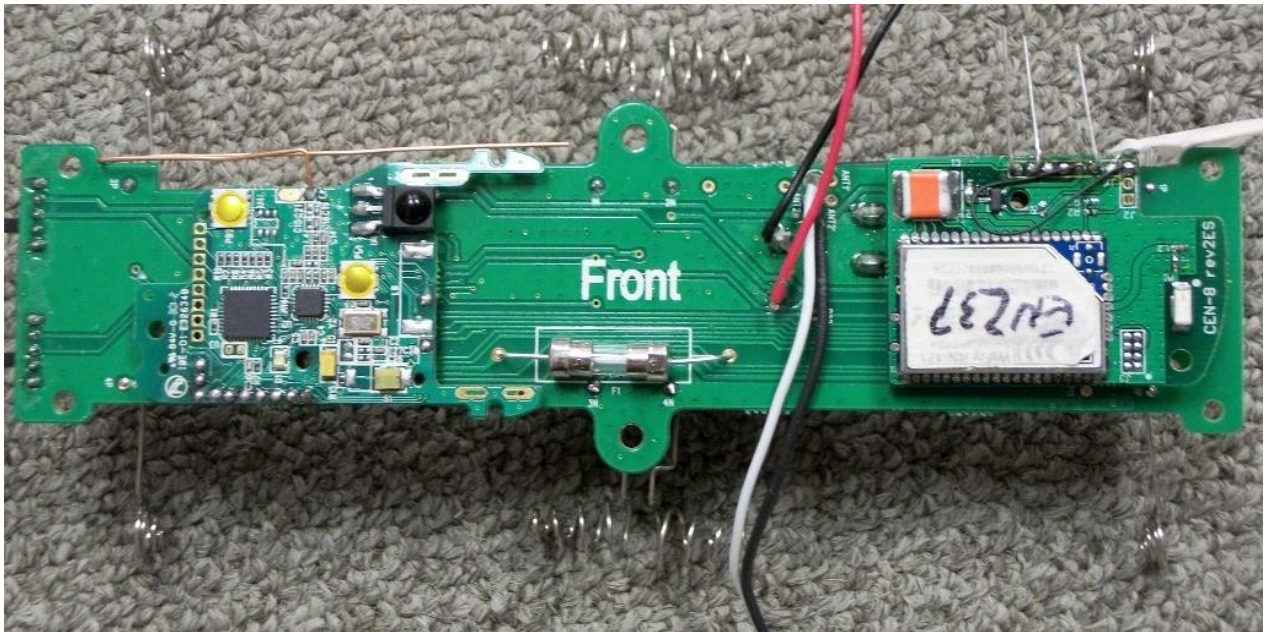


Rear Cover Open\_ Inside View 2 (LF Antenna)

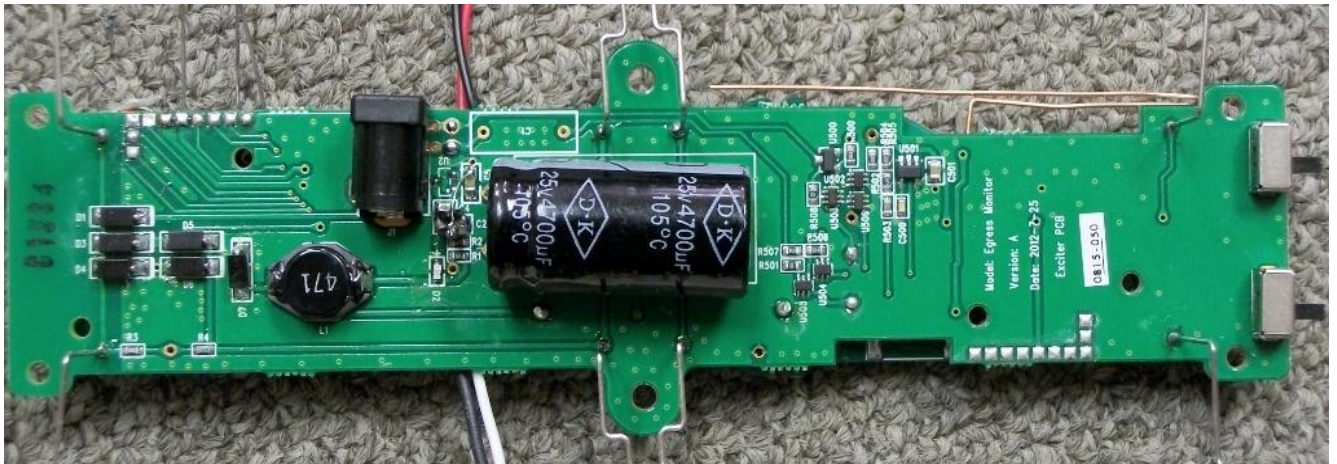


AC/DC Adapter



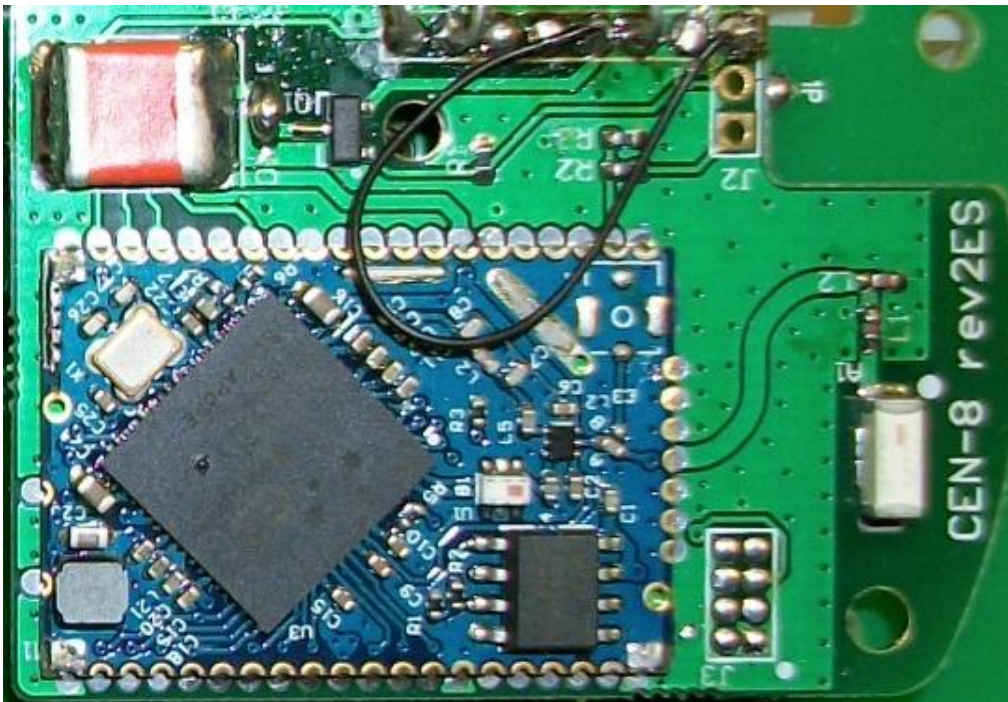


Main PCB Front Side

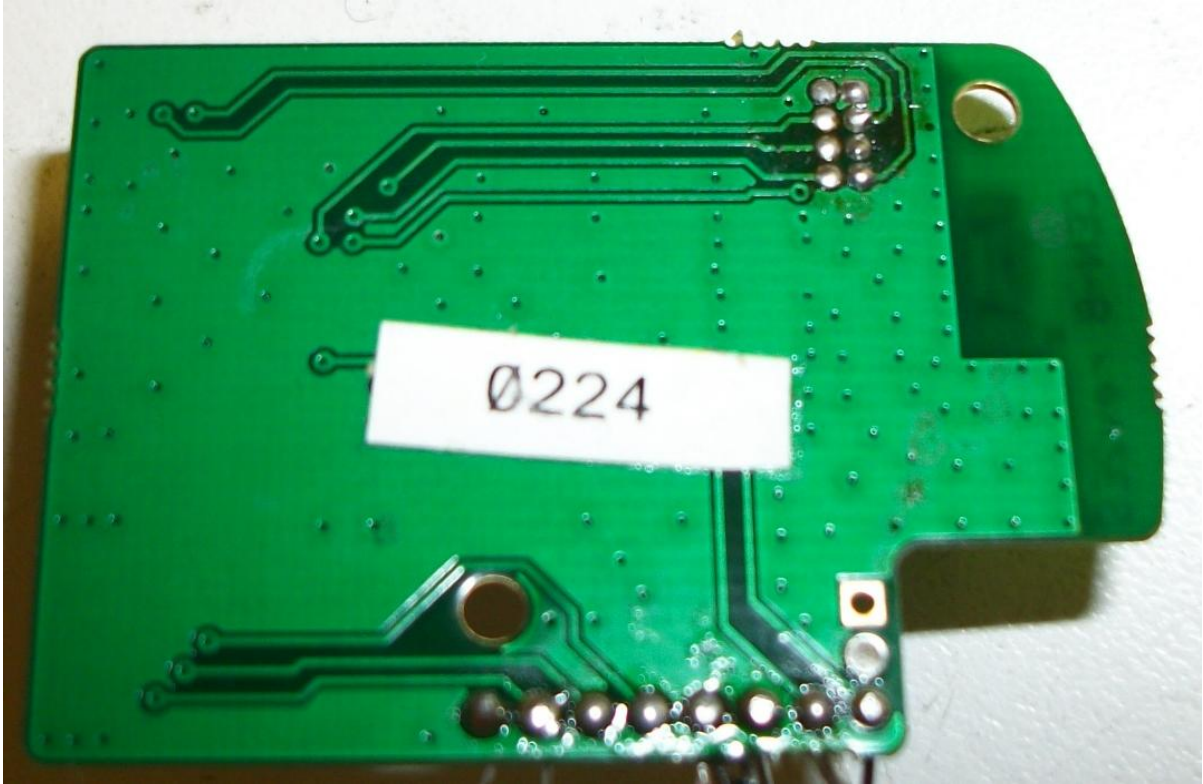


Main PCB Back Side



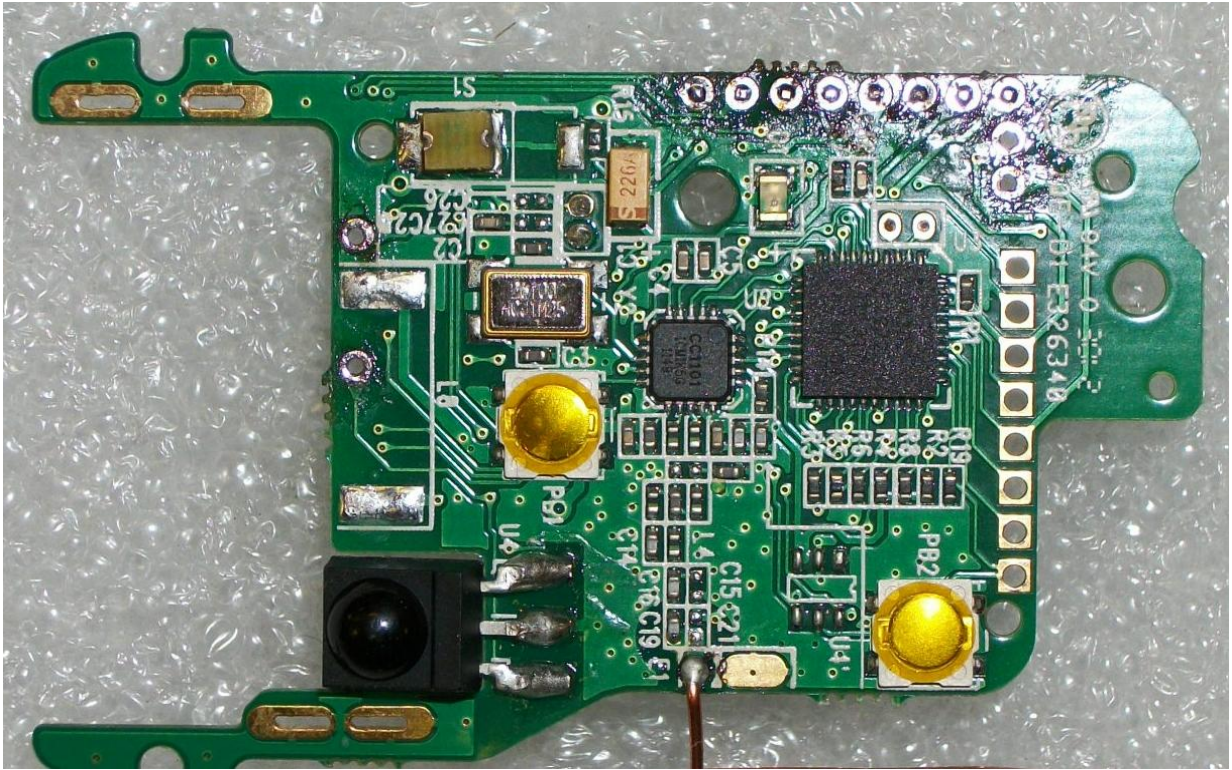


2.4GHz Radio PCB Front Side  
(with and without shielding cover)



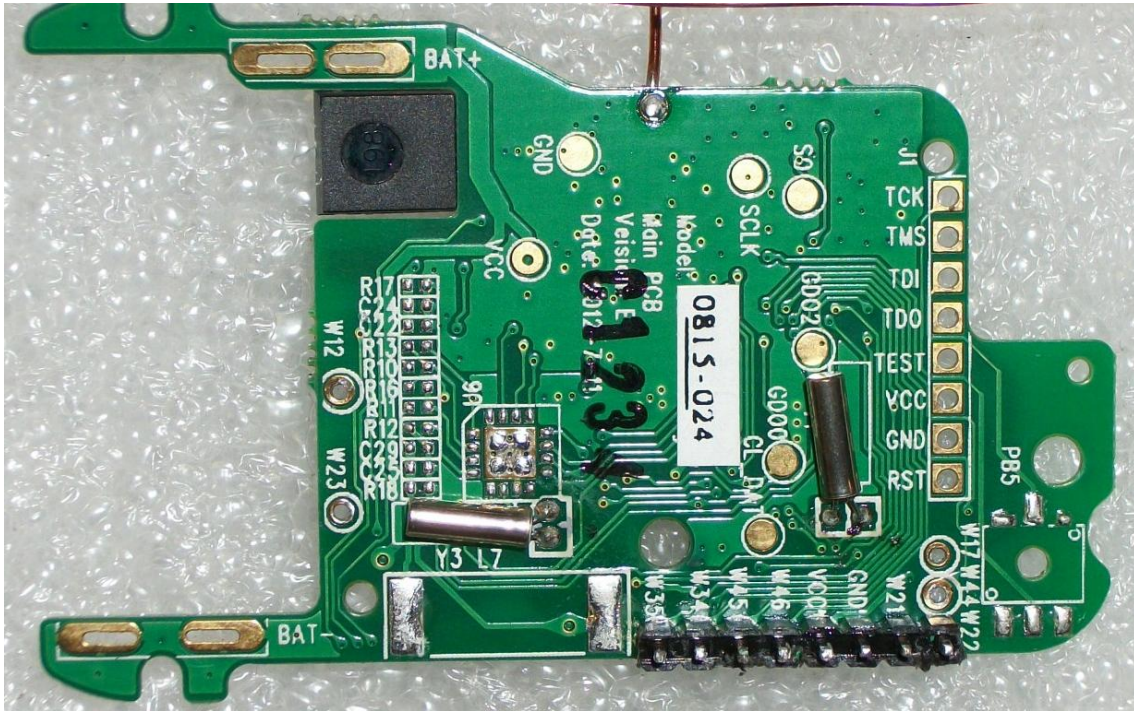
2.4GHz Radio PCB Back Side





900MHz Radio PCB Front Side





900MHz Radio PCB Back Side