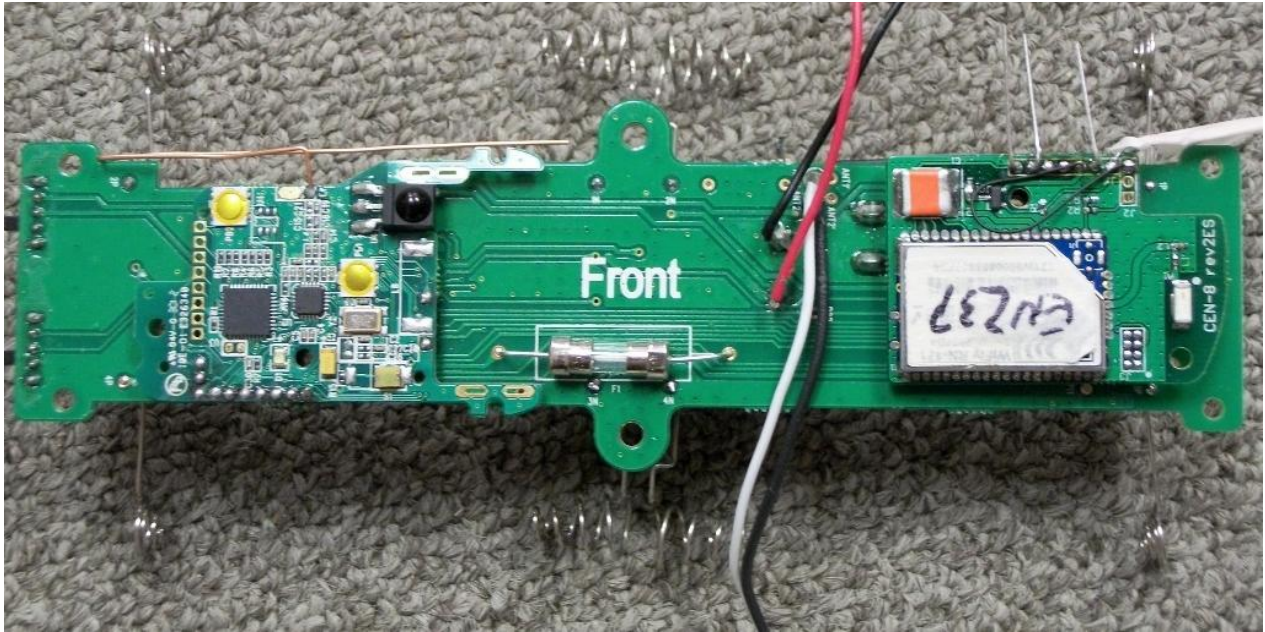


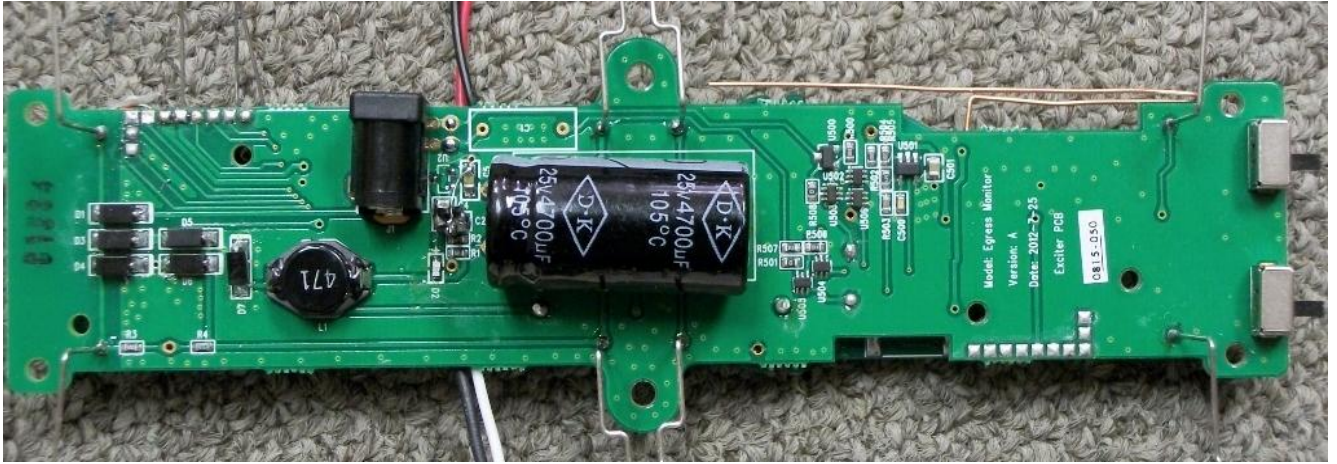
Rear Cover Open_ Inside View 1



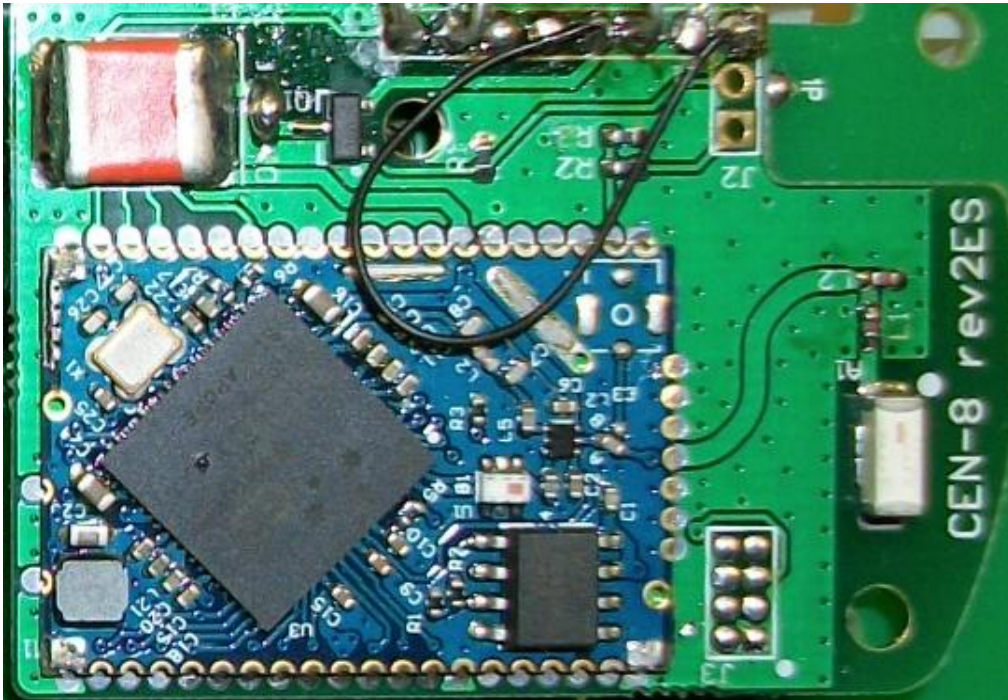
Rear Cover Open_ Inside View 2 (LF Antenna)



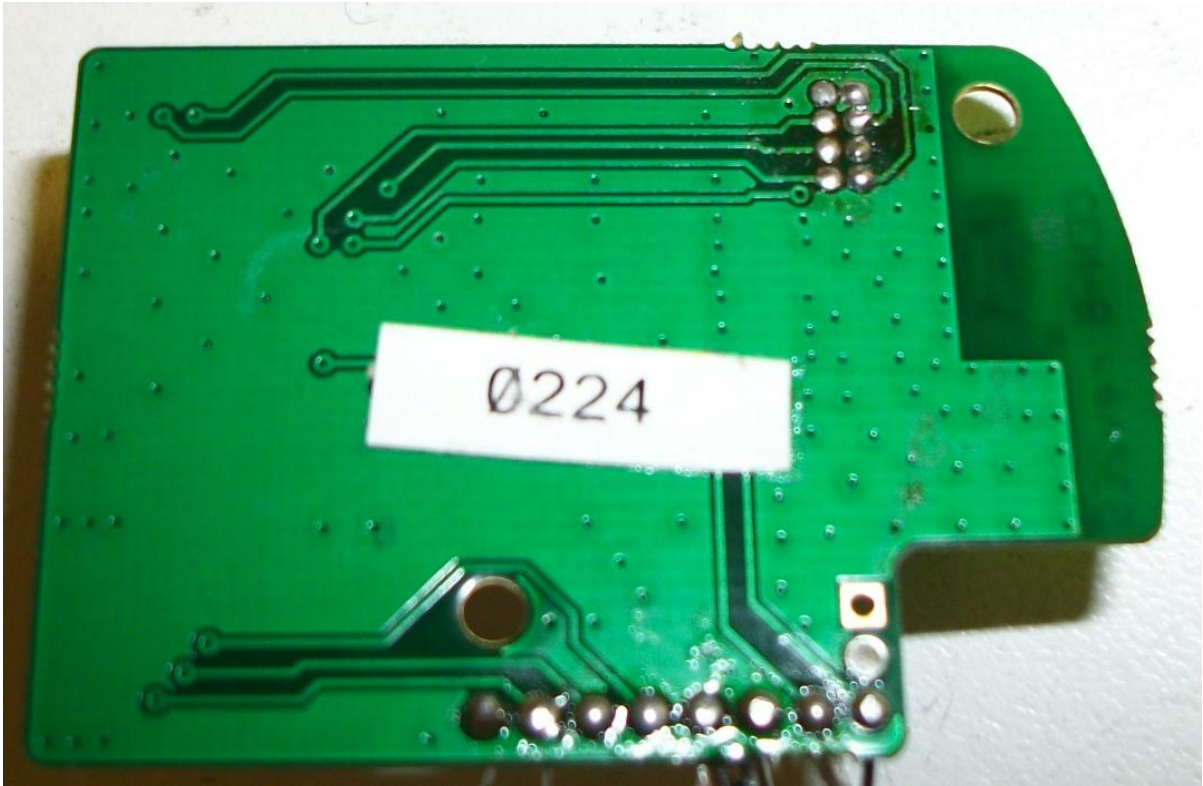
Main PCB Front Side



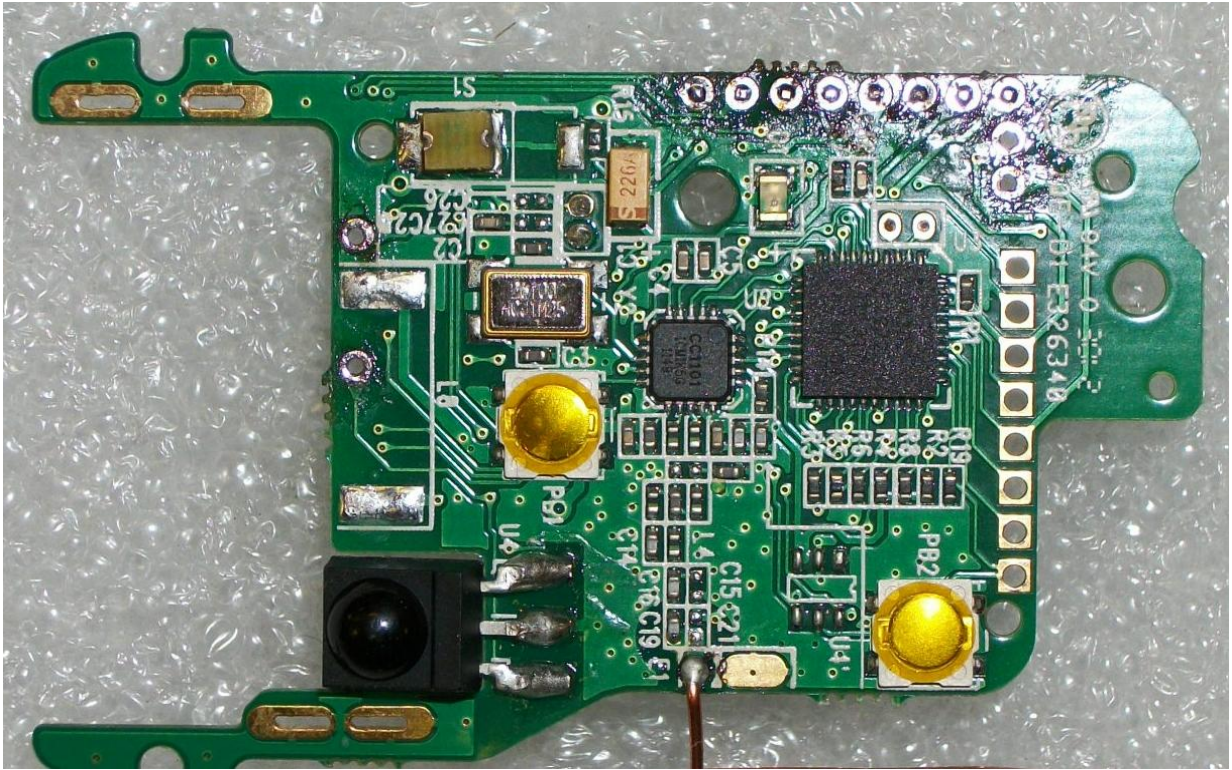
Main PCB Back Side



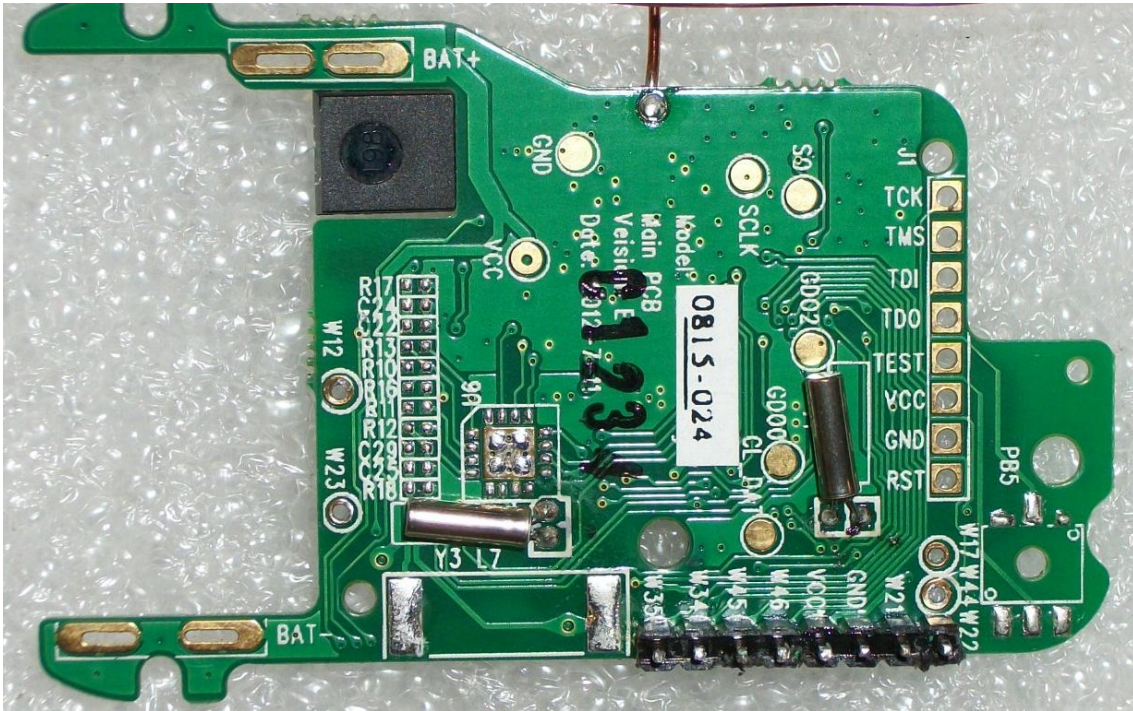
2.4GHz Radio PCB Front Side
(with and without shielding cover)



2.4GHz Radio PCB Back Side



900MHz Radio PCB Front Side



900MHz Radio PCB Back Side